

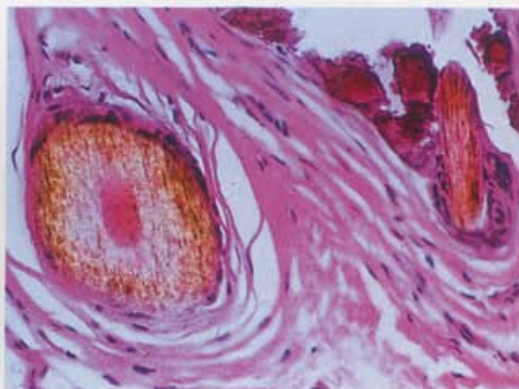
ARCHIVES

OF

FAMILY MEDICINE

PROPERTY OF
BRANDYWINE HOSPITAL
HEALTH SCIENCES LIBRARY

FEBRUARY 1996



See Special Selection, page 65.

THE EMOTIONAL IMPACT OF MISTAKES
ON FAMILY PHYSICIANS

A PRIMARY CARE APPROACH TO THE
ADULT PATIENT WITH NODULAR
THYROID DISEASE

CURRENT MANAGEMENT OF ACUTE
BRONCHITIS IN AMBULATORY CARE

HUMAN IMMUNODEFICIENCY
VIRUS-INFECTED HEALTH
CARE WORKERS

ELDER ABUSE

AN OFFICE SYSTEM FOR ORGANIZING
PREVENTIVE SERVICES

#BXNBBPM***** 3-DIGIT 193 #

#010002700101#99D 9612 013514

BRANDYWINE HOSP & TRAUMA 1156

0841

CENTER/HLTH SCIENCE CTR 001

ROUTE 30 BYPASS

COATESVILLE PA 19320



American Medical Association

Physicians dedicated to the health of America



- tance: report of the National Nosocomial Resistance Surveillance Group. *Diagn Microbiol Infect Dis*. 1992;15(suppl 2):375-425.
10. North D. Controlling the costs of antibiotic resistance. *Clin Ther*. 1993;15(suppl A):3-11.
 11. Bartlett JG, Froggatt JW III. Antibiotic resistance. *Arch Otolaryngol Head Neck Surg*. 1995;121:392-396.
 12. Molstad S, Ekedahl A, Hovelius B, Thimansson H. Antibiotics prescription in primary care: a 5-year follow-up of an educational program. *Fam Pract*. 1994; 11:282-286.
 13. Applebaum PC. Antimicrobial resistance in *Streptococcus pneumoniae*: an overview. *Clin Infect Dis*. 1992;15:95-99.
 14. Mufson MA. Viral acute pharyngitis, laryngitis, bronchitis. In: Wingaarden JB, Smith LH Jr, Bennett JC, eds. *Cecil's Textbook of Medicine*. Philadelphia, Pa: WB Saunders Co; 1992:1810-1811.
 15. Hueston WJ. A comparison of albuterol and erythromycin for the treatment of acute bronchitis. *J Fam Pract*. 1991;33:476-480.
 16. Melbye H, Aasebo U, Straume B. Symptomatic effect of inhaled fenoterol in acute bronchitis: a placebo-controlled double-blind study. *Fam Pract*. 1991;8: 216-222.
 17. Hueston WJ. Albuterol metered-dose inhaler in the treatment of acute bronchitis. *J Fam Pract*. 1994;39:437-440.
 18. Williamson HA Jr. Pulmonary function tests in acute bronchitis: evidence for reversible airway obstruction. *J Fam Pract*. 1987;25:251-256.
 19. *St. Anthony's Color-Coded ICD-9-CM Book for Physician Payment*. 1994 edition. Alexandria, Va: St Anthony Publishing Inc; 1993;1, 2.
 20. Saint S, Bent S, Vittinghoff E, Grady D. Antibiotics in chronic obstructive pulmonary disease exacerbations: a meta-analysis. *JAMA*. 1995;273:957-960.
 21. Dee C, Blazek R. Information needs of the rural physician: a descriptive study. *Bull Med Libr Assoc*. 1993;81:259-264.
 22. Sanders J, Brucker P, Miller MD. Using telemedicine for continuing education for rural physicians. *Acad Med*. 1995;70:457.
 23. Halfon N, Newacheck PW. Childhood asthma and poverty: differential impacts and utilization of health services. *Pediatrics*. 1993;91:56-61.
 24. Hueston WJ, Schiaffino MA. Antibiotic choice and patient outcomes in community-acquired pneumonia. *J Am Board Fam Pract*. 1994;7:95-99.
 25. Barry AL, Jones RN. In vitro activity of ciprofloxacin against gram positive cocci. *Am J Med*. 1987;82(suppl 4A):27-32.
 26. Korner RI, Reeves DS, MacGowan AP. Dangers of oral fluoroquinolone treatment in community acquired upper respiratory tract infections. *BMJ*. 1994; 308:191-192.
 27. Little PS, Williamson I. Are antibiotics appropriate for sore throats? costs outweigh the benefits. *BMJ*. 1994;309:1010-1011.
 28. Baquero F, Loza E. Antibiotic resistance of microorganisms involved in ear, nose and throat infections. *Pediatr Infect Dis J*. 1994;13:S9-S14.
 29. Eliasson I, Holst E, Kamme C, Molstad S. Emergence and persistence of beta-lactamase-producing bacteria in the upper respiratory tract in children treated with beta-lactam antibiotics. *Am J Med*. 1990;88:S51-S55.
 30. Vinson DC, Lutz LJ. The effect of parental expectations on the treatment of children with a cough: a report from ASPN. *J Fam Pract*. 1993;37:23-27.
 31. Pozzi E. Clinical efficacy of dirithromycin versus miomycin in the treatment of acute bronchitis or acute exacerbations of chronic bronchitis. *J Antimicrob Chemother*. 1993;31(suppl C):153-158.
 32. Psalty BM, Koeppell TD, Yanez D, et al. Temporal patterns of antihypertensive medication use among older adults, 1989 through 1992: an effect of the major clinical trials on clinical practice? *JAMA*. 1995;273:1436-1438.
 33. Molstad S, Arvidsson E, Eliasson I, et al. Production of beta-lactamase in respiratory tract bacteria in children: relationship to antibiotic use. *Scand J Prim Health Care*. 1992;10:16-20.

The number one source for news about the medical profession



Medicare reform and market upheaval promise dramatic changes in 1996. Will you know what to expect? You will — if you read American Medical News.

Turn to American Medical News for the latest on all aspects of health care...including market developments, the impact of managed care, antitrust issues, the tort reform debate, and much more. You can trust its expert viewpoint on the legal, political, economic and social issues in medicine today. And with American Medical News, you'll always find out how the news affects you — and your patients.

The more medicine changes, the more you need American Medical News

Join the more than 325,000 readers involved in health care who depend on American Medical News weekly. They already know why it's the most widely read publication of its kind. A one year personal subscription (48 issues) is **only \$105** (institution rate: \$150).

Call 800-AMA-2350 (FAX 312-464-5831) to subscribe today!

American Medical Association • PO Box 10946 • Chicago, IL 60610
e-mail: ama-subs@web.ama-assn.org

P6FA3

than a separate respiratory disease.¹⁵ Further research to define the role of acute bronchitis in causing chronic respiratory disease would be welcome. The appropriate answers to some of these questions will likely precipitate a more rapid change in physician prescribing behavior.

Harold A. Williamson, Jr, MD, MSPH
University of Missouri School of Medicine
Columbia

REFERENCES

1. Mainous AG III, Zoorob RJ, Hueston WJ. Current management of acute bronchitis in ambulatory care: the use of antibiotics and bronchodilators. *Arch Fam Med.* 1996;5:79-83.
2. Orr PH, Scherer K, Macdonald A, Moffatt MEK. Randomized placebo-controlled trials of antibiotics for acute bronchitis: a critical review of the literature. *J Fam Pract.* 1993;36:507-512.
3. Williams WC, Williamson HA Jr, LeFevre ML. The prevalence of *Mycoplasma pneumoniae* in ambulatory patients with non-streptococcal sore throat. *Fam Med.* 1991;23:117-121.
4. King DE, Muncie HL. High prevalence of *Mycoplasma pneumoniae* in patients with respiratory tract symptoms: a rapid detection method. *J Fam Pract.* 1991;32:529-531.
5. Falck G, Heyman L, Gnarpe J, Gnarpe H. *Chlamydia pneumoniae* (TWAR): a common agent in acute bronchitis. *Scand J Infect Dis.* 1994;26:179-187.
6. Williamson HA. Pulmonary function tests in acute bronchitis: evidence for reversible airway obstruction. *J Fam Pract.* 1987;25:251-256.
7. Melbye H, Kongerud J, Vorland L. Reversible air flow limitation in adults with respiratory infection. *Eur Respir J.* 1994;7:1239-1245.
8. Boldy DAR, Skidmore SJ, Ayres JG. Acute bronchitis in the community: clinical features, infective factors, changes in pulmonary function and bronchial reactivity to histamine. *Respir Med.* 1990;84:377-385.
9. Hueston WJ. A comparison of albuterol and erythromycin for the treatment of acute bronchitis. *J Fam Pract.* 1991;33:476-480.
10. Hueston WJ. Albuterol delivered by metered-dose inhaler to treat acute bronchitis. *J Fam Pract.* 1994;39:437-440.
11. Melbye H, Aasebo U, Straume B. Symptomatic effect of inhaled fenoterol in acute bronchitis: a placebo-controlled double-blind study. *Fam Pract.* 1991;8:216-222.
12. Greco PJ, Eisenberg JM. Changing physicians' practices. *N Engl J Med.* 1993;329:1271-1274.
13. Molstad S, Ekedahl A, Hovelius B, Thimansson H. Antibiotics prescription in primary care: a 5-year follow-up of an educational programme. *Fam Pract.* 1994;11:282-286.
14. Friis H, Bro F, Eriksen NR, Mabeck CE, Vejlsgaard R. The effect of reimbursement on the use of antibiotics. *Scand J Prim Health Care.* 1993;11:247-251.
15. Hahn DL, Golubjatnikov R. Asthma and chlamydial infection: a case series. *J Fam Pract.* 1994;38:589-595.

Shouldn't you be reading your own copy of the world's most widely read, peer-reviewed medical journal?

Subscribe to JAMA today!

BY PHONE:

800-AMA-2350

BY FAX:

312-464-5831

BY E-MAIL:

ama-subs@web.ama-assn.org

BY MAIL:

Yes! Enter my one-year subscription to JAMA (48 issues) at the personal* rate of \$125.

Name _____
Please Print

MD/DO Other
Please Specify

Address _____

City/State _____

Zip _____

Check enclosed payable to AMA.

Please charge my: VISA Optima
 American Express MasterCard

Card No. _____

Exp. Date _____

Signature _____

Daytime Phone _____

Mail to: Subscriber Services
American Medical Association
P.O. Box 10946
Chicago, IL 60610

*Personal rate applies only for payment made with a personal check or credit card; regular subscription rate is \$160. Add \$35 for personal subscriptions delivered outside the US (regular subscriptions outside the US add \$75). Washington, DC residents add 5.75% sales tax. Canada orders add 7% GST. Rates subject to change.

P6FA4

18. Harris R, Leininger L. Preventive care in rural primary care practice. *Cancer*. 1993;72:1113-1118.
19. Morrissey J, Harris RP, Kincade-Norburn J, et al. Medicare reimbursement for preventive care: changes in performance of services, quality of life, and health care costs. *Med Care*. 1995;33:315-331.
20. Wender R. Cancer screening in primary care: overcoming the obstacles to prevention. *Female Patient*. 1993;18:33-39.
21. Wender R. Cancer screening and prevention in primary care: obstacles for physicians. *Cancer*. 1993;72(suppl):1093-1099.
22. Hayward RA, Steinberg EP, Ford DE, Roizen MF, Roach KW. Preventive care guidelines 1991. *Ann Intern Med*. 1991;114:758-783.
23. American Academy of Family Physicians. *Positions on the Clinical Aspects of Medical Practice*. Kansas City, Mo: American Academy of Family Physicians; 1994.
24. American Cancer Society. Update, January, 1992: the American Cancer Society guidelines for the cancer-related checkup. *CA Cancer J Clin*. 1992;42:44-45.
25. Kaluzny Ad, Harris RP, Strecher VJ, Stearns S, Qaqish B, Leininger L. Prevention and early detection activities for primary care: new directions for implementation. *Cancer Detect Prev*. 1991;15:459-464.
26. Carney PA, Dietrich AJ, Keller A, Landgraf J, O'Connor GT. Tools, teamwork, and tenacity: an office system for cancer prevention. *J Fam Pract*. 1992;35:388-394.
27. Grabenstein JD, Smith LJ, Watson RR, Summers RJ. Immunization outreach using individual need assessments of adults at an army hospital. *Public Health Rep*. 1990;105:311-316.
28. Cheney C, Ramsdell JW. Effect of medical records' checklists on implementation of periodic health measures. *Am J Med*. 1987;83:129-136.
29. Prislun MD, Vandenbark MS, Clarkson QD. The impact of a health screening flow sheet on the performance and documentation of health screening procedures. *Fam Med*. 1986;18:290-292.
30. Cohen SJ, Christen AG, Katz BP, et al. Counseling medical and dental patients about cigarette smoking: the impact of nicotine gum and chart reminders. *Am J Public Health*. 1987;77:313-316.
31. Dickey LL. Promoting preventive care with patient-held minirecords: a review. *Patient Educ Counsel*. 1993;20:37-47.
32. Dietrich AJ, Duhamel M. Improving geriatric preventive care through a patient-held checklist. *Fam Med*. 1989;21:195-198.
33. Gemson DH, Ashford AR, Dickey L, et al. Put prevention into practice: impact of a multifaceted physician education program on preventive services in an inner-city hospital. *Arch Intern Med*. In press.
34. Dickey LL, Kamerow DK. The 'Put Prevention Into Practice' campaign: office tools and beyond. *J Fam Pract*. 1994;39:321-323.
35. *Clinician's Handbook of Preventive Services*. Washington, DC: US Dept of Health and Human Services, Public Health Service, Office of Disease Prevention and Health Promotion; 1994.
36. Fiore MC. The new vital sign: assessing and documenting smoking status. *JAMA*. 1991;266:3193-3194.
37. Hollis JF, Lichtenstein E, Vogt TM, Stevens VJ, Biglan A. Nurse-assisted counseling for smokers in primary care. *Ann Intern Med*. 1993;118:521-525.
38. Glynn TJ, Manley MW. *How to Help Your Patients Stop Smoking: A National Cancer Institute Manual for Physicians*. Bethesda, Md: US Dept of Health and Human Services, Public Health Service, National Institutes of Health, National Cancer Institute; 1993. US Dept of Health and Human Services publication NIH 93-3064.
39. Fordham D, McPhee SJ, Bird JA, Rodnick JE, Detmer WM. The cancer prevention reminder system. *Clin Comput*. 1990;7:289-295.
40. Frame PS, Zimmer JG, Werth PL, Martens WB. Description of a computerized health maintenance tracking system for primary care practice. *Am J Prev Med*. 1991;7:311-318.
41. Ornstein SM, Garr DR, Jenkins RG. A computerized microcomputer-based medical records system with sophisticated preventive services features for the family physician. *J Am Board Fam Pract*. 1993;6:55-60.
42. Nichol KL. Long-term success with the national health objective for influenza vaccination: an institution-wide model. *J Gen Intern Med*. 1992;7:595-600.
43. Leininger LS, Harris R, Jackson RS, Strecher VJ, Kaluzny AD. CQI in primary care. In: McLaughlin CP, Kaluzny AD, eds. *Continuous Quality Improvement in Health Care: Theory, Implementation, and Applications*. Gaithersburg, Md: Aspen Publishers Inc; 1994:chap 14.

Clinical Pearl

Pituitary incidentalomas are unsuspected and endocrinologically silent (average follow-up, 6 years). Of those less than 10 mm, there was no change over several years. Of those larger than 10 mm, two of 16 experienced complications and one required surgery; four of 16 enlarged. Thus, small ones remain benign at least for several years. (*Arch Intern Med*. 1995;155:181-183.)

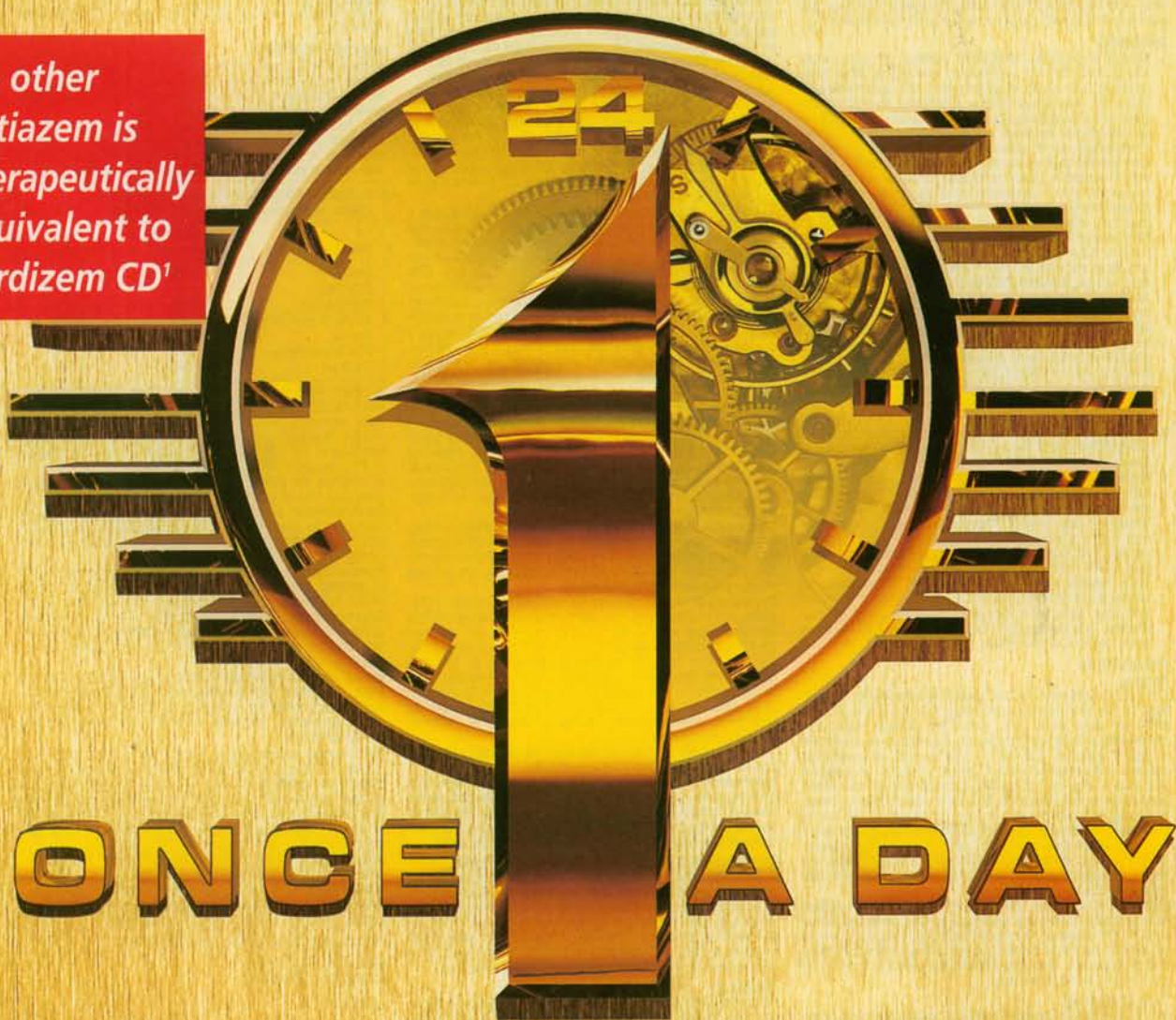
IN HYPERTENSION OR ANGINA

CARDIZEM[®] CD

(diltiazem HCl) 120-, 180-, 240-, 300-mg Capsules

**FOR EFFECTIVE
24-HOUR CONTROL**

No other
diltiazem is
therapeutically
equivalent to
Cardizem CD¹



**A unique hemodynamic and safety profile
for hypertension or angina^{2,3}**

- A side-effect discontinuation rate comparable to placebo in both hypertension and angina trials³
- Most commonly reported side effects are headache (5.4%), bradycardia (3.3%), first-degree AV block (3.3%), dizziness (3.0%), edema (2.6%), ECG abnormality (1.6%), and asthenia (1.8%)²

Please see brief summary of prescribing information on adjacent page.