

PERSPECTIVES

The Osteoclast Cytoskeleton: How Does It Work?

Steven L. Teitelbaum and Wei Zou

Washington University School of Medicine, St. Louis, Missouri, USA

Abstract

The capacity of the osteoclast to resorb bone is distinctive, as is the cell's appearance. Both characteristics reflect cytoskeletal organization that yields structures such as the sealing zone and ruffled border. The unique nature of these organelles and their dependence upon contact with bone have been appreciated for some time but insights into the mechanisms by which they are generated come from more recent studies. These insights include the role of integrins, particularly $\alpha v \beta 3$, in cytoskeletal organization and the canonical signaling pathway they activate. Investigators now appreciate that the sealing zone isolates the resorptive microenvironment from the general extracellular space, permitting secretion of matrix-degrading molecules on the bone surface. Thus, the osteoclast is a secretory cell that depends upon polarization of exocytic vesicles to the bone-apposed plasma membrane into which they insert under the aegis of vesicle/membrane fusion proteins. This process focally expands and convolutes the plasmalemma included within the sealing zone, eventuating in formation of the ruffled border. Many of these events are now better understood and are the focus of this *Perspective*. *IBMS BoneKEy*. 2011 February;8(2):74-83.
©2011 International Bone & Mineral Society

Isolating the Resorptive Microenvironment

Osteoclasts are polykaryons and members of the macrophage lineage with the unique capacity to degrade the inorganic and organic matrices of bone. If excessive, the bone resorptive activity of osteoclasts causes osteoporosis. Conversely, the osteoclast initiates remodeling that likely removes structurally compromised bone, thereby maintaining mechanical integrity (1). Skeletal health, therefore, requires optimal osteoclast function.

Resorption is initiated by attachment of osteoclasts to bone. They then develop a compartment between their plasma membrane and the bone surface into which the cells transport matrix-degrading molecules including H^+ and Cl^- , which, in concert, demineralize the target bone, and cathepsin K, which degrades the exposed collagen fibers and associated proteins. To isolate this resorptive microenvironment from the general extracellular space, osteoclasts reorganize their cytoskeleton to generate an encompassing, actin-rich,

gasket-like, sealing zone. A single osteoclast, being a large cell, enjoys multiple contacts with bone and therefore generates numerous sealing zones and resorptive microenvironments.

When most other cells attach to matrix they generate focal adhesions. These stable structures contain integrins and signaling and cytoskeletal molecules that, upon contact with matrix, promote formation of actin stress fibers. Consistent with the lack of actin stress fibers in mammalian osteoclasts, they lack focal adhesions but in their place develop podosomes (2;3). These punctuate structures contain an F-actin core and a peripheral "cloud" of a loose network of radial actin cables (4-7). In contrast to focal adhesions, podosomes are transient but mediate substrate adhesion and thus formation of the resorptive microenvironment.

Most past studies of osteoclast podosomes utilized cells resident on plastic or glass. In these circumstances, the punctuate structures initially appear in clusters but ultimately coalesce, first into an

intracytoplasmic actin ring and then a peripheral actin belt (4). The physiological relevance of this observation was challenged by the absence of apparent podosomes or an actin belt in non-stressed osteoclasts on bone (4). While the relevance of the peripheral belt is not established, it is clear that, like the actin ring, the sealing zone of bone-residing osteoclasts also consists of podosome-containing structural units (8).

Microtubules Are Important

Depending upon their state of acetylation, microtubules in osteoclasts are transient or polymerized and relatively stable (9-11). Unlike actin ring formation by glass-residing cells, sealing zone generation in bone-resorbing osteoclasts is characterized by microtubule acetylation, again illustrating the influence of substrate on the cell's cytoskeleton (10).

The histone deacetylase HDAC6 depolymerizes tubulin, thereby destabilizing microtubules. Cbl proteins compete with the deacetylase for tubulin binding and thus promote polymerization (12). While destabilizing microtubules in other cells (13), RhoA appears to activate HDAC6 in glass-generated osteoclasts, suggesting the GTPase negatively regulates the cell. When on bone, however, osteoclasts in which RhoA is inhibited lose their apical-basal polarity and, consequently, are incapable of optimal resorption (6). Furthermore, RhoA promotes actin ring and podosome formation and osteoclast motility (6;14). When osteoclasts contact bone, RhoA is activated and localizes to the cytoskeleton (15;16). The fact that RhoA activation is diminished, in osteoclasts lacking $\alpha v\beta 3$, establishes that the GTPase is regulated by the integrin (3). Because of the conflicting phenotypes of osteoclasts on plastic or bone, the impact of active RhoA on stability of their microtubules remains unknown.

The Ruffled Border Is King

The ruffled border is the morphological *sine qua non* of the resorbing osteoclast as only its presence assures that the cell is

degrading bone and its absence indicates the cell is not doing so. Reflecting multiple contacts with bone and attendant sealing zones, ruffled borders are also numerous in a given osteoclast.

This complex enfolding of the plasma membrane, unique to the osteoclast, abuts and extends into the resorptive space. It is surrounded by the sealing zone and is the venue by which the cell secretes matrix-degrading molecules on the bone surface (17). It is therefore the resorptive organelle and is absent or deranged in many forms of osteopetrosis. As osteoclast resorption alternates with migration, the ruffled border is a transient structure.

The ruffled border, which forms only upon contact with mineralized substrate, is initiated by transport of cathepsin K – and/or H^+ ATPase – and Cl^- channel-bearing vesicles to the bone-apposed plasma membrane (17), likely under the aegis of GTPases such as Rabs 7, 9 and 3 (18-22). While unproven, studies in chicken osteoclasts raise the possibility that ruffled border-forming vesicles may polarize to the resorptive surface via microtubules (23). The polarized vesicles fuse with the bone-apposed plasma membrane, to increase its complexity, via a process mirroring exocytosis (17). Similar to that occurring in the context of neurotransmitter exocytosis, vesicle/plasmalemma fusion is regulated by v- (vesicular) and t- (target) SNAREs (soluble N-ethylmaleimide-sensitive fusion protein (NSF) attachment protein (SNAP) receptors) (24).

Ruffled border formation requires a synaptotagmin (Syt) linking the vesicle and target plasma membrane. Fifteen Syt isoforms have been identified in mammalian cells but Syt VII generates ruffled borders and is essential for bone degradation (17). Syt VII also enables osteoblasts to secrete bone matrix proteins and as such, both resorption and formation are repressed in Syt VII-deficient mice.

Autophagy is a cellular degradative process by which cells recycle organelles and long-lived proteins. Autophagosomes, which are

double-membrane bound vesicles, envelop and then deliver cellular components to lysosomes for degradation. While the process promotes survival in starved or stressed cells as well as maintenance of organelle quality (25-27), recent evidence indicates it may also participate in regulated exocytosis (28). In fact, Atg5, Atg7 and LC3 β autophagy proteins, representing the two ubiquitin-like conjugation systems, are important for generation of the osteoclast ruffled border and the secretory function of osteoclasts both *in vitro* and *in vivo*. Thus, osteoclasts lacking these proteins do not efficiently polarize cathepsin K to the resorptive microenvironment and are incapable of optimal bone resorption (29).

Integrin Activity Starts It All

Skeletal resorption requires osteoclast-bone recognition that is mediated by α/β heterodimers known as integrins. $\beta 1$ -containing heterodimers probably participate in the process but $\alpha v/\beta 3$ is the key integrin regulating skeletal degradation (30). While the αv subunit is constitutively expressed throughout osteoclastogenesis, the associated β chains alter with differentiation. Specifically, immature osteoclast precursors, in the form of bone marrow macrophages, express abundant $\alpha v\beta 5$ and little $\alpha v\beta 3$. As the cells commit to the osteoclast phenotype, the magnitude of expression of the two heterodimers reverses (31). Hence, $\alpha v/\beta 3$ is a relatively specific marker of osteoclastogenesis. This integrin is liganded by the amino acids Arg-Gly-Asp (RGD), a motif present in bone proteins such as osteopontin and bone sialoprotein. Small molecules mimicking this sequence suppress osteoclast activity and are candidate anti-resorptive drugs (32-34).

In keeping with its governance of osteoclast function, absence of $\alpha v/\beta 3$, globally and conditionally in osteoclasts, increases bone mass and protects against estrogen-deficient osteoporosis (35;36). Reflecting the integrin's role in cytoskeletal organization, $\alpha v/\beta 3$ deficiency yields deranged ruffled borders, failure of cell spreading and sub-optimal bone resorption (35). Consequently,

$\beta 3(-/-)$ mice are hypocalcemic and osteoclast number is substantially increased in these animals, likely reflecting secondary hyperparathyroidism and an abundance of osteoclastogenic cytokines in the marrow (35;37;38). However, in contrast, absence of $\alpha v/\beta 3$ diminishes the abundance of the polykaryons *in vitro* (33). As differentiation, apoptosis and precursor proliferation are not compromised, a reasonable hypothesis holds that the paucity of osteoclasts, in culture, reflects cytoskeletal dysfunction, and specifically impairment of migration necessary for cell fusion.

$\alpha v/\beta 3$ signaling in osteoclasts is initiated by changing the integrin's conformation from a low to a high affinity state by outside-in or inside-out activation (3;39). Outside-in activation is characterized by integrin clustering, thereby increasing avidity and affinity. Inside-out activation is an indirect event wherein signals emanating from liganded growth factor or cytokine receptors target the integrin's intracellular region, changing its conformation and consequently, that of the extracellular domain (40). As will be discussed, the adaptor protein, talin, is essential for inside-out $\alpha v/\beta 3$ activation in osteoclasts and its absence arrests bone resorption.

Resorption is a cyclical event wherein a portion of the osteoclast migrates to a candidate bone resorptive site and forms an actin ring and ruffled border. Following matrix degradation, the cell detaches and re-initiates the cycle. Prior to bone recognition, the integrin is predominantly in a low affinity state and confined to podosomes within the sealing zone (3;41). Activated $\alpha v/\beta 3$ leaves the podosome and transits to lamellipodia that mediate motility, compromised in the absence of the integrin (3). During resorption, the heterodimer appears in the ruffled membrane (3;41).

Integrins serve as attachment molecules but their intracellular transmission of matrix-derived signals is at least as important. For example, $\alpha v/\beta 3$ substrate robustly activates ERKs in wild-type osteoclastic cells but not those lacking the integrin (3). Since

activation of these MAP kinases typically stimulates proliferation, their absence in $\beta 3$ knockout osteoclasts may contribute to their reduced numbers *in vitro*.

How Does $\alpha v/\beta 3$ Do It?

In 1991, Soriano *et al.* determined that c-src deletion eventuates in severe osteopetrosis due to osteoclast dysfunction (42). Interestingly, c-src-deficient mice, like those lacking $\alpha v/\beta 3$, have increased numbers of osteoclasts that fail to organize their cytoskeleton. c-src is a tyrosine kinase and an adaptor protein and both functions are necessary for optimal cytoskeletal organization (43).

Because c-src- and $\alpha v/\beta 3$ -deficient osteoclasts share qualitatively similar cytoskeletal features, the kinase presents as a mediator of integrin signaling. In fact, under the aegis of phospholipase C γ (PLC $\gamma 2$) (44), c-src binds directly to the $\beta 3$ subunit in the bone resorptive cell, and we have found this to be a constitutive event (45). Others, however, propose that $\alpha v/\beta 3$ occupancy phosphorylates the focal adhesion kinase family member, Pyk2, which recruits c-src to the integrin (44;46). $\alpha v/\beta 3$ -associated c-src phosphorylates c-Cbl which, in turn, inhibits c-src's activity (3;47). Regardless of the mechanism of association, c-src activation requires integrin occupancy and again, signaling via PLC $\gamma 2$. Activated c-src prompts podosomal disassembly, most probably by phosphorylating cortactin (48;49). Hence, podosomes are more abundant in c-src(-/-) than wild-type osteoclasts and the mutant cells are less motile. In keeping with Pyk2 regulating the cell's cytoskeleton, osteoclasts lacking the kinase are unable to generate normal sealing zones on bone (11). The cytoskeletal effects of Pyk2, however, may reflect its promotion of tubulin acetylation.

Syk is another non-receptor tyrosine kinase mediating $\alpha v/\beta 3$ signaling in osteoclasts. Upon integrin occupancy it binds the $\beta 3$ cytoplasmic domain close to c-src, which activates it (45). Syk is also negatively

regulated by the ubiquitinating activity of c-Cbl (50;51).

The ITAM-bearing adaptors, Dap 12 and FcR γ , are expressed by osteoclasts and their combined, but not individual deletion prompts severe osteopetrosis (45;52-54). While deletion of both co-stimulatory molecules is reported to arrest osteoclastogenesis (55), we find such is not the case (56), suggesting their resorptive abnormality reflects deranged osteoclast function but not generation. The same obtains regarding osteoblast-mediated generation of osteoclasts lacking Dap12, with or without FcR γ . These mutant cells form in normal numbers but fail to organize their cytoskeleton or resorb bone. Among the most dramatic consequences of this dysfunction is the inability of Dap12(-/-) osteoclasts to migrate through a layer of osteoblasts, required to attach to a candidate resorptive bone surface (56;57). Thus the dominant role of ITAM proteins in the osteoclast appears to be cytoskeletal organization and not differentiation (56;58).

Syk-mediated organization of the osteoclast cytoskeleton involves Vav3. This guanine nucleotide exchange factor (GEF) is uniquely expressed in abundance in the cell and activated upon $\alpha v/\beta 3$ occupancy in a SLP-76-dependent manner (15;59). Vavs transit cytoskeleton-organizing Rho GTPases from their inactive GDP- to their active GTP-associated conformation. Thus, Vav3(-/-) osteoclasts are dysfunctional and the mice from which they are derived are osteopetrotic.

Vavs are Rac GEFs and it is therefore not surprising that this Rho GTPase regulates the osteoclast cytoskeleton in an $\alpha v/\beta 3$ -dependent manner (60;61). The two isoforms expressed in osteoclasts, Rac1 and Rac2, are mutually compensatory (62). Effective deletion of both, however, produces severe osteopetrosis in which osteoclasts fail to organize their cytoskeleton. Absence of the related Rho family GTPase, cdc42, also causes osteopetrosis but in this circumstance the dominant mechanism is arrested osteoclast

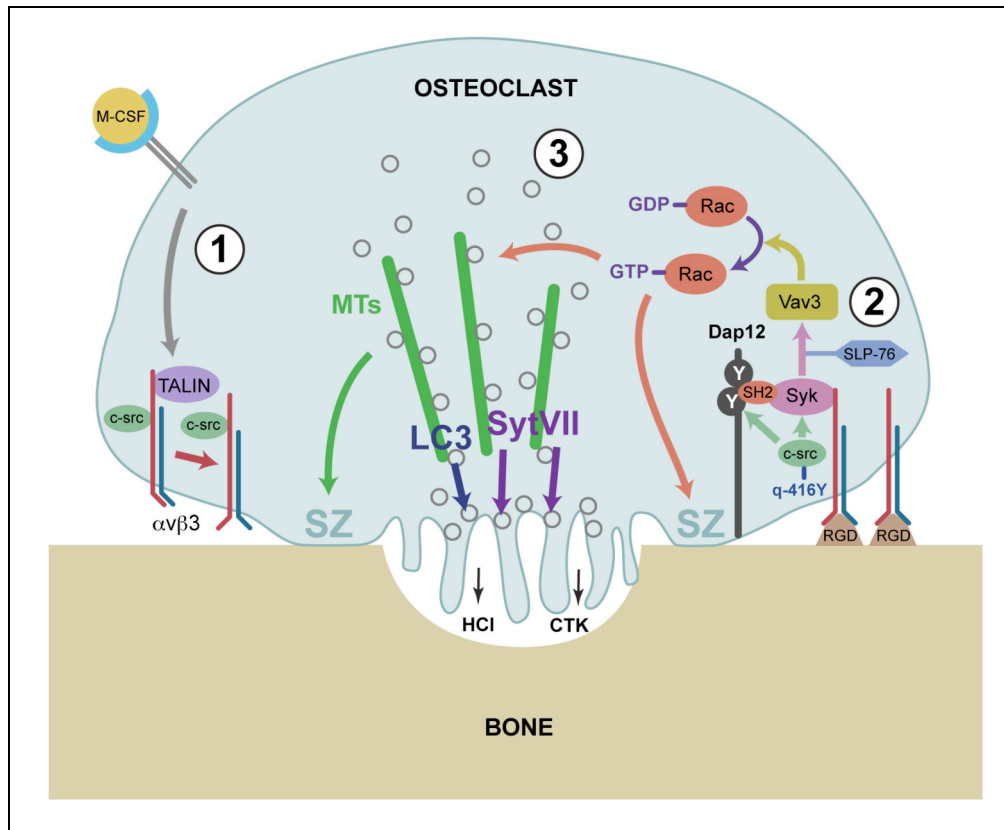


Fig. 1. Proposed mechanism organizing the cytoskeleton of resorbing osteoclasts. 1). M-CSF occupying its receptor, c-fms, stimulates inside-out $\alpha_V\beta_3$ activation by inducing talin association with the β_3 cytoplasmic domain that binds c-src constitutively. 2). Clustering of the integrin by RGD ligand increases avidity as well as affinity by outside-in activation. The liganded integrin activates c-src as evidenced by Y416 phosphorylation. Activated c-src tyrosine phosphorylates ITAM proteins that recruit Syk to the integrin by binding Syk-SH2 domains. c-src activates β_3 -associated Syk that phosphorylates Vav3 in the context of SLP-76. Vav3 then shuttles Rac-GDP to its activated GTP-associated state. 3). Rac-GTP prompts association of lysosome-derived secretory vesicles with microtubules (MTs) that deliver them to the bone-apposed plasma membrane into which they insert under the influence of Syt VII and LC3. Rac-GTP and MTs also promote sealing zone (SZ) formation. Secretory vesicle fusion expands the plasma membrane forming the ruffled border and eventuating in discharge of cathepsin K (CTK) and HCl into the resorptive microenvironment.

recruitment due to inhibited precursor proliferation and accelerated apoptosis of the mature polykaryon (63).

M-CSF Helps $\alpha_V\beta_3$

RANK ligand (RANKL) and M-CSF are the requisite osteoclastogenic cytokines but each also promotes the resorptive activity of the mature polykaryon. In the case of M-CSF, the cytokine interacting with its receptor, c-fms, stimulates a signaling pathway remarkably similar to that induced by $\alpha_V\beta_3$, thereby organizing the cytoskeleton (37;58;64). The means by

which M-CSF structures the osteoclast cytoskeleton may, therefore, be independent of the integrin, or alternatively, represent inside-out $\alpha_V\beta_3$ activation. In fact, M-CSF transits $\alpha_V\beta_3$ from its default low affinity to its high affinity conformation by inducing talin binding to the β_3 cytoplasmic domain (39). Absence of talin, in osteoclast precursors, does not arrest differentiation but blocks substrate adherence and motility. The impaired function of talin-deficient osteoclasts results in a 5-fold increase in the bone mass of mutant mice. Interestingly, the osteopetrotic phenotype of mice with *talin* (-/-) osteoclasts is more severe than of those

lacking $\alpha v/\beta 3$, which likely represents arrest of compensatory integrins, particularly those bearing $\beta 1$ (30;35).

Conclusion

The magnitude of bone resorption reflects osteoclast number and function of the individual cell, the latter dependent upon cytoskeletal organization. The osteoclast cytoskeleton is a unique structure whose conversion to its active state depends upon contact with mineralized matrix (Fig. 1). These extracellular signals, which polarize the resorptive machinery to the bone-cell interface, are transmitted intracellularly by integrins dominated by $\alpha v/\beta 3$. In conjunction with M-CSF-stimulated inside-out activation, a canonical signaling pathway emanates from the $\alpha v/\beta 3$ integrin. Occupancy of the heterodimer phosphorylates constitutively associated c-src which in turn targets Dap 12. The ITAM's phosphotyrosines serve to recruit Syk to the $\beta 3$ cytoplasmic domain where it is also phosphorylated by c-src. Utilizing SLP-76, Syk activates Vav3, eventuating in formation of Rac-GTP and organization of the resorptive cytoskeleton. Given current concerns regarding long-acting anti-resorptive agents, such as bisphosphonates, short-acting counterparts are in demand. Delineating the molecular mechanism by which osteoclasts organize their cytoskeleton to degrade bone has provided an array of candidate therapeutic targets.

Conflict of Interest: None reported.

Peer Review: This article has been peer-reviewed.

References

1. Teitelbaum SL. Bone resorption by osteoclasts. *Science*. 2000 Sep 1;289(5484):1504-8.
2. Marchisio PC, Bergui L, Corbascio GC, Cremona O, D'Urso N, Schena M, Tesio L, Caligaris-Cappio F. Vinculin, talin, and integrins are localized at specific adhesion sites of malignant B lymphocytes. *Blood*. 1988 Aug;72(2):830-3.
3. Faccio R, Novack DV, Zallone A, Ross FP, Teitelbaum SL. Dynamic changes in the osteoclast cytoskeleton in response to growth factors and cell attachment are controlled by beta3 integrin. *J Cell Biol*. 2003 Aug 4;162(3):499-509.
4. Saltel F, Chabadel A, Bonnelye E, Jurdic P. Actin cytoskeletal organisation in osteoclasts: a model to decipher transmigration and matrix degradation. *Eur J Cell Biol*. 2008 Sep;87(8-9):459-68.
5. Chabadel A, Bañon-Rodríguez I, Cluet D, Rudkin BB, Wehrle-Haller B, Genot E, Jurdic P, Anton IM, Saltel F. CD44 and beta3 integrin organize two functionally distinct actin-based domains in osteoclasts. *Mol Biol Cell*. 2007 Dec;18(12):4899-910.
6. Saltel F, Destaing O, Bard F, Eichert D, Jurdic P. Apatite-mediated actin dynamics in resorbing osteoclasts. *Mol Biol Cell*. 2004 Dec;15(12):5231-41.
7. Destaing O, Sanjay A, Itzstein C, Horne WC, Toomre D, De Camilli P, Baron R. The tyrosine kinase activity of c-Src regulates actin dynamics and organization of podosomes in osteoclasts. *Mol Biol Cell*. 2008 Jan;19(1):394-404.
8. Luxenburg C, Geblinger D, Klein E, Anderson K, Hanein D, Geiger B, Addadi L. The architecture of the adhesive apparatus of cultured osteoclasts: from podosome formation to sealing zone assembly. *PLoS ONE*. 2007 Jan 31;2(1):e179.
9. Waterman-Storer CM, Salmon E. Positive feedback interactions between microtubule and actin dynamics during cell motility. *Curr Opin Cell Biol*. 1999 Feb;11(1):61-7.
10. Destaing O, Saltel F, Gilquin B, Chabadel A, Khochbin S, Ory S, Jurdic P. A novel Rho-mDia2-HDAC6 pathway controls podosome patterning through

- microtubule acetylation in osteoclasts. *J Cell Sci.* 2005 Jul 1;118(Pt 13):2901-11.
11. Gil-Henn H, Destaing O, Sims NA, Aoki K, Alles N, Neff L, Sanjay A, Bruzzaniti A, De Camilli P, Baron R, Schlessinger J. Defective microtubule-dependent podosome organization in osteoclasts leads to increased bone density in *Pyk2(-/-)* mice. *J Cell Biol.* 2007 Sep 10; 178(6):1053-64.
 12. Purev E, Neff L, Horne WC, Baron R. c-Cbl and Cbl-b act redundantly to protect osteoclasts from apoptosis and to displace HDAC6 from beta-tubulin, stabilizing microtubules and podosomes. *Mol Biol Cell.* 2009 Sep;20(18):4021-30.
 13. Cook TA, Nagasaki T, Gundersen GG. Rho guanosine triphosphatase mediates the selective stabilization of microtubules induced by lysophosphatidic acid. *J Cell Biol.* 1998 Apr 6;141(1):175-85.
 14. Chellaiah MA, Soga N, Swanson S, McAllister S, Alvarez U, Wang D, Dowdy SF, Hruska KA. Rho-A is critical for osteoclast podosome organization, motility, and bone resorption. *J Biol Chem.* 2000 Apr 21;275(16):11993-2002.
 15. Faccio R, Teitelbaum SL, Fujikawa K, Chappel J, Zallone A, Tybulewicz VL, Ross FP, Swat W. Vav3 regulates osteoclast function and bone mass. *Nat Med.* 2005 Mar;11(3):284-90.
 16. Lakkakorpi PT, Wesolowski G, Zimolo Z, Rodan GA, Rodan SB. Phosphatidylinositol 3-kinase association with the osteoclast cytoskeleton, and its involvement in osteoclast attachment and spreading. *Exp Cell Res.* 1997 Dec 15;237(2):296-306.
 17. Zhao H, Ito Y, Chappel J, Andrews NW, Teitelbaum SL, Ross FP. Synaptotagmin VII regulates bone remodeling by modulating osteoclast and osteoblast secretion. *Dev Cell.* 2008 Jun;14(6):914-25.
 18. Abu-Amer Y, Teitelbaum SL, Chappel JC, Schlesinger P, Ross FP. Expression and regulation of RAB3 proteins in osteoclasts and their precursors. *J Bone Miner Res.* 1999 Nov;14(11):1855-60.
 19. Zhao H, Laitala-Leinonen T, Parikka V, Väänänen HK. Downregulation of small GTPase Rab7 impairs osteoclast polarization and bone resorption. *J Biol Chem.* 2001 Oct 19;276(42):39295-302.
 20. Van Wesenbeeck L, Odgren PR, Coxon FP, Frattini A, Moens P, Perdu B, MacKay CA, Van Hul E, Timmermans JP, Vanhoenacker F, Jacobs R, Peruzzi B, Teti A, Helfrich MH, Rogers MJ, Villa A, Van Hul W. Involvement of PLEKHM1 in osteoclastic vesicular transport and osteopetrosis in incisors absent rats and humans. *J Clin Invest.* 2007 Apr;117(4):919-30.
 21. Pavlos NJ, Xu J, Riedel D, Yeoh JS, Teitelbaum SL, Papadimitriou JM, Jahn R, Ross FP, Zheng MH. Rab3D regulates a novel vesicular trafficking pathway that is required for osteoclastic bone resorption. *Mol Cell Biol.* 2005 Jun;25(12):5253-69.
 22. Zhao H, Ettala O, Väänänen HK. Intracellular membrane trafficking pathways in bone-resorbing osteoclasts revealed by cloning and subcellular localization studies of small GTP-binding rab proteins. *Biochem Biophys Res Commun.* 2002 May 10;293(3):1060-5.
 23. Abu-Amer Y, Ross FP, Schlesinger P, Tondravi MM, Teitelbaum SL. Substrate recognition by osteoclast precursors induces C-src/microtubule association. *J Cell Biol.* 1997 Apr 7;137(1):247-58.
 24. Jahn R, Scheller RH. SNAREs--engines for membrane fusion. *Nat Rev Mol Cell Biol.* 2006 Sep;7(9):631-43.

25. Mizushima N, Yoshimori T, Levine B. Methods in mammalian autophagy research. *Cell*. 2010 Feb 5;140(3):313-26.
26. Virgin HW, Levine B. Autophagy genes in immunity. *Nat Immunol*. 2009 May;10(5):461-70.
27. Levine B, Kroemer G. Autophagy in the pathogenesis of disease. *Cell*. 2008 Jan 11;132(1):27-42.
28. Cadwell K, Liu JY, Brown SL, Miyoshi H, Loh J, Lennerz JK, Kishi C, Kc W, Carrero JA, Hunt S, Stone CD, Brunt EM, Xavier RJ, Sleckman BP, Li E, Mizushima N, Stappenbeck TS, Virgin HW 4th. A key role for autophagy and the autophagy gene Atg16L1 in mouse and human intestinal Paneth cells. *Nature*. 2008 Nov 13;456(7219):259-63.
29. DeSelm C, Miller B, Zou W, Virgin H, Teitelbaum S. Autophagy related proteins mediate osteoclast function in vitro and in vivo. *J Bone Miner Res*. 2010;25(Suppl 1). [[Abstract](#)]
30. Helfrich MH, Nesbitt SA, Lakkakorpi PT, Barnes MJ, Bodary SC, Shankar G, Mason WT, Mendrick DL, Väänänen HK, Horton MA. Beta 1 integrins and osteoclast function: involvement in collagen recognition and bone resorption. *Bone*. 1996 Oct;19(4):317-28.
31. Inoue M, Ross FP, Erdmann JM, Abu-Amer Y, Wei S, Teitelbaum SL. Tumor necrosis factor alpha regulates alpha(v)beta5 integrin expression by osteoclast precursors in vitro and in vivo. *Endocrinology*. 2000 Jan;141(1):284-90.
32. Yamamoto M, Fisher JE, Gentile M, Seedor JG, Leu CT, Rodan SB, Rodan GA. The integrin ligand echistatin prevents bone loss in ovariectomized mice and rats. *Endocrinology*. 1998 Mar;139(3):1411-9.
33. Engleman VW, Nickols GA, Ross FP, Horton MA, Griggs DW, Settle SL, Ruminski PG, Teitelbaum SL. A peptidomimetic antagonist of the alpha(v)beta3 integrin inhibits bone resorption in vitro and prevents osteoporosis in vivo. *J Clin Invest*. 1997 May 1;99(9):2284-92.
34. Murphy MG, Cerchio K, Stoch SA, Gottesdiener K, Wu M, Recker R; L-000845704 Study Group. Effect of L-000845704, an alphaVbeta3 integrin antagonist, on markers of bone turnover and bone mineral density in postmenopausal osteoporotic women. *J Clin Endocrinol Metab*. 2005 Apr;90(4):2022-8.
35. McHugh KP, Hodivala-Dilke K, Zheng MH, Namba N, Lam J, Novack D, Feng X, Ross FP, Hynes RO, Teitelbaum SL. Mice lacking beta3 integrins are osteosclerotic because of dysfunctional osteoclasts. *J Clin Invest*. 2000 Feb;105(4):433-40.
36. Zhao H, Kitaura H, Sands MS, Ross FP, Teitelbaum SL, Novack DV. Critical role of beta3 integrin in experimental postmenopausal osteoporosis. *J Bone Miner Res*. 2005 Dec;20(12):2116-23.
37. Faccio R, Takeshita S, Zallone A, Ross FP, Teitelbaum SL. c-Fms and the alphavbeta3 integrin collaborate during osteoclast differentiation. *J Clin Invest*. 2003 Mar;111(5):749-58.
38. Weir EC, Lowik CW, Paliwal I, Insogna KL. Colony stimulating factor-1 plays a role in osteoclast formation and function in bone resorption induced by parathyroid hormone and parathyroid hormone-related protein. *J Bone Miner Res*. 1996 Oct;11(10):1474-81.
39. Zou W, Petrich B, Monkley S, Critchley D, Ginsberg M, Teitelbaum S. Talin is critical for osteoclast function by mediating inside-out integrin activation. *J Bone Miner Res*. 2010;25(Suppl 1). [[Abstract](#)]

40. Shattil SJ, Kim C, Ginsberg MH. The final steps of integrin activation: the end game. *Nat Rev Mol Cell Biol.* 2010 Apr;11(4):288-300.
41. Faccio R, Grano M, Colucci S, Villa A, Giannelli G, Quaranta V, Zallone A. Localization and possible role of two different alpha v beta 3 integrin conformations in resting and resorbing osteoclasts. *J Cell Sci.* 2002 Jul 15;115(Pt 14):2919-29.
42. Soriano P, Montgomery C, Geske R, Bradley A. Targeted disruption of the c-src proto-oncogene leads to osteopetrosis in mice. *Cell.* 1991 Feb 22;64(4):693-702.
43. Schwartzberg PL, Xing L, Hoffmann O, Lowell CA, Garrett L, Boyce BF, Varmus HE. Rescue of osteoclast function by transgenic expression of kinase-deficient Src in src^{-/-} mutant mice. *Genes Dev.* 1997 Nov 1;11(21):2835-44.
44. Eppler H, Cremasco V, Zhang K, Mao D, Longmore GD, Faccio R. Phospholipase Cgamma2 modulates integrin signaling in the osteoclast by affecting the localization and activation of Src kinase. *Mol Cell Biol.* 2008 Jun;28(11):3610-22.
45. Zou W, Kitaura H, Reeve J, Long F, Tybulewicz VL, Shattil SJ, Ginsberg MH, Ross FP, Teitelbaum SL. Syk, c-Src, the alpha(v)beta3 integrin, and ITAM immunoreceptors, in concert, regulate osteoclastic bone resorption. *J Cell Biol.* 2007 Mar 12;176(6):877-88.
46. Sanjay A, Houghton A, Neff L, DiDomenico E, Bardelay C, Antoine E, Levy J, Gailit J, Bowtell D, Horne WC, Baron R. Cbl associates with Pyk2 and Src to regulate Src kinase activity, alpha(v)beta3 integrin-mediated signaling, cell adhesion, and osteoclast motility. *J Cell Biol.* 2001 Jan 8;152(1):181-95.
47. Duong LT, Rodan GA. PYK2 is an adhesion kinase in macrophages, localized in podosomes and activated by beta(2)-integrin ligation. *Cell Motil Cytoskeleton.* 2000 Nov;47(3):174-88.
48. Wu H, Reynolds AB, Kanner SB, Vines RR, Parsons JT. Identification and characterization of a novel cytoskeleton-associated pp60src substrate. *Mol Cell Biol.* 1991 Oct;11(10):5113-24.
49. Tehrani S, Faccio R, Chandrasekar I, Ross FP, Cooper JA. Cortactin has an essential and specific role in osteoclast actin assembly. *Mol Biol Cell.* 2006 Jul;17(7):2882-95.
50. Shao Y, Yang C, Elly C, Liu YC. Differential regulation of the B cell receptor-mediated signaling by the E3 ubiquitin ligase Cbl. *J Biol Chem.* 2004 Oct 15;279(42):43646-53.
51. Zou W, Reeve JL, Zhao H, Ross FP, Teitelbaum SL. Syk tyrosine 317 negatively regulates osteoclast function via the ubiquitin-protein isopeptide ligase activity of Cbl. *J Biol Chem.* 2009 Jul 10;284(28):18833-9.
52. Faccio R, Zou W, Colaianni G, Teitelbaum SL, Ross FP. High dose M-CSF partially rescues the Dap12^{-/-} osteoclast phenotype. *J Cell Biochem.* 2003 Dec 1;90(5):871-83.
53. Mócsai A, Humphrey MB, Van Ziffle JA, Hu Y, Burghardt A, Spusta SC, Majumdar S, Lanier LL, Lowell CA, Nakamura MC. The immunomodulatory adapter proteins DAP12 and Fc receptor gamma-chain (FcRgamma) regulate development of functional osteoclasts through the Syk tyrosine kinase. *Proc Natl Acad Sci U S A.* 2004 Apr 20;101(16):6158-63.
54. Tomasello E, Vivier E. KARAP/DAP12/TYROBP: three names and a multiplicity of biological functions. *Eur J Immunol.* 2005 Jun;35(6):1670-7.
55. Koga T, Inui M, Inoue K, Kim S, Suematsu A, Kobayashi E, Iwata T, Ohnishi H, Matozaki T, Kodama T,

- Taniguchi T, Takayanagi H, Takai T. Costimulatory signals mediated by the ITAM motif cooperate with RANKL for bone homeostasis. *Nature*. 2004 Apr 15;428(6984):758-63.
56. Zou W, Zhu T, Craft CS, Broekelmann TJ, Mecham RP, Teitelbaum SL. Cytoskeletal dysfunction dominates in DAP12-deficient osteoclasts. *J Cell Sci*. 2010 Sep 1;123(Pt 17):2955-63.
57. Saltel F, Chabadel A, Zhao Y, Lafage-Proust MH, Clézardin P, Jurdic P, Bonnelye E. Transmigration: a new property of mature multinucleated osteoclasts. *J Bone Miner Res*. 2006 Dec;21(12):1913-23.
58. Zou W, Reeve JL, Liu Y, Teitelbaum SL, Ross FP. DAP12 couples c-Fms activation to the osteoclast cytoskeleton by recruitment of Syk. *Mol Cell*. 2008 Aug 8;31(3):422-31.
59. Reeve JL, Zou W, Liu Y, Maltzman JS, Ross FP, Teitelbaum SL. SLP-76 couples Syk to the osteoclast cytoskeleton. *J Immunol*. 2009 Aug 1;183(3):1804-12.
60. Razzouk S, Lieberherr M, Cournot G. Rac-GTPase, osteoclast cytoskeleton and bone resorption. *Eur J Cell Biol*. 1999 Apr;78(4):249-55.
61. Hall A. G proteins and small GTPases: distant relatives keep in touch. *Science*. 1998 Jun 26;280(5372):2074-5.
62. Croke M, Ross F, Teitelbaum S. Rac deletion in osteoclasts causes severe osteopetrosis. *J Bone Miner Res*. 2010;25(Suppl 1). [[Abstract](#)]
63. Ito Y, Teitelbaum SL, Zou W, Zheng Y, Johnson JF, Chappel J, Ross FP, Zhao H. Cdc42 regulates bone modeling and remodeling in mice by modulating RANKL/M-CSF signaling and osteoclast polarization. *J Clin Invest*. 2010 Jun 1;120(6):1981-93.
64. Ross FP, Teitelbaum SL. alphavbeta3 and macrophage colony-stimulating factor: partners in osteoclast biology. *Immunol Rev*. 2005 Dec;208:88-105.