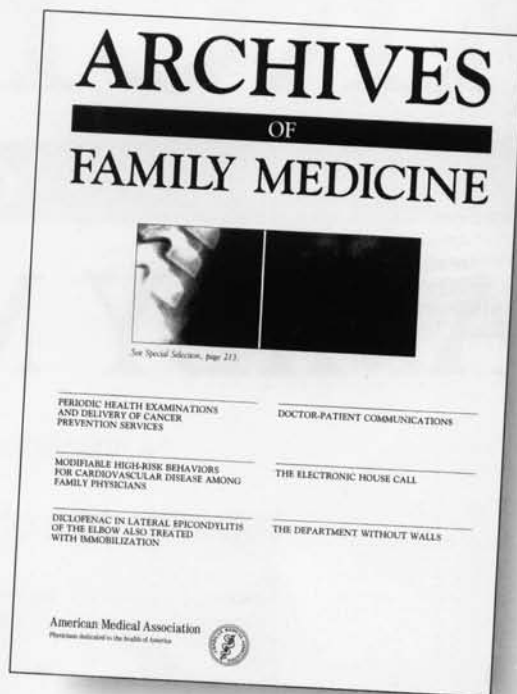


Make your  
reading count.



Earn career-enhancing CME credit free  
with the *Archives of Family Medicine*.



*Archives of Family Medicine* is more valuable than ever, because now you can earn CME credit, in addition to getting hard-hitting practical science. The Archives CME Program helps you turn information into knowledge by giving you:

- The opportunity to earn up to 3 hours of AMA PRA category 1 credit and AAFP Prescribed credit with each issue.
- Access to original articles that are clinically relevant and academically sound, with a comprehensive curriculum of topics developed annually by our editorial board.
- A unique learning experience that includes a self-assessment quiz, which enables you to regularly test your progress while learning at your own pace.
- The opportunity to make the *Archives of Family Medicine* more useful to you and to your specialty, by providing feedback on the educational value of every issue.

Find out how you can qualify for a free subscription to *Archives of Family Medicine* today by calling 1-312-670-SUBS.\*

The ARCHIVES OF FAMILY MEDICINE is a member of the consortium of AMA journals listed below. The complete text of all AMA journals is available online from Dialog Information Services and Information Access Company.

**The Journal of the American Medical Association (JAMA)**

- Archives of Dermatology
- Archives of Family Medicine
- Archives of General Psychiatry
- Archives of Internal Medicine
- Archives of Neurology
- Archives of Ophthalmology
- Archives of Otolaryngology—Head & Neck Surgery
- Archives of Pathology & Laboratory Medicine
- Archives of Pediatrics & Adolescent Medicine
- Archives of Surgery

The ARCHIVES OF FAMILY MEDICINE (ISSN 1063-3987) is published bi-monthly, by the American Medical Association, 515 N State St, Chicago, IL 60610, and is an official publication of the Association. THE ARCHIVES OF FAMILY MEDICINE reaches more than 40 000 readers in over 40 countries. Periodicals postage paid at Chicago, IL and at additional mailing offices. GST registration number 12622 5556 RT. Canada Post International Publications Mail (Canadian Distribution) Sales Agreement No. 319600. Printed in the USA.

**SUBSCRIPTION RATES**—The personal subscription rates for the ARCHIVES OF FAMILY MEDICINE are \$100 for 1 year (6 issues) in the United States and US possessions; \$130 in the Americas; £90 outside the Americas. The institution rates for 1 year are \$120 in the United States; \$160 in the Americas; £110 outside the Americas. Special rates for residents and medical students are available. Address all subscription communications to: Subscriber Services Center, American Medical Association, PO Box 10946, Chicago, IL 60610-0946. Phone: (800) 262-2350. Fax: (312) 464-5831. E-mail: ama-subs@ama-assn.org. For mailing addresses outside the United States and US possessions, see International Subscription Information.

**CHANGE OF ADDRESS**—POSTMASTER, send all address changes to ARCHIVES OF FAMILY MEDICINE, c/o Subscriber Services, American Medical Association, 515 N State St, Chicago, IL 60610. Please notify us of address change at least 6 weeks in advance to ensure uninterrupted service. Include both old and new addresses, a recent mailing label, and new ZIP code. For mailing addresses

outside the United States and US possessions, see International Subscription Information.

**SUBSCRIBER SERVICES**—For information about subscribing to any of the AMA publications, change of address, missing issues, or purchasing back issues, please contact Subscriber Services Center, American Medical Association, PO Box 10946, Chicago, IL 60610-0946, or call (312) 670-SUBS (670-7827) between 8:30 AM and 4:30 PM CST. Fax: (312) 464-5831. E-mail: ama-subs@ama-assn.org. For mailing addresses outside the United States and US possessions, see International Subscription Information.

**INTERNATIONAL SUBSCRIPTION INFORMATION**—Subscriptions outside the United States and US possessions are served according to geographic region. Please address correspondence to the following 2 offices based on delivery address: (1) For delivery in North America, Central America, and South America, contact Subscriber Services Center, AMA, PO Box 10946, Chicago, IL 60610-0946. Phone (312) 670-7827. Fax: (312) 464-5831. E-mail: ama-subs@ama-assn.org. (2) For delivery outside the Americas, contact JAMA & Archives Journals, Reader Services Centre, PO Box 299, London WC1H 9TD, England. Phone: +44(0)171-383-6270. Fax: +44(0)171-383-6402. E-mail: bmjsubs@dial.pipex.com.

**REPRINTS**—Authors place their reprint order at the time the edited typescript is reviewed and should allow 4 to 6 weeks for delivery following publication. Requests for individual reprints should be sent directly to the author at the address shown in the article.

For bulk reprint orders for distribution by commercial organizations, please contact Wanda Bartolotta, 500 Fifth Ave, #2210, New York, NY 10010. Phone: (212) 354-0050. Fax: (212) 354-1169. E-mail: QGZR06A@Prodigy.com. For reprint orders in limited quantities for distribution by educational organizations, please contact Joseph R. Rekish, 515 N State St, Chicago, IL 60610. Phone: (312) 464-4594. Fax: (312) 464-4849.

**WORLD WIDE WEB ADDRESS**—<http://www.ama-assn.org>.

**FAMILY MEDICINE HOME PAGE**—<http://www.ama-assn.org/family>.

**PERMISSIONS**—Contact Ada Jimenez-Walker, Permissions Assistant, 515 N State St, Chicago, IL 60610. Phone: (312) 464-2513.

**ADVERTISING PRINCIPLES**—Each advertisement in this issue has been reviewed and complies with the principles governing advertising in AMA scientific publications. A copy of these principles is available on request. The appearance of advertising in AMA publications is not an AMA guarantee or endorsement of the product or the claims made for the product by the manufacturer.

**Publication Staff**  
Offices: 515 N State St  
Chicago, IL 60610

**Editorial Processing Department,  
Archives Journals**

**Director:** Paula Glitman  
**Manager:** Vickey Golden

**Freelance Manager:**  
Diane L. Cannon

**Freelance Coordinator:**  
Sandra E. Hazel

**Electronic Editing Specialist:**  
Paul Frank

**Copy Editors:**  
Brenda Gregoline  
Mary Kingzette  
Kate Larson

**Editorial Assistant:** Celina Canchola  
**Scientific Information and  
Multimedia Group**

**Administrative Assistant:** Helga Fritz  
**New Media Editorial Office**

**Editorial Director, New Media:**  
William M. Silberg

**Associate Editor:** Marty Suter

**Assistant Editors:**  
Deborah Flapan  
Neil Shankman

**Staff Assistant:** Marla A. Hall

**Production & Distribution Division**

**Manager, Budgets & Costs:**  
Bonnie Van Clevon

**Office Manager:**  
Karen Branham

**Senior Secretary:**  
Shannon Epplett

**Advertising & Production  
Department**

**Paper & Planning:**  
Karen Adams-Taylor

**Manager, Advertising Services:**  
Carole Piszker

**Manager, Production Services:**  
Susan Price

**Production Associates:**  
Debbie Camp  
Betty Frigero  
Mari Guizzetti  
Sarah Powell  
Jennifer Reiling  
Chad Sanderson  
Mary Ann Schultz  
Carmela Ware

**Production Assistant:**  
Jo Anne Turner

**Distribution**

**Distribution Manager:** Paul Gasielki

**Electronic Production Department**

**Director:** Linda Knott

**Supervisor, Composition & Pagination:**  
Phil Arko

**Electronic Production Operators:**  
Gail Barrett  
Brenda Chandler  
La'son J. Diggs  
Mary Ann Kuranda  
Sandra Lopez

**Graphics Manager:** Charl Richey

**Graphics Operators:**  
Joe Amft  
Ellen Gundersen  
JoAnne Weiskopf  
Alicja Wojcik

**Manager, Proofreading:**  
Teresa H. Omiotek

**Proofreaders:**  
David Antos  
Daniel James  
Mary Kay Tinerella  
Barbara Wojtowicz

**Production Assistant:** Ruth Sprague  
**Database & New Media**

**Electronic Coordinator:**  
Mary Ellen Johnston

**Indexer:** Kathy Gaydar

**Database Assistants:**  
Melanie Parenti  
Vincent Tafoya

**Specialty Journal Division Office**

**Assistant to the Associate Publisher:**  
Christine Hearne

**Publications Marketing &  
New Media Division**

**Administrative Assistant:**  
Millette Jackson-Bates

**Circulation Processing Department**

**Director:** Beverly Martin

**Licensing & Permissions Department**

**Director:** Norman Frankel  
**Indexing:** Kathy Gaydar  
**Permissions:** Ada Jimenez-Walker

**Reprints**

**Reprint Coordinator:** Joseph Rekish



# ARCHIVES

OF

# FAMILY MEDICINE

VOL 6 NO. 6, NOVEMBER/DECEMBER 1997

## SPECIAL SELECTION

- Clinical Picture** 521  
*Mukadder A. Selimoğlu, MD;*  
*Uğur Dilmen, MD;*  
*Cahit Karakelleoğlu, MD;*  
*Hürol Bitlisli, MD;*  
*Walter W. Tunnessen, Jr, MD*

## ARCHIVES CME

- The Archives of Family Medicine** 523  
**Continuing Medical Education Program**
- Self-assessment Quiz: CME Questions** 524  
**for November/December 1997**

## LETTERS TO THE EDITOR

- What Is a Cost-effectiveness Analysis?** 527  
*Diane M. Harper, MD, MPH*
- In Reply** 528  
*Marcia J. Chesebro, MD;*  
*W. Douglas Everett, MD, MPH*

## SPECIAL ARTICLES

- The Impact of Title VII Departmental and** 531  
**Predoctoral Support on the Production**  
**of Generalist Physicians in Private**  
**Medical Schools**  
*Robert M. Politzer, ScD; Stan Horab, MPH;*  
*Enrique Fernandez, MD; Sandy Gamliel;*  
*Norman Kahn, MD; Fitzhugh Mullan, MD*

- Concerns Regarding Universal Varicella** 537  
**Immunization: Time Will Tell**  
*Lori L. MacFarlane, PharmD, BCPS;*  
*Melissa L. Sanders, PharmD;*  
*Peter J. Carek, MD, MS*



## ORIGINAL CONTRIBUTION

- Do Physicians Do as They Say?** 543  
**The Case of Mammography**  
*Barry G. Saver, MD, MPH;*  
*Thomas R. Taylor, MD, PhD;*  
*Jonathan R. Treadwell, PhD;*  
*William G. Cole, PhD*



## EDITORIAL

- Do as I Do, Not as I Say** 549  
*Electra D. Paskett, PhD*

## American Medical Association

Physicians dedicated to the health of America



Copyright 1997 by the American Medical Association. All rights reserved. Reproduction without permission is prohibited.

All articles published, including editorials, letters, and book reviews, represent the opinions of the authors and do not reflect the policy of the American Medical Association, the Editorial Board, or the institution with which the author is affiliated, unless this is clearly specified.

**P. John Seward, MD**  
Executive Vice President

**George D. Lundberg, MD**  
Editor in Chief, Scientific  
Information and Multimedia

**Robert L. Kennett**  
Vice President, Publishing

**Peter L. Payerli**  
Publisher

**Vanessa Hayden**  
Director, Production &  
Distribution Division

**Cheryl Iverson**  
Director, Editorial Processing Division

**Geoffrey A. Flick**  
Manager, Marketing Services

**Advertising Offices: East:** Phillip B. Altamore, Peter G. Messina, Kelly E. Cusack, 119 Cherry Hill Rd, 3rd Flr, Parsippany, NJ 07054 (973) 263-9191.  
**Midwest/West:** Alexis A. O'Connell, 515 N State St, Chicago, IL 60610 (312) 464-2470. **AMA Classified Advertising Department:** Thalia Moss, Supervisor, 800-262-2260.



# independence DAY PRO

Liberating  
patients  
from arthritis  
pain.

All in pursuit of the  
freedom of  
*m o v e m e n t .*

Two caplets, once a day\*

**DAYPRO**<sup>®</sup>  
(oxaprozin) 600-mg  
caplets

**Daylong Confidence. Proactive Control.**

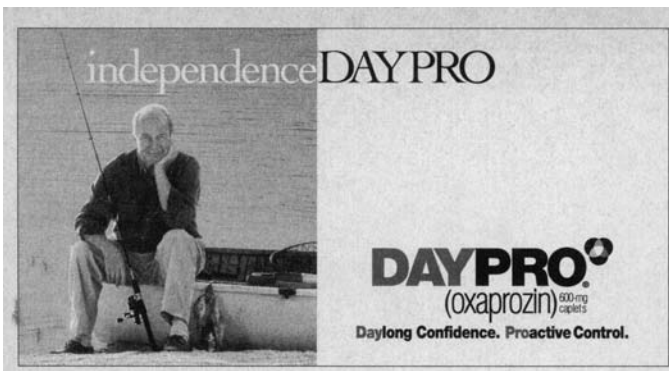


DAYPRO is indicated for the treatment of the signs and symptoms of OA and RA.

\*Usual adult dosage is 1200 mg (two 600-mg caplets) once a day. For osteoarthritis patients of low body weight or with milder disease, an initial dosage of one 600-mg caplet once a day, or an optional one-time loading dose of 1200 mg, may be appropriate. Dosage should be individualized to the lowest effective dose; the maximum recommended total daily dosage is 1800 mg or 26 mg/kg, whichever is lower, in divided doses.

Contraindicated in patients with hypersensitivity to DAYPRO or in individuals with nasal polyps, angioedema, or bronchospastic reactivity to aspirin or other NSAIDs. Severe and occasionally fatal asthmatic and anaphylactic reactions to NSAIDs have been reported; there have been rare reports of anaphylaxis with DAYPRO. As with other NSAIDs, the most frequently reported adverse reactions were related to the GI tract. In patients treated chronically with NSAID therapy, serious GI toxicity, such as bleeding, ulceration, and perforation, can occur. Severe renal and hepatic reactions have been reported. There may be a risk of fatal hepatitis with oxaprozin, such as has been seen with other NSAIDs.

Please see brief summary of prescribing information on adjacent page.



## DAYPRO<sup>®</sup> (oxaprozin) 600-mg caplets

### BRIEF SUMMARY — DAYPRO<sup>®</sup> (oxaprozin) 600-mg caplets Before prescribing please see full prescribing information.

**INDICATIONS AND USAGE:** Daypro is indicated for the treatment of the signs and symptoms of OA and RA.

**CONTRAINDICATIONS:** Hypersensitivity to oxaprozin or any of its components or in individuals with the complete or partial syndrome of nasal polyps, angioedema, and bronchospastic reactivity to aspirin or other nonsteroidal anti-inflammatory drugs (NSAIDs). Severe and occasionally fatal asthmatic and anaphylactic reactions have been reported in patients receiving NSAIDs, and there have been rare reports of anaphylaxis in patients taking oxaprozin.

**WARNINGS: RISK OF GASTROINTESTINAL (GI) ULCERATION, BLEEDING, AND PERFORATION WITH NONSTEROIDAL ANTI-INFLAMMATORY DRUG THERAPY:** Serious gastrointestinal toxicity, such as bleeding, ulceration, and perforation, can occur at any time, with, or without warning symptoms, in patients treated with NSAIDs. Although minor upper gastrointestinal problems, such as dyspepsia, are common, and usually develop early in therapy, physicians should remain alert for ulceration and bleeding in patients treated chronically with NSAIDs, even in the absence of previous GI tract symptoms. In patients observed in clinical trials for several months to 2 years, symptomatic upper GI ulcers, gross bleeding, or perforation appear to occur in approximately 1% of patients treated for 3 to 6 months, and in about 2% to 4% of patients treated for 1 year. Physicians should inform patients about the signs and/or symptoms of serious GI toxicity and what steps to take if they occur. Patients at risk for developing peptic ulceration and bleeding are those with a prior history of serious GI events, alcoholism, smoking, or other factors known to be associated with peptic ulcer disease. Elderly or debilitated patients seem to tolerate ulceration or bleeding less well than other individuals, and most spontaneous reports of fatal GI events are in these populations. Studies to date are inconclusive concerning the relative risk of various NSAIDs in causing such reactions. High doses of any NSAID probably carry a greater risk of these reactions, and substantial benefit should be anticipated to patients prior to prescribing maximal doses of Daypro.

**PRECAUTIONS: General: Hepatic effects:** As with other NSAIDs, borderline elevations of one or more liver tests may occur in up to 15% of patients. These abnormalities may progress, remain essentially unchanged, or resolve with continued therapy. The SGPT (ALT) test is probably the most sensitive indicator of liver dysfunction. Meaningful (3 times the upper limit of normal) elevations of SGOT (AST) occurred in controlled clinical trials of Daypro in just under 1% of patients. A patient with symptoms and/or signs suggesting liver dysfunction or in whom an abnormal liver test has occurred should be evaluated for evidence of the development of more severe hepatic reaction while on therapy with this drug. Severe hepatic reactions including jaundice have been reported with Daypro, and there may be a risk of fatal hepatitis with oxaprozin, such as has been seen with other NSAIDs. Although such reactions are rare, if abnormal liver tests persist or worsen, clinical signs and symptoms consistent with liver disease develop, or systemic manifestations occur (eosinophilia, rash, fever), Daypro should be discontinued. Well-compensated hepatic cirrhosis does not appear to alter the disposition of unbound oxaprozin, so dosage adjustment is not necessary. However, the primary route of elimination of oxaprozin is hepatic metabolism, so caution should be observed in patients with severe hepatic dysfunction. **Renal effects:** Acute interstitial nephritis, hematuria, and proteinuria have been reported with Daypro as with other NSAIDs. Long-term administration of some NSAIDs to animals has resulted in renal papillary necrosis and other abnormal renal pathology. This was not observed with oxaprozin, but the clinical significance of this difference is unknown. A second form of renal toxicity has been seen in patients with preexisting conditions leading to a reduction in renal blood flow, where the renal prostaglandins have a supportive role in the maintenance of renal perfusion. In these patients administration of an NSAID may cause a dose-dependent reduction in prostaglandin formation and may precipitate overt renal decompensation. Patients at greatest risk of this reaction are those with previously impaired renal function, heart failure, or liver dysfunction, those taking diuretics, and the elderly. Discontinuation of NSAID therapy is often followed by recovery to the pretreatment state. Those patients at high risk who chronically take oxaprozin should have renal function monitored if they have signs or symptoms that may be consistent with mild azotemia, such as malaise, fatigue, or loss of appetite. As with all NSAID therapy, patients may occasionally develop some elevation of serum creatinine and BUN levels without any signs or symptoms. The pharmacokinetics of oxaprozin may be significantly altered in patients with renal insufficiency or in patients who are undergoing hemodialysis. Such patients should be started on doses of 600 mg/day, with cautious dosage increases if the desired effect is not obtained. Oxaprozin is not dialyzed because of its high degree of protein binding. Like other NSAIDs, Daypro may worsen fluid retention by the kidneys in patients with uncompensated cardiac failure due to its effect on prostaglandins. It should be used with caution in patients with a history of hypertension, cardiac decompensation, in patients on chronic diuretic therapy, or in those with other conditions predisposing to fluid retention. **Photosensitivity:** Oxaprozin has been associated with rash and/or mild photosensitivity in dermatologic testing. An increased incidence of rash on sun-exposed skin was seen in some patients in the clinical trials. **Recommended laboratory testing:** Because serious GI tract ulceration and bleeding can occur without warning symptoms, physicians should follow chronically treated patients for the signs and symptoms of ulceration and bleeding and should inform them of the importance of this follow-up (see **Warnings**). Anemia may occur in patients receiving oxaprozin or other NSAIDs. This may be due to fluid retention, gastrointestinal blood loss, or an incompletely described effect upon erythropoiesis. Patients on long-term treatment with Daypro should have their hemoglobin or hematocrit values determined at appropriate intervals as determined by the clinical situation. Oxaprozin, like other NSAIDs, can affect platelet aggregation and prolong bleeding time. Daypro should be used with caution in patients with underlying hemostatic defects or in those who are undergoing surgical procedures where a high degree of hemostasis is needed. **Information for patients:** Daypro, like other drugs of its class, nonsteroidal anti-inflammatory drugs (NSAIDs), is not free of side effects. The side effects of these drugs can cause discomfort and, rarely, serious side effects, such as gastrointestinal bleeding, which may result in hospitalization and even fatal outcomes. NSAIDs are often essential agents in the management of arthritis, but they may also be commonly employed for conditions that are less serious. Physicians may wish to discuss with their patients the potential risks (see **Warnings, Precautions, and Adverse Reactions**) and likely benefits of Daypro treatment, particularly in less-serious conditions where treatment without Daypro may represent an acceptable alternative to both the patient and the physician. Patients receiving Daypro may benefit from physician instruction in the symptoms of the more common or serious gastrointestinal, renal,

hepatic, hematologic, and dermatologic adverse effects. **Laboratory test interactions:** False-positive urine immunoassay screening tests for benzodiazepines have been reported in patients taking Daypro. This is due to lack of specificity of the screening tests. False-positive test results may be expected for several days following discontinuation of Daypro therapy. Confirmatory tests, such as gas chromatography/mass spectrometry, will distinguish Daypro from benzodiazepines. **Drug interactions: Aspirin:** Concomitant administration of Daypro and aspirin is not recommended because oxaprozin displaces salicylates from plasma protein binding sites. Coadministration would be expected to increase the risk of salicylate toxicity. **Oral anticoagulants:** The anticoagulant effects of warfarin were not affected by the coadministration of 1200 mg/day of Daypro. Nevertheless, caution should be exercised when adding any drug that affects platelet function to the regimen of patients receiving oral anticoagulants. **H<sub>2</sub>-receptor antagonists:** The total body clearance of oxaprozin was reduced by 20% in subjects who concurrently received therapeutic doses of cimetidine or ranitidine; no other pharmacokinetic parameter was affected. A change of clearance of this magnitude lies within the range of normal variation and is unlikely to produce a clinically detectable difference in the outcome of therapy. **Beta-blockers:** Subjects receiving 1200 mg Daypro qd with 100 mg metoprolol bid exhibited statistically significant but transient increases in sitting and standing blood pressures after 14 days. Therefore, as with all NSAIDs, routine blood pressure monitoring should be considered in these patients when starting Daypro therapy. **Other drugs:** The coadministration of oxaprozin and antacids, acetaminophen, or conjugated estrogens resulted in no statistically significant changes in pharmacokinetic parameters in single- and/or multiple-dose studies. The interaction of oxaprozin with lithium and cardiac glycosides has not been studied. **Carcinogenesis, mutagenesis, impairment of fertility:** In oncogenicity studies, oxaprozin administration for 2 years was associated with the exacerbation of liver neoplasms (hepatic adenomas and carcinomas) in male CD mice, but not in female CD mice or rats. The significance of this species-specific finding to man is unknown. Oxaprozin did not display mutagenic potential. Results from the Ames test, forward mutation in yeast and Chinese hamster ovary (CHO) cells, DNA repair testing in CHO cells, micronucleus testing in mouse bone marrow, chromosomal aberration testing in human lymphocytes, and cell transformation testing in mouse fibroblast all showed no evidence of genetic toxicity or cell-transforming ability. Oxaprozin administration was not associated with impairment of fertility in male and female rats at oral doses up to 200 mg/kg/day (1180 mg/m<sup>2</sup>); the usual human dose is 17 mg/kg/day (629 mg/m<sup>2</sup>). However, testicular degeneration was observed in beagle dogs treated with 37.5 to 150 mg/kg/day (750 to 3000 mg/m<sup>2</sup>) of oxaprozin for 6 months, or 37.5 mg/kg/day for 42 days, a finding not confirmed in other species. The clinical relevance of this finding is not known. **Pregnancy: Teratogenic Effects—Pregnancy Category C.** There are no adequate or well-controlled studies in pregnant women. Teratology studies with oxaprozin were performed in mice, rats, and rabbits. In mice and rats, no drug-related developmental abnormalities were observed at 50 to 200 mg/kg/day of oxaprozin (225 to 900 mg/m<sup>2</sup>). However, in rabbits, infrequent malformed fetuses were observed in dams treated with 7.5 to 30 mg/kg/day of oxaprozin (the usual human dosage range). Oxaprozin should be used during pregnancy only if the potential benefits justify the potential risks to the fetus. **Labor and delivery:** The effect of oxaprozin in pregnant women is unknown. NSAIDs are known to delay parturition, to accelerate closure of the fetal ductus arteriosus, and to be associated with dystocia. Oxaprozin is known to have caused decreases in pup survival in rat studies. Accordingly, the use of oxaprozin during late pregnancy should be avoided. **Nursing mothers:** Studies of oxaprozin excretion in human milk have not been conducted; however, oxaprozin was found in the milk of lactating rats. Since the effects of oxaprozin on infants are not known, caution should be exercised if oxaprozin is administered to nursing women. **Pediatric use:** Safety and effectiveness of Daypro in children have not been established. **Geriatric use:** No adjustment of the dose of Daypro is necessary in the elderly for pharmacokinetic reasons, although many elderly may need to receive a reduced dose because of low body weight or disorders associated with aging. No significant differences in the pharmacokinetic profile for oxaprozin were seen in studies in the healthy elderly. Although selected elderly patients in controlled clinical trials tolerated Daypro as well as younger patients, caution should be exercised in treating the elderly, and extra care should be taken when choosing a dose. As with any NSAID, the elderly are likely to tolerate adverse reactions less well than younger patients.

**ADVERSE REACTIONS:** The most frequently reported adverse reactions were related to the gastrointestinal tract. They were nausea (8%) and dyspepsia (8%). **INCIDENCE GREATER THAN 1%:** In clinical trials the following adverse reactions occurred at an incidence greater than 1% and are probably related to treatment. Reactions occurring in 3% to 9% of patients treated with Daypro are indicated by an asterisk (\*); those reactions occurring in less than 3% of patients are unmarked. Abdominal pain/distress, anorexia, constipation\*, diarrhea\*, dyspepsia\*, flatulence, nausea\*, vomiting, CNS inhibition (depression, sedation, somnolence, or confusion), disturbance of sleep, rash\*, tinnitus, dysuria or frequency. **INCIDENCE LESS THAN 1%: Probable causal relationship:** The following adverse reactions were reported in clinical trials or from worldwide marketing experience at an incidence of less than 1%. Those reactions reported only from worldwide marketing experience are in *italics*. The probability of a causal relationship exists between the drug and these adverse reactions: Drug hypersensitivity reactions including anaphylaxis and serum sickness, edema, blood pressure changes, peptic ulceration and/or GI bleeding (see **Warnings**), liver function abnormalities including hepatitis (see **Precautions**), stomatitis, hemorrhoidal or rectal bleeding, pancreatitis, anemia, thrombocytopenia, leukopenia, ecchymoses, agranulocytosis, pancytopenia, weight gain, weight loss, weakness, malaise, symptoms of upper respiratory tract infection, pruritus, urticaria, photosensitivity, pseudoporphyria, exfoliative dermatitis, erythema multiforme, Stevens-Johnson syndrome, toxic epidermal necrolysis (Lyell's syndrome), blurred vision, conjunctivitis, acute interstitial nephritis, hematuria, renal insufficiency, acute renal failure, decreased menstrual flow. **Causal relationship unknown:** The following adverse reactions occurred at an incidence of less than 1% in clinical trials, or were suggested from marketing experience, under circumstances where a causal relationship could not be definitely established. They are listed as alerting information for the physician: Palpitations, alteration in taste, sinusitis, pulmonary infections, alopecia, hearing decrease, increase in menstrual flow.

**DRUG ABUSE AND DEPENDENCE:** Daypro is a non-narcotic drug. Usually reliable animal studies have indicated that Daypro has no known addiction potential in humans.

**OVERDOSAGE:** No patient experienced either an accidental or intentional overdosage of Daypro in the clinical trials of the drug. Symptoms following acute overdose with other NSAIDs are usually limited to lethargy, drowsiness, nausea, vomiting, and epigastric pain and are generally reversible with supportive care. Gastrointestinal bleeding and coma have occurred following NSAID overdose. Hypertension, acute renal failure, and respiratory depression are rare. Patients should be managed by symptomatic and supportive care following an NSAID overdose. There are no specific antidotes. Gut decontamination may be indicated in patients seen within 4 hours of ingestion with symptoms or following a large overdose (5 to 10 times the usual dose). This should be accomplished via emesis and/or activated charcoal (60 to 100 g in adults, 1 to 2 g/kg in children) with an osmotic cathartic. Forced diuresis, alkalization of the urine, or hemoperfusion would probably not be useful due to the high degree of protein binding of oxaprozin.

See package insert for complete prescribing information.

2/13/97 • A97DA13180V-1

G.D. Searle & Co.  
Box 5110, Chicago, IL 60660 USA

Address medical inquiries to:  
G.D. Searle & Co.  
Healthcare Information Services  
5200 Old Orchard Road  
Skokie, IL 60077

**SEARLE**

©1997, G.D. Searle & Co.



New Edition for 1997-1998

# The Physician Statistics You Want, For The Market Direction You Need.

The new *Physician Characteristics and Distribution in the US, 1997-1998 Edition* is the most complete physician marketplace statistical reference available anywhere.

With the most current, accurate, detailed information on the characteristics and distribution of the country's 738,000 physicians at your fingertips, you can quickly pinpoint areas relatively underserved by physicians. Easily identify trends and patterns that will highlight future needs. Forecast future physician supply by specialty and locale. Accurately determine optimal areas for expansion or market emphasis. The applications are virtually unlimited!

## **One Resource. Many Uses.**

Nowhere else will you find a more comprehensive reference that can be used in so many different ways. Health care personnel planning. Policy development. Research studies. And much more. This powerful resource is one that you will turn to again and again.

## **New Information and Tables at User Request!**

The latest edition also features federal and non-federal physician data by location, professional activity, specialty, race/ethnicity, gender, and more. Designed for easy reference, the five primary sections of *Physician Characteristics and Distribution* offer multiple perspectives on the entire US physician marketplace. Features seven all-new tables.

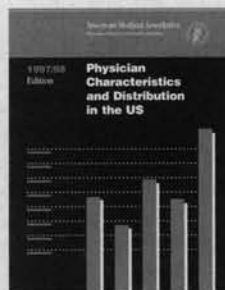
**Call Today! 800 621-8335**  
**Priority Code: AGF**

Visit the AMA web site at <http://www.ama-assn.org>

MasterCard, VISA, American Express, and Optima accepted.  
State sales tax and shipping/handling charges apply.

## **New Edition! New Data! New Tables!** **Physician Characteristics and Distribution in the US, 1997-1998 Edition**

Softbound, 350 pages, 70 summary and detail tables  
Published October 1997  
Order #: OP390297AGF  
AMA member price: \$99.95  
Nonmember price: \$125.95



**Satisfaction Guaranteed.**  
**Return within 30 days if not satisfied.**

American Medical Association  
Physicians dedicated to the health of America



**150** Years of Caring for the Country  
1847 • 1997



## Instant Answers.



Sometimes you just need to know *now*. And thanks to the new *Archives of Family Medicine* World Wide Web site, *now* is just a click away.

Locating practical clinical information has never been easier. Or faster. Pinpoint current and past *Archives*

articles, access informative summaries and abstracts, review full tables of contents, and more.

Whether you need instant information or want to make better use of your printed journal,

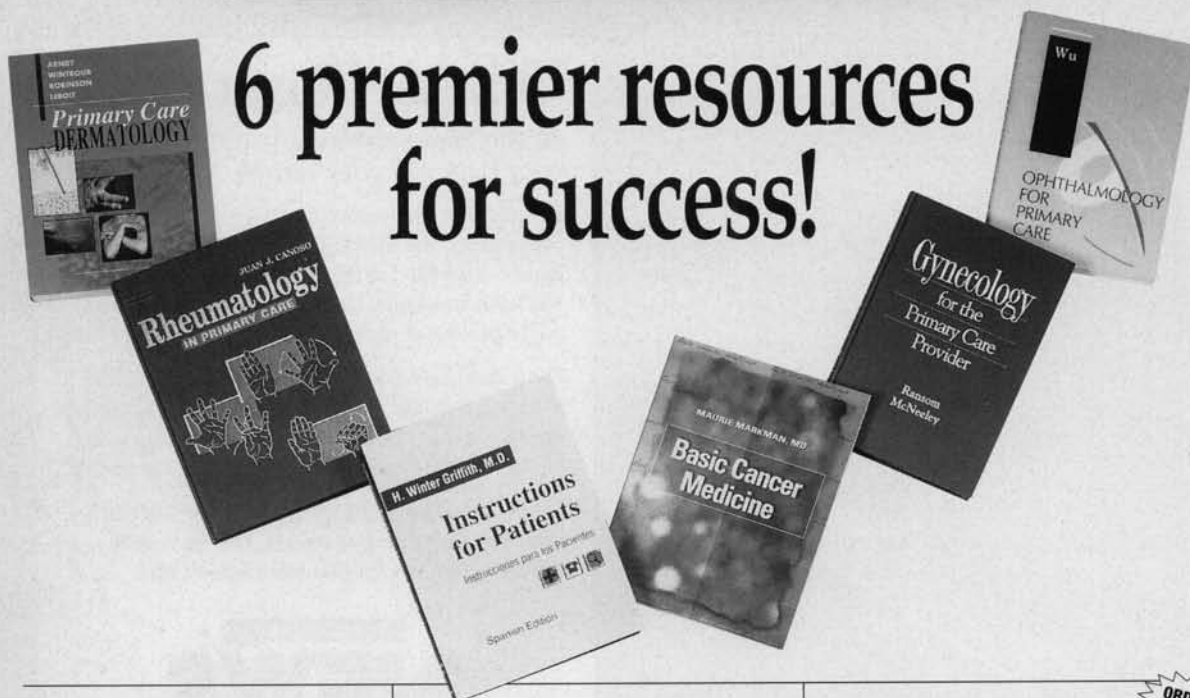
you'll find our Website just what you ordered.

<http://www.ama-assn.org>

CLICK ON ARCHIVES JOURNALS TODAY

NEW from W.B. SAUNDERS COMPANY!

# 6 premier resources for success!



## PRIMARY CARE DERMATOLOGY

64 highly acclaimed specialists guide you, step-by-step, to the accurate diagnosis and effective treatment of commonly encountered skin disorders. Abundantly illustrated!

Edited by Kenneth A. Arndt, MD, Bruce U. Wintroub, MD, June K. Robinson, MD, and Philip E. LeBoit, MD; with 57 contributors. July 1997. 335 pp. 234 illus. (125 full-color plates). Soft cover. \$49.95. Order #W6096-7.

## RHEUMATOLOGY IN PRIMARY CARE

Provides the guidelines you need to take a history, conduct a physical examination, order laboratory investigations and imaging procedures, and prescribe treatment for rheumatic disorders.

By Juan J. Canoso, MD, FACP. Feb. 1997. 382 pp. 137 figs., 133 tables. \$45.00. Order #W6080-0.

## INSTRUCTIONS FOR PATIENTS: Spanish Version

*"Succinct and written in a style the patient can readily comprehend."* (The Jnl. of the Amer. Board of Family Prac., rev. of 5th Ed. of English Version) Improve communications with your Spanish-speaking patients by photocopying and personalizing these handy guidelines.

By the late H. Winter Griffith, MD. July 1997. 566 pp. Illustd. Soft cover, 3-hole punched and perforated. \$49.95. Order #W6997-2.

## BASIC CANCER MEDICINE

Here's fast, convenient access to essential guidance on cancer management. Four sections address fundamental cancer topics, individual types of cancer, newer management approaches, and frequently used cancer drugs.

By Maurie Markman, MD. June 1997. 147 pp. Soft cover. \$35.00. Order #W5824-5.

## GYNECOLOGY FOR THE PRIMARY CARE PROVIDER

This practical resource offers in-depth guidance for diagnosing, treating, and managing a full range of common gynecologic problems — from contraception and amenorrhea...to menopause, and much more.

Edited by Scott Ransom, DO, FACOG, FACS, CHE, and S. Gene McNeely, MD, FACOG. With 22 contributors. Mar. 1997. 304 pp. 77 tables, 49 figs. \$45.00. Order #W6433-4.

## OPHTHALMOLOGY FOR PRIMARY CARE

Here's expert guidance for evaluating and managing common eye disorders, diseases, and injuries. Each chapter examines anatomy • epidemiology • signs and symptoms • examination techniques • management • referral • and more!

By Gloria Wu, MD. July 1997. 216 pp. 260 illus. (73 full-color plates). Soft cover. \$35.00. Order #W5078-3.

Call W.B. Saunders Company toll-free  
**1-800-545-2522**  
(8:30-7:00 Eastern Time) to order!  
Be sure to mention DM#41856.  
Or mail coupon to address below.

ORDER TODAY!

**YES!** Please rush my copy of the book(s) checked below. If not completely satisfied, I may return the book(s) with the invoice within 30 days at no further obligation.

- W6096-7 Arndt et al. \$49.95
- W6080-0 Canoso \$45.00
- W6997-2 Griffith \$49.95
- W5824-5 Markman \$35.00
- W6433-4 Ransom & McNeely \$45.00
- W5078-3 Wu \$35.00

**Also send:**

- W2859-1 Dorland's Illustrated Medical Dictionary, 28th Edition \$43.00.
- Bill me later  Check enclosed  VISA
- MC  AmEx

Card # \_\_\_\_\_ / \_\_\_\_\_ / \_\_\_\_\_

Exp. \_\_\_ / \_\_\_ / \_\_\_

Add the applicable sales tax for your area. Prepaid orders save shipping. Make checks payable to W.B. SAUNDERS COMPANY. Staple this to your purchase order to expedite delivery.

Name \_\_\_\_\_

Address \_\_\_\_\_

City \_\_\_\_\_

State \_\_\_\_\_

Zip \_\_\_\_\_

Telephone (\_\_\_\_) \_\_\_\_\_

©W.B. SAUNDERS COMPANY 1997. Professional references may be tax-deductible. Offer valid in USA only. Prices subject to change without notice. ArchFM /97 DM#41856

**W.B. SAUNDERS COMPANY**  
A Division of Harcourt Brace & Company  
Order Fulfillment Department  
6277 Sea Harbor Drive, Orlando, Florida 32887-4430



## Take A Closer Look

At the issues affecting your practice, your patients, your future.

Events and trends that directly influence your practice, your patients, and ultimately your future are unfolding rapidly — the effort to restructure Medicare and Medicaid, for example, and the effect of managed care on the practice of medicine in your region and specialty.

Every week, *American Medical News* takes a closer look at these and similar issues, and reports them in a concise, organized fashion. We make it easy for physicians to stay informed of the daily events that greatly affect their world.

Take a closer look at *American Medical News* and the issues that influence your success. Give us a call at 800-AMA-2350 to order your subscription today!

American Medical

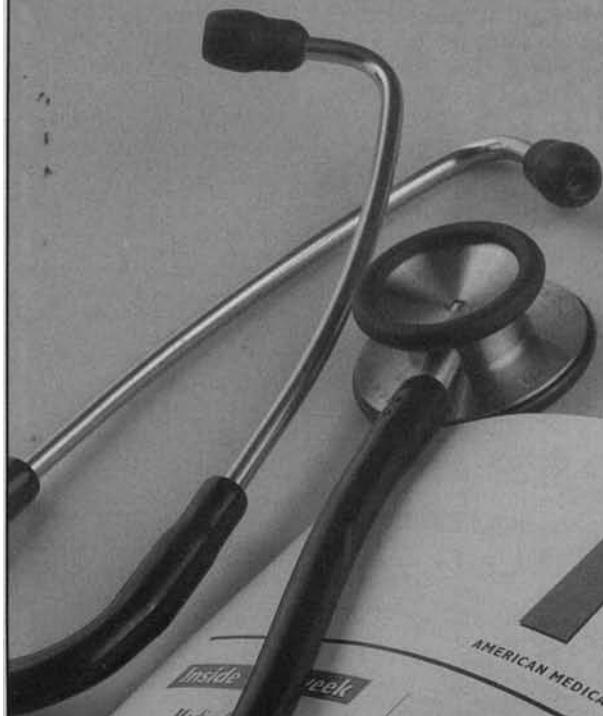
# NEWS

<http://www.ama-assn.org>

P7FA2

American Medical Association

Physicians dedicated to the health of America



# American Medical NEWS

AMERICAN MEDICAL ASSOCIATION • FEBRUARY 12, 1996 • VOLUME 39 • NUMBER 6

## Gatekeepers on trial

By Linda O. Prager  
AMNEWS STAFF

When Martha Brumbaugh, MD, referred Carey Dunn to a urologist after diagnosing a recurrence of erythema nodosum that was the last she heard from him for a year and a half, she was the last she heard from him for a year and a half. The urologist he'd chosen through his health plan, he was dying of a still undiagnosed cancer.

The urologist's earlier test results indicated a mass, but the specialist reports ever reached Dr. Brumbaugh. The lawsuit that followed Dunn's death claimed not only medical malpractice by several physicians, including Dr. Brumbaugh, but breach of contract by her and the Health Care Plan of New Jersey. The plan had assumed responsibility for coordinating the member's total health care, including primary care physicians and specialists. All claims against Dr. Brumbaugh and the health plan were dismissed by the court, the \$2.9 million jury award was against one urology group.

Yet managed care gatekeepers take heed. This case is only one of an emerging number of lawsuits that show heightened liability risks for primary care physicians participating in managed care, say attorneys and physician liability insurers. And they're rapidly changing the courtroom climate.

"There's a real sense that we've entered a new decade. The claims have a different character," says Paul R. Frisch, director of medical-legal affairs for the American Medical Association. "The delivery of primary care is going to be the area where risk is most likely to rise."

**Shifts in responsibility, liability**

Already, Frisch and other liability experts say claims against primary care physicians are on the upswing and the causes of action are changing. Physicians who serve as early case reviewers for insurers are reporting increasing numbers of claims. Large losses against GATEKEEPERS, the

## Putting the brakes on physicians

Study seeks freeze in spots, residency cuts

and Mike Mitka

force study on physician through

Spurring the concern that many groups with physician supervisors the profession rate

**Physician**

**Practice**

**Management**

**Companies**

Physician practice management companies are becoming an appealing option for a growing number of practitioners.

But there are both advantages and challenges you should be aware of before you sign with a practice management company.

**Get the expert view from the American Medical Association.**

*Physician Practice Management Companies: What You Need to Know* helps explain all facets of this burgeoning new practice management environment alternative.

Written by experts with experience working with both physicians and management groups, *Physician Practice Management Companies* gives you unbiased, up-to-date, and essential information:

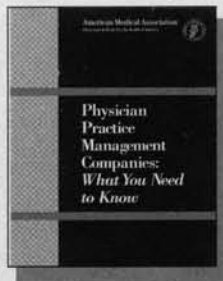
- how to evaluate whether affiliation is right for your practice
- a historical view of the practice management company industry, and a look to the future
- a close look at the pros and cons of affiliation
- how to identify candidates for affiliation
- a step-by-step guide of the transaction process
- insight into how Wall Street views these firms

*Physician Practice Management Companies* gives you the information you need to make an informed decision.

**Order today—without risk!  
Call 800 621-8335.**

Priority Code ADT  
Order #: OP316696ADT  
AMA member price: \$29.95  
Nonmember price: \$39.95

Mastercard, VISA, American Express, and Optima accepted. State sales taxes and shipping/handling charges apply.



If for any reason you are not pleased with your purchase after 30 days, simply return the book for a prompt and courteous refund.

Visit the AMA on-line at <http://www.ama-assn.org>.

**American Medical Association**

Physicians dedicated to the health of America



# A Good Fit?

*150* Years of Caring for the Country  
1847 • 1997



# AMA Health Insight

## A Web Site You and Your Patients Can Use

<http://www.ama-assn.org>

### A trusted source for quality medical information

In today's evolving health care environment, patients want to be as informed as possible about their own, and their family's, medical care.


*AMA Health Insight*, the consumer branch of the award-winning American Medical Association (AMA) web site, provides an invaluable public service by offering immediate, up-to-date medical information for you and your patients that meets the AMA's standards of quality and excellence.

### What can you find on *AMA Health Insight*?

- Patients can improve their own health and nutrition by linking to the interactive modules in "Your Health." Create an ongoing personal/family health history; have a fun and informative visit to the "Human Atlas" to discover facts about the human body; and locate everything from first-aid tips to healthy gourmet recipes from famous chefs.
- Health care professionals and the public can learn more about women's and adolescents' health issues. And discover the latest scientific and clinical advances on specific conditions like asthma and migraine with high-quality content produced by top authorities.

### Log on today to the AMA!

And put the power of medical knowledge and information at your fingertips.



AMA scientific news is spotlighted on Infoseek, the comprehensive web search engine. Seek and find at <http://www.infoseek.com>.

American Medical Association

Physicians dedicated to the health of America



150 Years of Caring for the Country  
1847 • 1997

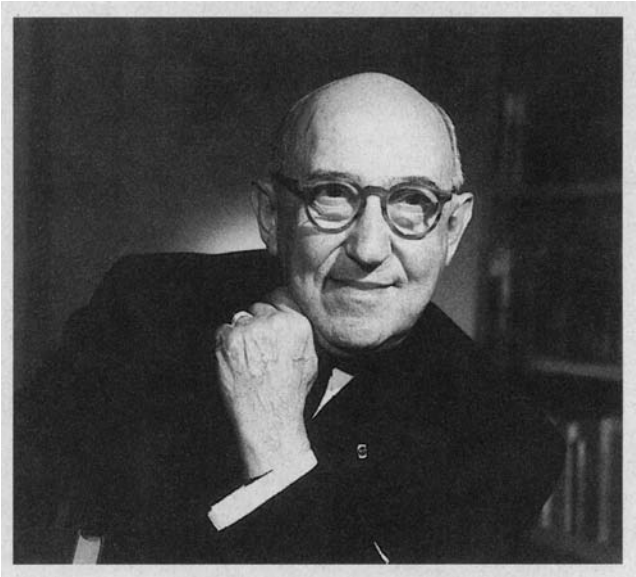


# Announcing

The American Medical Association

## Morris Fishbein Fellowship

July 1, 1998, through  
June 30, 1999



Applications are now being taken for the Morris Fishbein Fellowship in Medical Editing sponsored by the American Medical Association. Physicians interested in making a substantial commitment to medical editing are invited to apply for this full-time, one-year fellowship program.

### Work With JAMA

The successful candidate will work with the editorial and production staff of *The Journal of the American Medical Association* in all facets of editing and publishing a major weekly journal. At the completion of the program, it is expected that the candidate will be proficient in manuscript review and selection, issue makeup, copy editing and styling, art and layout of articles, and issue planning and managing, in addition to the many other elements of journal publication. He/she will also become familiar with electronic publishing.

### Editing and Writing

The candidate must have proven writing ability at the time of application, since he/she will be required during the course of the year to prepare articles for publication. Although the fellow will work under the supervision of a physician-editor, ability to work independently is a must.

### Stipend

A stipend of \$40,000 will be provided to the successful candidate to cover the one-year period.

### Application Forms

For an application form, please write to Richard M. Glass, MD, Deputy Editor, The Journal of the American Medical Association, 515 N State St, Chicago, IL 60610 (or Fax: 312 464-5824)

### Deadline for Applying

Completed applications should be forwarded as soon as possible and must be received no later than December 19, 1997.

American Medical Association

Physicians dedicated to the health of America





# Treasure. Map.



Introducing the full text and graphics of JAMA & Archives Journals on CD-ROM. Mine a wealth of medical information from 10 of the world's most respected journals right on your computer.

- Complete content including full text and graphics:
  - 1995 Archival Disk \$150
  - 1996 Archival Disk \$150
- Familiar, browsable format
- Search software by OVID Technologies, Inc.
- MEDLINE Reference Links and 5-Year Abstracts
- 5-Year JAMA & Archives Index
- Print/Save—print full text and graphics, save text as ASCII file
- Windows version

(Call for institutional and foreign rates)

To order by phone, call:

**1-800-AMA-2350**

Fax: 312-464-5831



P7HAA



## Statement of Ownership, Management, and Circulation

(Required by 39 USC 3685)

1. Publication Title Archives of Family Medicine	2. Publication Number 0 0 9 - 5 0 5	3. Filing Date 9/30/97
4. Issue Frequency Bi-monthly	5. Number of Issues Published Annually 6	6. Annual Subscription Price \$100.00
7. Complete Mailing Address of Known Office of Publication (Not printer) (Street, city, county, state, and ZIP+4) 515 N. State St., Chicago, Cook, IL 60610		Contact Person Paul R. Gasicki Telephone 312-464-2572
8. Complete Mailing Address of Headquarters or General Business Office of Publisher (Not printer) 515 N. State St., Chicago, Cook, IL 60610		
9. Full Names and Complete Mailing Addresses of Publisher, Editor, and Managing Editor (Do not leave blank) Publisher (Name and complete mailing address) American Medical Association, 515 N. State St., Chicago, IL 60610 Editor (Name and complete mailing address) Marjorie A. Bowman, MD, MPA, 515 N. State St., Chicago, IL 60610 Managing Editor (Name and complete mailing address) None		

10. Owner (Do not leave blank. If the publication is owned by a corporation, give the name and address of the corporation immediately followed by the names and addresses of all stockholders owning or holding 1 percent or more of the total amount of stock; if not owned by a corporation, give the names and addresses of the individual owners. If owned by a partnership or other unincorporated firm, give its name and address as well as those of each individual owner. If the publication is published by a nonprofit organization, give its name and address.)

Full Name	Complete Mailing Address
American Medical Association	515 N. State St., Chicago, IL 60610

11. Known Bondholders, Mortgagees, and Other Security Holders Owning or Holding 1 Percent or More of Total Amount of Bonds, Mortgages, or Other Securities. If none, check box  None

Full Name	Complete Mailing Address
None	

12. Tax Status (For completion by nonprofit organizations authorized to mail at special rates) (Check one)  
 The purpose, function, and nonprofit status of this organization and the exempt status for federal income tax purposes:  
 Has Not Changed During Preceding 12 Months  
 Has Changed During Preceding 12 Months (Publisher must submit explanation of change with this statement)

PS Form 3526, September 1985 (See Instructions on Reverse)

13. Publication Title Archives of Family Medicine	14. Issue Date for Circulation Data Below Sept/Oct. 97	
15. Extent and Nature of Circulation		
a. Total Number of Copies (Net press run)	Average No. Copies Each Issue During Preceding 12 Months 10/96 - 9/10/97 37124	Actual No. Copies of Single Issue Published Nearest to Filing Date 39651
b. Paid and/or Requested Circulation	(1) Sales Through Dealers and Carriers, Street Vendors, and Counter Sales (Not mailed) n/a	n/a
	(2) Paid or Requested Mail Subscriptions (Include advertiser's proof copies and exchange copies)	24831
c. Total Paid and/or Requested Circulation (Sum of 15b(1) and 15b(2))	24831	24705
d. Free Distribution by Mail (Samples, complimentary, and other free)	11114	13432
e. Free Distribution Outside the Mail (Carriers or other means)	0	0
f. Total Free Distribution (Sum of 15d and 15e)	11114	13432
g. Total Distribution (Sum of 15c and 15f)	35945	38137
h. Copies not Distributed	(1) Office Use, Leftovers, Spoiled 1179	1514
	(2) Returns from News Agents 0	0
i. Total (Sum of 15g, 15h(1), and 15h(2))	37124	39651
Percent Paid and/or Requested Circulation (15c / 15g x 100)	69%	65%

16. Publication of Statement of Ownership  
 Publication required. Will be printed in the 11-12/97 issue of this publication.  
 Publication not required.

17. Signature and Title of Editor, Publisher, Business Manager, or Owner  
 Peter Vogel, Associate Publisher  
 Date: 9-30-97

I certify that all information furnished on this form is true and complete. I understand that anyone who furnishes false or misleading information on this form or who omits material or information requested on the form may be subject to criminal sanctions (including fines and imprisonment) and/or civil sanctions (including multiple damages and civil penalties).

### Instructions to Publishers

1. Complete and file one copy of this form with your postmaster annually on or before October 1. Keep a copy of the completed form for your records.
2. In cases where the stockholder or security holder is a trustee, include in items 10 and 11 the name of the person or corporation for whom the trustee is acting. Also include the names and addresses of individuals who are stockholders who own or hold 1 percent or more of the total amount of bonds, mortgages, or other securities of the publishing corporation. In item 11, if none, check the box. Use blank sheets if more space is required.
3. Be sure to furnish all circulation information called for in item 15. Free circulation must be shown in items 15d, e, and f.
4. If the publication had second-class authorization as a general or requester publication, this Statement of Ownership, Management, and Circulation must be published; it must be printed in any issue in October or, if the publication is not published during October, the first issue printed after October.
5. In item 16, indicate the date of the issue in which this Statement of Ownership will be published.
6. Item 17 must be signed.

Failure to file or publish a statement of ownership may lead to suspension of second-class authorization.

PS Form 3526, September 1985 (Reverse)





# ONCE-A-DAY CARDIZEM® CD

(diltiazem HCl) 120-, 180-, 240-, 300-mg Capsules

Rx  
Cardizem CD  
Start with one  
180-mg  
capsule daily and titrate  
as necessary

Brief Summary of  
Prescribing Information as of December 1995A

## CARDIZEM® CD (diltiazem HCl) Capsules

### CONTRAINDICATIONS

CARDIZEM is contraindicated in (1) patients with sick sinus syndrome except in the presence of a functioning ventricular pacemaker, (2) patients with second- or third-degree AV block except in the presence of a functioning ventricular pacemaker, (3) patients with hypotension (less than 90 mm Hg systolic), (4) patients who have demonstrated hypersensitivity to the drug, and (5) patients with acute myocardial infarction and pulmonary congestion documented by x-ray on admission.

### WARNINGS

- 1. Cardiac Conduction.** CARDIZEM prolongs AV node refractory periods without significantly prolonging sinus node recovery time, except in patients with sick sinus syndrome. This effect may rarely result in abnormally slow heart rates (particularly in patients with sick sinus syndrome) or second- or third-degree AV block (13 of 3290 patients or 0.40%). Concomitant use of diltiazem with beta-blockers or digitalis may result in additive effects on cardiac conduction. A patient with Prinzmetal's angina developed periods of asystole (2 to 5 seconds) after a single dose of 60 mg of diltiazem. (See ADVERSE REACTIONS section.)
- 2. Congestive Heart Failure.** Although diltiazem has a negative inotropic effect in isolated animal tissue preparations, hemodynamic studies in humans with normal ventricular function have not shown a reduction in cardiac index nor consistent negative effects on contractility (dp/dt). An acute study of oral diltiazem in patients with impaired ventricular function (ejection fraction 24% ± 6%) showed improvement in indices of ventricular function without significant decrease in contractile function (dp/dt). Worsening of congestive heart failure has been reported in patients with preexisting impairment of ventricular function. Experience with the use of CARDIZEM (diltiazem hydrochloride) in combination with beta-blockers in patients with impaired ventricular function is limited. Caution should be exercised when using this combination.
- 3. Hypotension.** Decreases in blood pressure associated with CARDIZEM therapy may occasionally result in symptomatic hypotension.
- 4. Acute Hepatic Injury.** Mild elevations of transaminases with and without concomitant elevation in alkaline phosphatase and bilirubin have been observed in clinical studies. Such elevations were usually transient and frequently resolved even with continued diltiazem treatment. In rare instances, significant elevations in enzymes such as alkaline phosphatase, LDH, SGOT, SGPT, and other phenomena consistent with acute hepatic injury have been noted. These reactions tended to occur early after therapy initiation (1 to 8 weeks) and have been reversible upon discontinuation of drug therapy. The relationship to CARDIZEM is uncertain in some cases, but probable in some. (See PRECAUTIONS.)

### PRECAUTIONS

#### General

CARDIZEM (diltiazem hydrochloride) is extensively metabolized by the liver and excreted by the kidneys and in bile. As with any drug given over prolonged periods, laboratory parameters of renal and hepatic function should be monitored at regular intervals. The drug should be used with caution in patients with impaired renal or hepatic function. In subacute and chronic dog and rat studies designed to produce toxicity, high doses of diltiazem were associated with hepatic damage. In special subacute hepatic studies, oral doses of 125 mg/kg and higher in rats were associated with histological changes in the liver which were reversible when the drug was discontinued. In dogs, doses of 20 mg/kg were also associated with hepatic changes; however, these changes were reversible with continued dosing. Dermatologic events (see ADVERSE REACTIONS section) may be transient and may disappear despite continued use of CARDIZEM. However, skin eruptions progressing to erythema multiforme and/or exfoliative dermatitis have also been infrequently reported. Should a dermatologic reaction persist, the drug should be discontinued.

#### Drug Interactions

Due to the potential for additive effects, caution and careful titration are warranted in patients receiving CARDIZEM concomitantly with other agents known to affect cardiac contractility and/or conduction. (See WARNINGS.) Pharmacologic studies indicate that there may be additive effects in prolonging AV conduction when using beta-blockers or digitalis concomitantly with CARDIZEM. (See WARNINGS.) As with all drugs, care should be exercised when treating patients with multiple medications. CARDIZEM undergoes biotransformation by cytochrome P-450 mixed function oxidase. Coadministration of CARDIZEM with other agents which follow the same route of biotransformation may result in the competitive inhibition of metabolism. Especially in patients with renal and/or hepatic impairment, dosages of similarly metabolized drugs, particularly those of low therapeutic ratio, may require adjustment when starting or stopping concomitantly administered diltiazem to maintain optimum therapeutic blood levels. **Beta-blockers.** Controlled and uncontrolled domestic studies suggest that concomitant use of CARDIZEM and beta-blockers is usually well tolerated, but available data are not sufficient to predict the effects of concomitant treatment in patients with left ventricular dysfunction or cardiac conduction abnormalities. Administration of CARDIZEM (diltiazem hydrochloride) concomitantly with propranolol in five normal volunteers resulted in increased propranolol levels in all subjects and bioavailability of propranolol was increased approximately 50%. In vitro, propranolol appears to be displaced from its binding sites by diltiazem. If combination therapy is initiated or withdrawn in conjunction with propranolol, an adjustment in the propranolol dose may be warranted. (See WARNINGS.)

**Cimetidine.** A study in six healthy volunteers has shown a significant increase in peak diltiazem plasma levels (58%) and area-under-the-curve (53%) after a 1-week course of cimetidine at 1200 mg per day and a single dose of diltiazem 60 mg. Ranitidine produced smaller, nonsignificant increases. The effect may be mediated by cimetidine's known inhibition of hepatic cytochrome P-450, the enzyme system responsible for the first-pass metabolism of diltiazem. Patients currently receiving diltiazem therapy should be carefully monitored for a change in pharmacological effect when initiating and discontinuing therapy with cimetidine. An adjustment in the diltiazem dose may be warranted.

**Digoxin.** Administration of CARDIZEM with digoxin in 24 healthy male subjects increased plasma digoxin concentrations approximately 20%. Another investigator found no increase in digoxin levels in 12 patients with coronary artery disease. Since there have been conflicting results regarding the effect of digoxin levels, it is recommended that digoxin levels be monitored when initiating, adjusting, and discontinuing CARDIZEM therapy to avoid possible over- or under-digitalization. (See WARNINGS.)

**Anesthetics.** The depression of cardiac contractility, conductivity, and automaticity as well as the vascular dilation associated with anesthetics may be potentiated by calcium channel blockers. When used concomitantly, anesthetics and calcium blockers should be titrated carefully.

**Cyclosporine.** A pharmacokinetic interaction between diltiazem and cyclosporine has been observed during studies involving renal and cardiac transplant patients. In renal and cardiac transplant recipients, a reduction of cyclosporine dose ranging from 15% to 48% was necessary to maintain cyclosporine trough concentrations similar to those seen prior to the addition of diltiazem. If these agents are to be administered concurrently, cyclosporine concentrations should be monitored, especially when diltiazem therapy is initiated, adjusted, or discontinued. The effect of cyclosporine on diltiazem plasma concentrations has not been evaluated.

**Carbamazepine.** Concomitant administration of diltiazem with carbamazepine has been reported to result in elevated serum levels of carbamazepine (40% to 72% increase), resulting in toxicity in some cases. Patients receiving these drugs concurrently should be monitored for a potential drug interaction.

### Carcinogenesis, Mutagenesis, Impairment of Fertility

A 24-month study in rats at oral dosage levels of up to 100 mg/kg/day and a 21-month study in mice at oral dosage levels of up to 30 mg/kg/day showed no evidence of carcinogenicity. There was also no mutagenic response in vitro or in vivo in mammalian cell assays or in vitro in bacteria. No evidence of impaired fertility was observed in a study performed in male and female rats at oral dosages of up to 100 mg/kg/day.

### Pregnancy

Category C. Reproduction studies have been conducted in mice, rats, and rabbits. Administration of doses ranging from five to ten times greater (on a mg/kg basis) than the daily recommended therapeutic dose has resulted in embryo and fetal lethality. These doses, in some studies, have been reported to cause skeletal abnormalities. In the perinatal/postnatal studies, there was an increased incidence of stillbirths at doses of 20 times the human dose or greater. There are no well-controlled studies in pregnant women; therefore, use CARDIZEM in pregnant women only if the potential benefit justifies the potential risk to the fetus.

### Nursing Mothers

Diltiazem is excreted in human milk. One report suggests that concentrations in breast milk may approximate serum levels. If use of CARDIZEM is deemed essential, an alternative method of infant feeding should be instituted.

### Pediatric Use

Safety and effectiveness in pediatric patients have not been established.

### ADVERSE REACTIONS

Serious adverse reactions have been rare in studies carried out to date, but it should be recognized that patients with impaired ventricular function and cardiac conduction abnormalities have usually been excluded from these studies.

The following table presents the most common adverse reactions reported in placebo-controlled angina and hypertension trials in patients receiving CARDIZEM CD up to 360 mg with rates in placebo patients shown for comparison.

CARDIZEM CD Capsule Placebo-Controlled Angina and Hypertension Trials Combined		
Adverse Reactions	Cardizem CD (n=607)	Placebo (n=301)
Headache	5.4%	5.0%
Dizziness	3.0%	3.0%
Bradycardia	3.3%	1.3%
AV Block First Degree	3.3%	0.0%
Edema	2.6%	1.3%
ECG Abnormality	1.6%	2.3%
Asthenia	1.8%	1.7%

In clinical trials of CARDIZEM CD capsules, CARDIZEM tablets, and CARDIZEM SR capsules involving over 3200 patients, the most common events (ie, greater than 1%) were edema (4.6%), headache (4.6%), dizziness (3.5%), asthenia (2.6%), first-degree AV block (2.4%), bradycardia (1.7%), flushing (1.4%), nausea (1.4%), and rash (1.2%).

In addition, the following events were reported infrequently (less than 1%) in angina or hypertension trials:

**Cardiovascular:** Angina, arrhythmia, AV block (second- or third-degree), bundle branch block, congestive heart failure, ECG abnormalities, hypotension, palpitations, syncope, tachycardia, ventricular extrasystoles

**Nervous System:** Abnormal dreams, amnesia, depression, gait abnormality, hallucinations, insomnia, nervousness, paresthesia, personality change, somnolence, tinnitus, tremor

**Gastrointestinal:** Anorexia, constipation, diarrhea, dry mouth, dyspepsia, dyspepsia, mild elevations of SGOT, SGPT, LDH, and alkaline phosphatase (see hepatic warnings), thirst, vomiting, weight increase

**Dermatological:** Patechiae, photosensitivity, pruritus, urticaria

**Other:** Amblyopia, CPK increase, dyspnea, epistaxis, eye irritation, hyperglycemia, hyperuricemia, impotence, muscle cramps, nasal congestion, nocturia, osteoarthralgia, polyuria, sexual difficulties. The following postmarketing events have been reported infrequently in patients receiving CARDIZEM: allergic reactions, alopecia, angioedema (including facial or periorbital edema), asystole, erythema multiforme (including Stevens-Johnson syndrome, toxic epidermal necrolysis), exfoliative dermatitis, extrapyramidal symptoms, gingival hyperplasia, hemolytic anemia, increased bleeding time, leukopenia, purpura, retinopathy, and thrombocytopenia. In addition, events such as myocardial infarction have been observed which are not readily distinguishable from the natural history of the disease in these patients. A number of well-documented cases of generalized rash, some characterized as leukocytoclastic vasculitis, have been reported. However, a definitive cause and effect relationship between these events and CARDIZEM therapy is yet to be established.

Prescribing Information as of December 1995A

Hoechst Marion Roussel, Inc.  
Kansas City, MO 64137 USA

cddb1295Ac

## Hoechst Marion Roussel

Hoechst Marion Roussel, Inc. • Kansas City, MO 64134  
A member of the Hoechst Group

## Hoechst

References: 1. Massie BM, Der E, Herman TS, Topolski P, Park GD, Stewart WH. *Clin Cardiol.* 1992;15:365-368. 2. Data on file, Hoechst Marion Roussel. 3. Procordia XL® prescribing information. 4. Norvasc® prescribing information. 5. Sular® prescribing information.



# CARDIZEM<sup>®</sup> CD

(diltiazem HCl) 120-, 180-, 240-, 300-mg Capsules



**ONCE A DAY**

## In Hypertension

- In a randomized, double-blind study of 127 hypertensives, 86% of patients reaching goal of blood pressure on CARDIZEM CD were controlled at 240 mg or less.<sup>1</sup>

## In Angina

- CARDIZEM CD is effective as monotherapy and adds efficacy to beta-blocker and/or nitrate therapy.<sup>2\*</sup>

## Safety

- Unlike many short-acting and long-acting dihydropyridine products (nifedipine, amlodipine, nisoldipine), no warnings for increased incidence (rare) of myocardial infarction.<sup>3-5</sup>
- Most commonly reported side effects are headache (5.4%), bradycardia (3.3%), first-degree AV block (3.3%), dizziness (3.0%), edema (2.6%), asthenia (1.8%), and ECG abnormality (1.6%).

\* Experience with use of CARDIZEM in combination with beta-blockers in patients with impaired ventricular function is limited. Available data are not sufficient to predict the effects of concomitant treatment with CARDIZEM CD and beta-blockers in patients with left ventricular dysfunction or cardiac conduction abnormalities. Caution should be exercised when using this combination. (See Warnings and Precautions in prescribing information.)