

Supporting Information for

[2+2+2]-Cocyclotrimerization of 6-Alkynyl-7-benzylpurines with α,ω -Diyne

Stanislav Opekar, Pavel Turek, Radek Pohl, Blanka Klepetářová, Ivan Votruba, Michal Hocek,
and Martin Kotora

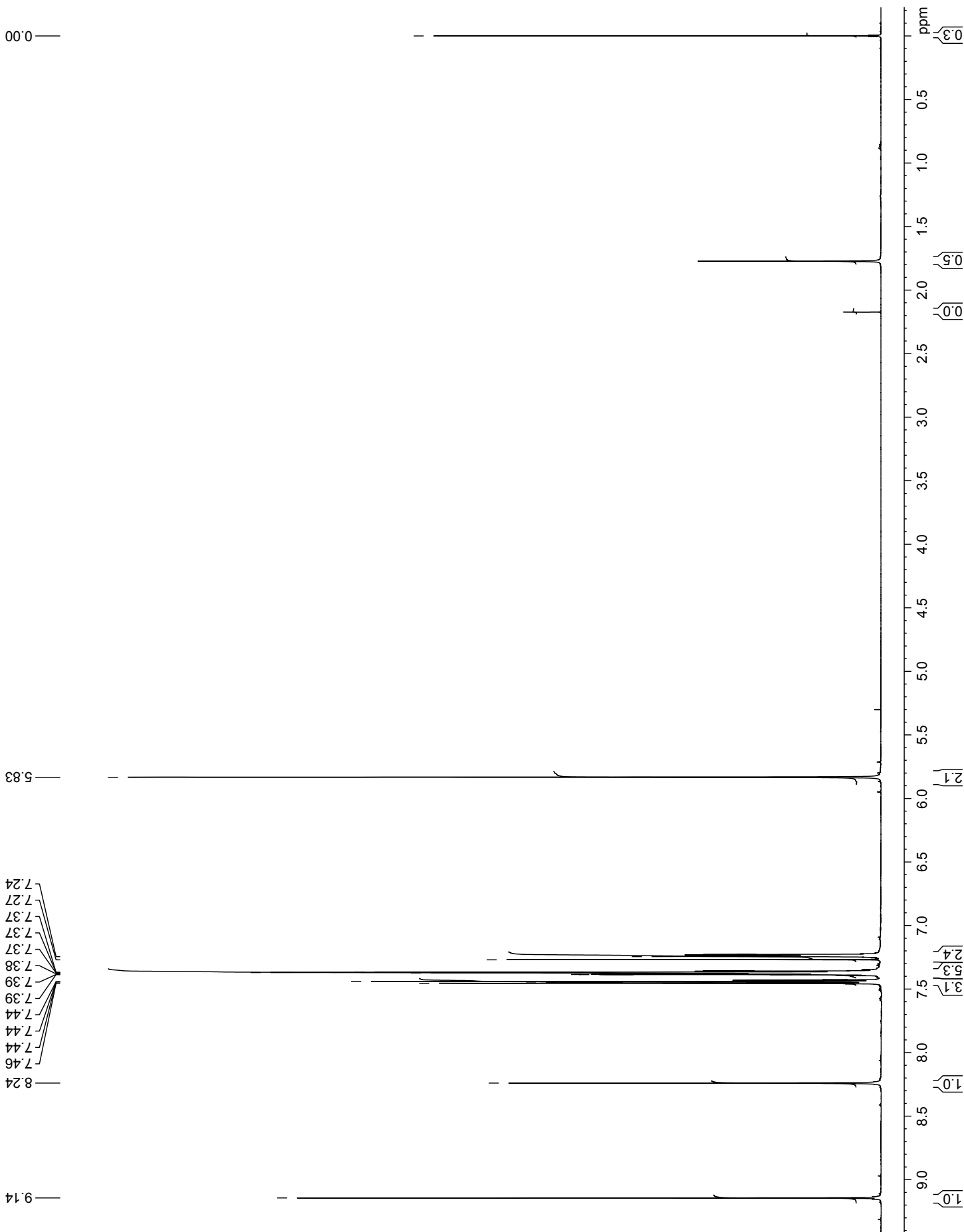
^1H and ^{13}C (apt) NMR spectra of the prepared compounds 4a-4c and 6aa-6cc

TUREK SO-15
1H NMR in CDCl3
11-01-07 RA

Current Data Parameters
NAME TUREK_SO-15
EXPNO 1
PROCNO 1

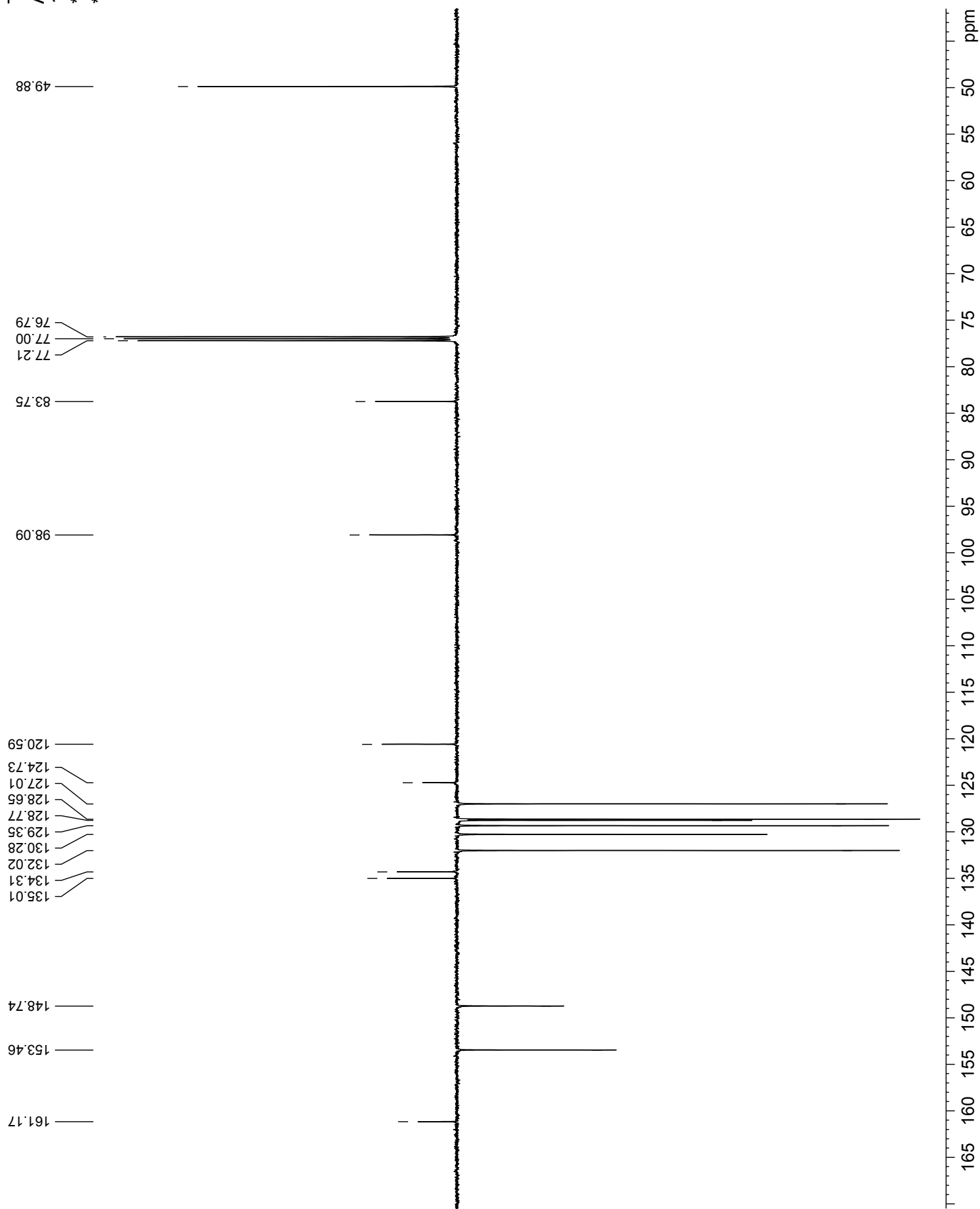
F2 - Acquisition Parameters
Date_ 20070111
Time 12.32
INSTRUM spect
PROBHD 5 mm CPTCI 1H-
PULPROG zg30
TD 72114
SOLVENT CDCl3
NS 32
DS 0
SWH 7211.539 Hz
ADRES 0.100002 Hz
RG 4.959242 sec
RQ 2.0
DVI 98.333 usec
DVE 50.00 usec
TE 300.0 K
D1 1.00000000 sec
TD0 1

==== CHANNEL f1 =====
NUC1 1H
P1 10.00 usec
PL1 8.10 dB
SFO1 600.1330006 MHz
F2 - Processing parameters
SI 131072
SF 600.1300056 MHz
WDW no
SSB 0
LB 0.00 Hz
GB 0
PC 40.00



TUREK SO-15
APT in CDCl3
11-01-07 RA

Current Data Parameters
NAME TUREK_SO-15
EXPNO 2
PROCNO 1
F2 - Acquisition Parameters
Date_ 20070111
Time 13.21
InstrUM spect
PROBHD 5 mm QNP1H-
PULPROG zgpg30
TD 75752
SOLVENT CDCl3
NS 944
DS 4
SWH 37878.789 Hz
FIDRES 0.500037 Hz
AQ 0.9989764 sec
RG 640
RG2 640
DE 13.200 usec
TE 300.0 K
CNST11 1.00000000
CNST12 160.00000000
D1 2.00000000 sec
d20 0.00625000 sec
DELTA 0.00001464 sec
TD0 1
===== CHANNEL f1 =====
NUC1 13C
P1 11.50 usec
PL1 23.00 dB
PL2 -1.40 dB
SFO1 150.9194083 MHz
===== CHANNEL f2 =====
CPDPRG2 waltz16
NUC2 1H
P2 80.00 usec
PL2 25.00 dB
PL3 7.00 dB
SFO2 600.1324005 MHz
F2 - Processing parameters
SI 131072
SF 150.9028166 MHz
WDW EM
SSB 0
LB 0
GB 0
PC 1.40



Compound 4a

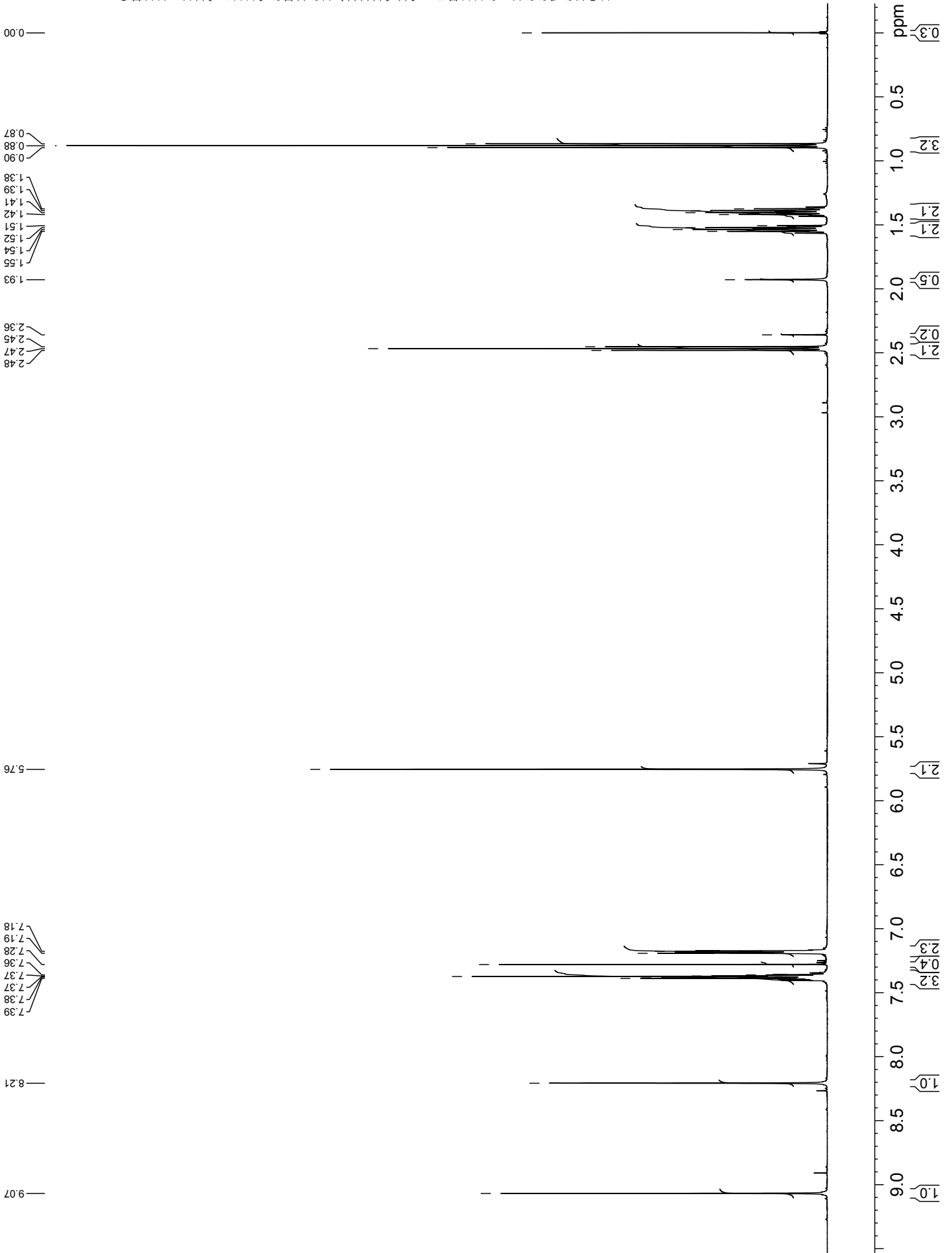
36310

TUREK PT-052
1H NMR in CDCl3
25-04-06 RA

Current Data Parameters
NAME TUREK_PT-052
EXPNO 1
PROCNO 1

F2 - Acquisition Parameters
Date_ 20060425
Time 7.36
INSTRUM spect
PROBHD 5 mm TXI 1H-13
PULPROG zg30
TD 65536
SOLVENT CDCl3
NS 32
DS 0
SWH 7002.801 Hz
FIDRES 0.106854 Hz
AQ 4.6793919 sec
RG 9
DW 71.400 usec
DE 6.00 usec
TE 285.1 K
D1 1.00000000 sec
TD0 1

==== CHANNEL f1 =====
NUC1 1H
P1 9.20 usec
PL1 1.00 dB
SFO1 500.1332508 MHz
F2 - Processing parameters
SI 131072
SF 500.1300038 MHz
WDW ho
SSB 0
LB 0.00 Hz
GB 0
PC 40.00



TUREK_PT-052
APT in CDCI3
25-04-06 RA

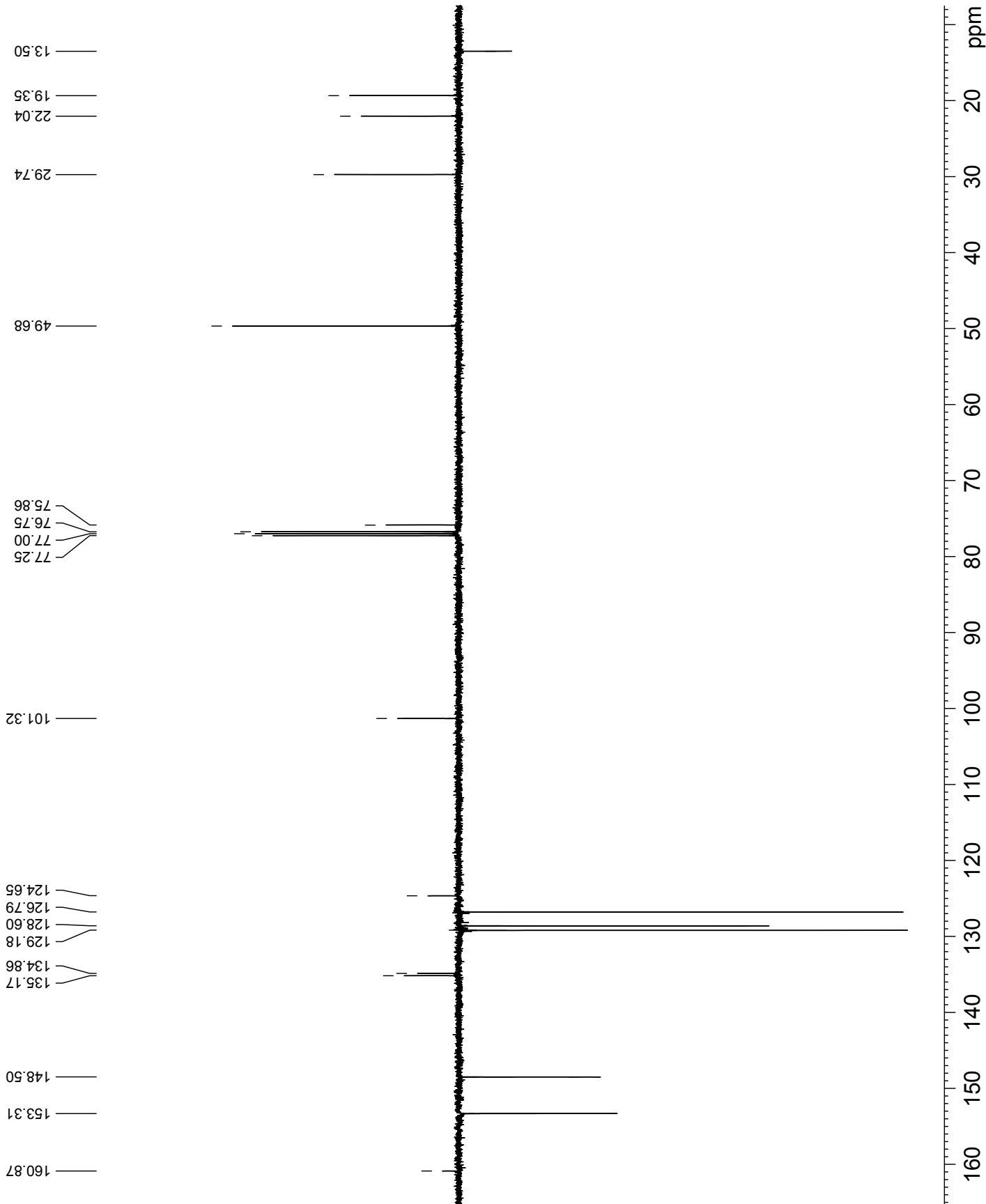
Current Data Parameters
NAME TUREK_PT-052
EXPNO 2
PROCNO 1

F2 - Acquisition Parameters
Date_ 20060425
Time 7.41
INSTRUM spect
PROBHD 5 mm TXI 1H-13
PULPROG gmod
TD 40318
SOLVENT CDCI3
NS 1252
DS 4
SWH 31446.541 Hz
FIDRES 0.773963 Hz
AQ 0.6411221 sec
RG 32768
DW 15.900 usec
DE 285.2 K
TE 160.000000
CNS11 1.0000000
D1 2.0000000 sec
d20 0.00625000 sec
DELTA 0.0001974 sec
TD0 1

==== CHANNEL f1 =====
NUC1 13C
P1 15.50 usec
PL 3.00 usec
FL1 17.20 dB
SFO1 125.7728799 MHz

==== CHANNEL f2 =====
CPDPRG2 waltz16
NUC2 1H
PCPD2 80.00 usec
PL2 1.00 dB
PL12 19.79 dB
SFO2 500.1320005 MHz

F2 - Processing parameters
SI 131072
SF 125.7578022 MHz
WDW EM
SSB 0
LB 1.00 Hz
GB 0
PC 1.00



34103

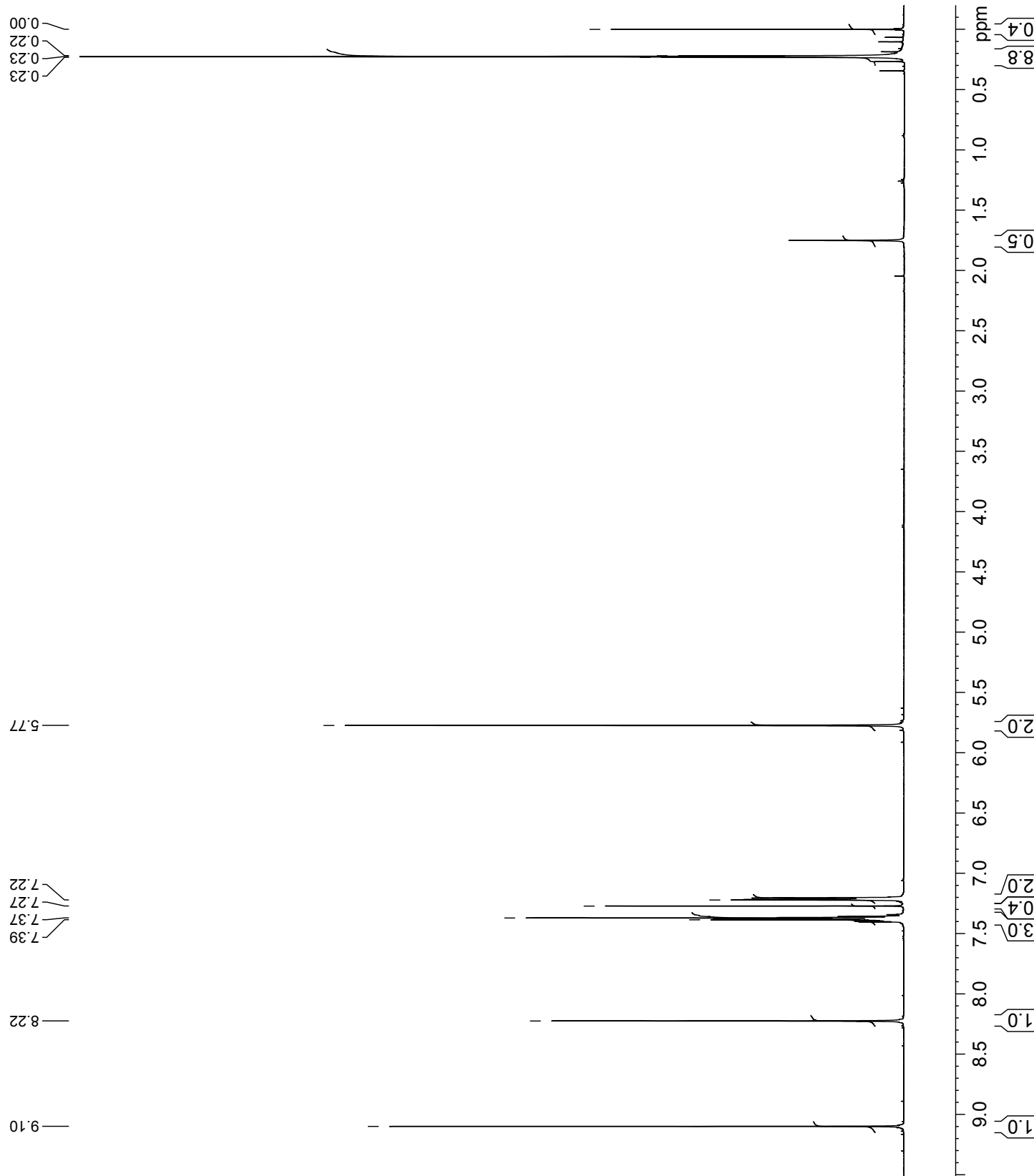
TUREK PT-054
 1H NMR in CDCl3
 25-04-06 RA

Current Data Parameters
 NAME TUREK_PT-054
 EXPNO 1
 PROCNO 1

F2 - Acquisition Parameters
 Date_ 20060425
 Time 9.25

INSTRUM spect
 PROBHD 5 mm TXI 1H-13
 PULPROG zg30
 TD 65536
 SOLVENT CDCl3
 NS 32
 DS 0
 SWH 7002.801 Hz
 FIDRES 0.106854 Hz
 AQ 4.6793919 sec
 RG 9
 DW 71.400 usec
 DE 6.00 usec
 TE 300.0 K
 D1 1.00000000 sec
 TD0 1

==== CHANNEL f1 =====
 NUJC1 1H
 P1 9.20 usec
 PL1 1.00 dB
 SFO1 500.1332508 MHz
 F2 - Processing parameters
 SI 131072
 SF 500.1300077 MHz
 WDW no
 SSB 0
 LB 0.00 Hz
 GB 0
 PC 40.00



34107

TUREK_PT-054
APT in CDCl3
25-04-06 RA

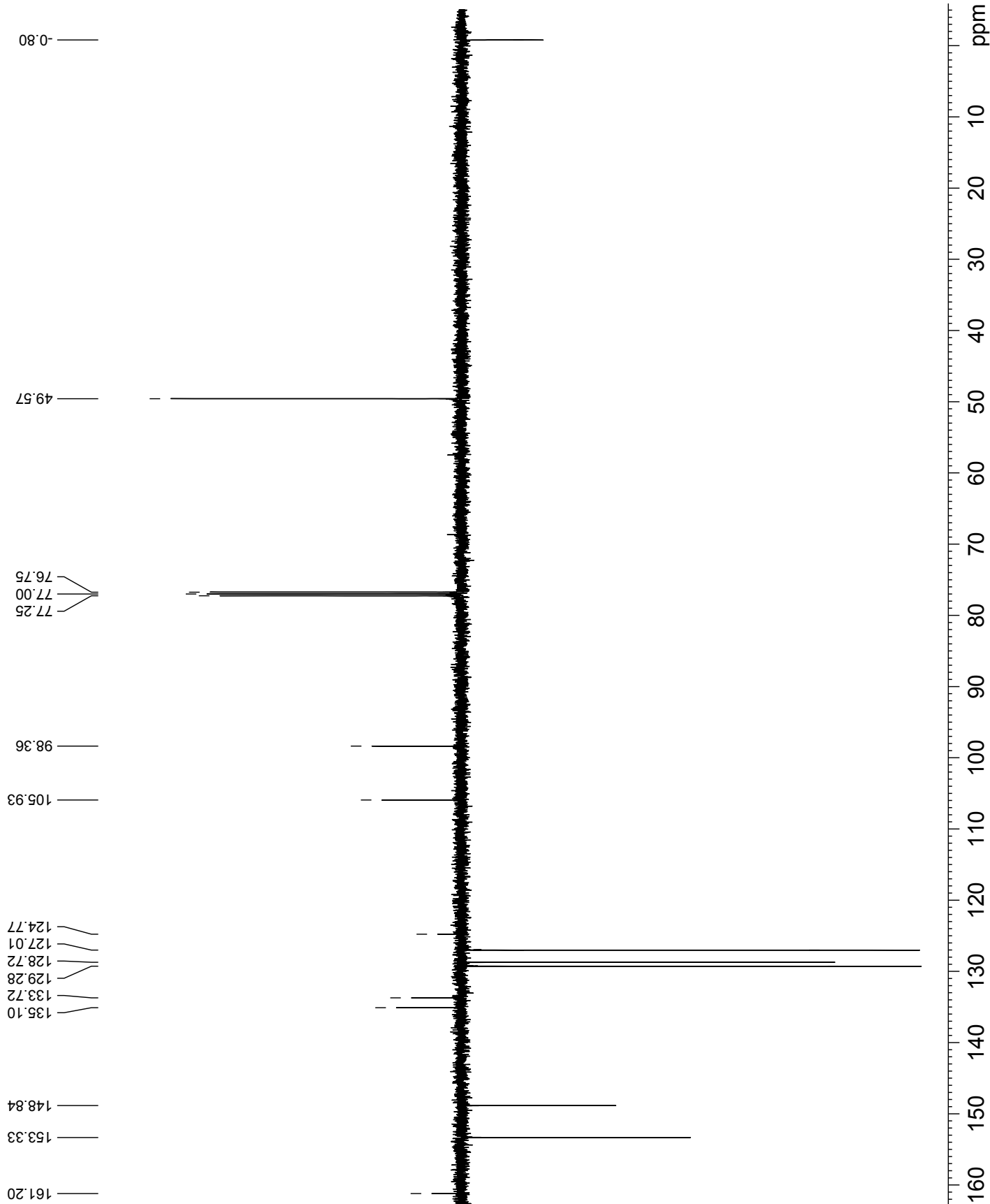
Current Data Parameters
NAME TUREK_PT-054
EXPNO 2
PROCNO 1

F2 - Acquisition Parameters
Date_ 20060425
Time 9.31
INSTRUM spect
PROBHD 5 mm TXI 1H-13
PULPROG gmod
TD 40318
SOLVENT CDCl3
NS 718
DS 4
SWH 31446.541 Hz
FIDRES 0.773963 Hz
AQ 0.6411221 sec
RG 32768
DW 15.900 usec
DE 6.000 usec
TE 300.0 K
CINST2 160.000000
CINST11 1.0000000
D1 2.00000000 sec
d20 0.00625000 sec
DELTA 0.00001974 sec
TD0 1

===== CHANNEL f1 =====
NUC1 13C
P1 15.50 usec
P2 3.00 usec
PL1 0.20 dB
SFO1 125.7728799 MHz

===== CHANNEL f2 =====
CPDPRG2 waltz16
NUC2 1H
PCPD2 80.00 usec
PL2 1.00 dB
PL12 19.79 dB
SFO2 500.1320005 MHz

F2 - Processing parameters
SI 131072
SF 125.7577945 MHz
WDW EM
SSB 0
LB 1.00 Hz
GB 0
PC 1.00



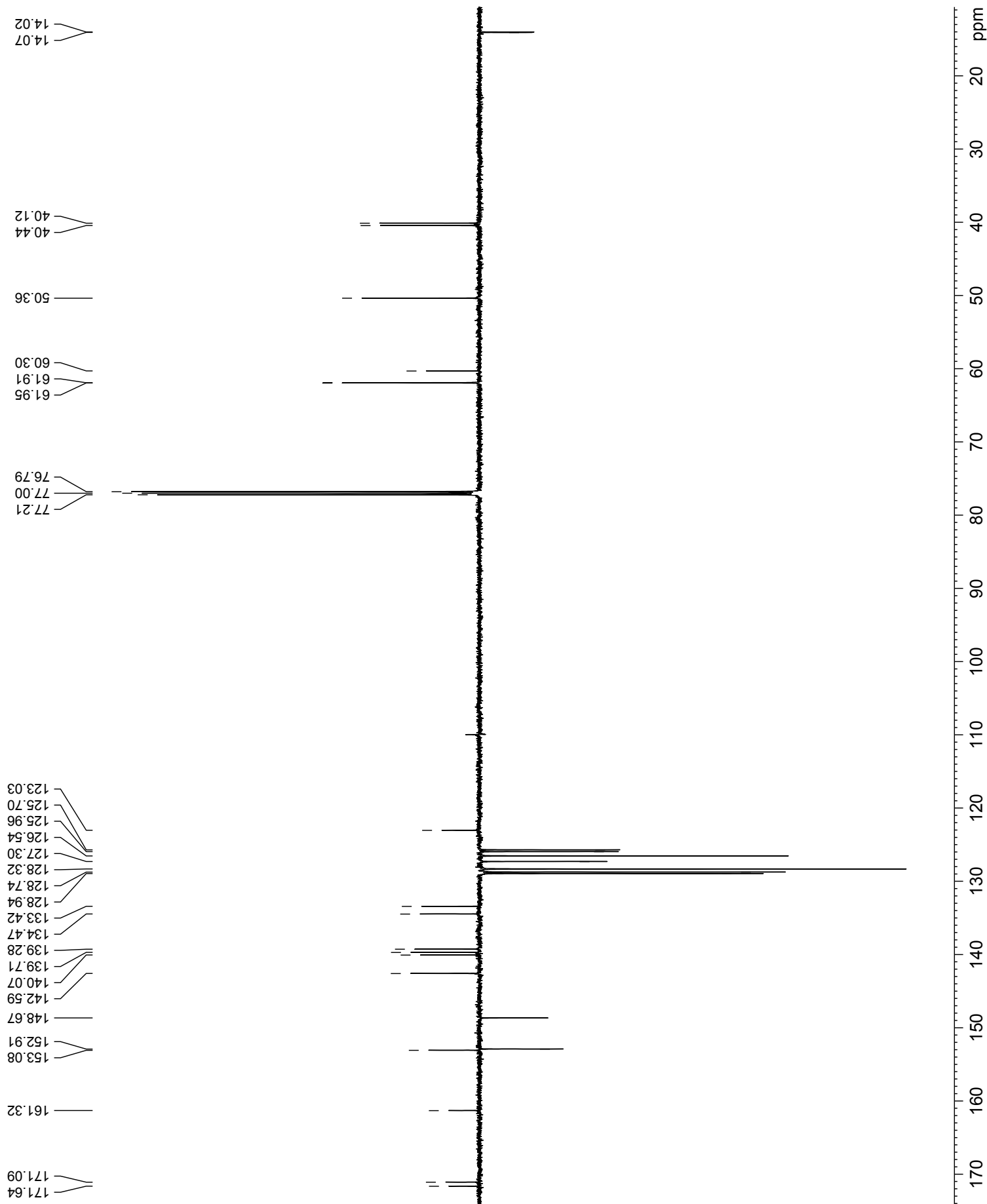
34107

TUREK SO-20
APT in CDCl3
24-04-07 RA

Compound 6aa

36483

Current Data Parameters
NAME TUREK_SO-20
EXPNO 2
PROCNO 1
F2 - Acquisition Parameters
Date_ 20070424
Time 8.12
InstrUM spect
PROBHD 5 mm CP1CI 1H-
PULPROG zgpg30
TD 75752
SOLVENT CDCl3
NS 477
DS 4
SWH 37878.789 Hz
FIDRES 0.500037 Hz
AQ 0.9989784 sec
RG 640
RG2 1320
RF 6.00 usec
DE 3.00 usec
TE 300.0 K
CNST11 1.00000000
CNST12 160.00000000
D1 2.00000000 sec
d20 0.00625000 sec
DELTA 0.00001464 sec
TD0 1
===== CHANNEL f1 =====
NUC1 13C
P1 11.50 usec
PL1 23.00 dB
PL2 -1.40 dB
SFO1 150.9194083 MHz
===== CHANNEL f2 =====
CPDPRG2 waltz16
NUC2 1H
P2 80.00 usec
PL2 25.00 dB
PL3 7.00 dB
SFO2 600.1324005 MHz
F2 - Processing parameters
SI 131072
SF 150.9028150 MHz
WDW EM
SSB 0
LB 0
GB 0
PC 1.40



TUREK SO-33
 1H NMR in CDCl3
 01-06-07 RA

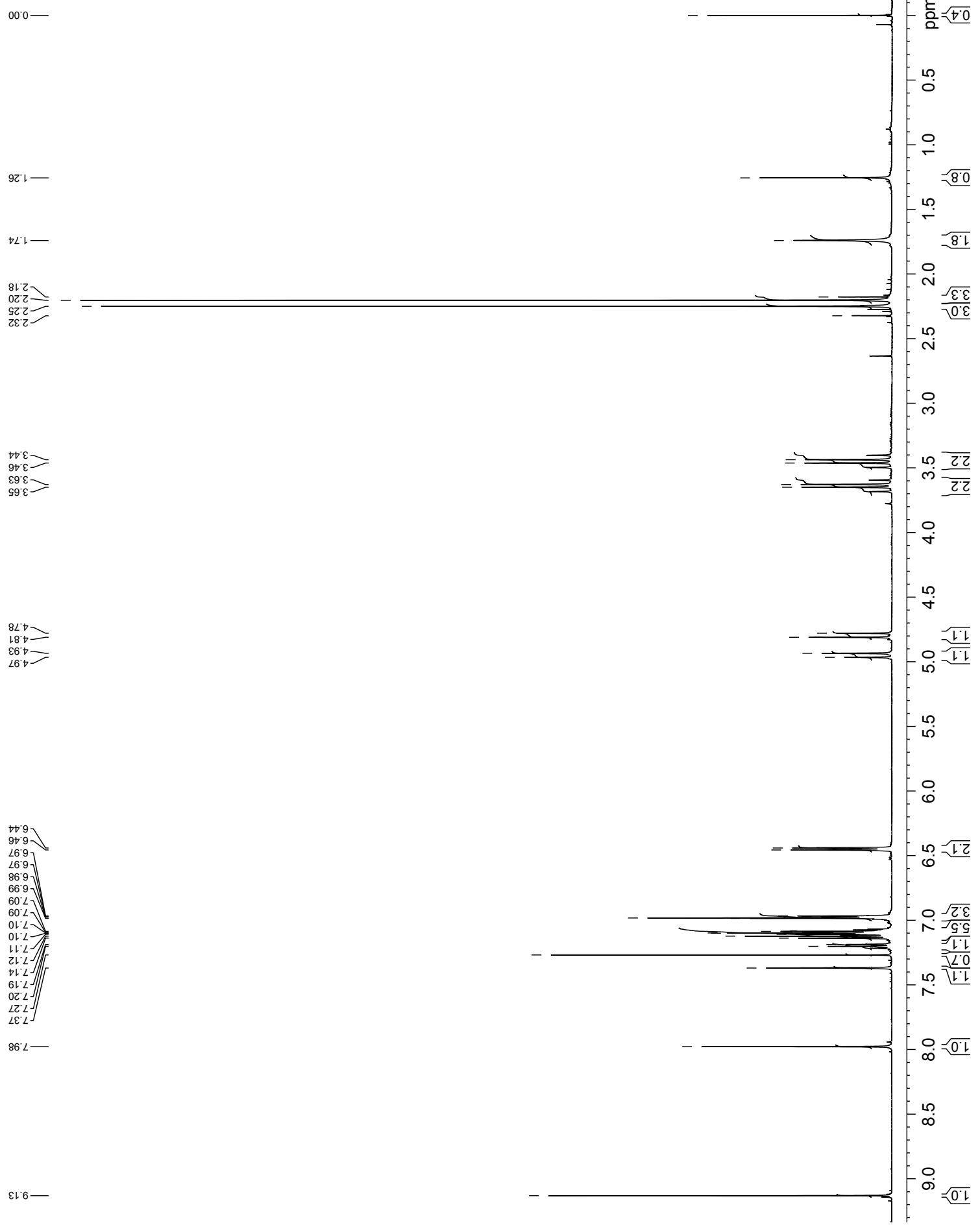
Current Data Parameters
 NAME TUREK_SO-33
 EXPNO 1
 PROCNO 1

F2 - Acquisition Parameters
 Date_ 20070601
 Time 9.38
 INSTRUM spect
 PROBHD 5 mm TXI 1H-13
 PULPROG zg30
 TD 60094
 SOLVENT CDCl3
 NS 32
 DS 0
 SWH 6009.615 Hz
 FIDRES 0.100004 Hz
 AQ 4.9999542 sec
 RG 28.5
 DW 83.200 usec
 DE 6.00 usec
 TE 300.0 K
 D1 1.00000000 sec
 TD0 1

==== CHANNEL f1 =====
 NUC1 1H
 P1 9.20 usec
 PL1 1.00 dB
 SFO1 499.9527497 MHz

F2 - Processing parameters
 SI 131072
 SF 499.9500042 MHz
 WDW ho
 SSB 0
 LB 0.00 Hz
 GB 0
 PC 40.00

Compound 6ab



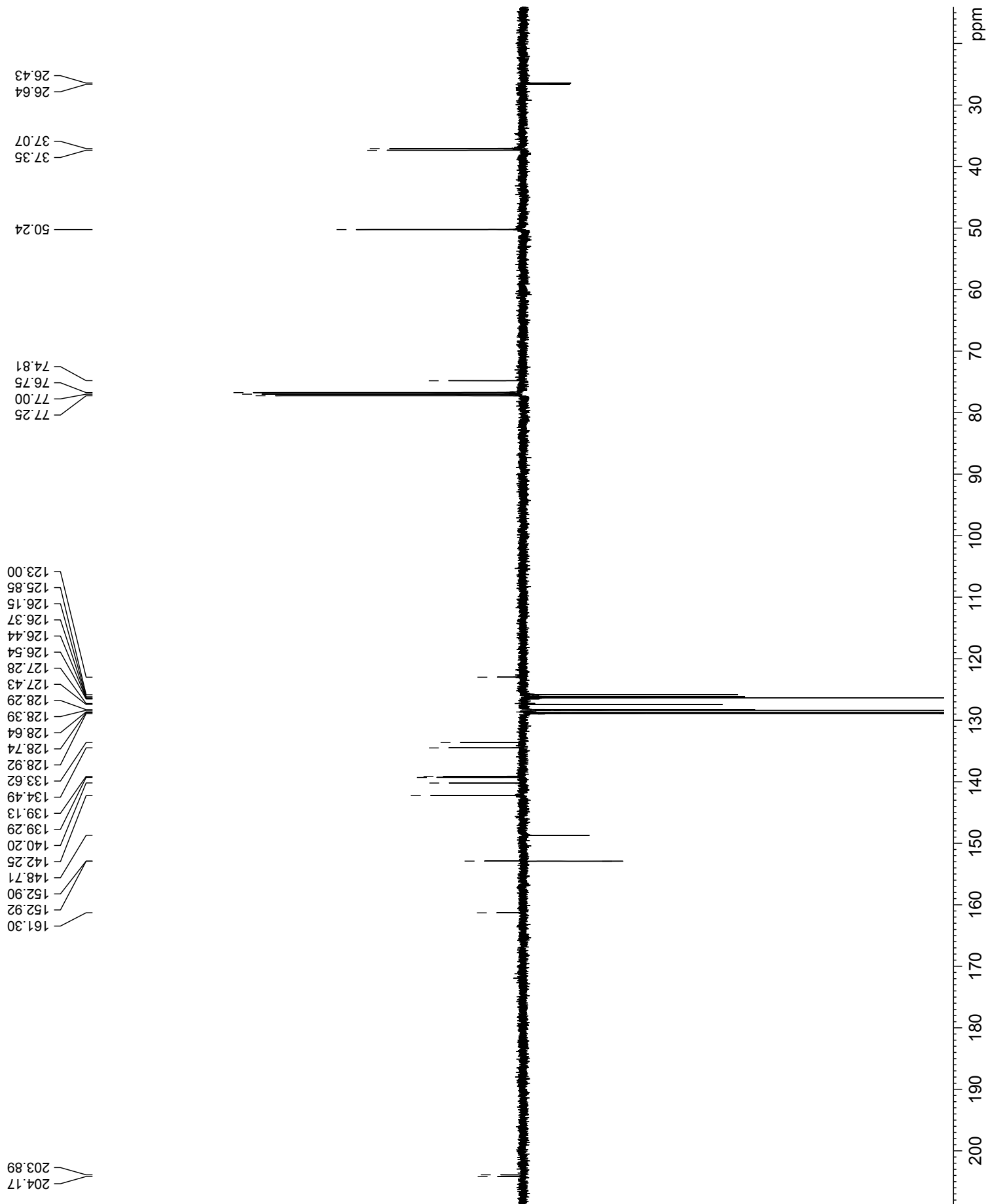
TUREK SO-33
APT in CDCl3
01-06-07 RA

Current Data Parameters
NAME TUREK_SO-33
EXPNO 2
PROCNO 1

F2 - Acquisition Parameters
Date_ 20070601
Time 10:21
INSTRUM spect
PROBHD 5 mm TXI 1H-13
PULPROG jmod
TD 50120
SOLVENT CDCl3
NS 984
DS 4
SWH 30303.031 Hz
FIDRES 0.604610 Hz
AQ 0.8270465 sec
RG 32768
DW 16.500 usec
DE 6.00 usec
TE 300.0 K
CNST11 1.0000000
CNST2 160.0000000
D1 2.0000000 sec
d20 0.00625000 sec
DELTA 0.00001910 sec
TD0 1

==== CHANNEL f1 =====
NUC1 13C
P1 15.00 usec
P2 30.00 usec
PL1 -0.80 dB
SFO1 125.7242110 MHz

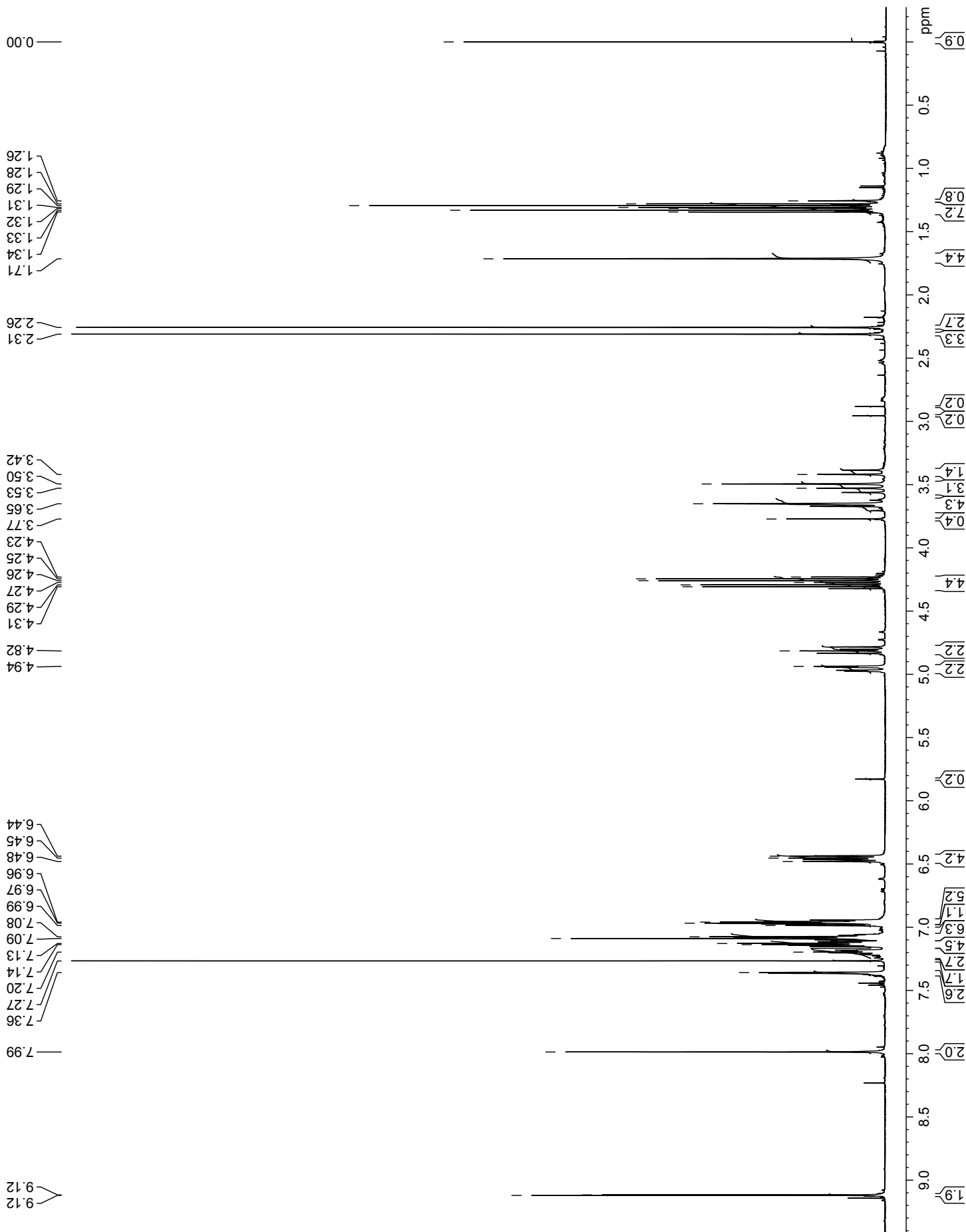
==== CHANNEL f2 =====
CFDPRG2 waltz16
NUC2 1H
PCPD2 80.00 usec
PL12 19.79 dB
PL2 1.00 dB
SFO2 499.9520000 MHz
F2 - Processing parameters
SI 262744
SF 125.7125324 MHz
WDW 0
SSB 0
LB 1.00 Hz
GB 0
PC 1.40



36481

TUREK SO-23
 1H NMR in CDCl3
 05-06-07 RA

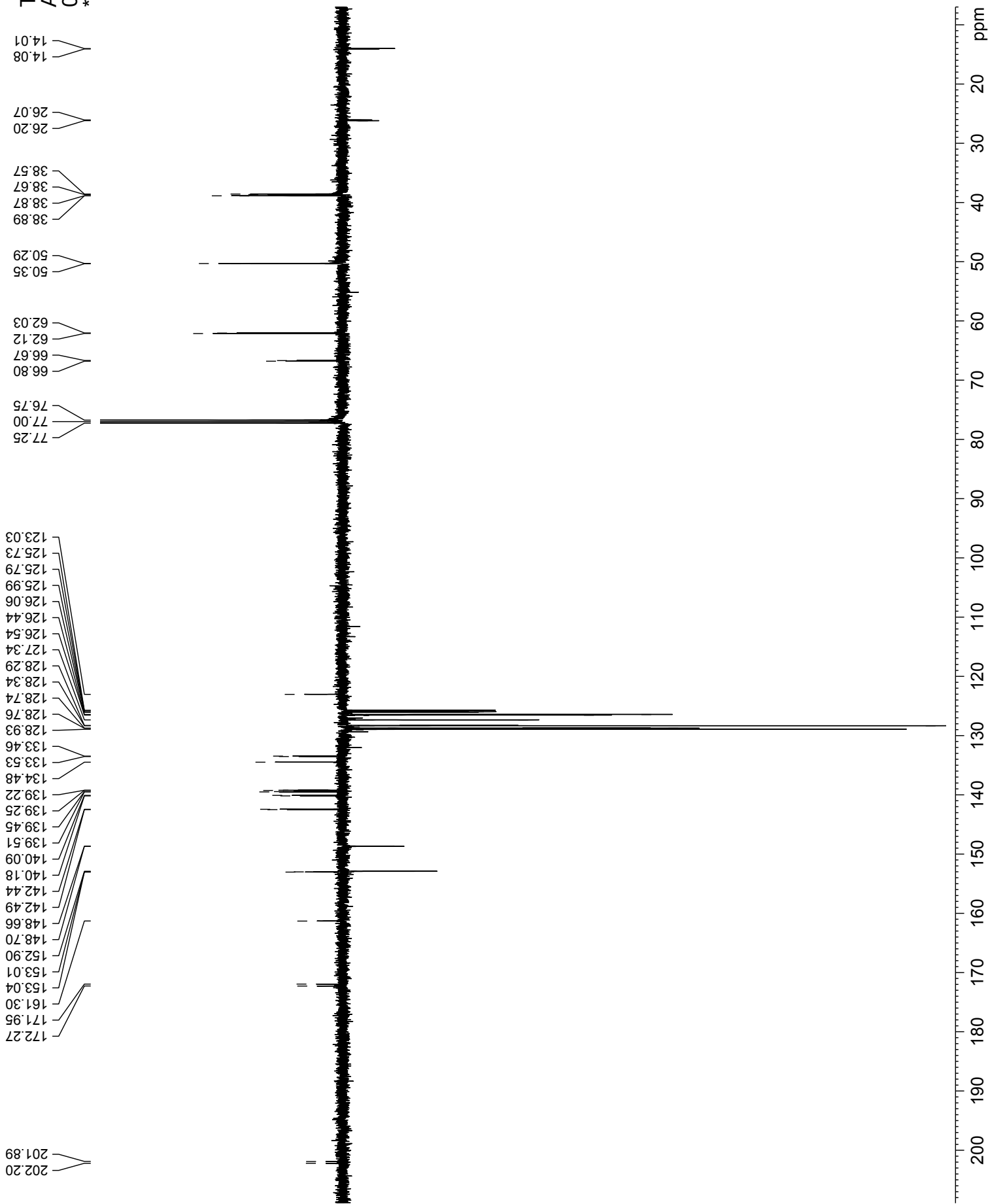
Current Data Parameters
 NAME TUREK_SO-23
 EXPNO 1
 PROCNO 1
 F2 - Acquisition Parameters
 Date_ 20070605
 Time 14.47
 INSTRUM spect
 PROBHD 5 mm TXI1H-13
 PULPROG zg30
 TD 60094
 SOLVENT CDCl3
 NS 32
 DS 0
 SWH 6009.615 Hz
 FIDRES 0.100004 Hz
 AQ 4.9998708 sec
 RG 28.5
 DW 83.200 usec
 DE 6.00 usec
 TE 300.0 K
 D1 1.00000000 sec
 TDO 1
 ===== CHANNEL f1 =====
 NUC1 1H
 P1 9.20 usec
 PL1 1.00 dB
 SFO1 499.9527497 MHz
 F2 - Processing parameters
 SI 131072
 SF 499.9500051 MHz
 WDW no
 SSB 0
 LB 0
 GB 0
 PC 45.00



36492

TUREK SO-23
APT in CDCl3
05-06-07 RA

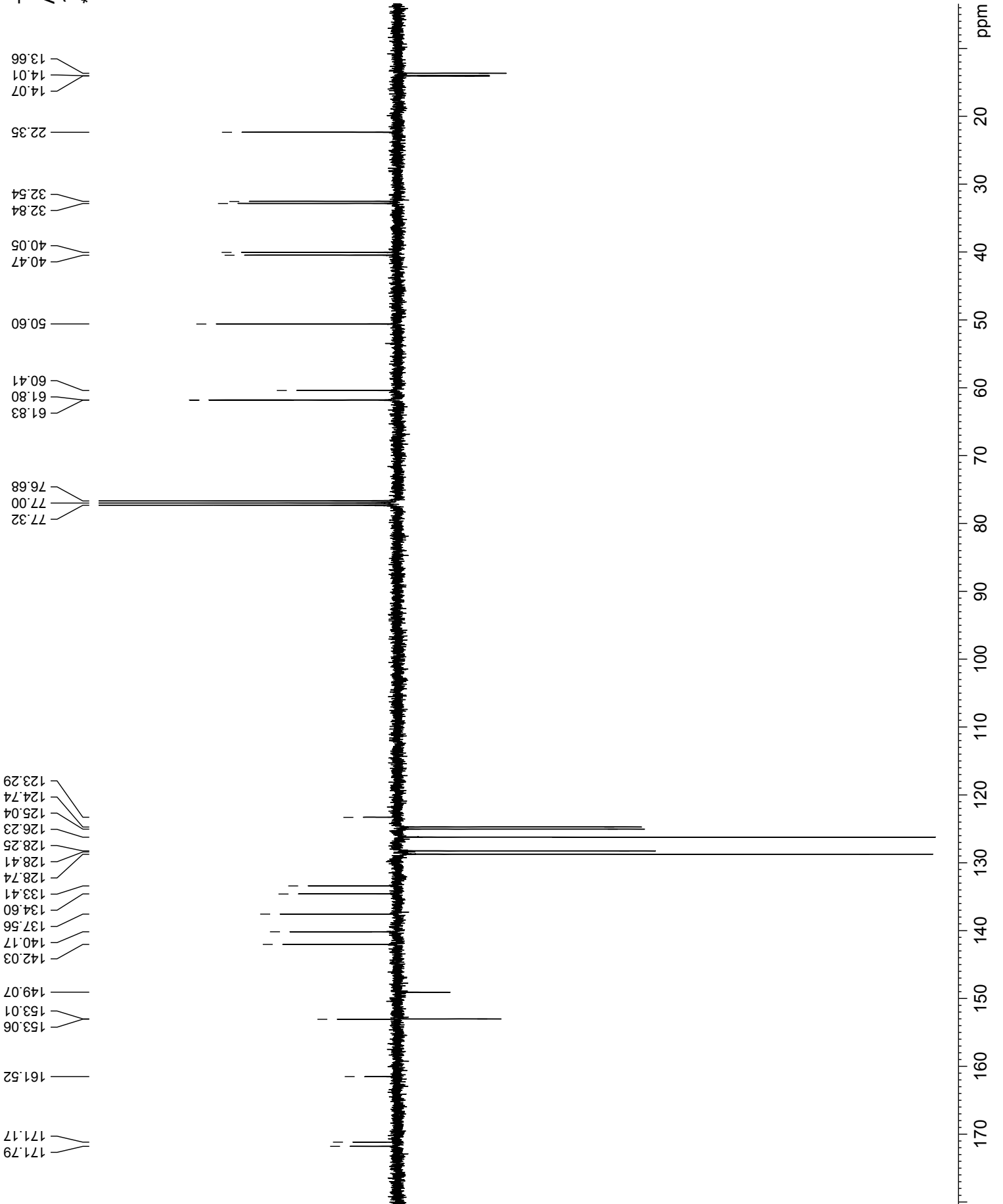
Current Data Parameters
NAME TUREK_SO-23
EXPNO 2
PROCNO 1
F2 - Acquisition Parameters
Date_ 20070605
Time 15.29
INSTRUM spect
PROBHD 5 mm TXI 1H-13
PULPROG zgpg30
TD 50120
SOLVENT CDCl3
NS 1657
DS 4
SWH 30303.031 Hz
FIDRES 0.604610 Hz
AQ 0.8270300 sec
RG 32768
DW 16.500 usec
DE 6.00 usec
TE 300.0 K
CNST11 0.000000
CNST2 160.000000
D1 2.00000000 sec
d20 0.00025000 sec
DELTA 0.00001910 sec
TD0 1
===== CHANNEL f1 =====
NUC1 13C
P1 15.00 usec
P2 30.00 usec
PL1 -0.80 dB
SFO1 125.7242110 MHz
===== CHANNEL f2 =====
CPDPRG2 waltz16
NUC2 1H
PCPD2 80.00 usec
PL12 19.79 dB
PL2 1.00 dB
SFO2 499.9520000 MHz
F2 - Processing parameters
SI 262144
SF 125.7125318 MHz
WDW EM
SSB 0
GB 0
PC 1.40



36492

TUREK PT-276
APT in CDCl3
15-04-06 RA

Current Data Parameters
NAME TUREK_PT-276
EXPNO 2
PROCNO 1
F2 - Acquisition Parameters
Date_ 20060416
Time 11:47
INSTRUM spect
PROBHD 5 mm PABBI 1H-
PULPROG zgpg30
TD 65536
SOLVENT CDCl3
NS 4096
DS 4
SWH 23960.814 Hz
FIDRES 0.365918 Hz
AQ 1.3664756 sec
RG 20642.5
DVI 20000 usec
DE 296.5 K
TE 296.5 K
CNSTZ 155.0000000
CNST11 1.0000000
D1 2.00000000 sec
d20 0.00645161 sec
DELTA 0.00001910 sec
===== CHANNEL f1 =====
NUC1 13C
P1 15.00 usec
PL1 30.00 dB
PL2 -1.00 dB
SFO1 100.6228298 MHz
===== CHANNEL f2 =====
CFDPRG2 waltz16
NUC2 1H
PCPD2 80.00 usec
PL2 3.00 dB
PL12 21.60 dB
SFO2 400.1316005 MHz
F2 - Processing parameters
SI 131072
SF 100.6127717 MHz
WDW EM
SSB 0
LB 0
GB 0
PC 1.40



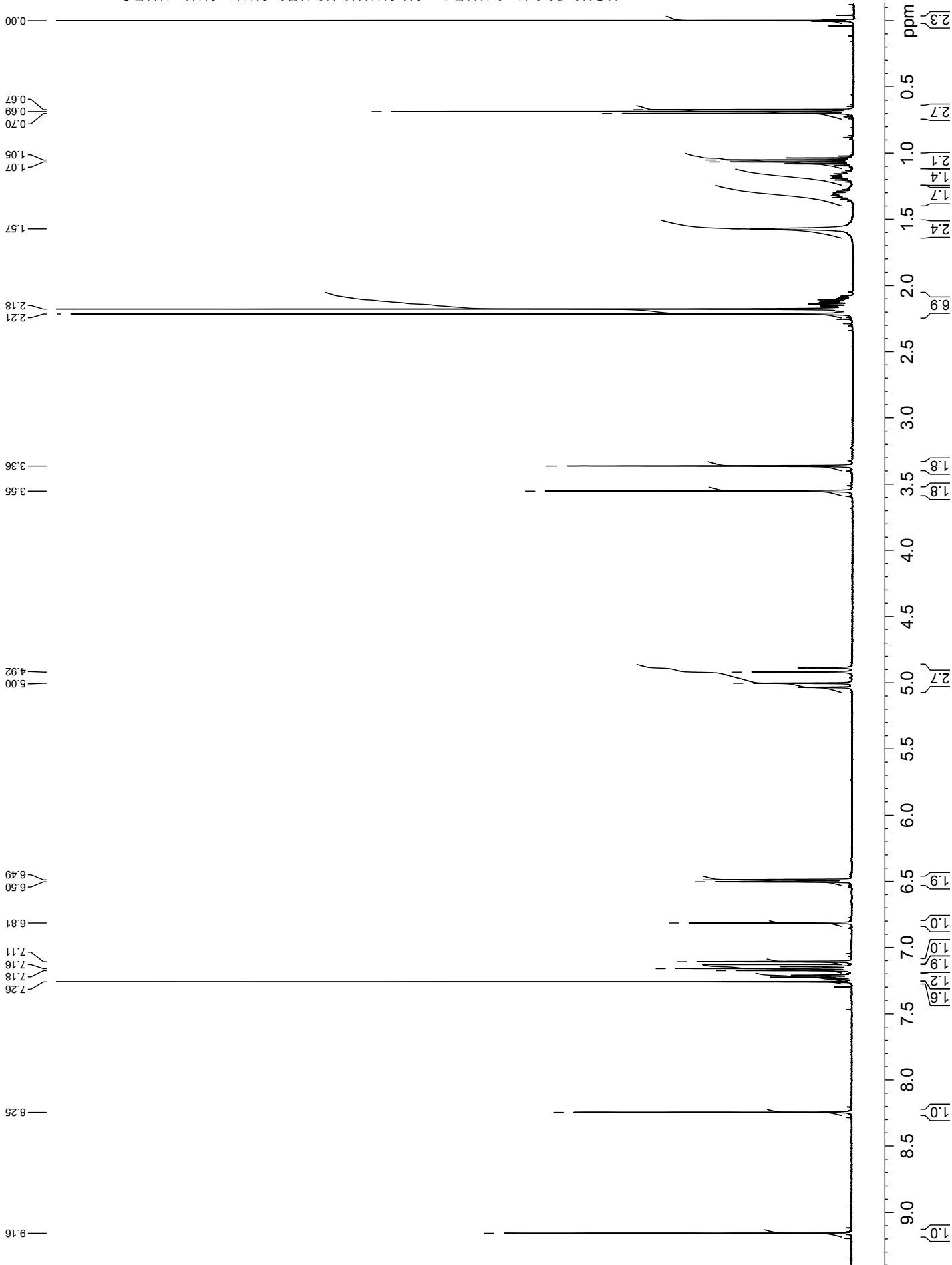
34034

TUREK PT-284
1H NMR in CDCl3
05-01-06 RA

Current Data Parameters
NAME TUREK_PT-284
EXPNO 1
PROCNO 1

F2 - Acquisition Parameters
Date_ 20060105
Time 9.00
INSTRUM spect
PROBHD 5 mm TXI 1H-13
PULPROG zg30
TD 65536
SOLVENT CDCl3
NS 32
DS 0
SWH 7002.801 Hz
FIDRES 0.106854 Hz
AQ 4.6793919 sec
RG 9
DW 71.400 usec
DE 6.00 usec
TE 305.0 K
D1 1.00000000 sec
TD0 1

==== CHANNEL f1 =====
NUC1 1H
P1 9.20 usec
PL1 1.00 dB
SFO1 500.1332508 MHz
F2 - Processing parameters
SI 131072
SF 500.1300134 MHz
WDW no
SSB 0
LB 0.00 Hz
GB 0
PC 20.00



TUREK PT-284
 APT in CDCI3
 05-01-06 RA

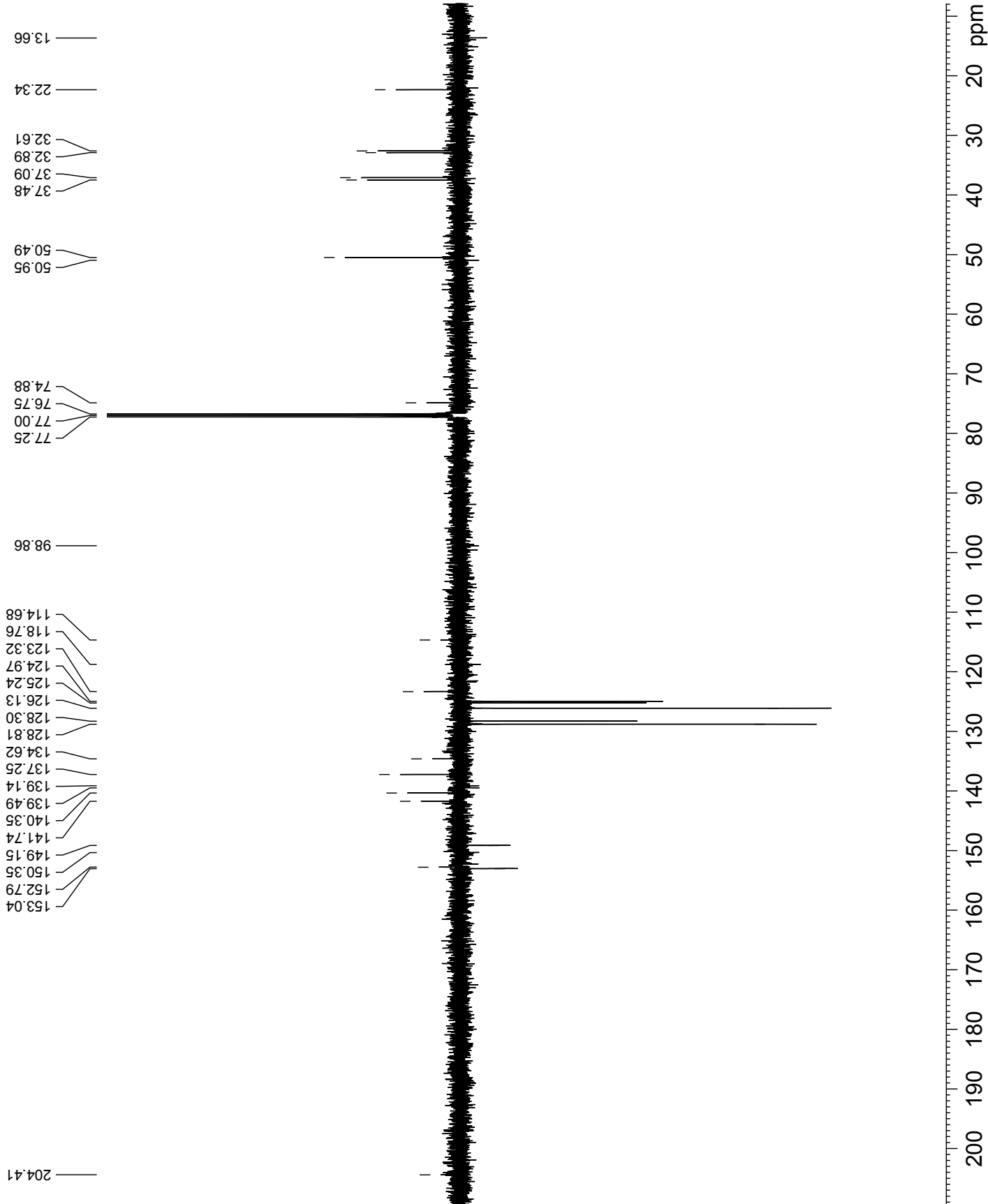
Current Data Parameters
 NAME TUREK_PT-284
 EXPNO 2
 PROCNO 1

F2 - Acquisition Parameters
 Date_ 20060105
 Time_ 9.14
 INSTRUM spect
 PROBHD 5 mm TXI 1H-13
 PULPROG gmod
 TD 40318
 SOLVENT CDCl3
 NS 4239
 DS 4
 SWH 31446.541 Hz
 FIDRES 0.779963 Hz
 AQ 0.6411221 sec
 RG 23170.5
 DW 15.900 usec
 DE 6.000 usec
 TE 305.0 K
 CNST2 160.000000
 CNST11 1.0000000
 D1 2.00000000 sec
 d20 0.00625000 sec
 DELTA 0.0001974 sec
 TDO 1

===== CHANNEL f1 =====
 NUC1 13C
 P1 15.50 usec
 P2 3.00 usec
 PL1 0.20 dB
 PL2 0.00 dB
 SFO1 125.7726799 MHz

===== CHANNEL f2 =====
 CPDPRG2 waltz16
 NUC2 1H
 P1 80.00 usec
 PCPD2 1.00 dB
 PL2 19.79 dB
 SFO2 500.1320005 MHz

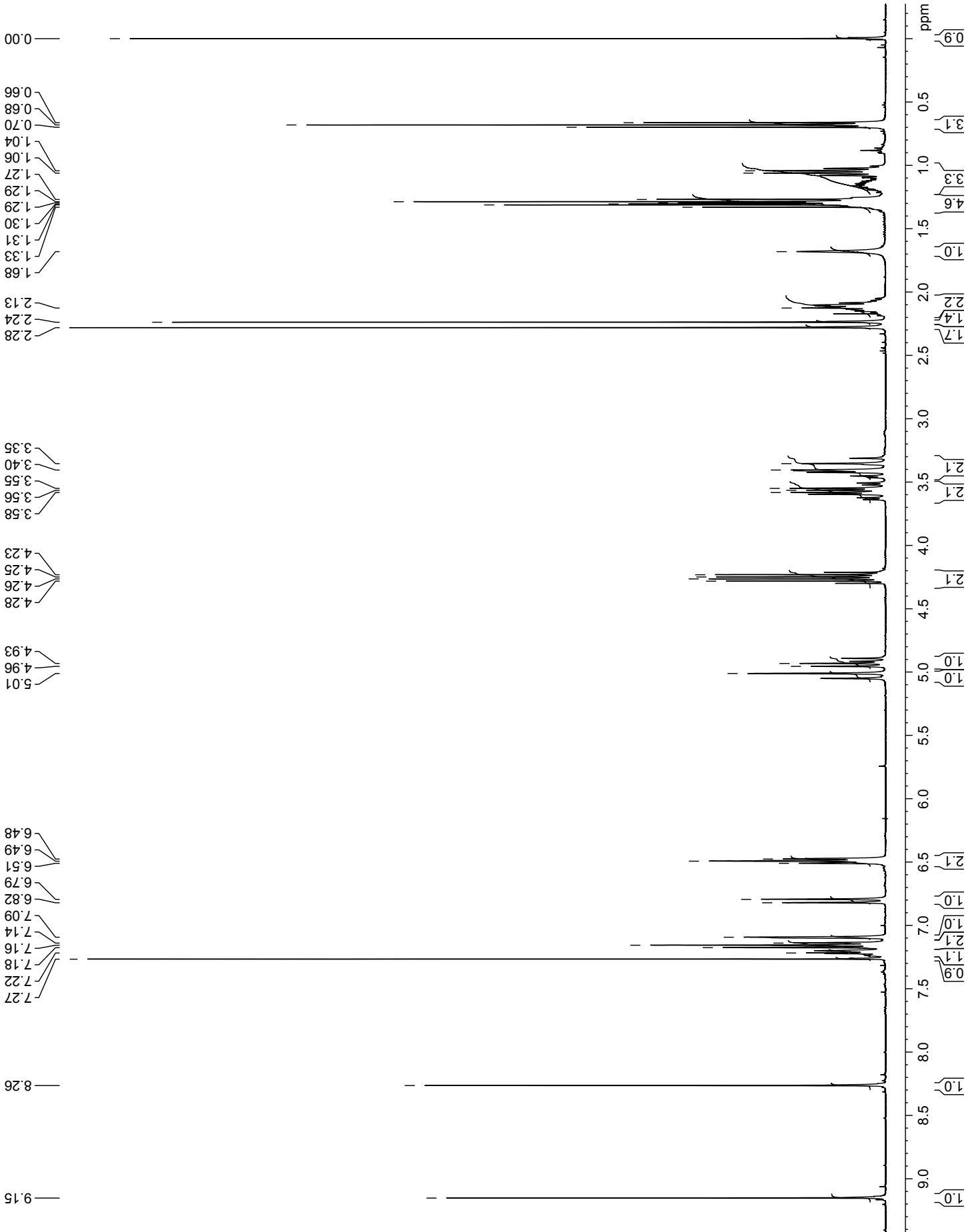
F2 - Processing parameters
 SI 131072
 SF 125.7577902 MHz
 EIM 0
 WDW 1.00 Hz
 LB 0
 GB 0
 PC 1.05



33161

TUREK PT-283
 1H NMR in CDCl3
 15-04-06 RA

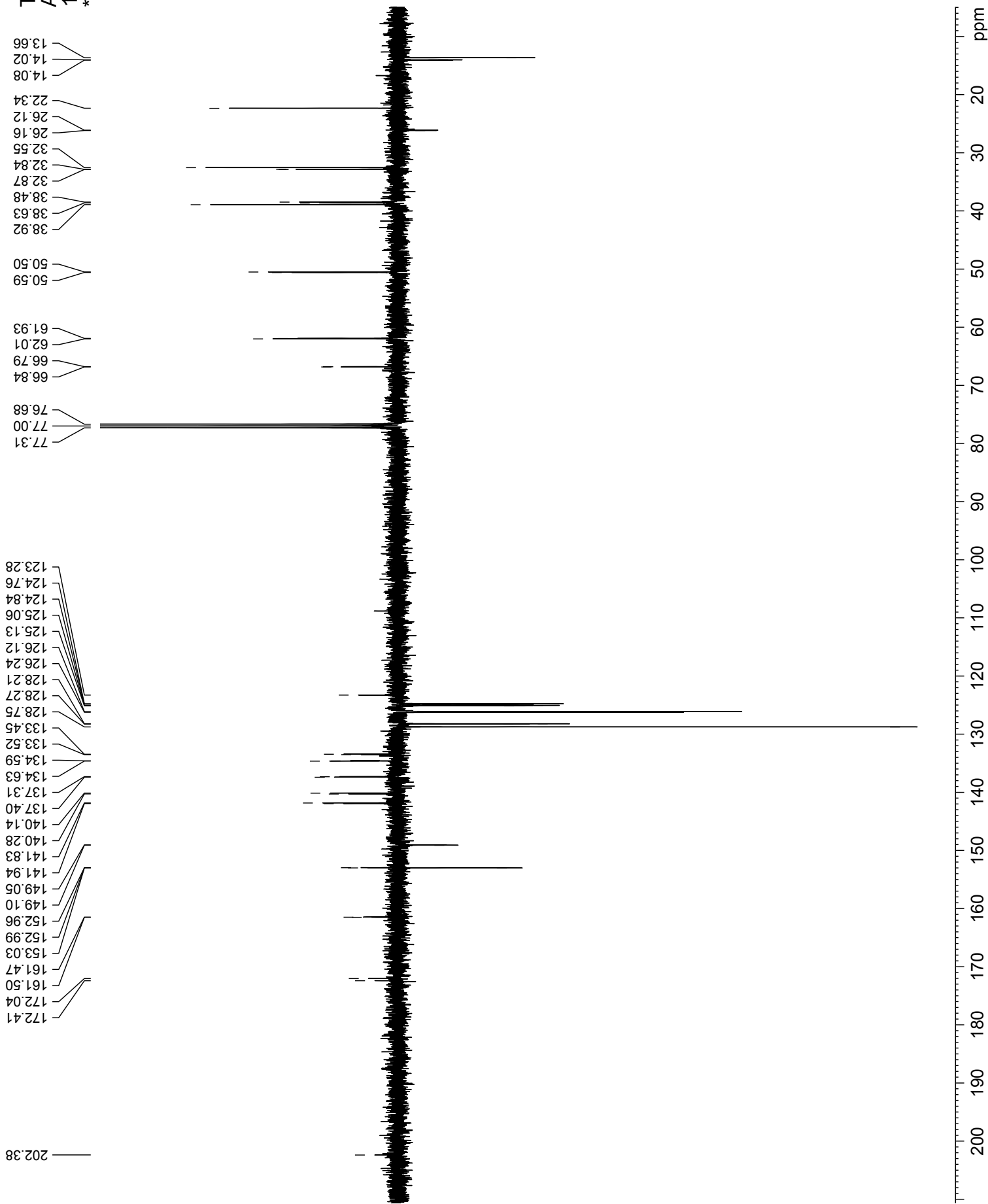
Current Data Parameters
 NAME TUREK_PT-283
 EXPNO 1
 PROCNO 1
 F2 - Acquisition Parameters
 Date_ 20060416
 Time 18.19
 INSTRUM spect
 PROBHD 5 mm PABBI 1H-
 PULPROG zg30
 TD 82780
 SOLVENT CDCl3
 NS 32
 DS 0
 SWH 8278.146 Hz
 FIDRES 0.100002 Hz
 AQ 4.9699619 sec
 RG 203.2
 DW 60.400 usec
 DE 6.00 usec
 TE 296.2 K
 D1 1.0000000 sec
 TDO
 ===== CHANNEL f1 =====
 NUC1 1H
 P1 9.40 usec
 PL1 3.00 dB
 SFO1 400.1324710 MHz
 F2 - Processing parameters
 SI 131072
 SF 400.1300071 MHz
 WIDW no
 SSB 0
 LB 0.00 Hz
 GB 0
 PC 80.00



34036

TUREK PT-283
APT in CDCl3
15-04-06 RA

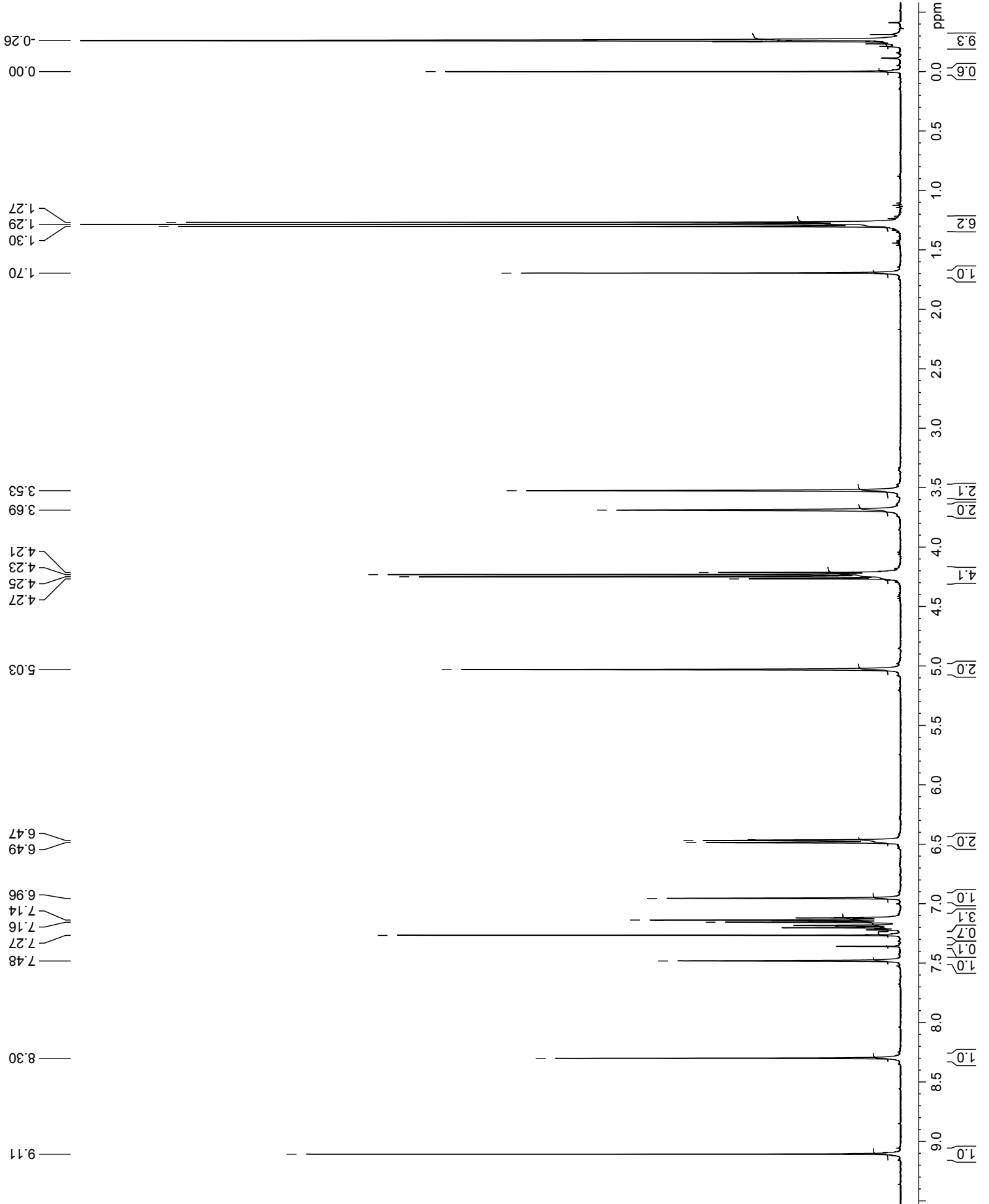
Current Data Parameters
NAME TUREK_PT-283
EXPNO 2
PROCNO 1
F2 - Acquisition Parameters
Date_ 20060416
Time 22.15
INSTRUM spect
PROBHD 5 mm PABBI 1H-
PULPROG zgpg30
TD 65536
SOLVENT CDCl3
NS 4096
DS 4
SWH 23960.814 Hz
FIDRES 0.365918 Hz
AQ 1.3664756 sec
RG 16390.4
RW 20160.0 usec
DE 296.6 K
TE 296.6 K
CNSTZ 155.0000000
CNST11 1.0000000
D1 2.00000000 sec
d20 0.00645161 sec
DELTA 0.00001910 sec
TD0 1
===== CHANNEL f1 =====
NUC1 13C
P1 15.00 usec
PL1 30.00 dB
PL2 -1.00 dB
SFO1 100.6228298 MHz
===== CHANNEL f2 =====
CFDPRG2 waltz16
NUC2 1H
PCPD2 80.00 usec
PL2 3.00 dB
PL12 21.60 dB
SFO2 400.1316005 MHz
F2 - Processing parameters
SI 131072
SF 100.6127718 MHz
WDW EM
SSB 0
LB 0
GB 0
PC 1.00



No tex

TUREK PT-312
1H NMR in CDCl3
31-05-06 RA

Current Data Parameters
NAME TUREK_PT-312
EXPNO 1
PROCNO 1
F2 - Acquisition Parameters
Date_ 20060531
Time 9.30
INSTRUM spect
PROBHD 5 mm PABBI 1H-
PULPROG zg30
TD 82780
SOLVENT CDCl3
NS 26
DS 0
SWH 8278.146 Hz
FIDRES 0.100002 Hz
AQ 4.9999619 sec
RG 161.3
DW 60.400 usec
DE 6.00 usec
TE 298.2 K
D1 1.00000000 sec
TD0 1
===== CHANNEL f1 =====
NUC1 1H
P1 8.00 usec
PL1 3.00 dB
SFO1 400.1324710 MHz
F2 - Processing parameters
SF 131072
SF 400.1300068 MHz
WDW no
SSB 0
LB 0.00 Hz
GB 0
PC 80.00



36484

TUREK PT-312
APT in CDCl3
31-05-06 RA

Compound 6ca

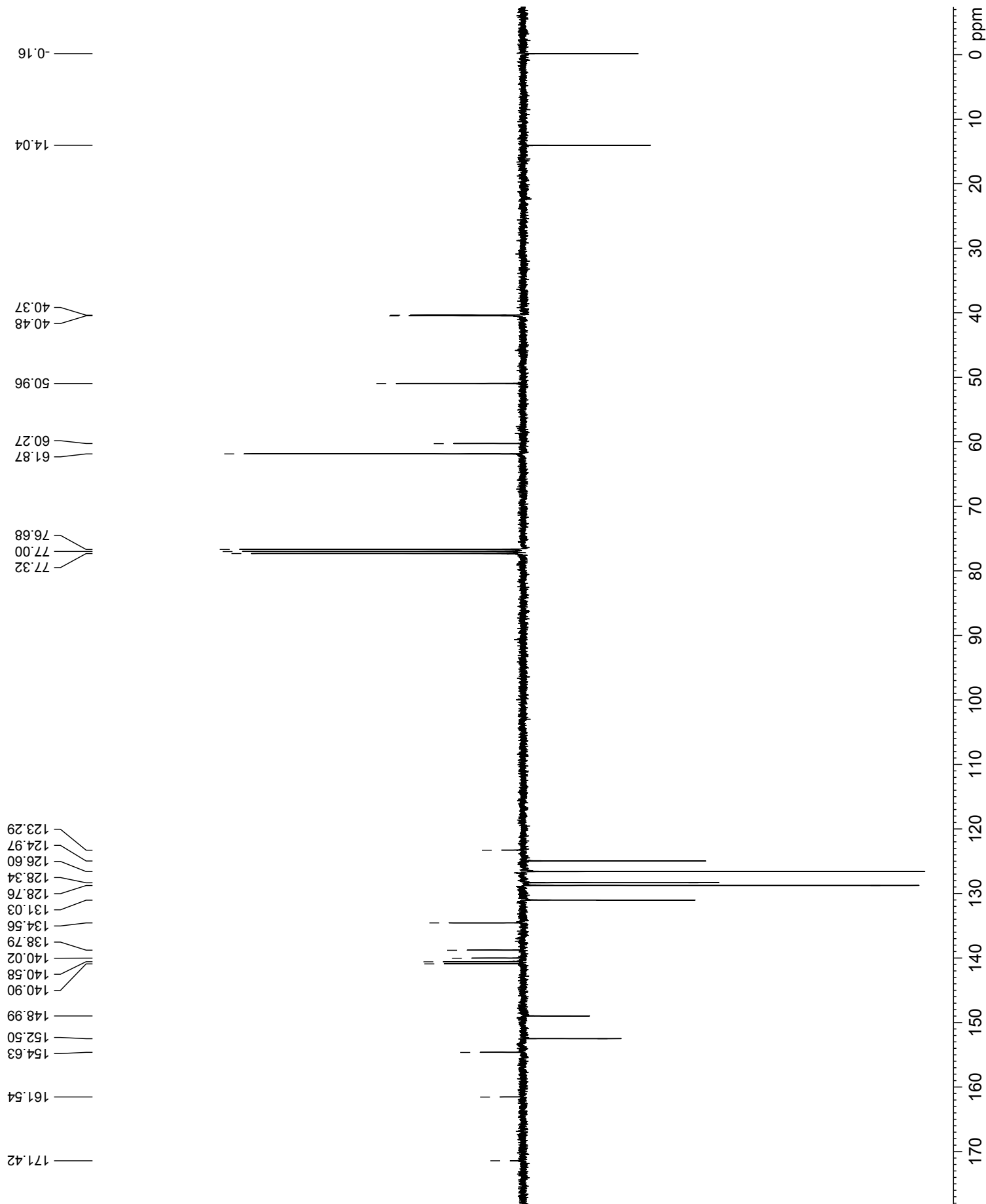
36484

Current Data Parameters
NAME TUREK_PT-312
EXPNO 2
PROCNO 1

F2 - Acquisition Parameters
Date_ 20060531
Time 4.05
INSTRUM spect
PROBHD 5 mm PABBI 1H-
PULPROG zgpg30
TD 65536
SOLVENT CDCl3
NS 5120
DS 4
SWH 23960.814 Hz
FIDRES 0.365918 Hz
AQ 1.3664756 sec
RG 10321.3
DVI 20000 usec
DE 298.2 K
TE 298.2 K
CNST2 160.0000000
CNST1 1.0000000
D1 2.00000000 sec
d2 0.00625000 sec
DELTA 0.00001910 sec
TD0 1

==== CHANNEL f1 =====
NUC1 13C
P1 15.00 usec
PL1 0.00 dB
PL2 30.00 usec
PL3 -1.00 dB
SFO1 100.6228298 MHz
==== CHANNEL f2 =====
CFDPRG2 waltz16
NUC2 1H
PCPD2 80.00 usec
PL2 3.00 dB
PL3 21.00 dB
SFO2 400.1316005 MHz

F2 - Processing parameters
SI 131072
SF 100.6127715 MHz
WDW EM
SSB 0
LB 0
GB 0
PC 1.40



TUREK SO-34
 1H NMR in CDCl3
 04-06-07 RA

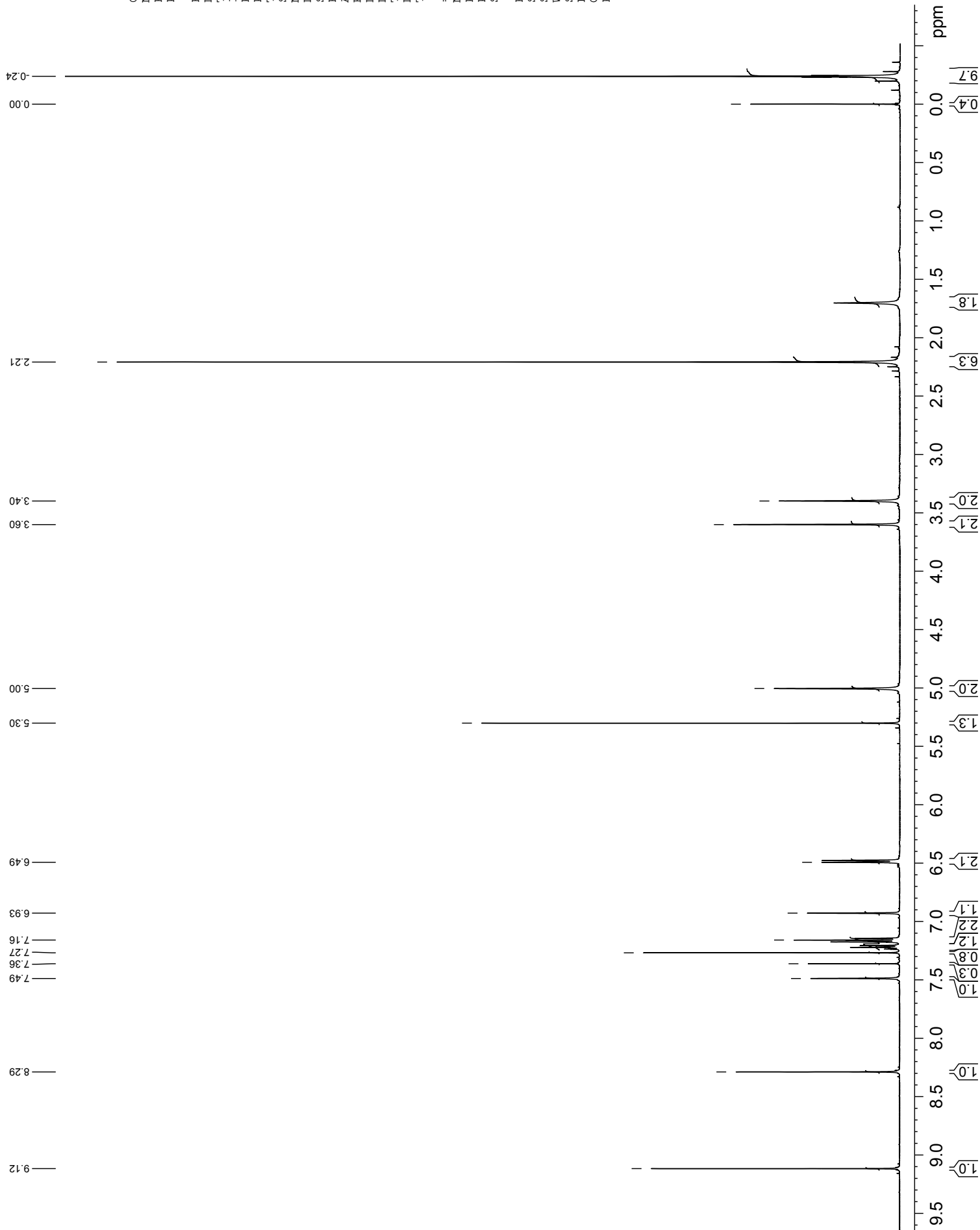
Current Data Parameters
 NAME TUREK_SO-34
 EXPNO 1
 PROCNO 1

F2 - Acquisition Parameters
 Date_ 20070604
 Time 10.15
 INSTRUM spect
 PROBHD 5 mm TXI 1H-13
 PULPROG zg30
 TD 60094
 SOLVENT CDCl3
 NS 32
 DS 0
 SWH 6009.615 Hz
 FIDRES 0.100004 Hz
 AQ 4.9999542 sec
 RG 28.5
 DW 83.200 usec
 DE 6.00 usec
 TE 300.0 K
 D1 1.00000000 sec
 TD0 1

==== CHANNEL f1 =====
 NUC1 1H
 P1 9.20 usec
 PL1 1.00 dB
 SFO1 499.9527497 MHz

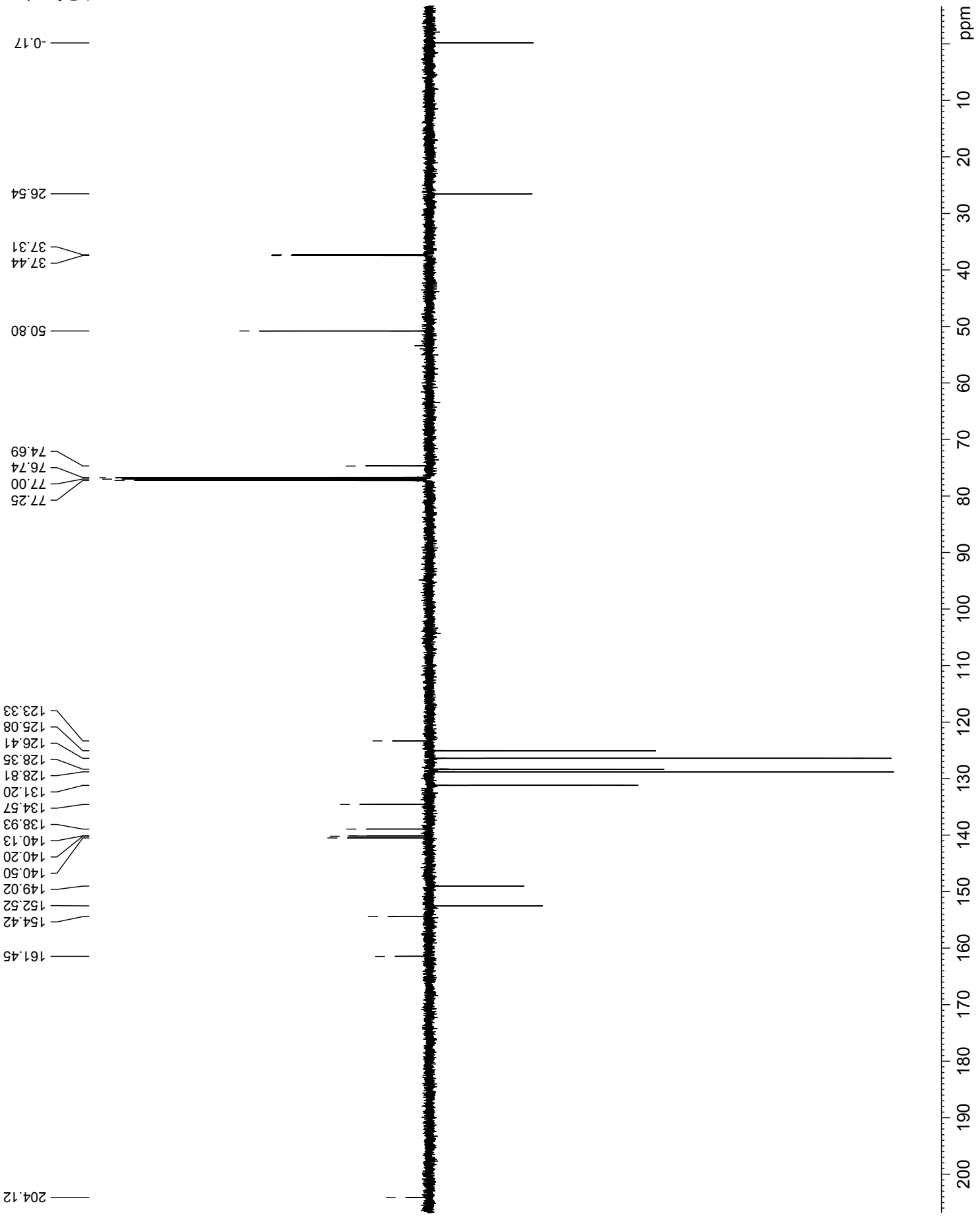
F2 - Processing parameters
 SI 131072
 SF 499.9500045 MHz
 WDW ho
 SSB 0
 LB 0.00 Hz
 GB 0
 PC 40.00

Compound 6cb



TUREK SO-34
APT in CDCI3
04-06-07 RA

Current Data Parameters
NAME TUREK_SO-34
EXPNO 2
PROCNO 1
F2 - Acquisition Parameters
Date_ 20070604
Time 11.13
INSTRUM spect
PROBHD 5 mm TXI TH-13
PULPROG jmod
TD 50120
SOLVENT CDCI3
NS 1150
DS 4
SWH 30303.031 Hz
FIDRES 0.604610 Hz
AQ 0.8270465 sec
RG 32768
DW 16.500 usec
DE 6.00 usec
TE 300.0 K
CNS11 1.0000000
CNS12 160.0000000
D1 2.00000000 sec
d20 0.00625000 sec
DELTA 0.00001910 sec
TD0 1
===== CHANNEL f1 =====
NUC1 13C
P1 15.00 usec
P2 30.00 usec
PL1 -0.80 dB
SFO1 125.7242110 MHz
===== CHANNEL f2 =====
CPDPRG2 walz16
NUC2 1H
PCPD2 80.00 usec
PL12 19.79 dB
PL2 1.00 dB
SFO2 499.9520000 MHz
F2 - Processing parameters
SI 262144
SF 125.7125318 MHz
WDW EM
SSB 0
LB 1.00 Hz
GB 0
PC 1.40



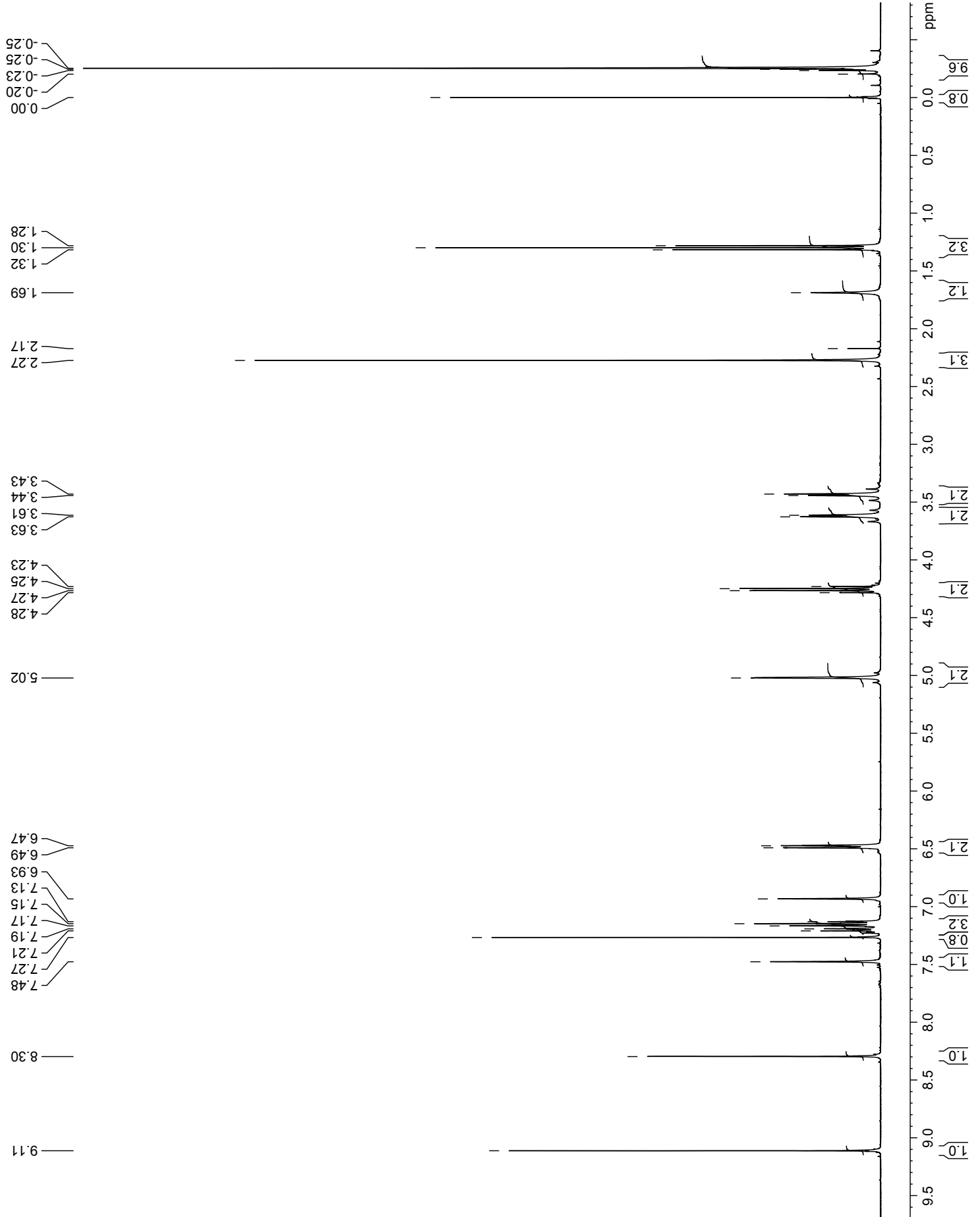
36482

TUREK PT-326
1H NMR in CDCl3
14-07-06 RA

Current Data Parameters
NAME TUREK_PT-326
EXPNO 1
PROCNO 1

F2 - Acquisition Parameters
Date_ 20060716
Time 1.41
INSTRUM spect
PROBHD 5 mm PABBI 1H-
PULPROG zg30
TD 82780
SOLVENT CDCl3
NS 32
DS 0
SWH 8278.146 Hz
FIDRES 0.100002 Hz
AQ 4.9999619 sec
RG 203.2
DW 60.400 usec
DE 6.00 usec
TE 300.0 K
D1 1.00000000 sec
TD0 1

==== CHANNEL f1 =====
NUC1 1H
P1 9.40 usec
PL1 3.00 dB
SFO1 400.1324710 MHz
F2 - Processing parameters
SI 131072
SF 400.1300067 MHz
WDW no
SSB 0
LB 0.00 Hz
GB 0
PC 40.00



34749

TUREK PT-326
 APT in CDCl3
 14-07-06 RA

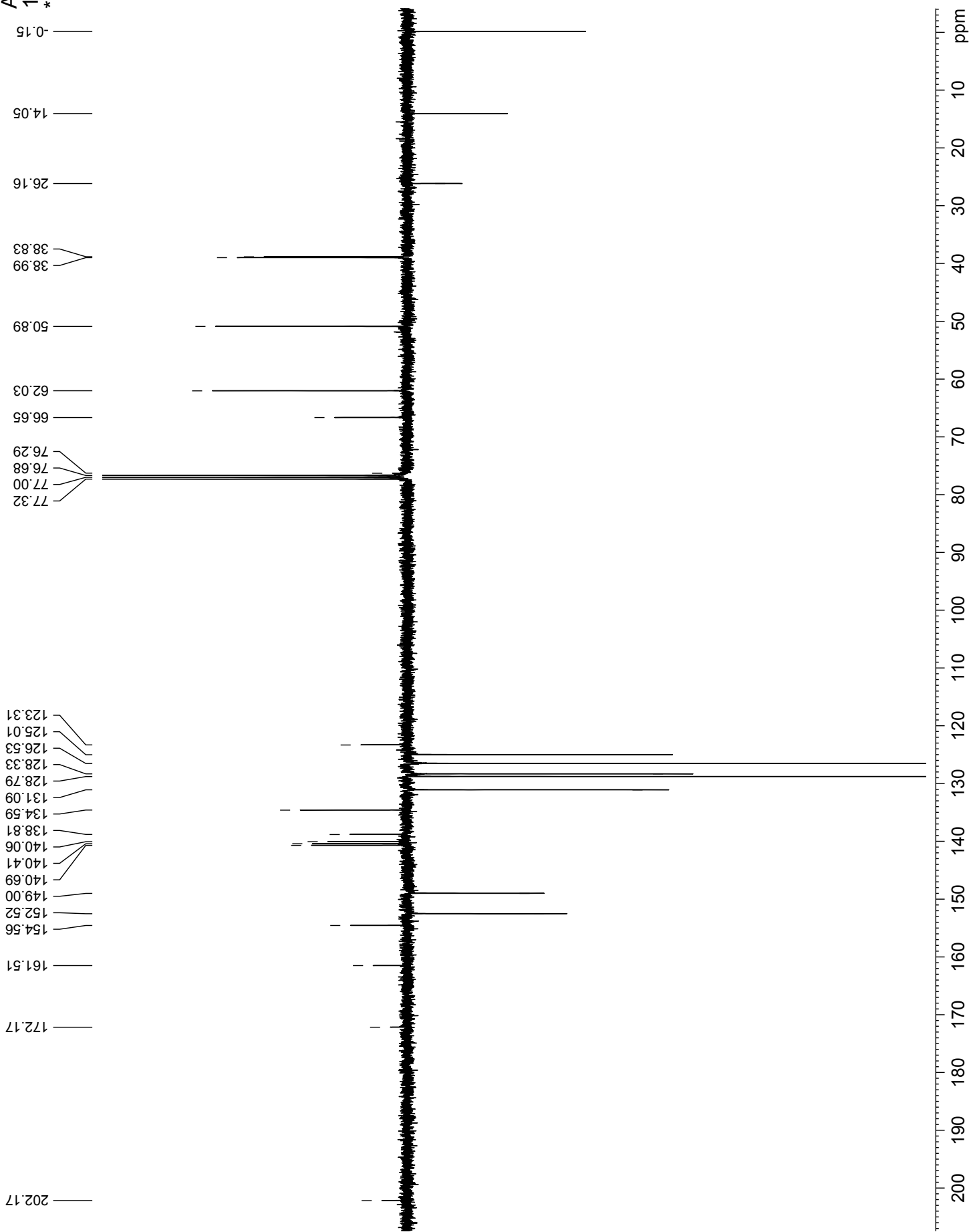
Current Data Parameters
 NAME TUREK_PT-326
 EXPNO 2
 PROCNO 1

F2 - Acquisition Parameters
 Date_ 20060716
 Time_ 9.29
 INSTRUM spect
 PROBHD 5 mm PABBI 1H-
 PULPROG jmod
 TD 65536
 SOLVENT CDCl3
 NS 8192
 DS 4
 SWH 23980.814 Hz
 FIDRES 0.365918 Hz
 AQ 1.3664756 sec
 RG 13004
 DW 20.850 usec
 DE 6.00 usec
 TE 300.0 K
 CNST2 160.000000
 CNST1 1.000000
 D1 2.0000000 sec
 d20 0.00625000 sec
 DELTA 0.00001910 sec
 TD0 1

==== CHANNEL f1 =====
 NUC1 13C
 P1 15.00 usec
 P2 30.00 usec
 PL1 -1.00 dB
 SFO1 100.6282898 MHz

==== CHANNEL f2 =====
 CPDPRG2 waltz16
 NUC2 1H
 P1 80.00 usec
 P2 3.00 dB
 PL2 21.60 dB
 SFO2 400.1316005 MHz

F2 - Processing parameters
 SI 131072
 SF 100.6127712 MHz
 WDW EM
 SSB 0
 LB 1.00 Hz
 GB 0
 PC 1.40



Compound 6cc

34749