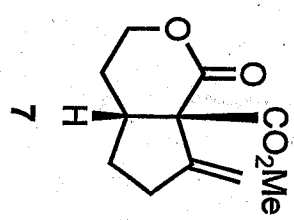
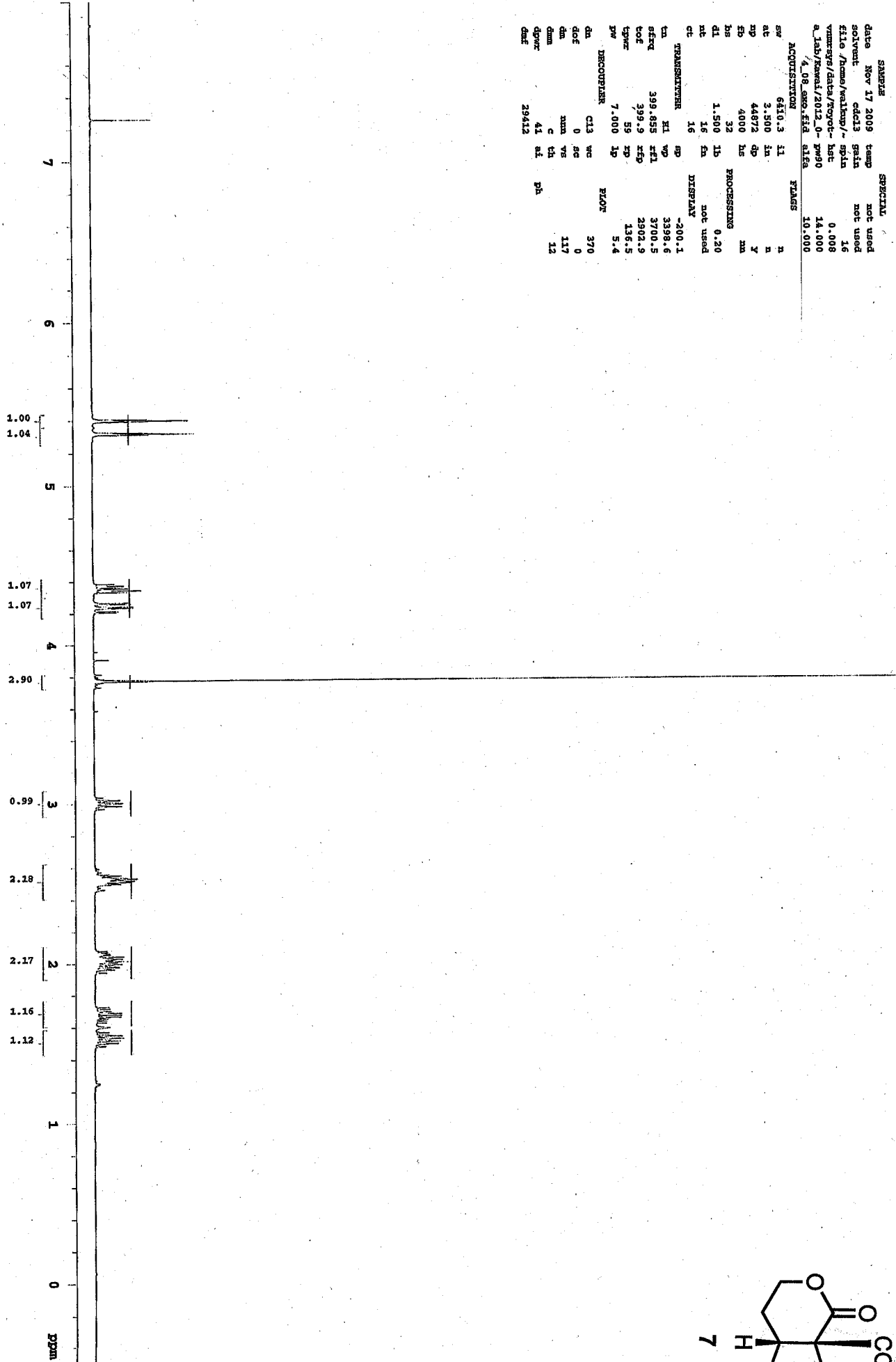


exp3 s2pul

SAMPLE SPECIAL
 date Nov 17 2009 temp not used
 solvent cdcl3 gain not used
 file /home/walkup/- spin 16
 ymmags/data/Toyot- hsc 0.008
 a_lab/kwael/2012-0- pw90 14.000
 /_08_000.fid aifa 10.000

ACQUISITION FLAGS
 sv 6410.3 il n
 at 3.500 in n
 ap 44872 ap y
 sb 4000 ls m
 bs 32 PROCESSING
 dl 1.500 ls 0.20
 nt 16 fm not used
 ct 16 DISPLAN
 TRANSMITTER sp -200.1
 ta h1 wp 3398.6
 freq 399.655 rf1 3700.5
 tof 399.9 rfr 2902.9
 tprz 59 zp 136.5
 pw 7.000 lp 5.4
 RECOVERER PLOT
 da c13 wt 370
 dof 0 sc 0
 da mm vs 117
 dm c th 12
 dprz 41 ai ph
 dnt 29412



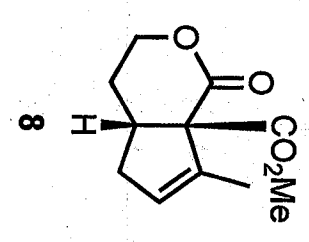
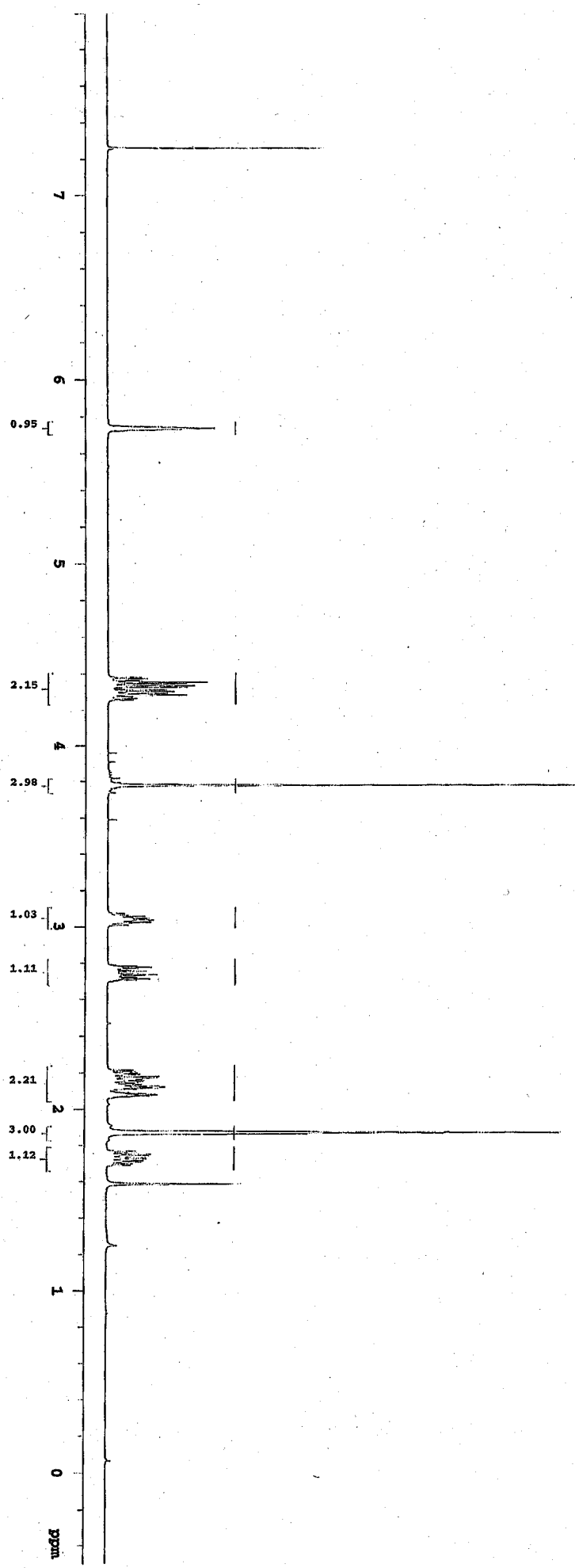
exp3_s3pu1

SAMPLE INFORMATION
date Nov 17 2003 temp not used
solvent cdcl3 gain not used
file /home/walshp/- spin 16
volumes/data/royce- hsc 0.008
a_lab/knowl/2012.0- p090 14.000
4_08_spsa.fid a16a 10.000

ACQUISITION PARAMS
sw 6410.3 il n
at 3.500 la n
xp 44872 dp y
ep 4000 hs nm
bs 32 PROCESSING
dl 1.500 lb 0.20
nt 16 ea not used
ct 16 DISPLAY

TRANSMITTER
ta HI wd -200.1
sfreq 399.855 rfi 3398.6
tcf 399.9 rfp 3700.5
tprz 59 rd 2902.9
pr 7.000 lp 139.4
-1.6

DECOUPLER
da C13 wd PZOR 370
dof 0 gc 0
dm nm vs 315
dum c th 28
dprz 41 ad ph
dnt 29412



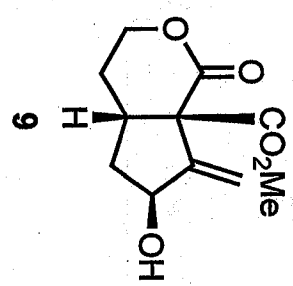
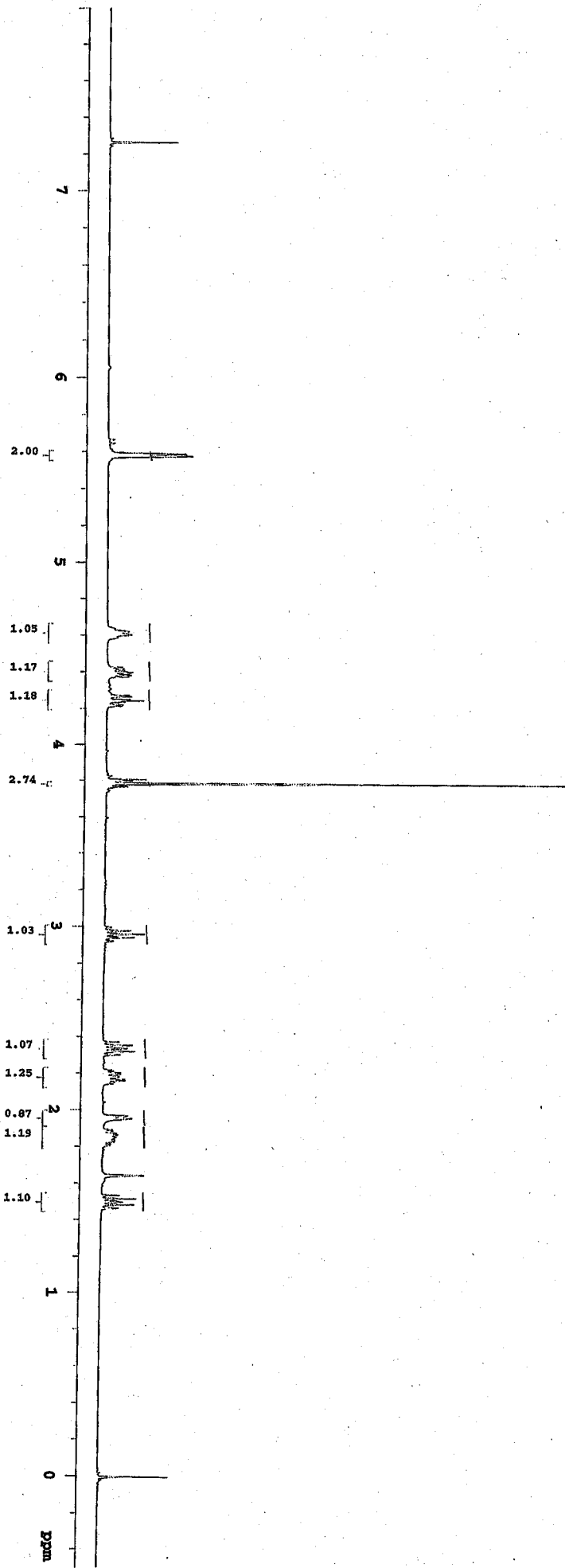
exp1 s2p11

SAMPLE INFORMATION
date Dec 13 2010 temp not used
solvent cdcl3 gain not used
file /media/.../VS- spin 16
B/EHR/Kewal/2010_1_1- bat 0.008
2_13_c.fid pw90 14.000
ACQUISITION 16s 10.000

PROCESSED
sw 6410.3 11 F16S
at 3.500 11
nd 44872 1h
eb 4000 6p
bs 32 1h
dl 1.500
nt 32 1b
ct 0 fa not used

PARAMETERS
na HI 9p -200.1
stkr 399.855 vp 3398.6
tof 399.9 xfl 3701.6
tpwr 59 xfp 2902.9
pw 7.000 xp -136.2
DECOUPLER C13 1p P10W 15.0

PLATE
dof 0 wc 370
dm 0
dmn 177
dpr 41 th 12
dnt 29412 ai cdc ph



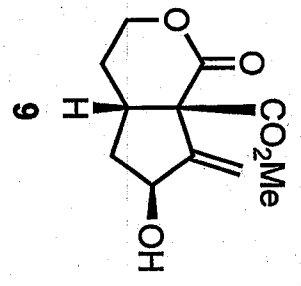
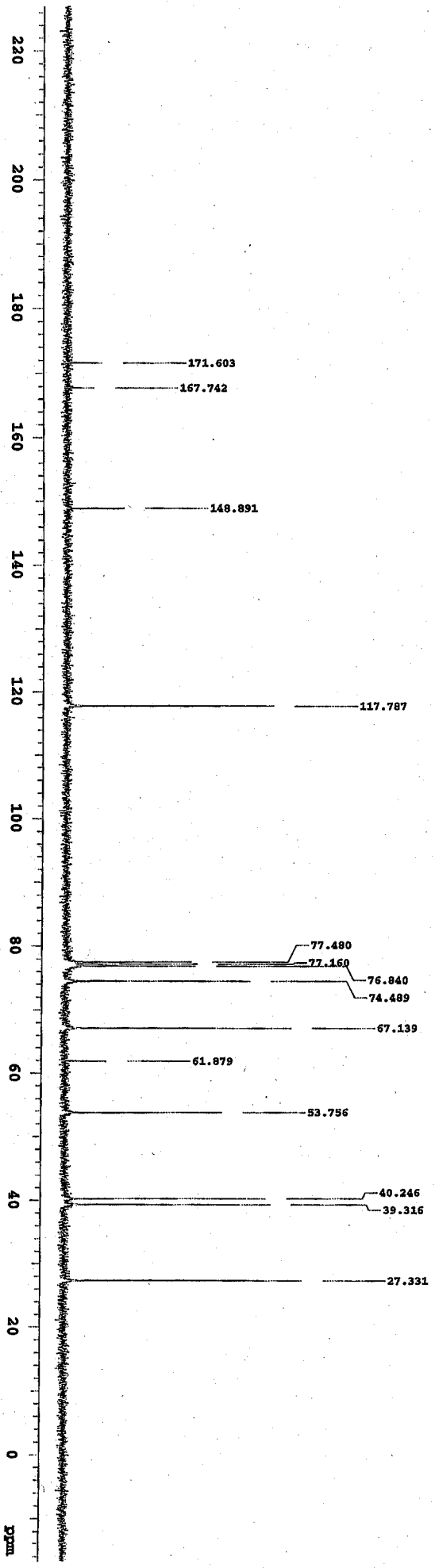
esp1 Carbon

SAMPLE SPECIALL
Date Dec 14 2010 temp not used
solvent c6c13 gain not used
File /media/JS- sp1n 16
B/mw/Kewell/c13/20- bat 0.008
10 12 14 h. fld PW90 12.800
ACQUISITION a1fa 10.000

24509.8 FLAGS
st 1.300 11 N
xp 63750 14 N
sp 17000 40 Y
bs 64 16 nm
d1 0.700 PROCESSING
nt 1034 15 1.00
ct 330 50 not used

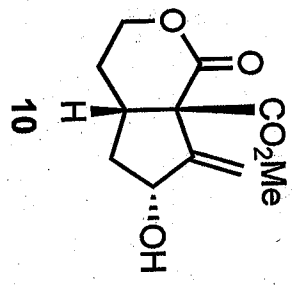
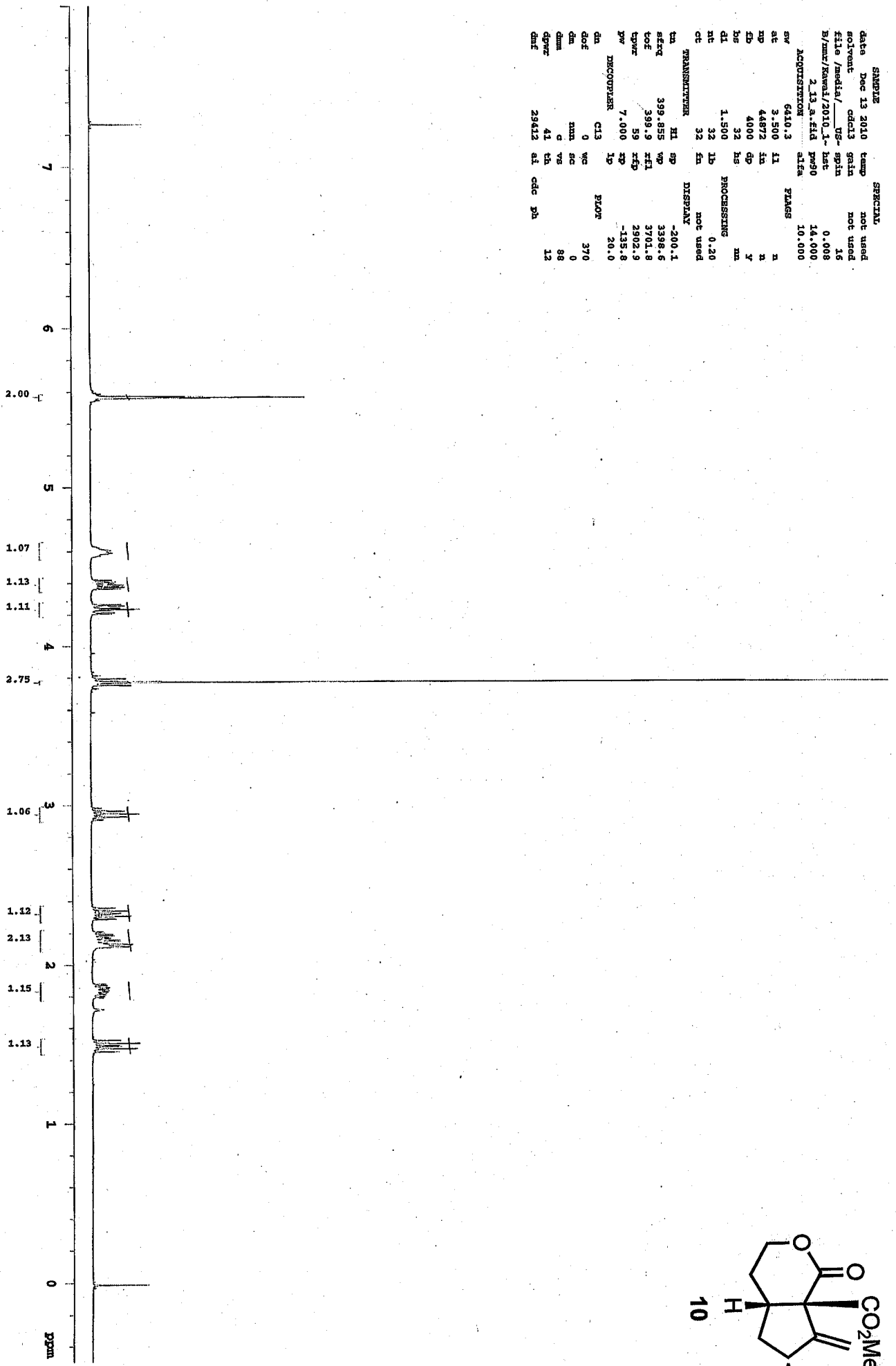
TRANSMITTER DISPLAY
na -1686.1
sftf 100.554 wp 24509.1
tof 1028.2 zfl 9444.7
lpwr 50 kEP 7757.9
pw 6.400 ip 123.2
19.1

DISCUSSER HI PLOT
da 0 wc 370
dm 0 xyy sc 0
dum v vb 1829
dpar 41 th 4
dnt 8961 at ph



exp2 63pul

SAMPLE SPECIAL
date Dec 13 2010 temp not used
solvent cdcl3 gain not used
file /medlab/2010_1- base 0.008
B/min/Kawala/2010_1- base 14.000
2_13_a.fid pw90 10.000
ACQUISITION a1ew
SW 6410.3 FLAGS
at 3.500 f1
np 44872 f4
dp 4000 dp
rs 32 rs
al 1.500 PROCESSING
nt 32 lb not used
ct 32 ea DISPLAY
TRANSMITTER HI SP -200.1
rfreq 399.855 wp 3398.6
fof 399.9 krl 3701.8
cpwr 59 xfp 2902.9
pw 7.000 sp -135.8
DECOUPLER 1p 20.0
dn cl3
dof 0 wc BLOW 370
dm mm sc 0
dm c vs 88
dpr 41 th
dmf 29412 al cdc ph 12

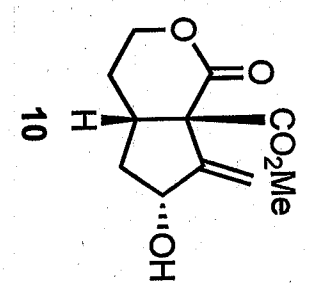
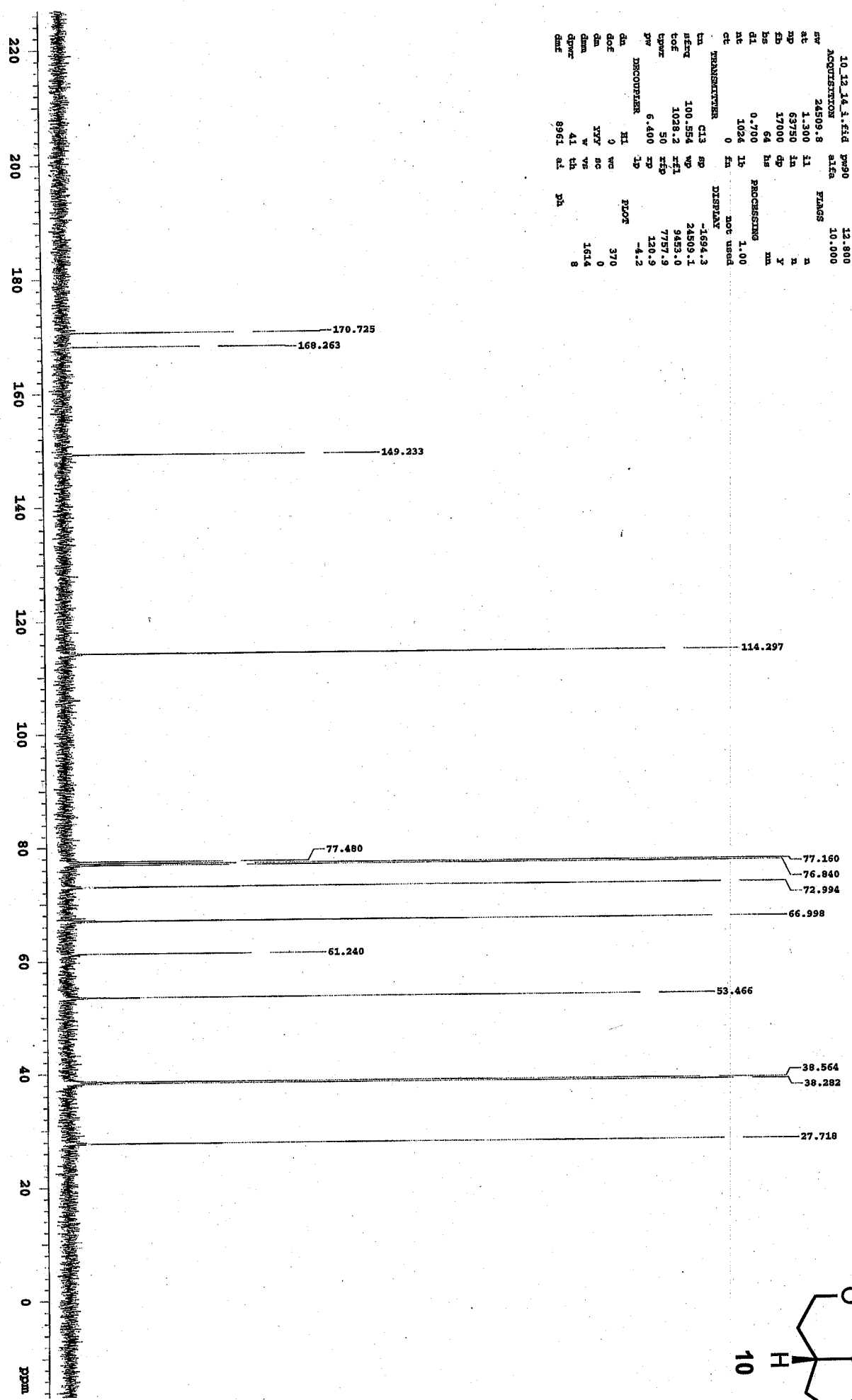


exp2 Carbon

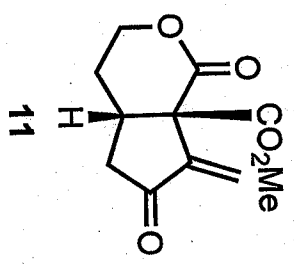
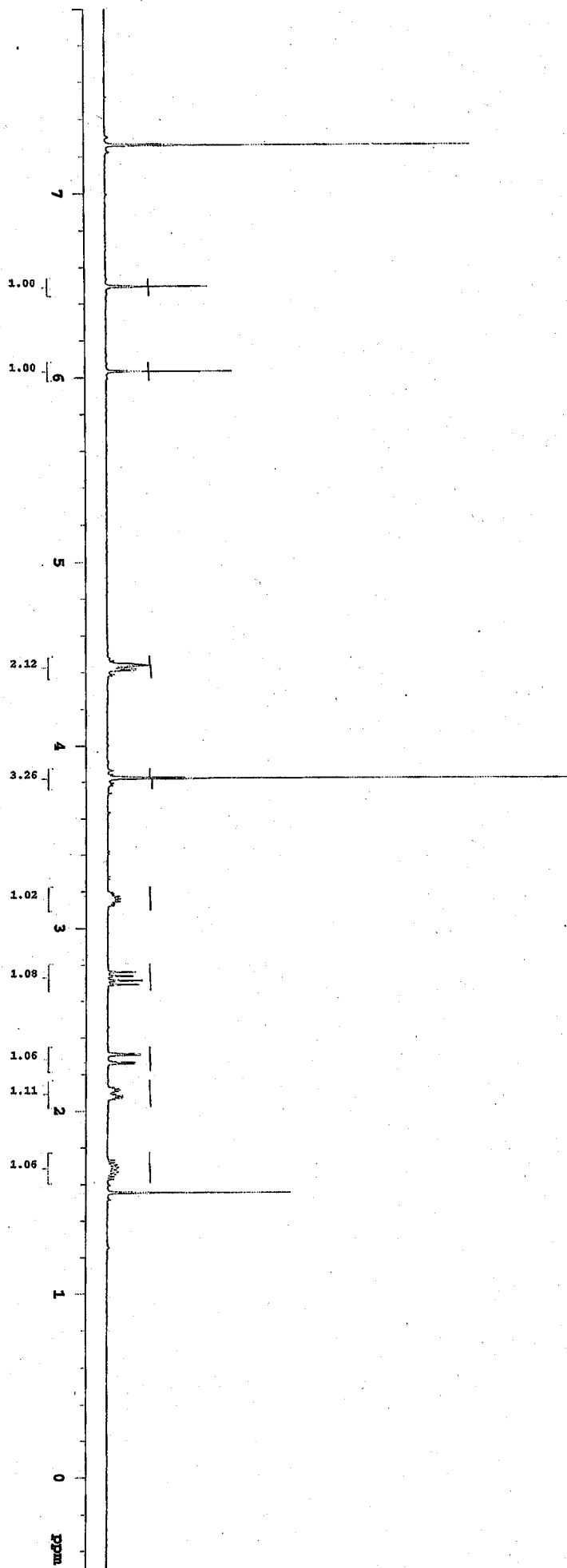
SMURLE SPECIAL
date Dec 14 2010 temp not used
solvent cdcl3 spin not used
file /media/_us- spin 16
B/mcr/Kswel/c13/20- hsc 0.008
10_12_14_1.fid pw90 12.800
ACQUISITION s1fa 10.000
SW 24509.8 FTMS
at 1.300 f1 2
xp 63750 f2 x
fp 17000 gp y
hs 64 hs nm
hl 0.700 PROCESSING
nt 1024 lb 1.00
ct 0 fa not used

TRANSMITTER DISPLAY
tn c13 sp -1694.3
seql 100.554 wp 24509.1
cof 1028.2 rfl 9443.0
cpwr 50 rfp 7757.9
pw 6.400 rp 120.9
-4.2

DECOUPLER HI LP PLOT
dc 0
dof 0 wc 370
sm 0 xyf sc 0
dm v vs 1614
dwr 41 th 8
dnt 8961 at 2h

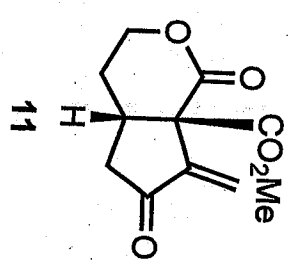
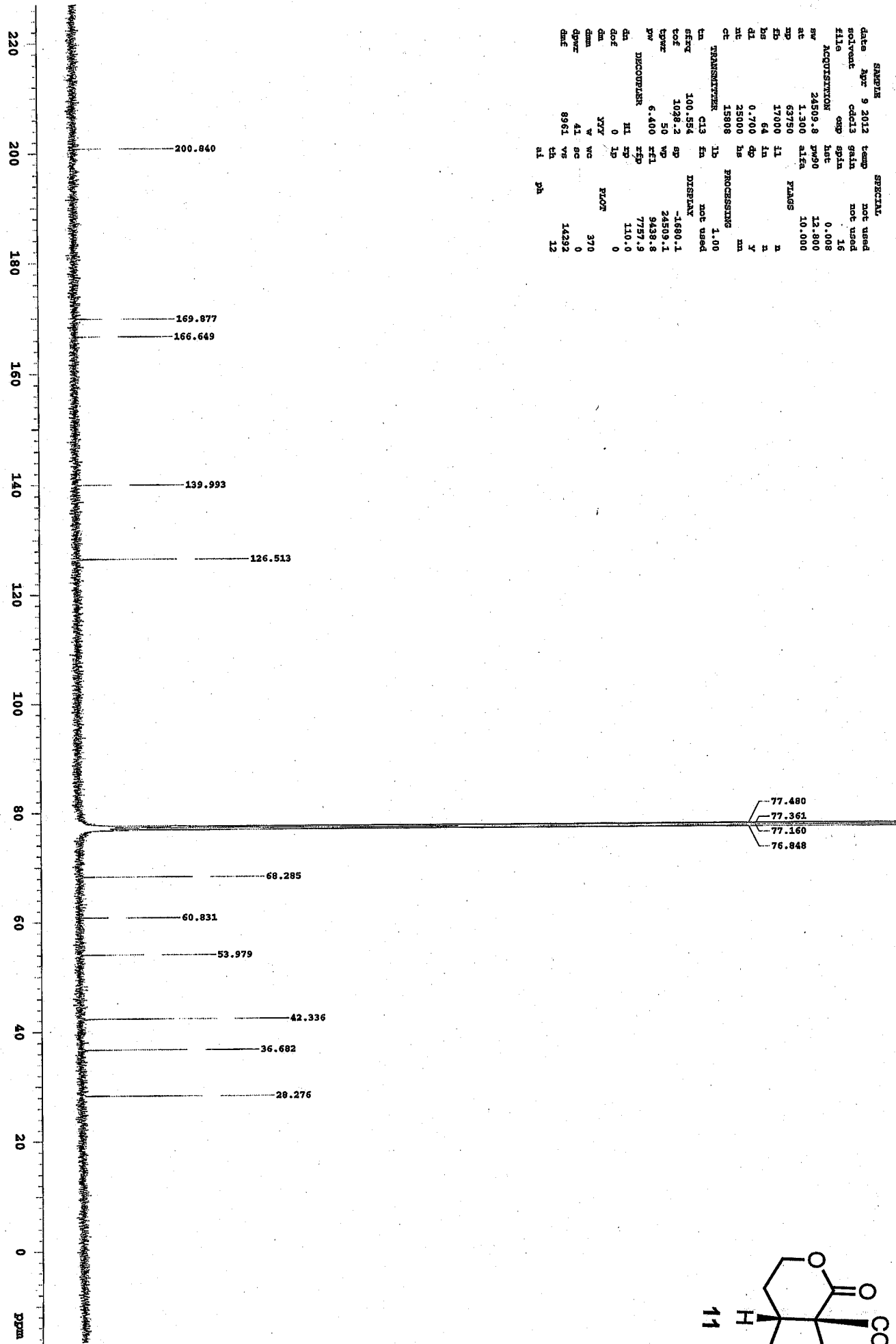


DATE	APR 9 2012	TEMP	NOT USED
SOLVENT	CDCl3	SHIFT	NOT USED
FILE	exp1	SPIN	16
ACQUISITION	NAME	TIME	0.008
	6410.3	FW90	15.200
	3.500	ALFA	10.000
RF	44872	FLAGS	
F2	4000	F1	N
F3	32	F4	N
F4	1.500	F5	Y
F5	16	F6	N
CT	16	PROCESsing	
TRANSMITTER	H1	F2	0.20
	HI	FM	NOT USED
SFREQ	399.885	SP	-200.1
LOF	399.9	WD	3398.6
PR	7.600	REF1	3701.0
DISCOUPLER	CL3	REF2	2802.9
DOF	0	IP	19.3
DM	0	IPLOT	0
DMN	G	WC	370
DMX	41	SC	0
OPWR	29412	VS	89
DMF	VA	TH	12
	VA	SI	cdc
	VA	PA	

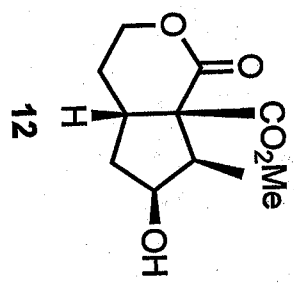
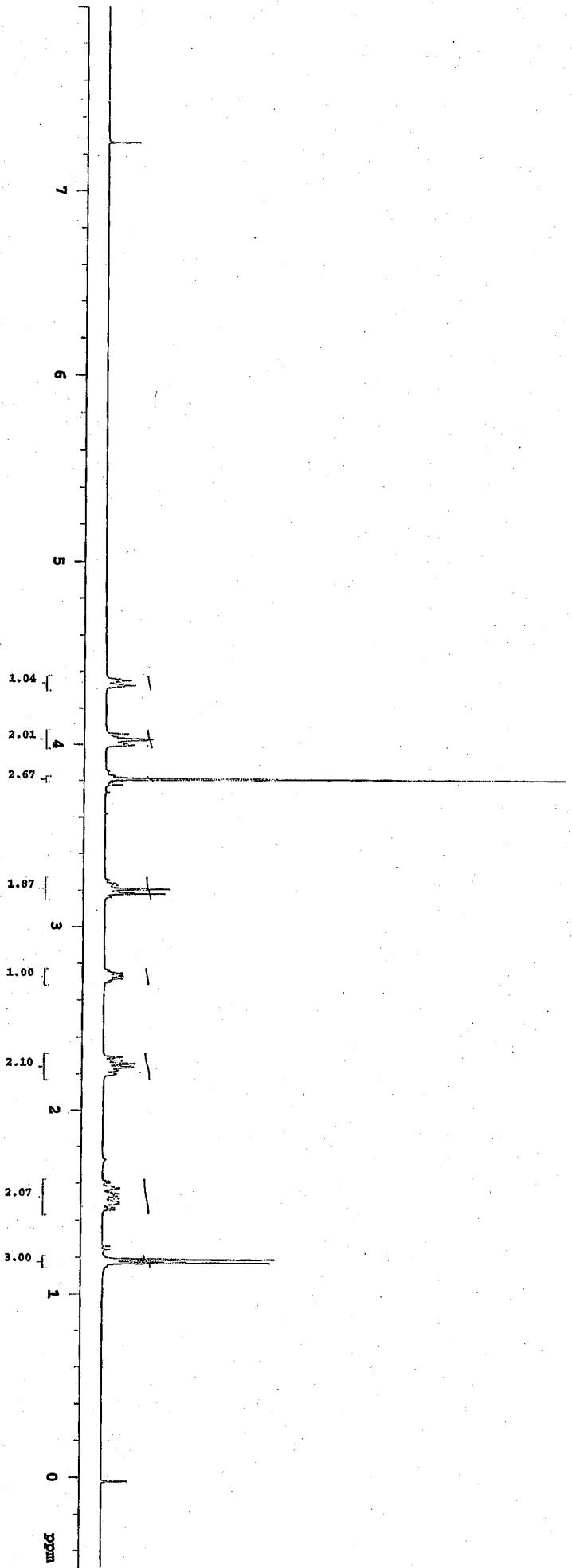


exp1 Carbon

SAMPLE	9	2012	temp	not used
date	Apr		cd13	gain
solvent	cd13	spin	not used	
file	exp	hst	0.008	16
ACQUISITION	exp	hst	0.008	16
sv	24509.8	pw90	12.800	
at	1.300	alfa	10.000	
mp	53750	FLAGS		
sp	17000	fl	n	
kg	64	ln	n	
dl	0.700	dp	y	
hl	25000	hb	nn	
ct	15808	PROCESSING		
TRANSMITTER	1p		1.00	
tn	C13	fn	not used	
sfreq	100.554	DISP		
tof	1028.2	gp	-1680.1	
lppwr	50	wp	24509.1	
pw	6.400	zfl	9438.8	
DECOMPLER	hl	tzp	7757.9	
dn	hl	tz	110.0	
doe	0	lp	0	
dm	yyy	ELDT		
dmm	v	vc	370	
dppwr	41	gc	0	
gmc	8961	vg	14292	
	ca	ca	12	
	al	pa		

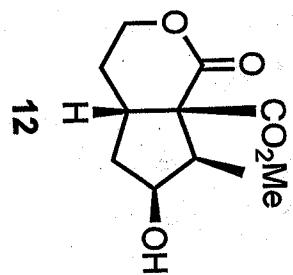
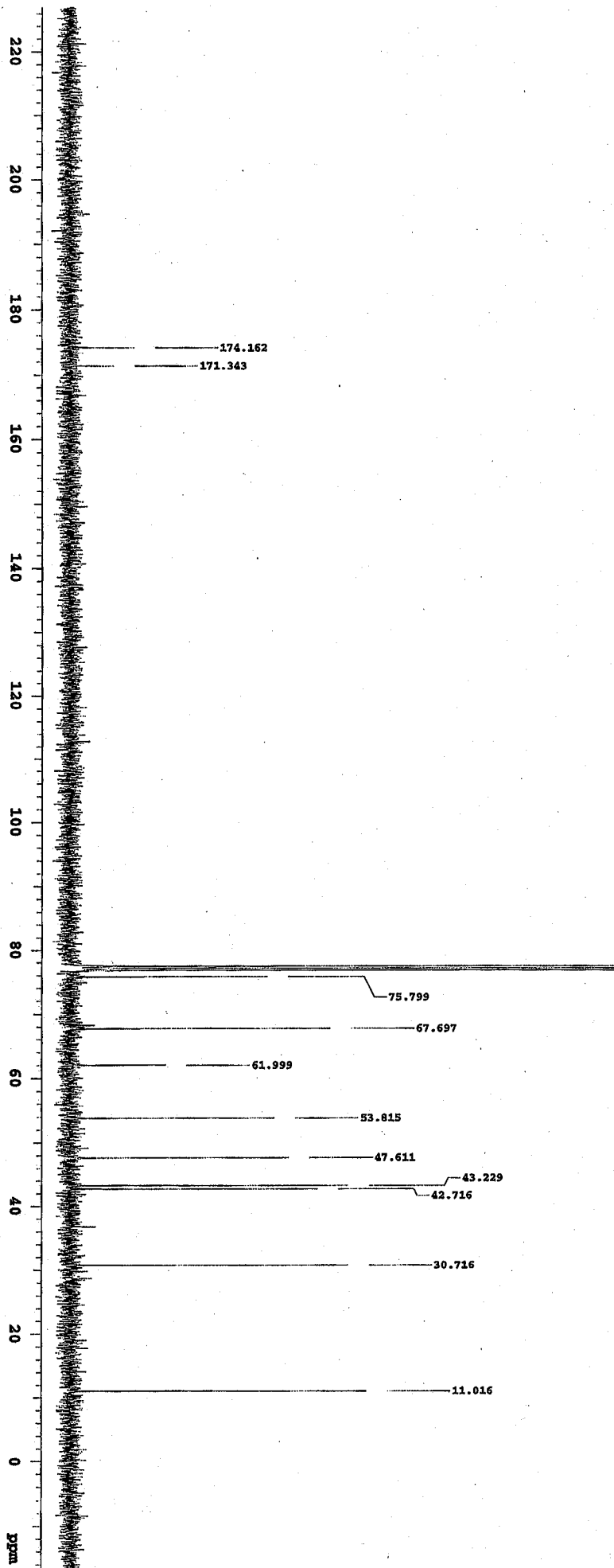


SAMPLE
 date Jan 11 2011 temp Not used
 solvent CDCl3 gsin Not used
 file /media/05- gsin 16
 B/mw/Kawal/2011_0- htc 0.008
 1_11_3.fid pw90 14.000
ACQUISITION a1ea 10.000
 sr 6410.3 FIDMS
 ac 3.500 11 n
 ap 4.672 1a n
 sb 4.000 4p y
 bs 32 8s xm
 dl 1.500 PROCESSING
 nt 16 1p not used
 ct 16 8n DISPLAY
TRANSMITTER HI 9p -200.1
 ka 399.855 wd 3398.6
 lof 399.9 xei 3703.6
 tpmr 59 xfp 2902.9
 pw 7.000 xp 36.8
DECOUPLER 1p 29.5
 dm CD3 PLOT
 dof 0 wc 370
 dm xna sc 0
 dnm c vs 47
 dpr 41 th 12
 dof 29412 at cdc ph



exp1 Carbon

DATE	Dec 16 2010	TEMP	not used
SOLVENT	cdcl3	GAIN	not used
FILE	/media/ps- spin		16
3/mer/Kemell/013/20- hstc			0.008
10_12_16_a.fid	19990		12.800
ACQUISITION	alza	FLAGS	10.000
SW	24509.8		
AT	1.300	IL	2
AP	63750	IN	2
BP	17000	DP	2
BS	64	HS	MM
CL	0.700		
CT	1024	1P	1.00
CT	0	EM	not used
TRANSMITTER		DISPLAY	
TA	G13	SP	-1681.6
AFREQ	100.554	WP	24509.1
LOF	1028.2	FEI	9440.3
UPWR	50	KFD	7757.9
VP	6.400	XP	106.5
DECODE	HL	1P	7.8
DOF	0	WIC	370
DM	YTY	SG	0
DMN	W	VS	4624
DPWR	41	CA	10
DMF	8961	SI	
		PH	

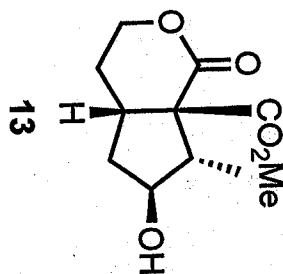
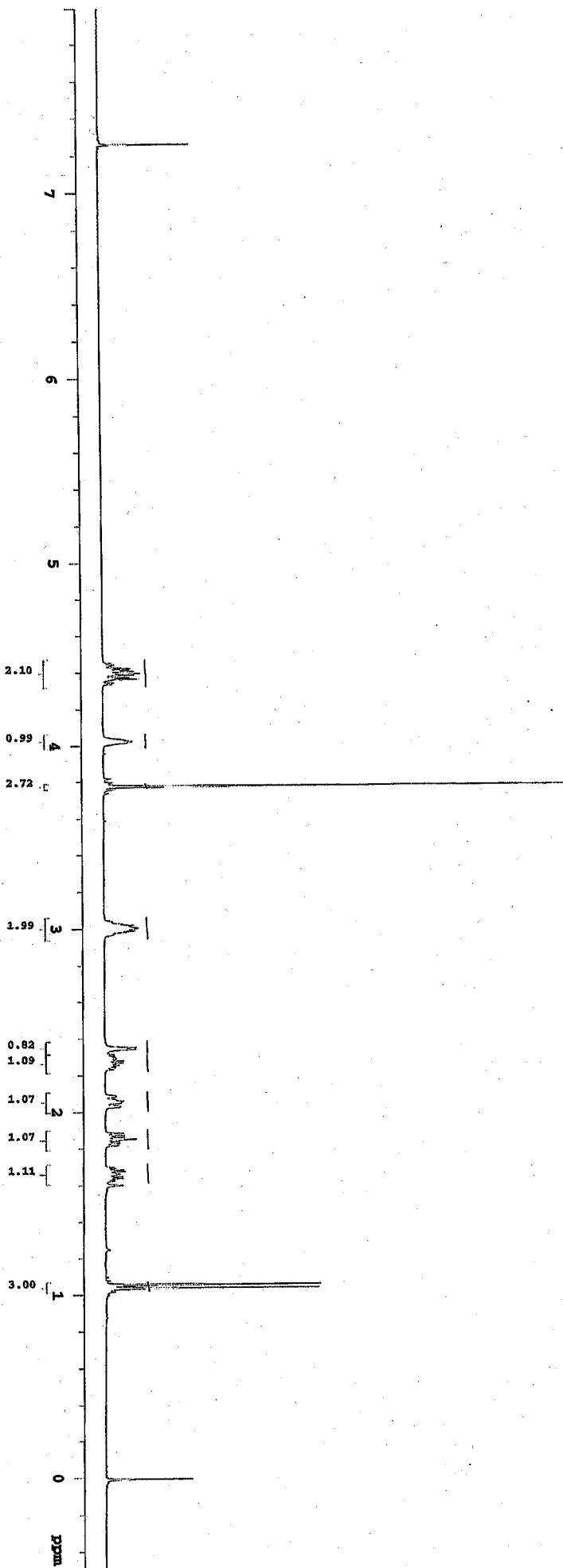


expt 82pul

SNMR2R

SPECTRAL

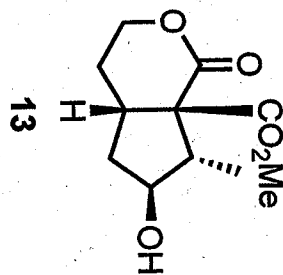
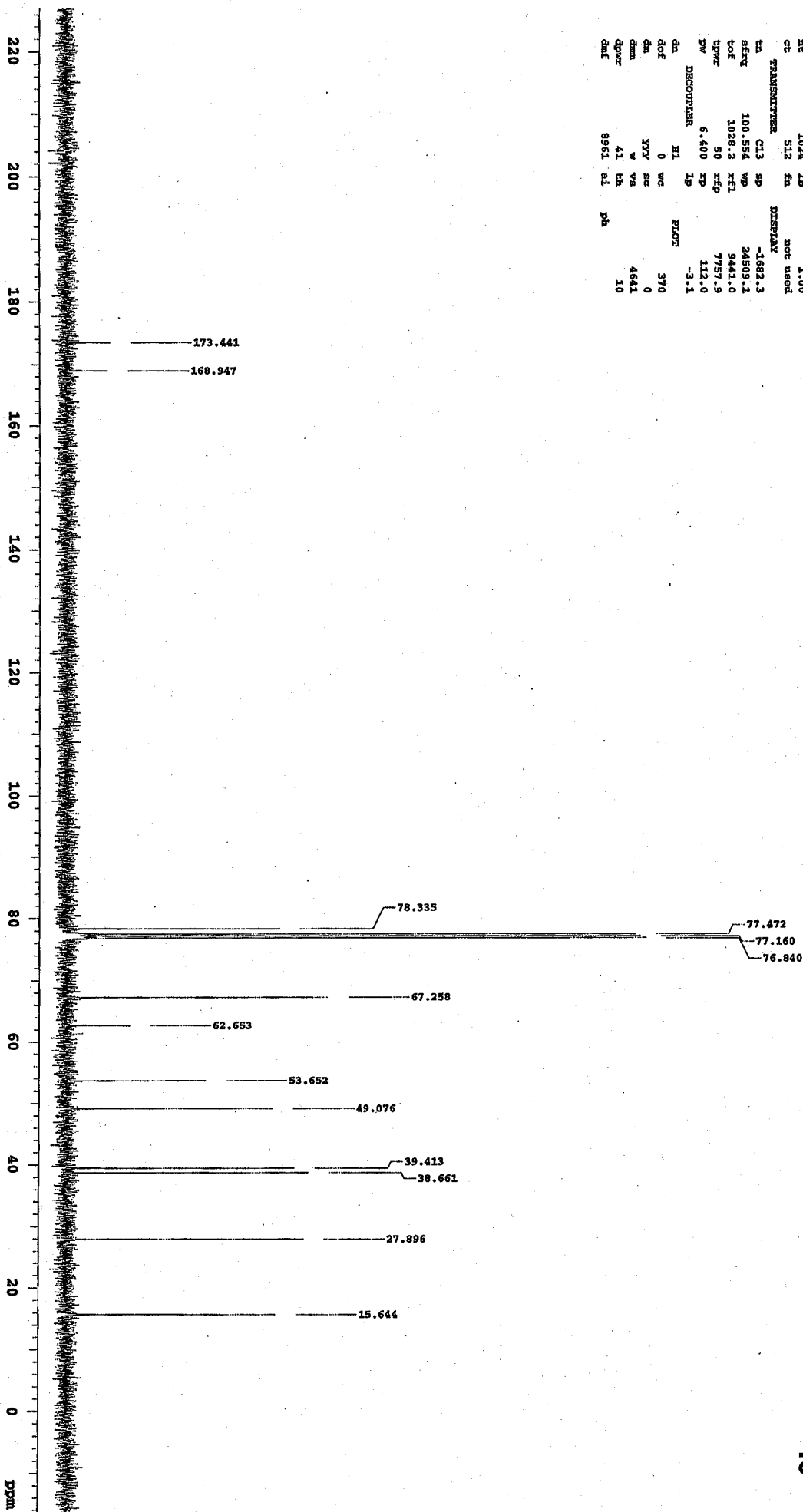
date	Jan 11 2011	temp	not used
solvent	cdcl3	gain	not used
file	/media/____/US- spin	16	
R/mnr	/Korell/2011_0- bat	0.008	
L1_P-ENR	pw90	14.000	
ACQUISITION	/ sifa	10.000	
sw	6410.3	ftms	x
at	3.500	fl	x
np	44872	fn	x
fb	4000	dp	y
bs	32	bs	na
d1	1.500	PROCESsing	na
nt	32	lp	0.20
ct	32	fa	not used
TRANSMITTER		DISPLAY	
tn	H1	sp	-200.1
efrq	399.855	vp	3398.6
cof	399.9	refl	3704.0
cpwr	59	kfp	2902.9
pw	7.000	cp	37.7
DECODER		lp	24.3
dn	C13	ELOR	
dof	0	vc	370
dm	max	sc	0
sum	c	vs	206
opwr	41	th	
date	29412	at	cdcl3
		ph	12



esp1 Carbon

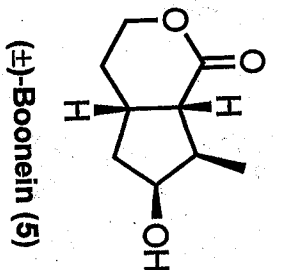
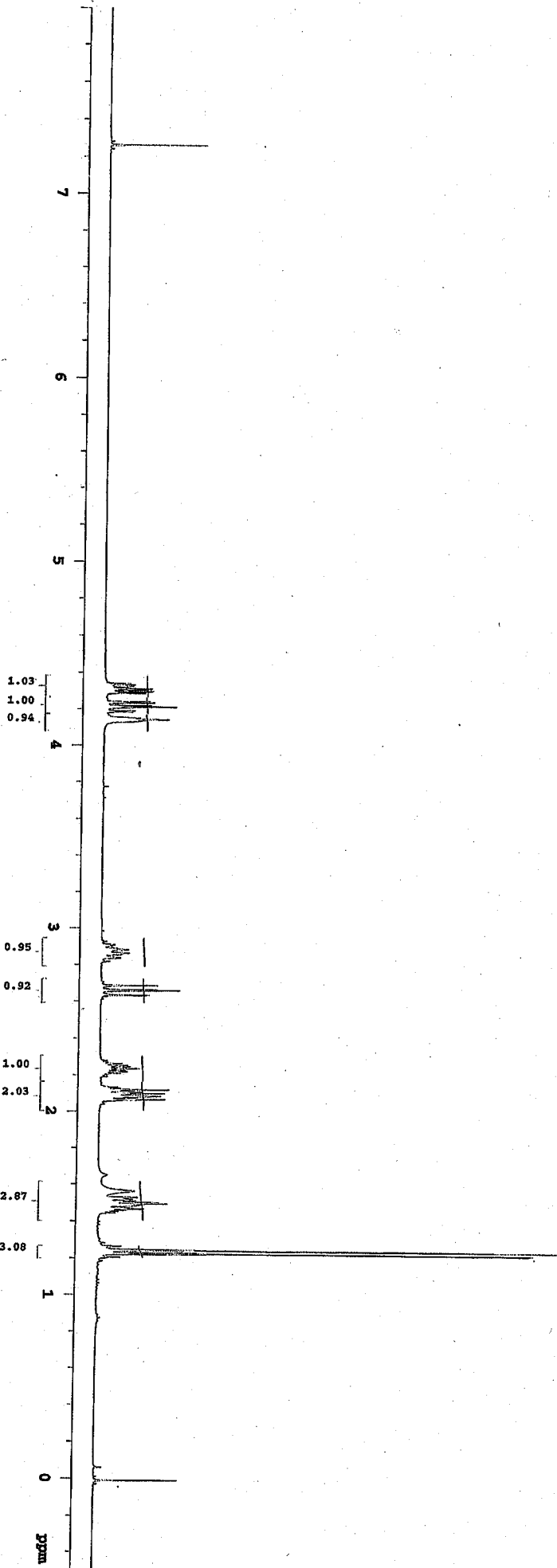
SPECTRA

date Jan 11 2011 temp not used
solvent cdcl3 gain not used
file /media/ VS- spin 16
B/mm/Kawali/c13/20- bar 0.008
11_01_11_c+fid pw90 12.800
ACQUISITION files 10.000
sw 24509.8 FLAGS
at 1.300 11 n
np 63750 1n n
fp 17000 dp y
bs 64 bs PROCESSING m
dl 0.700 1b 1.00
xt 1024 1b not used
ct 512 fn
TRANSMITTER DISPLAY
ta C13 sp -1682.3
seq 100.554 vp 24509.1
cof 1028.2 rfl 9441.0
pwz 50 kfp 7757.9
pv 6.400 kp 112.0
DECOUPLER H1 1p -3.1
dn 0 wc 370
dof 0 wv 0
dm YXY sc 0
dm v vs 4641
dprz 41 kb
dnt 8961 rl 10 pA



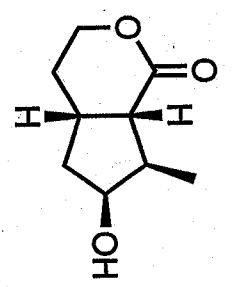
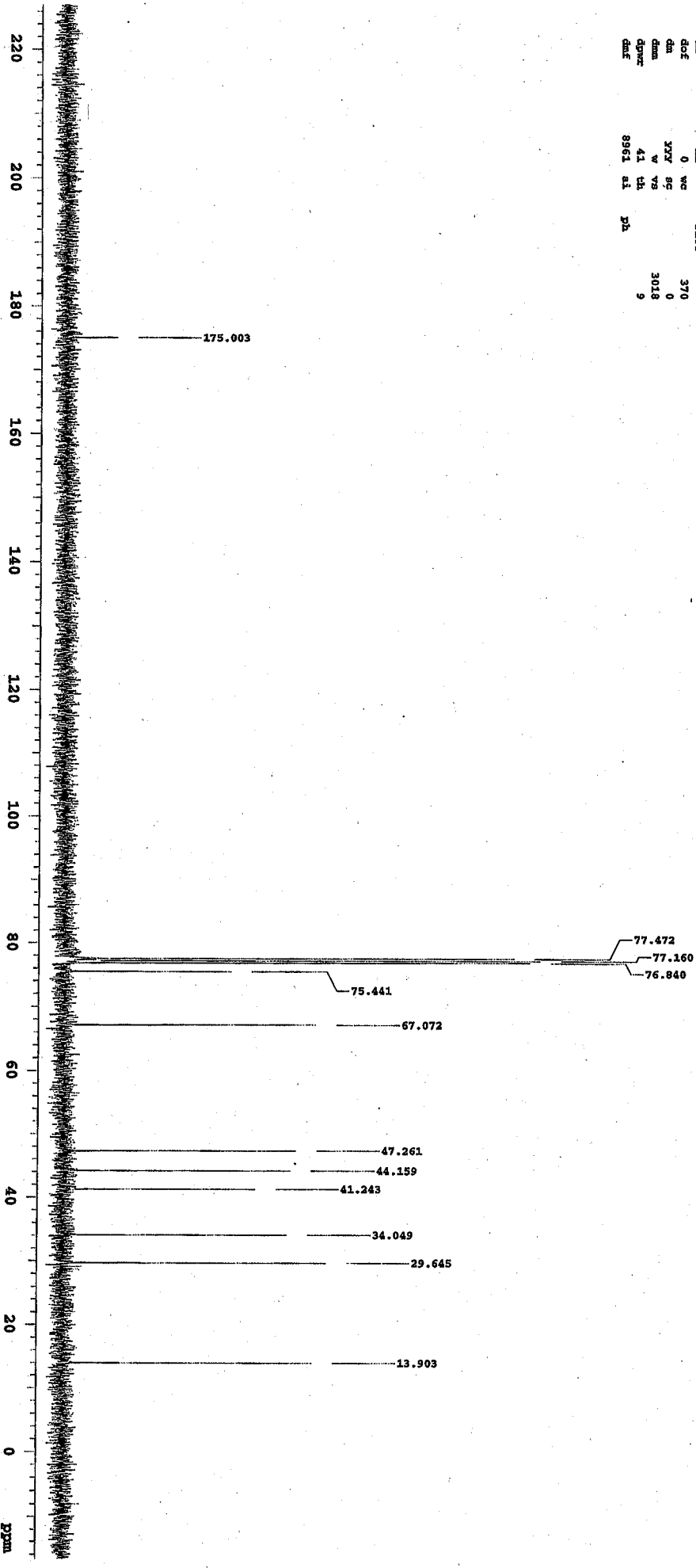
exp1 52cm1

DATE	Dec 17 2010	TEMP	not used
SOLVENT	cdcl3	GRAV	not used
FILE/MEDIA/	VS-SP1A	SPIN	16
R/MIN/KWVAL/2010.1	hst		0.008
2.17	c-fid	DW90	14.000
ACQUISITION	ALFA		10.000
SW	6410.3	PHAS	
AT	3.500	IL	X
AP	44872	IA	X
BP	4000	DP	Y
BS	32	HS	NA
DL	1.500	PRO	NA
NT	16	IB	0.20
CT	16	FA	not used
TRANSMITTER		DISP	
TA	H1	SP	-200.1
SETE	399.895	WD	3398.6
LOF	399.9	FEI	3701.8
UPWR	59	RF	2902.9
PW	7.000	RP	-134.8
DECOUPLER	1P		11.4
DA	C13	PROR	
ACQF	0	WC	370
GM	MM	SC	0
DMN	C	VS	162
QWZ	41	TA	
DMF	29412	SI	cdc
		PH	12



9991 Carbon

SAMPLE SPECIMN
 date Dec 17 2010 temp not used
 solvent cdcl3 gain not used
 file /addis/... us- sp1a 16
 B/mm/Resend/013/20- hsc 0.008
 10.12.17.C-414 pw90 12.800
 ACQUISITION s15a 10.000
 SW 24509.8 FLAGS
 at 1.300 I1 n
 xp 63750 I1 n
 fd 17000 Gp Y
 bs 64 hs PROCESSING mn
 fl 0.700 1b
 nt 1024 1b 1.00
 ct 0 ft not used
 TRANSMITTER DISPLAY
 tu C13 sp -1582.3
 freq 100.584 wp 24509.1
 cof 1028.2 xfl 9441.0
 cpwr 50 kcp 7757.9
 pw 6.400 xp 124.3
 DECOUPLER 1p -7.9
 da HI 1p PLOW
 dof 0 wc 370
 da XY 9c 0
 dm v vs 3018
 opwr 41 vk 9
 gmf 8961 sl DA



(±)-Boonein (5)

expt 82p01

date	Feb 17 2011	temp	not used
solvent	acetone d6	spin	not used
file	/home/walshp/~spin	spin	16
nmrprog	data/teproc-hsc	hsc	0.008
a_lab	Rawel/2011_0-pw90	hsc	14.000
a_17	a.fid	hsc	10.000

ACQUISITION

sw	6410.3	il	n
at	3.500	ia	n
ap	44872	dp	y
fd	4000	hs	nm
bs	32	ps	nm
d1	1.500	lb	0.20
nt	32	en	not used
ct	32	display	

TRANSMITTER

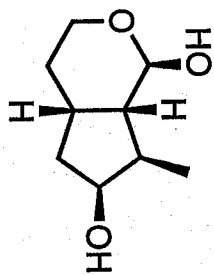
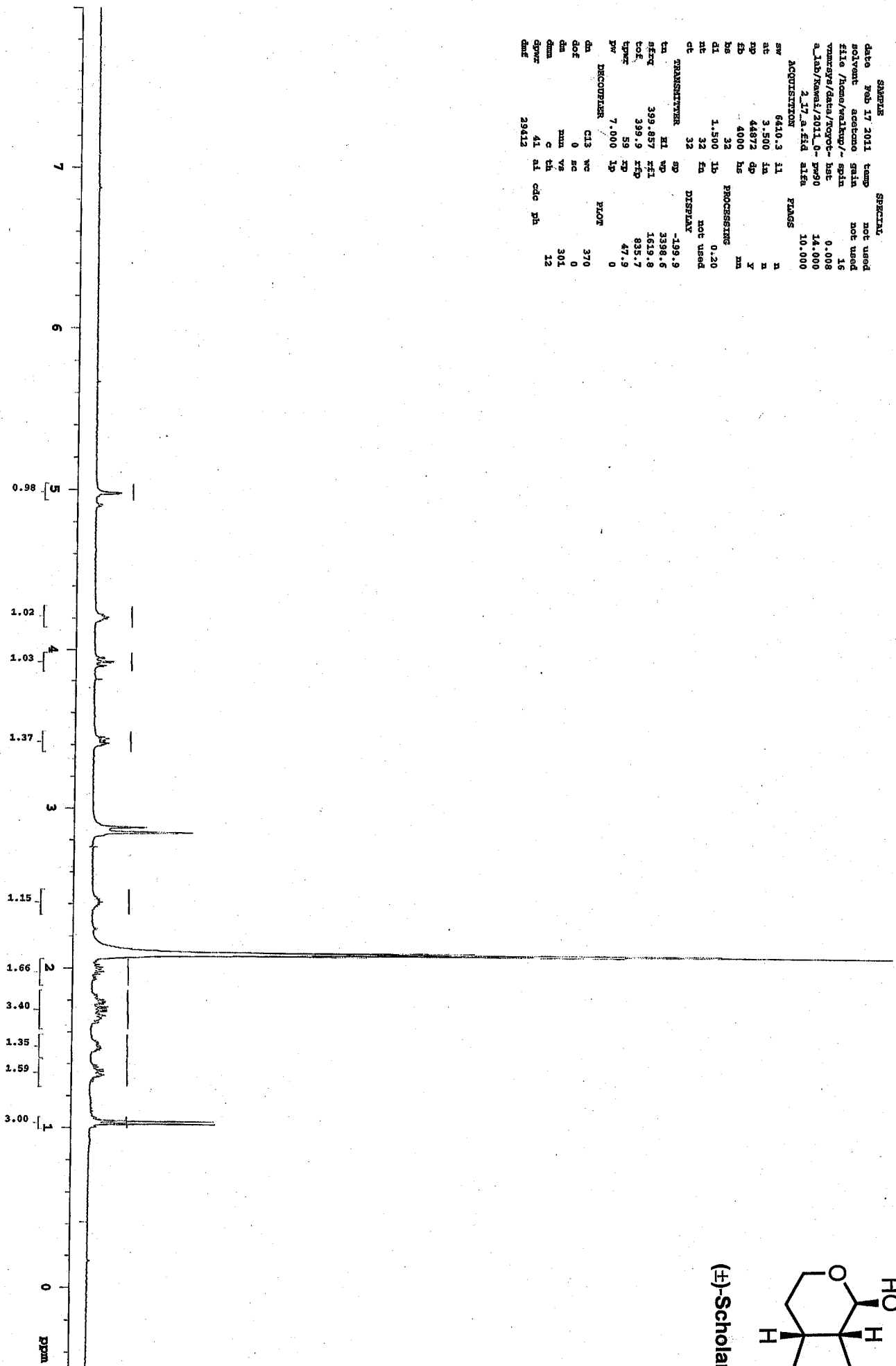
tn	H1	wp	-199.9
gfreq	399.857	zfl	3398.6
lock	399.9	xrp	1619.8
tpwr	59	zr	835.7
pw	7.000	lp	47.9

DECOUPLER

dn	C13	wc	FLOW
dot	0	sc	370
dm	0	vg	0
dmm	c	tn	301
dprc	41	sl	12
dwt	29412	cdc	ph

SECTIAL

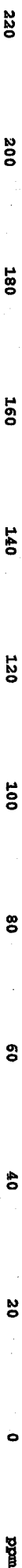
date	Feb 17 2011	temp	not used
solvent	acetone d6	spin	not used
file	/home/walshp/~spin	spin	16
nmrprog	data/teproc-hsc	hsc	0.008
a_lab	Rawel/2011_0-pw90	hsc	14.000
a_17	a.fid	hsc	10.000



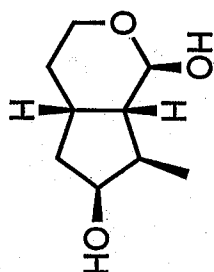
(±)-Scholarein C (3)

expt1 Carbon

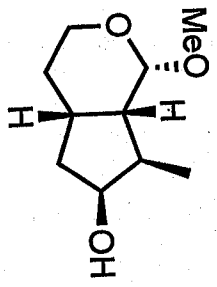
SAMPLES SPECTRAL
date Apr 4 2011 temp not used
solvent cdcl3 gain not used
file /home/veling/- sp16
parameters/data/ncycr- hart 0.008
a_lab/kemal/130/20- pw90 13.800
11_04_04_a_fid a1fa 10.000
ACQUISITION PHASES
sw 24509.8 11 n
at 1.300 1a n
mp 63750 6p y
fb 17000 1a m
bs 64 PROCESSING
dl 0.700 1b not used
hl 1024 4a
nt 64 DISPAR
ct 59 -2128.7
TRANSMITTER C13 WP 24509.1
ln 100.554 wfl 5129.6
freq 1028.2 k6p 3000.2
type 50 2p -128.1
pw 6.400 1p 0
DISCUSS
da HI WC F2OF 370
doe 0 sc 0
dm XYY VS 1289
dum v th 6
dprc 41 at ph
date 8961



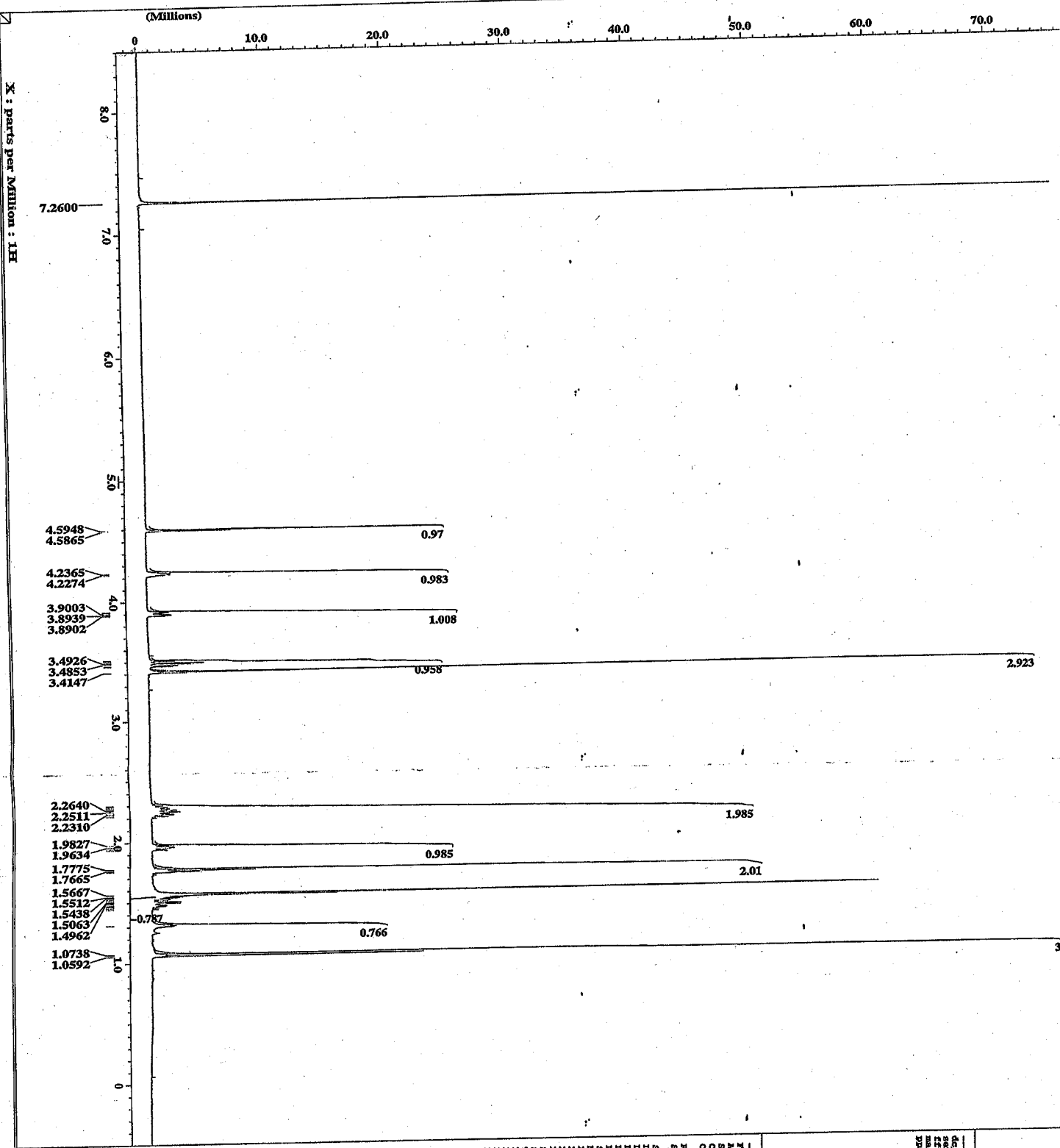
(±)-Scholarein C (3)



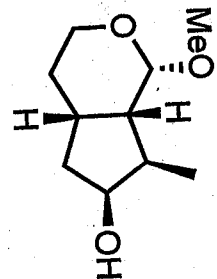
PROCESSING PARAMS
 de balance
 exp = 1.0 (Hz)
 machinaphase
 ppm



ACQUISITION PARAMS
 File Name = IR-00
 Author ID = SM14
 Sample ID = SH01
 Exp. No. = 14-008-2011 09:57:17
 Creation Date = 14-008-2011 09:57:17
 Revision Date = 14-008-2011 09:58:08
 Spec Size = 32750
 Spec Type = DATA_NMR
 Data Format = ID CONSTAT
 Dimension = 1
 Num Sols = 1
 Num Sigs = 16384
 Num Dets = 1 ppm
 Scans = 9
 Acq. System = 1H
 X_offset = 51.000
 X_freq = 500.132416021[MHz]
 X_sweep = 7.50750751 [Hz/s]
 SOLVENT = DMSO-d6
 Temp. degC = 21.2 [C]
 Rfctz. gain = 30
 Field_strength = 11.747379 [T]
 Filter_name = 31PZP300
 Filter_freq = 3.7513936 [MHz]



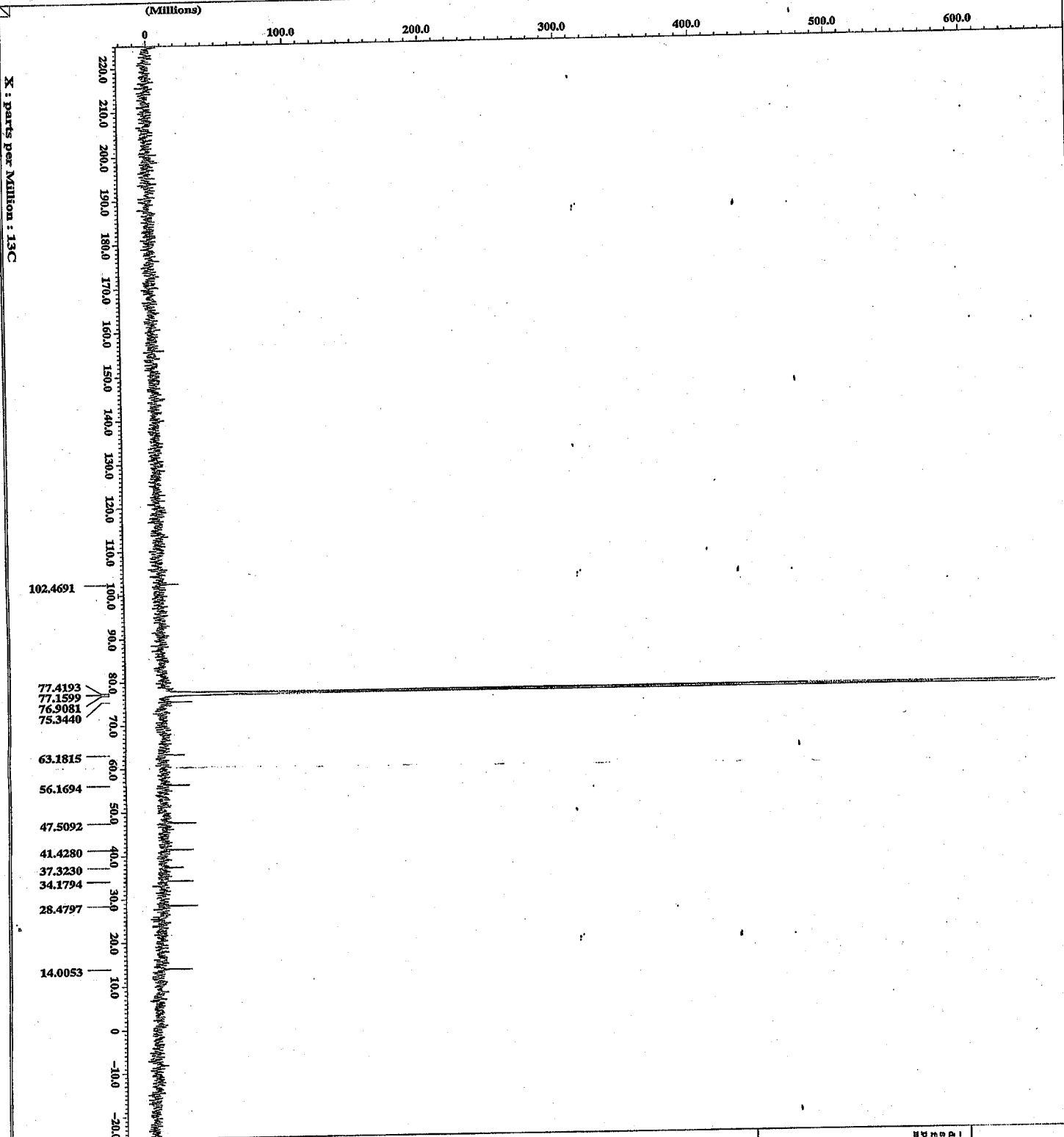
4.1.3 PROCESSING PARAMETER
 SAMP : 51Bz1
 SEC : 1
 YPM
 MultiInPhase



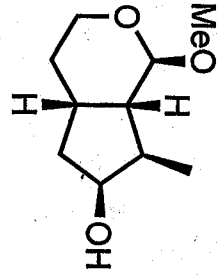
14

ACQUISITION PARAMETER
 File Name = 14_13c
 Sample ID = 5822776
 Content = Single *user* with preset
 Creation Date = 14-JUN-2011 13:39:18
 Acquisition Date = 14-JUN-2011 06:57:09
 Spec Site = KX500

Spec Type = 1D NMR
 Data Format = 1D COMPACT
 Num Files = 14
 Num Sites = 32768
 Num Units = 1920
 Scan = 1024
 X Pos = 13c
 X Offset = 180 Hz
 X Freq = 125.777847 MHz
 X Name = CHM0000000
 Soln. set = 171Bz1
 Temp. set = 23.7 [dC]
 Recv. Gain = 30 2473279 [V]
 Pres. Strength = 800000000
 Filter = 15.7206221 [Hz]



X : parts per Million : 13C

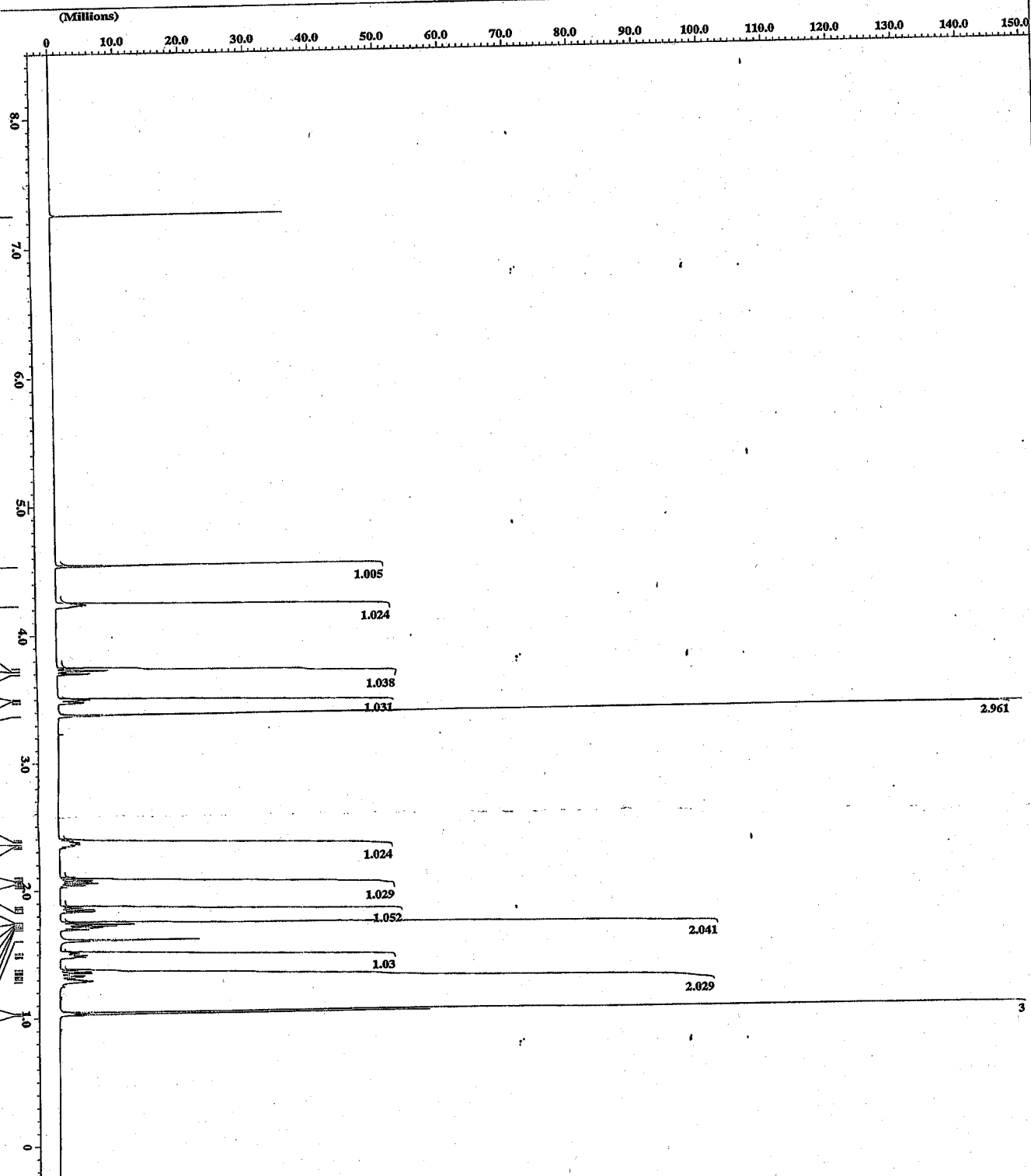


(±)-Scholarlein D (4)

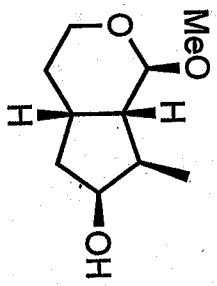
PROCESSING PARAMETERS
 Gc Balance = 0.21[us]
 Sample Weight = 1.4
 methoxyphospho
 ppm

ACQUISITION PARAM
 File Name = IR-son
 Author =
 Sample ID = S82481
 Sample Name =
 Collection Date = 14-JUN-2011 16:27:07
 Revision Date = 17-JUN-2011 09:46:22
 Spec Site = X00900

Spec Type = 1D NMR
 Data Format = 1D CONTIN
 Dimensions = X
 Num Fids = 1284
 Num Dets = 1
 Num Sca = 16
 Num Scans = 1
 Num Retun = 1
 X_Center = 11.000000
 X_Scale = 500.16241602 [Hz/1
 X_Freq = 7.50750751 [MHz]
 Solvent = CDCl3
 Spin_90 = 11.000000
 Spin_180 = 23.000000
 Report_Path =
 Field_Strength = 11.7473579 [T]
 Filter_Mode = HETCORWATER
 Filter_Width = 3.75193581 [kHz]



X : parts per Million : 1H

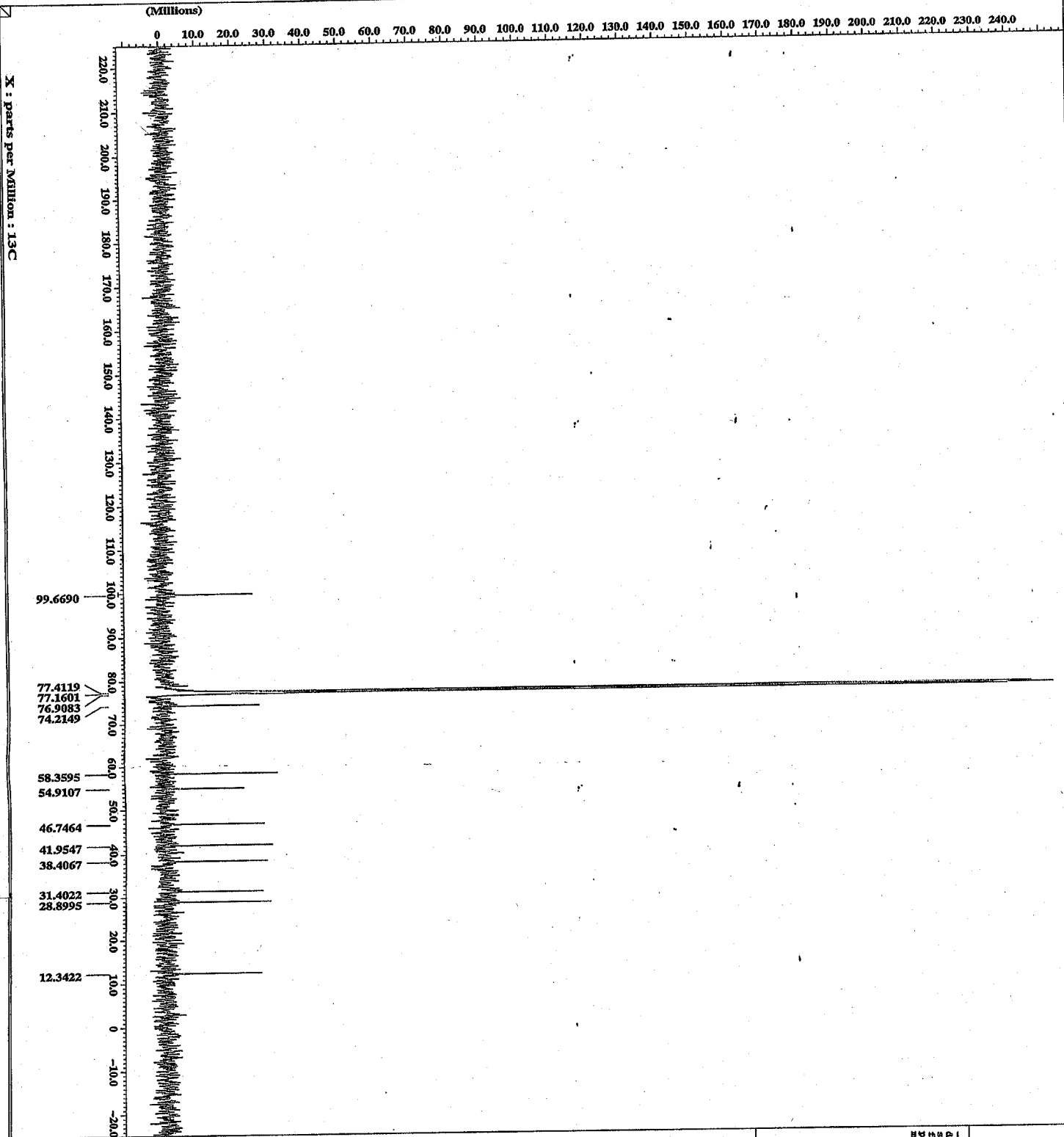


(+)-Scholarein D (4)

===== PROCESSING PARAMETERS
de balance
samp : 5 [kg]
int : 1
Methylophase

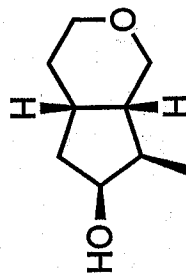
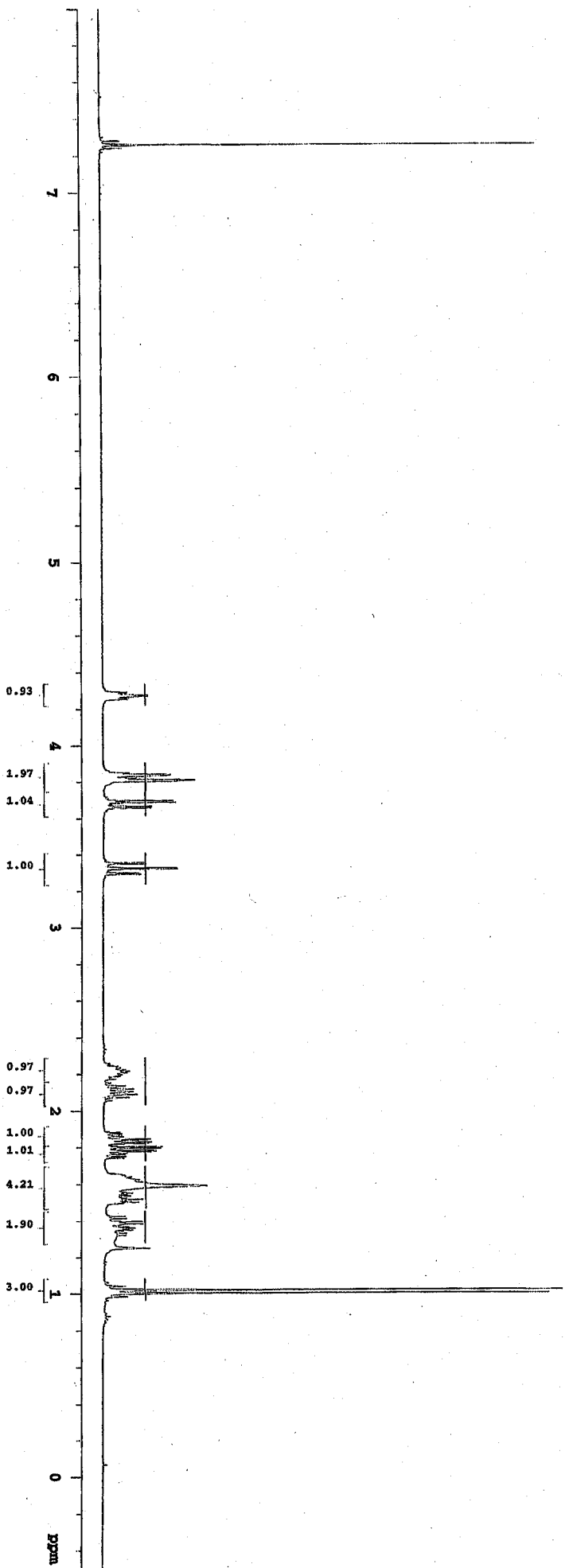
===== ACQUISITION PARAMETERS
File name = 34_13c_1
Author =
Sample ID = S8350361
Content = Single I
Creation Date = 18-09-2
Revision Date = 17-09-2011 10:01:06
Spec Site = K03500

=====
Spec type = HYPER NMR
Date Acq = 18-09-2011
Dimensions = X
Diam Vial = 13C
Diam Siles = 32768
Scan = 400
Solv =
Solv_name =
K_min = 13C
K_max = 100 [ppm]
K_center = 77.547 [ppm]
K_freq = 31.4464088 [MHz]
SOLVENT = CHLOROFORM-D
Solv_wgt = 16 [Hz]
Solv_gwt = 28.1 [kg]
Solv_vol =
Field strength = 11.7473579 [kV]
Filter mode = HYPERNOVA
Filter width = 15.7206221 [ppm]



exp1 s2p01

SAMPLE		SPECTRAL	
date	011 2 2011	temp	not used
solvent	cdcl3	spin	not used
file	/home/walshp/~sp1a	is	16
nmrprog	data/Toproc-hat	0.008	
a_jab/kawal/2011_0--p090		14.000	
	7.02 a.fid	10.000	
		10.000	
ACQUISITION		FLAGS	
sw	6410.3	il	a
at	3.500	in	n
np	4872	cp	y
eb	4000	hs	nm
bs	32		
d1	1.500	1p	0.20
nt	32	en	not used
ct	32	displax	
TRANSFORMER		sp	-200.1
ta	hl	wd	3398.6
sfreq	399.855	xf1	3702.0
tof	399.9	xfp	2902.9
lppcr	59	xp	20.7
pw	7.000	1p	4.5
DECOUPLER		elcor	
da	cl3	vc	370
dot	0	sc	0
dm	mm	vs	734
dmm	c	th	12
dppcr	41	sl	cdc
date	29413	ph	



(±)-Scholarein A (1)

