

MOSHER'S AMIDE-BASED ASSIGNMENT OF THE ABSOLUTE CONFIGURATION OF PHANTAMSIDINE

Quan Zhou and Barry B. Snider*

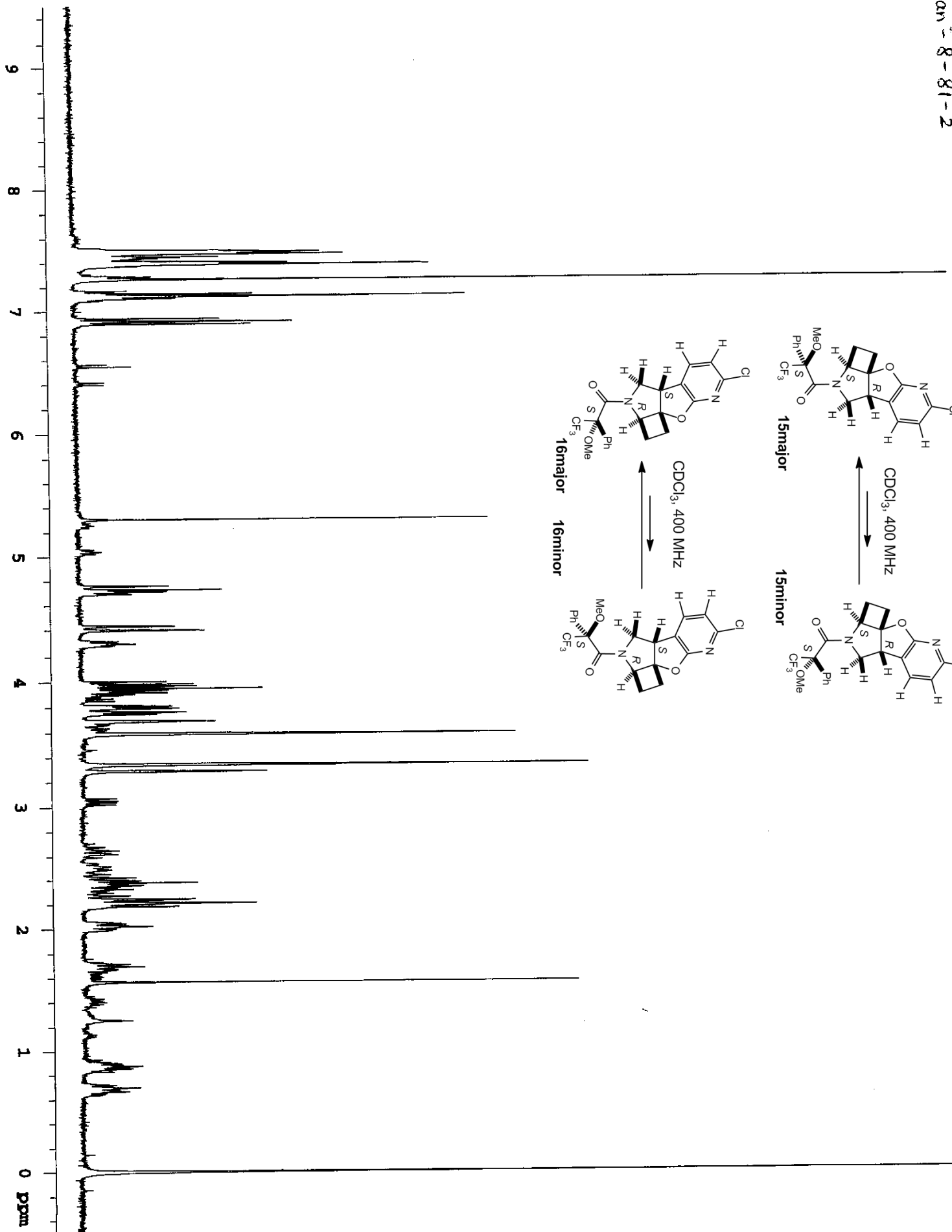
Department of Chemistry MS 015, Brandeis University, 415 South Street, Waltham,

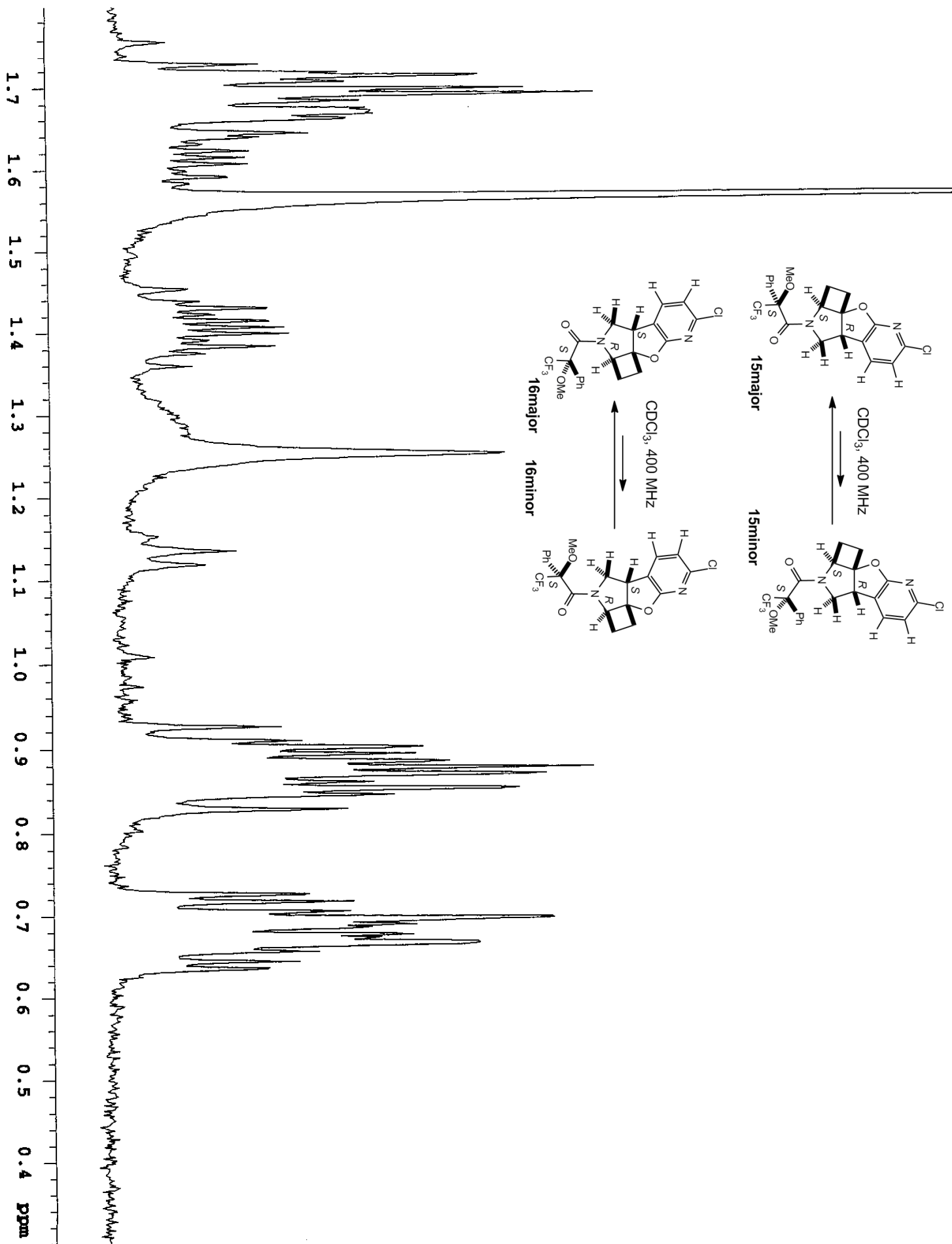
Massachusetts 02454-9110, USA; E-mail: snider@brandeis.edu

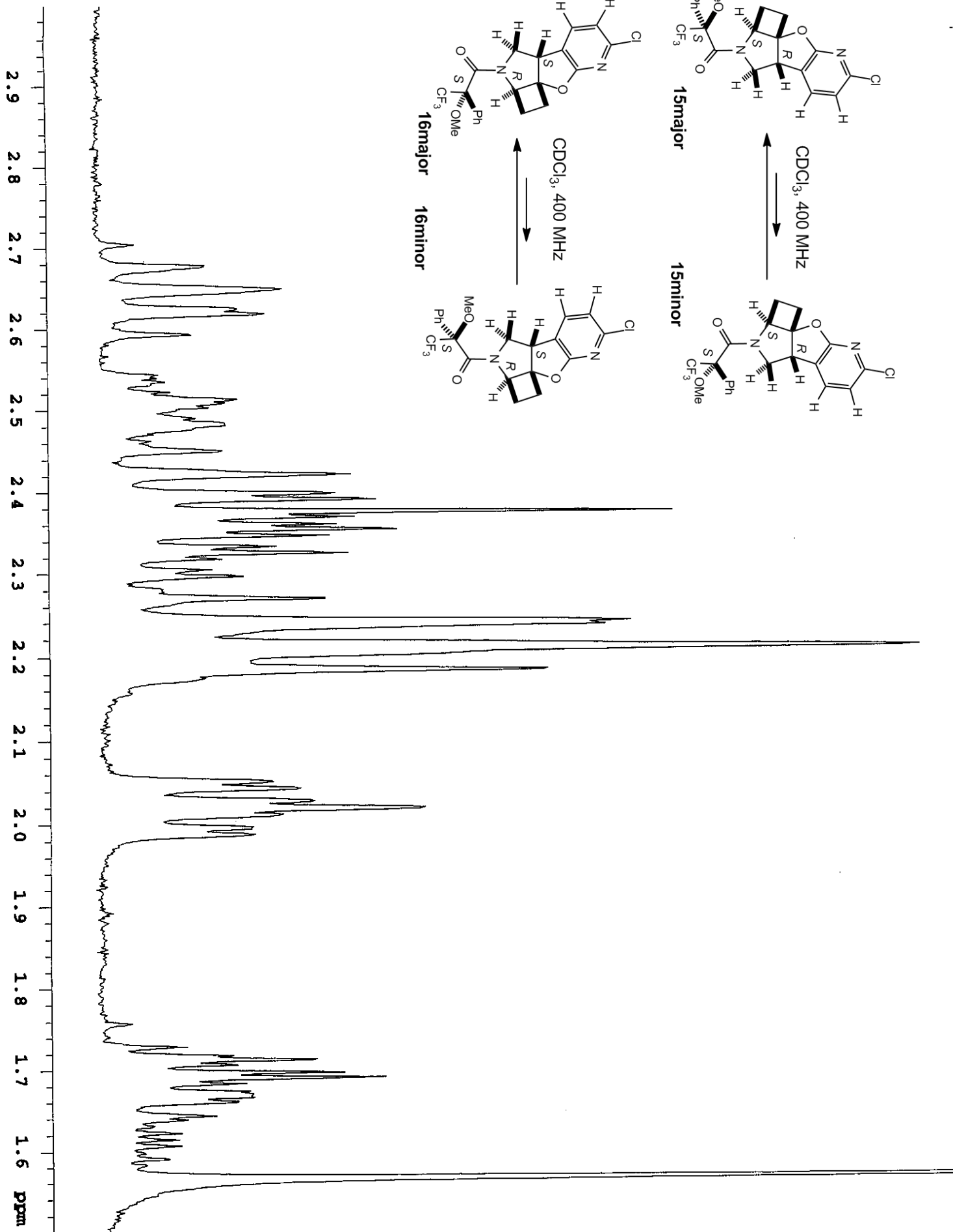
Table of Contents

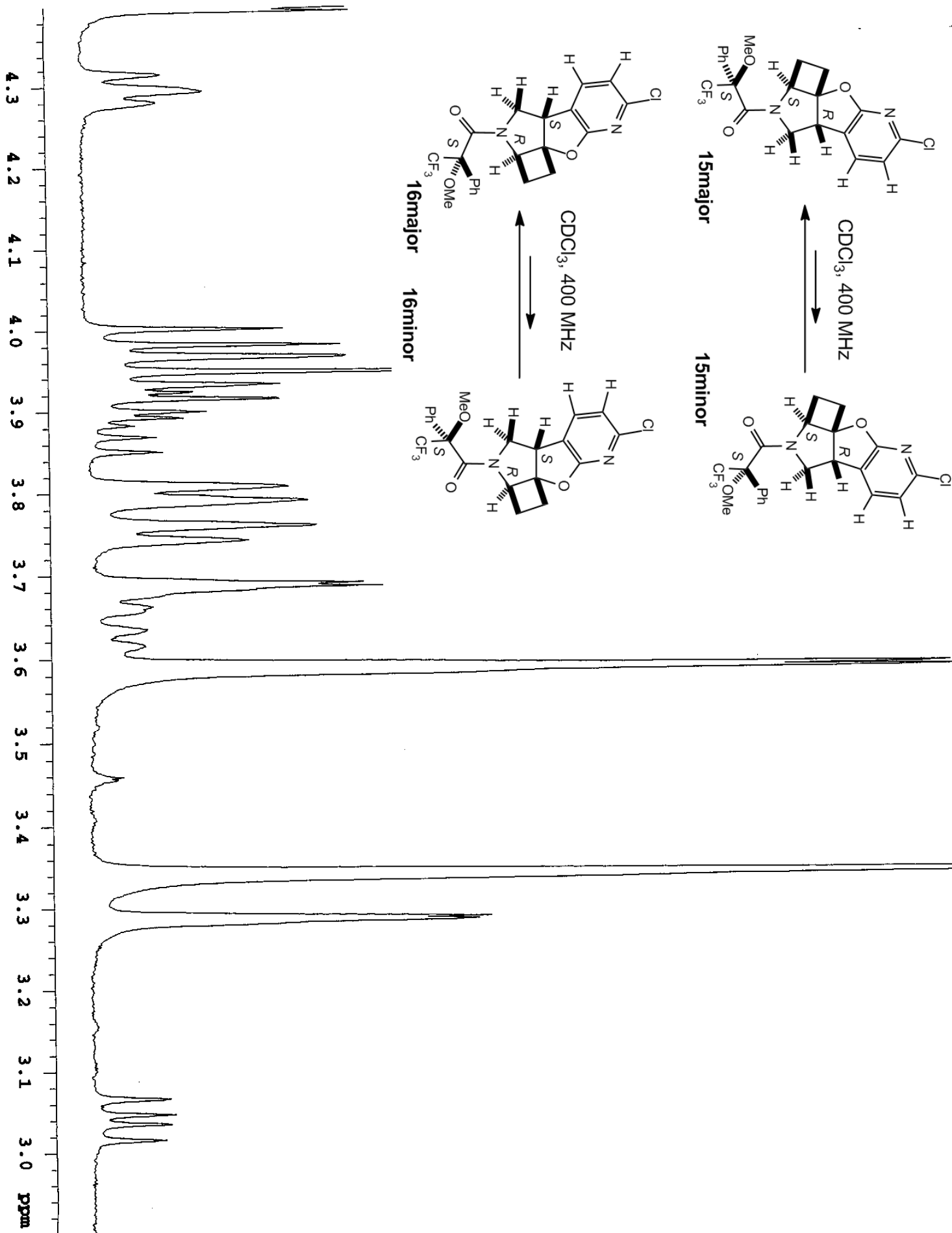
¹ H NMR Spectra of a Mixture of Pure Mosher Amides 15 and 16	S2-7
COSY NMR Spectra of a Mixture of Pure Mosher Amides 15 and 16	S8-9
¹ H NMR Spectra of Impure Mosher Amide 15	S10-15
¹ H NMR Spectra of Impure Mosher Amide 16	S16-21

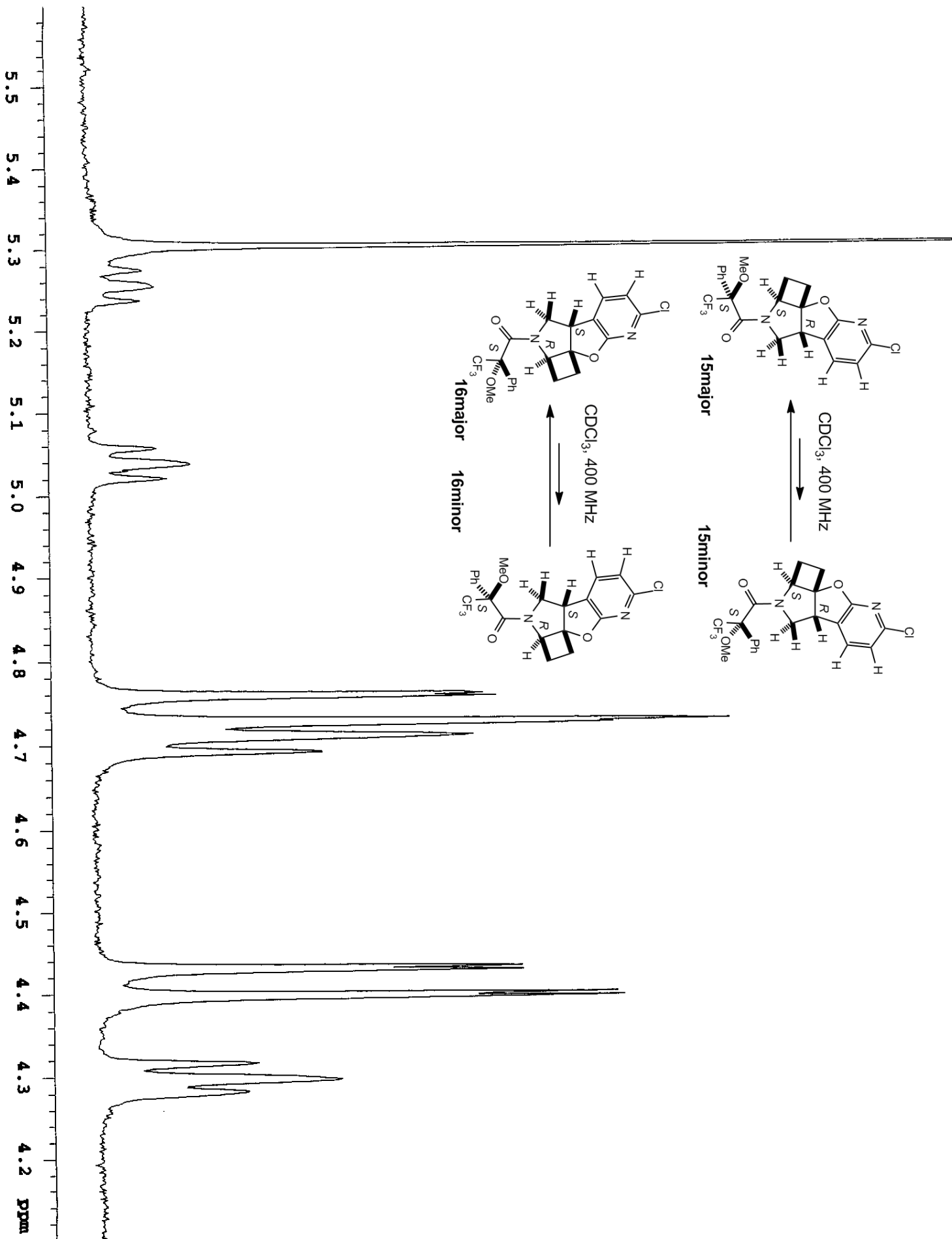
Quan-8-81-2

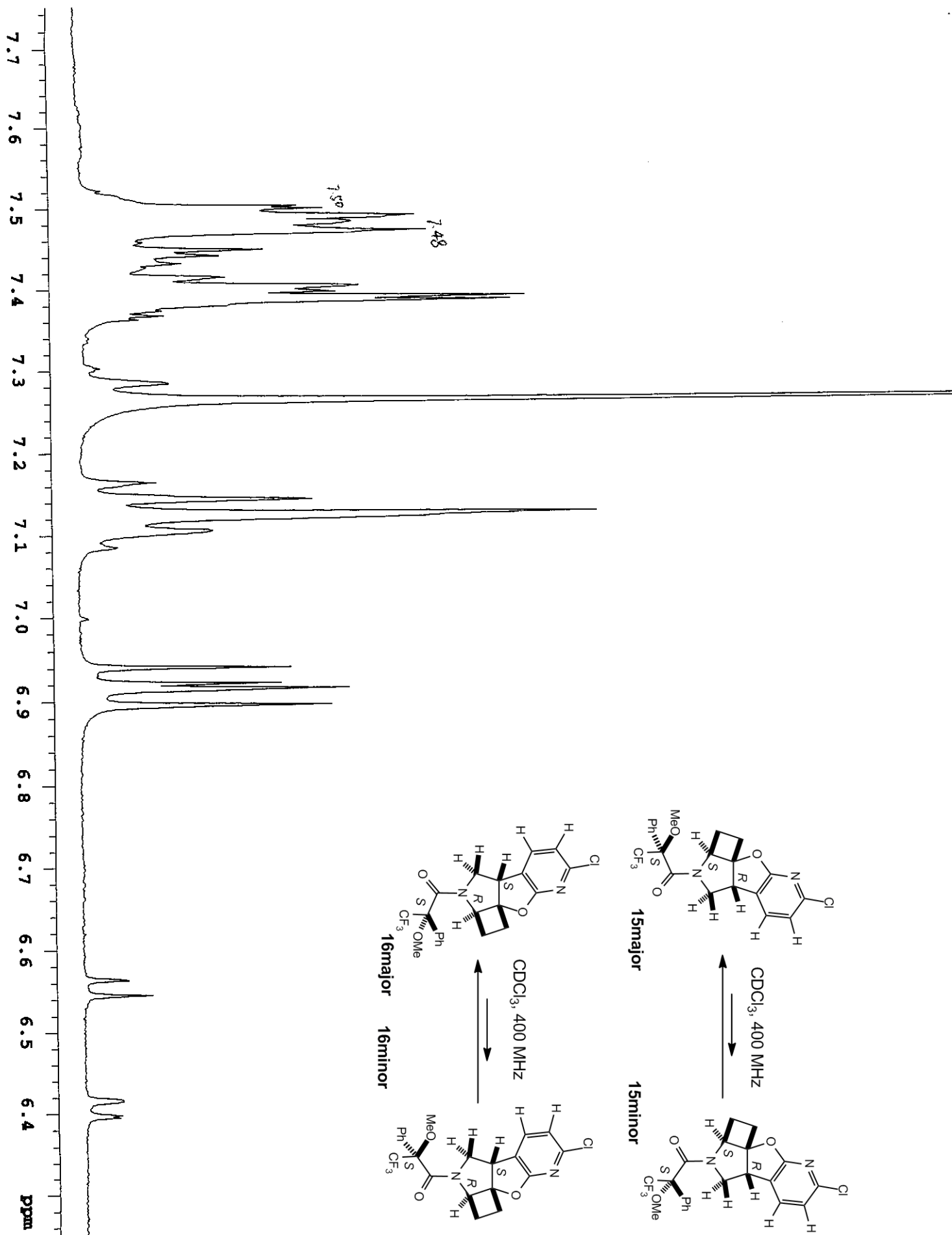












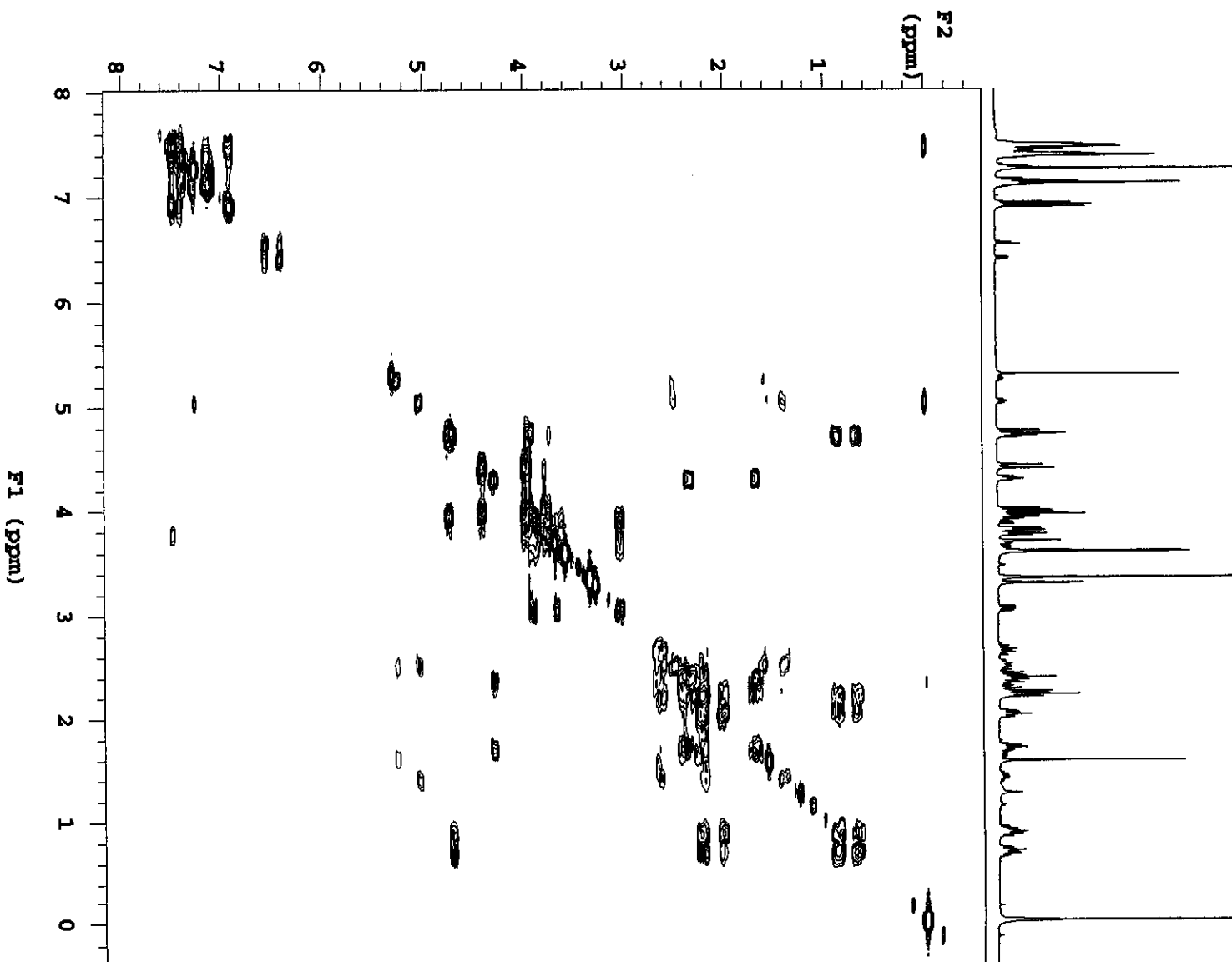
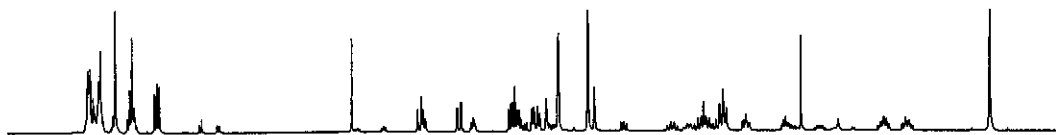
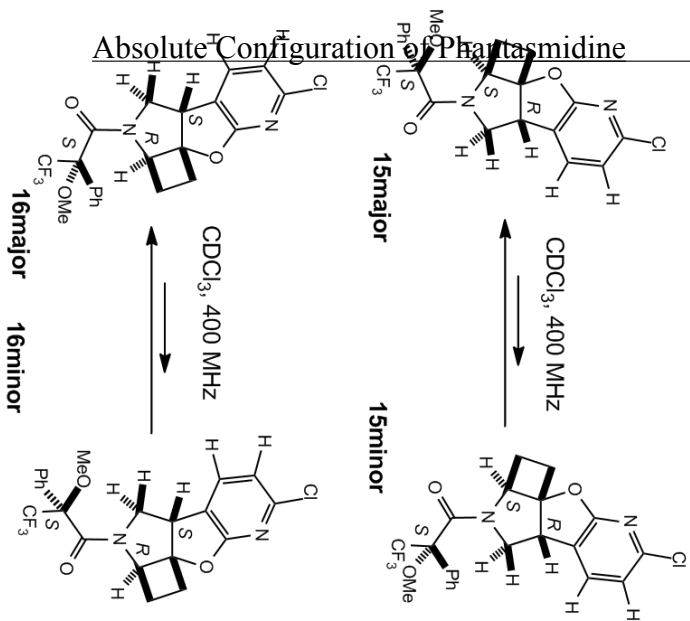
STANDARD 1H OBSERVE

Pulse Sequence: gCOSY
 Solvent: CDCl3
 Ambient temperature
 File: Quan-8-81-2-cosy
 INOVA-400 "cosy"

Relax. delay 1.000 sec
 Acq. time 0.205 sec
 Width 5000.0 Hz
 2D Width 5000.0 Hz
 4 repetitions
 256 increments
 OBSERVE H1, 399.7858074 MHz
 DATA PROCESSING
 Sg. sine bell 0.102 sec
 F1 DATA PROCESSING
 Sg. sine bell 0.026 sec
 FT size 2048 x 2048
 Total time 0 min, -1 sec

Absolute Configuration of Phantasmidine

Zhou and Snider



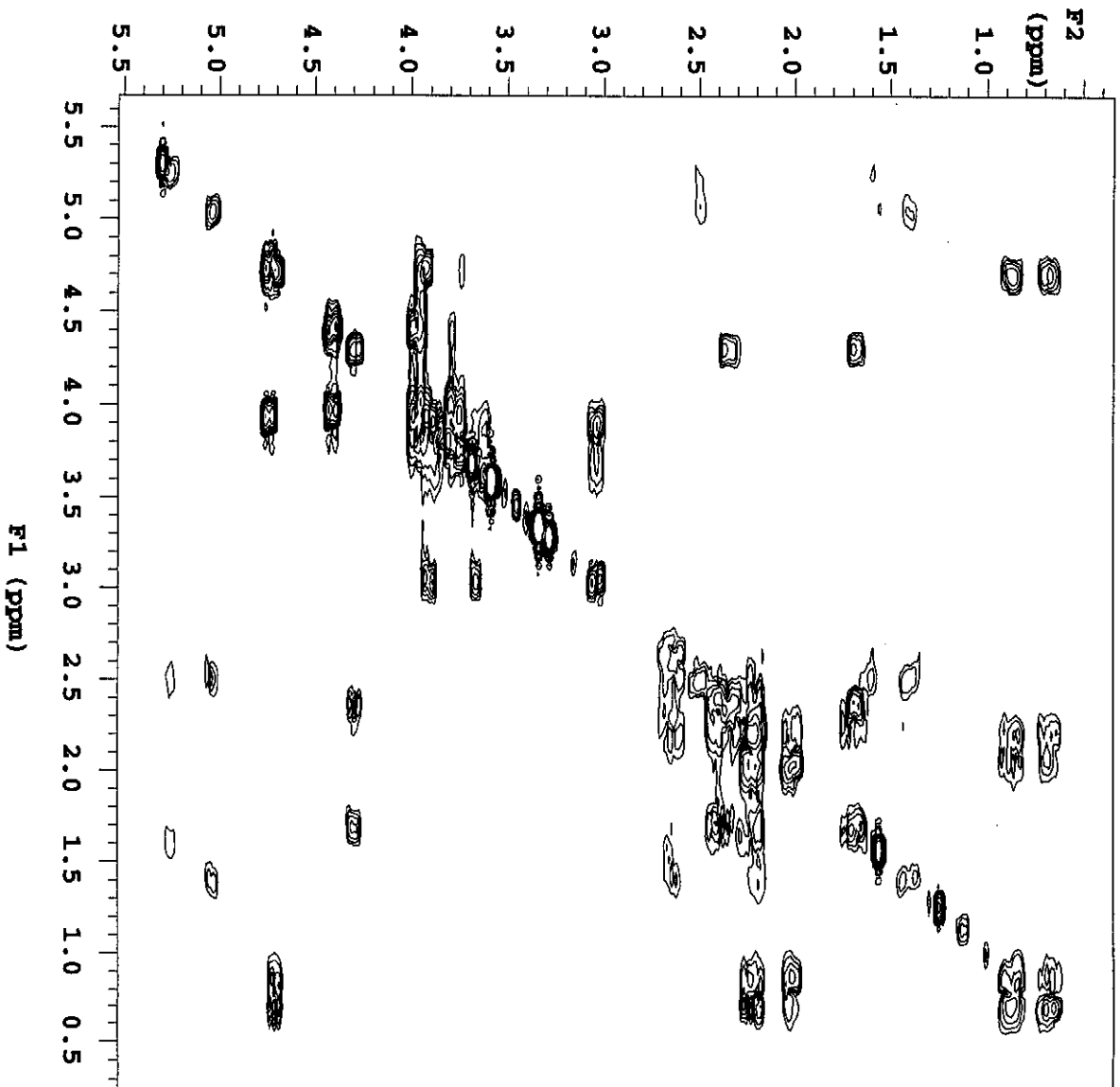
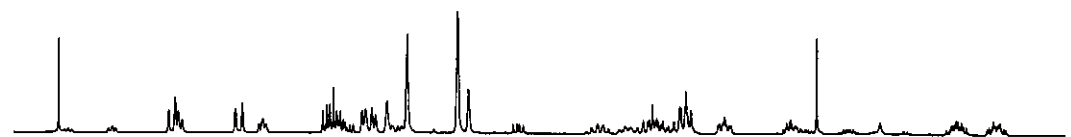
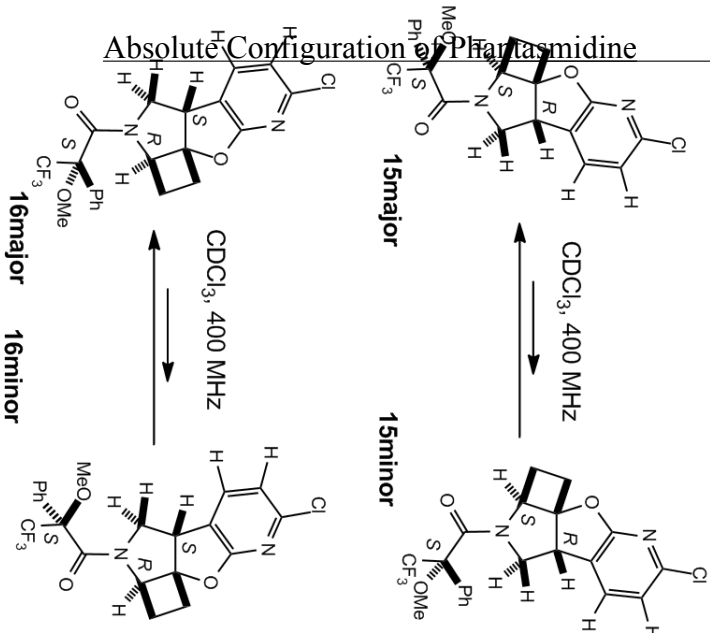
STANDARD 1H OBSERVE

Pulse Sequence: gCOSTY
Solvent: CDCl3
Ambient temperature
File: Quan-8-81-2-cosy
INOVA-400 "cosy"

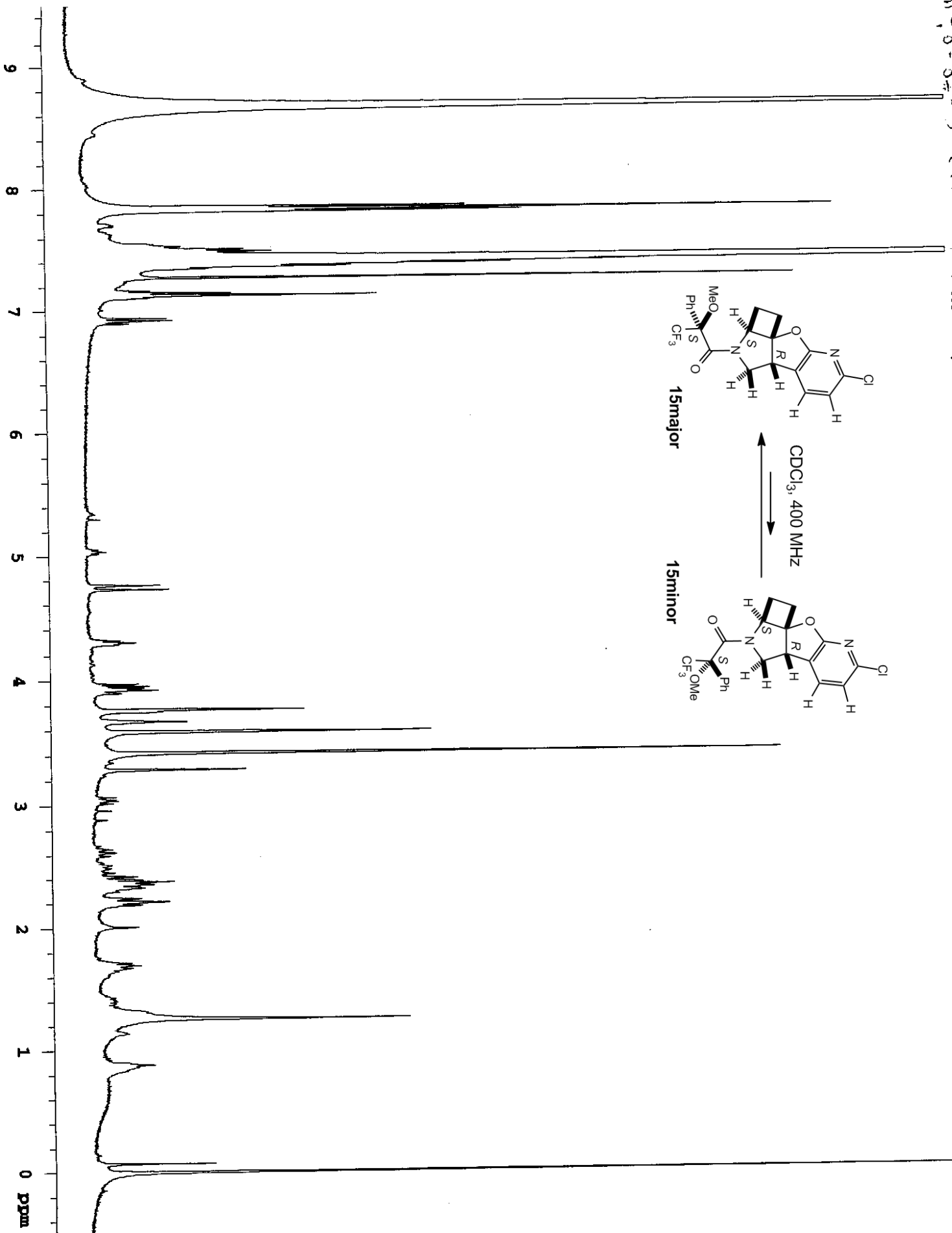
Relax. delay 1.000 sec
Acq. time 0.205 sec
Width 5000.0 Hz
2D Width 5000.0 Hz
4 repetitions
256 increments
OBSERVE H1, 399.7858074 MHz
DATA PROCESSING
Sd. sine bell 0.102 sec
F1 DATA PROCESSING
Sd. sine bell 0.026 sec
F1 size 2048 x 2048
Total time 0 min, -1 sec

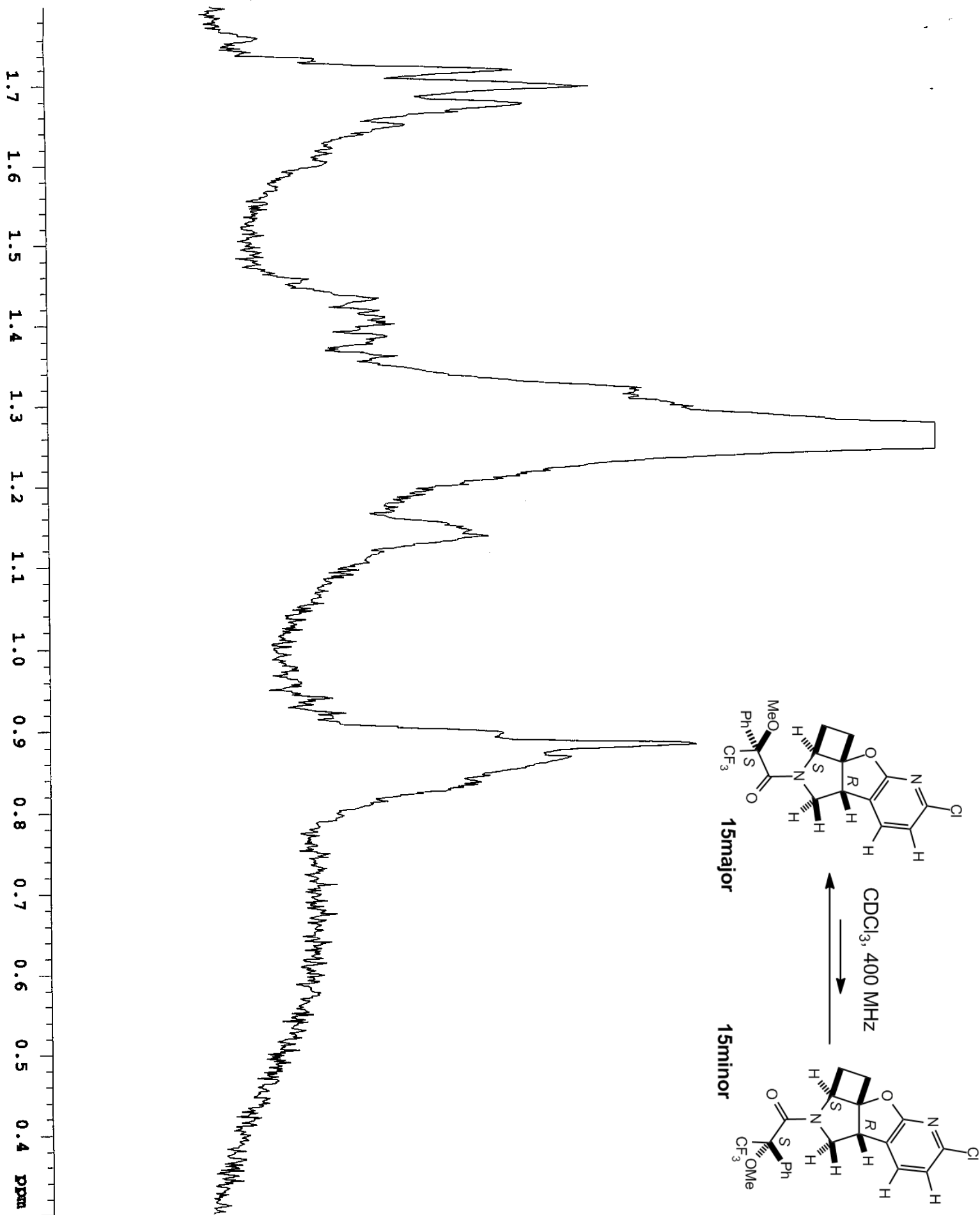
Absolute Configuration of Phantasmidine

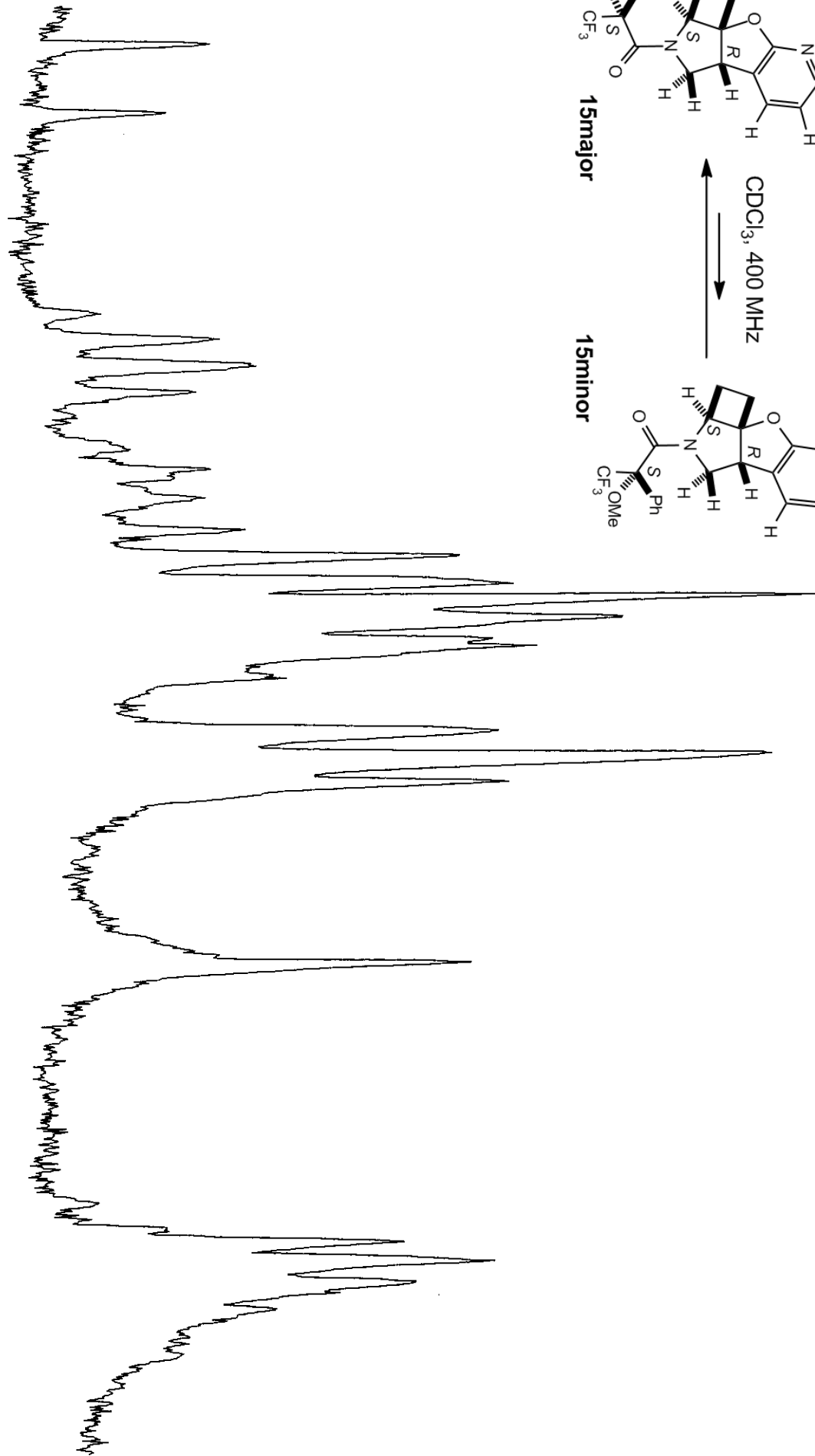
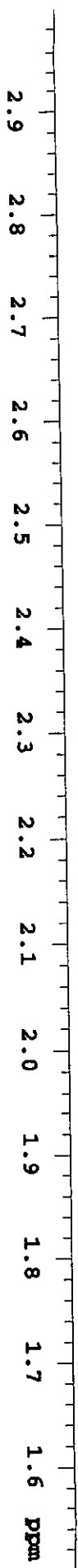
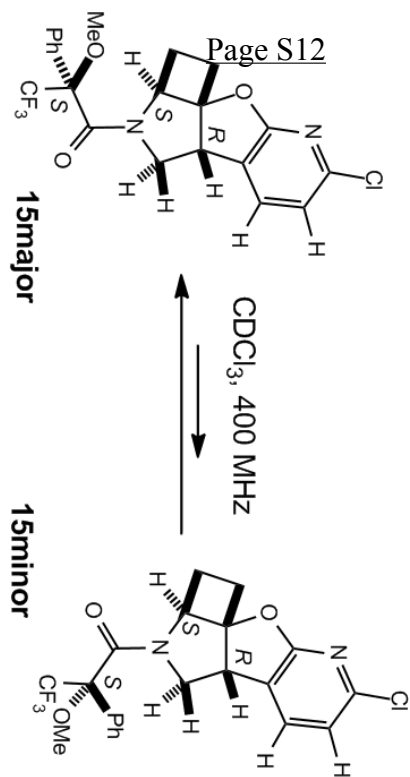
Zhou and Snider

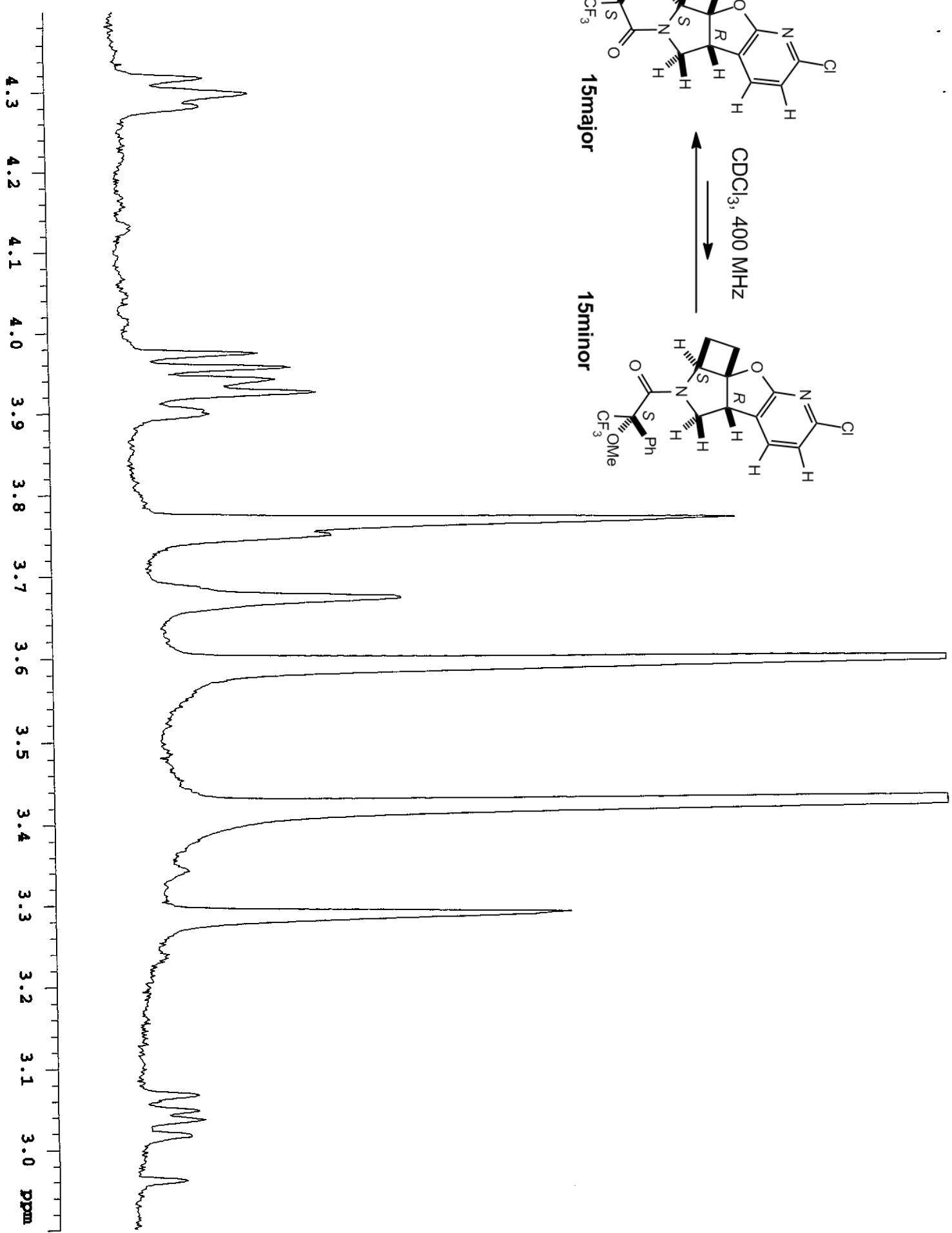
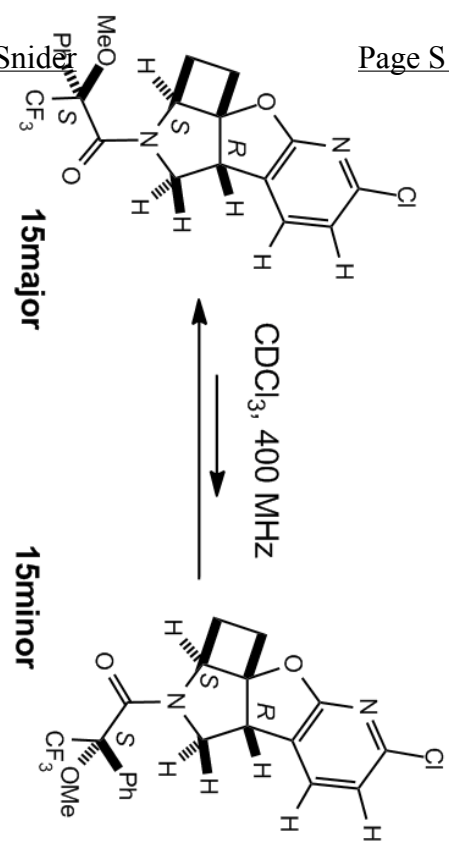


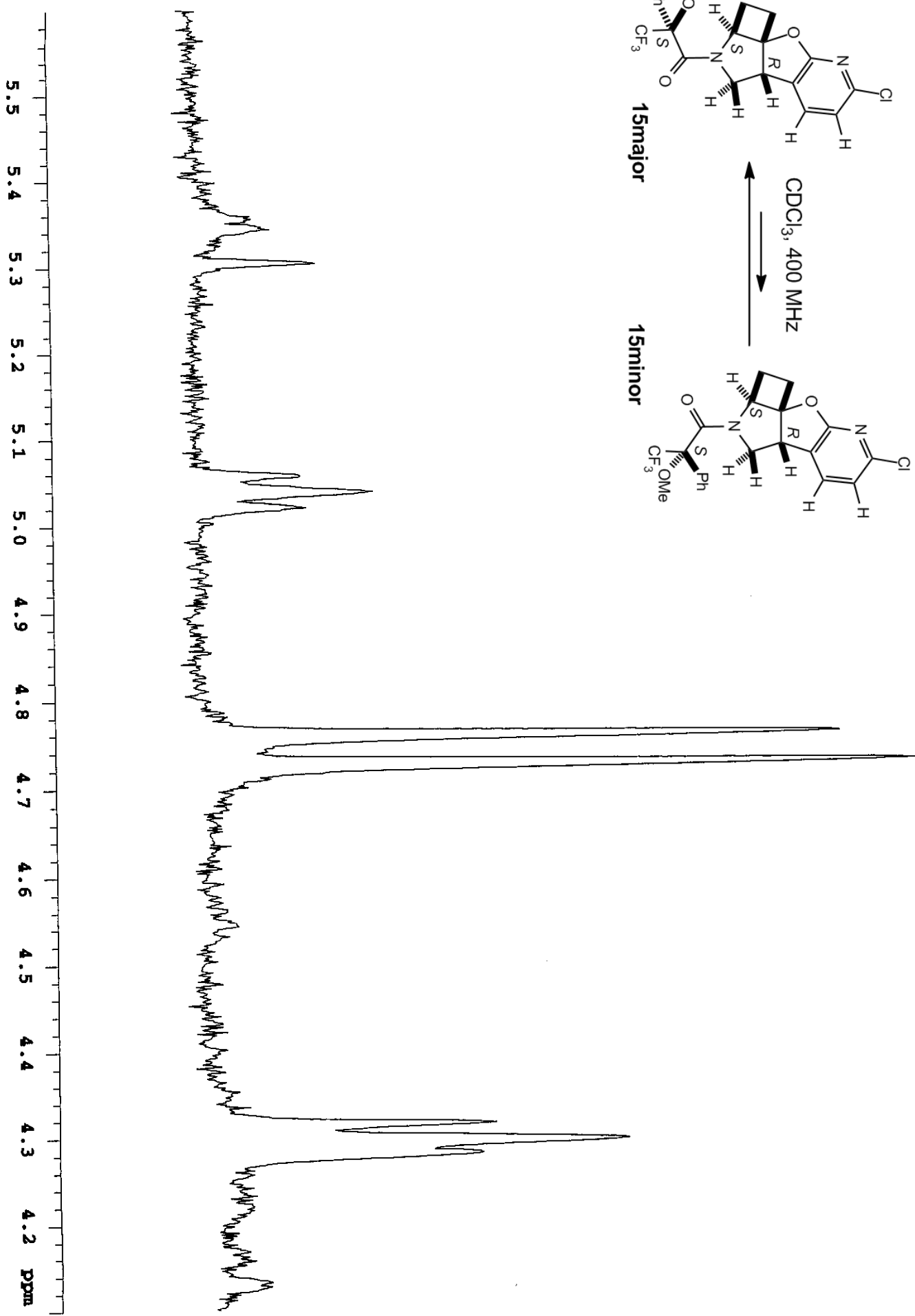
Quant = 8 - 8.7 - 3 (44 min inactive)

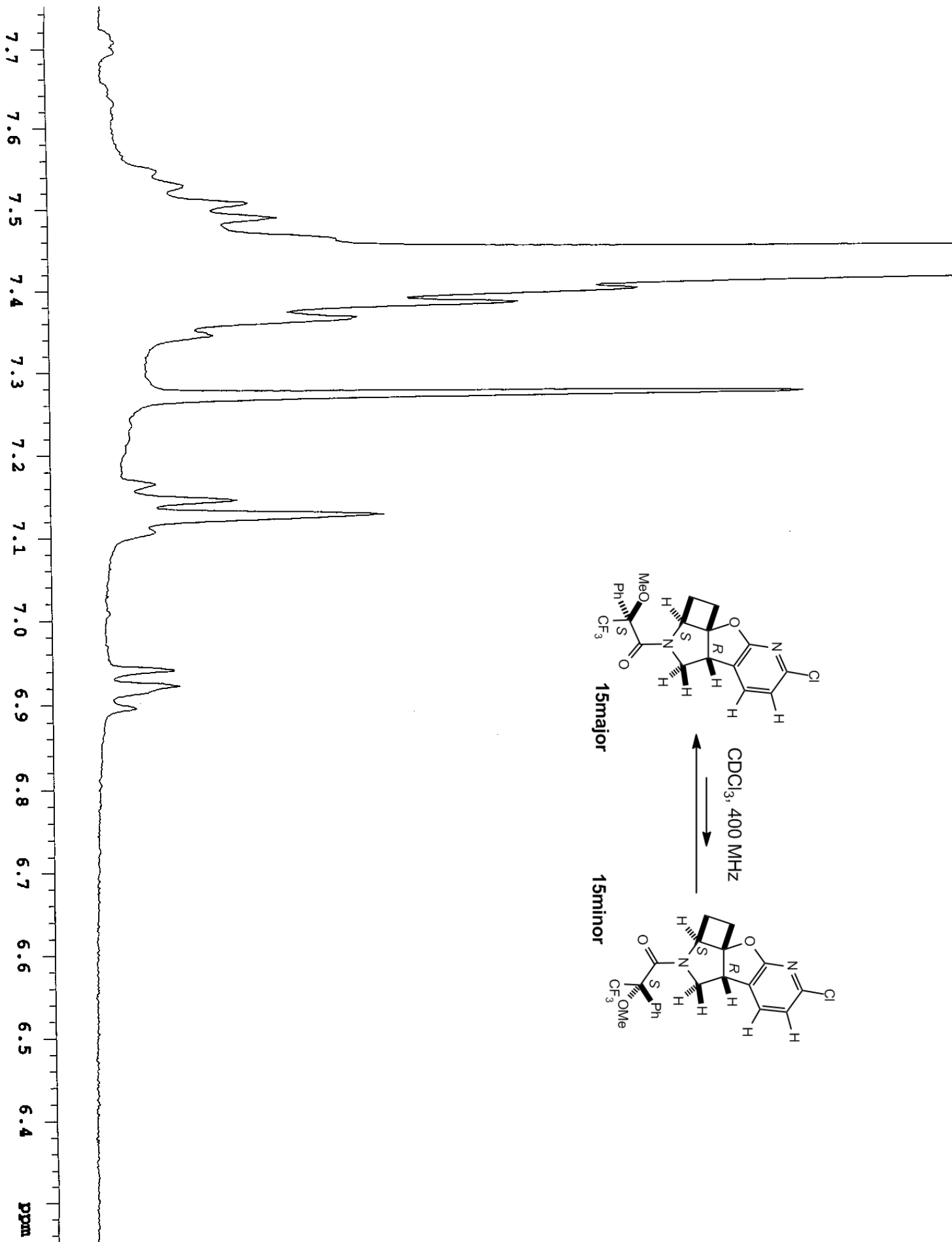












Run - 8-82-4 (29 min, active)

