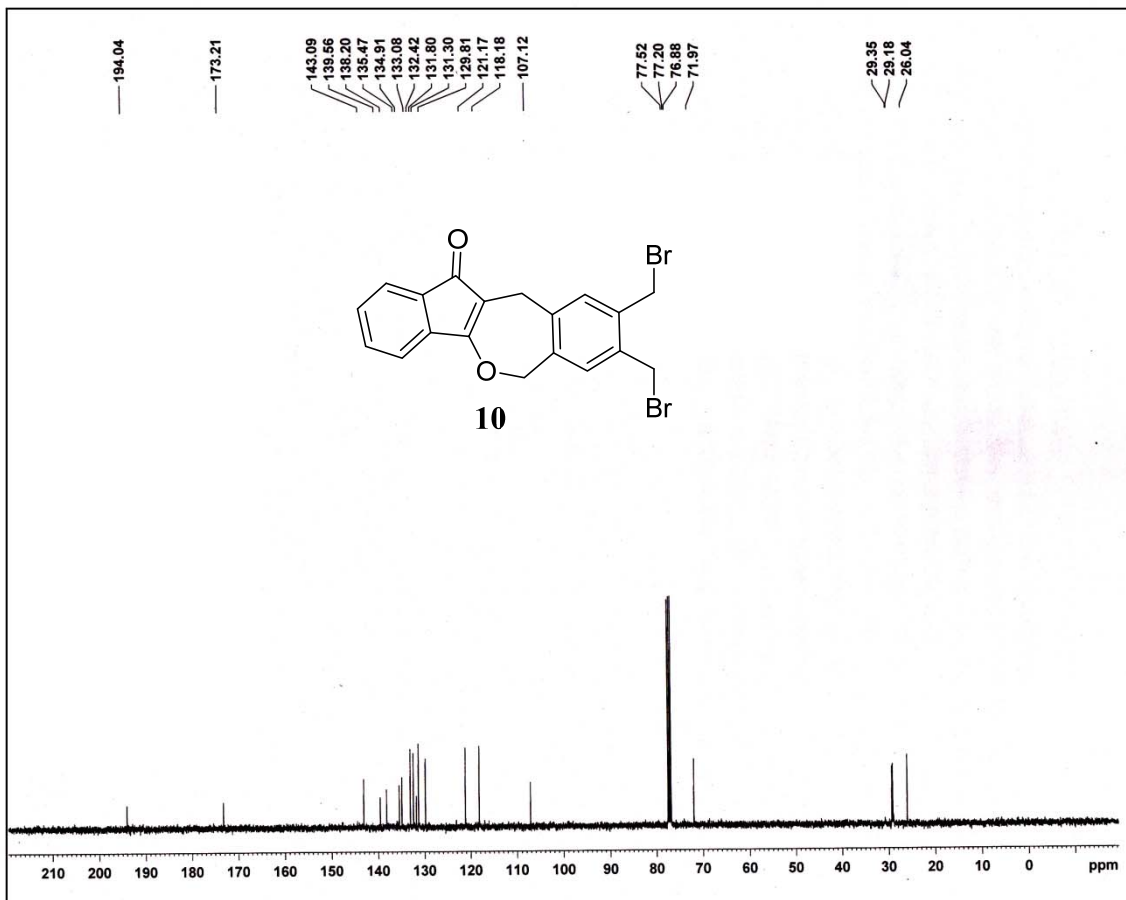
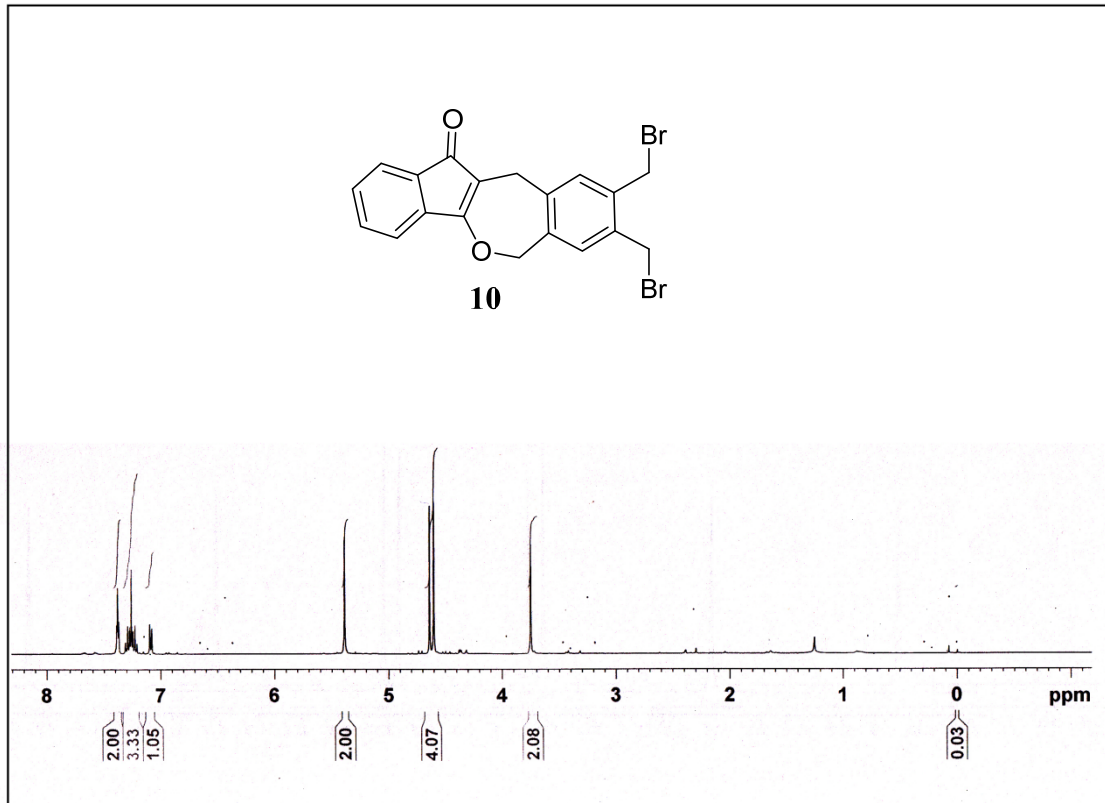


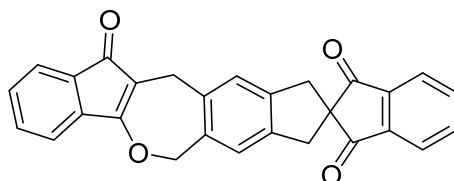
## **$^1\text{H}$ and $^{13}\text{C}$ NMR spectra**

### **DIVERSITY ORIENTED APPROACH TO OXEPINE DERIVATIVES: FURTHER EXPANSION VIA DIELS–ALDER REACTION**

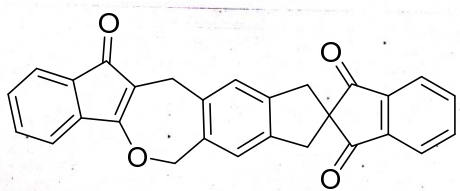
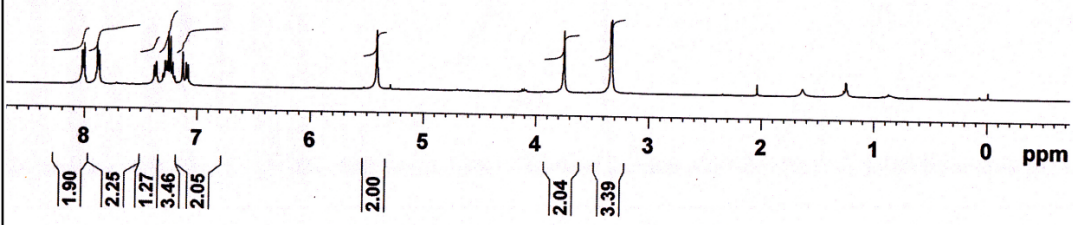
**Sambasivarao Kotha,\* and Rashid Ali**

Department of Chemistry, Indian Institute of Technology-Bombay,  
Powai, Mumbai-400076, India, Fax: +91(22)-2572 7152; E-mail:  
srk@chem.iitb.ac.in

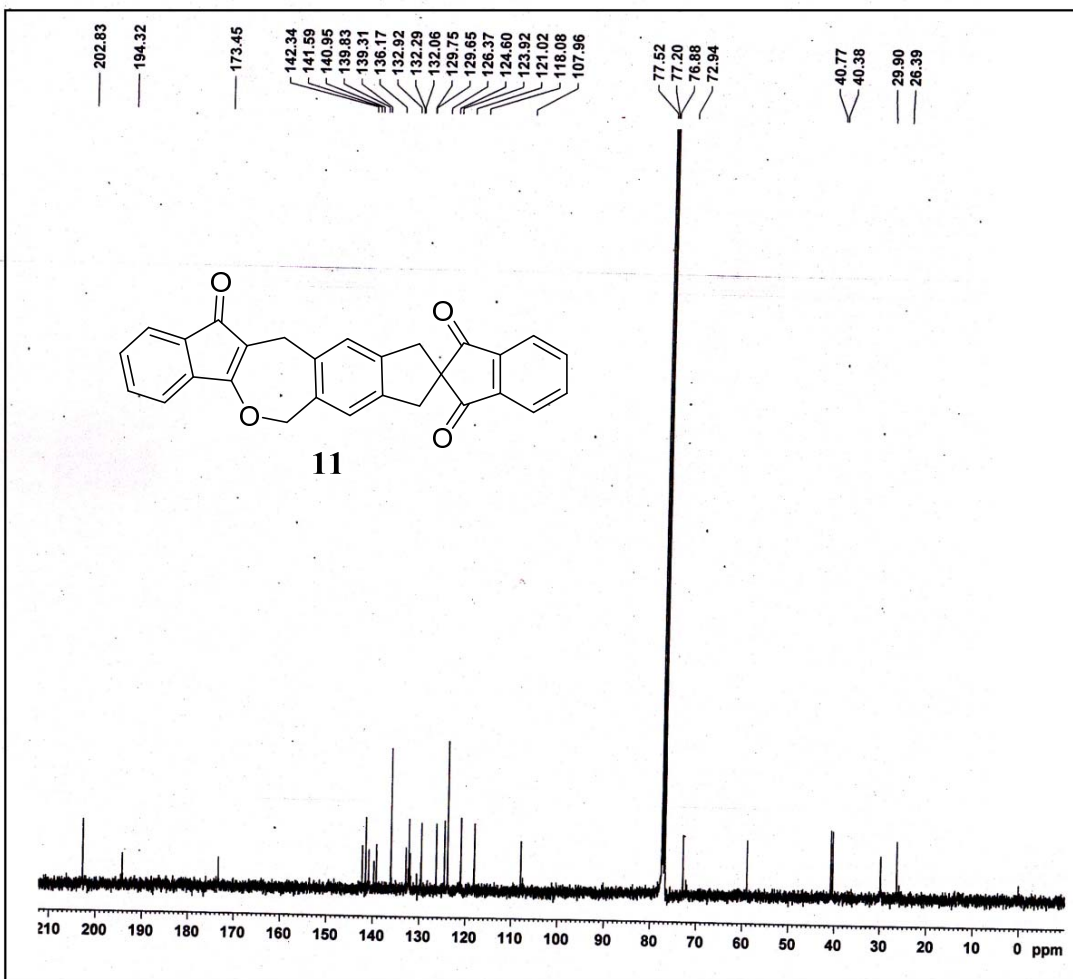


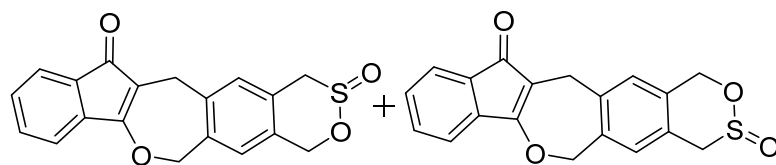


11

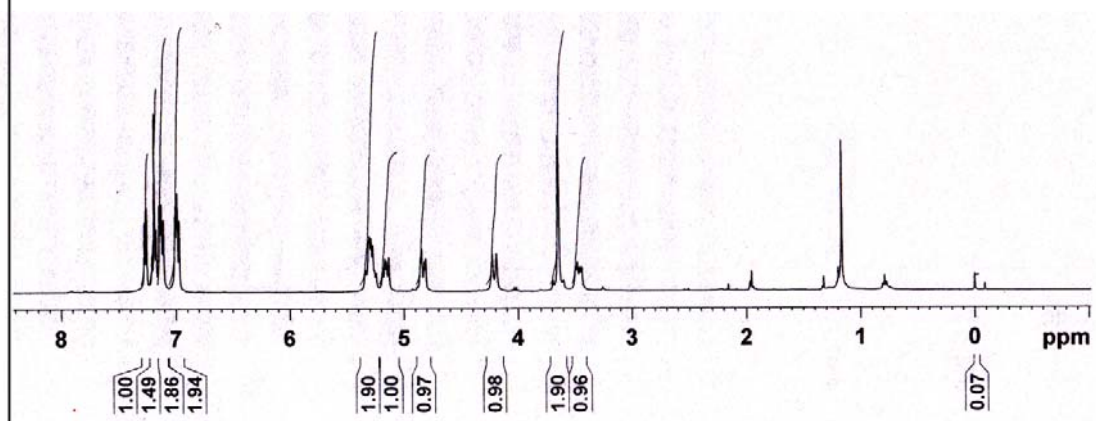


11

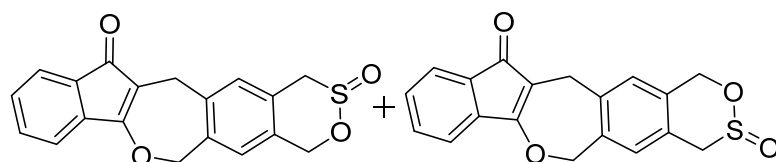




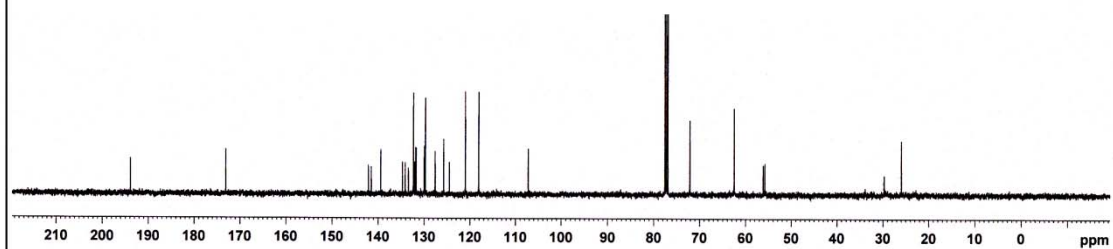
12a and 12b

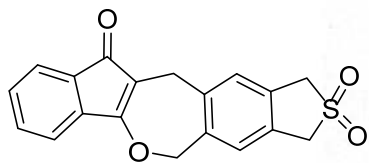


193.87  
173.09  
142.08  
141.45  
139.40  
134.89  
134.07  
133.39  
132.31  
132.12  
131.84  
131.66  
129.94  
129.69  
127.59  
127.53  
125.71  
124.47  
120.98  
118.07  
107.18  
77.52  
77.40  
77.20  
76.88  
72.09  
62.45  
56.12  
55.75  
26.93

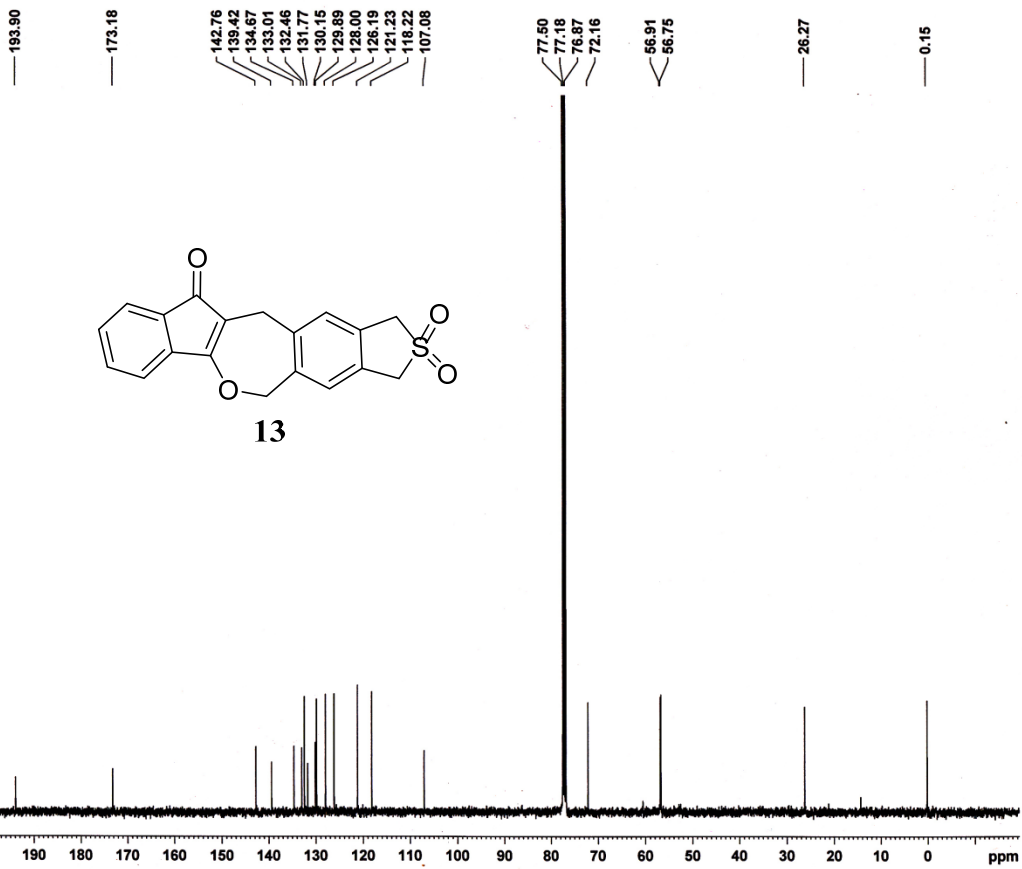
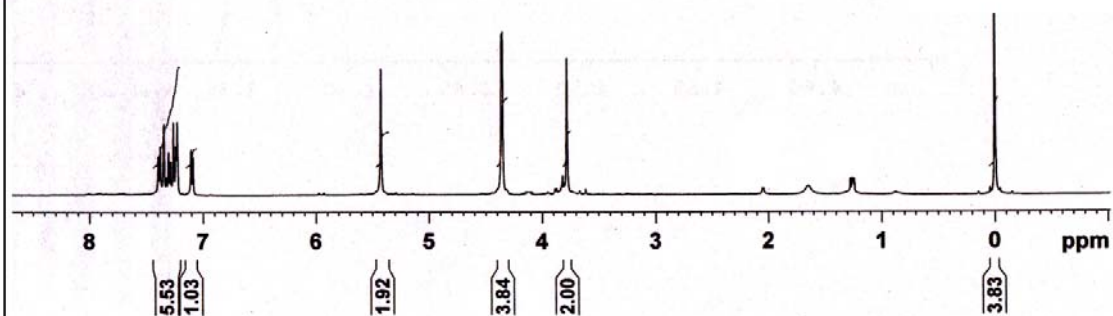


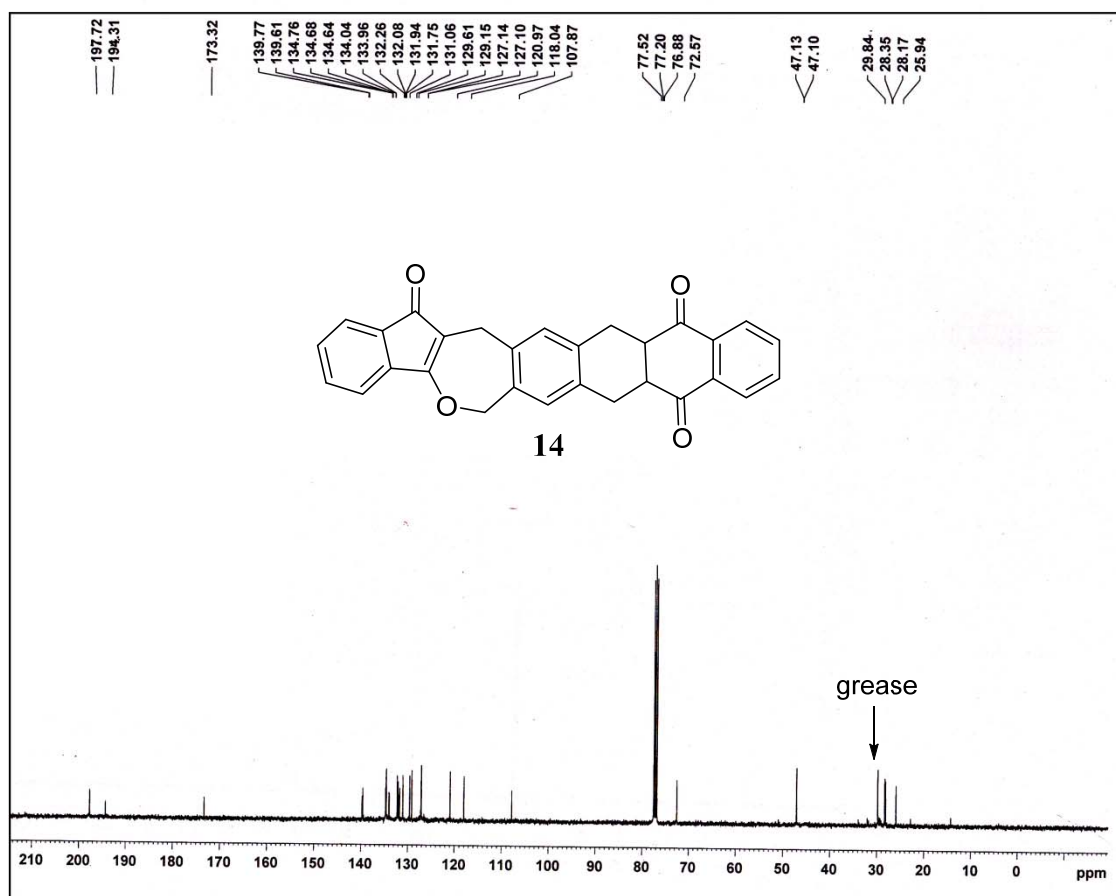
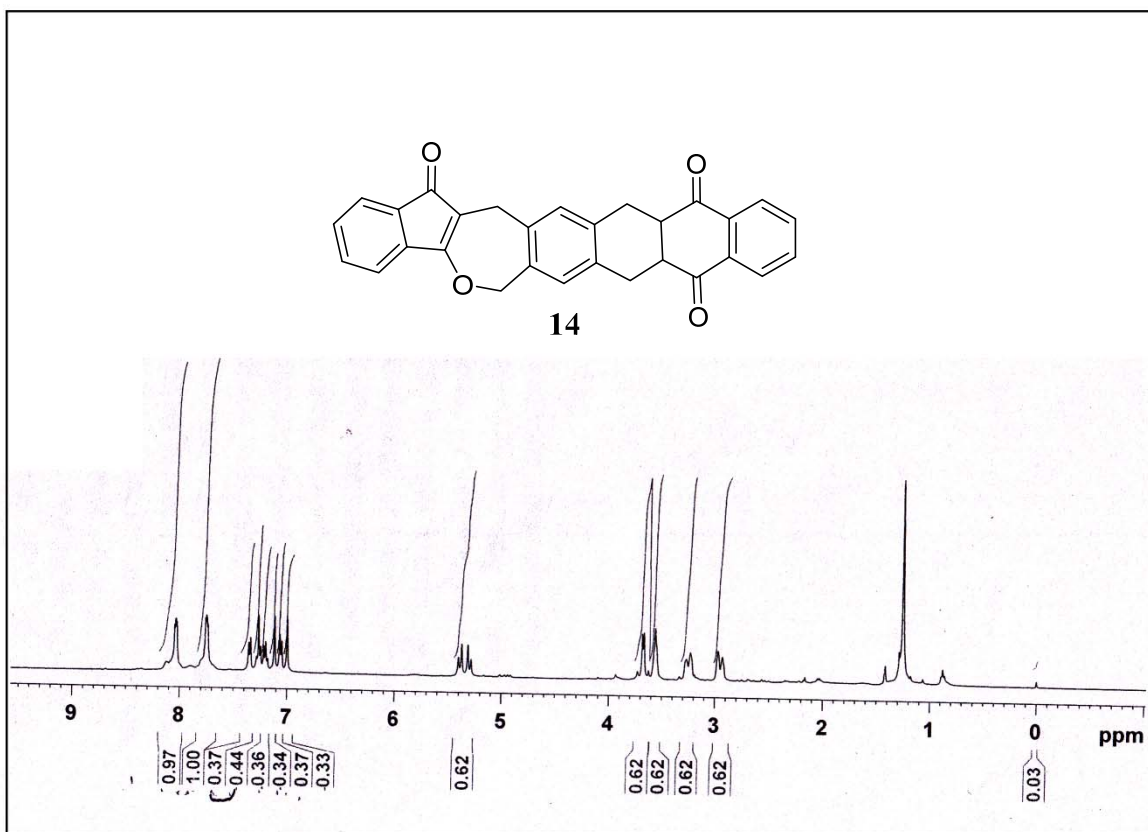
12a and 12a

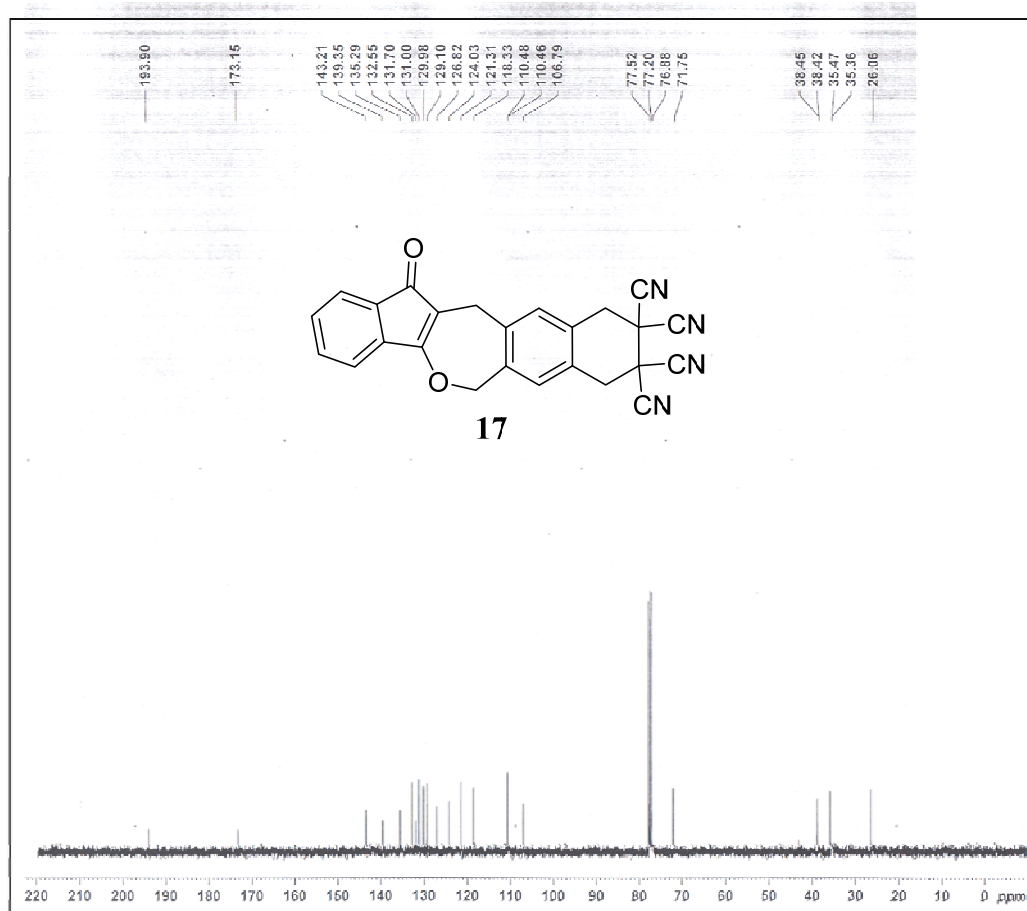
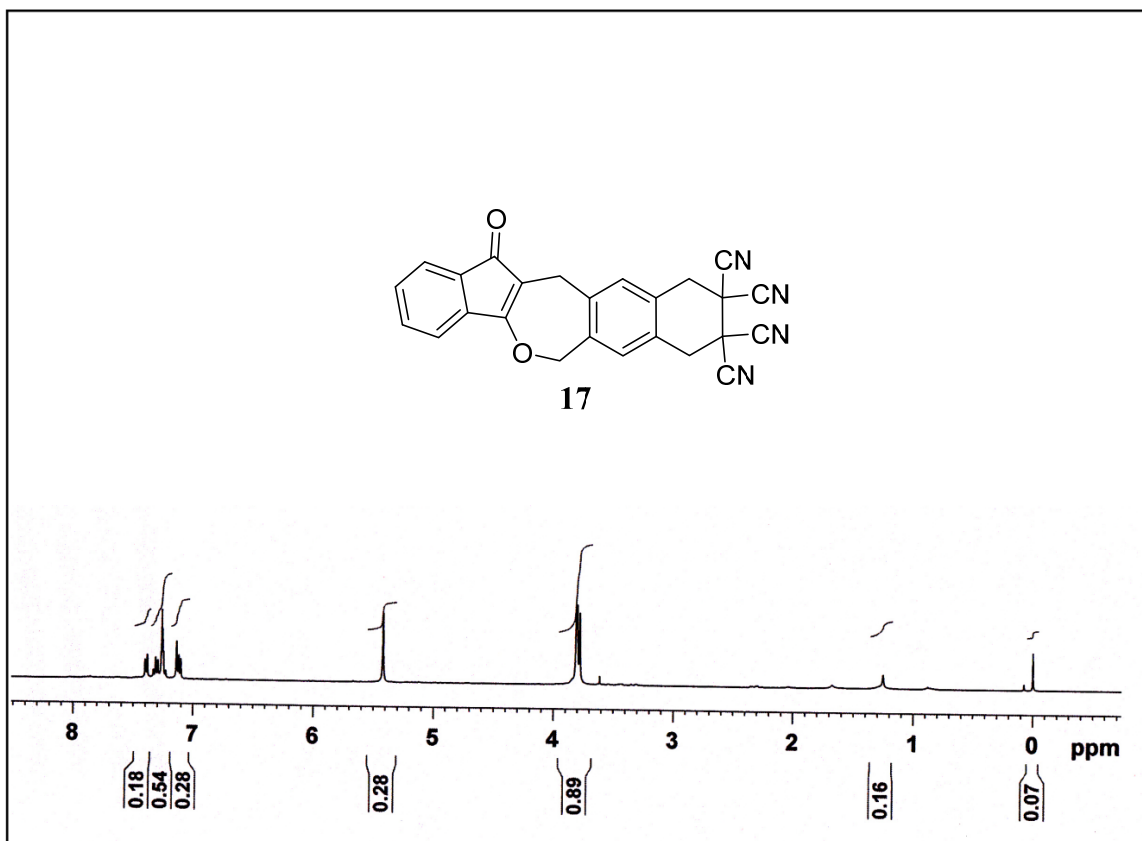


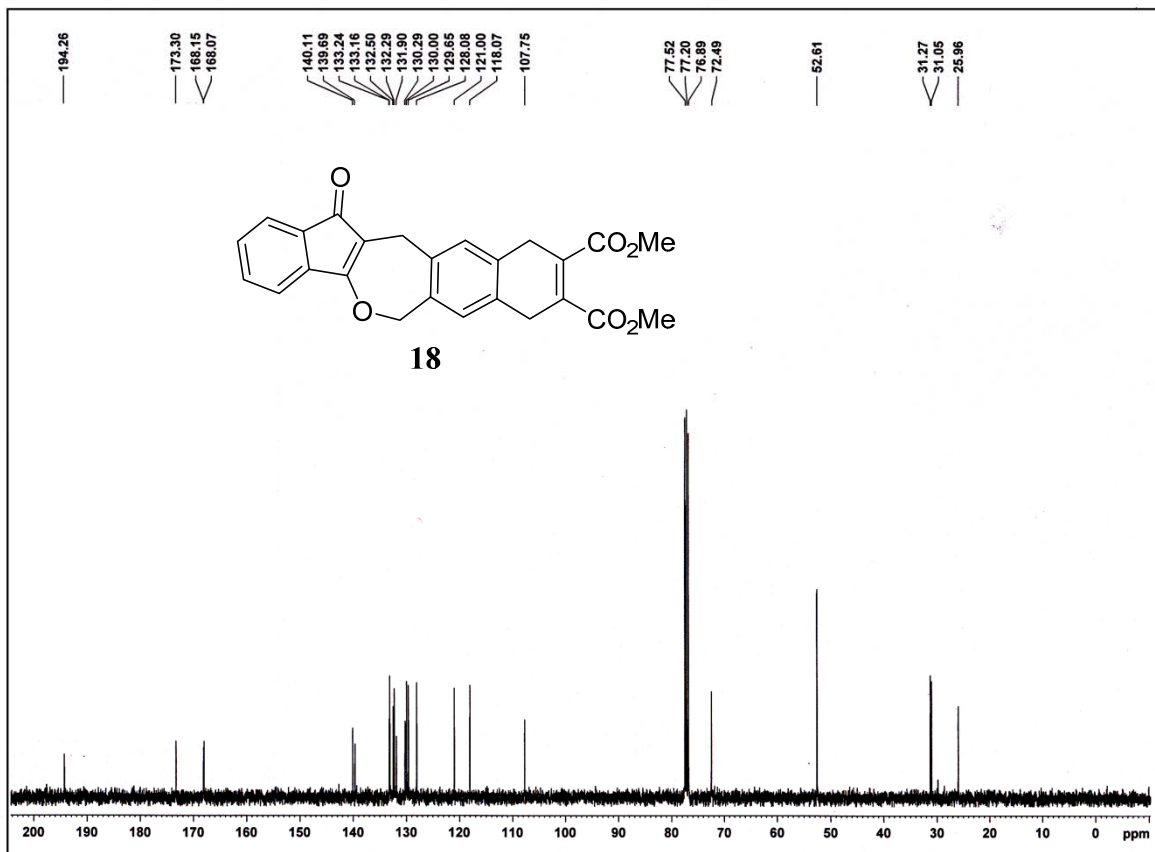
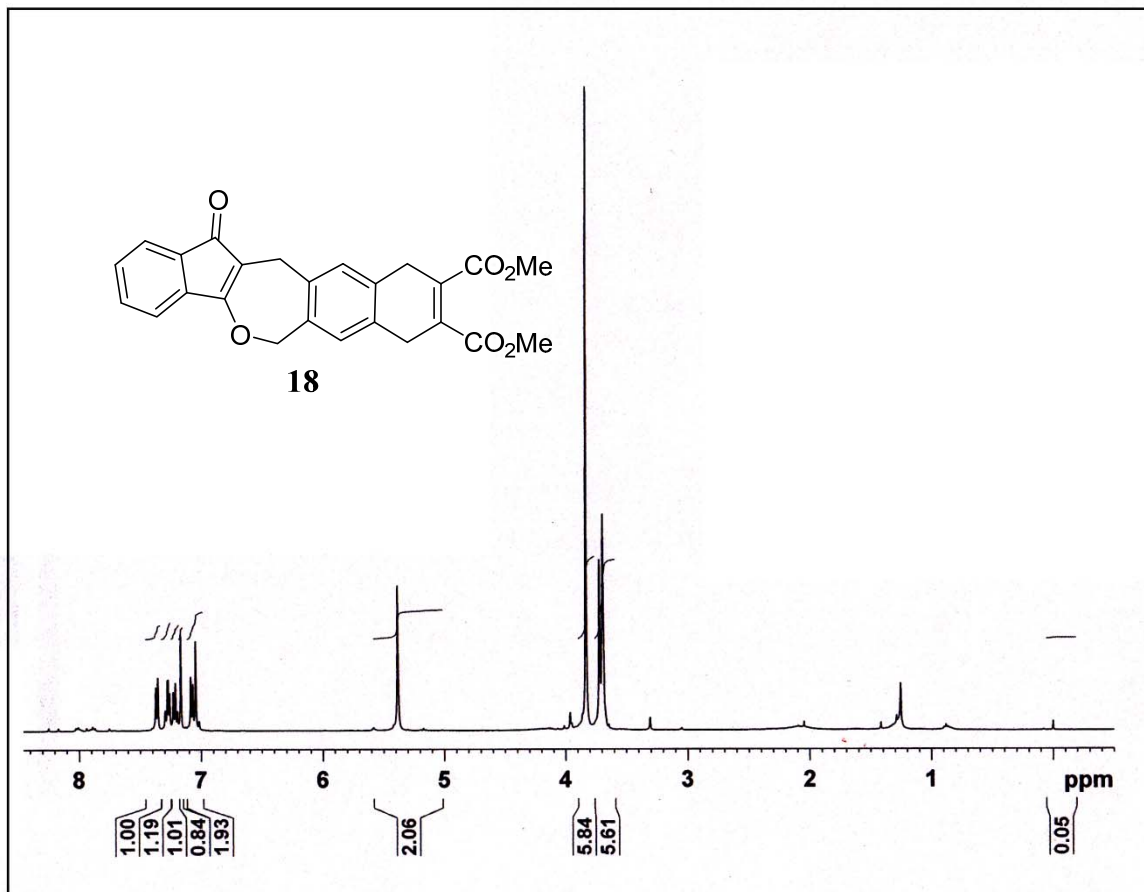


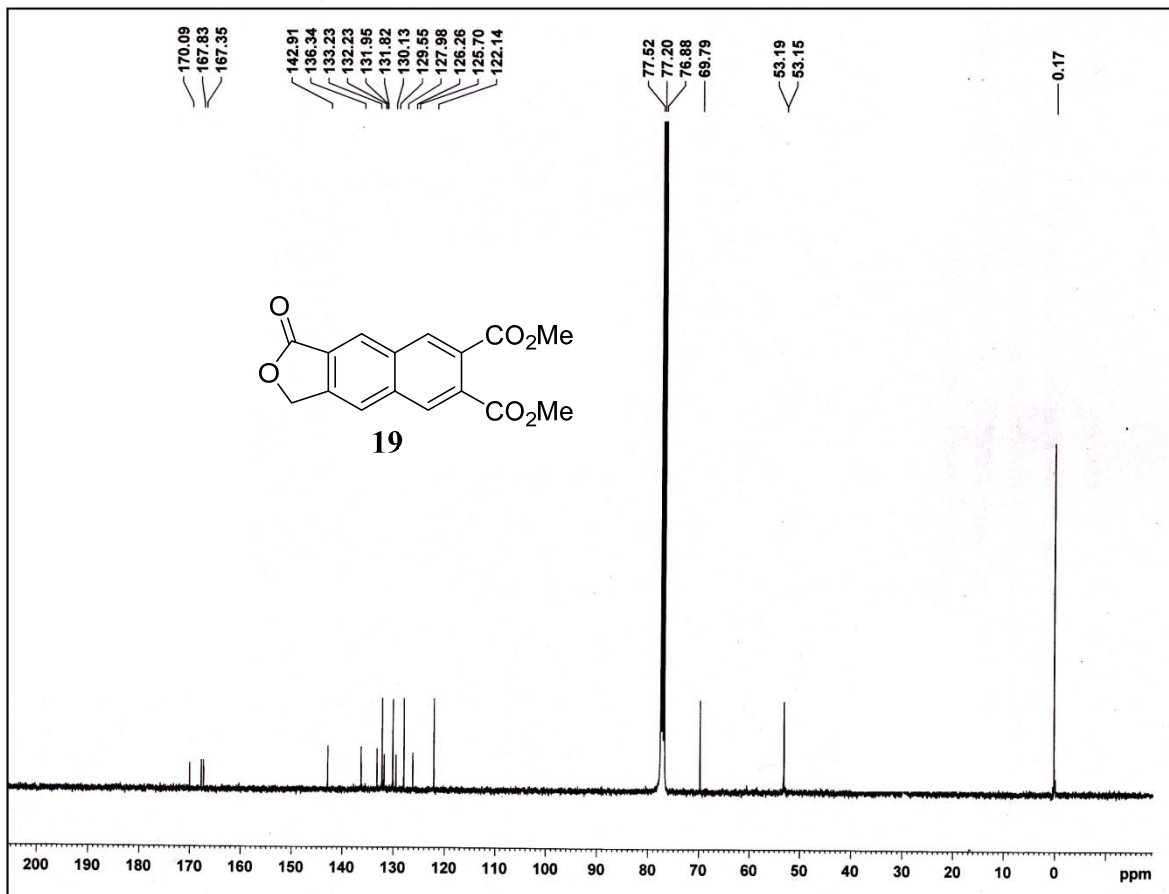
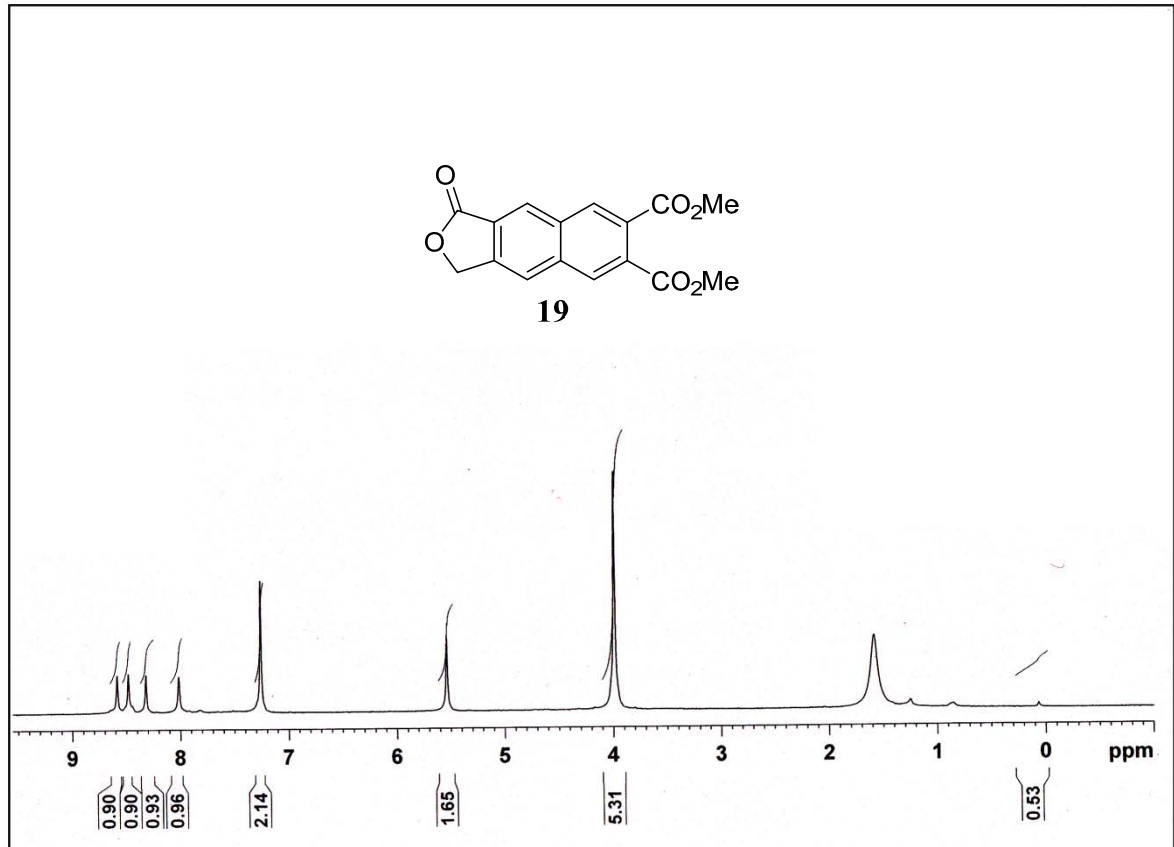
13

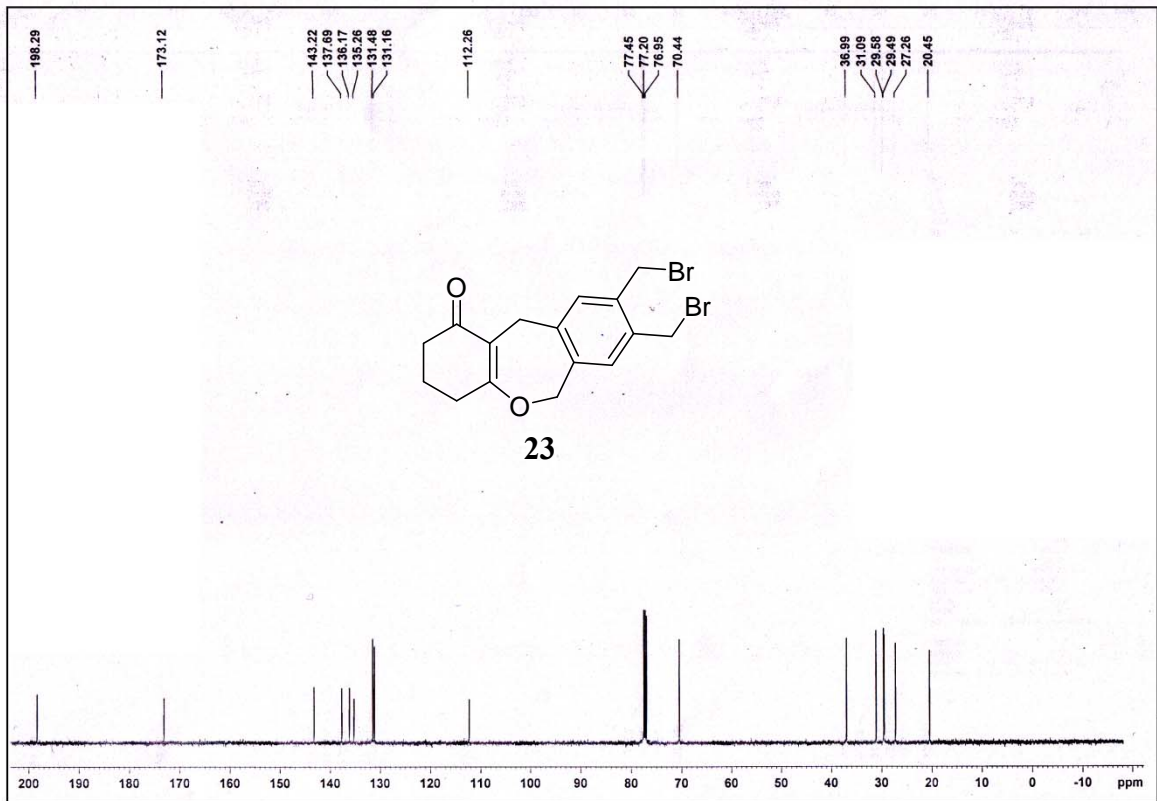
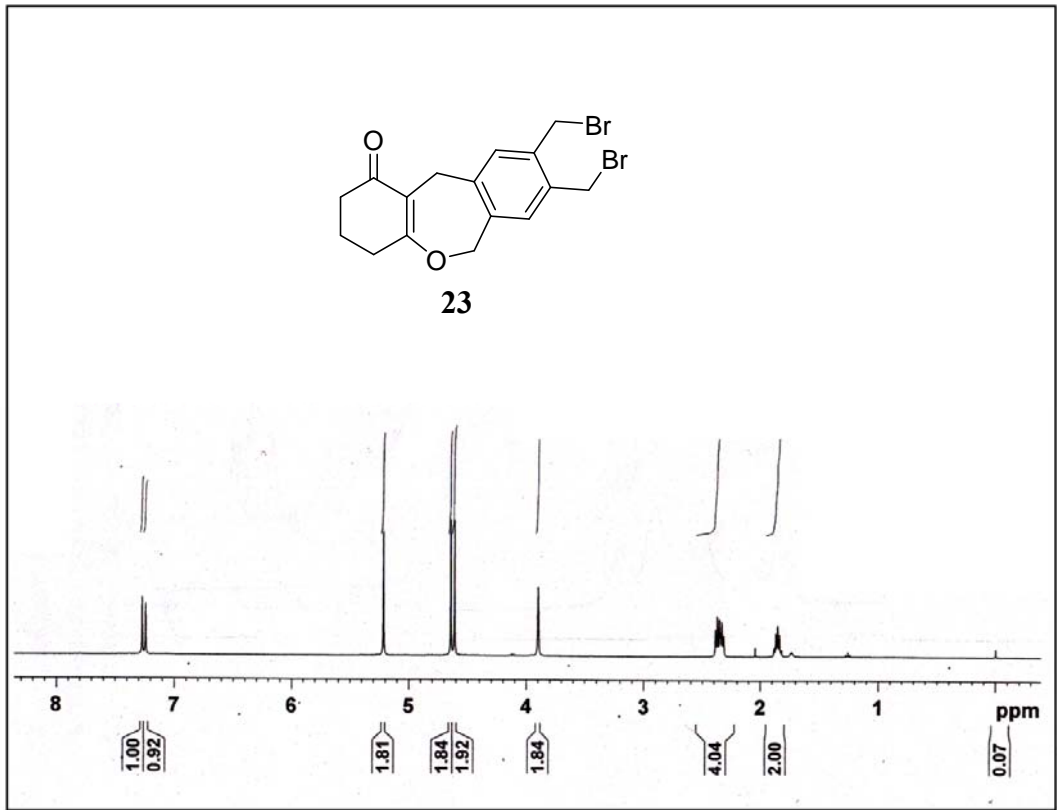


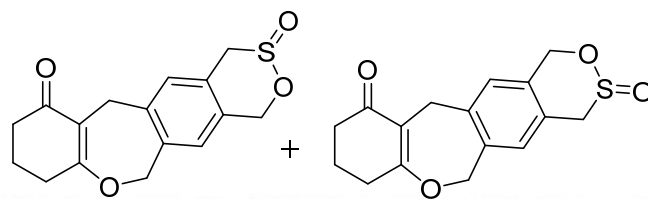




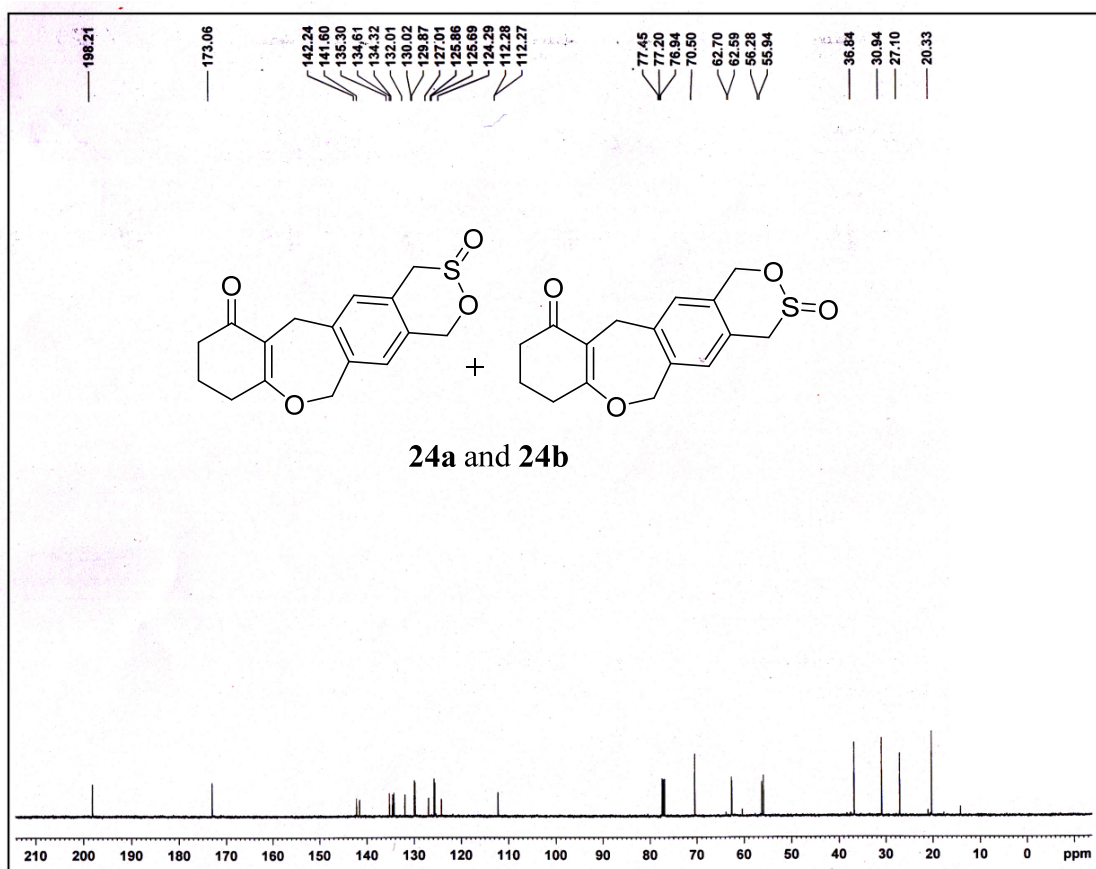
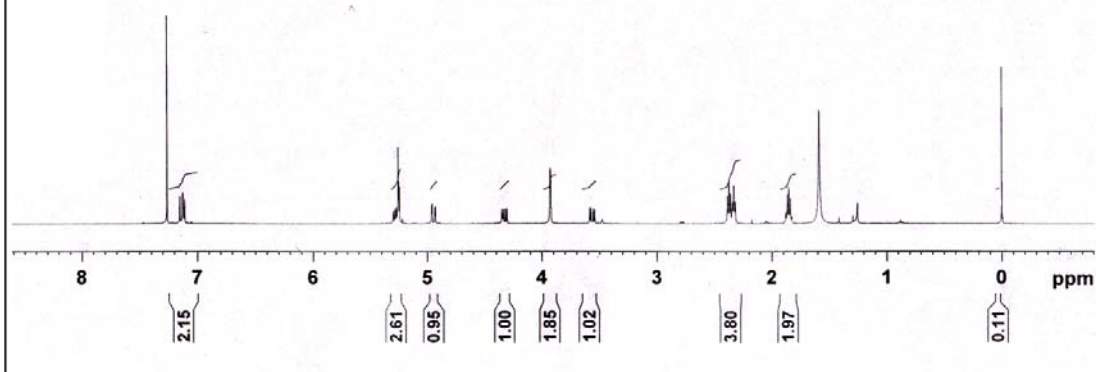


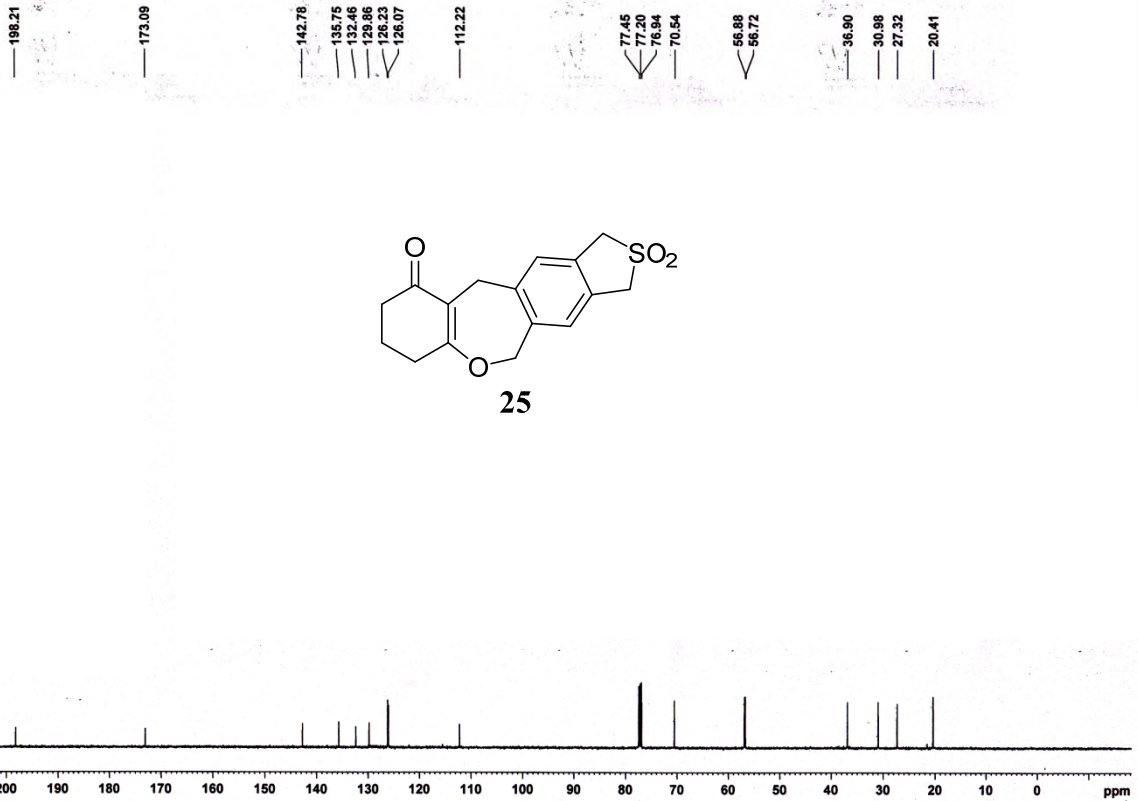
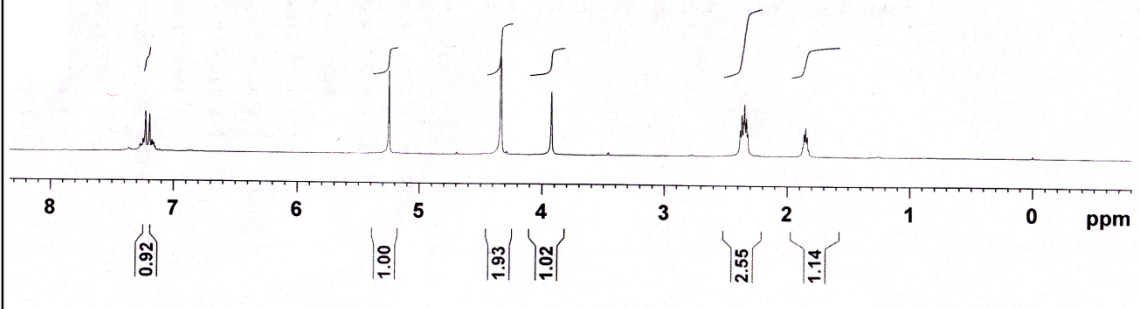
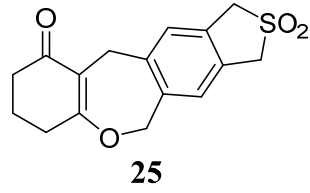


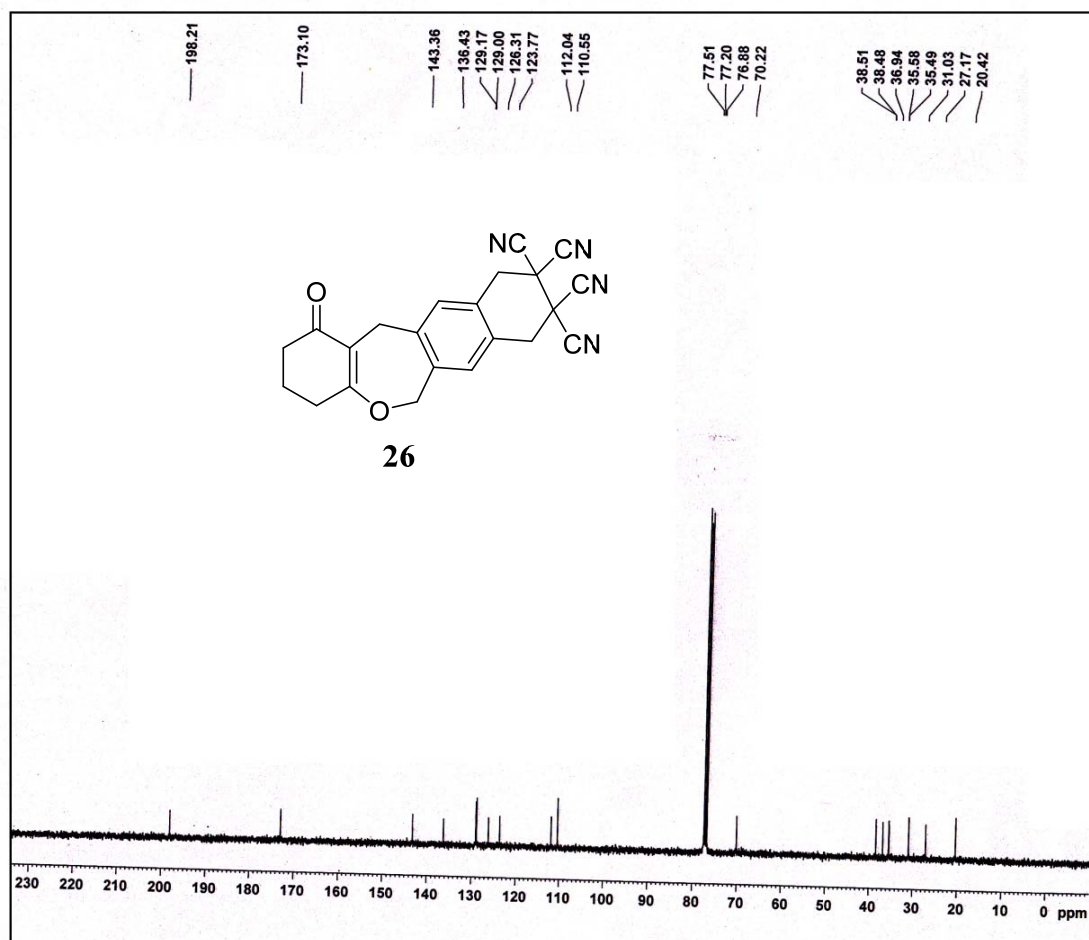
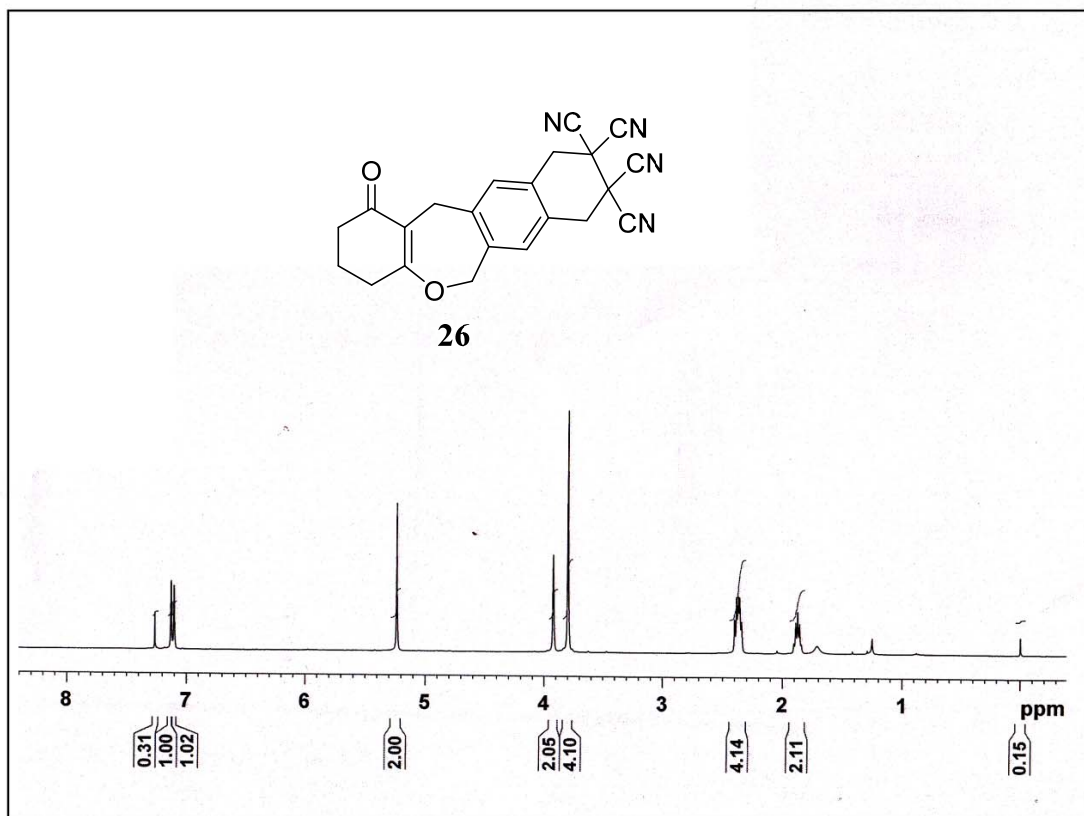


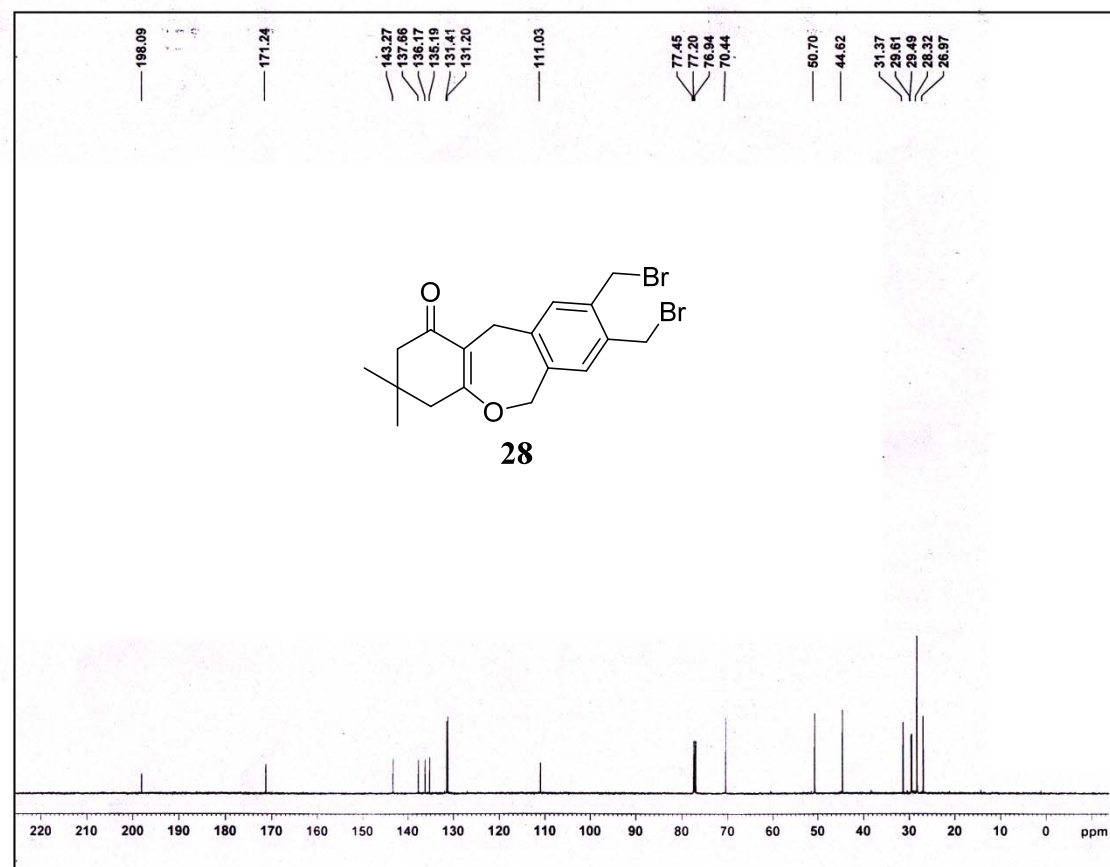
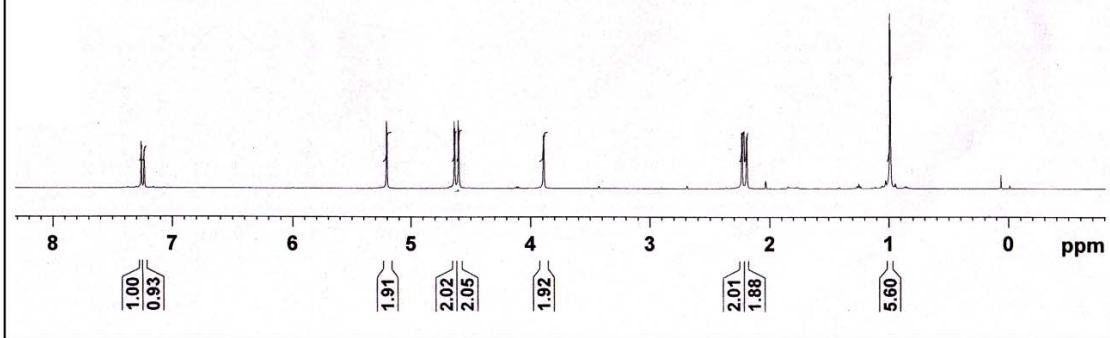
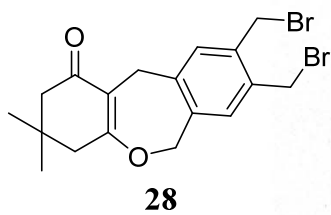


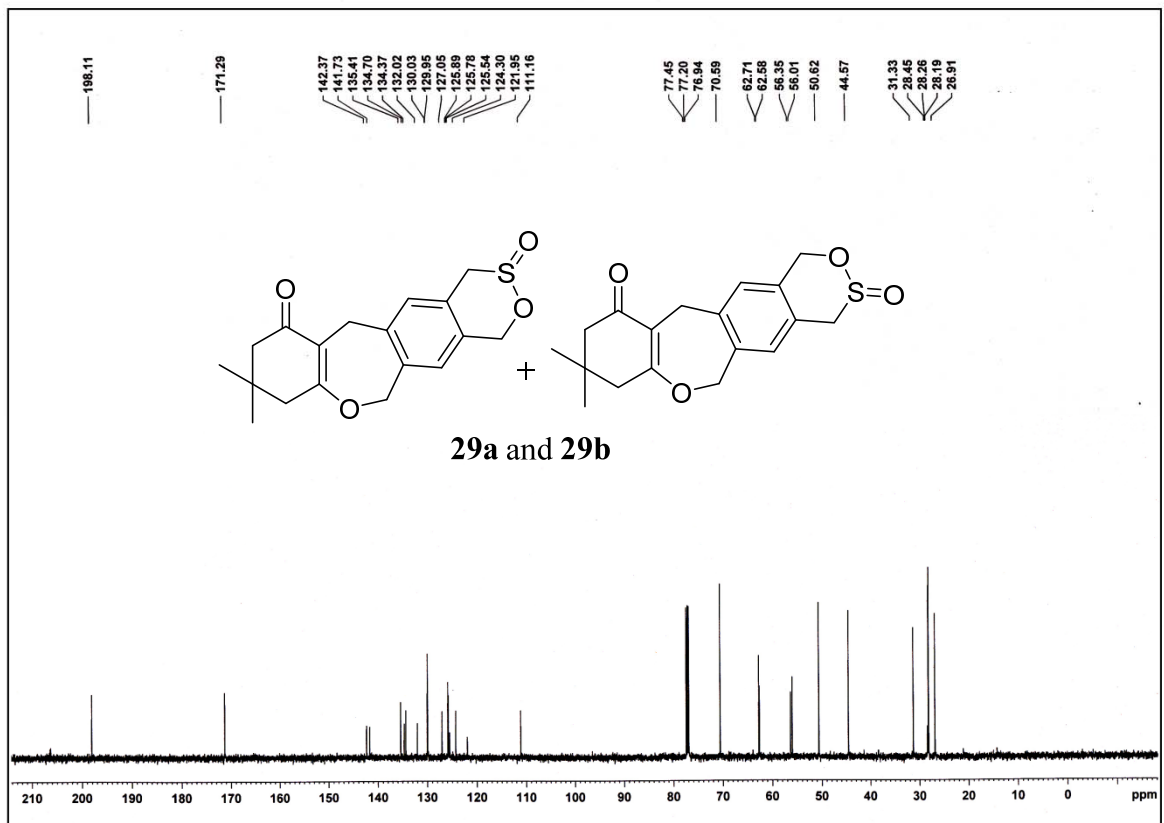
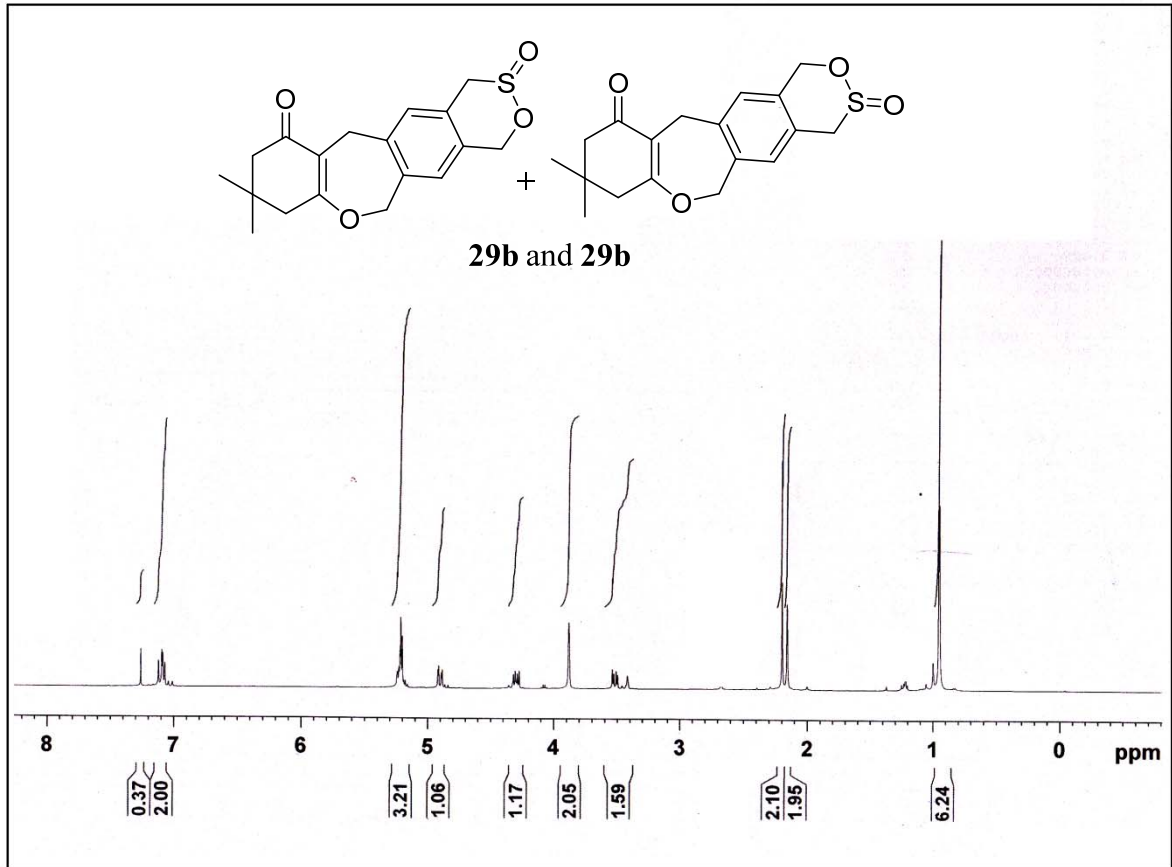
24a and 24b

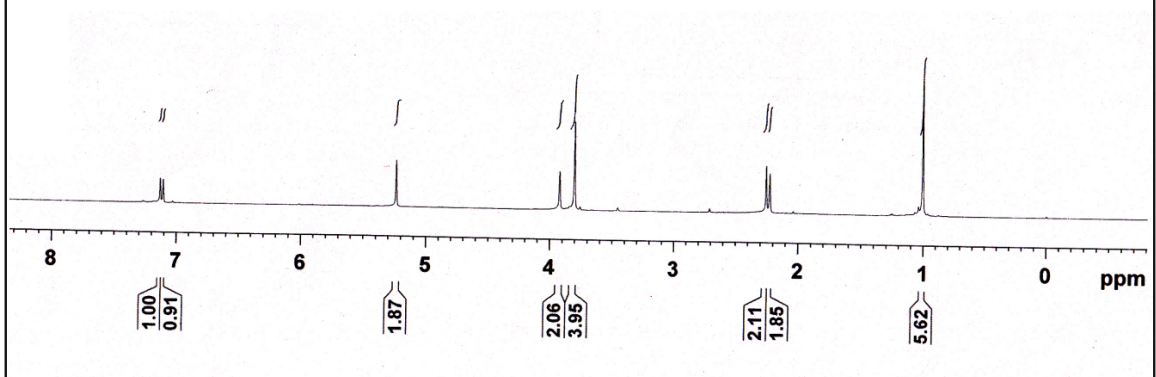
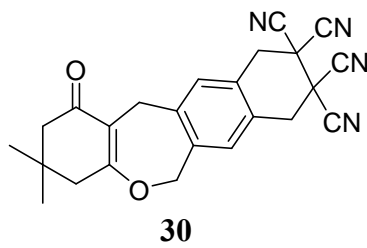












- 198.04
- 171.26
- 143.30
- 136.40
- 129.06
- 129.01
- 126.25
- 123.71
- 110.79
- 110.58
- 110.56
- 77.46
- 77.20
- 76.95
- 70.18
- 50.60
- 44.50
- 38.50
- 38.47
- 35.42
- 35.34
- 31.36
- 28.26
- 26.86

