

Supporting Information

PHOSPHORYLATED THIALCALIX[6]ARENE: SYNTHESIS AND CHARACTERIZATION OF HOST-GUEST COMPLEX OF SELECTIVE Pd²⁺ ION EXTRACTION

Munkhtuya Ulzi,^a Kunda Uma Maheswara Rao,^b Manabu Yamada,^c and Fumio Hamada*^a

*^aDepartment of Applied Chemistry for Environments, Graduate School of Engineering and Resource Science, Akita University, 1-1 Tegatagakuen-machi, Akita, 010-8502, Japan. Tel/Fax: +81 18 889 2440. E-mail: hamada@gipc.akita-u.ac.jp.

^bVenture Business Laboratory, Akita University, 1-1 Tegatagakuen-machi, Akita, 010-8502, Japan. Tel/Fax: +81-18-889-2442.

^cResearch Center for Engineering Science, Graduate School of Engineering and Resource Science, Akita University, 1-1 Tegatagakuen-machi, Akita, 010-8502, Japan. Tel/Fax: +81-18-889-3068.

Supporting Information Comprises of

Supplementary Table S1: Concentration of metalcations in PGM solution at pH 3.68.

Supplemntary Fig S1: IR spectrum of **1**

Supplemntary Fig S2: IR spectrum of **1**-Pd²⁺ complex

Supplementary Fig S3: ¹H NMR spectrum of **1**

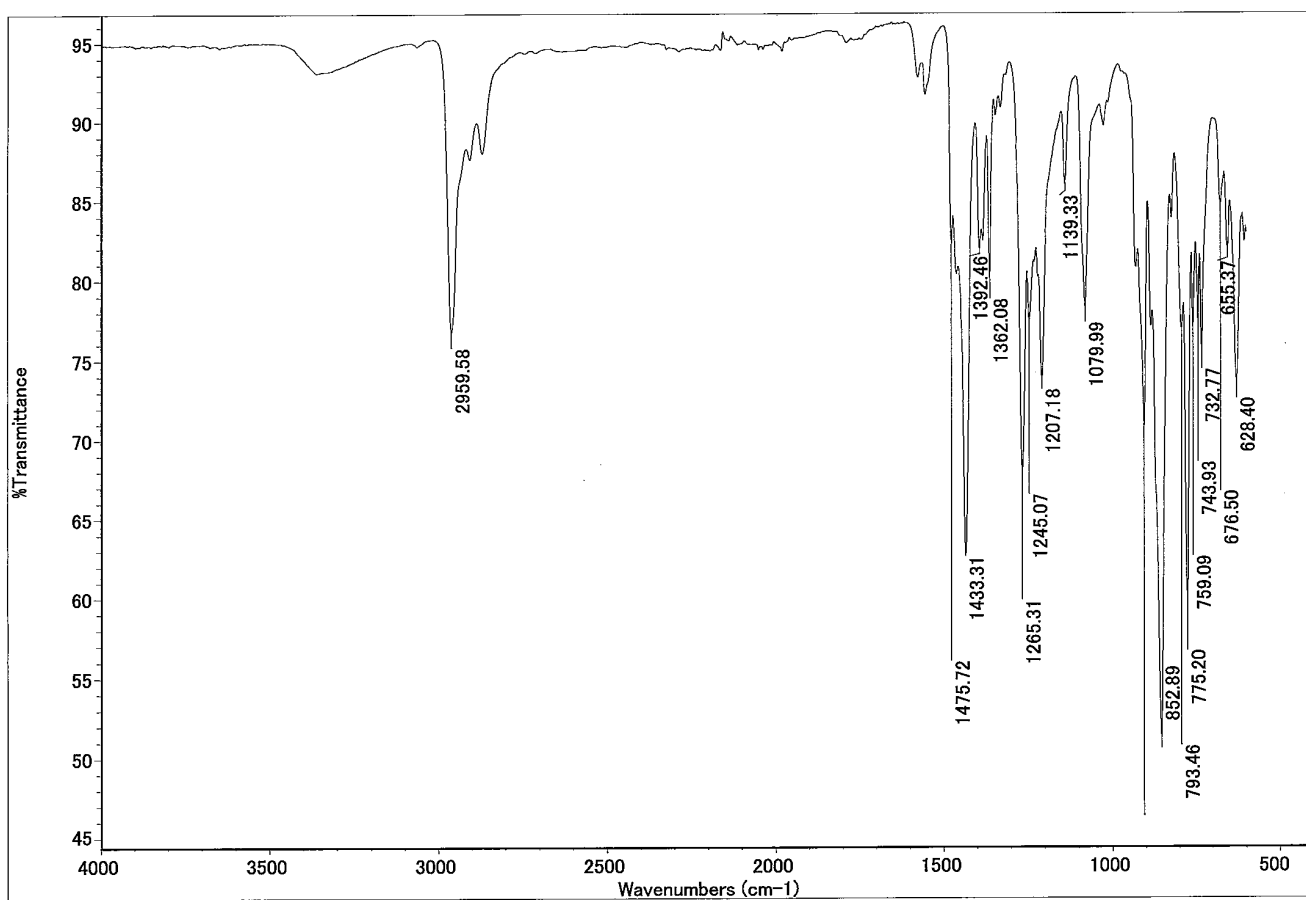
Supplementary Fig S4: ¹H NMR spectrum of **1**-Pd²⁺ complex

Supplementary Fig S5: ³¹P NMR spectrum of **1**

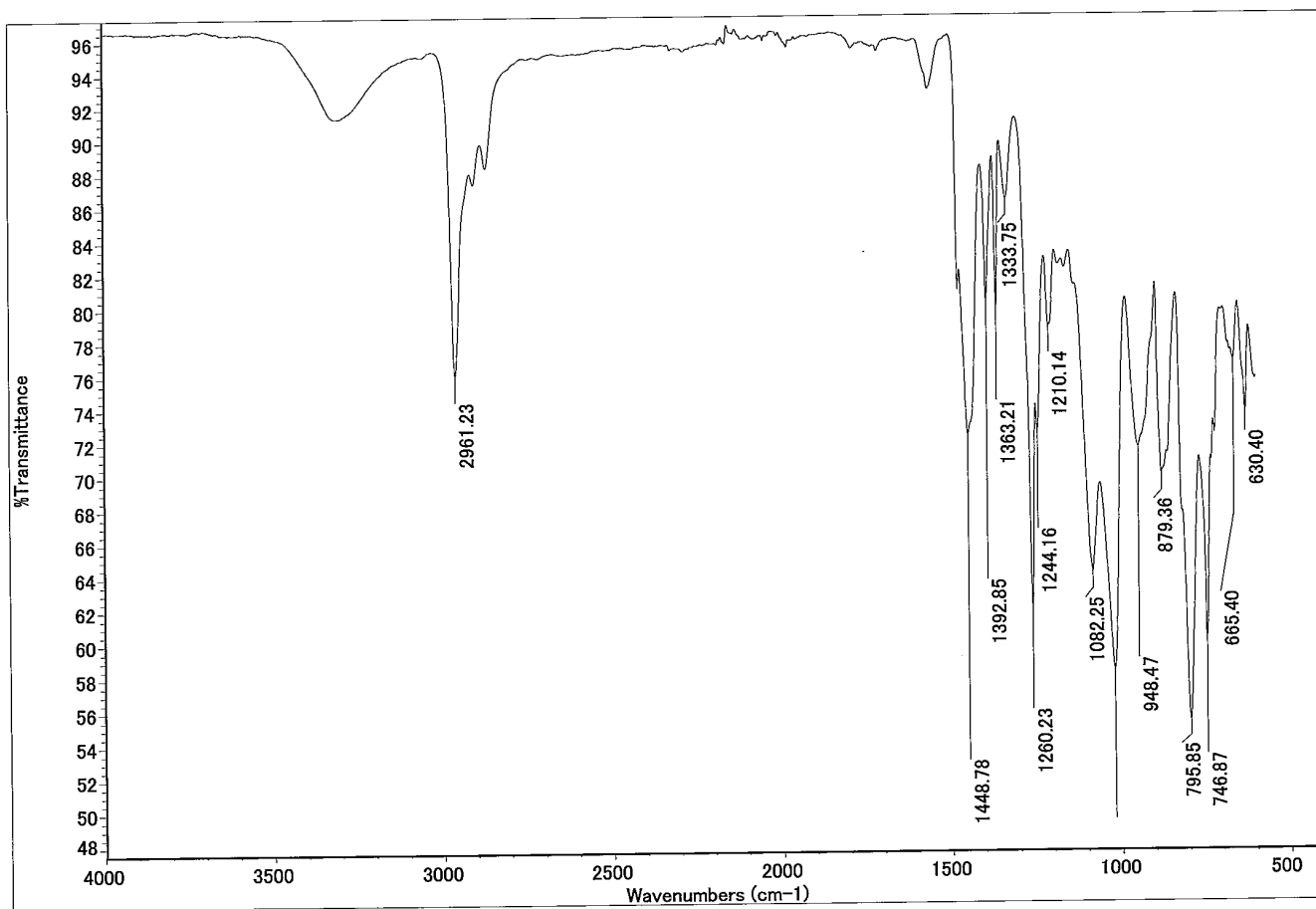
Supplementary Fig S6: ³¹P NMR spectrum of **1**-Pd²⁺ complex

Metal cation	Concentration (ppm)
Al	4.53
Ba	4.30
Ce	8.83
Y	0.07
La	1.35
Pd	1.39
Pt	0.84
Rh	0.55
Zr	0.40

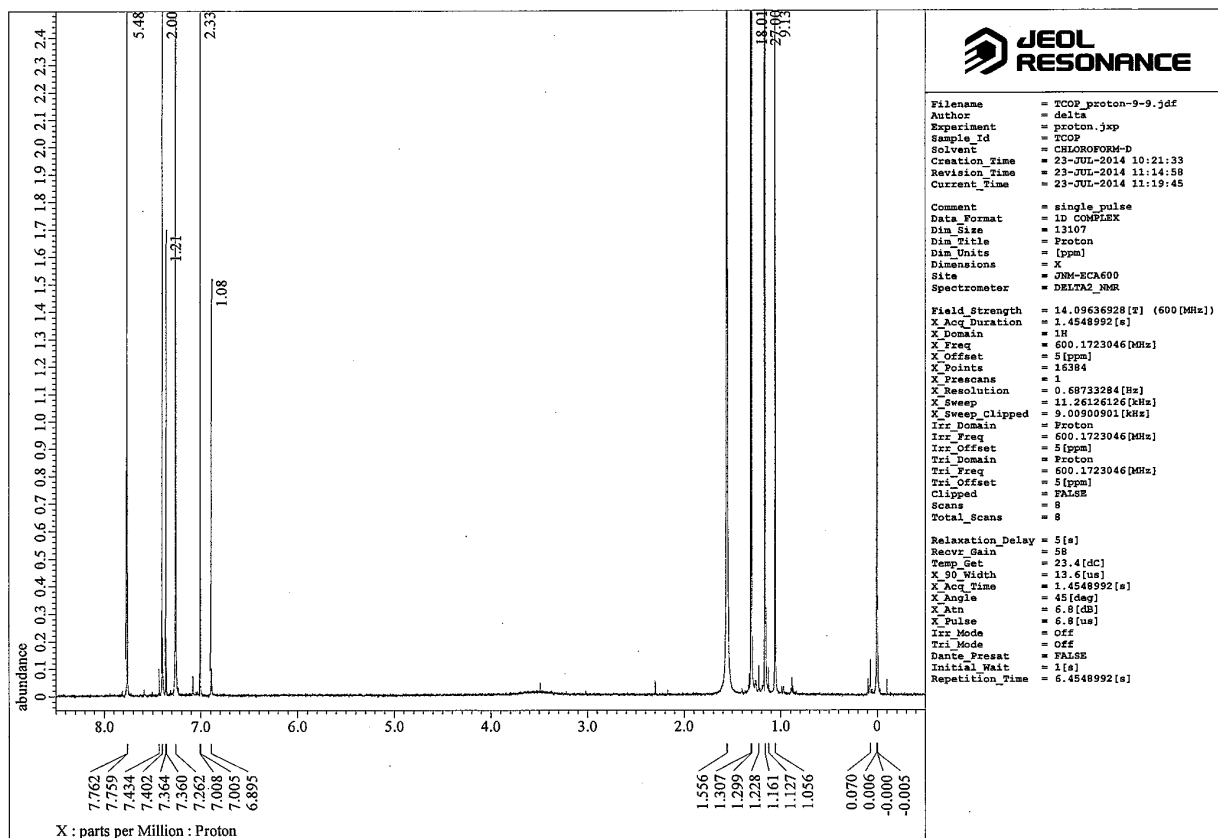
Supplementary Table S1: Concentration of metal cations in PGM solution at pH 3.68



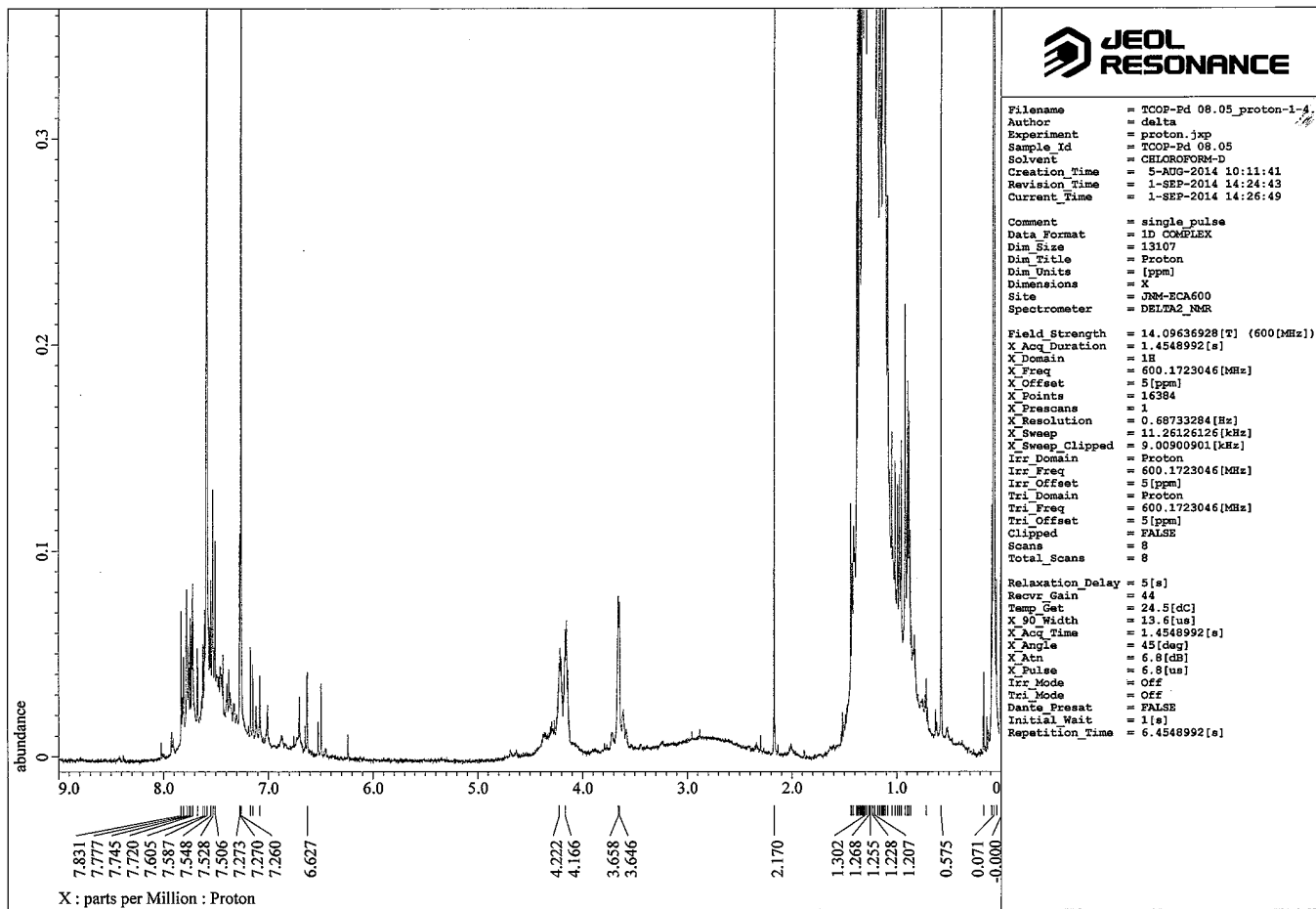
Supplementary Fig S1: IR spectrum of 1



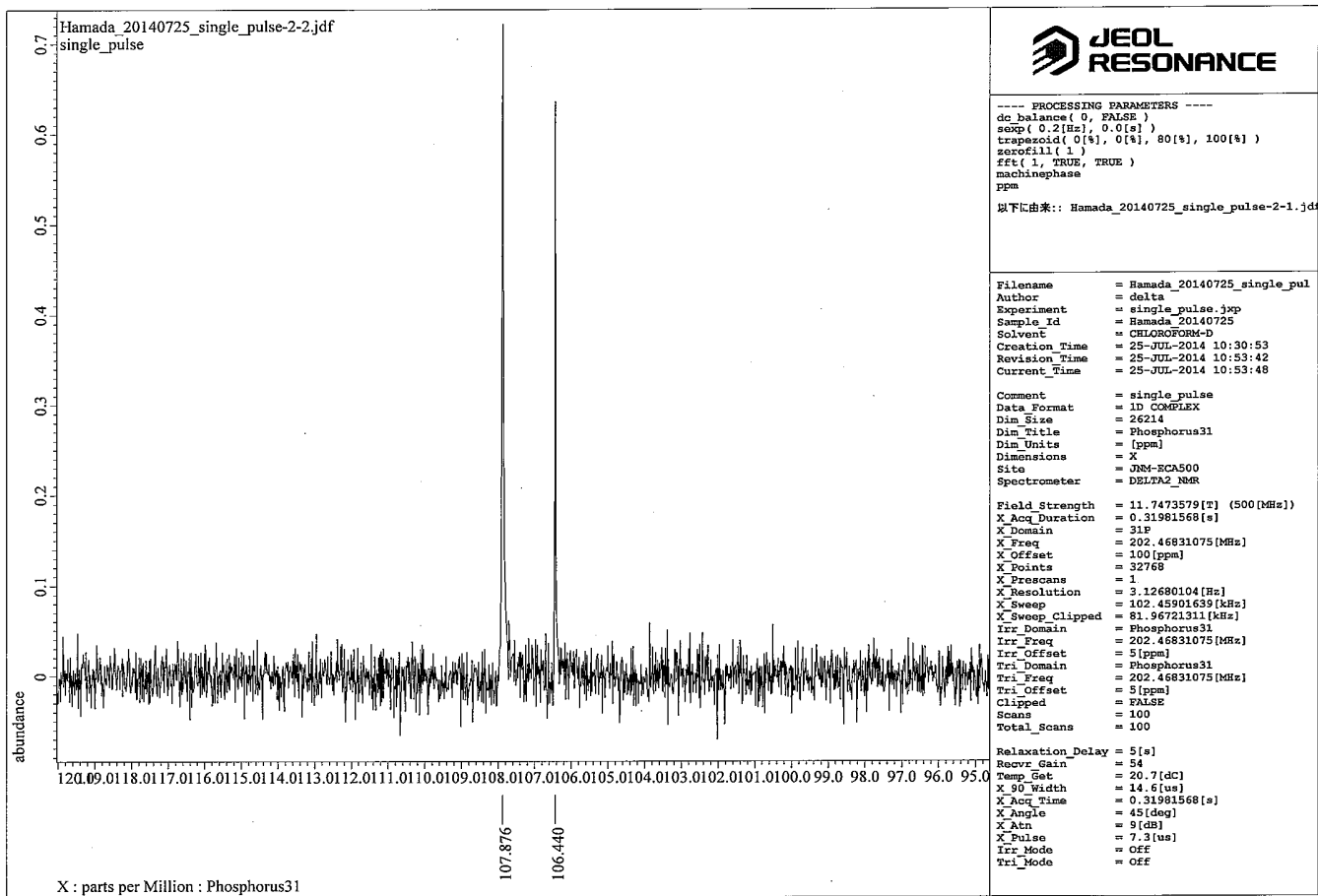
Supplementary Fig S2: IR spectrum of 1-Pd²⁺ complex



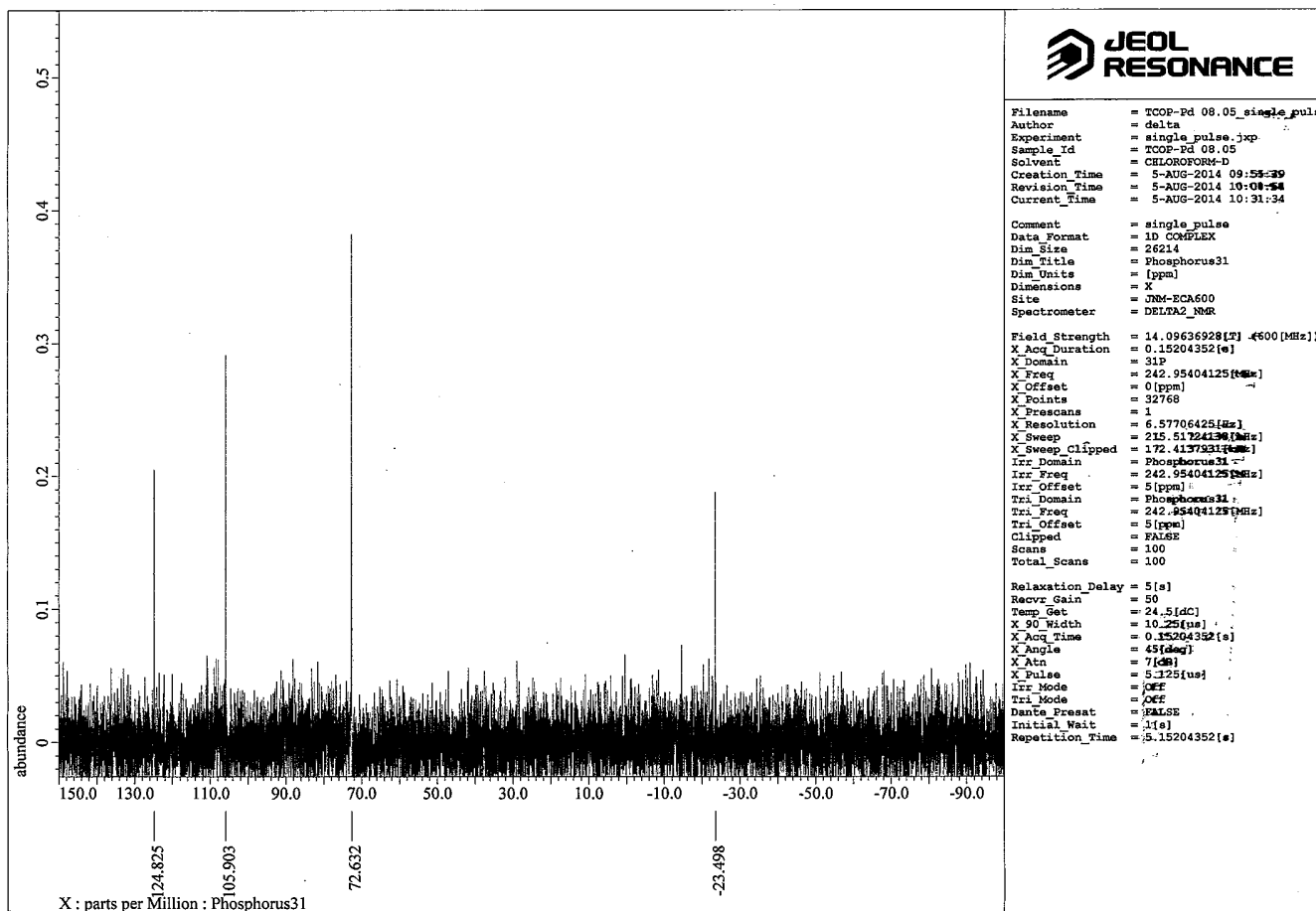
Supplementary Fig S3: ¹H NMR spectrum of 1



Supplementary Fig S4: ^1H NMR spectrum of 1-Pd^{2+} complex



Supplementary Fig S5: ^{31}P NMR spectrum of 1



Supplementary Fig S6: ^{31}P NMR spectrum of 1-Pd $^{2+}$ complex