

Supporting Information

PHENOLIC DERIVATIVES FROM THE STEMS OF *LAGERSTROEMIA INDICA* AND THEIR BIOLOGICAL ACTIVITY

**Kyeong Wan Woo,^a Lalita, Subedi,^b Sun Yeou Kim,^{b,c} Sang Un Choi,^d
Ki Hyun Kim,^a and Kang Ro Lee^{*,a}**

^aNatural Products Laboratory, School of Pharmacy, Sungkyunkwan University; 2066 Seobu-Ro, Jangan-ku, Suwon, Gyeonggi-do, Republic of Korea. ^bGachon Institute of Pharmaceutical Science and ^cCollege of Pharmacy, Gachon University, Incheon 406-799, Republic of Korea. ^dKorea Research Institute of Chemical Technology, Deajeon 305-600, Korea, E-mail : krlee@skku.edu

Supporting Information Contents:

Figure. 1S ^1H NMR data of **1** (CD_3OD , 700 MHz)

Figure. 2S ^{13}C NMR data of **1** (CD_3OD , 175 MHz)

Figure. 3S ^1H - ^1H COSY data of **1** (CD_3OD)

Figure. 4S HMQC data of **1** (CD_3OD)

Figure. 5S HMBC data of **1** (CD_3OD)

Figure. 6S ^1H NMR data of **2** (CD_3OD , 700 MHz)

Figure. 7S ^{13}C NMR data of **2** (CD_3OD , 175 MHz)

Figure. 8S ^1H - ^1H COSY data of **2** (CD_3OD)

Figure. 9S HMQC data of **2** (CD_3OD)

Figure. 10S HMBC data of **2** (CD_3OD)

Figure. 11S ^1H NMR data of **3** (CD_3OD , 700 MHz)

Figure. 12S ^{13}C NMR data of **3** (CD_3OD , 175 MHz)

Figure. 13S ^1H - ^1H COSY data of **3** (CD_3OD)

Figure. 14S HMQC data of **3** (CD_3OD)

Figure. 15S HMBC data of **3** (CD_3OD)

Figure. 16S ^1H NMR data of **4** (CD_3OD , 700 MHz)

Figure. 17S ^{13}C NMR data of **4** (CD_3OD , 175 MHz)

Figure. 18S ^1H - ^1H COSY data of **4** (CD_3OD)

Figure. 19S HMQC data of **4** (CD_3OD)

Figure. 20S HMBC data of **4** (CD_3OD)

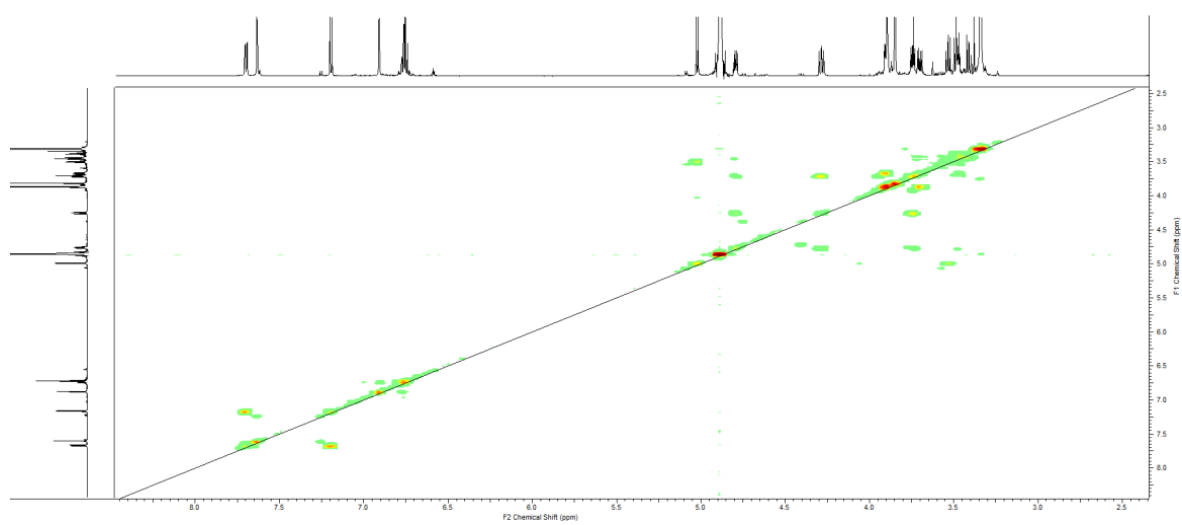


Figure. 3S ^1H - ^1H COSY data of **1** (CD_3OD)

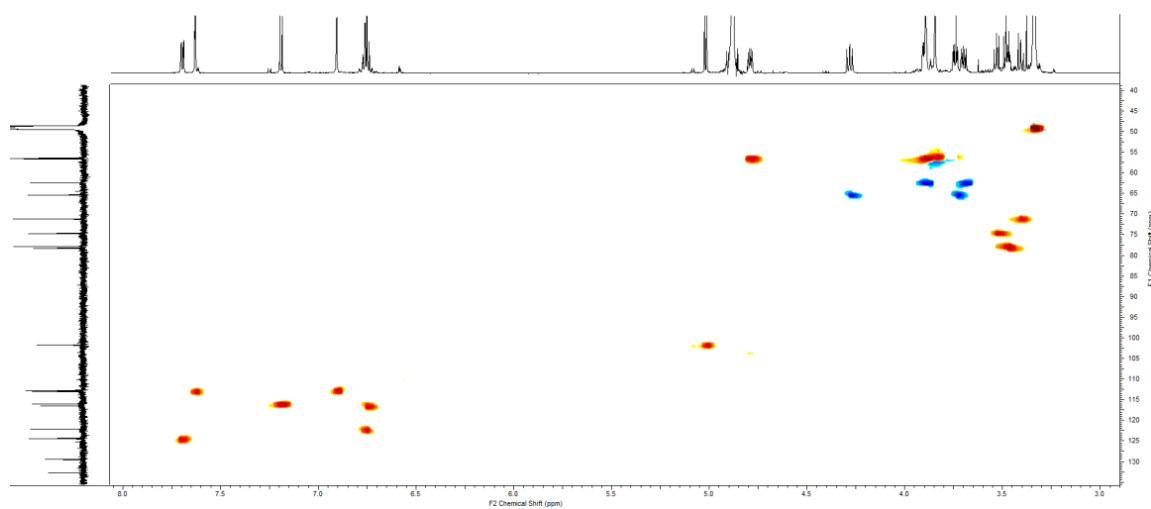


Figure. 4S HMQC data of **1** (CD_3OD)

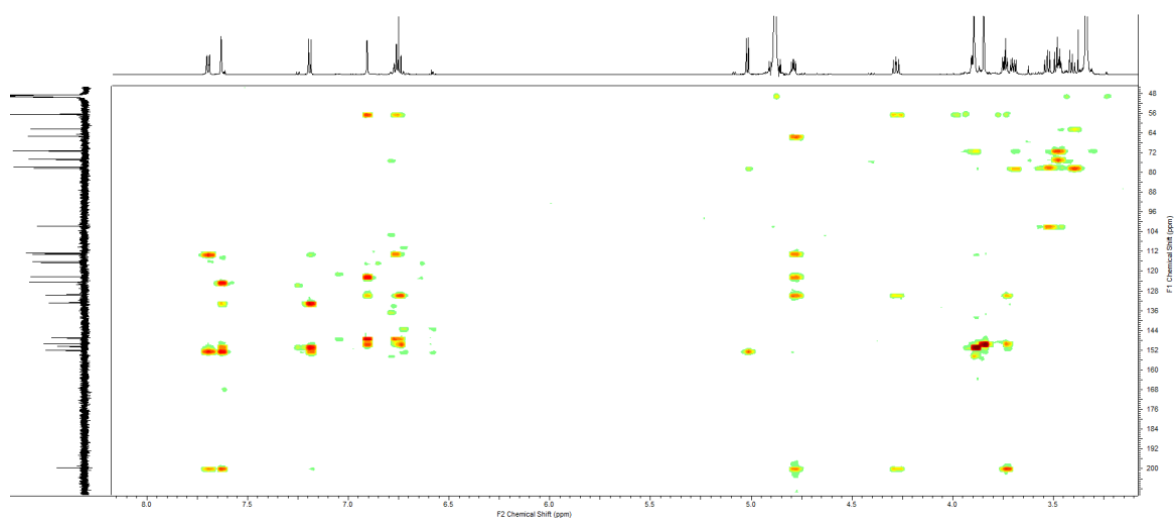


Figure. 5S HMBC data of **1** (CD₃OD)

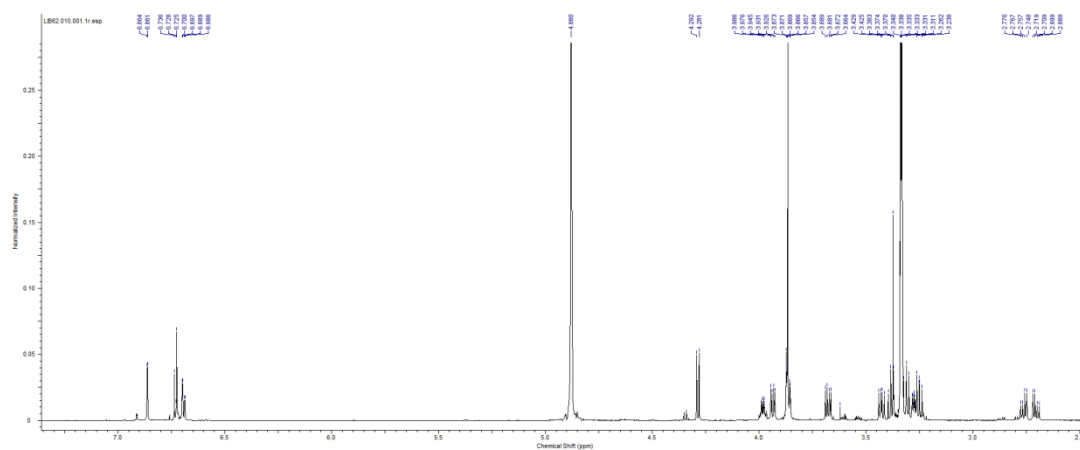


Figure. 6S ¹H NMR data of **2** (CD₃OD, 700 MHz)

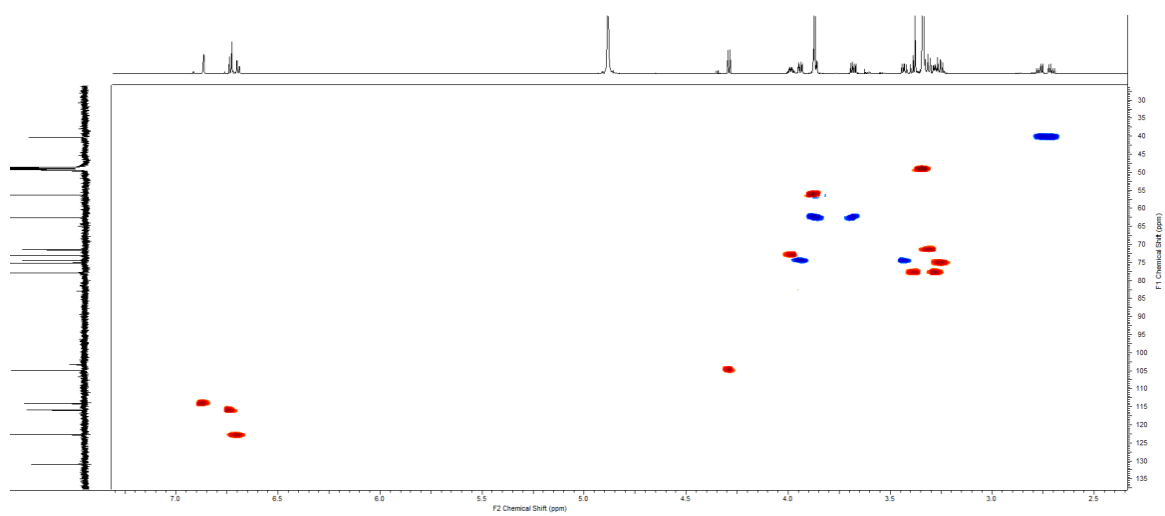


Figure. 9S HMQC data of **2** (CD₃OD)

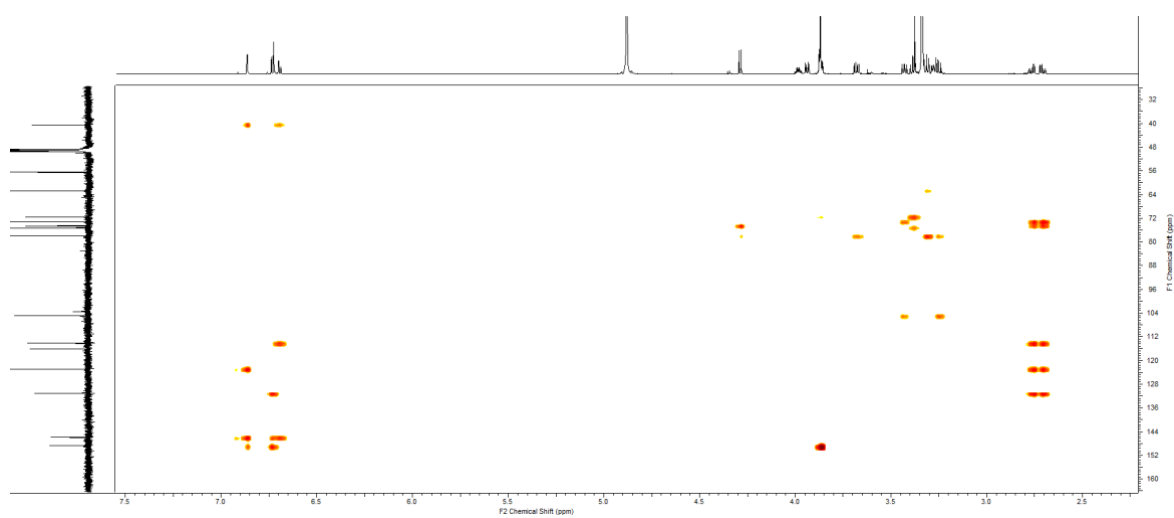


Figure. 10S HMBC data of **2** (CD₃OD)

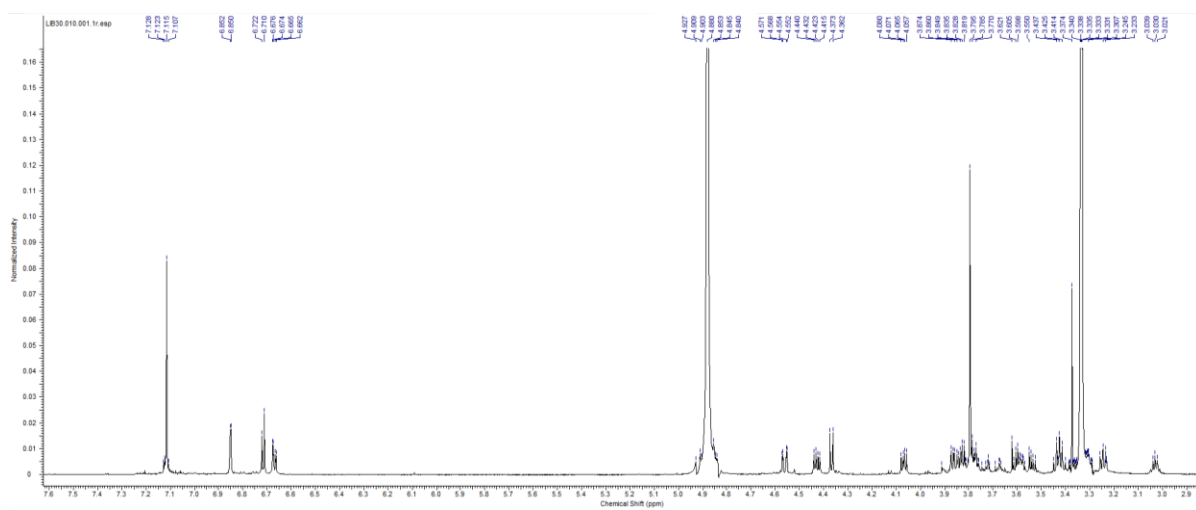
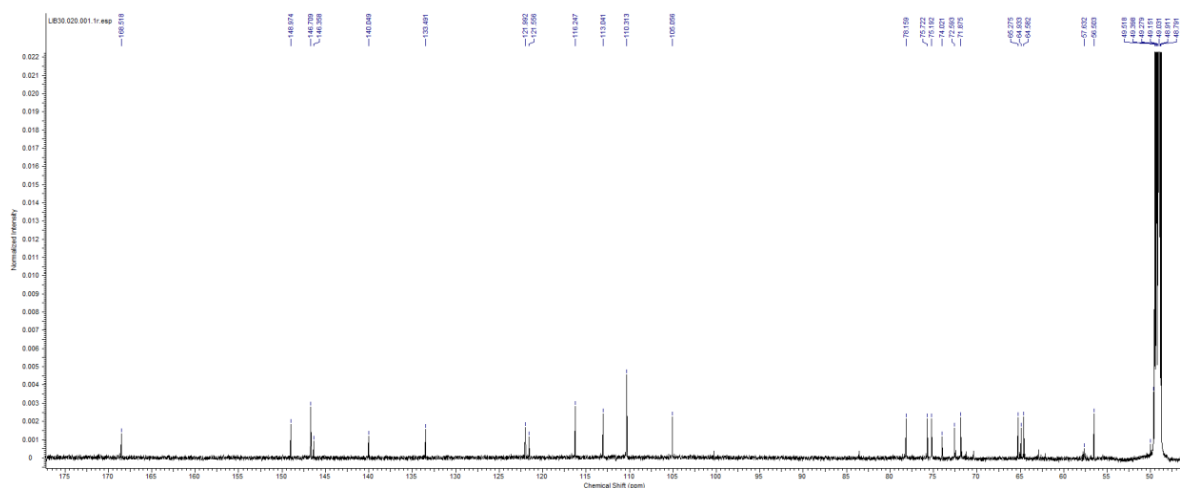


Figure. 11S ^1H NMR data of **3** (CD_3OD , 700 MHz)



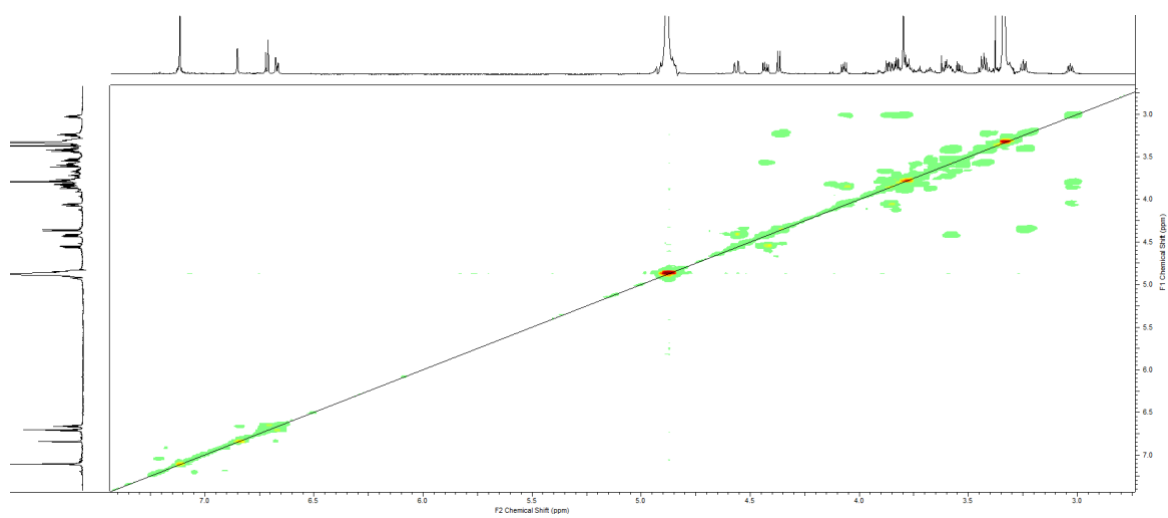


Figure. 13S ^1H - ^1H COSY data of **3** (CD_3OD)

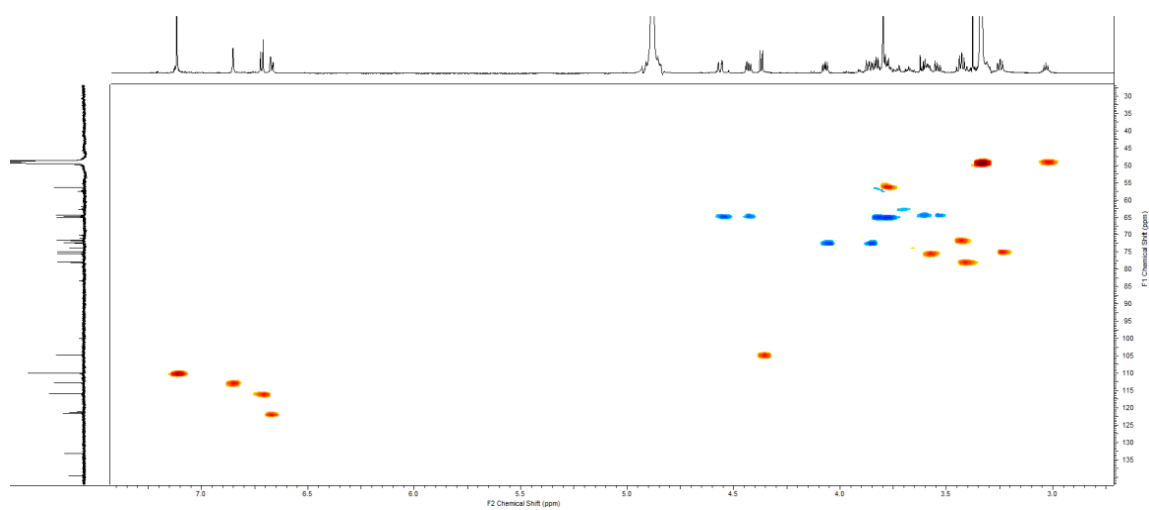


Figure. 14S HMQC data of **3** (CD_3OD)

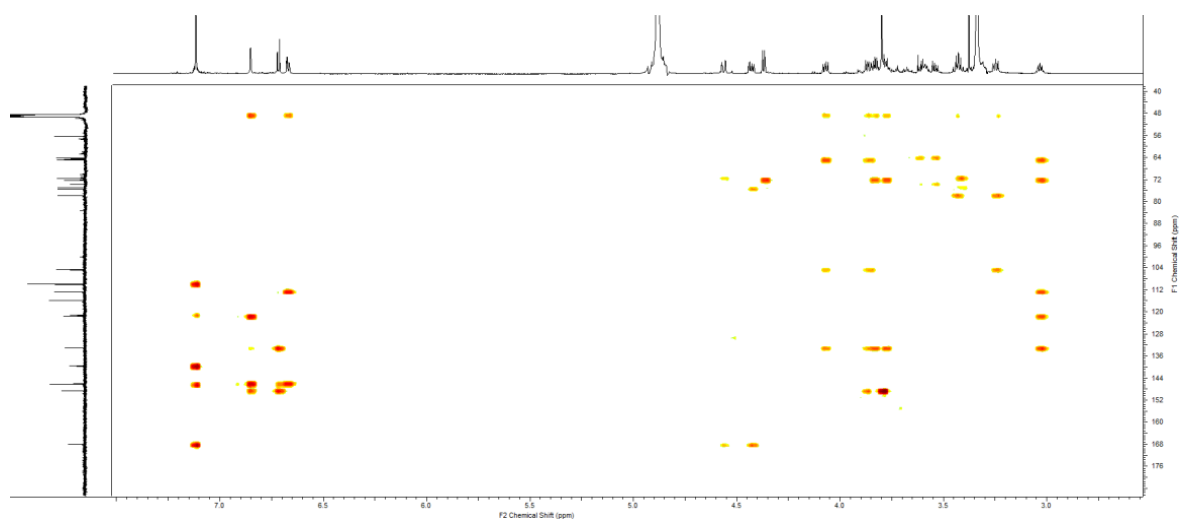


Figure. 15S HMBC data of **3** (CD₃OD)

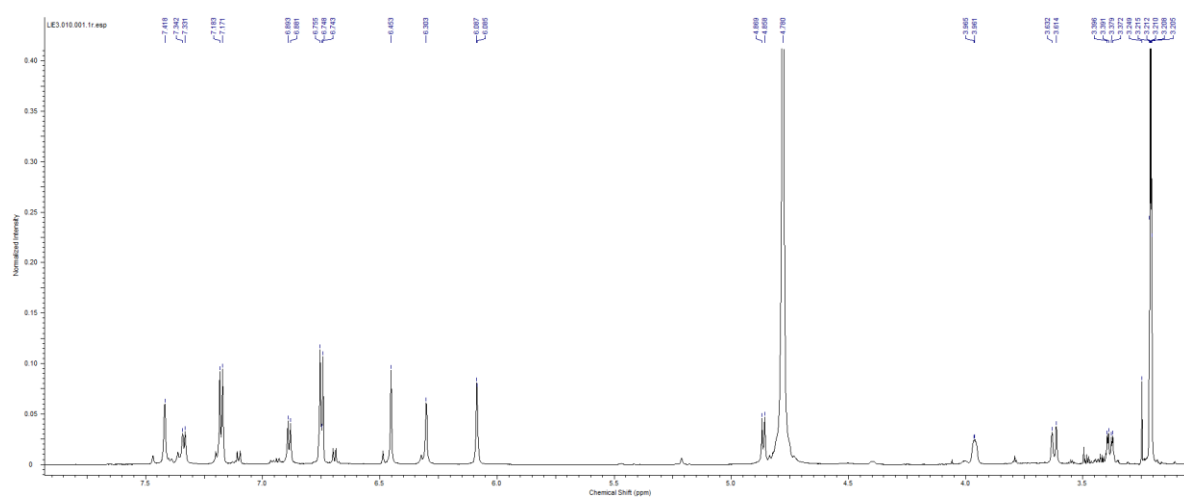


Figure. 16S ¹H NMR data of **4** (CD₃OD, 700 MHz)

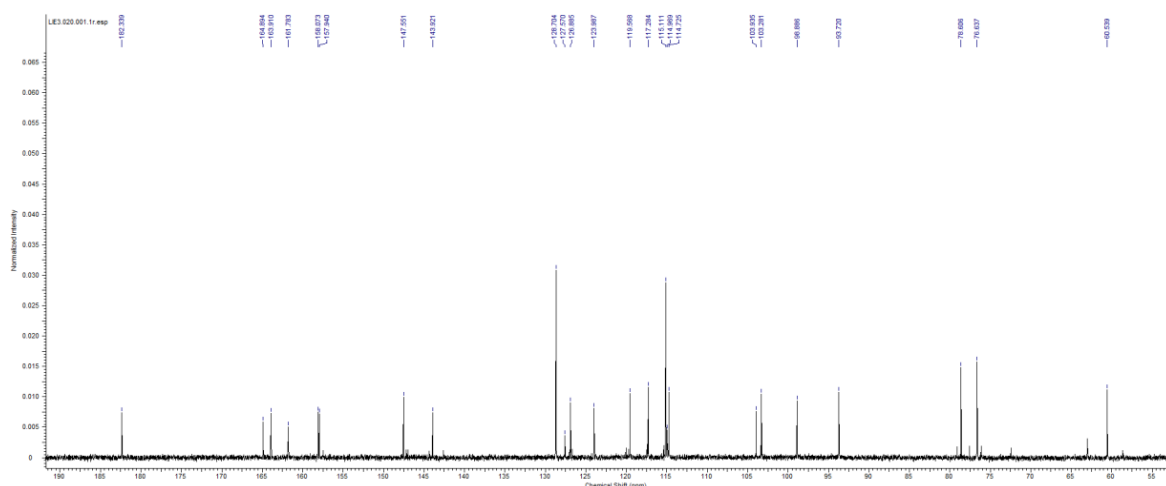


Figure. 17S ^{13}C NMR data of **4** (CD_3OD , 175 MHz)

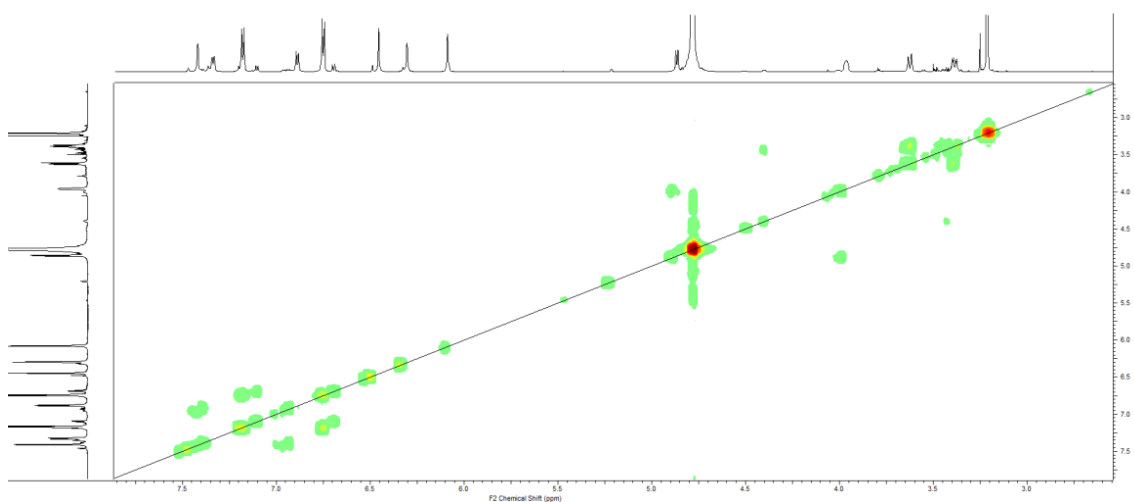


Figure. 18S ^1H - ^1H COSY data of **4** (CD_3OD)

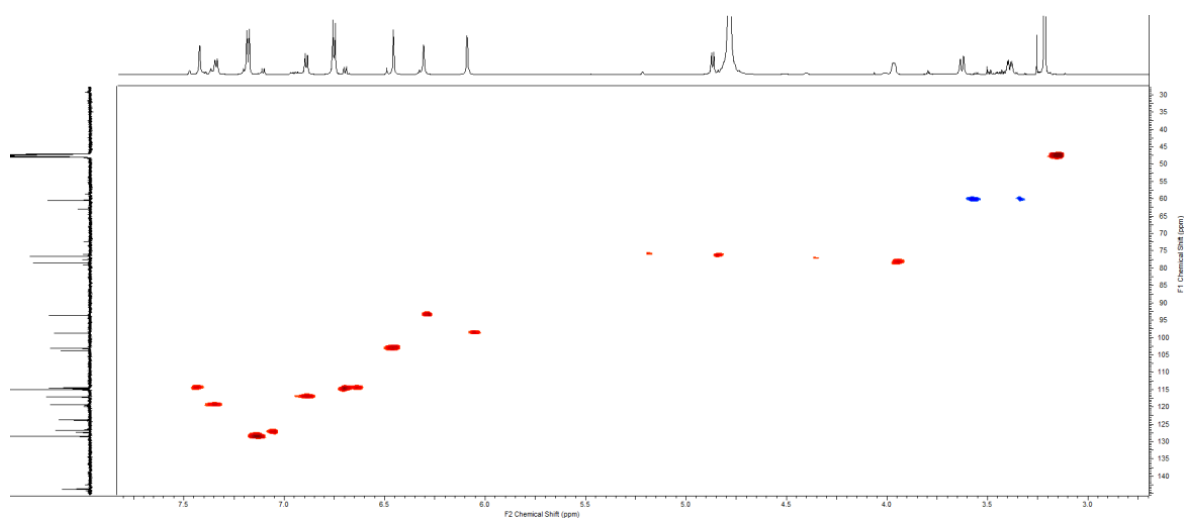


Figure. 19S HMQC data of **4** (CD₃OD)

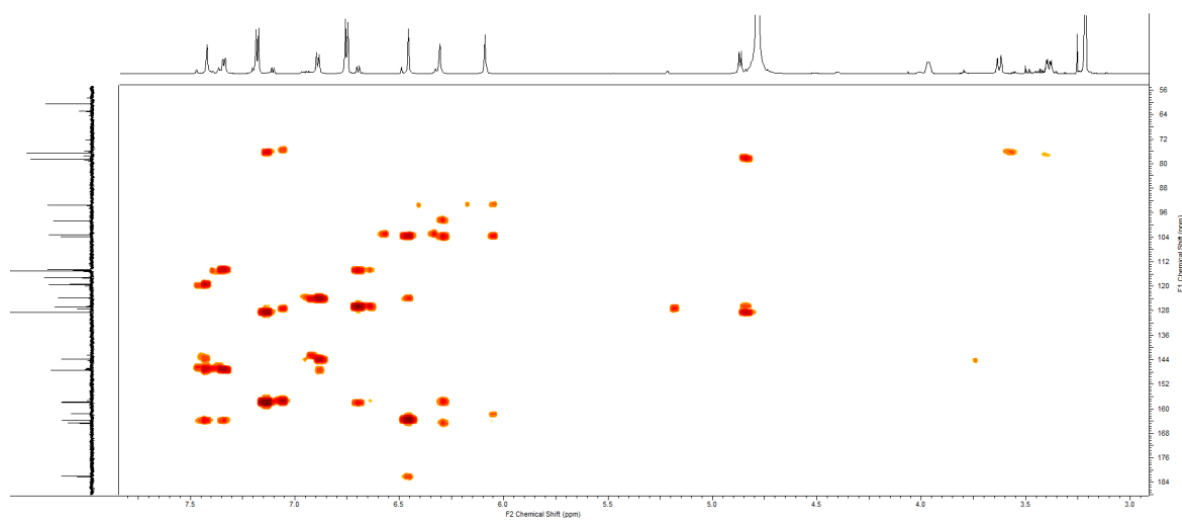


Figure. 20S HMBC data of **4** (CD₃OD)