

2#30 RT: 0.23 AV: 1 NL: 3.59E7
T: FTMS + c ESI Full ms [100.00-1500.00]

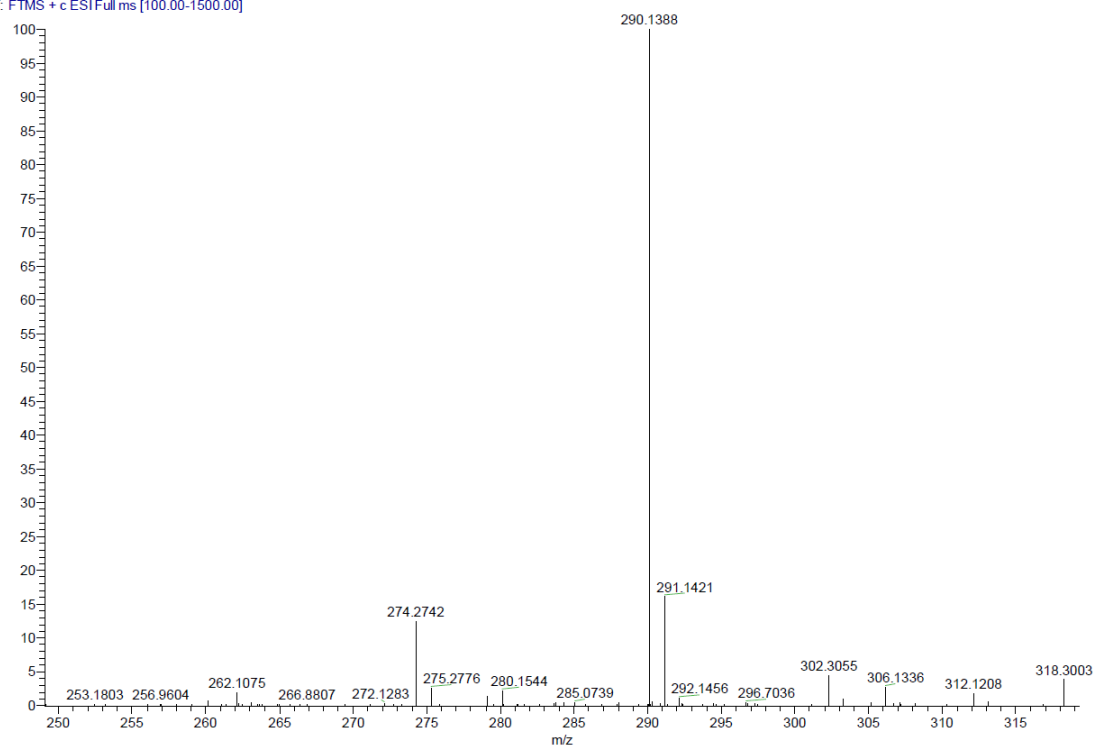


Fig.1. MS of compound 5a

2#39 RT: 0.34 AV: 1 NL: 4.16E7
T: FTMS + c ESI Full ms [100.00-1000.00]

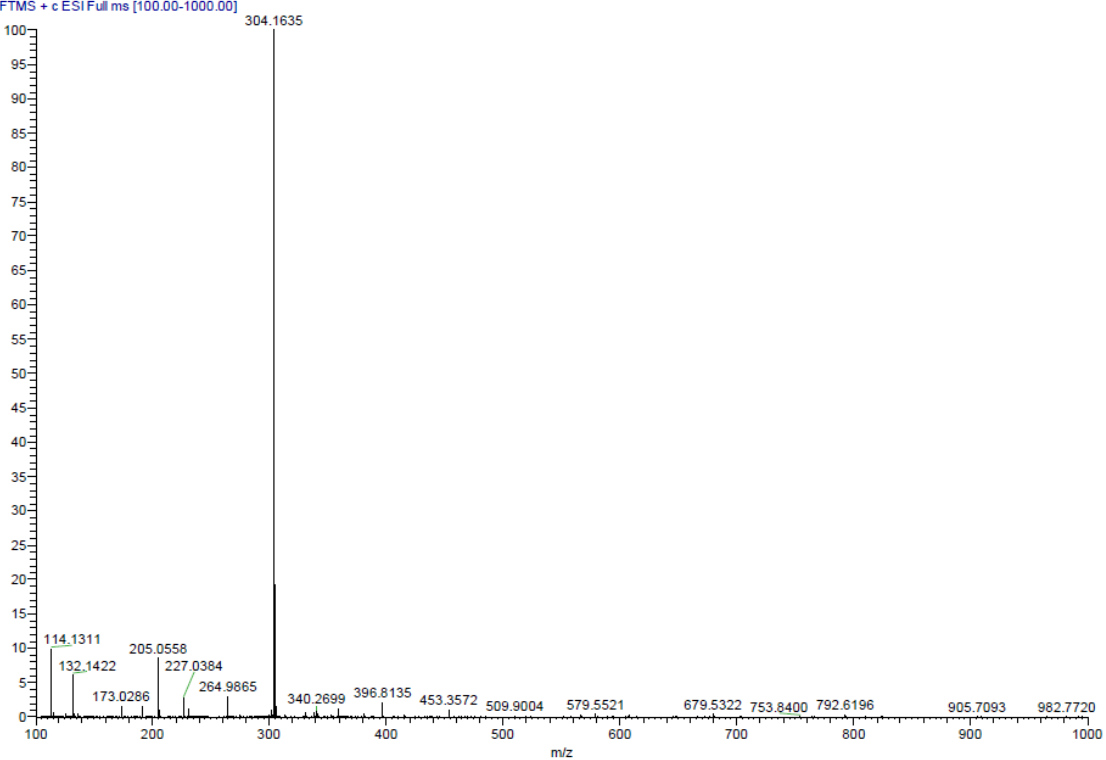


Fig.1. MS of compound 5b

3 #26 RT: 0.21 AV: 1 NL: 8.71E5
T: FTMS + c ESI Full ms [100.00-1000.00]

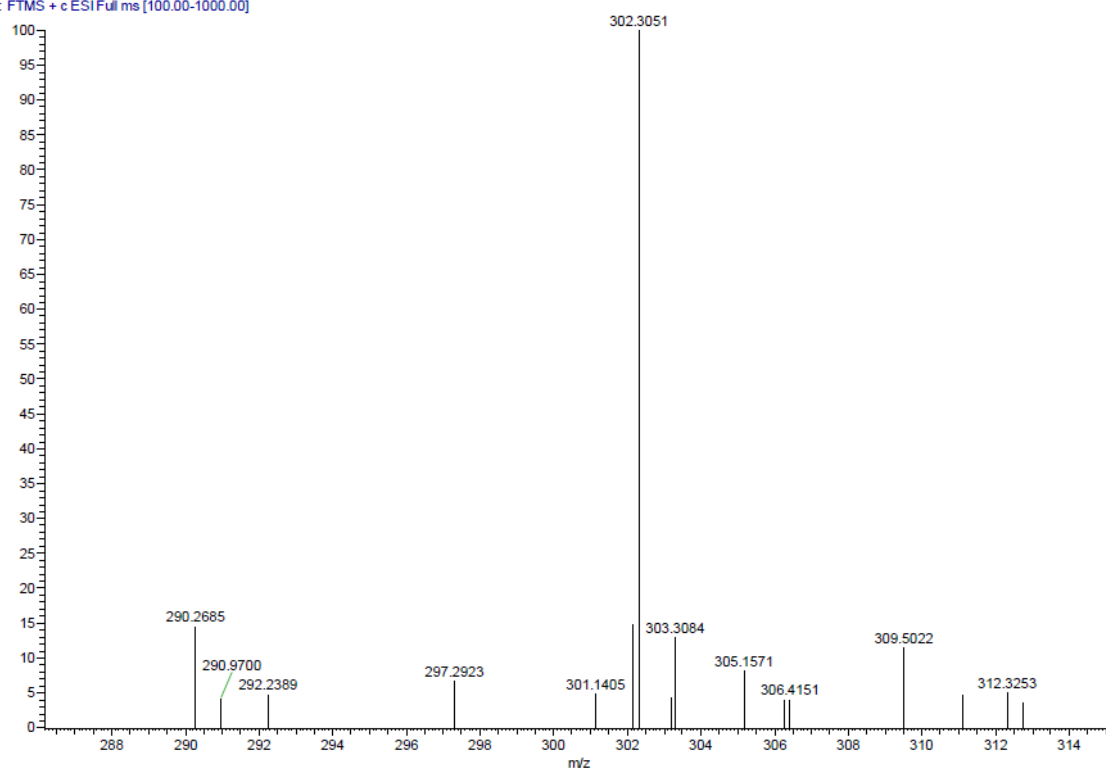


Fig.3. MS of compound 5c

H1 #22 RT: 0.31 AV: 1 NL: 3.62E6
T: FTMS + c ESI Full ms [100.00-800.00]

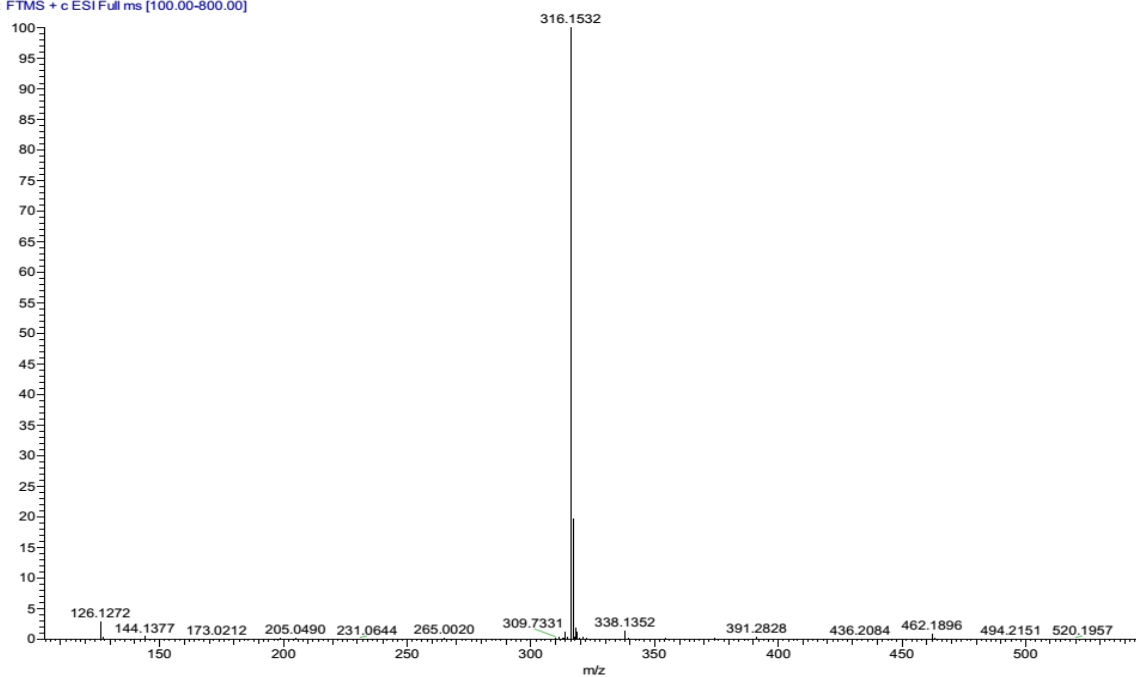


Fig.4. MS of compound 5d

hp3 #28 RT: 0.23 AV: 1 NL: 2.67E6
T: FTMS + c ESI Full ms [100.00-1200.00]

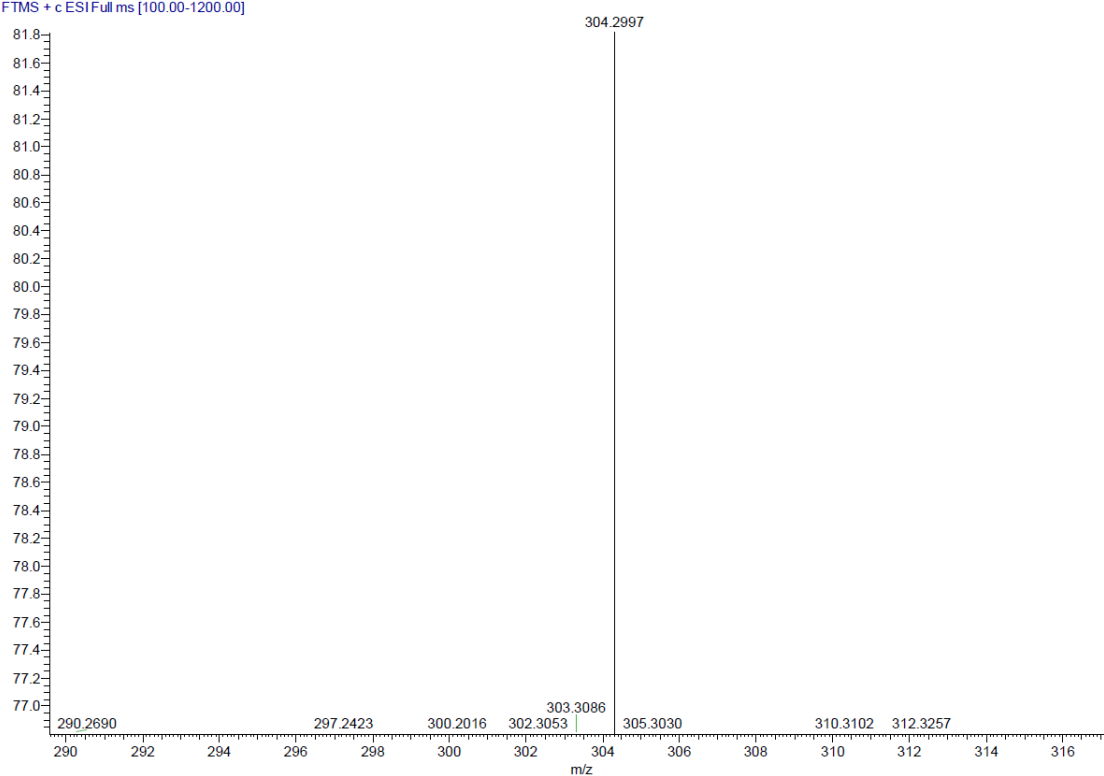


Fig.5. MS of compound 5e

5 #26 RT: 0.21 AV: 1 NL: 7.39E6
T: FTMS + c ESI Full ms [100.00-1000.00]

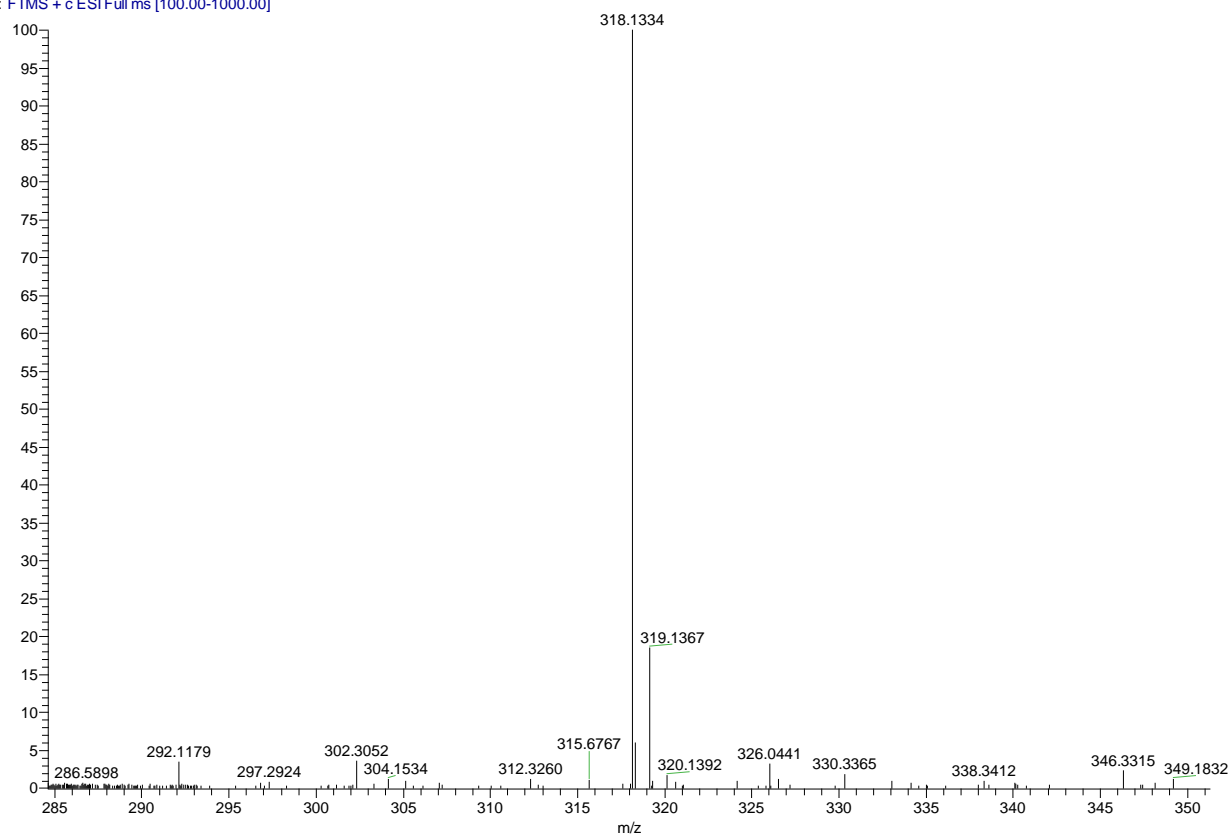


Fig.6. MS of compound 5f

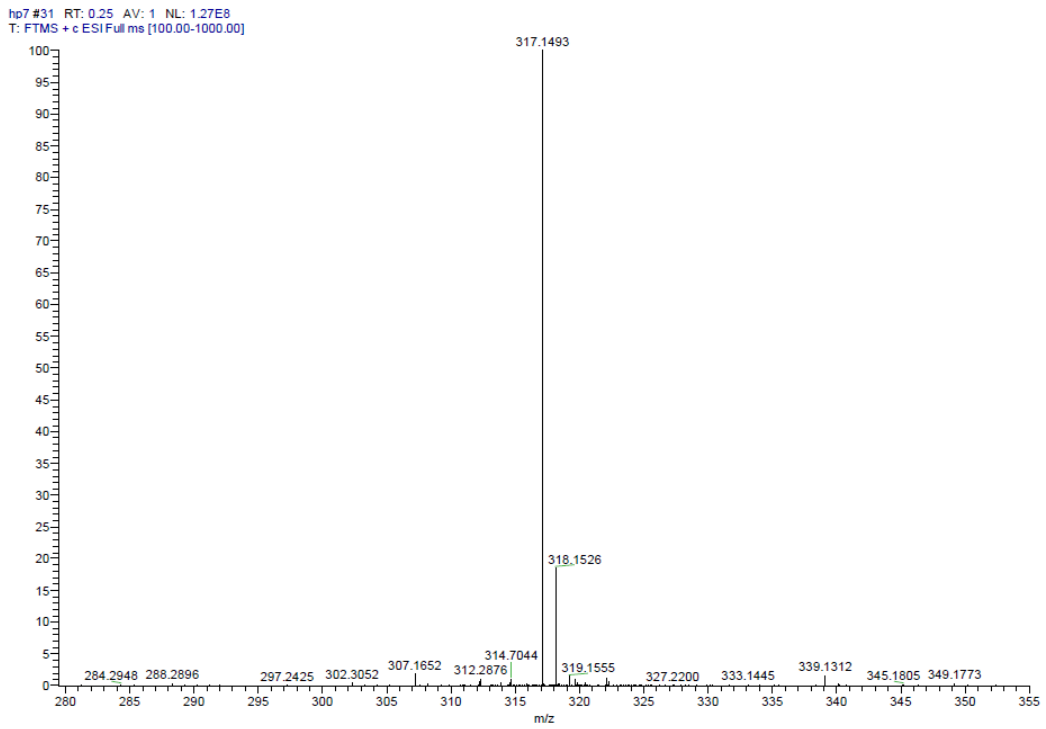
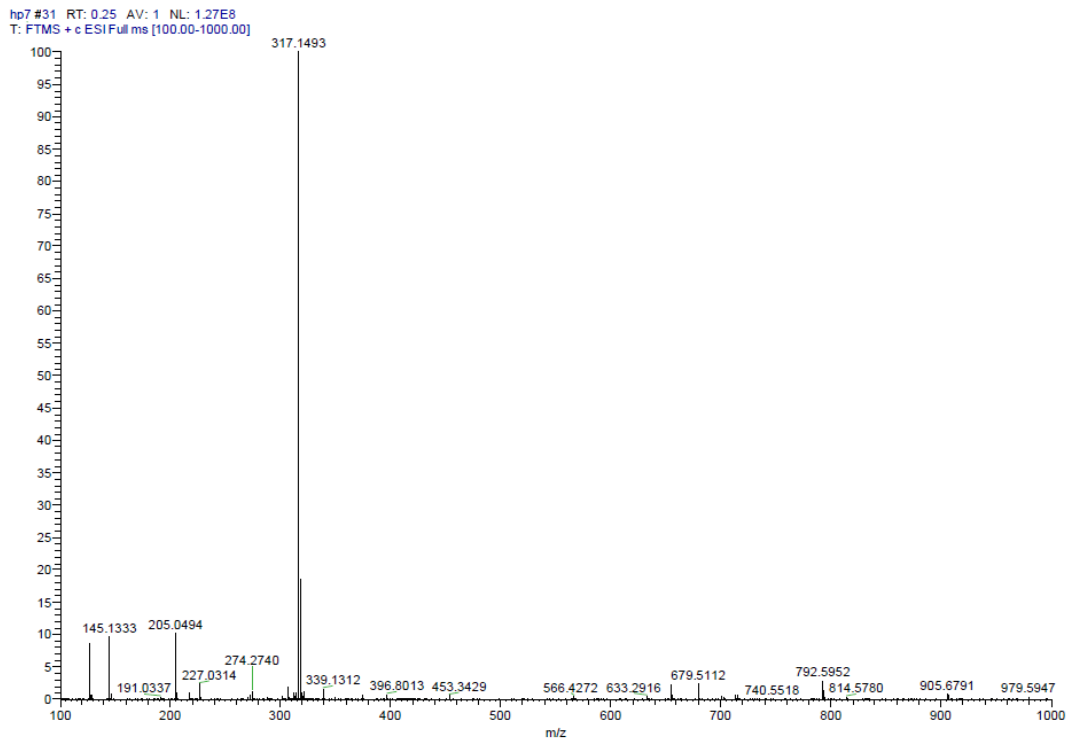


Fig.7. MS of compound **5g**

h8 #26 RT: 0.21 AV: 1 NL: 1.34E8
T: FTMS + c ESI Full ms [50.00-1000.00]

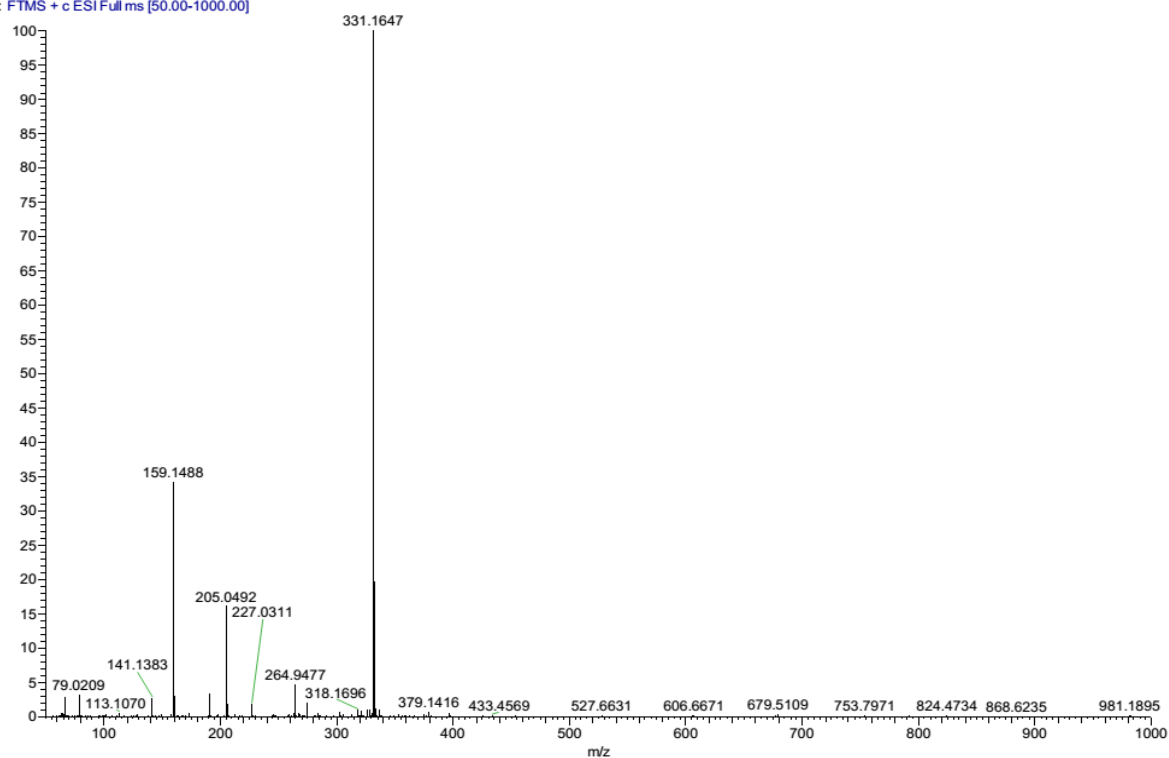


Fig.8. MS of compound 5h

20 #28-42 RT: 0.22-0.33 AV: 15 NL: 1.33E8
T: FTMS + c ESI Full ms [200.00-1200.00]

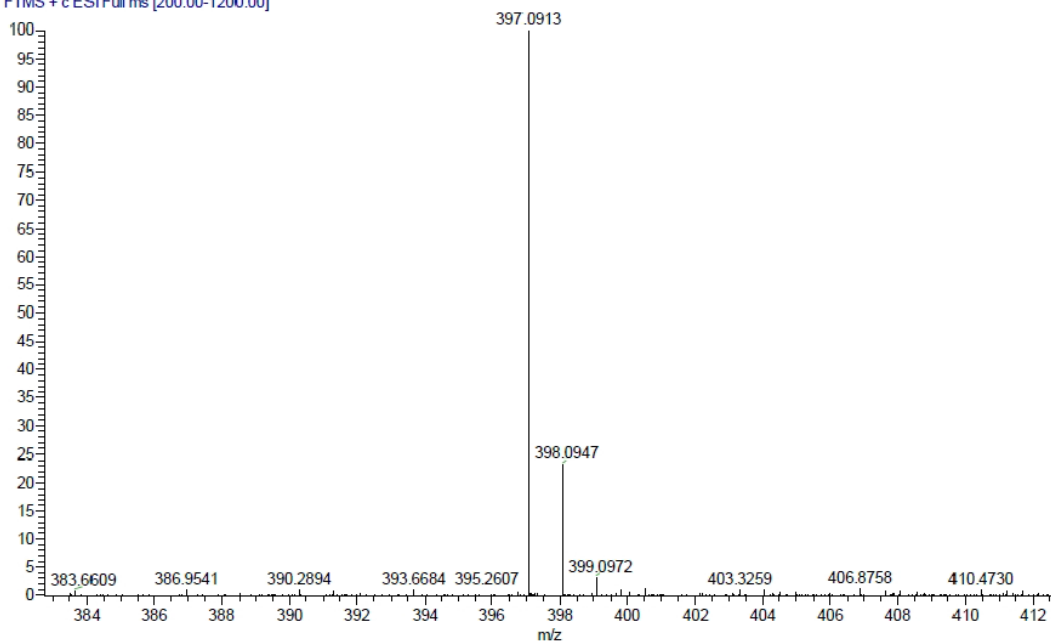


Fig.9. MS of compound 5i

21 #31-42 RT: 0.24-0.32 AV: 12 NL: 2.33E8
T: FTMS + c ESI Full ms [200.00-1200.00]

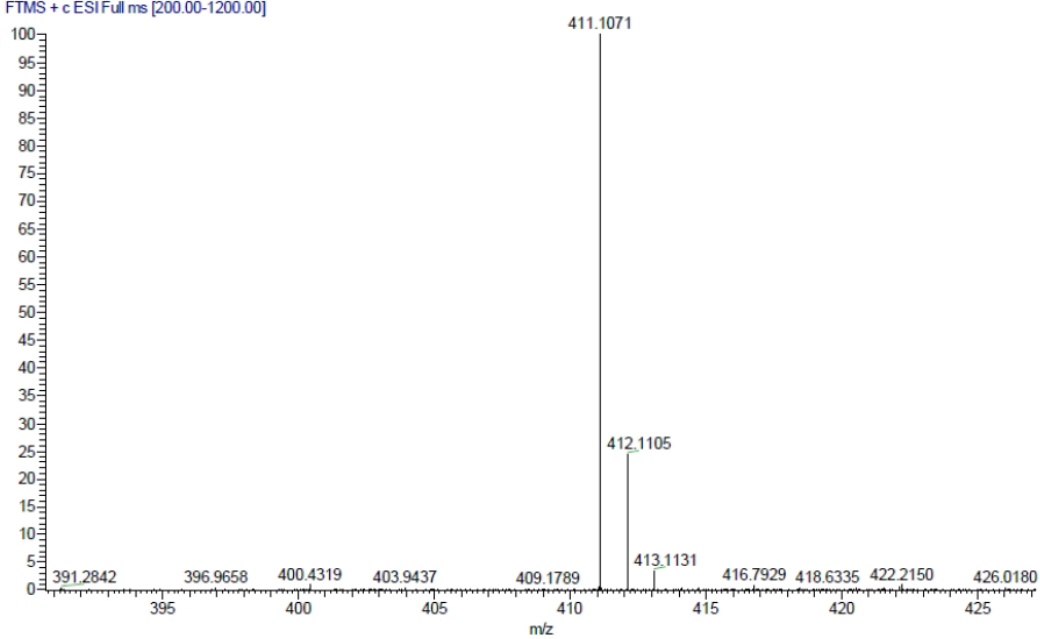


Fig.10. MS of compound 5j

22 #28-43 RT: 0.22-0.33 AV: 16 NL: 1.52E8
T: FTMS + c ESI Full ms [200.00-1200.00]

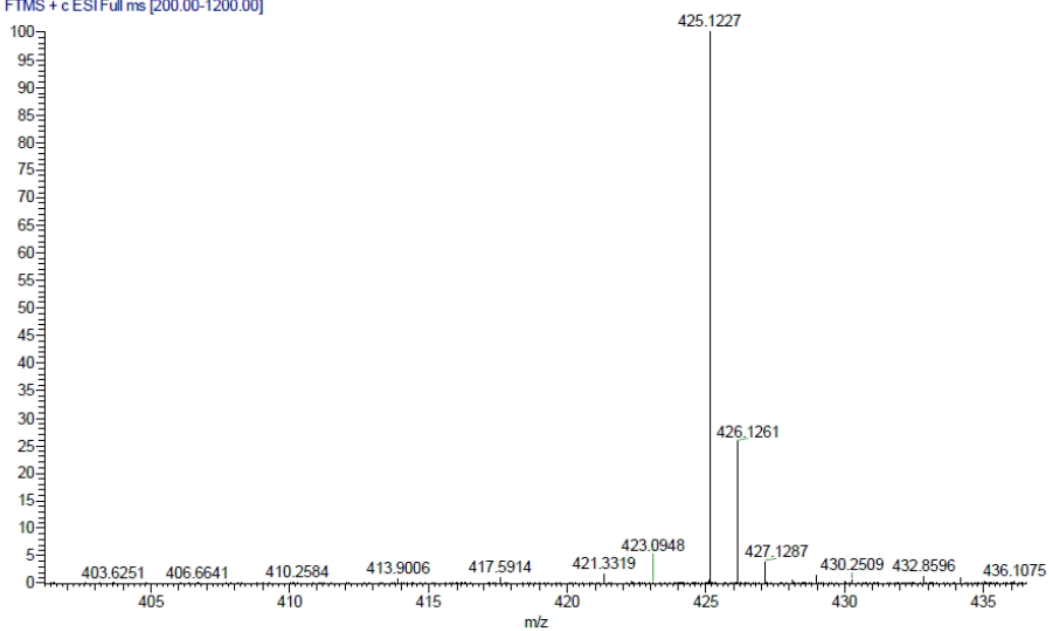


Fig.11. MS of compound 5k

h4 #27 RT: 0.21 AV: 1 NL: 6.54E7
T: FTMS + c ESI Full ms [50.00-1000.00]

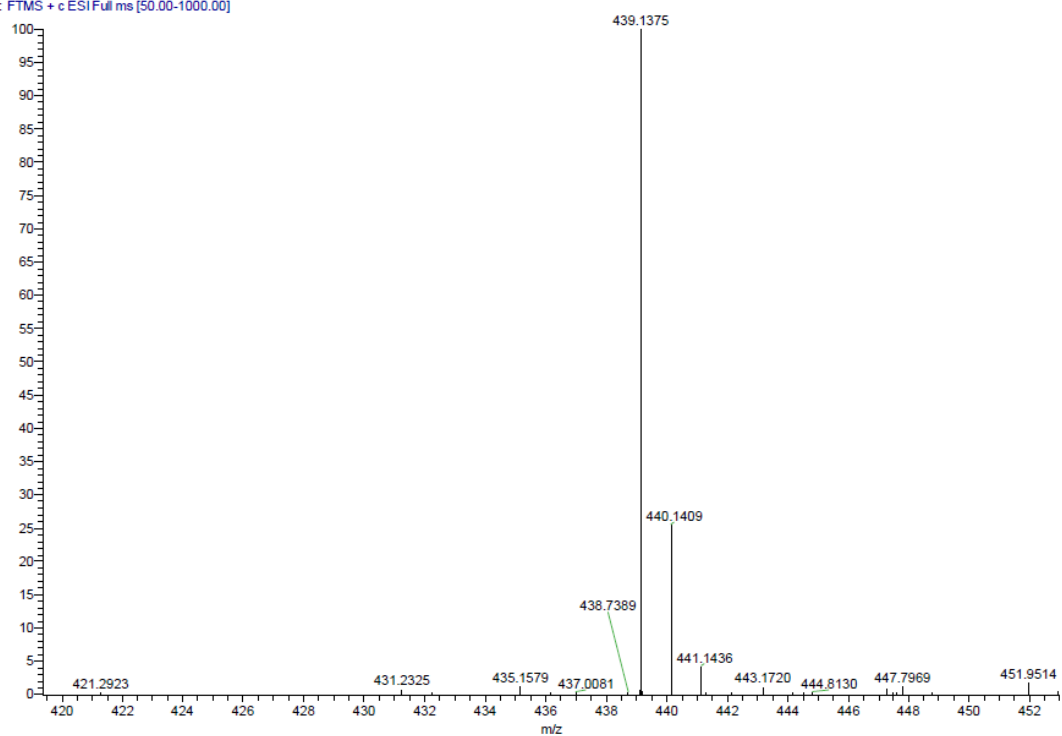


Fig.12. MS of compound 5l

23 #29-41 RT: 0.22-0.32 AV: 13 NL: 2.14E8
T: FTMS + c ESI Full ms [200.00-1200.00]

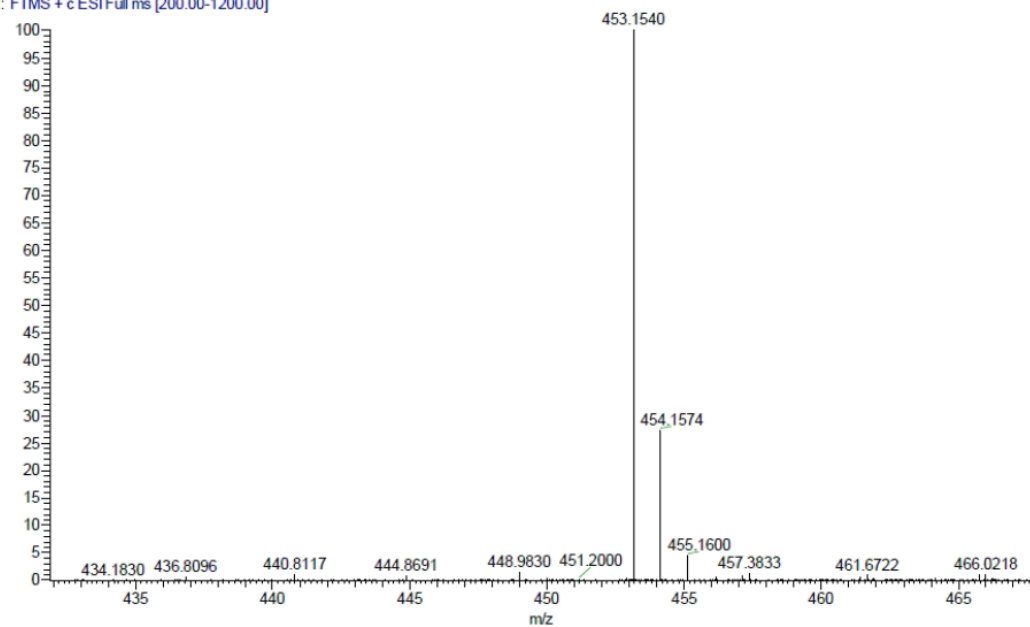


Fig.13. MS of compound 5m