

Supporting Information

PALLADIUM-CATALYZED HOMO-COUPPLING OF HETEROARYLSULFONIUMS VIA BORYLATION/SUZUKI-MIYAUURA COUPLING SEQUENCE

Hiroko Minami, Keisuke Nogi, and Hideki Yorimitsu*

Department of Chemistry, Graduate School of Science, Kyoto University

Sakyo-ku, Kyoto 606-8502, Japan

*E-mail: yori@kuchem.kyoto-u.ac.jp

Table of Contents

NMR Spectra

S2-17

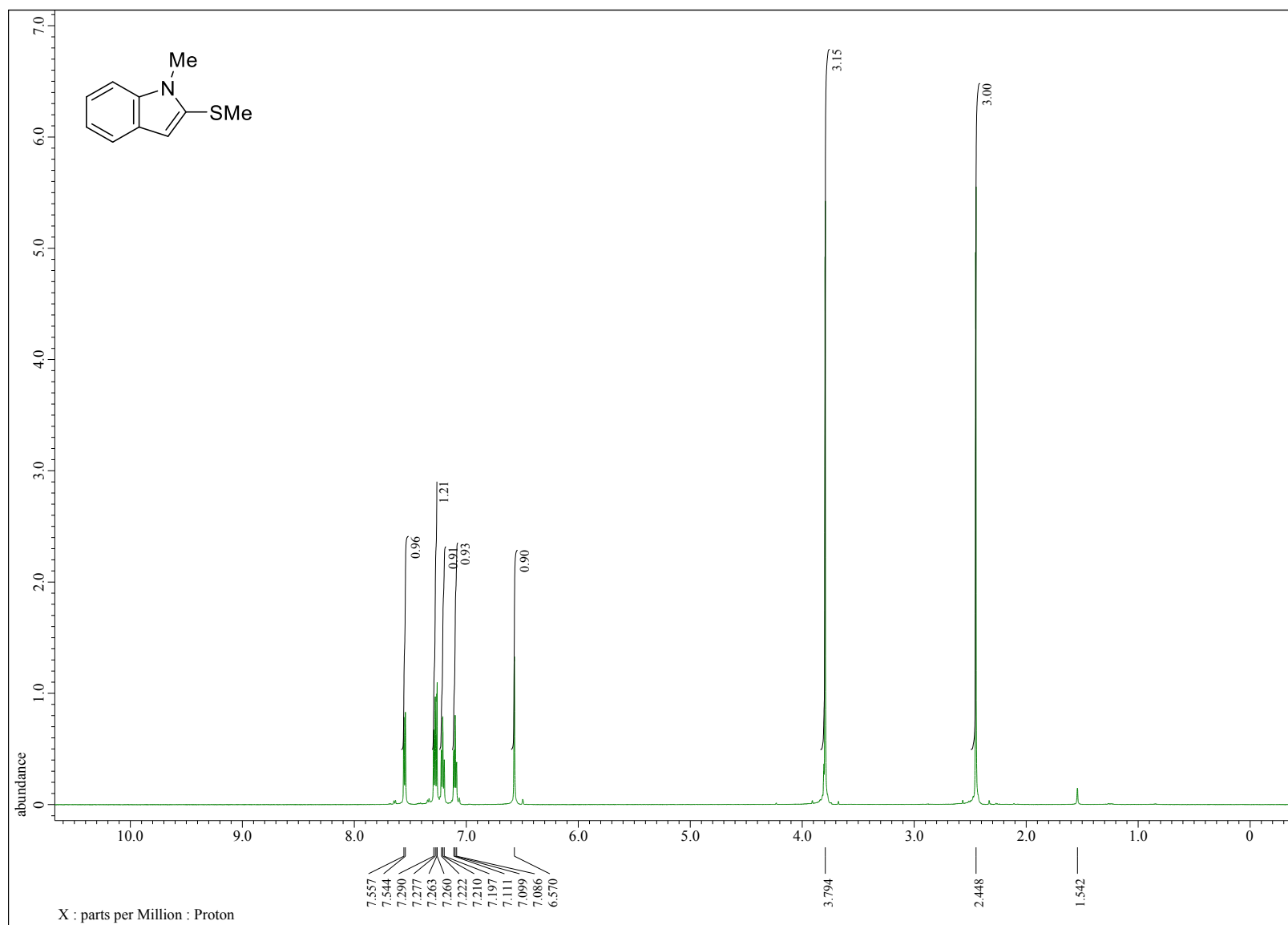


Figure S 1. ¹H NMR spectrum of **1b**

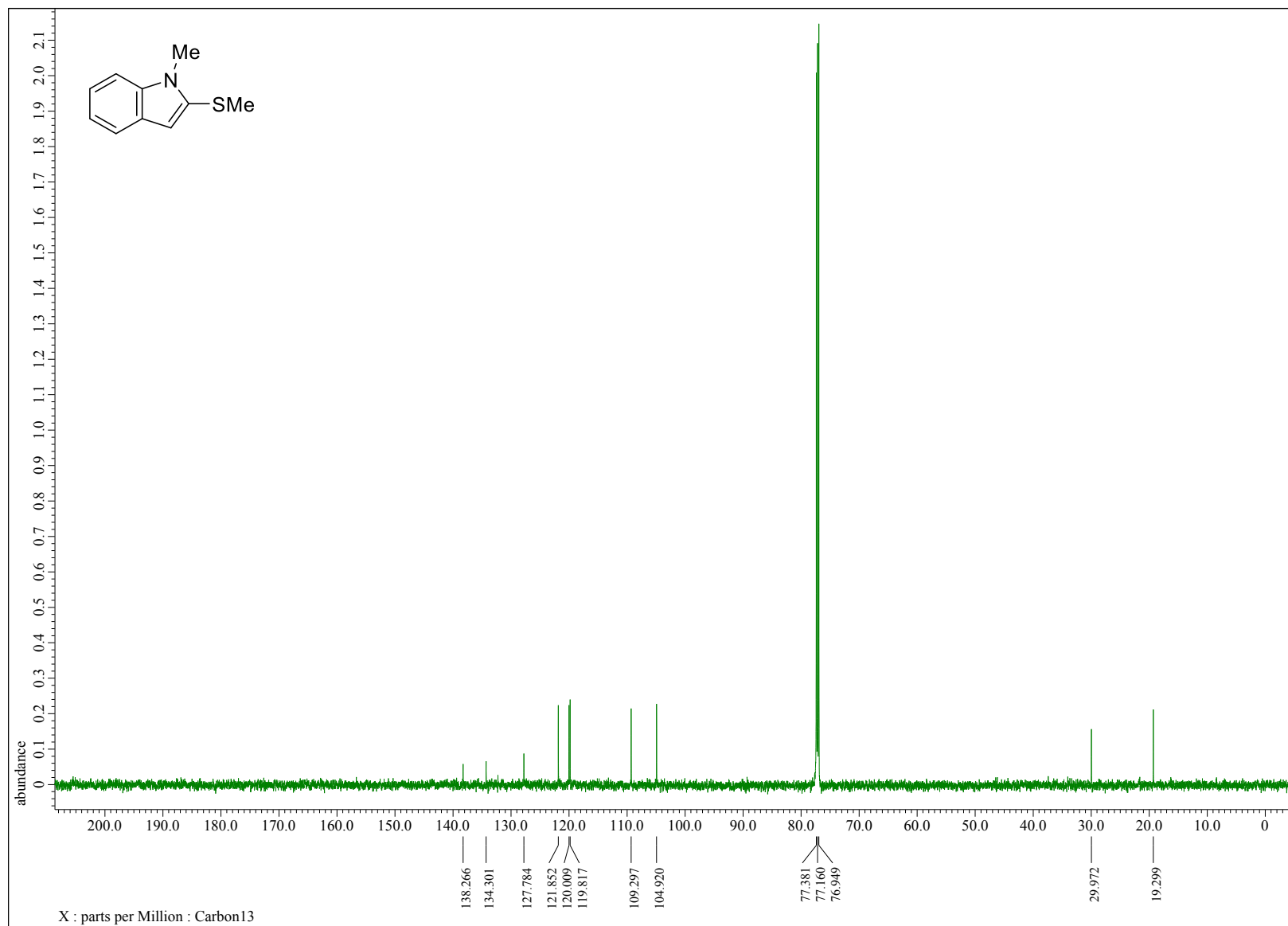


Figure S 2. ^{13}C NMR spectrum of 1b

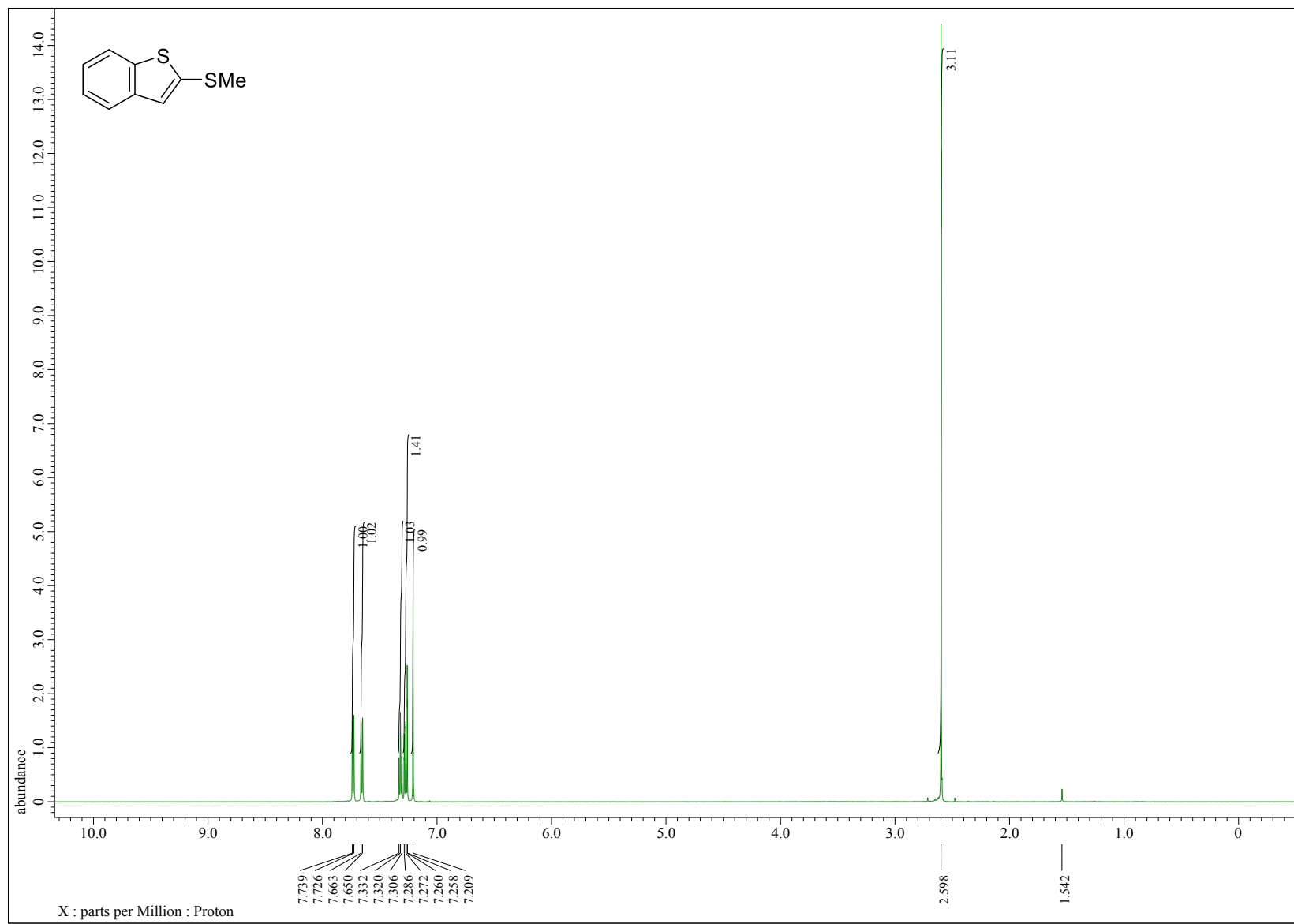


Figure S 3. ¹H NMR spectrum of **1c**

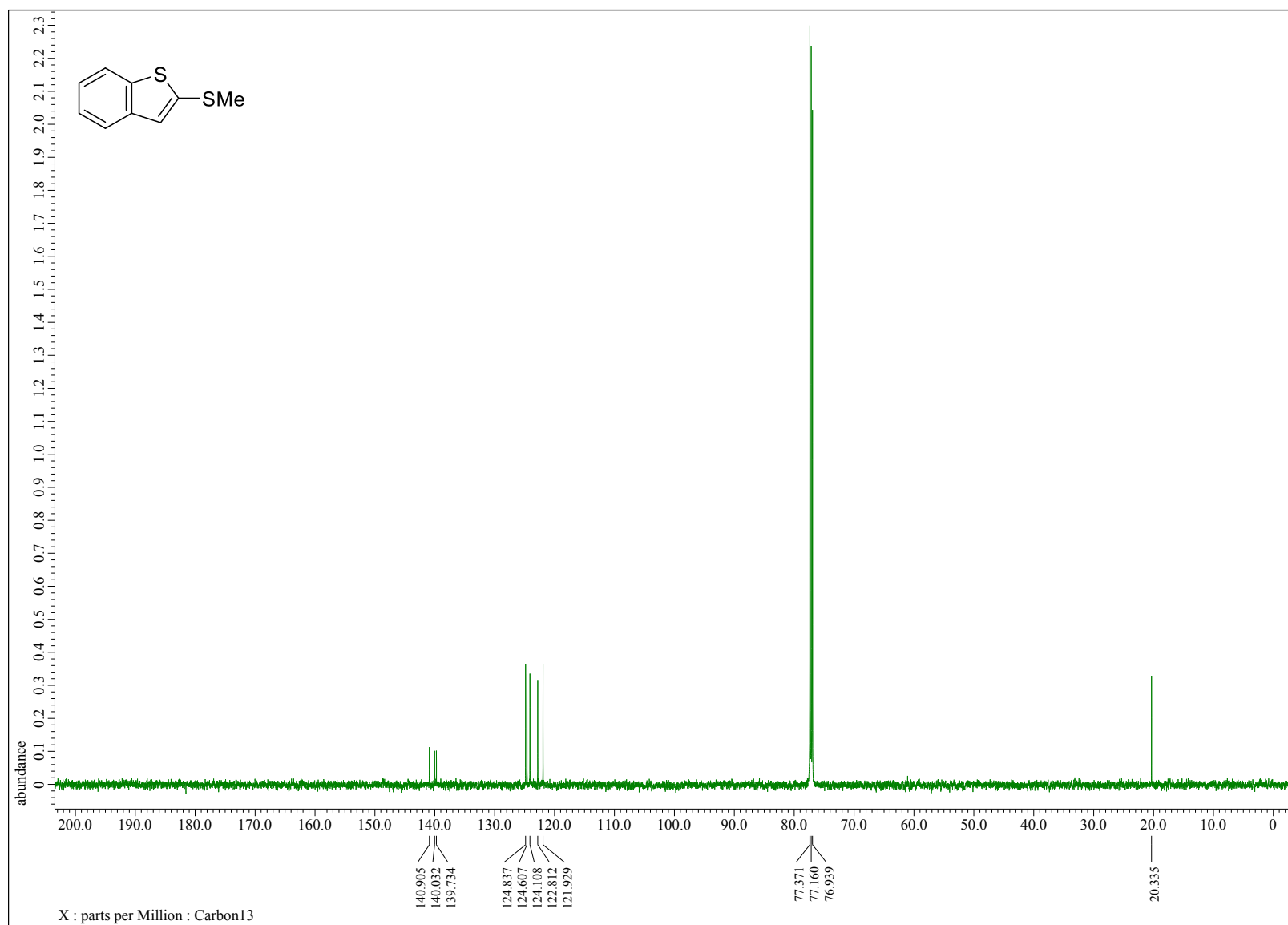


Figure S 4. ¹³C NMR spectrum of 1c

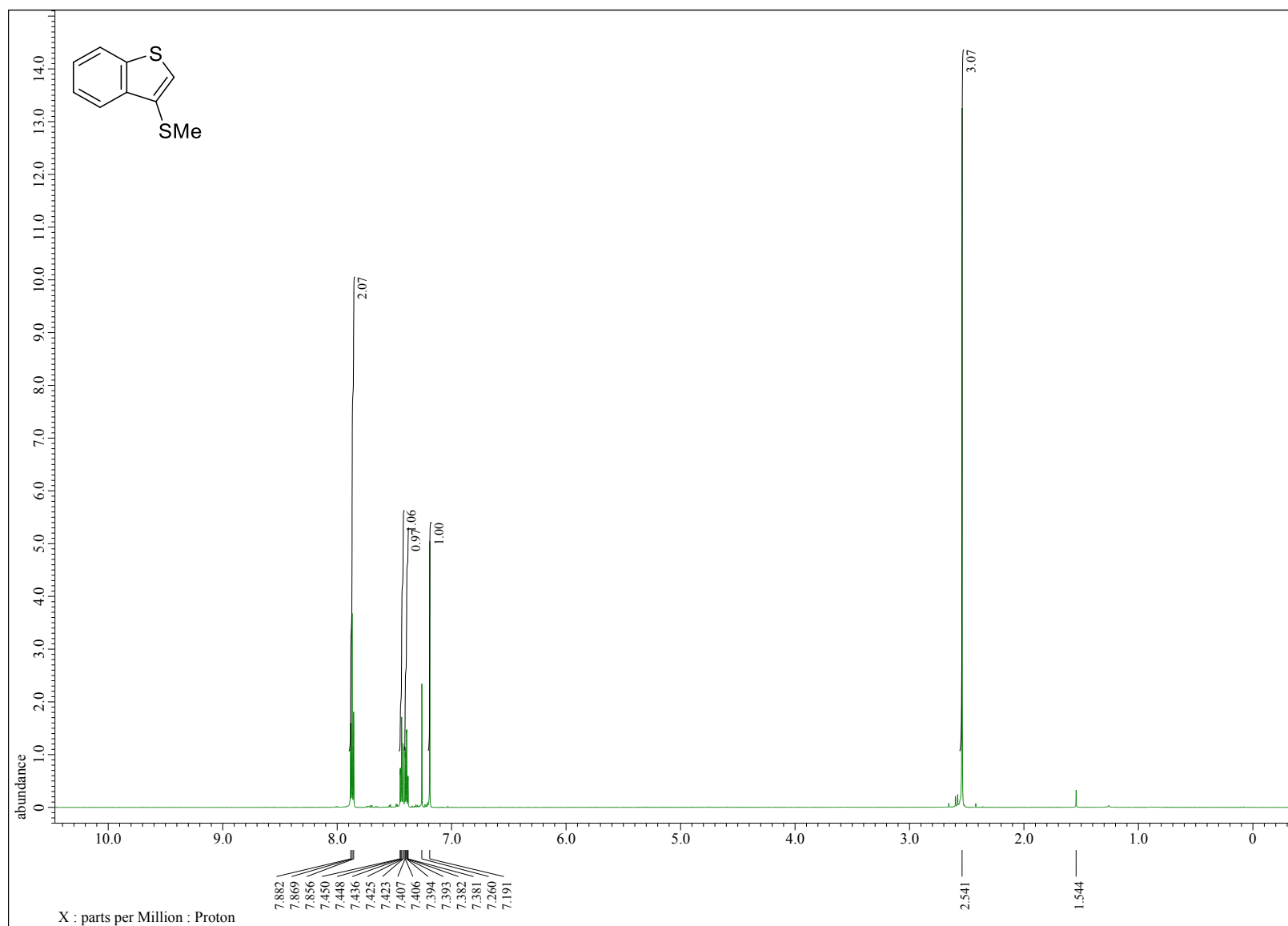


Figure S 5. ¹H NMR spectrum of **1e**

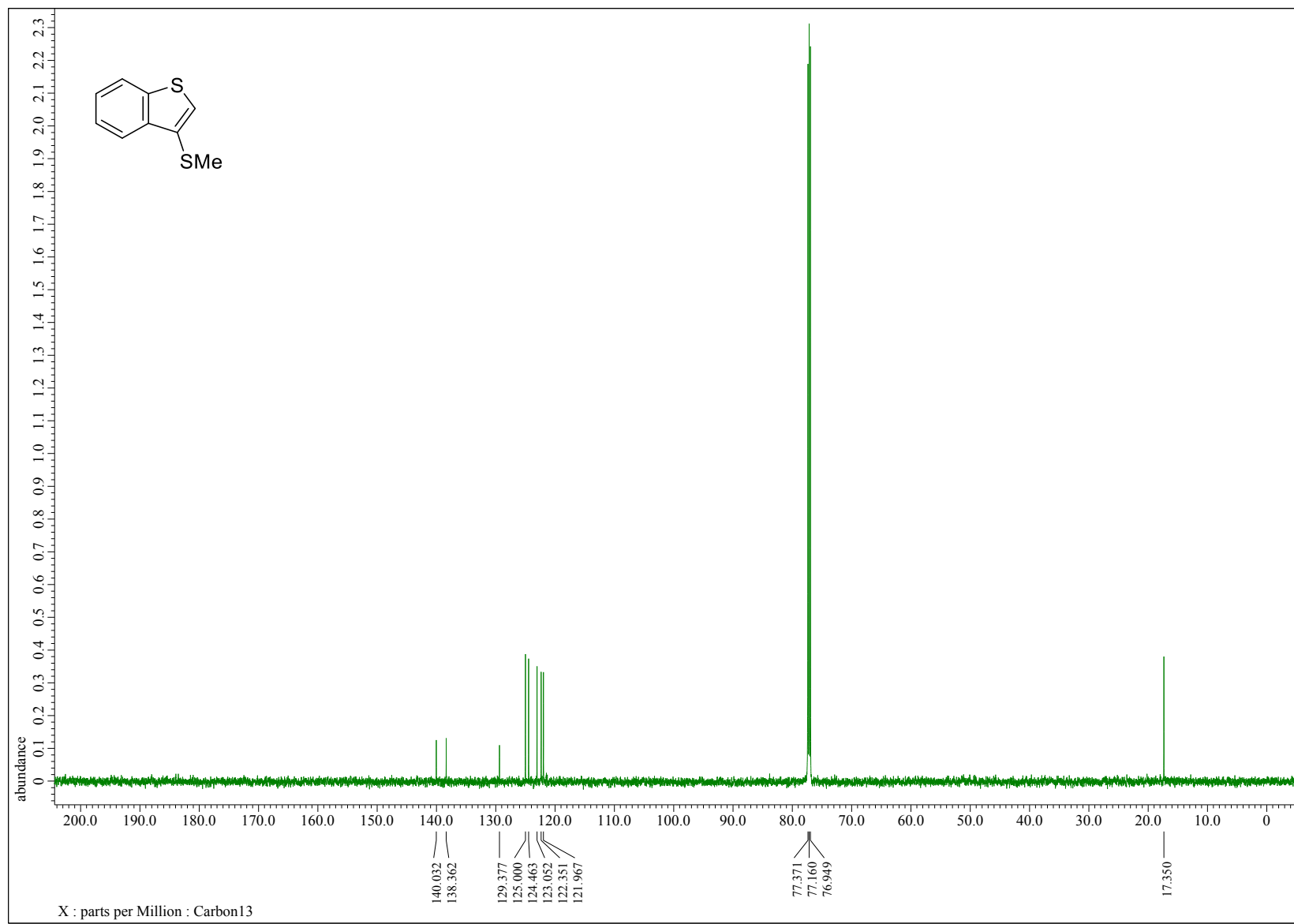


Figure S 6. ¹³C NMR spectrum of 1e

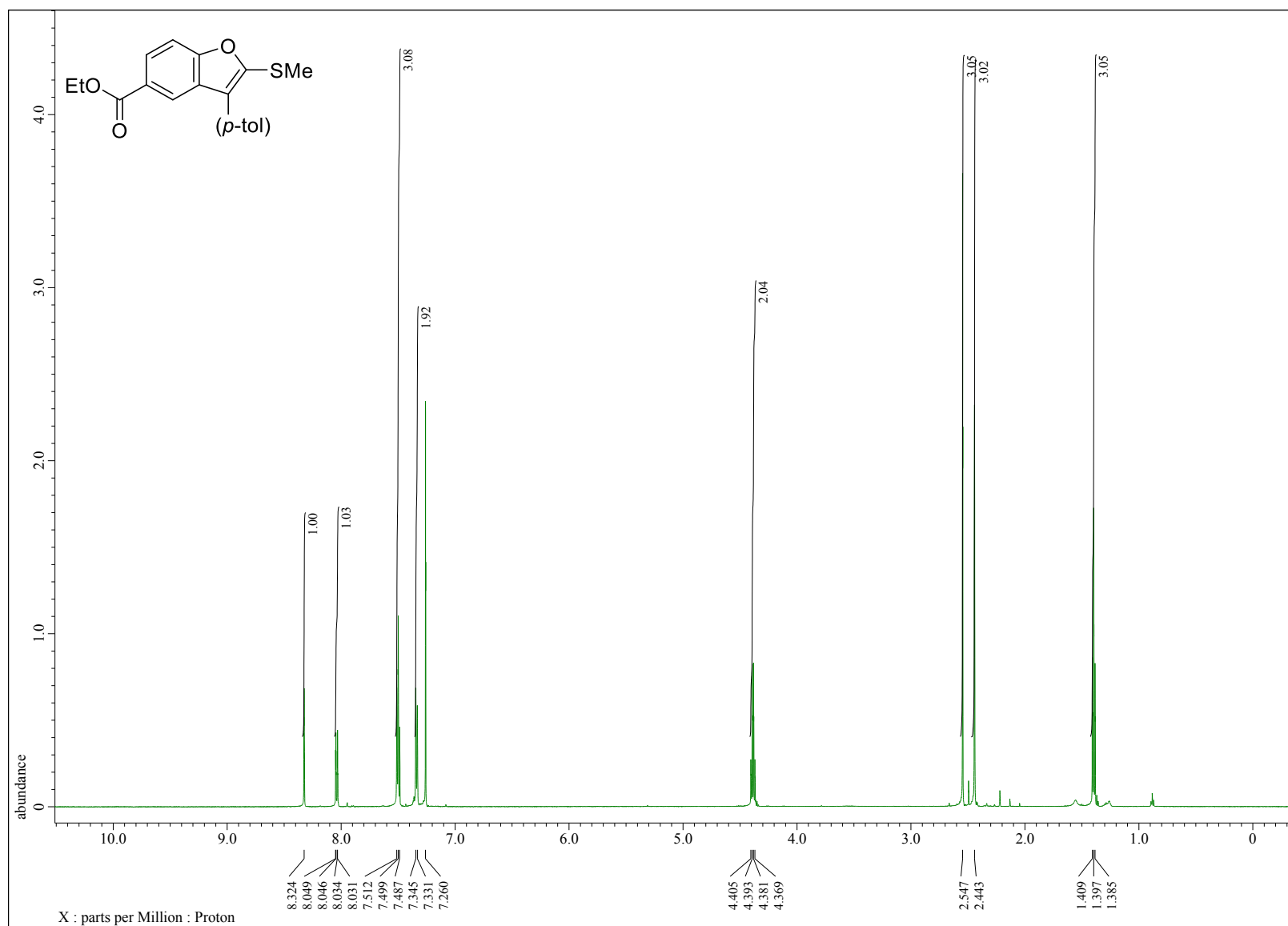


Figure S 7. ¹H NMR spectrum of **1g**

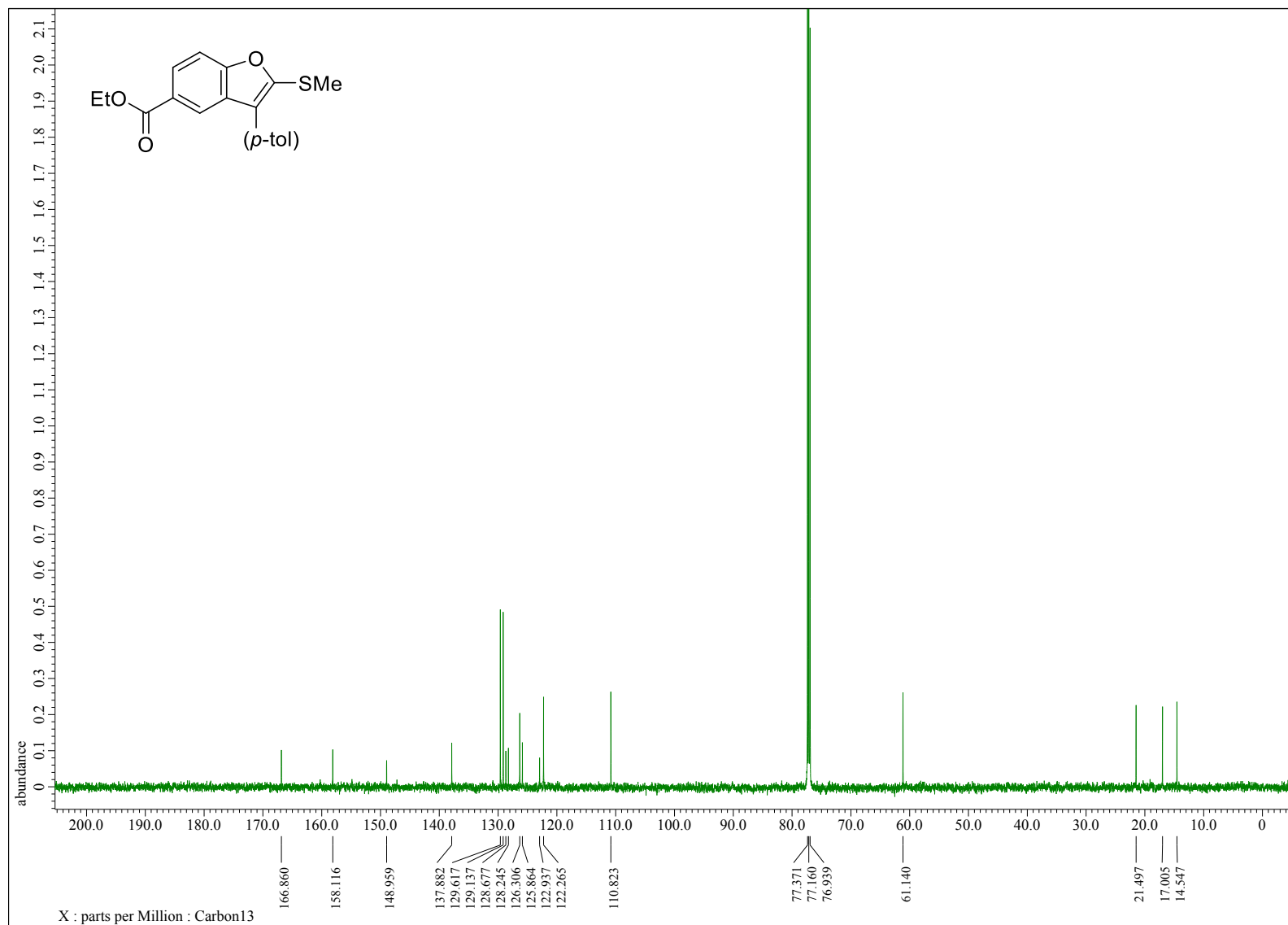


Figure S 8. ¹³C NMR spectrum of **1g**

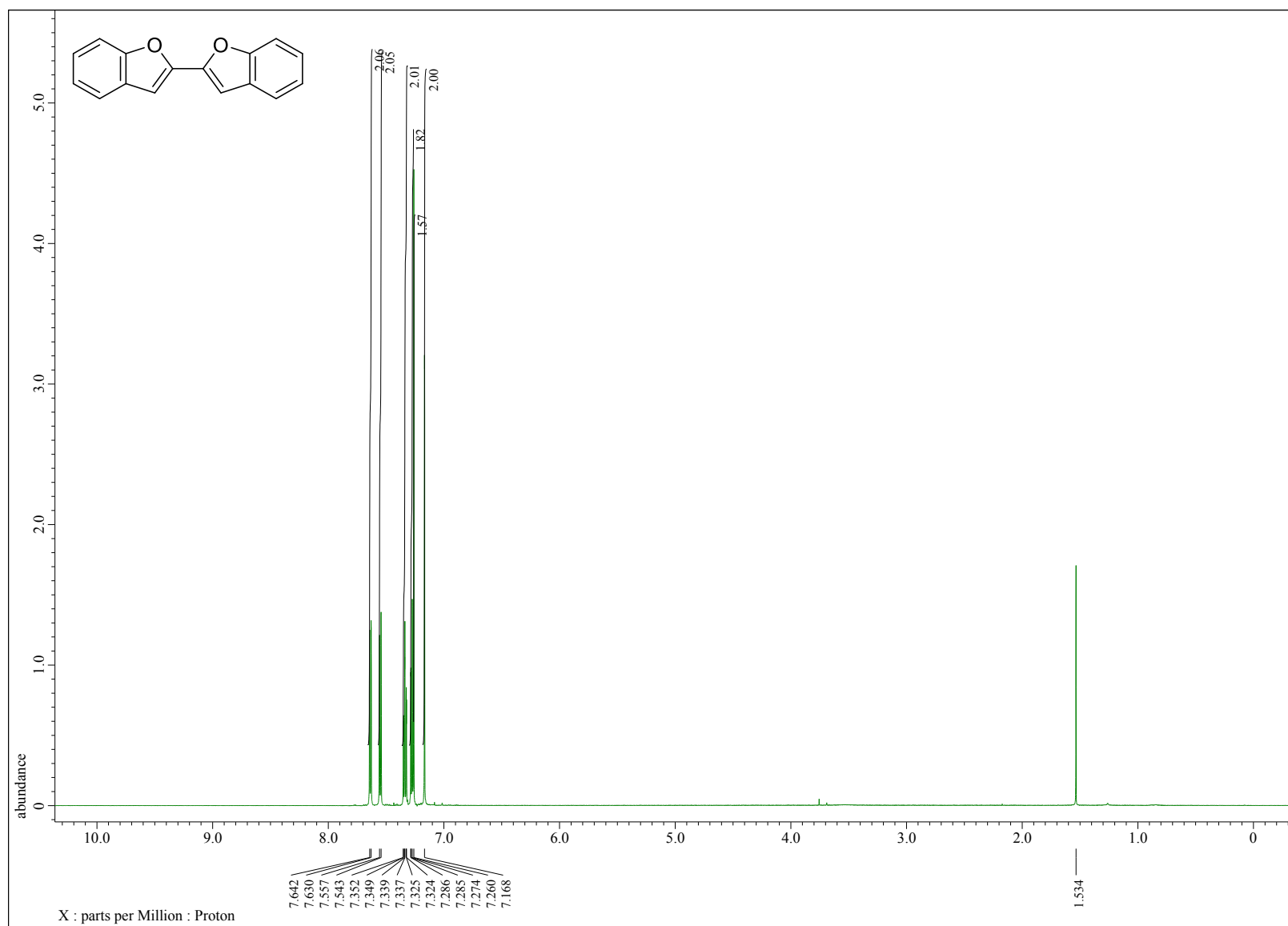


Figure S 9. ¹H NMR spectrum of 2a

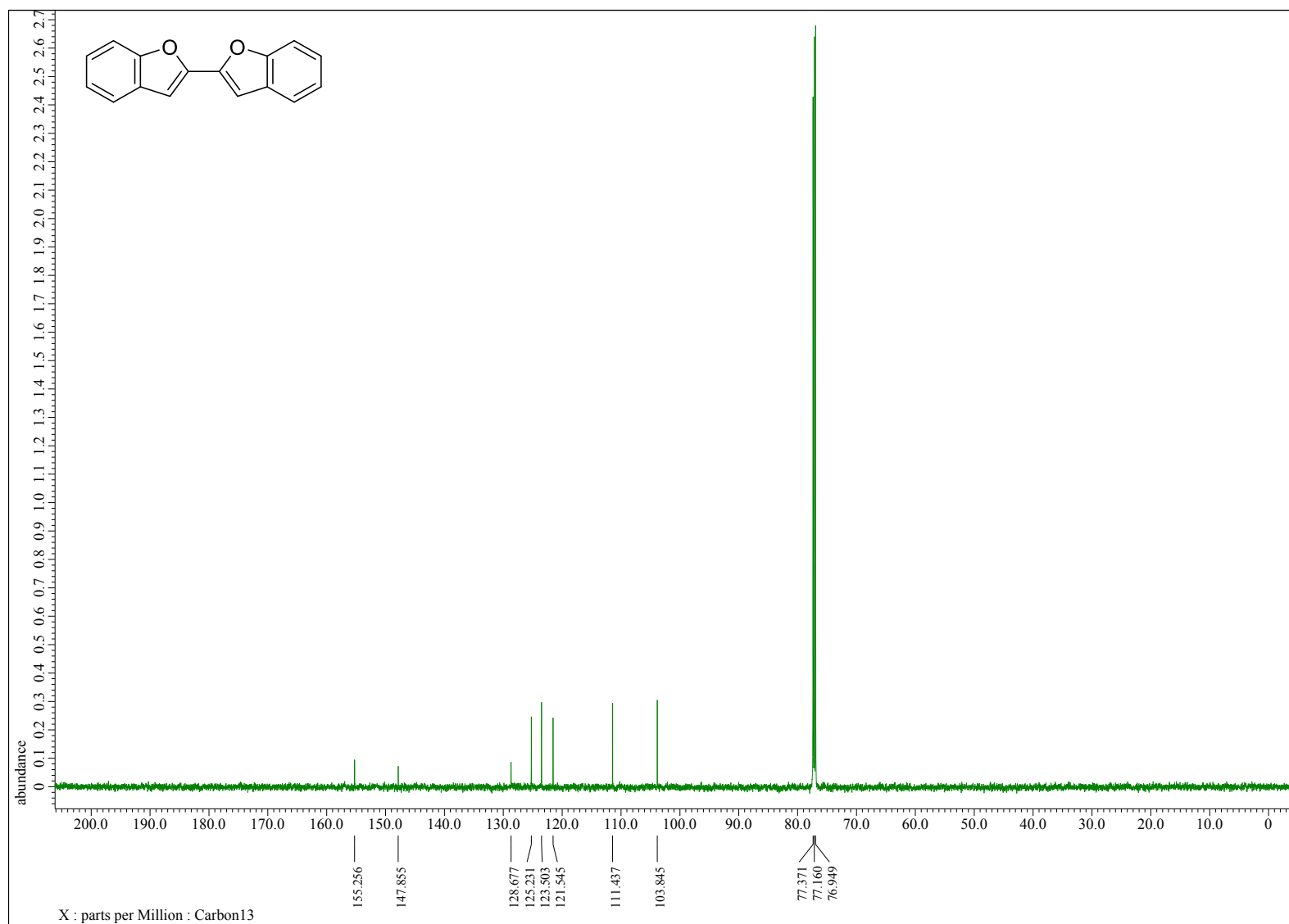


Figure S 10. ¹³C NMR spectrum of 2a

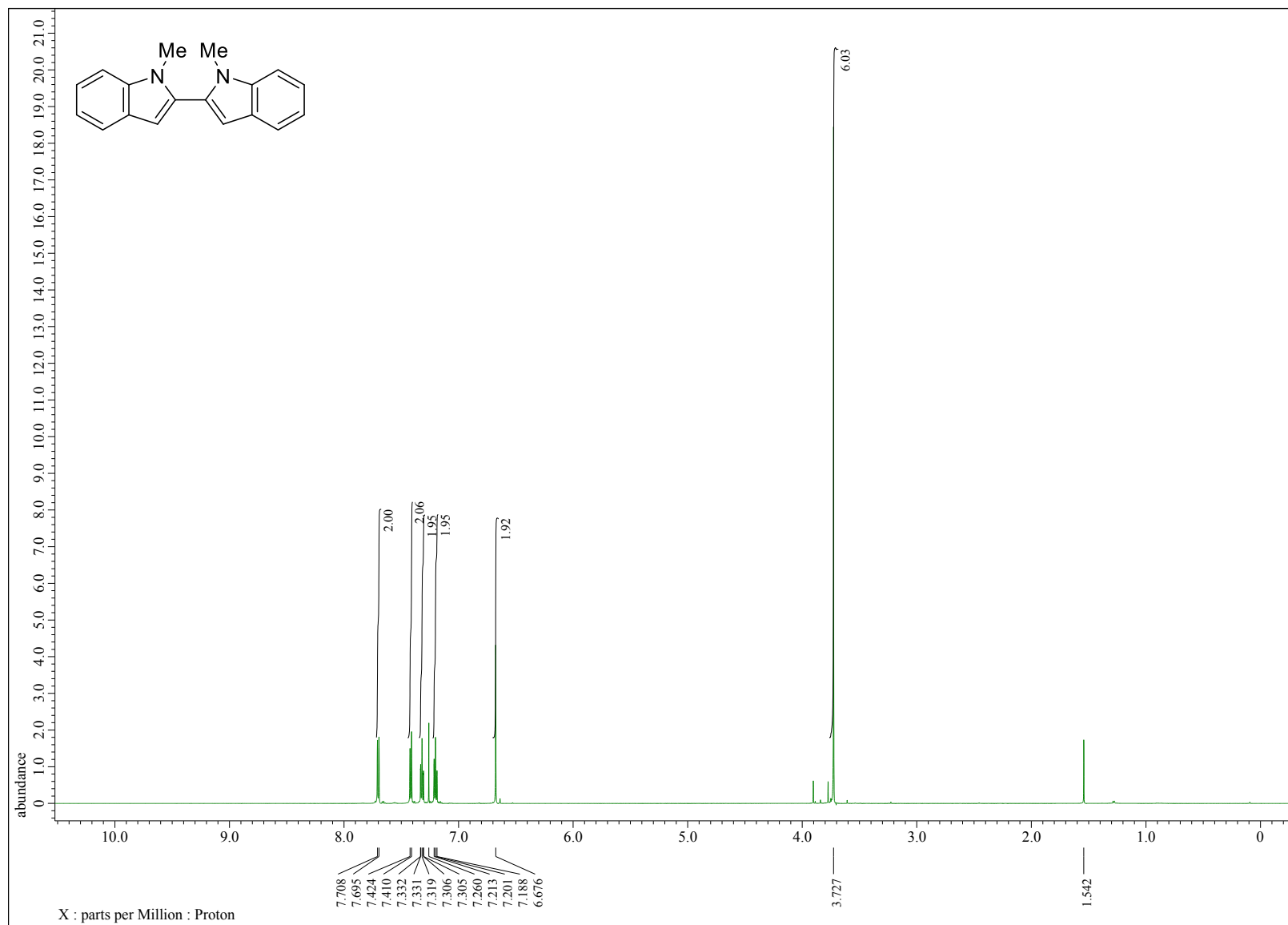


Figure S 11. ¹H NMR spectrum of **2b**

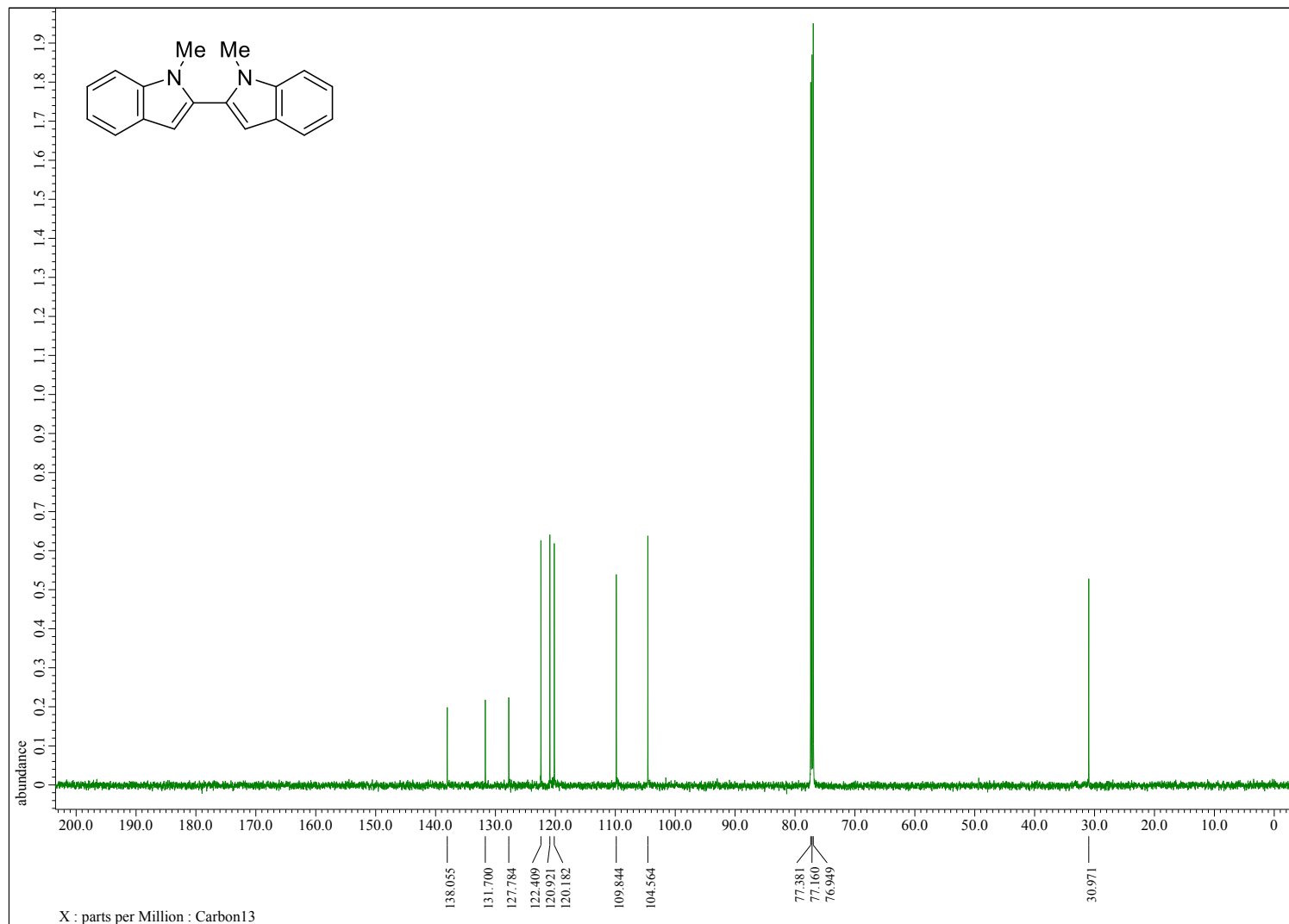


Figure S 12. ¹³C NMR spectrum of 2b

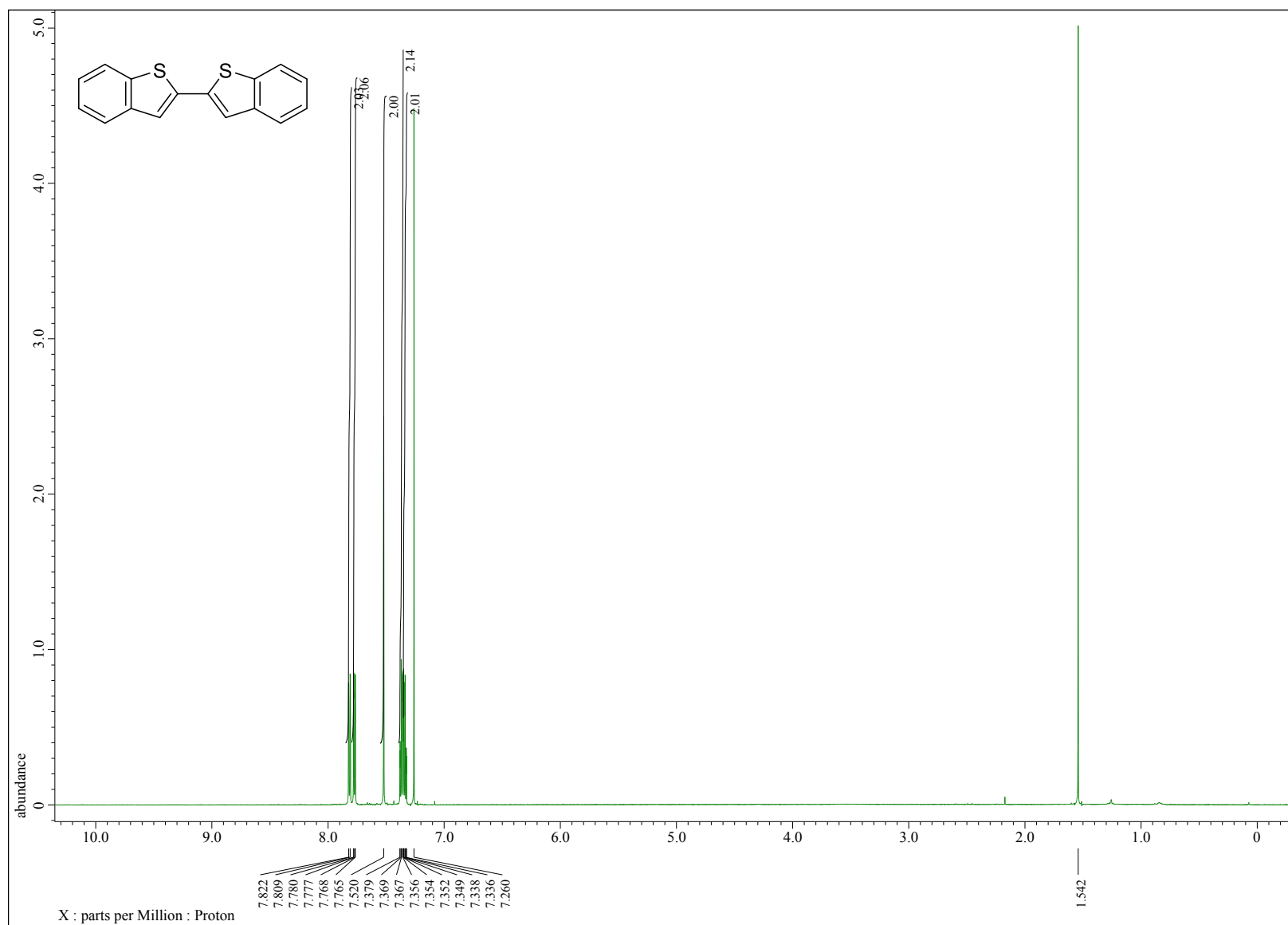


Figure S 13. ¹H NMR spectrum of 2c

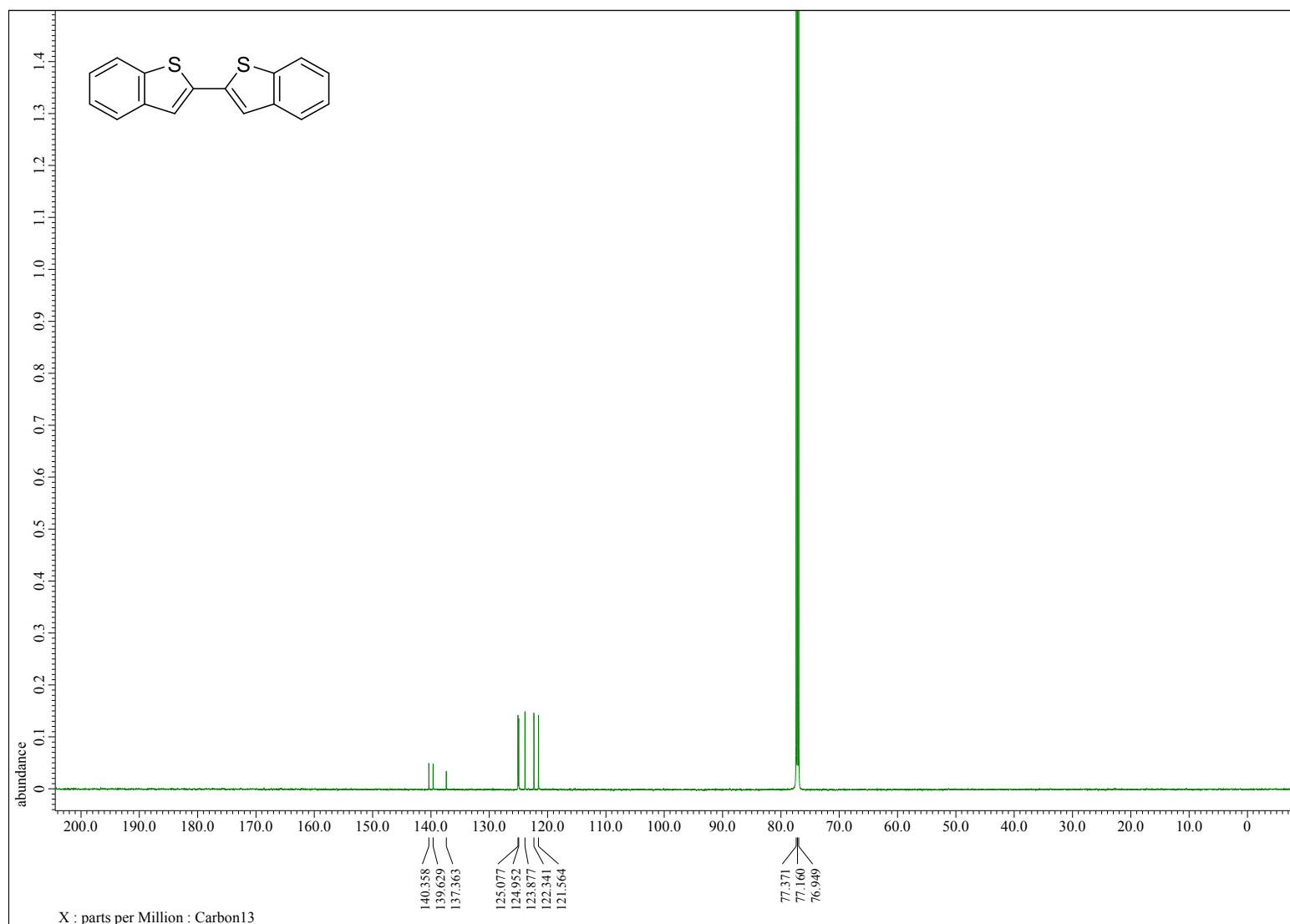


Figure S 14. ¹³C NMR spectrum of 2c

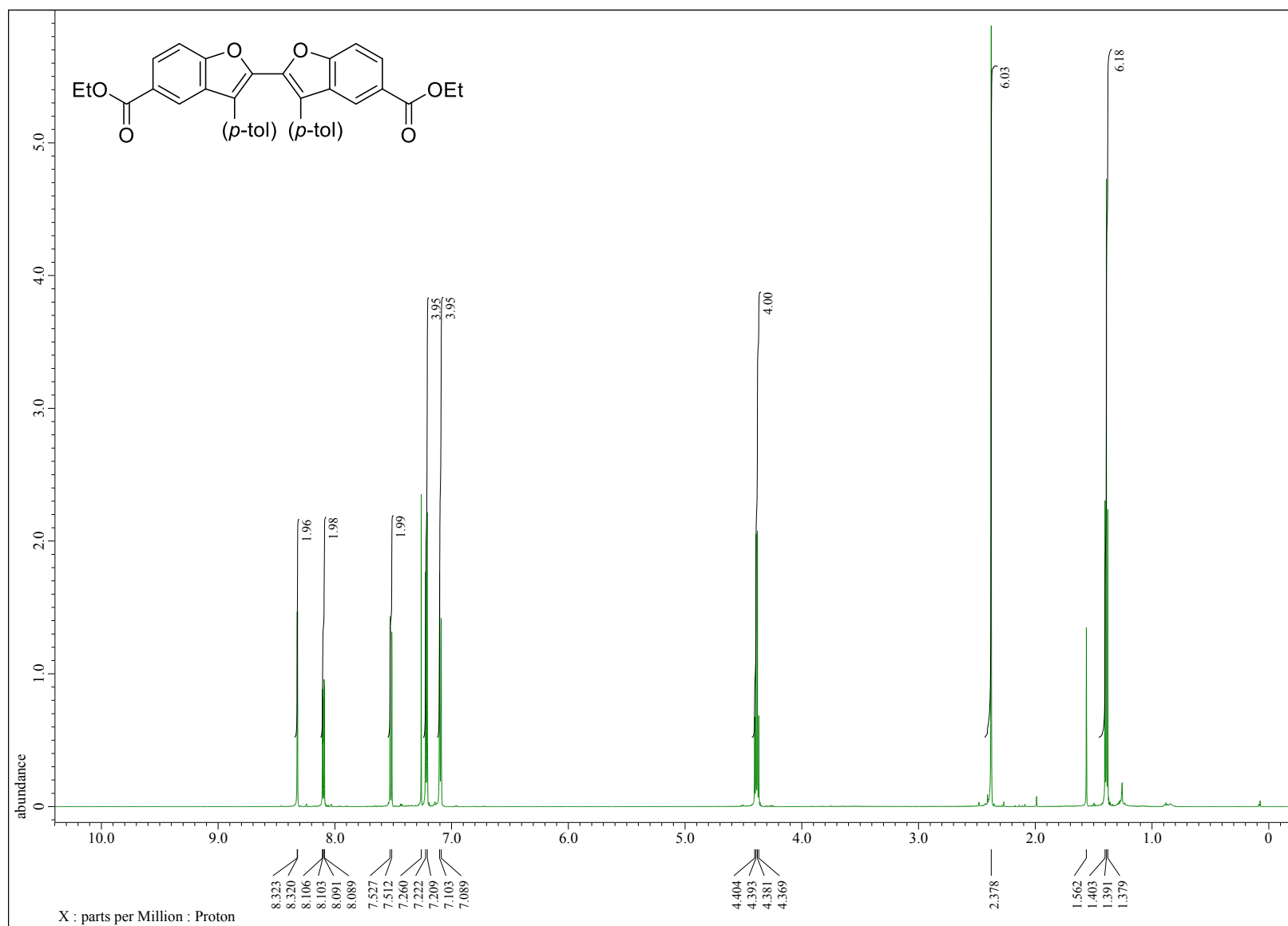


Figure S 15. ¹H NMR spectrum of **2g**

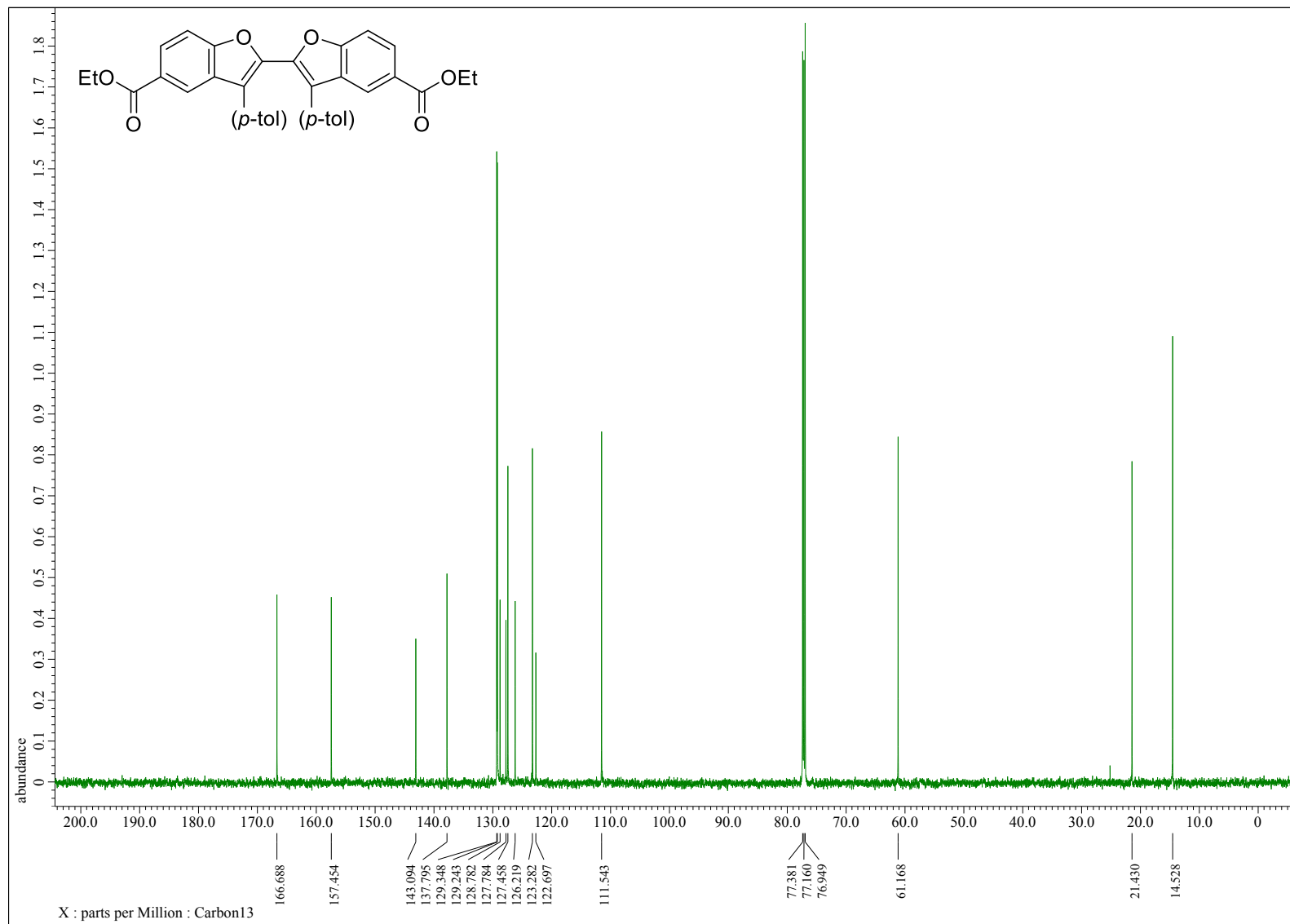


Figure S 16. ¹³C NMR spectrum of **2g**