

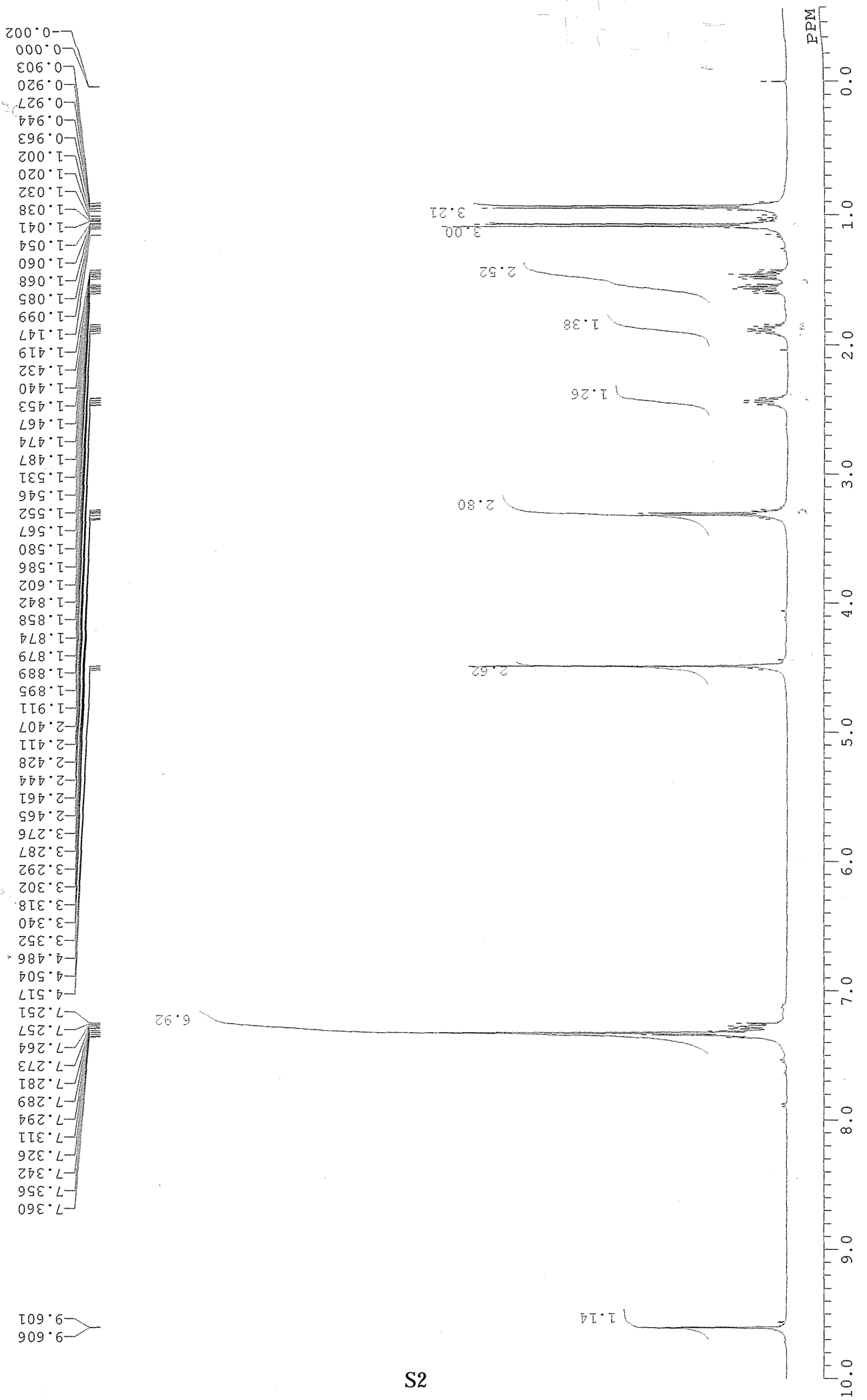
Supporting Information

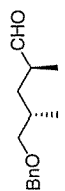
SYNTHETIC STUDY OF THERMOLIDES: STEREOSELECTIVE CONSTRUCTION OF THE C10-C21 FRAGMENT

Hikaru Yoshimura,¹ Jun Ishihara,¹ and Susumi Hatakeyama^{2*}

¹ Graduate School of Biomedical Sciences, Nagasaki University, 1-14 Bunkyo-machi, Nagasaki 852-8521, Japan. ² Medical Innovation Center, Nagasaki University, 1-14 Bunkyo-machi, Nagasaki 852-8521, Japan.

Table of Contents	Page
¹ H and ¹³ C NMR Spectra of Scheme 3	S2-S21
¹ H and ¹³ C NMR Spectra of Scheme 4	S22-S39





205.175
205.158

138.490

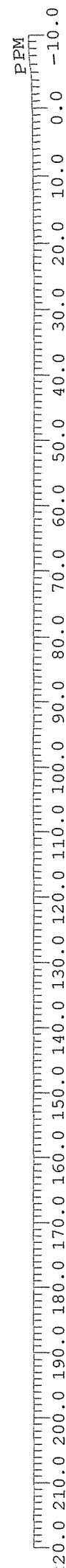
128.298
127.483
127.466

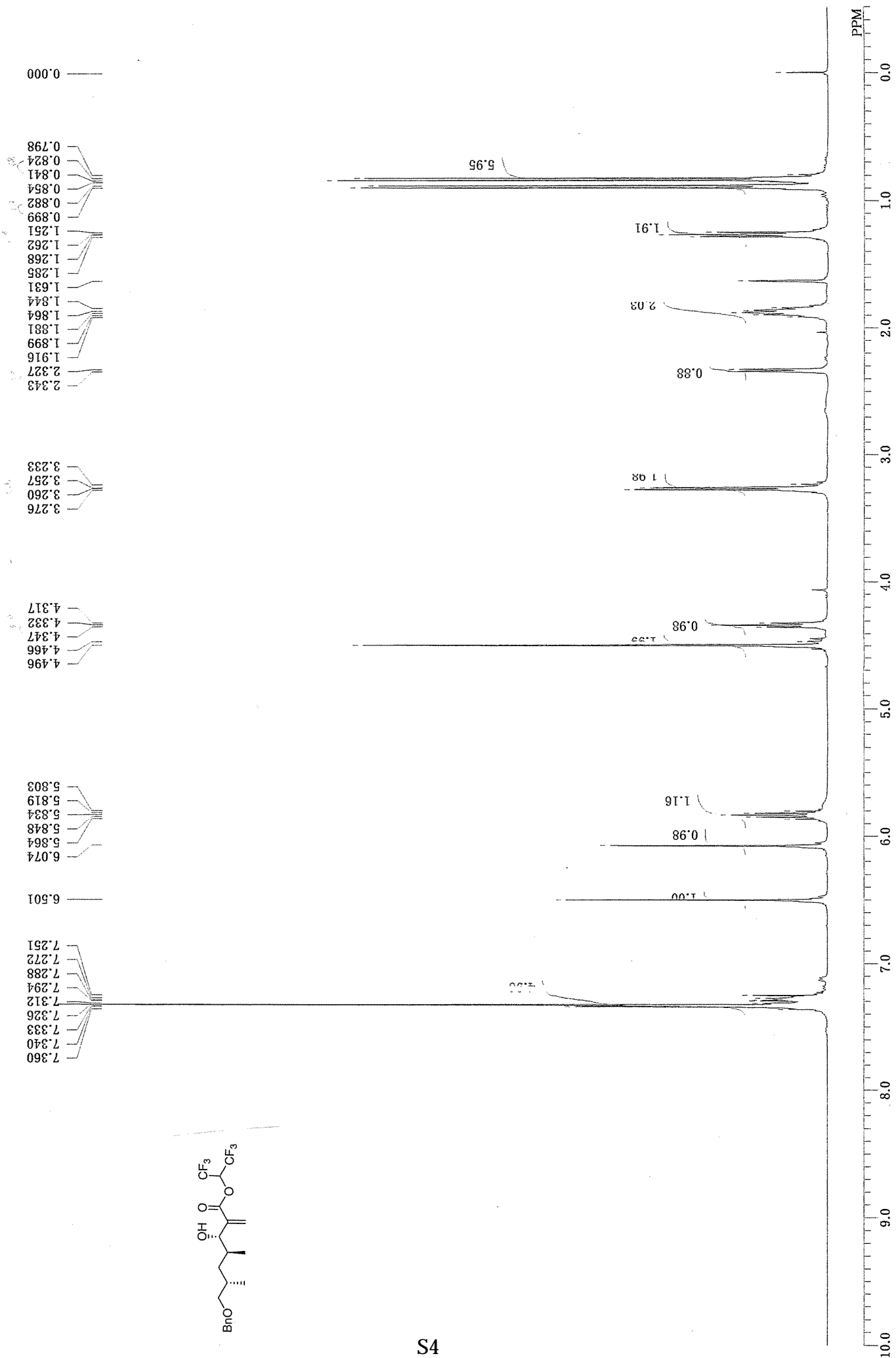
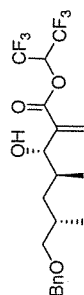
77.313
77.000
76.679
75.600
72.982

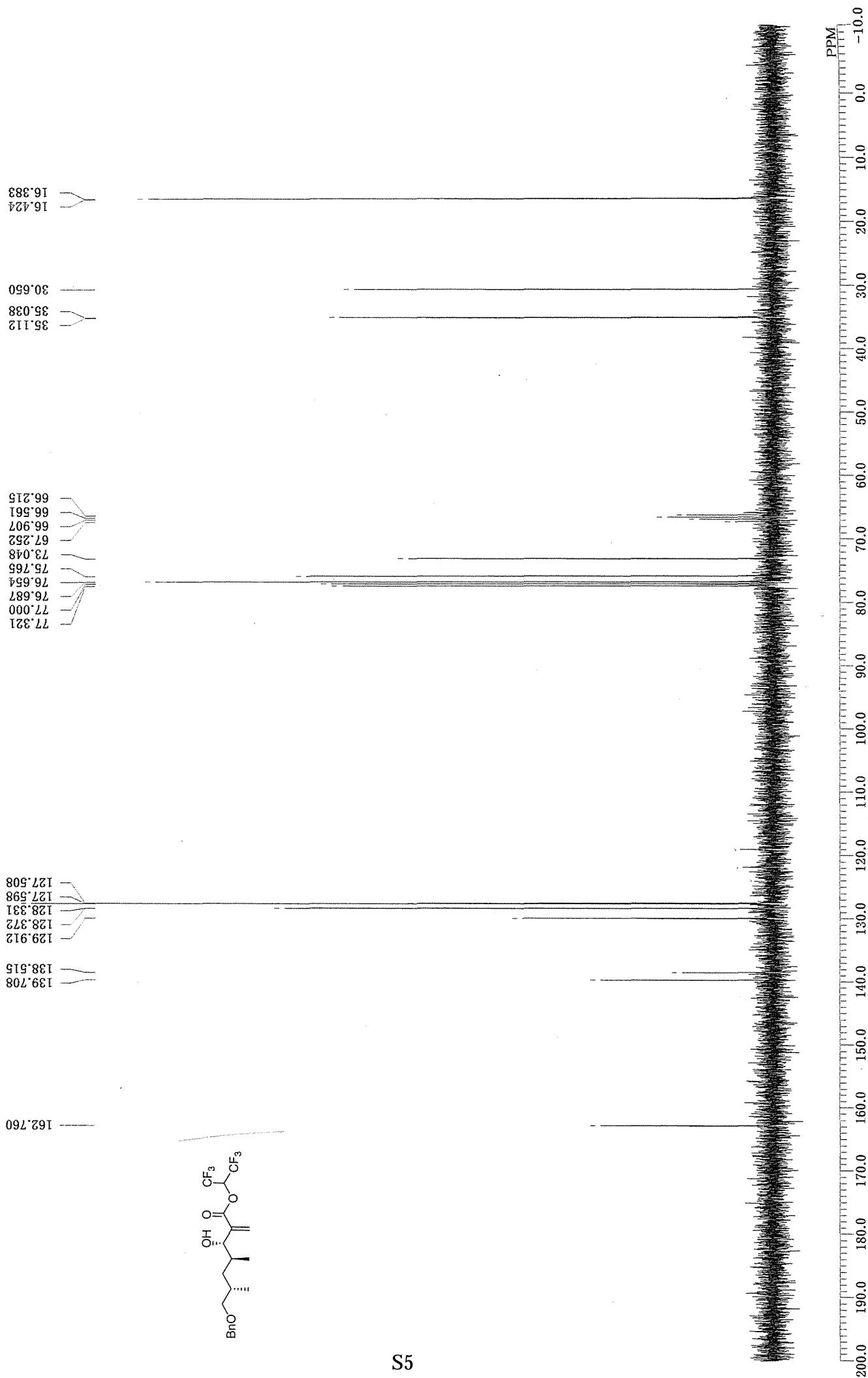
43.970

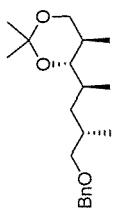
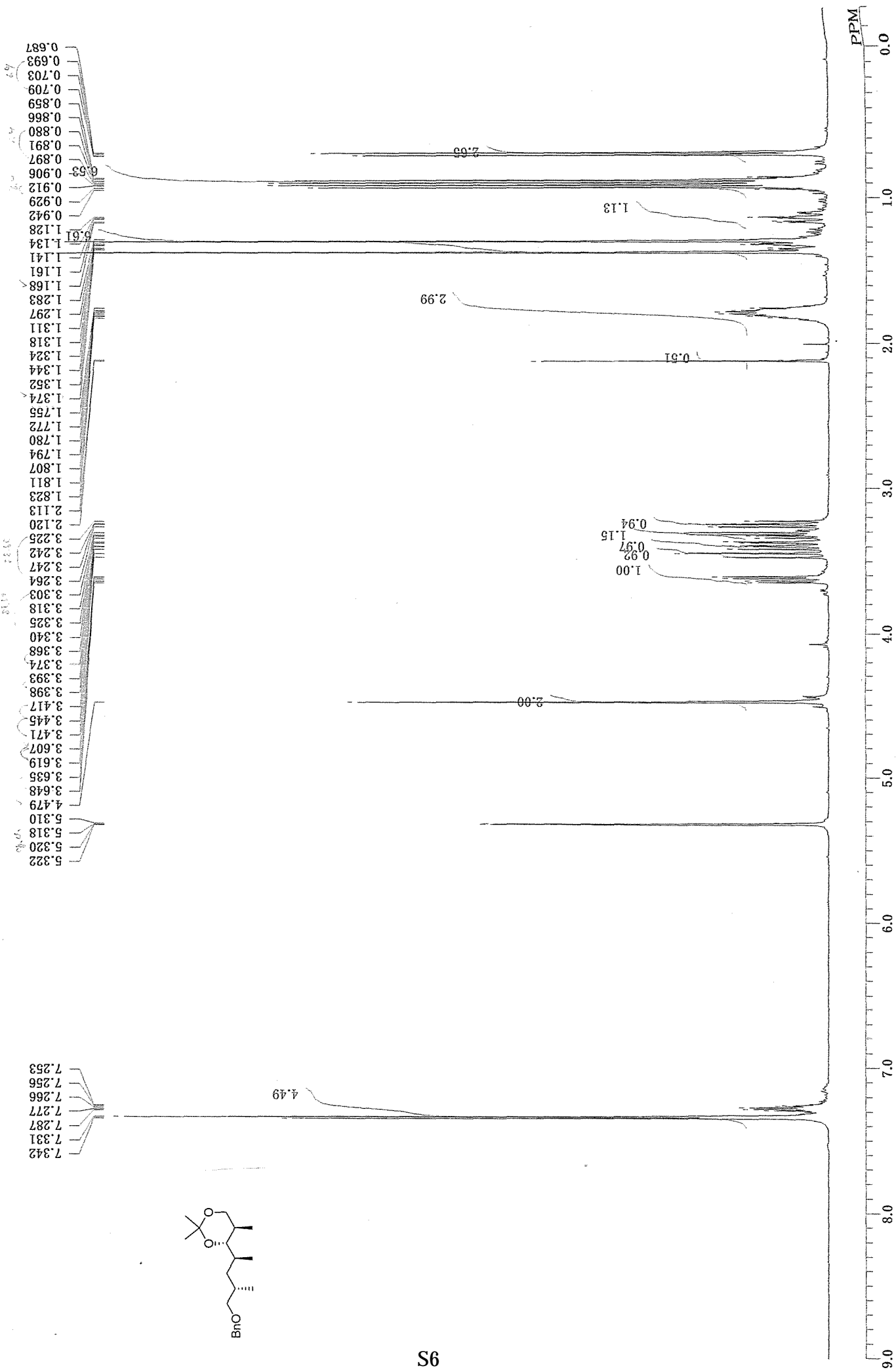
34.297
30.963

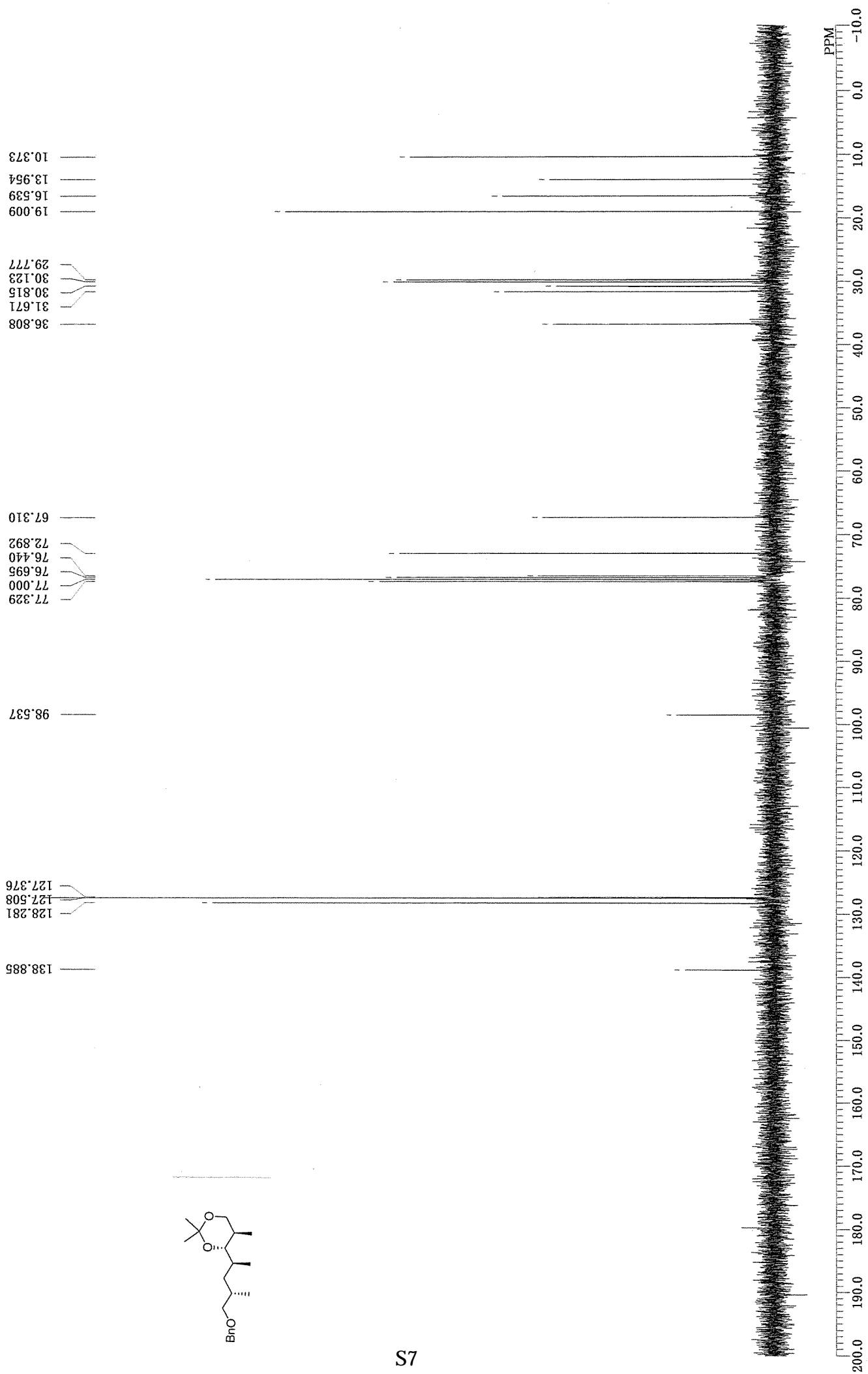
16.803
13.394

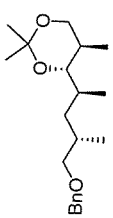




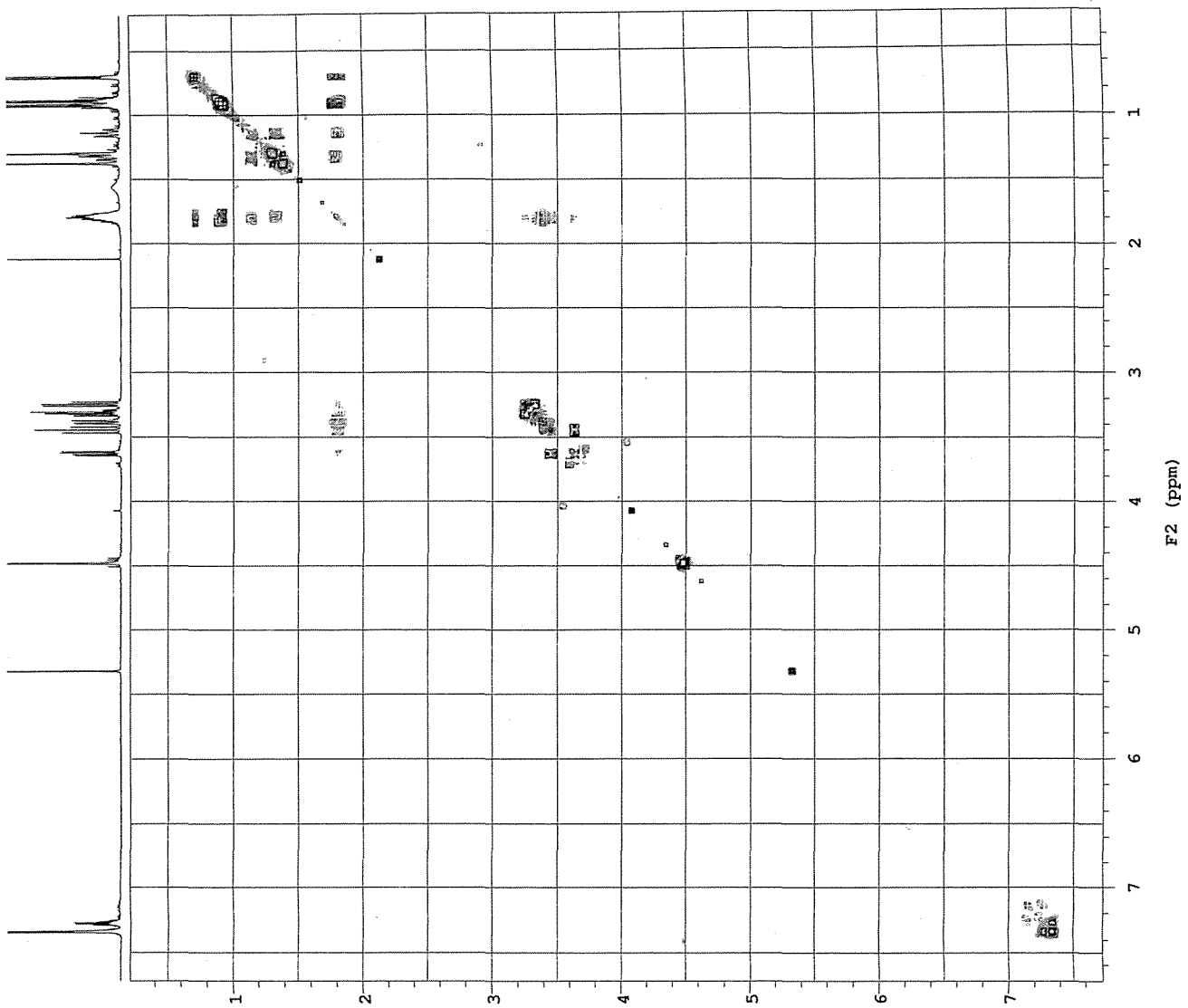




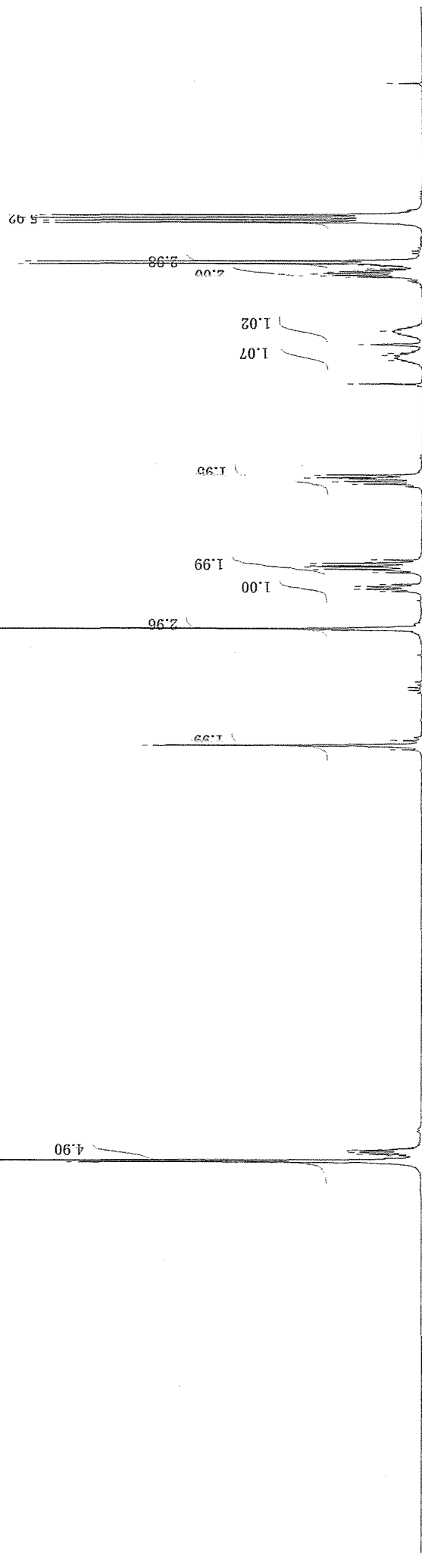




2054

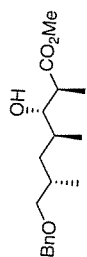


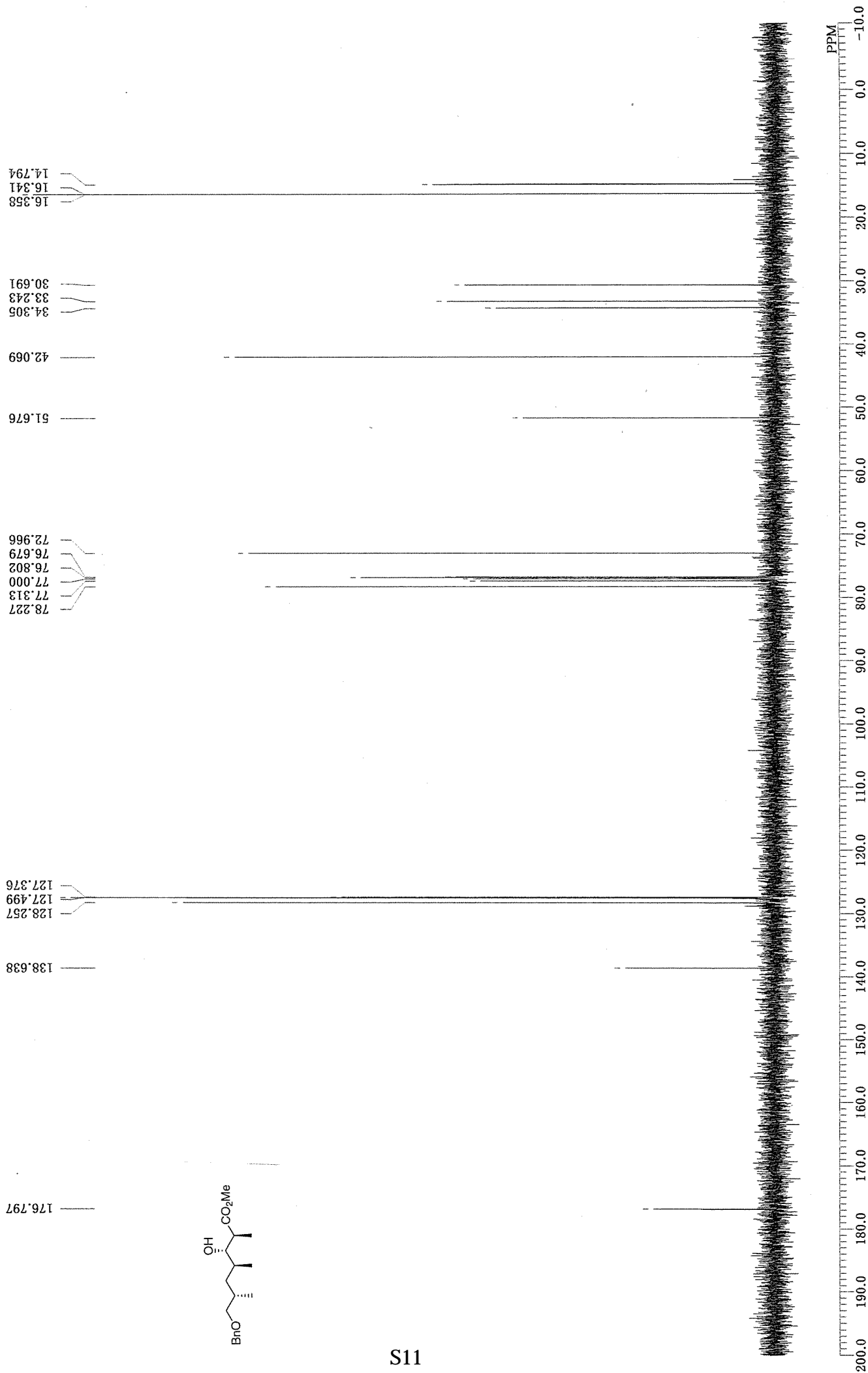
PPM 0.0 1.0 2.0 3.0 4.0 5.0 6.0 7.0 8.0 9.0 10.0

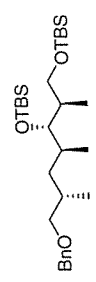
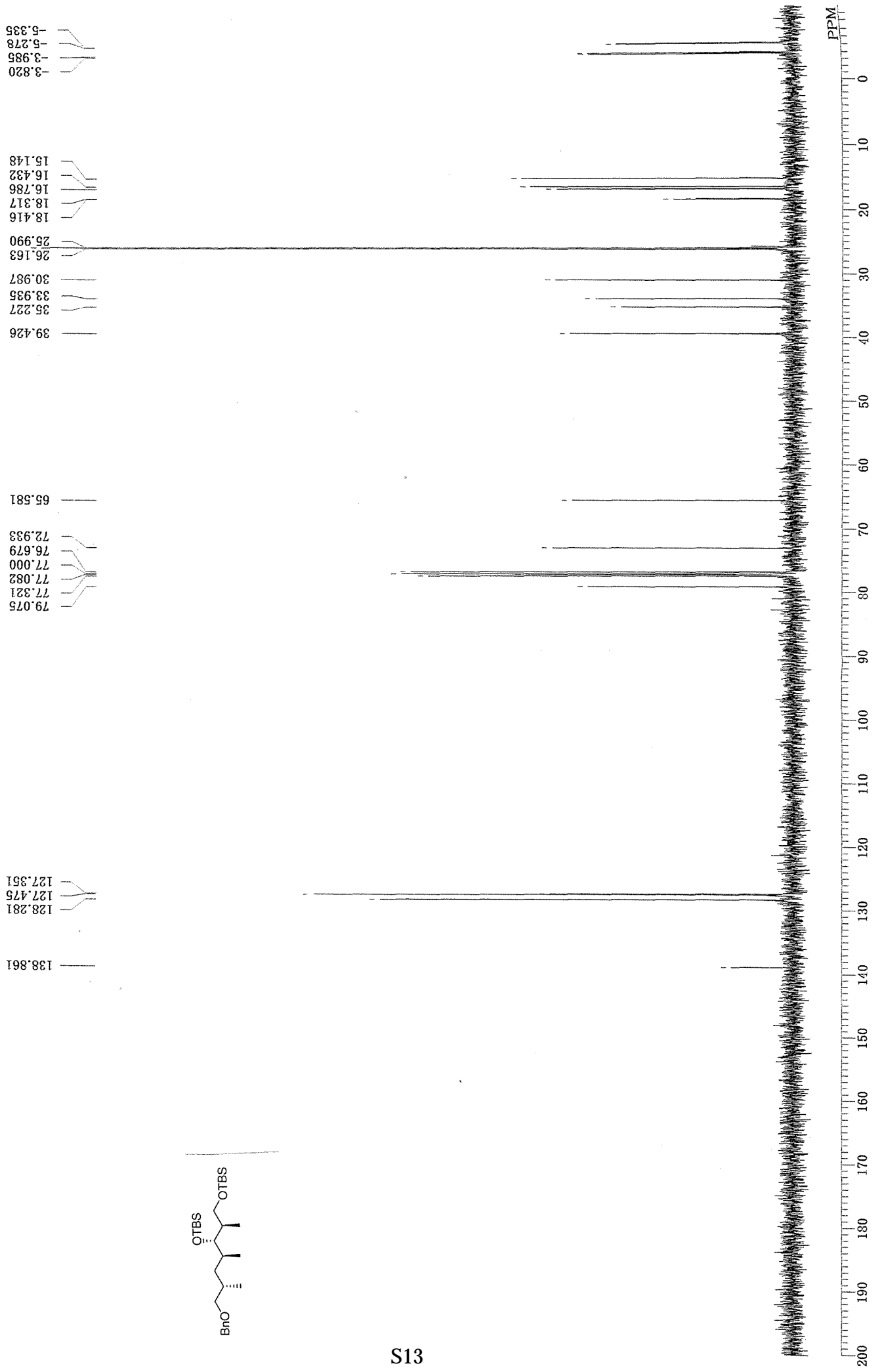


0.000
0.886
0.902
0.920
0.937
1.197
1.215
1.227
1.235
1.253
1.263
1.274
1.286
1.298
1.309
1.675
1.768
1.827
1.842
1.878
2.036
2.657
2.666
2.676
2.684
2.701
2.718
3.235
3.252
3.257
3.274
3.282
3.298
3.304
3.320
3.403
3.418
3.435
3.451
3.697
3.710
4.465
4.495
4.500
4.529

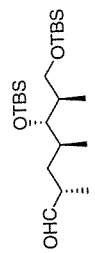
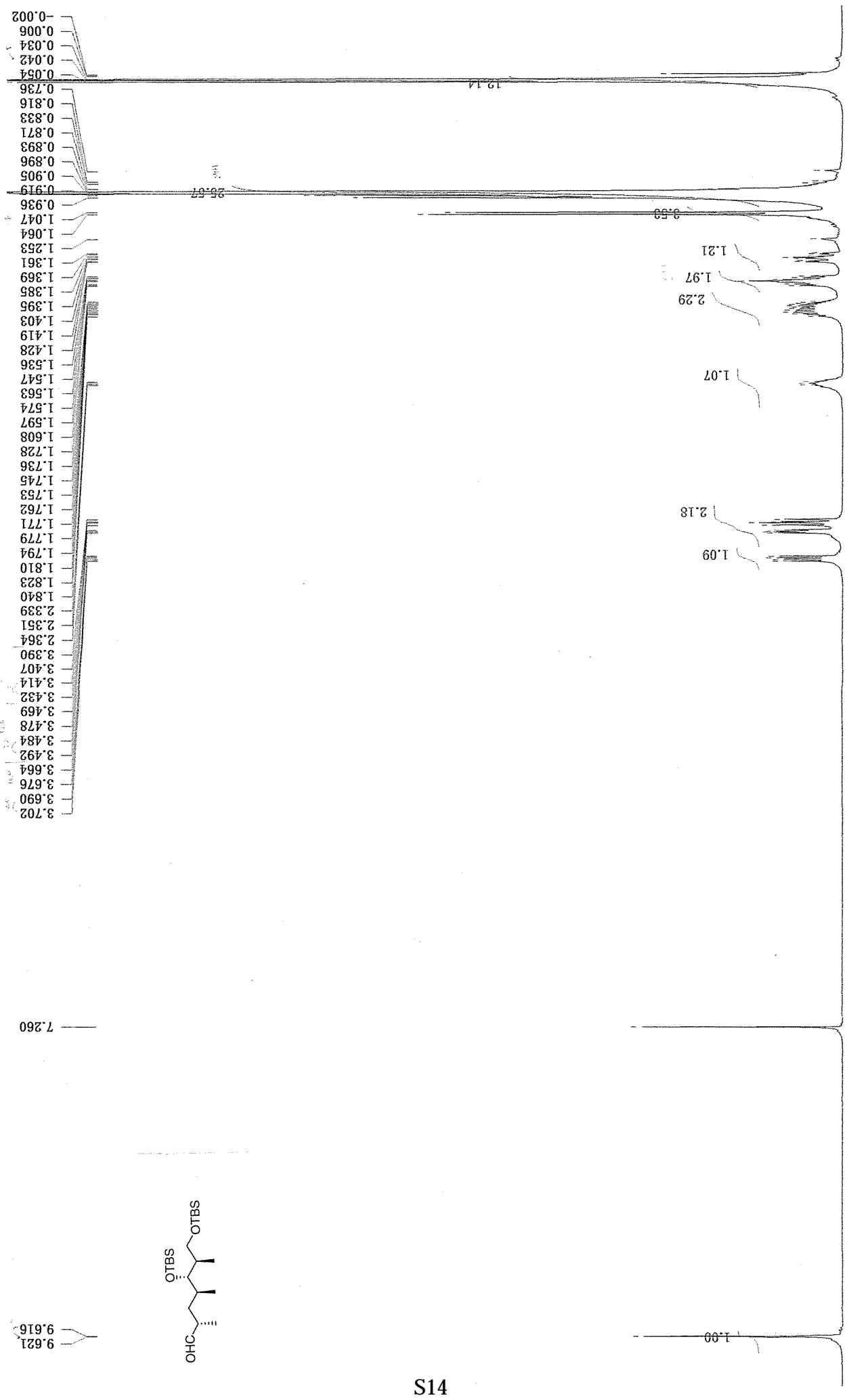
7.253
7.259
7.265
7.276
7.287
7.296
7.326
7.338







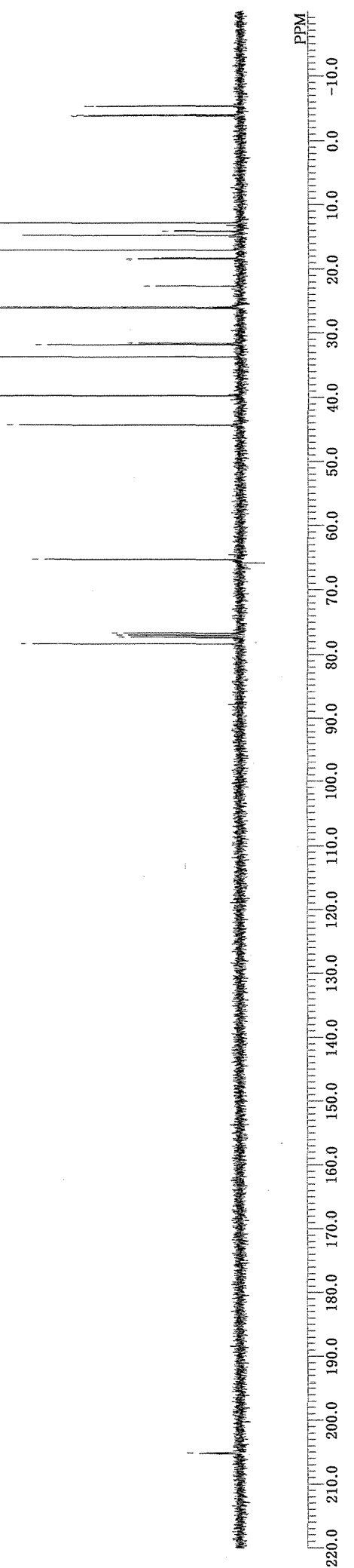
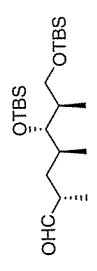
PPM



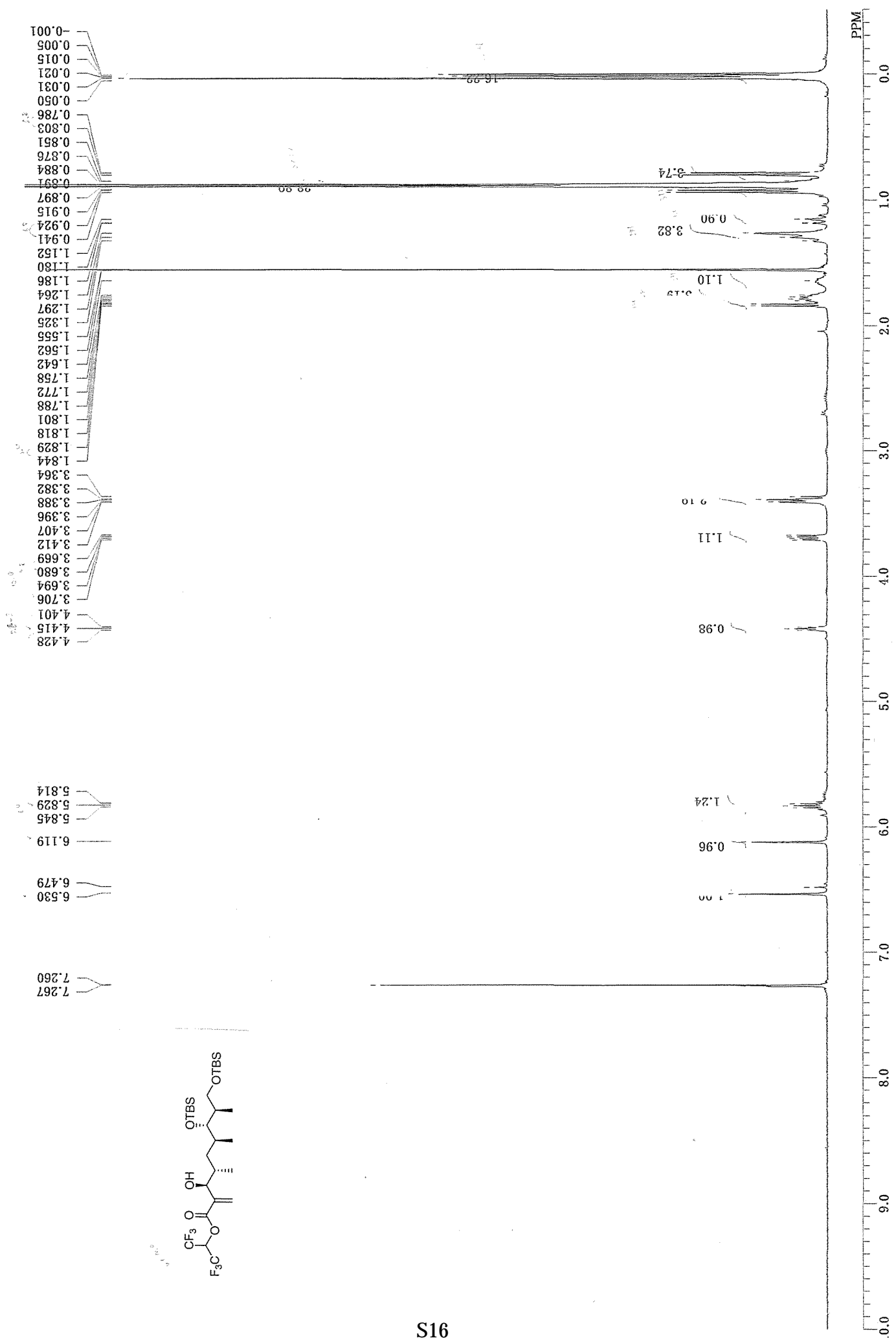
44.333
 39.731
 33.688
 31.794
 31.572
 26.114
 25.924
 22.623
 18.383
 18.367
 18.260
 18.243
 17.025
 14.753
 14.736
 14.086
 12.818
 -3.862
 -3.878
 -4.026
 -4.043
 -5.327
 -5.343
 -5.434

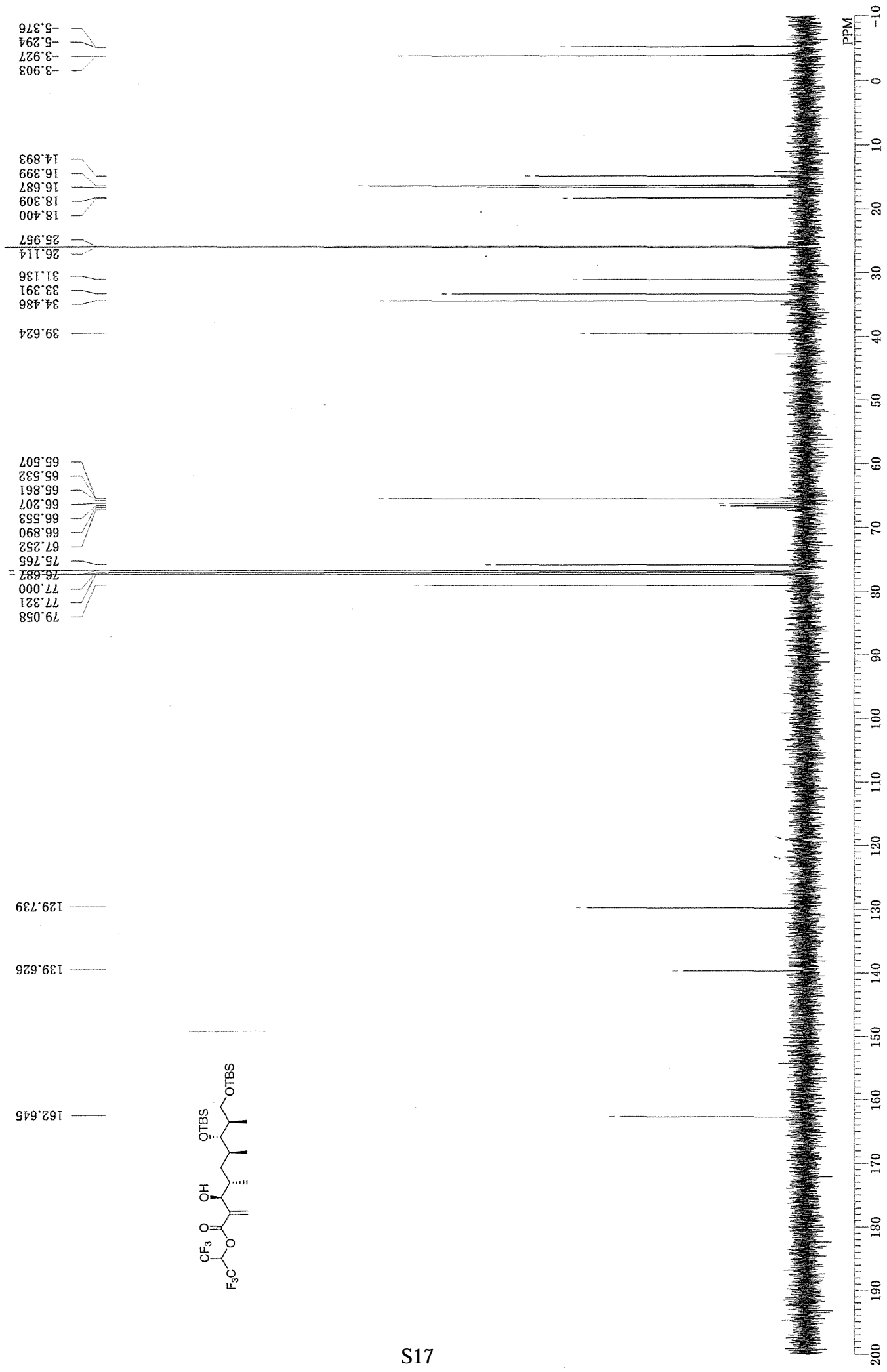
78.350
 77.313
 77.000
 76.679

205.109



220.0 210.0 200.0 190.0 180.0 170.0 160.0 150.0 140.0 130.0 120.0 110.0 100.0 90.0 80.0 70.0 60.0 50.0 40.0 30.0 20.0 10.0 0.0 -10.0
 PPM





PPM 0 1 2 3 4 5 6 7 8

0.063
0.000
-0.037
-0.052

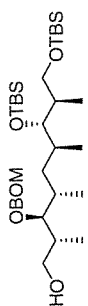
0.808
0.831
0.859
0.883
31.80
0.900
0.910
0.931
0.949
1.219
1.234
1.251
1.612
1.716
1.790
2.003

2.777

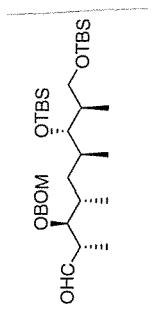
3.337
3.360
3.380
3.518
3.659
3.670
3.684
3.695
3.811

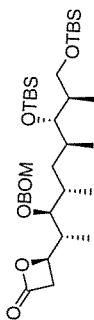
4.547
4.577
4.679
4.710
4.743
4.759
4.793
4.809

7.221
7.253
7.303
7.312

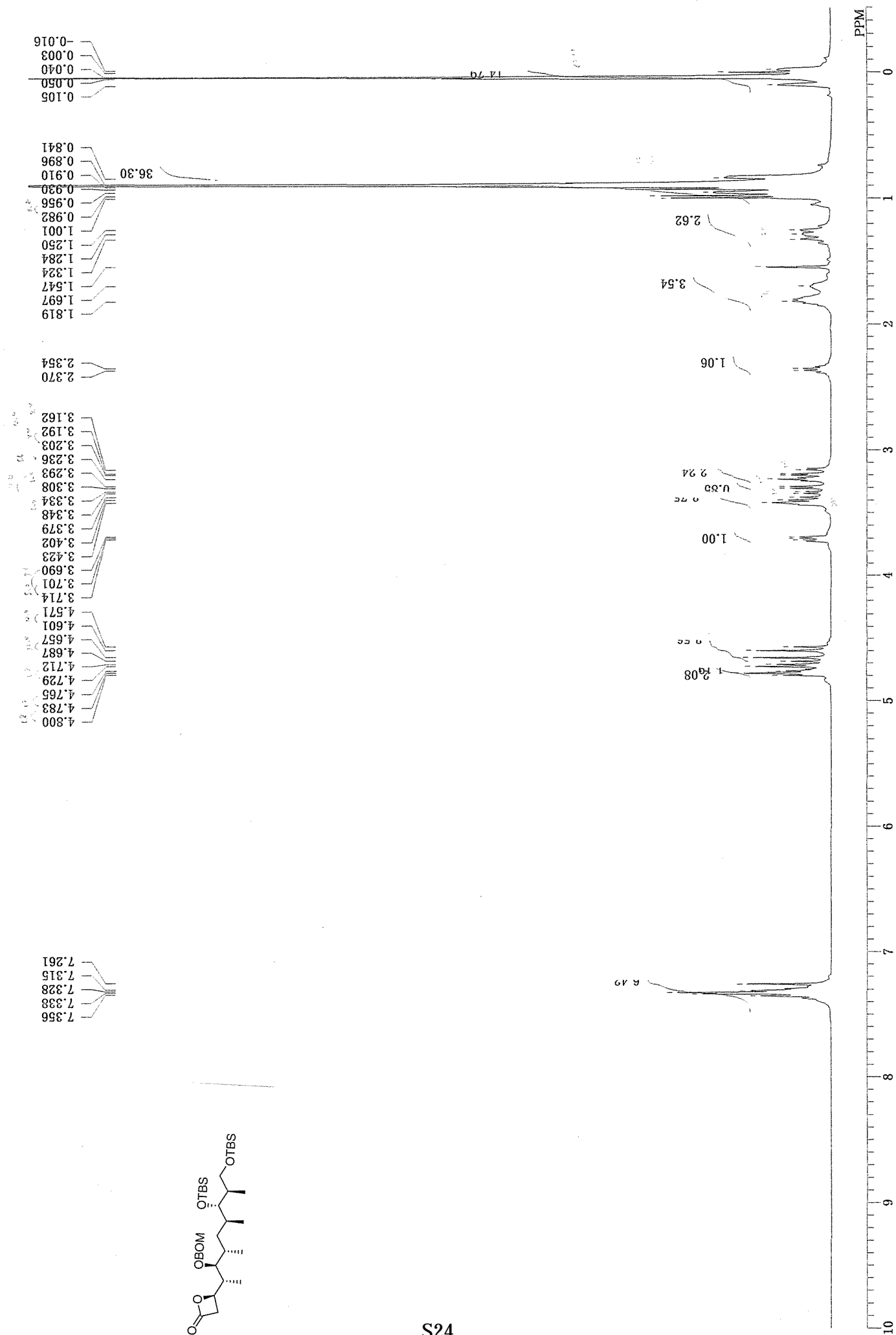


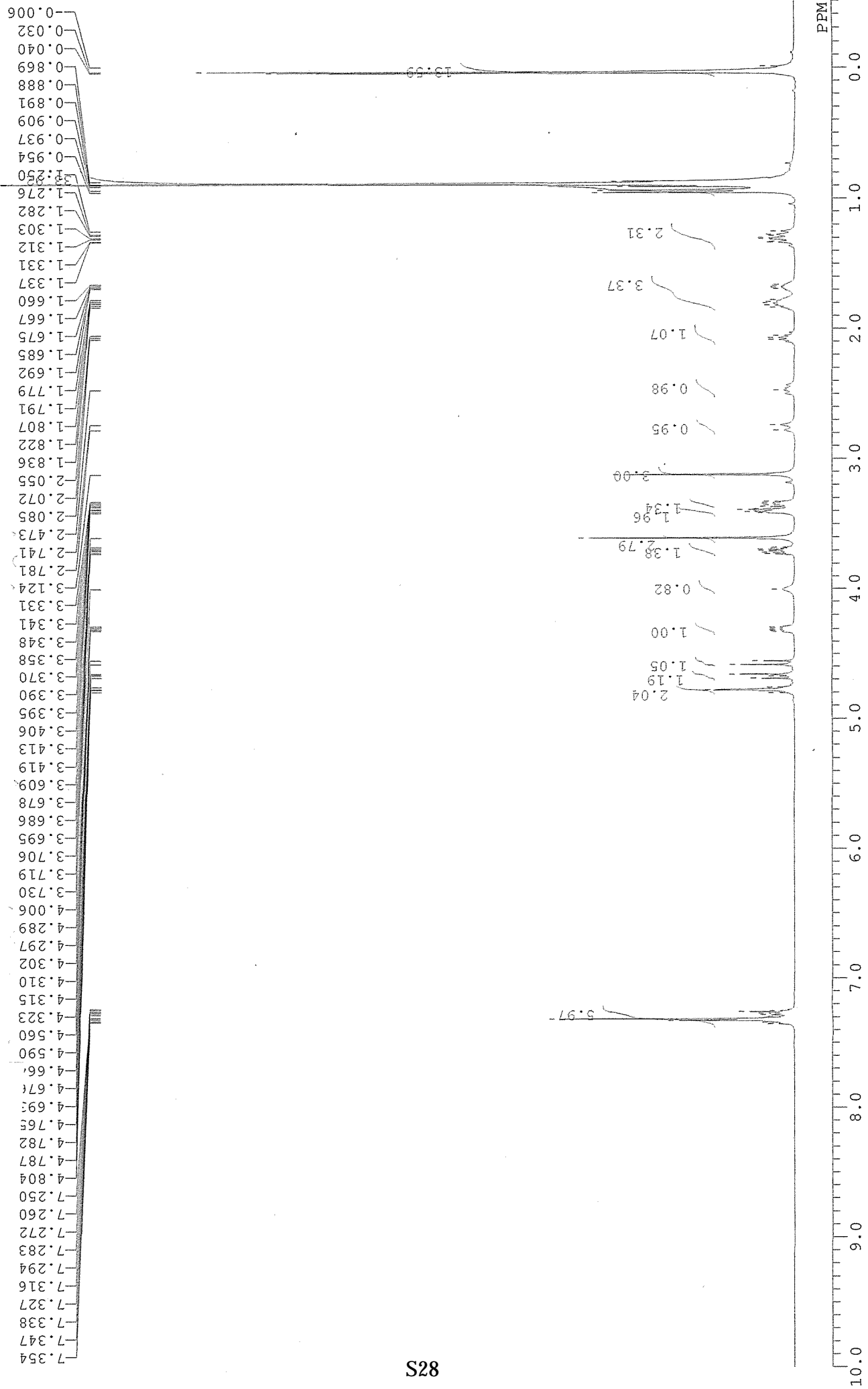
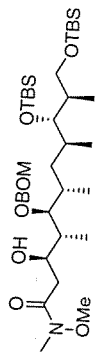
204.327
 137.642
 128.438
 127.837
 127.730
 95.705
 85.430
 79.009
 77.321
 77.000
 76.687
 70.101
 65.491
 48.778
 39.591
 33.638
 33.095
 32.807
 26.163
 25.974
 18.416
 18.317
 16.778
 15.716
 14.983
 11.682
 -3.787
 -3.911
 -5.278
 -5.352

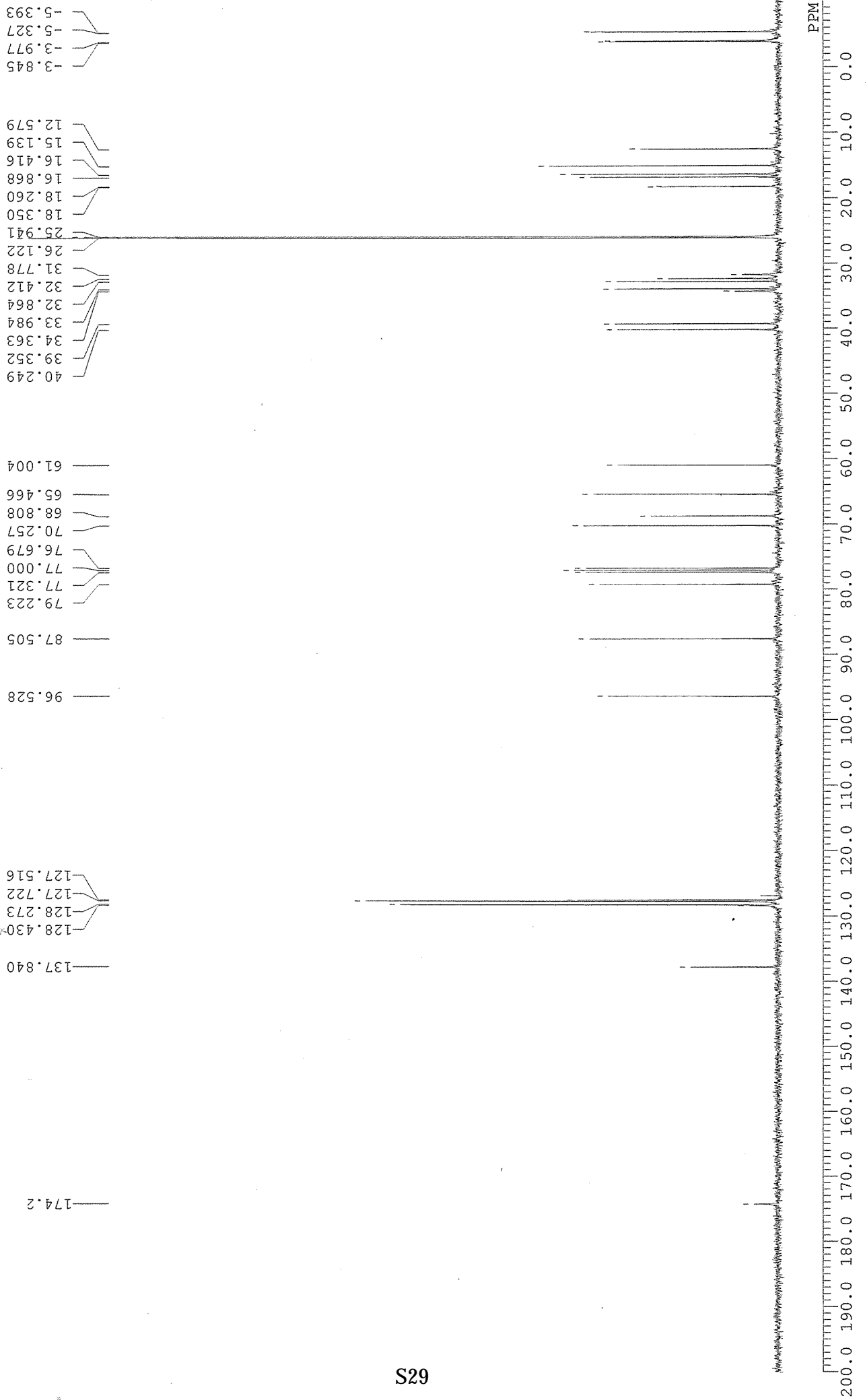
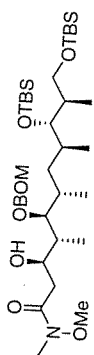


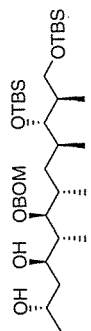


S24

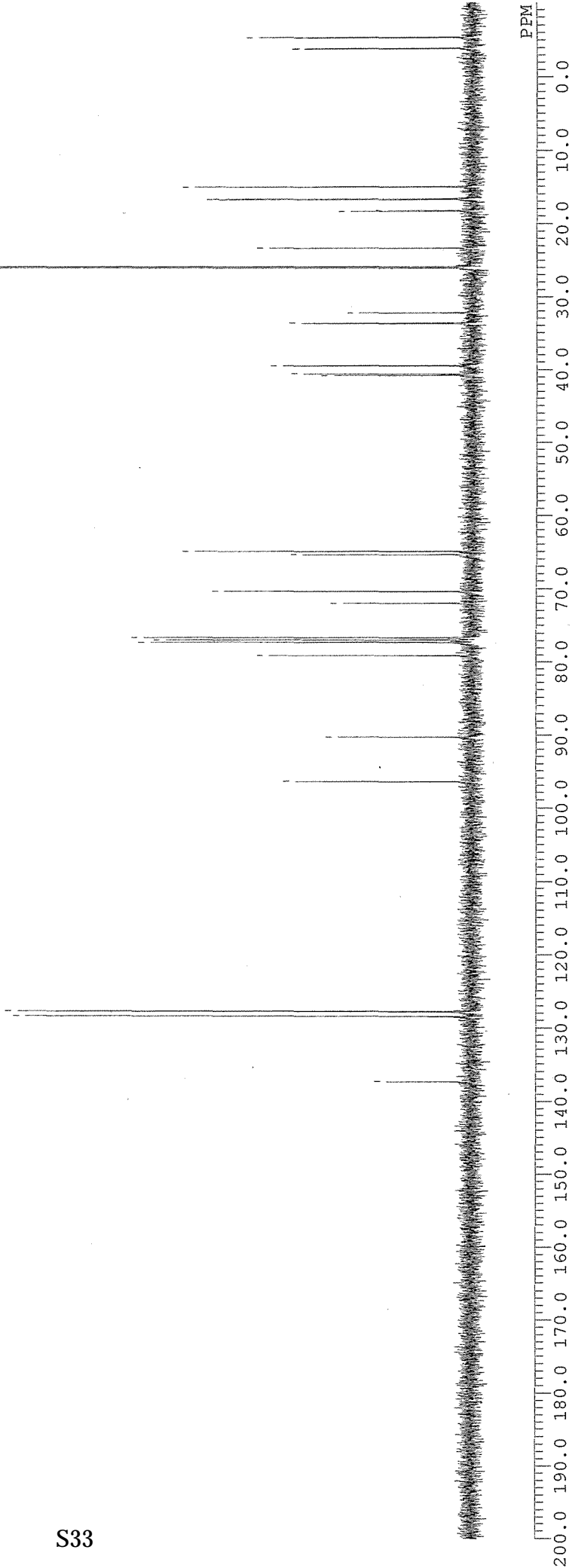


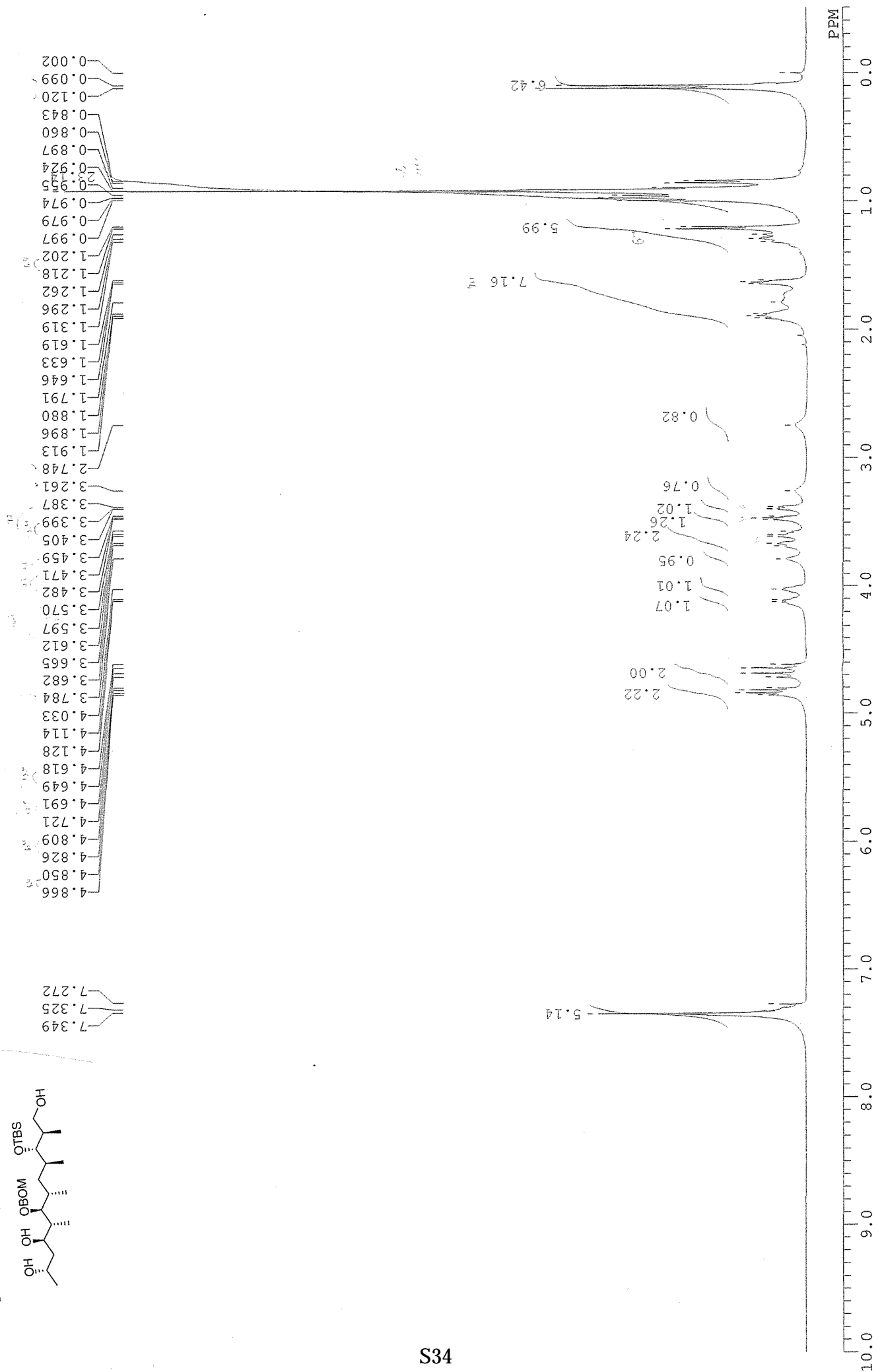
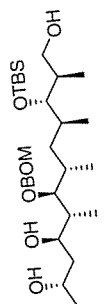


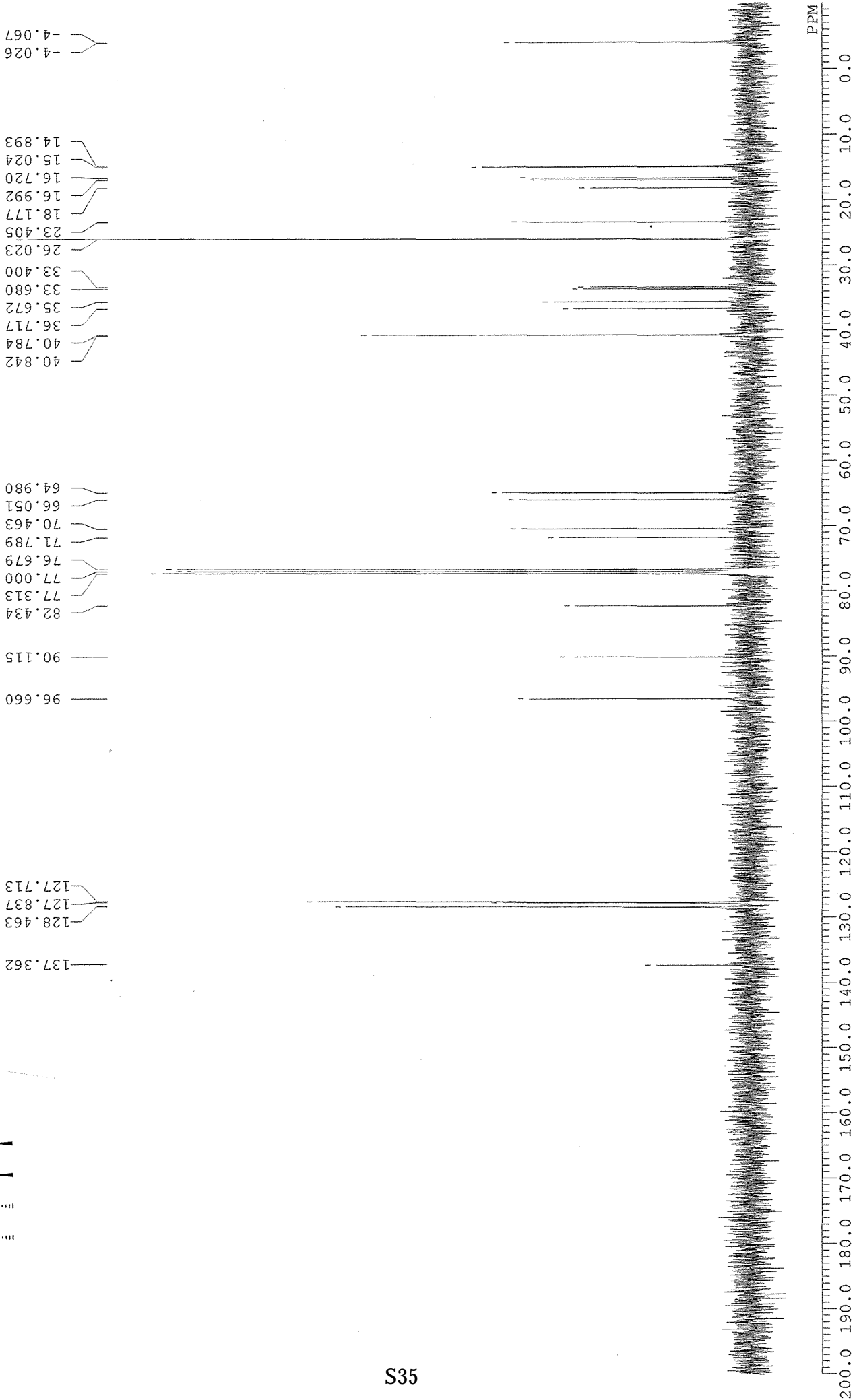
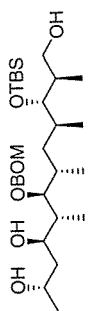


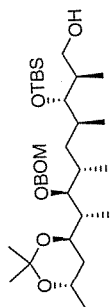


137.436
128.471
127.820
127.779
96.544
90.337
79.182
77.321
77.000
76.687
72.027
70.455
65.441
64.988
40.850
40.644
39.508
33.787
33.712
32.296
26.147
25.965
23.405
18.408
18.301
16.794
16.695
15.082
-3.820
-3.862
-5.294
-5.360









- 137.963
- 128.380
- 127.738
- 127.606
- 100.101
- 96.240
- 85.735
- 82.722
- 77.321
- 77.000
- 76.687
- 70.068
- 66.997
- 66.289
- 63.021
- 40.504
- 36.528
- 36.314
- 36.108
- 33.737
- 31.901
- 26.031
- 25.035
- 24.714
- 21.660
- 17.494
- 16.967
- 14.539
- 11.245
- 4.067
- 4.199

