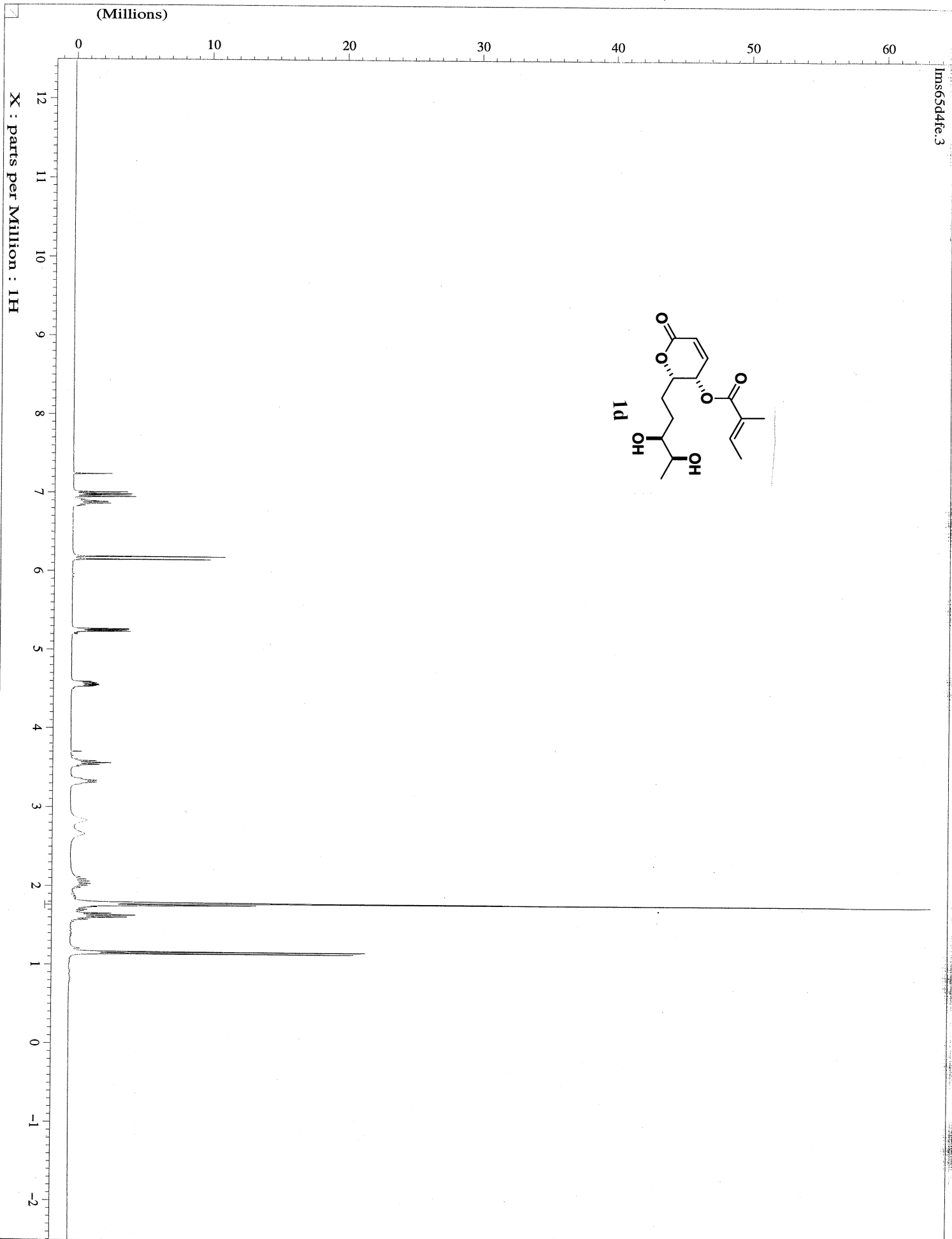


## Supporting Information

### List of $^1\text{H}$ and $^{13}\text{C}$ NMR Spectra

$^1\text{H}$ and $^{13}\text{C}$ NMR Spectra of <b>1d</b> .....	S 2-3
$^1\text{H}$ and $^{13}\text{C}$ NMR Spectra of <b>16</b> .....	S 4-5
$^1\text{H}$ and $^{13}\text{C}$ NMR Spectra of <b>6</b> .....	S 6-7
$^1\text{H}$ and $^{13}\text{C}$ NMR Spectra of <b>1e</b> .....	S 8-9

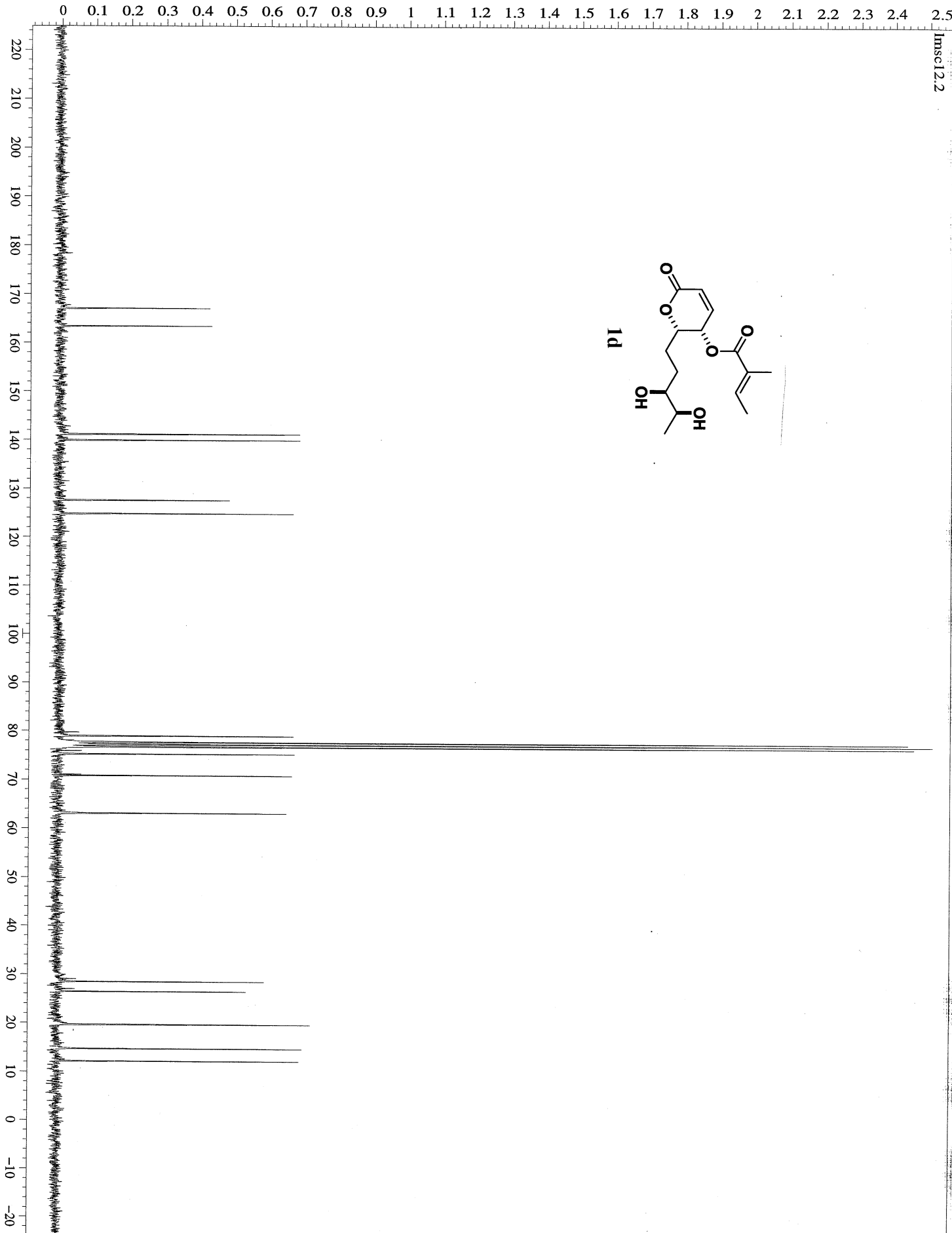
Im65d4fe.3



(Billions)

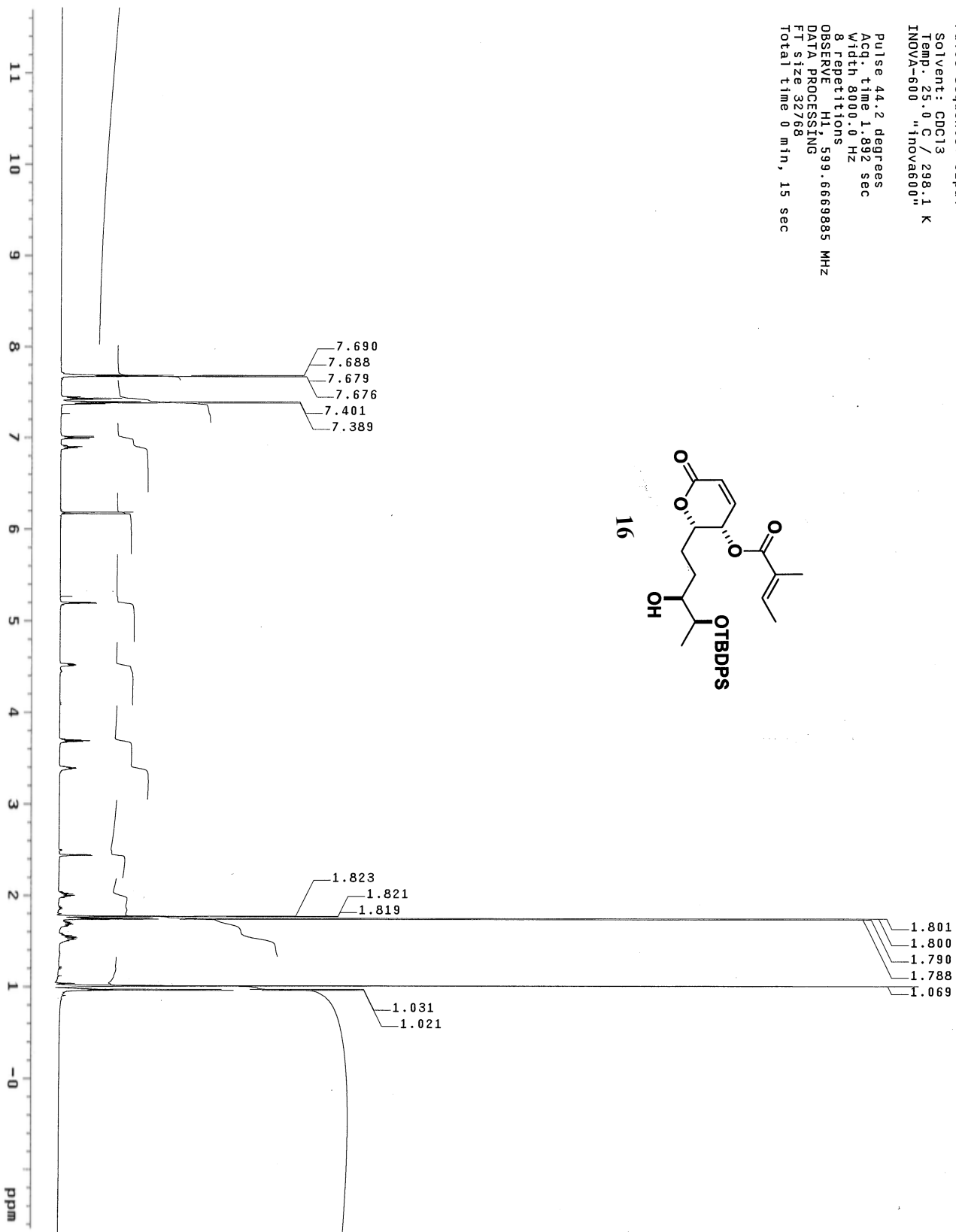
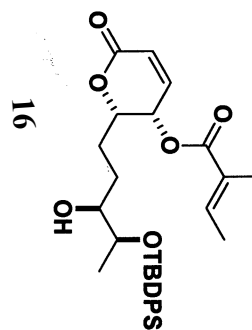
msc12.2

X : parts per Million : 13C



STANDARD PROTON PARAMETERS

Pulse Sequence: szpu1  
Solvent: CDCl3  
Temp: 25.0 C / 298.1 K  
INOVA-600 "inovaa600"  
Pulse 44.2 degrees  
Acq. time 1.892 sec  
Width 8000.0 Hz  
8 repetitions  
OBSERVE: H1, 599.6669885 MHz  
DATA PROCESSING  
FT size 32768  
Total time 0 min, 15 sec



STANDARD CARBON PARAMETERS

Pulse Sequence: s2pul1

Solvent: CDCl3

Temp: 25.0 C / 298.1 K

User: I-14-87

INVA-600 "inovae600"

Pulse 34.9 degrees

Acq. time 1.300 sec

Width 37505.9 Hz

384 repetitions

OBSERVE C13, 150.7863984 MHz

DECOUPLE H1, 599.6700024 MHz

Power 41 dB

continuously on

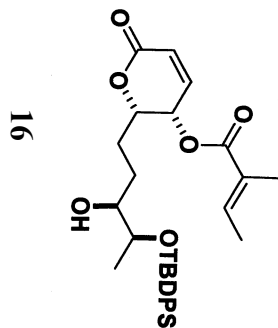
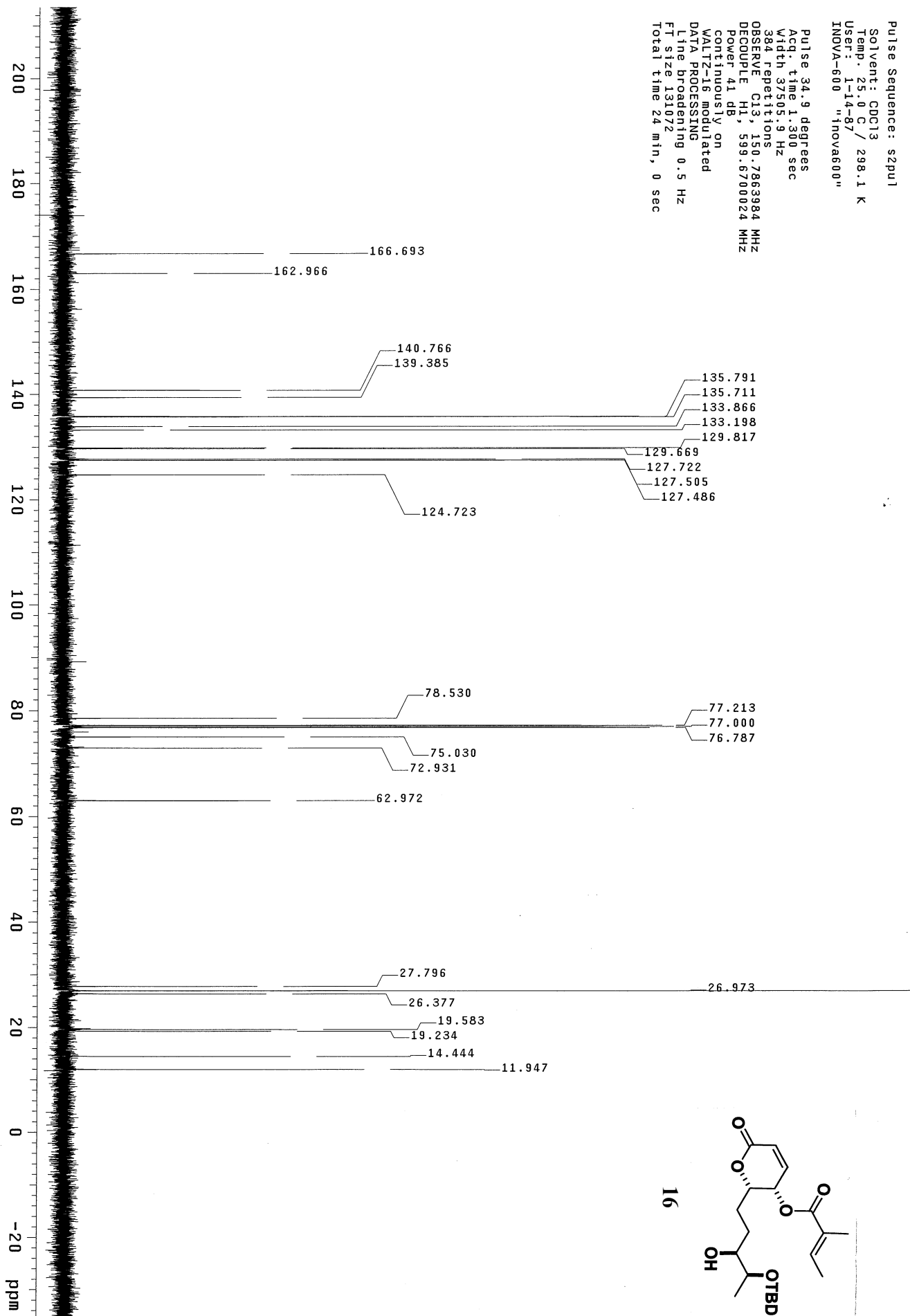
WALTZ-16 modulated

DATA PROCESSING

Line broadening 0.5 Hz

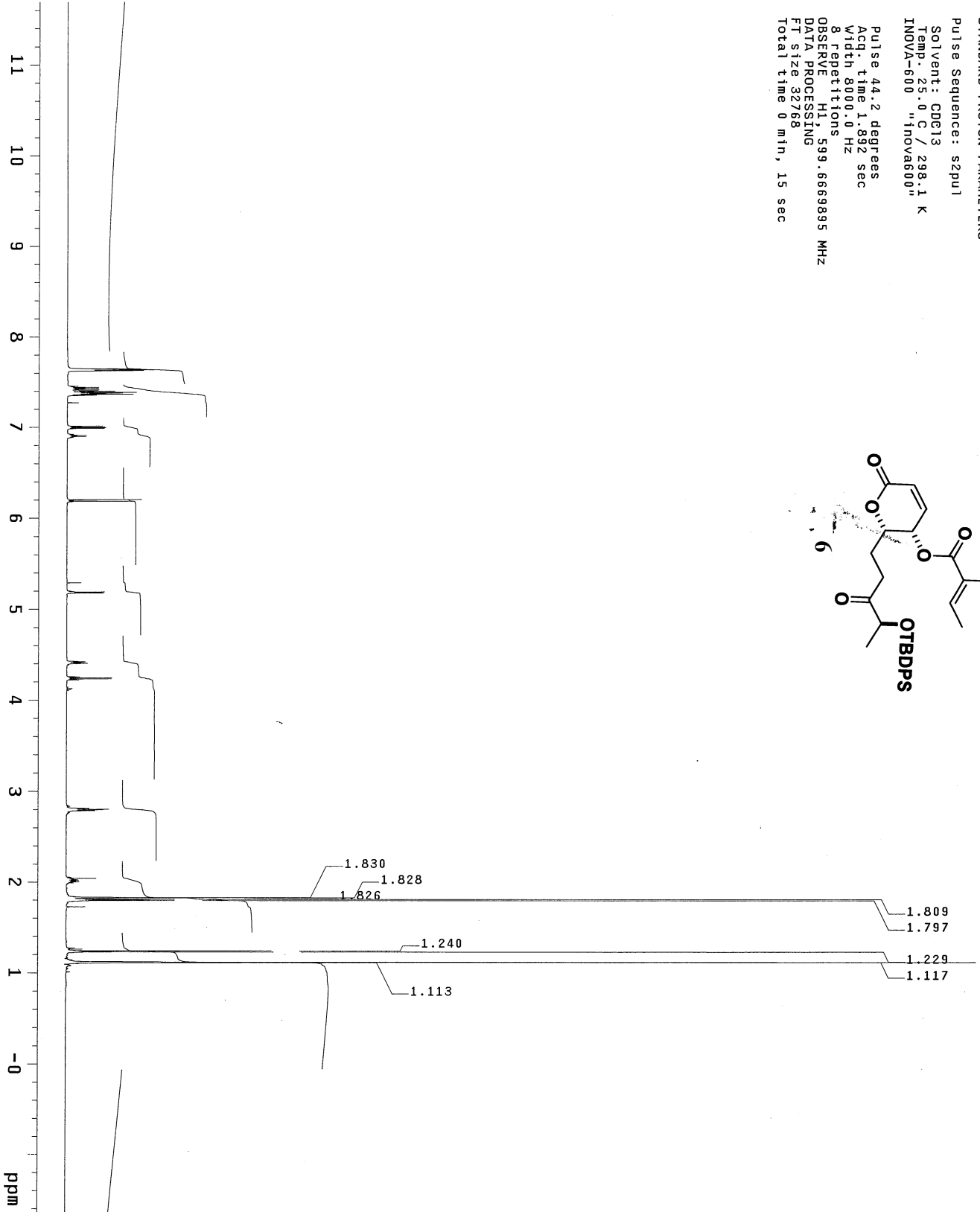
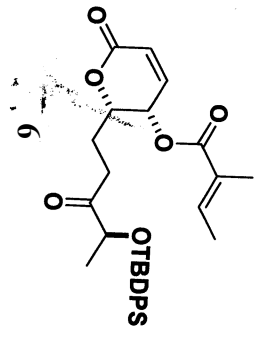
FT size 131072

Total time 24 min, 0 sec



STANDARD PROTON PARAMETERS

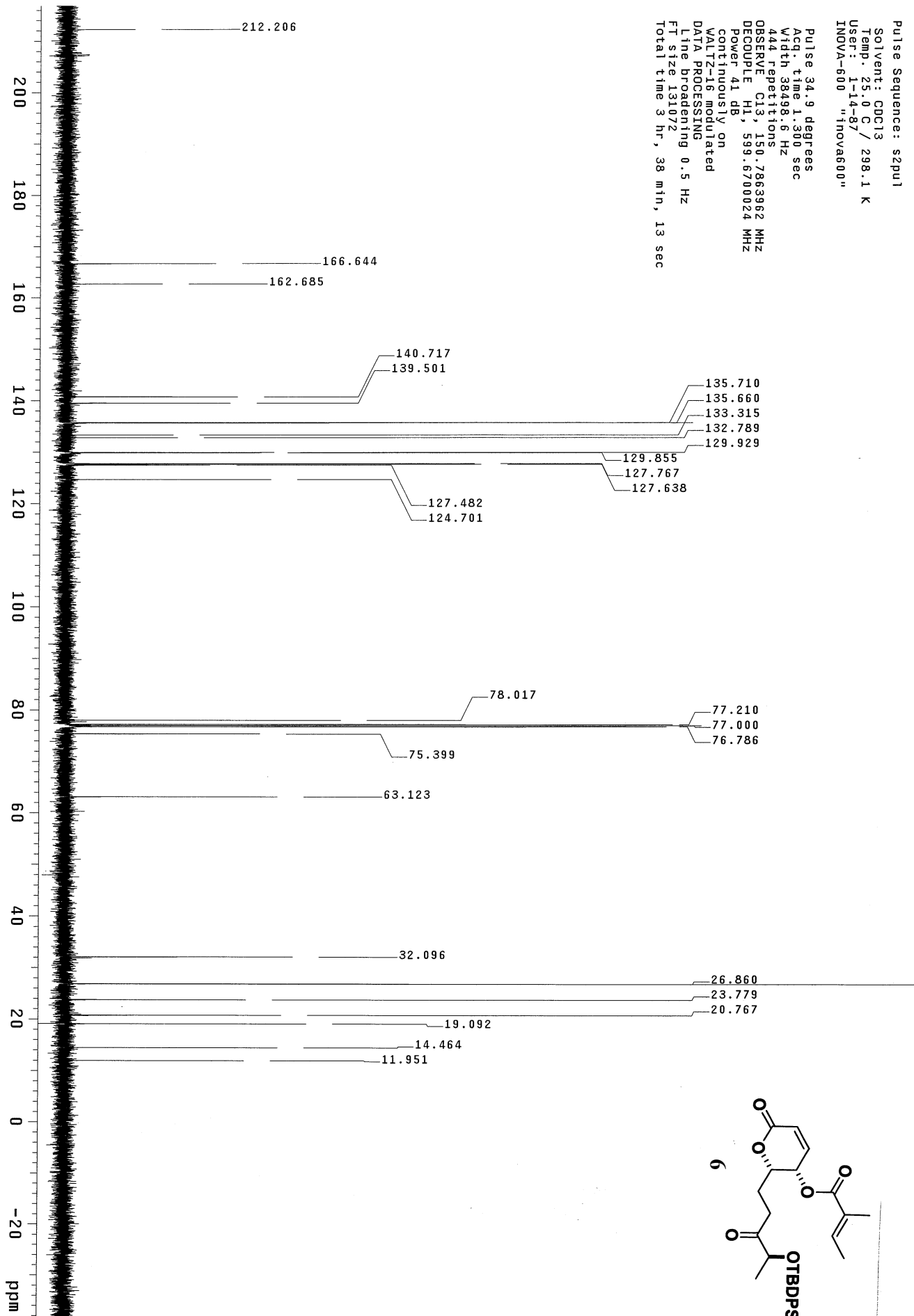
Pulse Sequence: szpu1  
Solvent: CDCl3  
Temp: 25.0 C / 298.1 K  
INOVA-600 "inovae600"  
Pulse 44.2 degrees  
Acq. time 1.892 sec  
Width 8000.0 Hz  
8 repetitions  
OBSERVE H1, 599.6669895 MHz  
DATA PROCESSING  
F1 size 32768  
Total time 0 min, 15 sec



STANDARD CARBON PARAMETERS

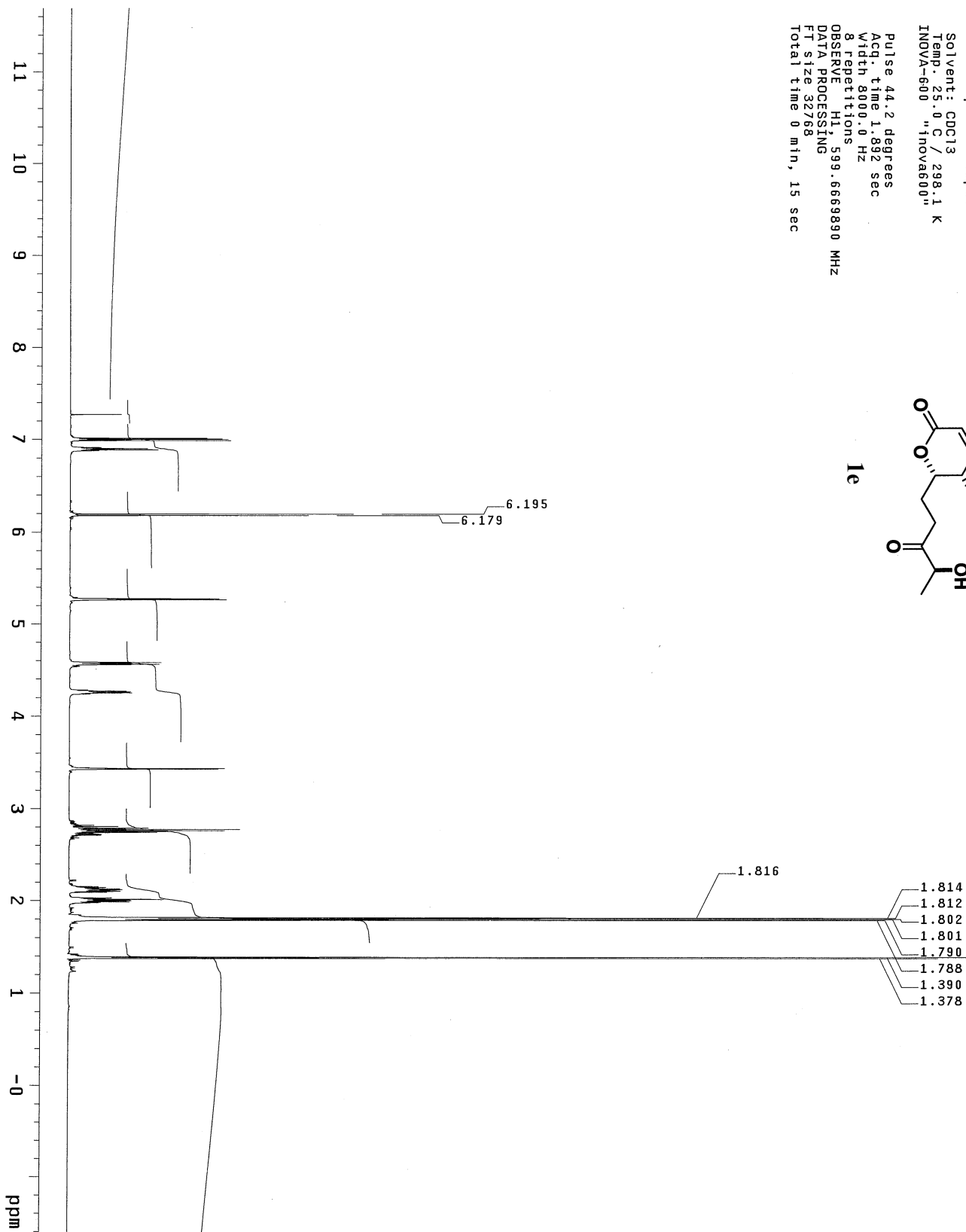
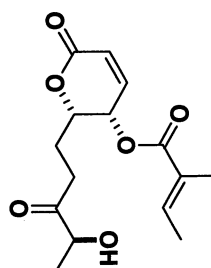
Pulse Sequence: s2pu1  
Solvent: CDCl3  
Temp: 25.0 C / 298.1 K  
User: 1-14-87  
INOVA-600 "inova600"

Pulse 34.9 degrees  
Acq. time 1.300 sec  
Width 38498.6 Hz  
444 repetitions  
OBSERVE C13, 150.786362 MHz  
DECOUPLE H1, 599.6700024 MHz  
Power 41 db  
continuously on  
WALTZ-16 modulated  
DATA PROCESSING  
Line broadening 0.5 Hz  
FT size 131072  
Total time 3 hr, 38 min, 13 sec



STANDARD PROTON PARAMETERS

Pulse Sequence: s2pu1  
Solvent: CDCl3  
Temp: 25.0 C / 298.1 K  
INOVA-600 "Inova600"  
Pulse 44.2 degrees  
Acq. time 1.892 sec  
Width 8000.0 Hz  
8 repetitions  
OBSERVE H1 599.6668890 MHz  
DATA PROCESSING  
F1 size 32768  
Total time 0 min, 15 sec



STANDARD CARBON PARAMETERS

Pulse Sequence: szpul

Solvent: CDCl3

Temp: 25.0 C / 298.1 K

User: 1-14-87

INOVA-600 "inovae600"

Pulse 34.9 degrees

Acq. time 1.300 sec

Width 37505.9 Hz

348 Repetitions

OBSERVE C13, 150.7863932 MHz

DECOUPLE H1, 599.6700024 MHz

Power 41 dB

continuously on

WALTZ-16 modulated

DATA PROCESSING

Line broadening 0.5 Hz

FT size 131072

Total time 3 hr, 38 min, 13 sec

