

**CONSTRUCTION OF QUATERNARY CARBON CENTER BY THE
REACTION OF AZA-*o*-QUINONE METHIDE MEDIATED
CARBOCATION INTERMEDIATE**

Yukiko Karuo, Shintaro Dousei, Minori Sakamoto, Atsushi Tarui, Kazuyuki Sato,
Kentaro Kawai, and Masaaki Omote*

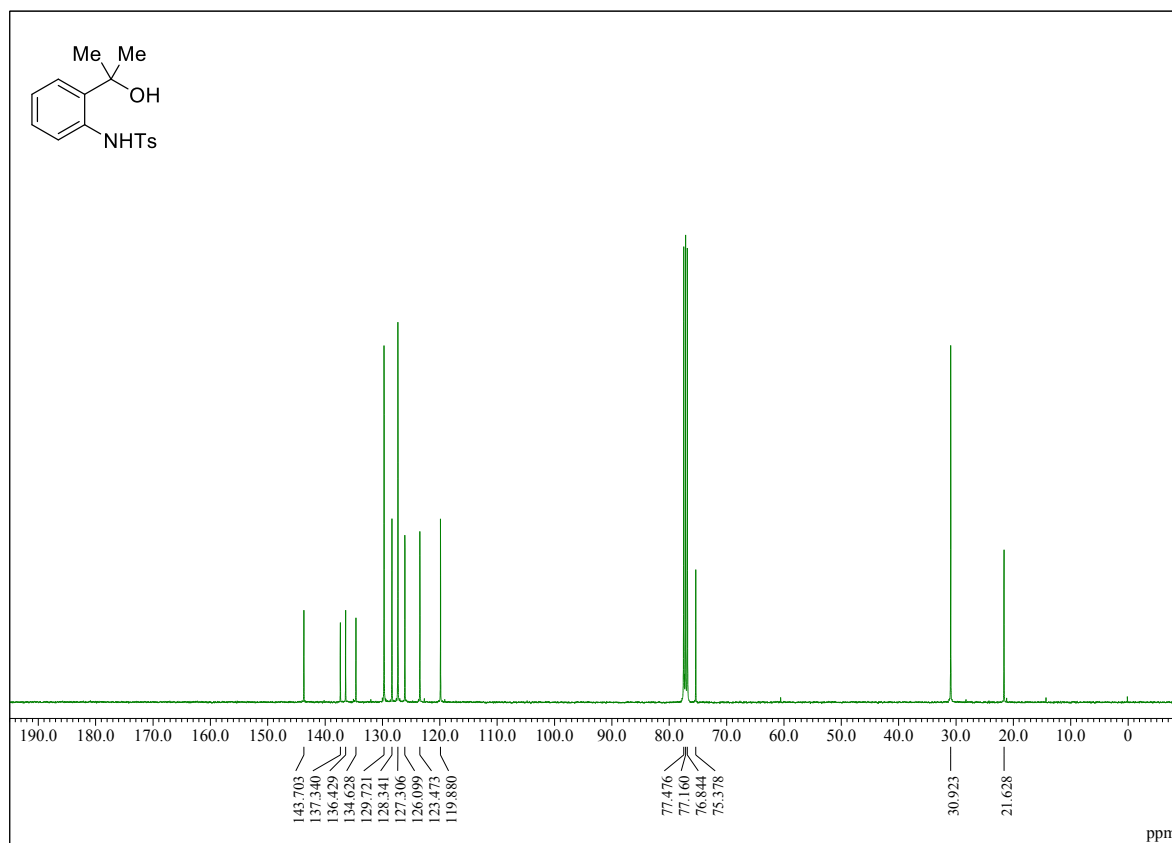
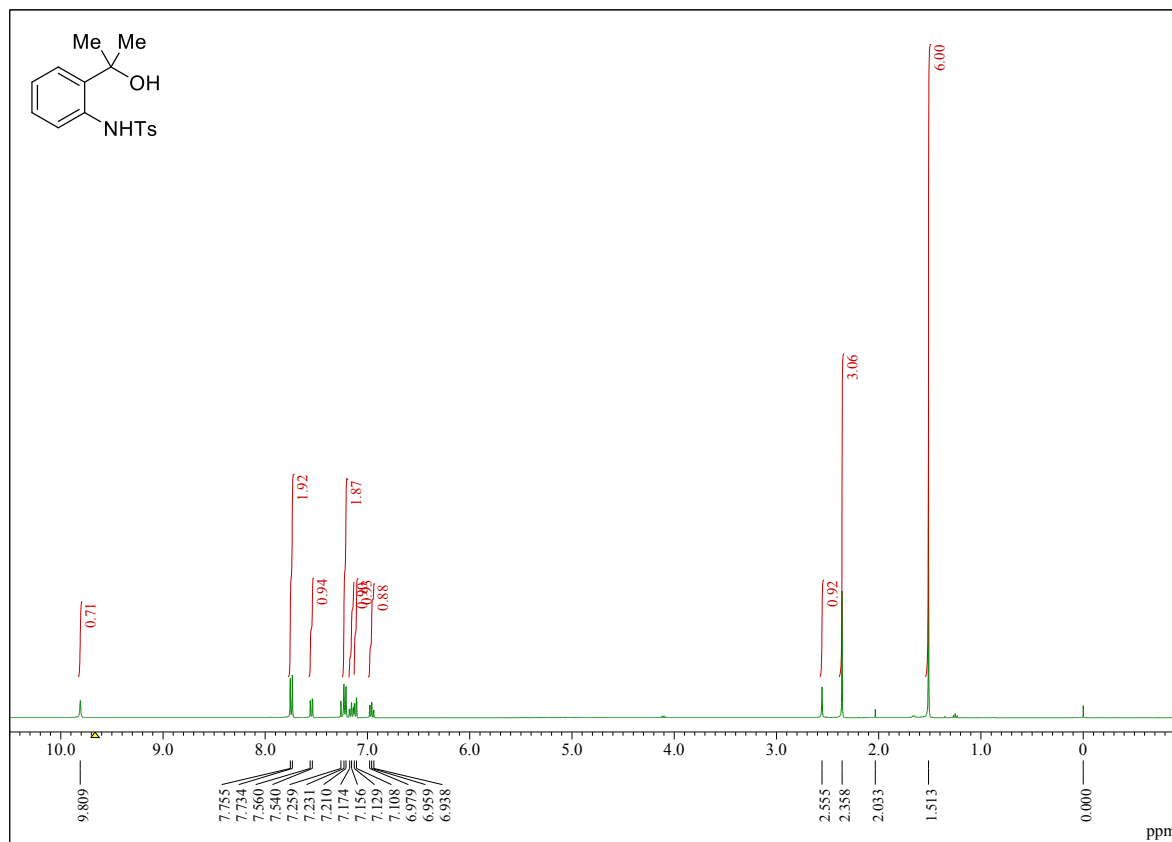
*Faculty of Pharmaceutical Sciences, Setsunan University
45-1, Nagaotoge-cho, Hirakata, Osaka 573-0101, Japan
E-mail: omote@pharm.setsunan.ac.jp*

Supporting Information

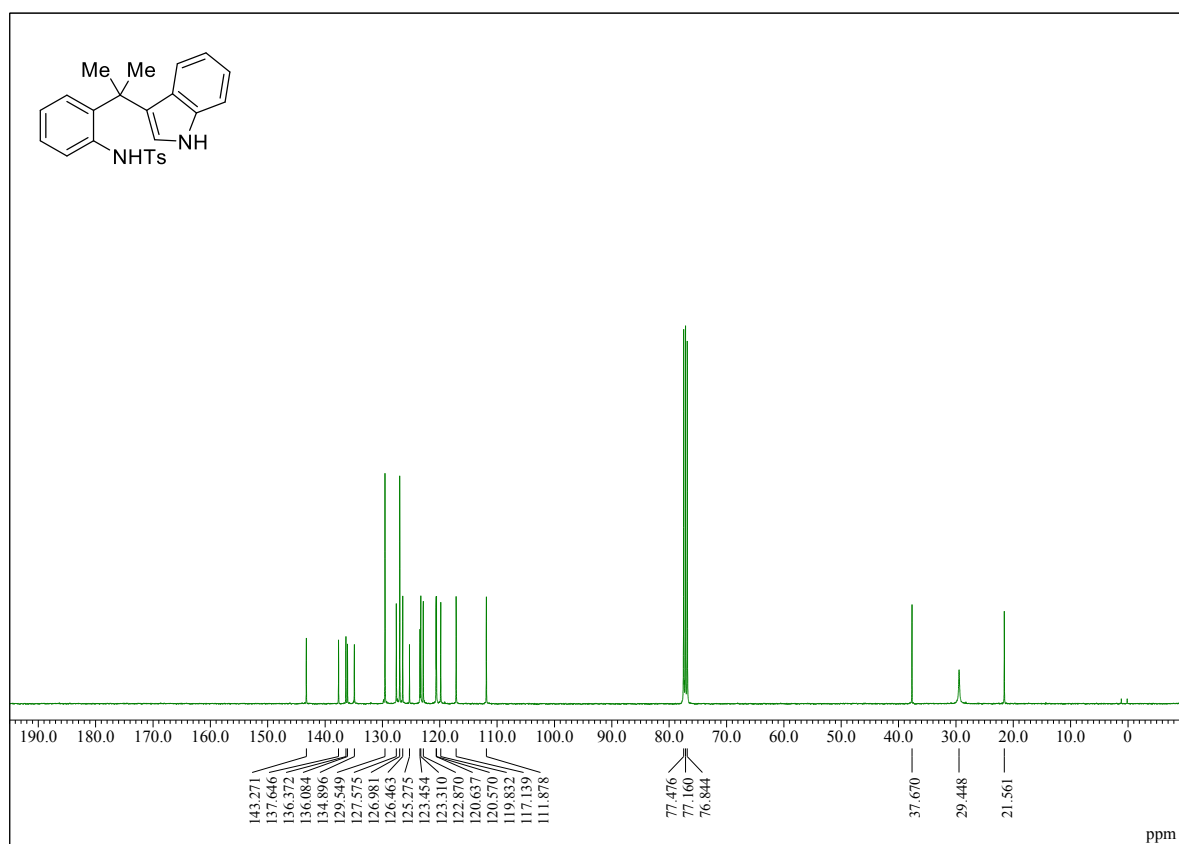
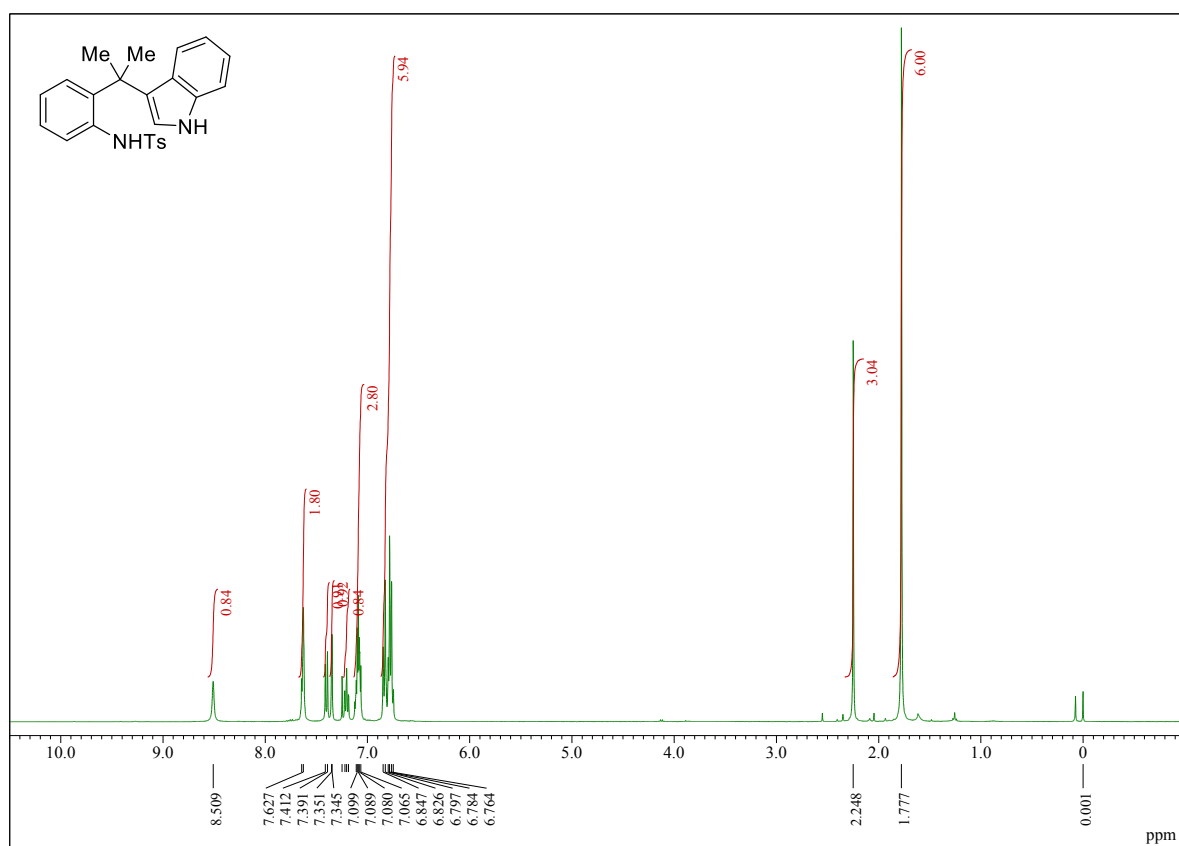
¹H and ¹³C NMR Charts..... S2-S11

¹H and ¹³C NMR Charts

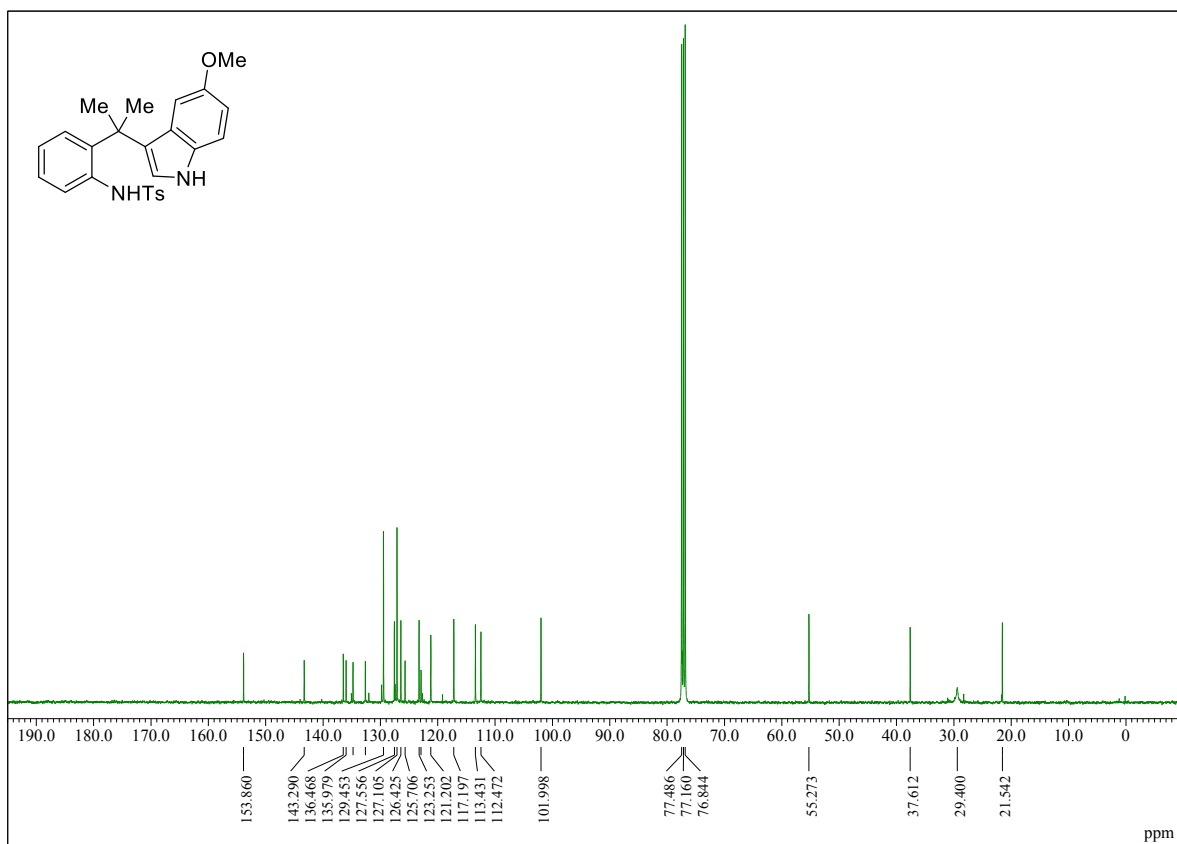
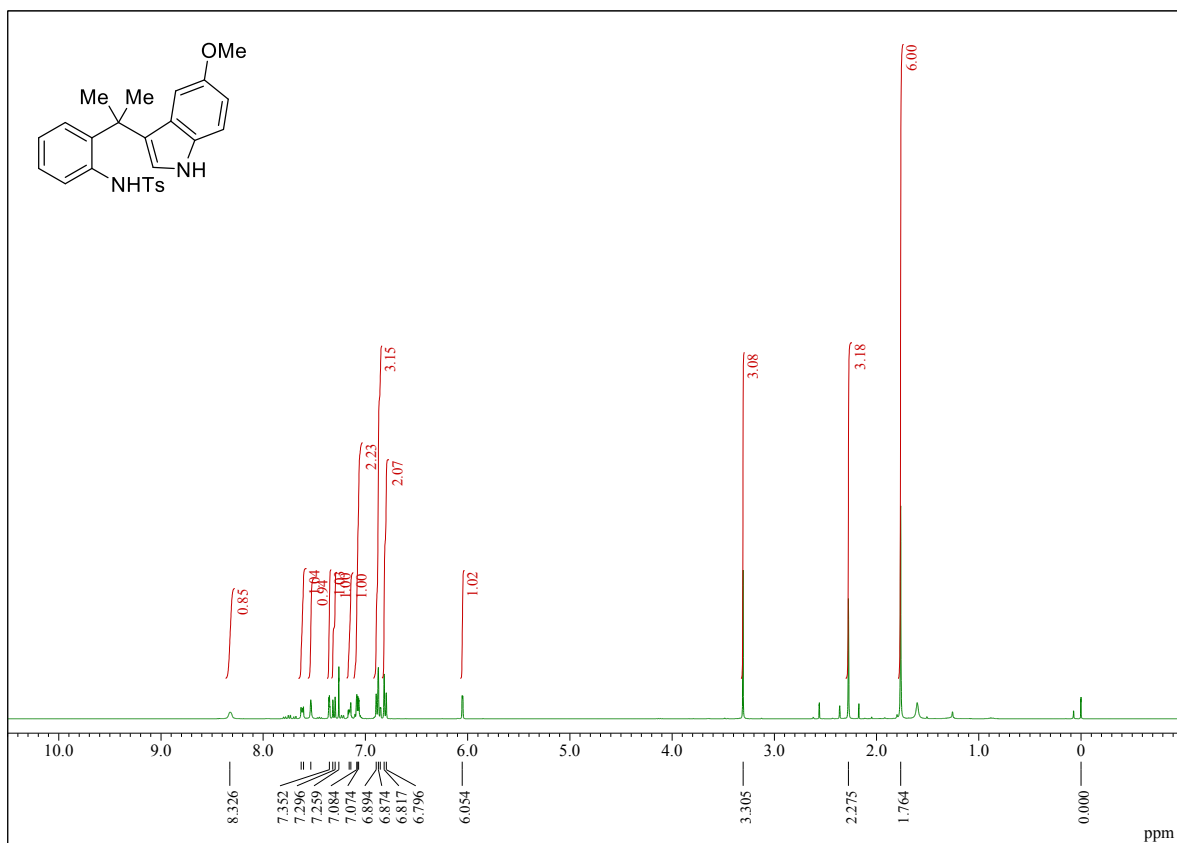
N-(2-(1-hydroxy-1-methylethyl)phenyl)-4-methylbenzenesulfonamide (1)



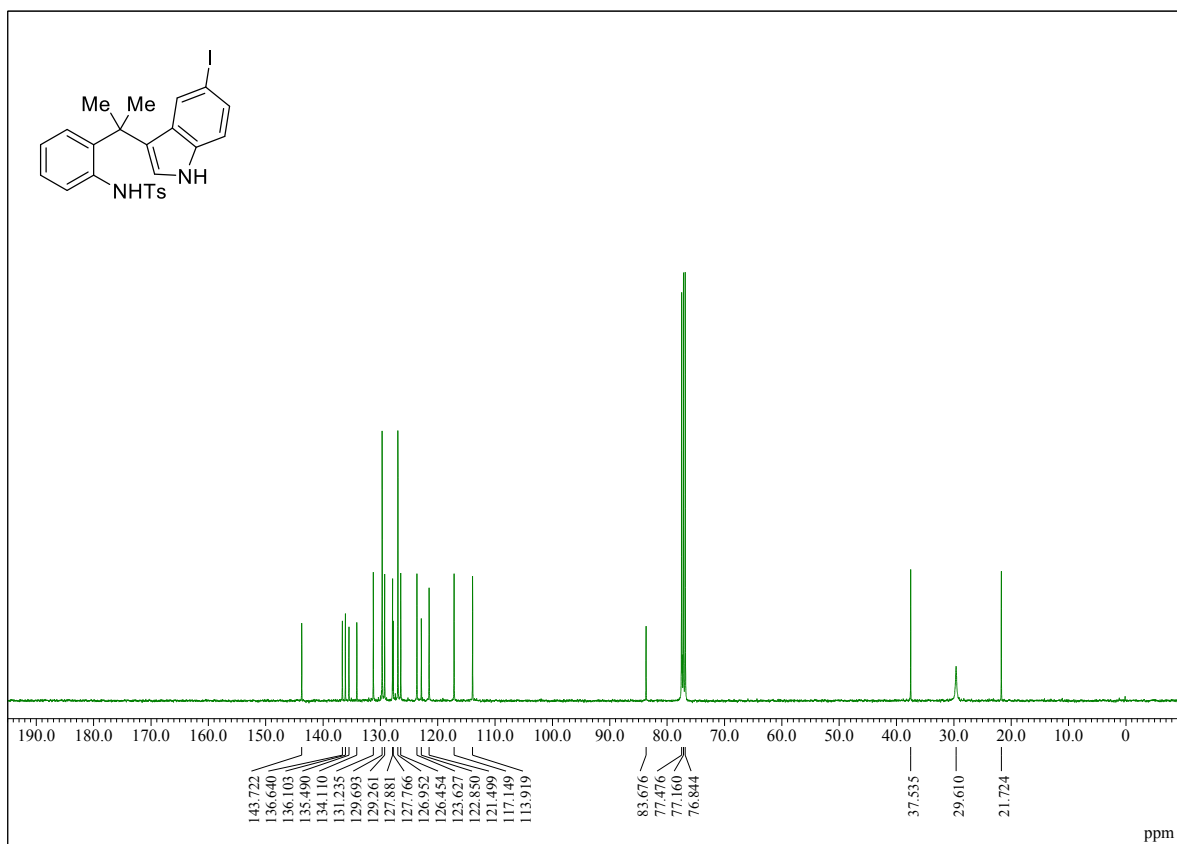
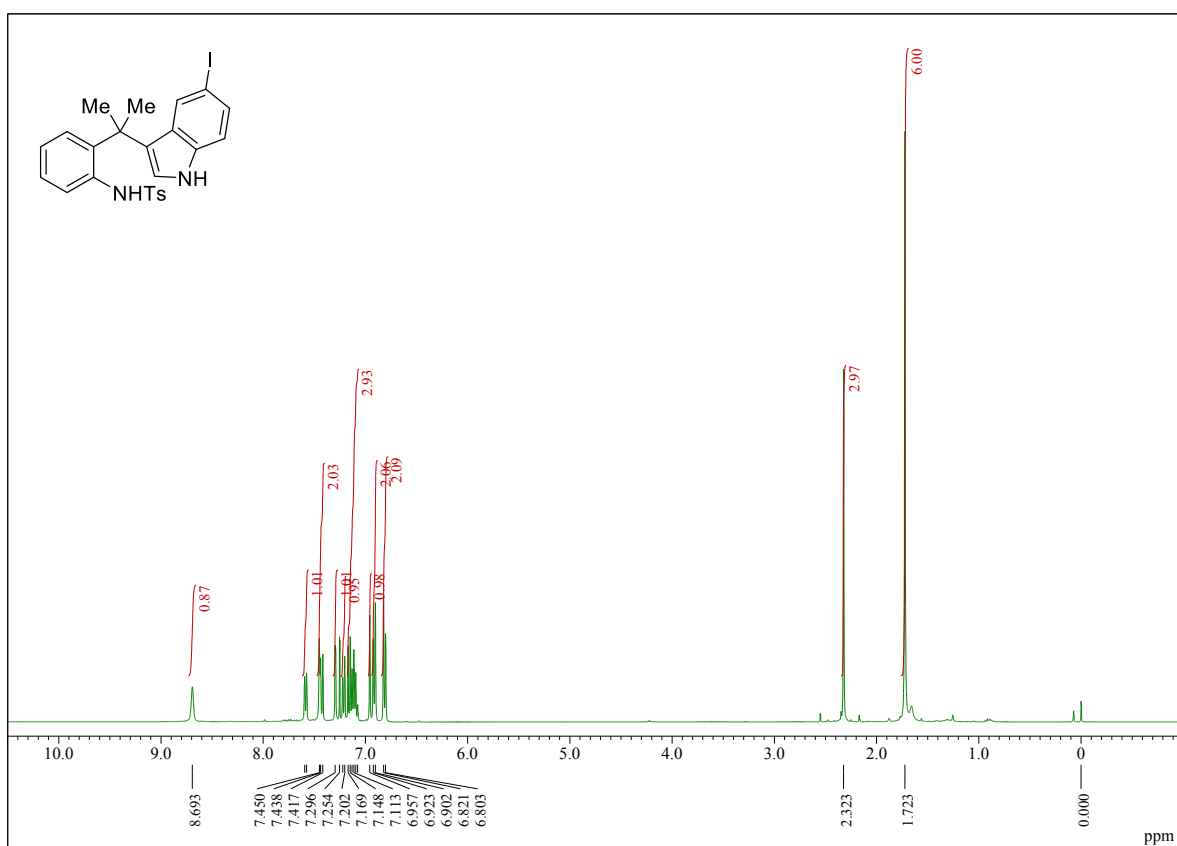
***N*-2-(1-(1H-indole-3-yl)-1-methylethyl)phenyl-4-methylbenzenesulfonamide (3a)**



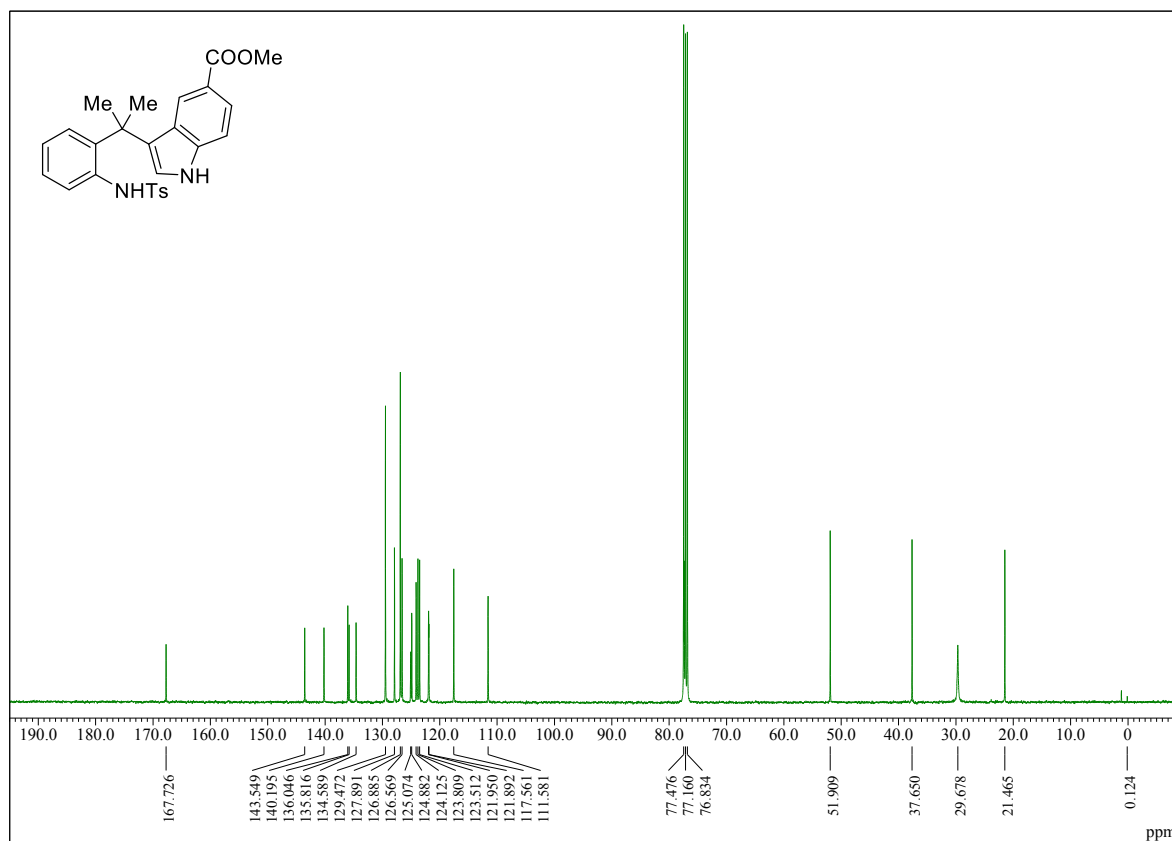
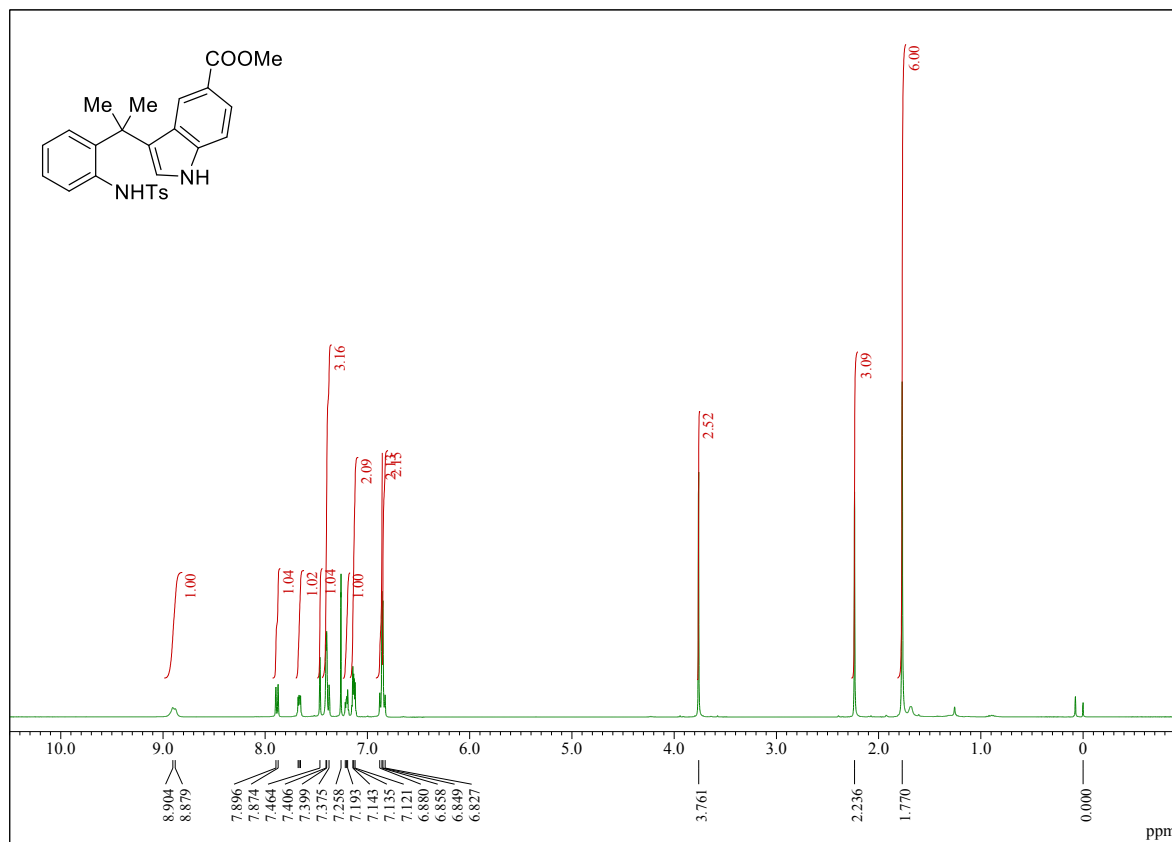
***N*-2-(1-(1H-5-methoxy-indole-3-yl)-1-methylethyl)phenyl)-4-methylbenzenesulfonamide (3b)**



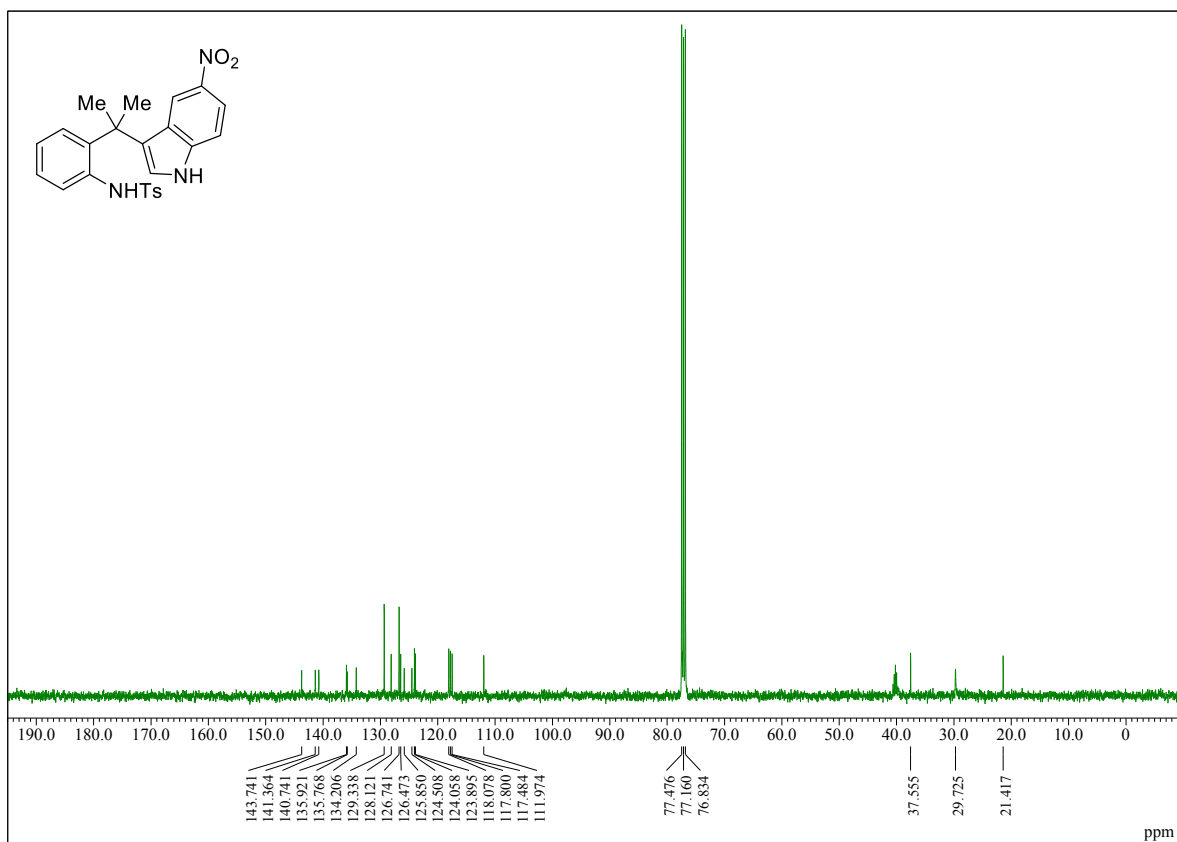
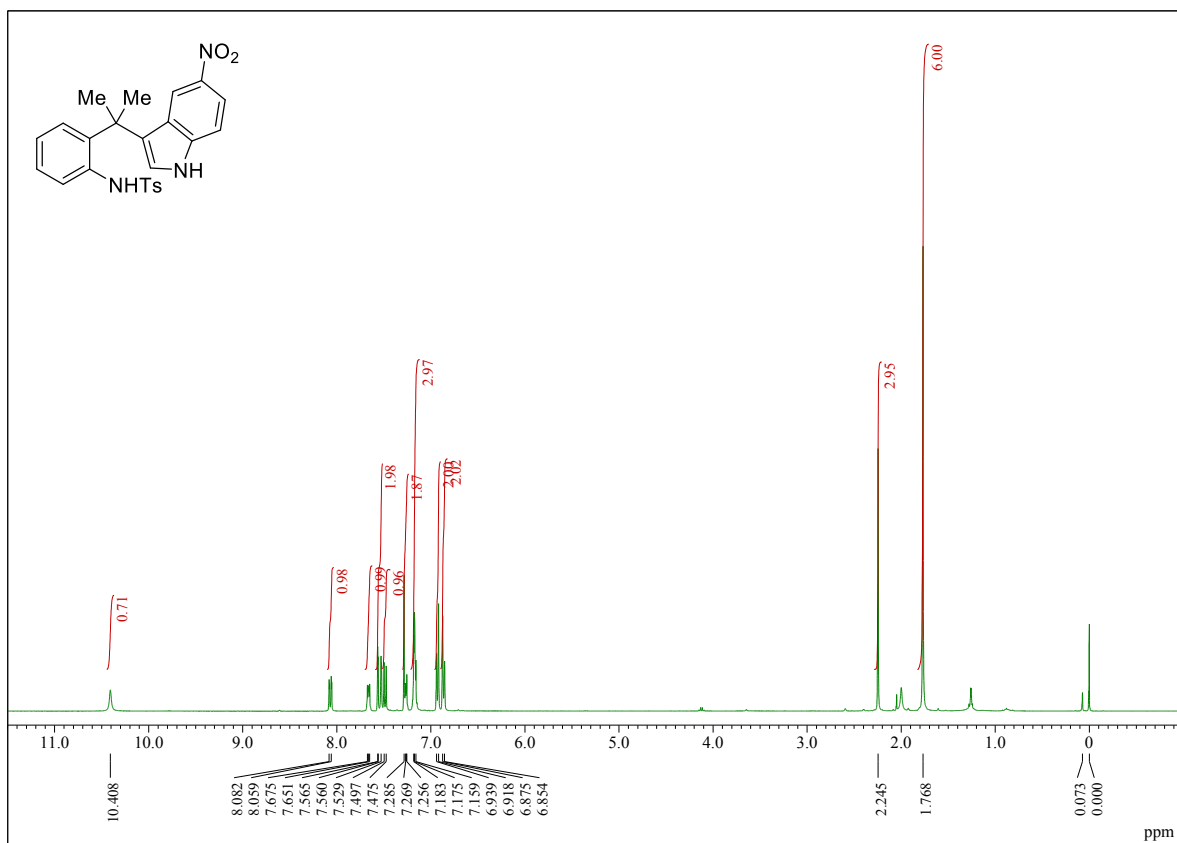
***N*-2-(1-(1*H*-5-iodo-indole-3-yl)-1-methylethyl)phenyl)-4-methylbenzenesulfonamide (3c)**



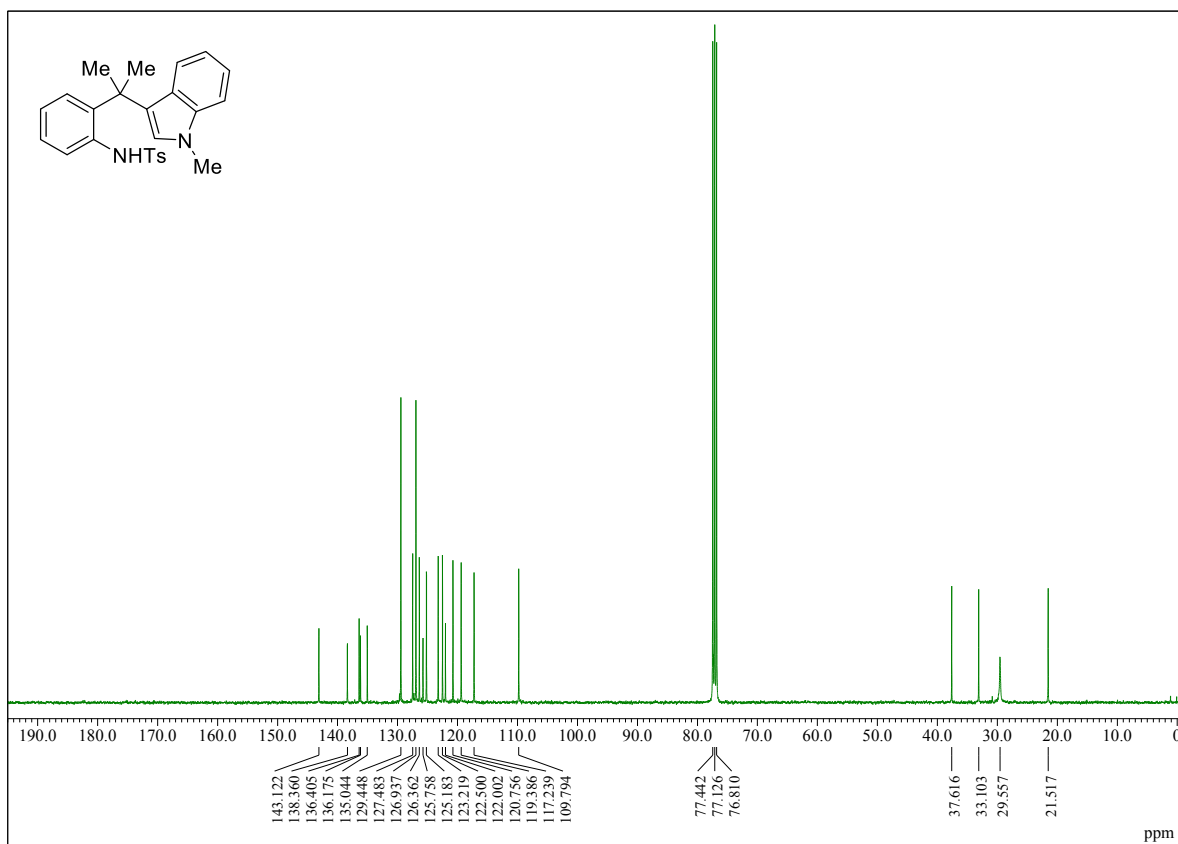
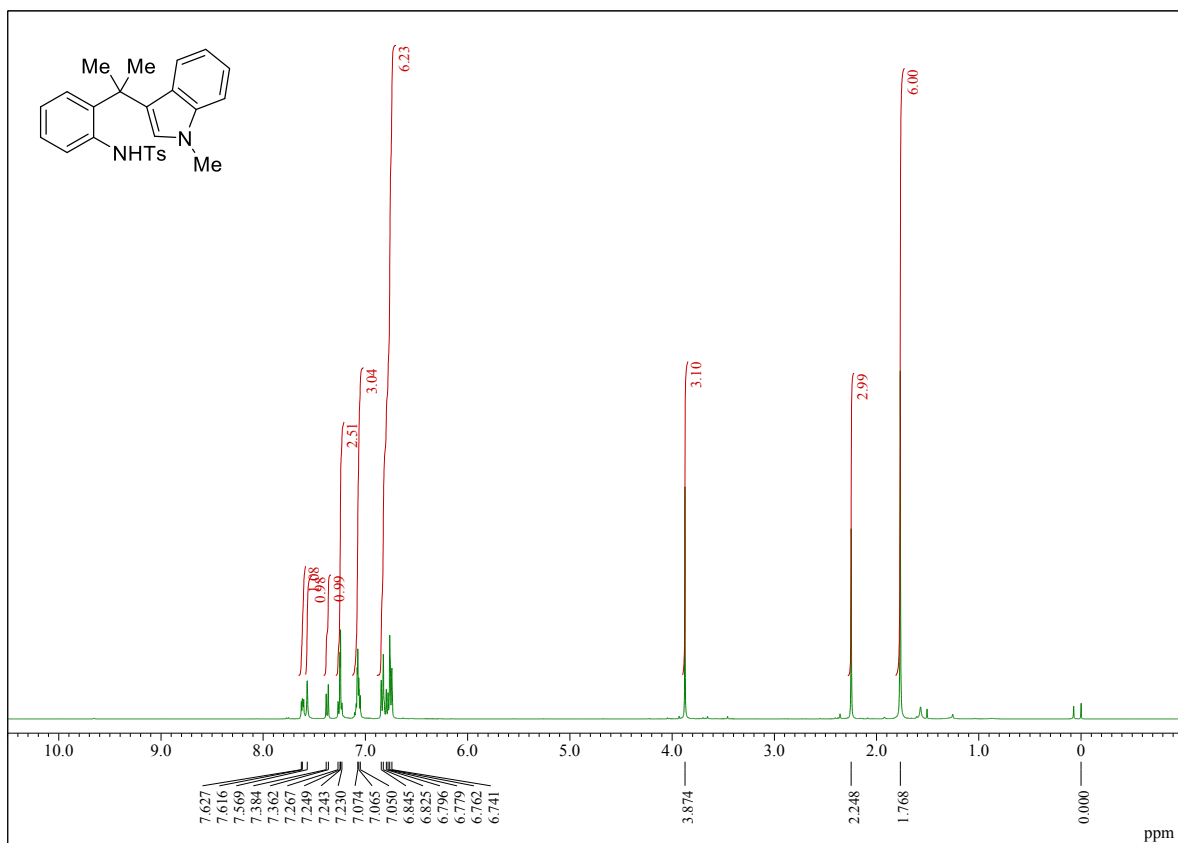
***N*-[2-(1-(1*H*-5-methoxycarbonyl-indole-3-yl)-1-methylethyl)phenyl]-4-methylbenzenesulfonamide (3d)**



***N*-[2-(1-(1H-5-nitro-indol-3-yl)-1-methylethyl)phenyl]-4-methylbenzenesulfonamide (3e)**

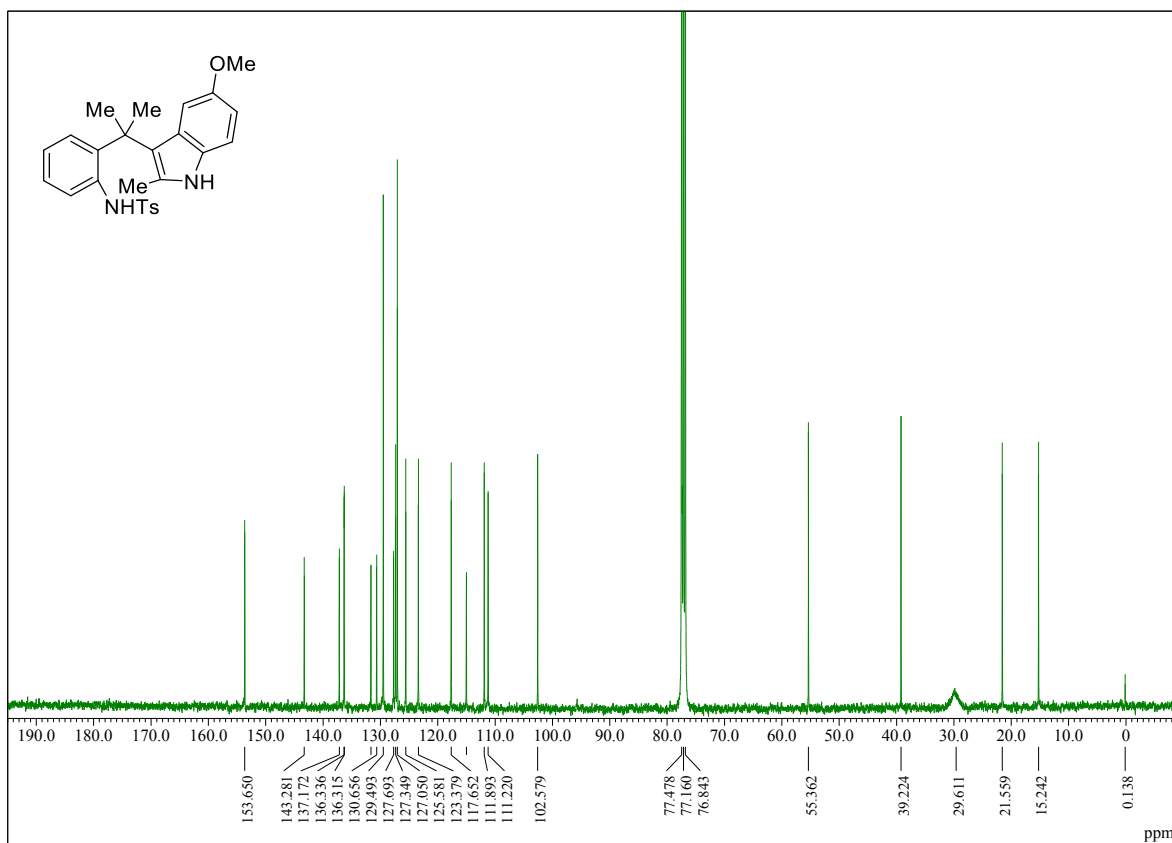
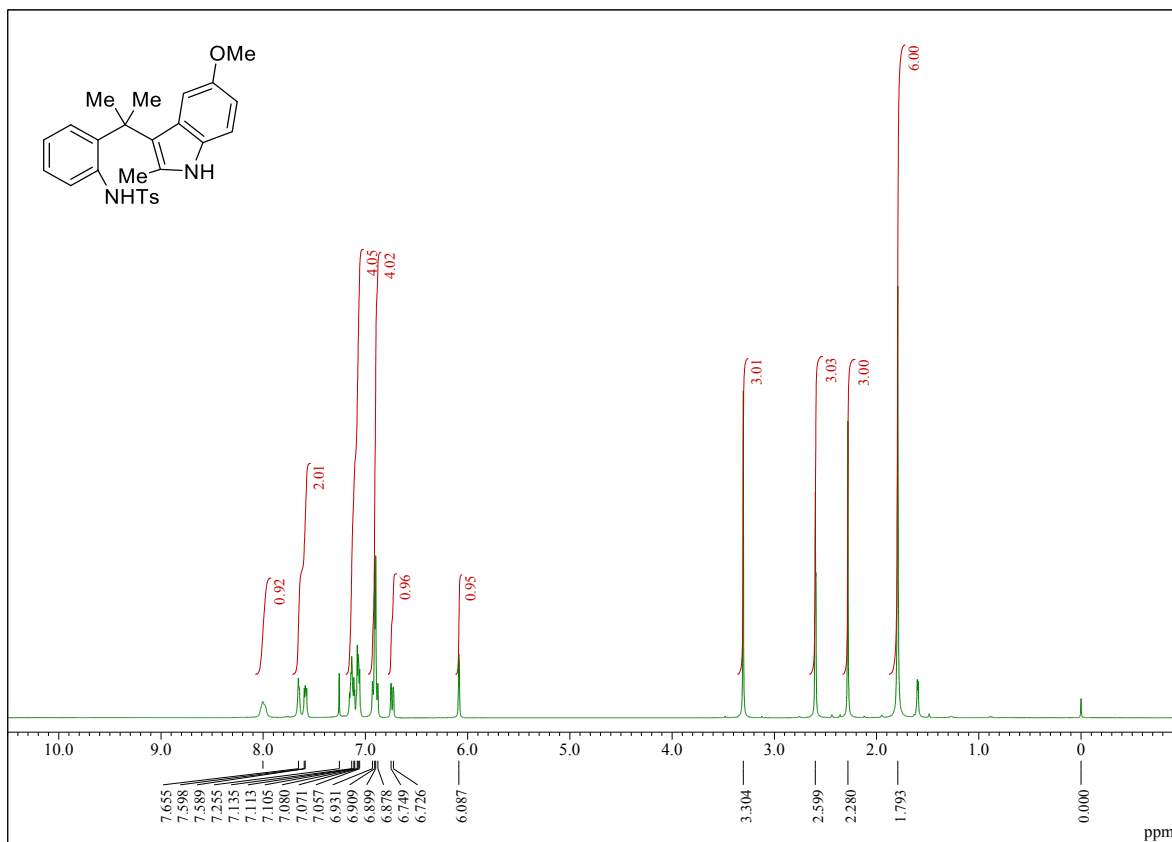


***N*-2-(1-(1-methyl-indole-3-yl)-1-methylethyl)phenyl)-4-methylbenzenesulfonamide (3f)**

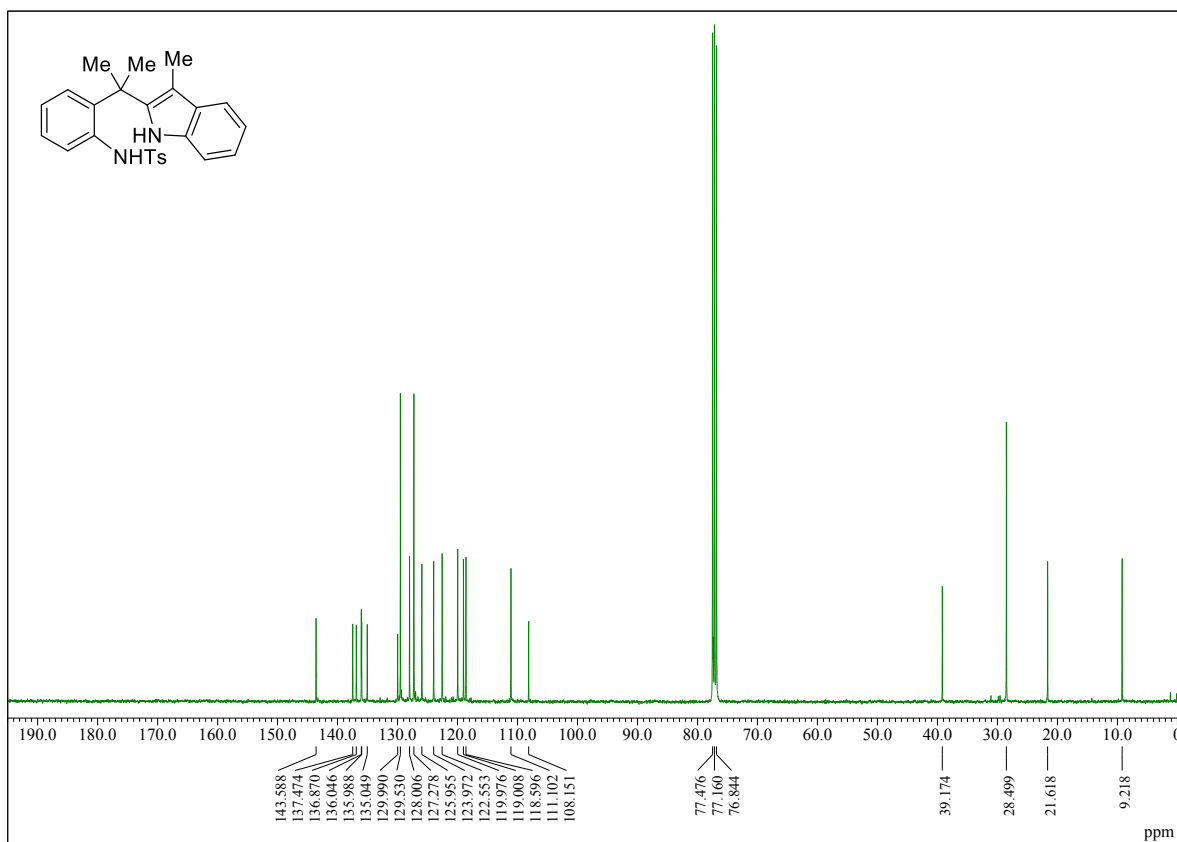
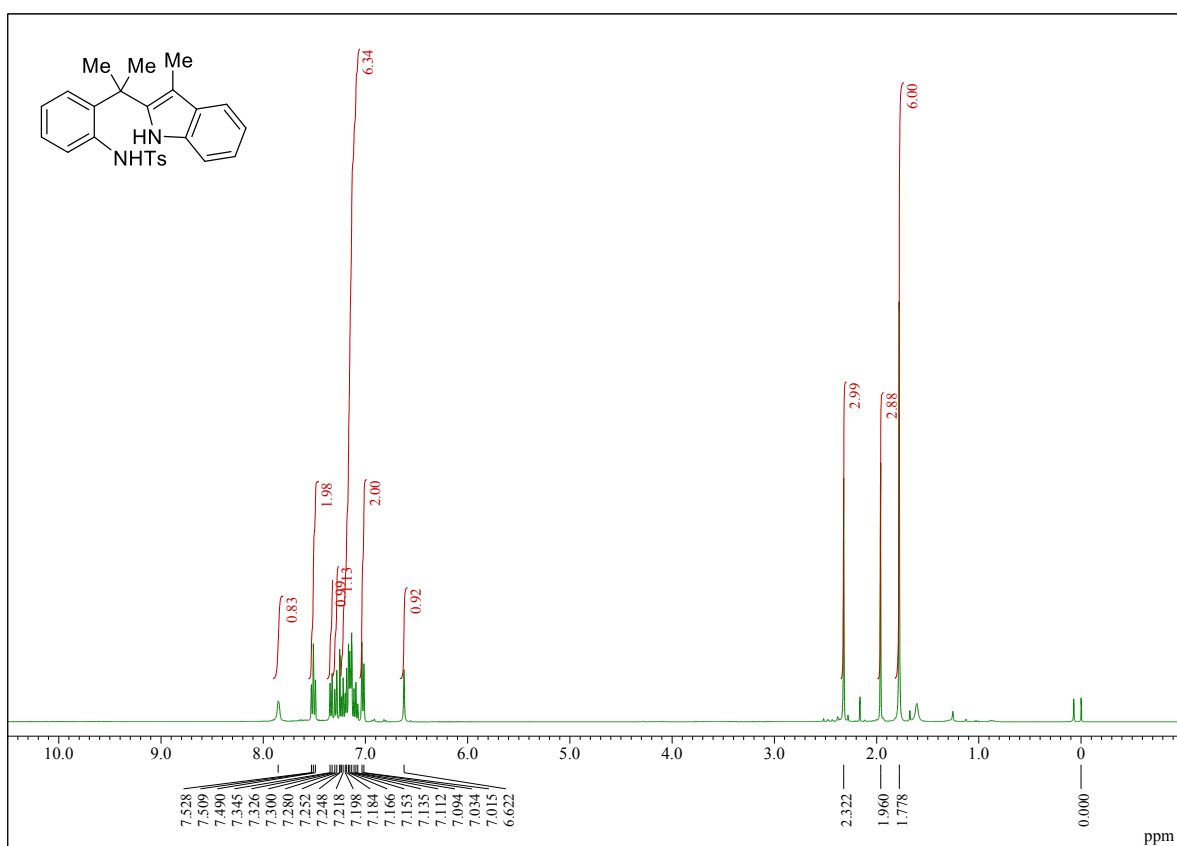


***N*-[2-(1-(5-methoxy-2-methyl-indole-3-yl)-1-methylethyl)phenyl]-4-methylbenzenesulfonamide**

(3g)



***N*-2-(1-(3-methyl-indole-2-yl)-1-methylethyl)phenyl)-4-methylbenzenesulfonamide (3h)**



***N*-(2-(1-methylethenyl)phenyl)-4-methylbenzenesulfonamide (5)**

