

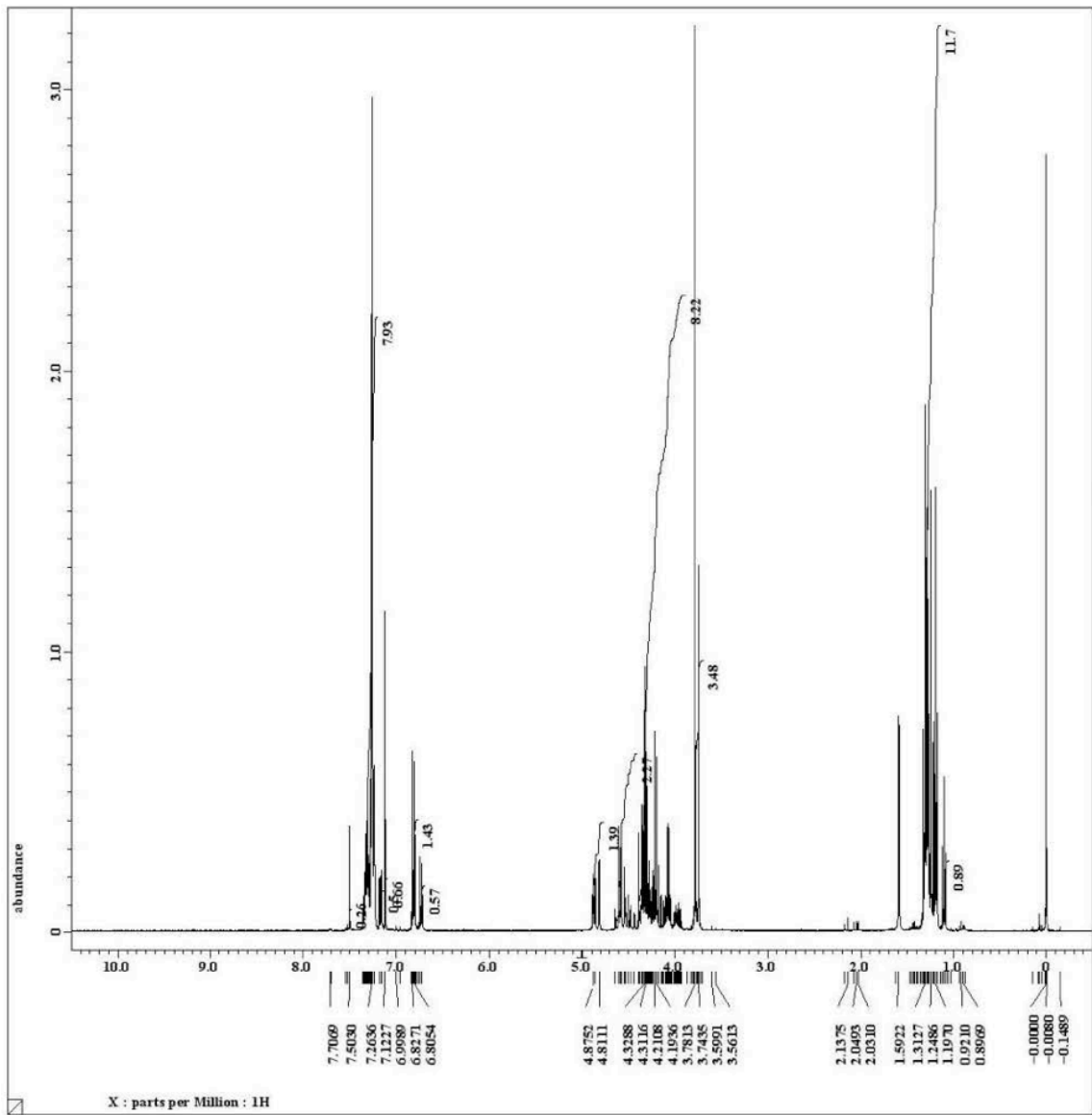
Decisive Effects of C-N Axial Chirality of the Intermediary Enolates on the Stereochemical Course of β -Lactam Formation from β -Branched α -Amino acid Derivatives via Memory of Chirality

Ryuichi Hyakutake, Tomoyuki Yoshimura, Takahiro Sasamori, Norihiro Tokitoh, Kazuhiro Morisaki, and Takeo Kawabata*

Supporting Information

Table of Contents

^1H - and ^{13}C -NMR spectra of compound 10	SI2
^1H - and ^{13}C -NMR spectra of compound 11	SI4
^1H - and ^{13}C -NMR spectra of compound 15	SI6
NOESY spectra of compound 15	SI9
^1H - and ^{13}C -NMR spectra of compound 16	SI11
NOE and NOESY spectra of compound 16	SI14
^1H - and ^{13}C -NMR spectrum of compound 17	SI16
^1H -NMR spectrum of compound <i>ent</i> - 15	SI18
^1H - and ^{13}C NMR spectrum of compound 19	SI19



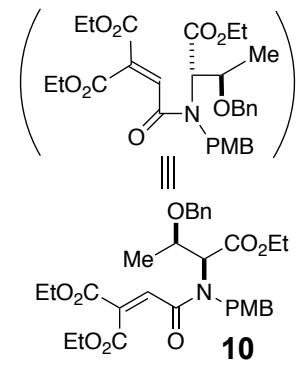
```

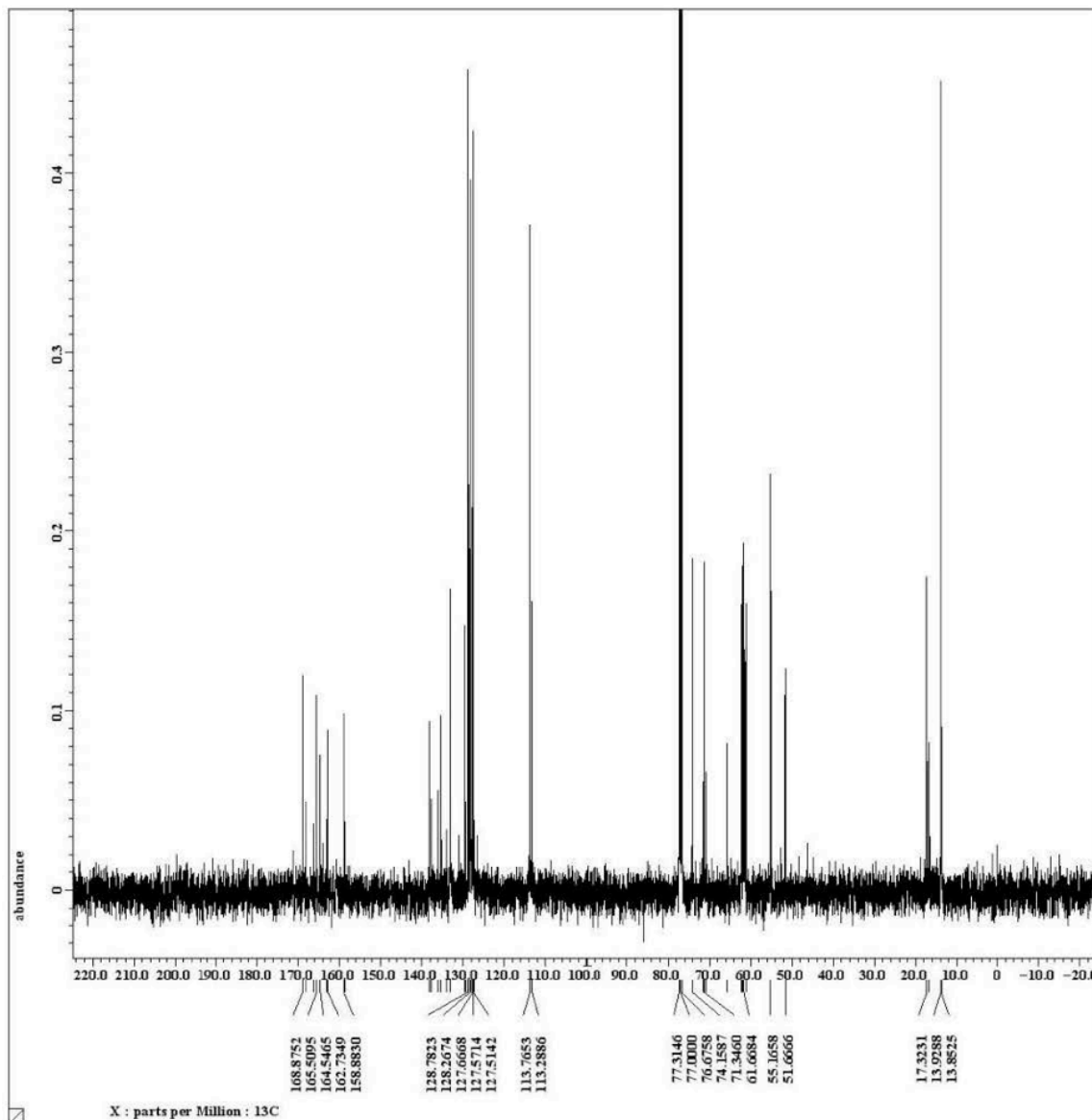
Filename      = RH632-PTLC-after-colu
Author       = delta
Experiment   = single_pulse.ex2
Sample_id    = S0497138
Solvent      = CHLOROFORM-D
Creation time = 14-NOV-2012 06:36:13
Revision time = 21-OCT-2014 16:20:50
Current time  = 21-OCT-2014 16:20:58

Comment      = single_pulse
Data_format  = 1D_COMPLEX
Dim_size     = 13107
Dim_title    = 1H
Dim_units    = [ppm]
Dimensions   = X
Site         = ECX 400P
Spectrometer = DELTA2_HMR

Field strength = 9.389766[T] (400[MHz])
X_acq_duration = 2.18365952[s]
X_domain       = 1H
X_freq         = 399.78219838[MHz]
X_offset       = 5[ppm]
X_points       = 16384
X_prescans     = 1
X_resolution   = 0.45794685[MHz]
X_sweep        = 7.5030012[kHz]
Irx_domain     = 1H
Irx_freq       = 399.78219838[MHz]
Irx_offset     = 5[ppm]
Tri_domain     = 1H
Tri_freq       = 399.78219838[MHz]
Tri_offset     = 5[ppm]
Clipped        = FALSE
Mod_return     = 1
Scans          = 8
Total_scans    = 8

X_90_width    = 10.75[us]
X_acq_time     = 2.18365952[s]
X_angle        = 45[deg]
X_atn          = 0.3[dB]
X_pulse        = 5.375[us]
Irx_mode       = off
Tri_mode       = off
Dante_preset  = FALSE
Initial_wait   = 1[s]
Recvr_gain     = 38
Relaxation_delay = 5[s]
Repetition_time = 7.18365952[s]
Temp_get       = 18[dc]
  
```





```

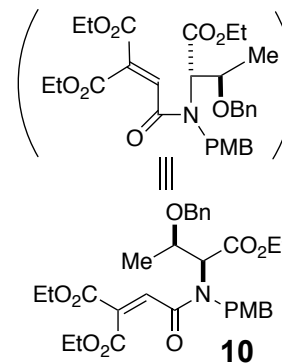
Filename      = RH656-13C-4.jdf
Author       = delta
Experiment   = single_pulse_dec
Sample_id    = a
Solvent      = CHLOROFORM-D
Creation time = 22-FEB-2013 12:37:30
Revision time = 21-OCT-2014 16:17:06
Current time  = 21-OCT-2014 16:17:11

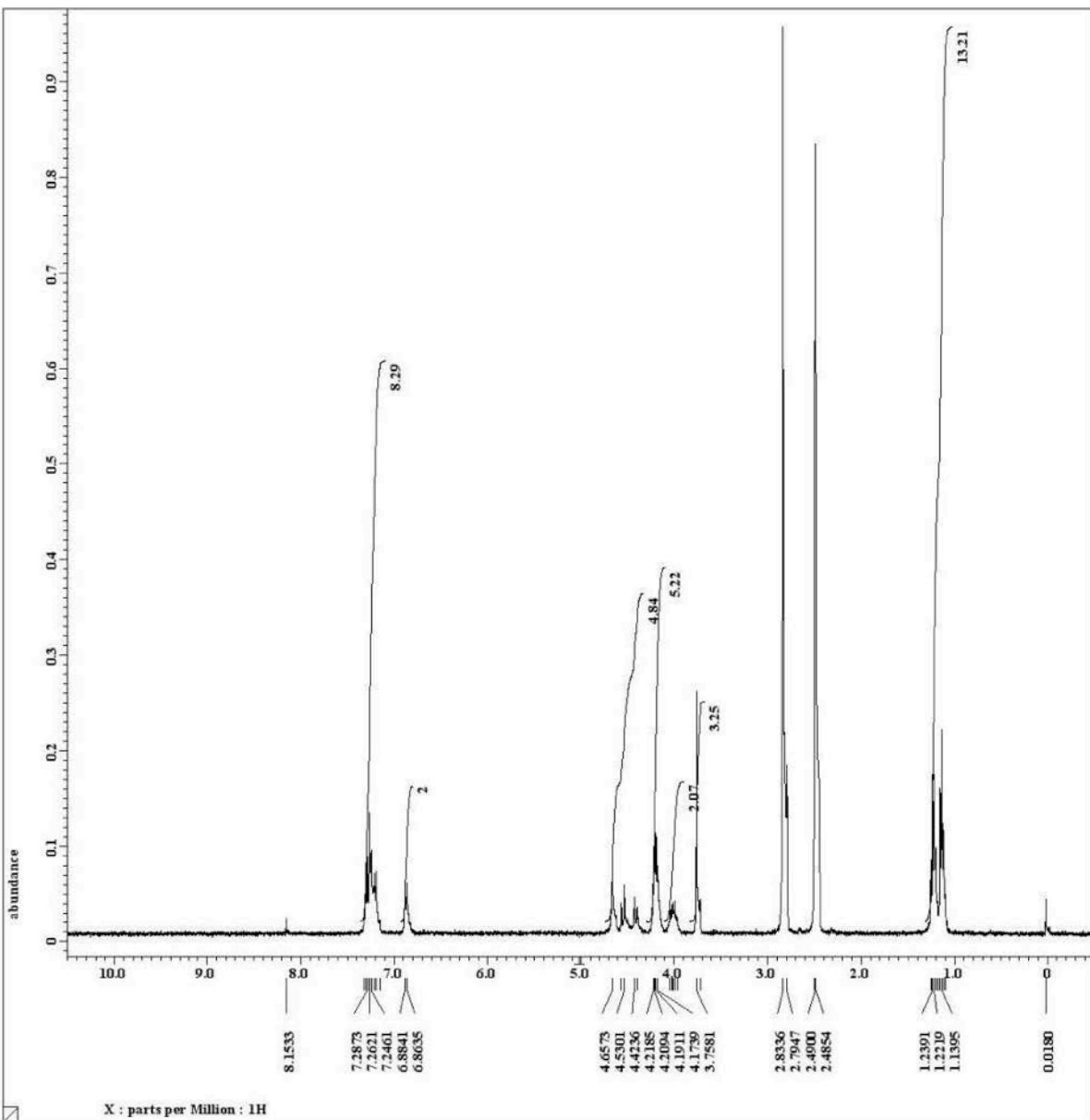
Comment      = single pulse decouple
Data format  = 1D COMPLEX
Dim_size     = 26214
Dim_title    = 13C
Dim_units    = [ppm]
Dimensions   = X
Site         = ECX 400P
Spectrometer = DELTA2_HMR

Field strength = 9.389766 [T] (400 [MHz])
X_acq_duration = 1.04333312 [s]
X_domain      = 13C
X_freq        = 100.52530333 [MHz]
X_offset      = 100 [ppm]
X_points      = 32768
X_prescans    = 4
X_resolution  = 0.95846665 [Hz]
X_sweep       = 31.40703518 [kHz]
Irr_domain    = 1H
Irr_freq      = 399.78219838 [MHz]
Irr_offset    = 5 [ppm]
Clipped       = FALSE
Mod_return    = 1
Scans         = 87
Total_scans   = 87

X_90_width   = 10.2 [us]
X_acq_time    = 1.04333312 [s]
X_angle       = 30 [deg]
X_atn         = 3.8 [dB]
X_pulse       = 3.4 [us]
Irr_atn_dec   = 20.8 [dB]
Irr_atn_noe   = 20.8 [dB]
Irr_noise     = WALTZ
Decoupling    = TRUE
Initial_wait  = 1 [s]
Noe           = TRUE
Noe_time      = 2 [s]
Recvr_gain    = 58
Relaxation_delay = 2 [s]
Repetition_time = 3.04333312 [s]
Temp_get      = 19.3 [dc]

```





```

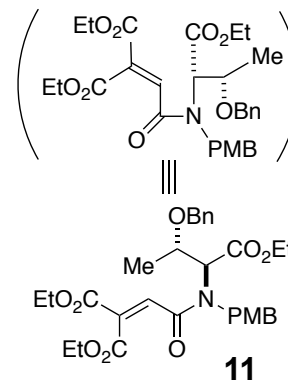
Filename      = RH684-DMS0d6-7.jdf
Author       = delta
Experiment   = single_pulse.ex2
Sample id    = SM670851
Solvent      = DMSO-d6
Creation time = 13-MAR-2013 11:13:52
Revision time = 21-OCT-2014 16:32:02
Current time  = 21-OCT-2014 16:32:09

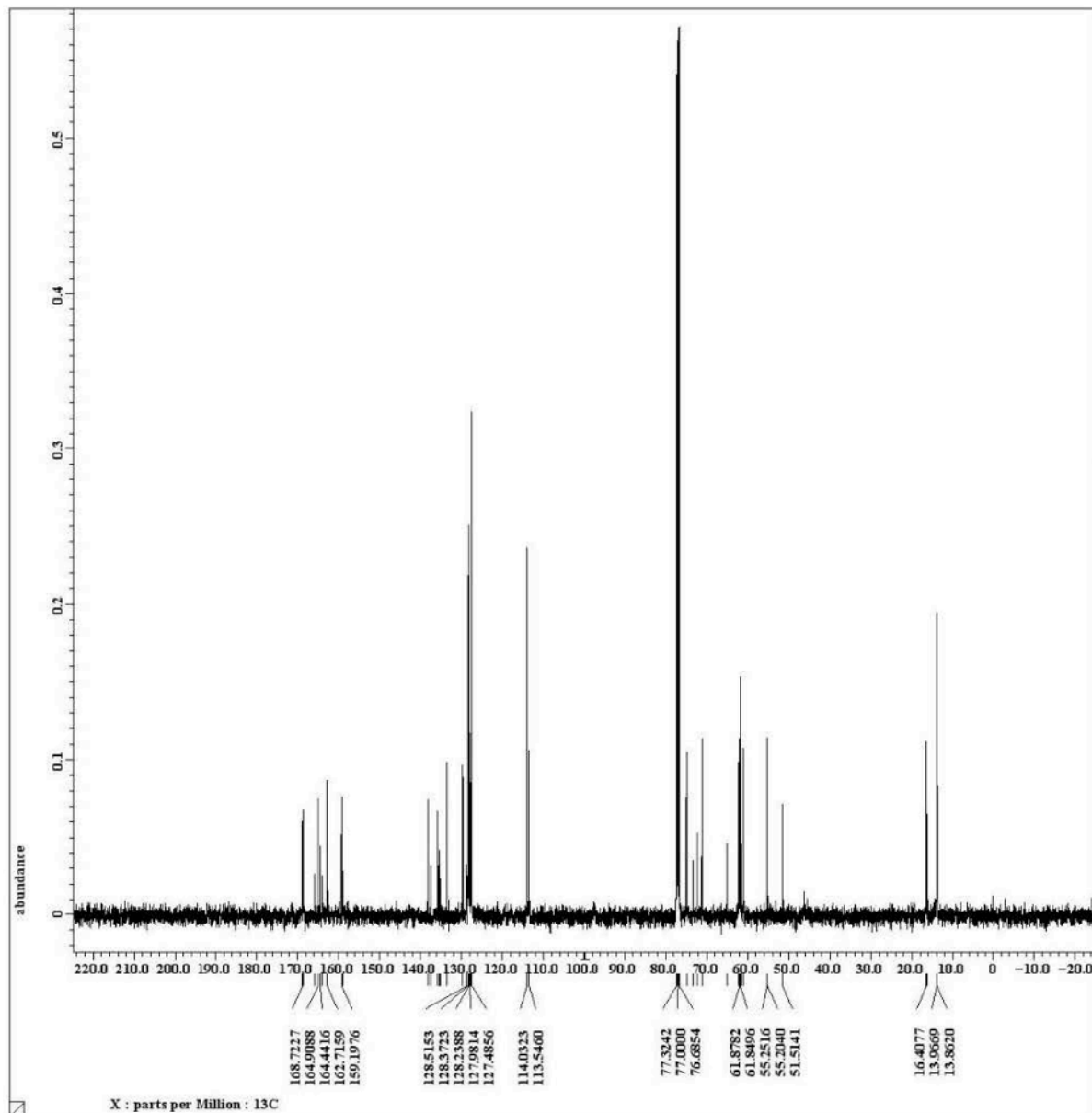
Comment      = single_pulse
Data format  = 1D COMPLEX
Dim size     = 13107
Dim title    = 1H
Dim units    = [ppm]
Dimensions   = X
Site         = ECX 400P
Spectrometer = DELTA2_HMR

Field strength = 9.389766[T] (400[MHz])
X_acq_duration = 2.18365952[s]
X_domain       = 1H
X_freq         = 399.78219838[MHz]
X_offset       = 5[ppm]
X_points       = 16384
X_prescans     = 1
X_resolution   = 0.45794685[Hz]
X_sweep        = 7.5030012[kHz]
Irr_domain    = 1H
Irr_freq       = 399.78219838[MHz]
Irr_offset     = 5[ppm]
Tri_domain     = 1H
Tri_freq       = 399.78219838[MHz]
Tri_offset     = 5[ppm]
Clipped        = FALSE
Mod_return     = 1
Scans          = 16
Total_scans    = 16

X_90_width    = 10.75[us]
X_acq_time     = 2.18365952[s]
X_angle        = 45[deg]
X_atn          = 0.3[dB]
X_pulse        = 5.375[us]
Irr_mode       = off
Tri_mode       = off
Dante_presat   = FALSE
Initial_wait   = 1[s]
Recvx_gain     = 52
Relaxation_delay = 5[s]
Repetition_time = 7.18365952[s]
Temp_get       = 130[dc]

```





```

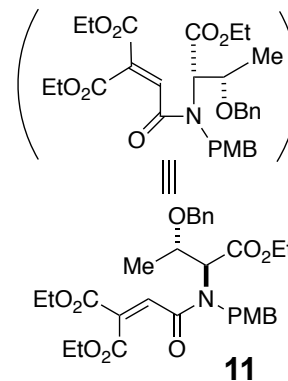
Filename      = RH684-13C-4.jdf
Author       = delta
Experiment   = single_pulse_dec
Sample id    = a
Solvent      = CHLOROFORM-D
Creation time = 27-FEB-2013 06:20:42
Revision time = 21-OCT-2014 16:33:31
Current time  = 21-OCT-2014 16:33:40

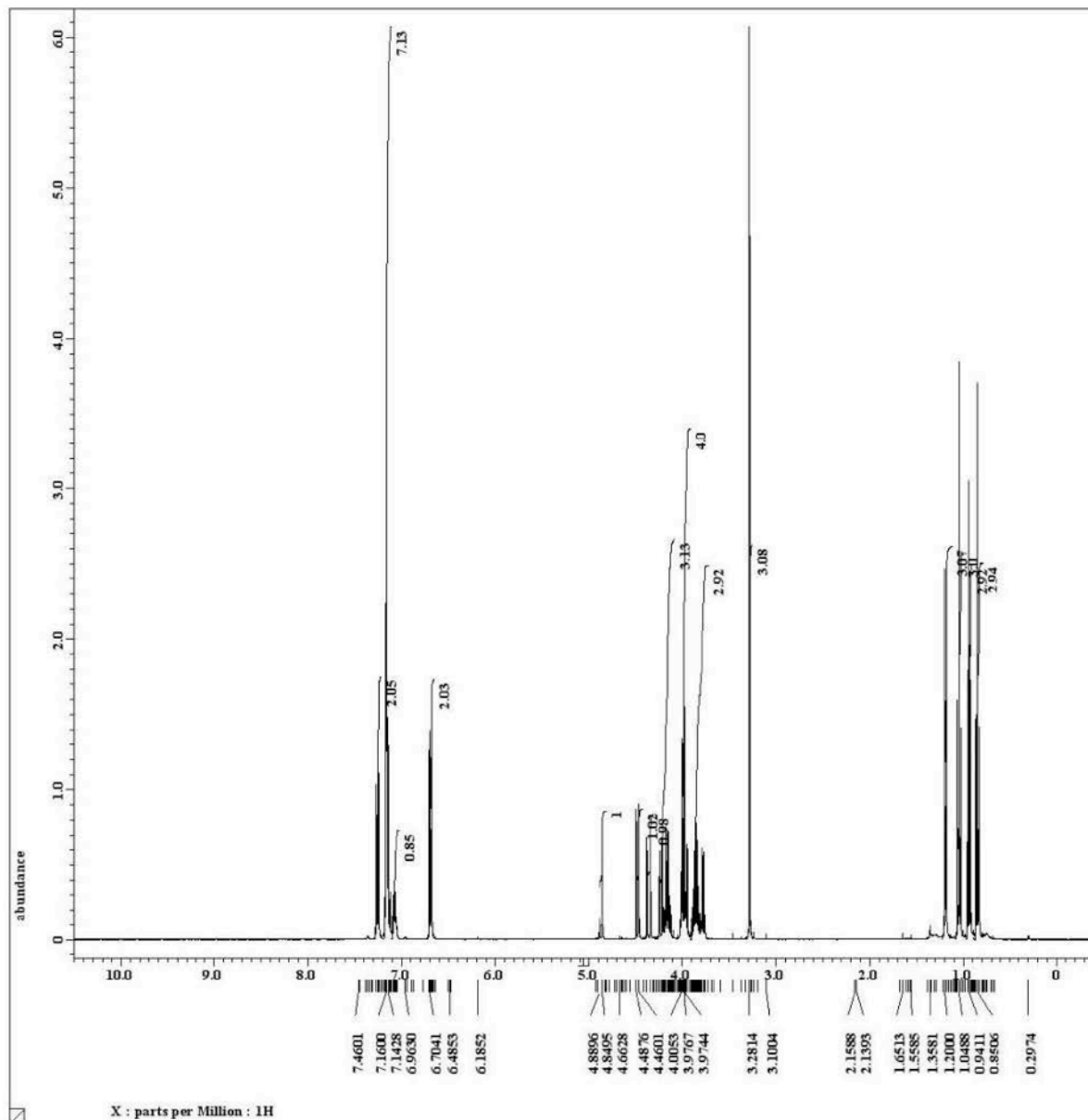
Comment      = single pulse decouple
Data format  = 1D COMPLEX
Dim size     = 26214
Dim title    = 13C
Dim units    = [ppm]
Dimensions   = X
Site         = ECX 400P
Spectrometer = DELTA2_HMR

Field strength = 9.389766[T] (400[MHz])
X_acq_duration = 1.04333312[s]
X_domain       = 13C
X_freq         = 100.52530333[MHz]
X_offset       = 100[ppm]
X_points       = 32768
X_prescans     = 4
X_resolution   = 0.95846665[Hz]
X_sweep        = 31.40703518[kHz]
Irr_domain     = 1H
Irr_freq       = 399.78219838[MHz]
Irr_offset     = 5[ppm]
clipped        = FALSE
Mod return     = 1
Scans          = 201.0
Total_scans    = 201.0

X_90_width     = 10.2[us]
X_acq_time     = 1.04333312[s]
X_angle        = 30[deg]
X_atn          = 3.8[dB]
X_pulse        = 3.4[us]
Irr_atn_dec    = 20.8[dB]
Irr_atn_noe    = 20.8[dB]
Irr_noise      = WALTZ
Decoupling     = TRUE
Initial_wait   = 1[s]
Noc            = TRUE
Noc time       = 2[s]
Recvx_gain     = 54
Relaxation_delay = 2[s]
Repetition_time = 3.04333312[s]
Temp_get       = 18.2[dc]

```





```

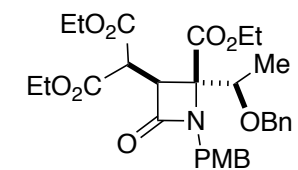
Filename      = RH634-PTLC2-benzene-5
Author        = delta
Experiment    = single_pulse.ex2
Sample id     = S837321
Solvent       = BENZENE-D6
Creation time  = 20-NOV-2012 03:10:17
Revision time = 21-OCT-2014 19:14:21
Current time  = 21-OCT-2014 19:14:41

Comment       = single_pulse
Data format   = 1D COMPLEX
Dim size      = 13107
Dim title     = 1H
Dim units     = [ppm]
Dimensions    = X
Site          = ECX 400P
Spectrometer  = DELTA2_HMR

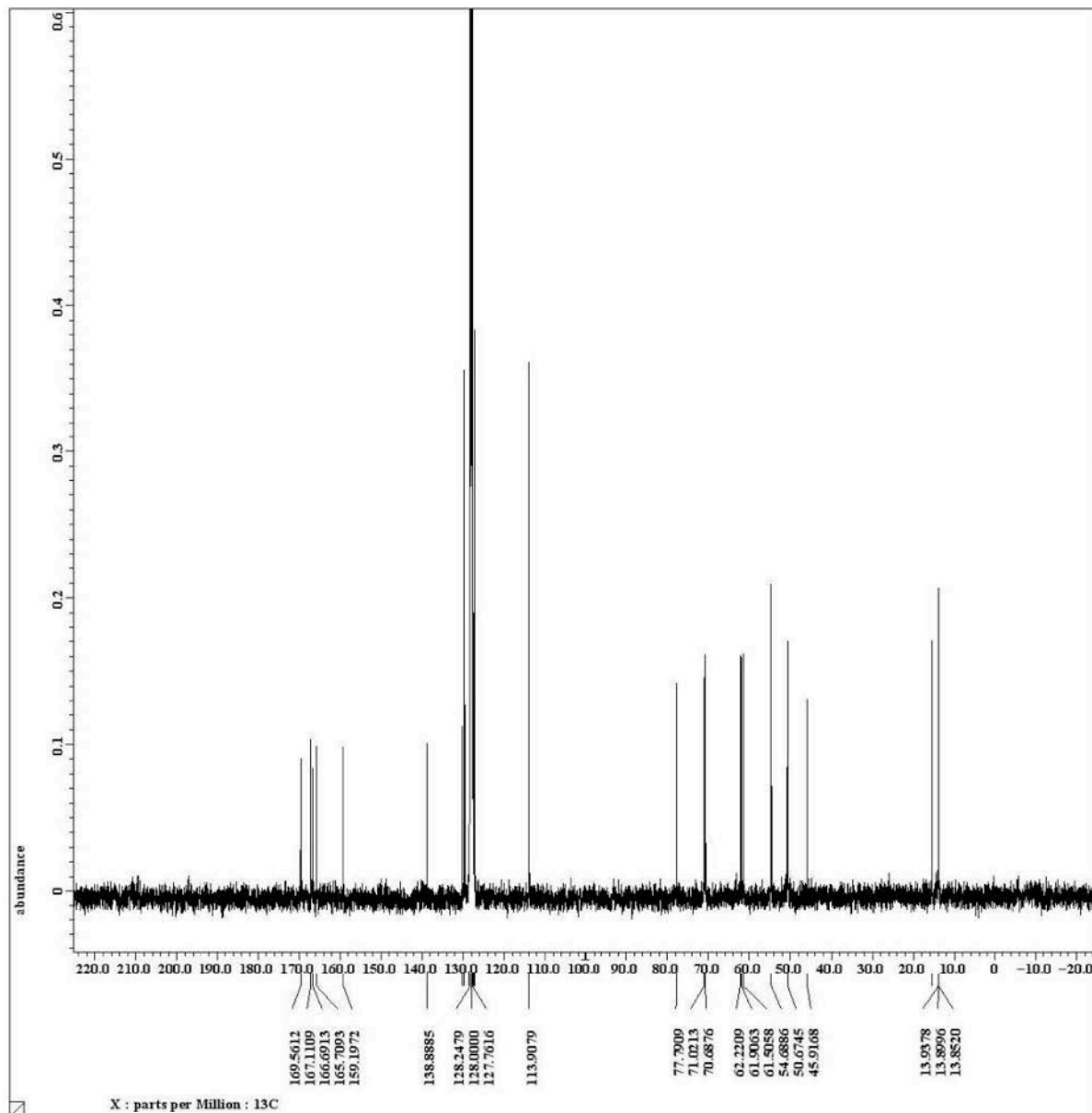
Field strength = 9.389766[T] (400[MHz])
X_acq_duration = 2.18365952[s]
X_domain       = 1H
X_freq         = 399.78219838[MHz]
X_offset       = 5[ppm]
X_points       = 16384
X_prescans     = 1
X_resolution   = 0.45794685[Hz]
X_sweep        = 7.5030012[kHz]
Irx_domain     = 1H
Irx_freq       = 399.78219838[MHz]
Irx_offset     = 5[ppm]
Tri_domain     = 1H
Tri_freq       = 399.78219838[MHz]
Tri_offset     = 5[ppm]
Clipped        = FALSE
Mod return     = 1
Scans          = 8
Total_scans    = 8

X_90_width    = 10.75[us]
X_acq_time     = 2.18365952[s]
X_angle        = 45[deg]
X_atn          = 0.3[dB]
X_pulse        = 5.375[us]
Irx_mode       = off
Tri_mode       = off
Dante presat   = FALSE
Initial wait   = 1[s]
Recvr_gain     = 32
Relaxation delay = 5[s]
Repetition_time = 7.18365952[s]
Temp_get       = 17.8[dc]

```



15 (in C₆D₆)



```

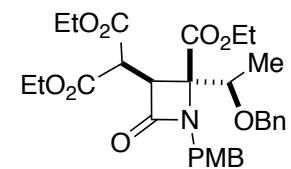
Filename      = RH634-PTLC2-13c-benze
Author       = delta
Experiment   = single_pulse_dec
Sample id    = S8376164
Solvent      = BENZENE-D6
Creation time = 20-OCT-2012 03:24:35
Revision time = 21-OCT-2014 19:15:53
Current time  = 21-OCT-2014 19:15:59

Comment      = single pulse decouple
Data format  = 1D COMPLEX
Dim size     = 26214
Dim title    = 13C
Dim units    = [ppm]
Dimensions   = X
Site         = ECX 400P
Spectrometer = DELTA2_HMR

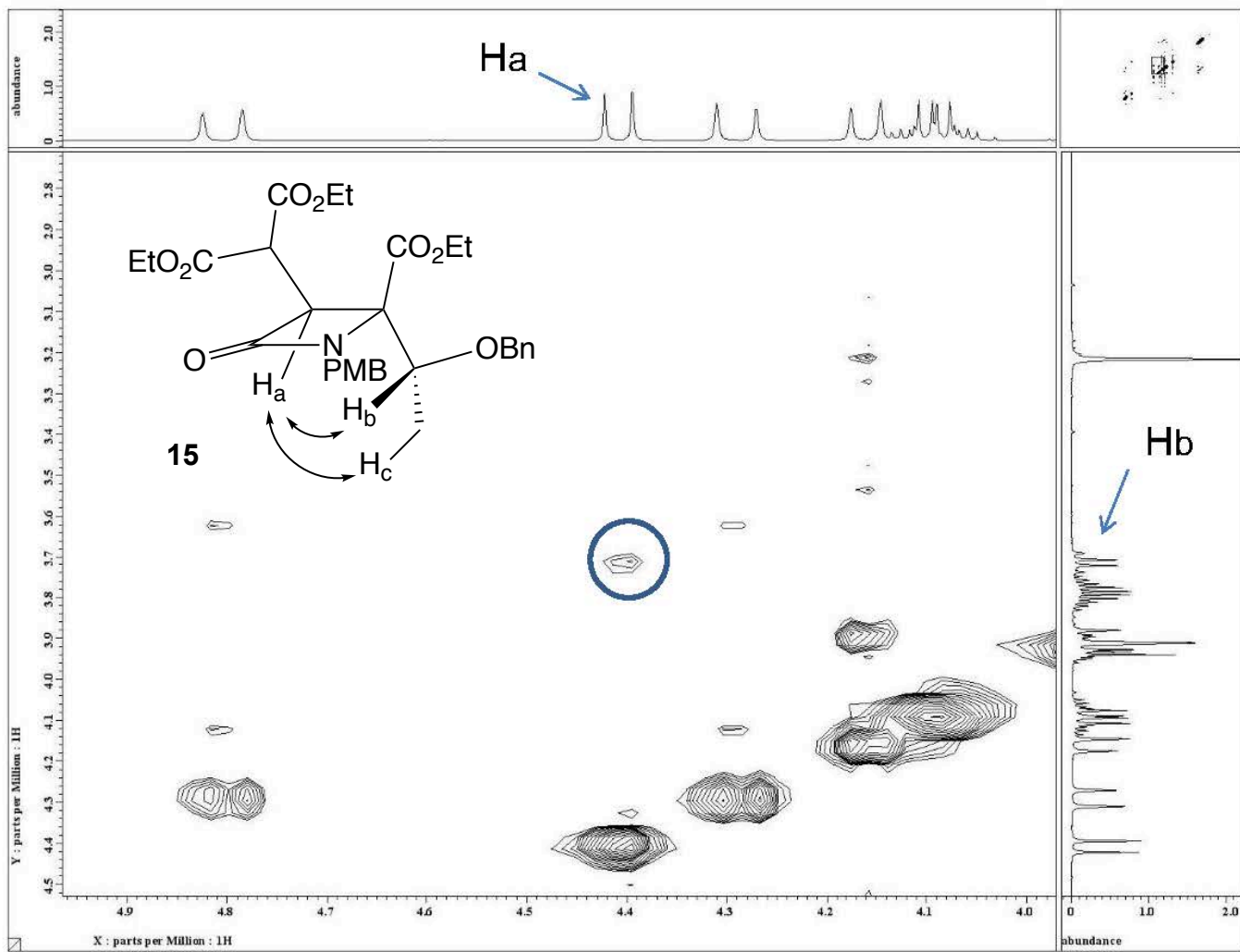
Field strength = 9.389766 [T] (400 [MHz])
X_acq_duration = 1.04333312 [s]
X_domain      = 13C
X_freq        = 100.52530333 [MHz]
X_offset      = 100 [ppm]
X_points      = 32768
X_prescans    = 4
X_resolution  = 0.95846665 [Hz]
X_sweep       = 31.40703518 [kHz]
Irx_domain    = 1H
Irx_freq      = 399.78219838 [MHz]
Irx_offset    = 5 [ppm]
clipped       = FALSE
Mod return    = 1
Scans         = 200
Total_scans   = 200

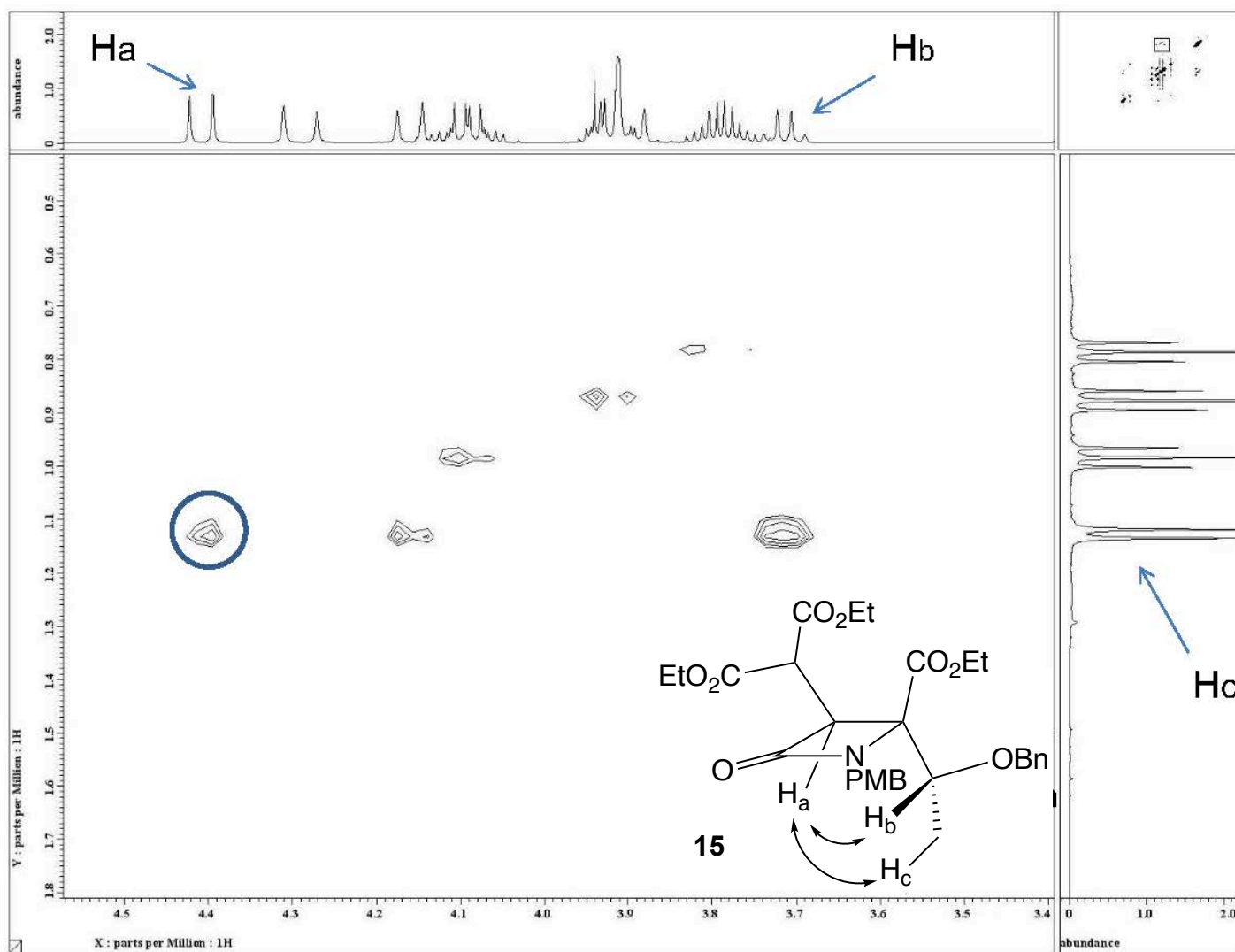
X_90_width    = 10.2 [us]
X_acq_time    = 1.04333312 [s]
X_angle       = 30 [deg]
X_atn         = 3.8 [dB]
X_pulse       = 3.4 [us]
Irx_atn_dec   = 20.8 [dB]
Irx_atn_noe   = 20.8 [dB]
Irx_noise     = WALTZ
Decoupling    = TRUE
Initial_wait  = 1 [s]
Noc           = TRUE
Noc_time      = 2 [s]
Recvx_gain    = 58
Relaxation_delay = 2 [s]
Repetition_time = 3.04333312 [s]
Temp_get      = 18.2 [dC]

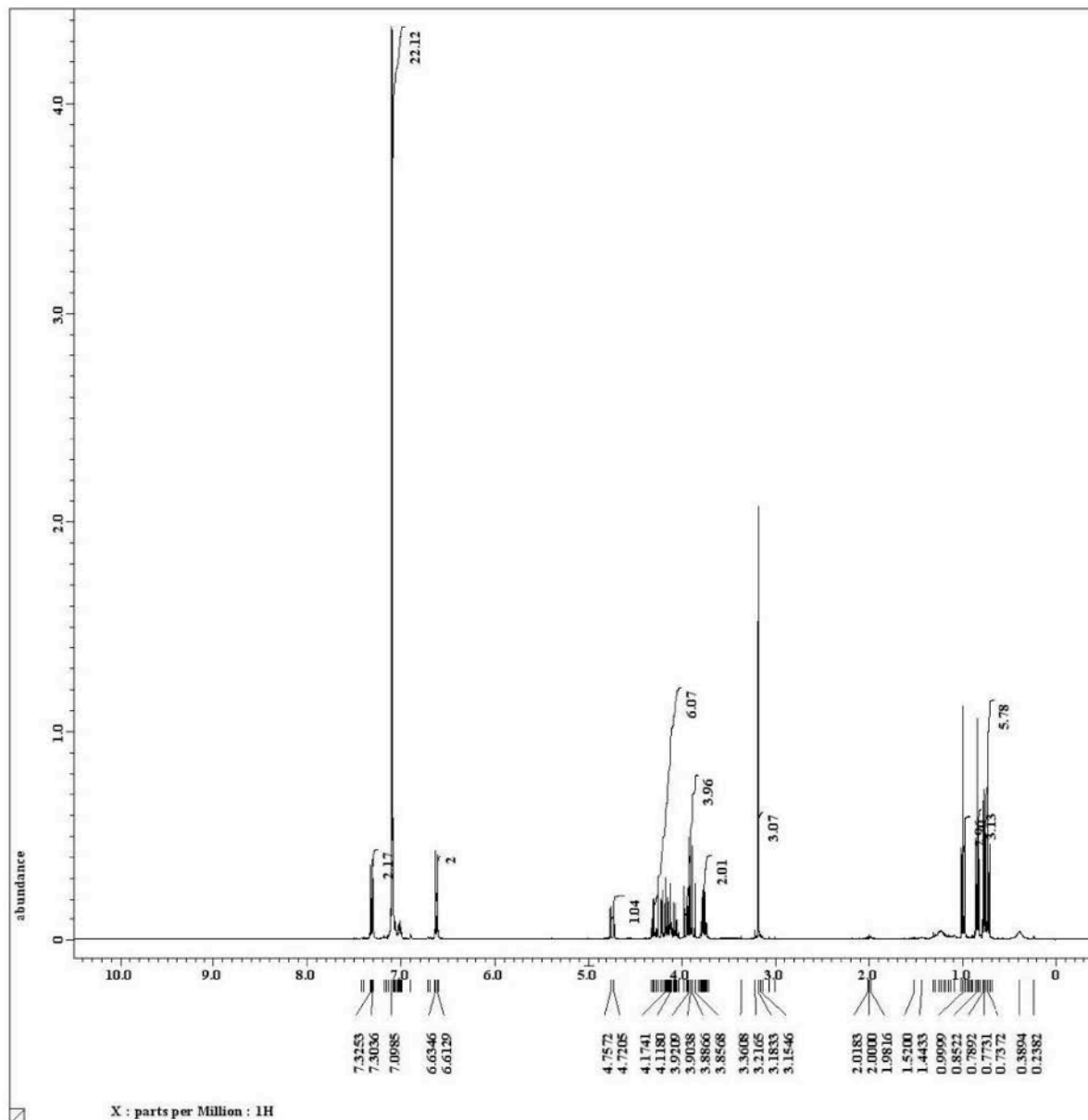
```



15







```

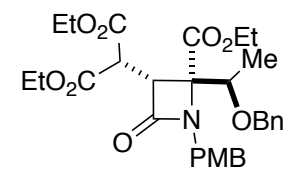
Filename      = RH634-PTLC1-benzene-3
Author        = delta
Experiment    = single_pulse.ex2
Sample id     = S8369213
Solvent       = BENZENE-d6
Creation time  = 24-NOV-2012 03:02:37
Revision time = 21-OCT-2014 19:11:49
Current time  = 21-OCT-2014 19:11:53

Comment       = single_pulse
Data format   = 1D COMPLEX
Dim size      = 13107
Dim title     = 1H
Dim units     = [ppm]
Dimensions    = X
Site          = ECX 400P
Spectrometer  = DELTA2_HMR

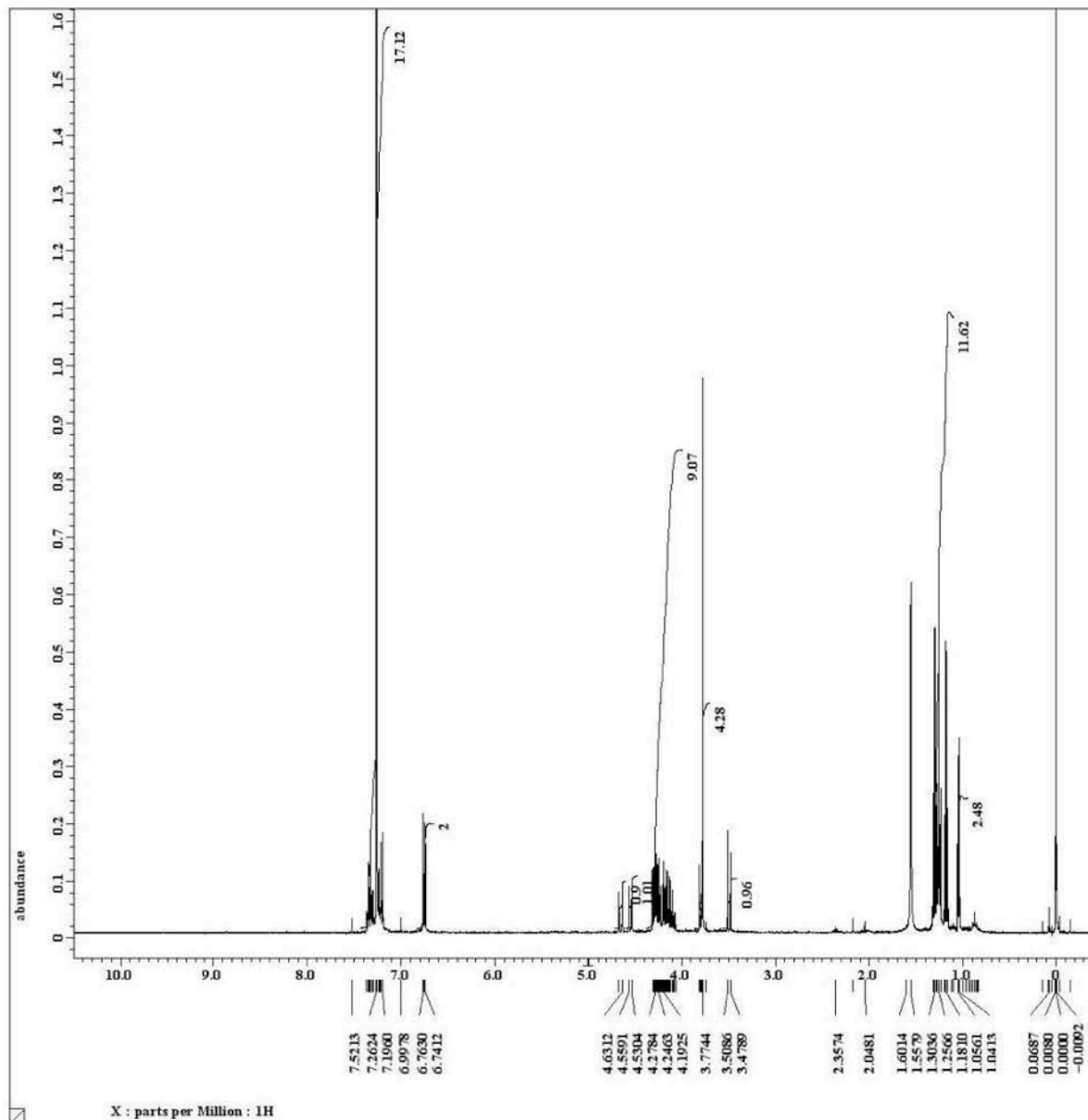
Field strength = 9.389766[T] (400[MHz])
X_acq_duration = 2.18365952[s]
X_domain       = 1H
X_freq         = 399.78219838[MHz]
X_offset       = 5[ppm]
X_points       = 16384
X_prescans     = 1
X_resolution   = 0.45794685[MHz]
X_sweep        = 7.5030012[kHz]
Irr_domain     = 1H
Irr_freq       = 399.78219838[MHz]
Irr_offset     = 5[ppm]
Tri_domain     = 1H
Tri_freq       = 399.78219838[MHz]
Tri_offset     = 5[ppm]
Clipped        = FALSE
Mod_return     = 1
Scans          = 8
Total_scans    = 8

X_90_width    = 10.75[us]
X_acq_time     = 2.18365952[s]
X_angle        = 45[deg]
X_atn          = 0.3[dB]
X_pulse        = 5.375[us]
Irr_mode       = off
Tri_mode       = off
Dante_presat   = FALSE
Initial_wait   = 1[s]
Recvx_gain     = 38
Relaxation_delay = 5[s]
Repetition_time = 7.18365952[s]
Temp_get       = 17.9[dc]

```



16 (in C₆D₆)



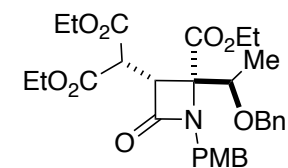
```

Filename      = RH689-PTLC1-3.jdf
Author       = delta
Experiment   = single_pulse.ex2
Sample id    = 58780219
Solvent      = CHLOROFORM-D
Creation time = 11-JAN-2013 14:22:36
Revision time = 21-OCT-2014 19:31:39
Current time  = 21-OCT-2014 19:31:45

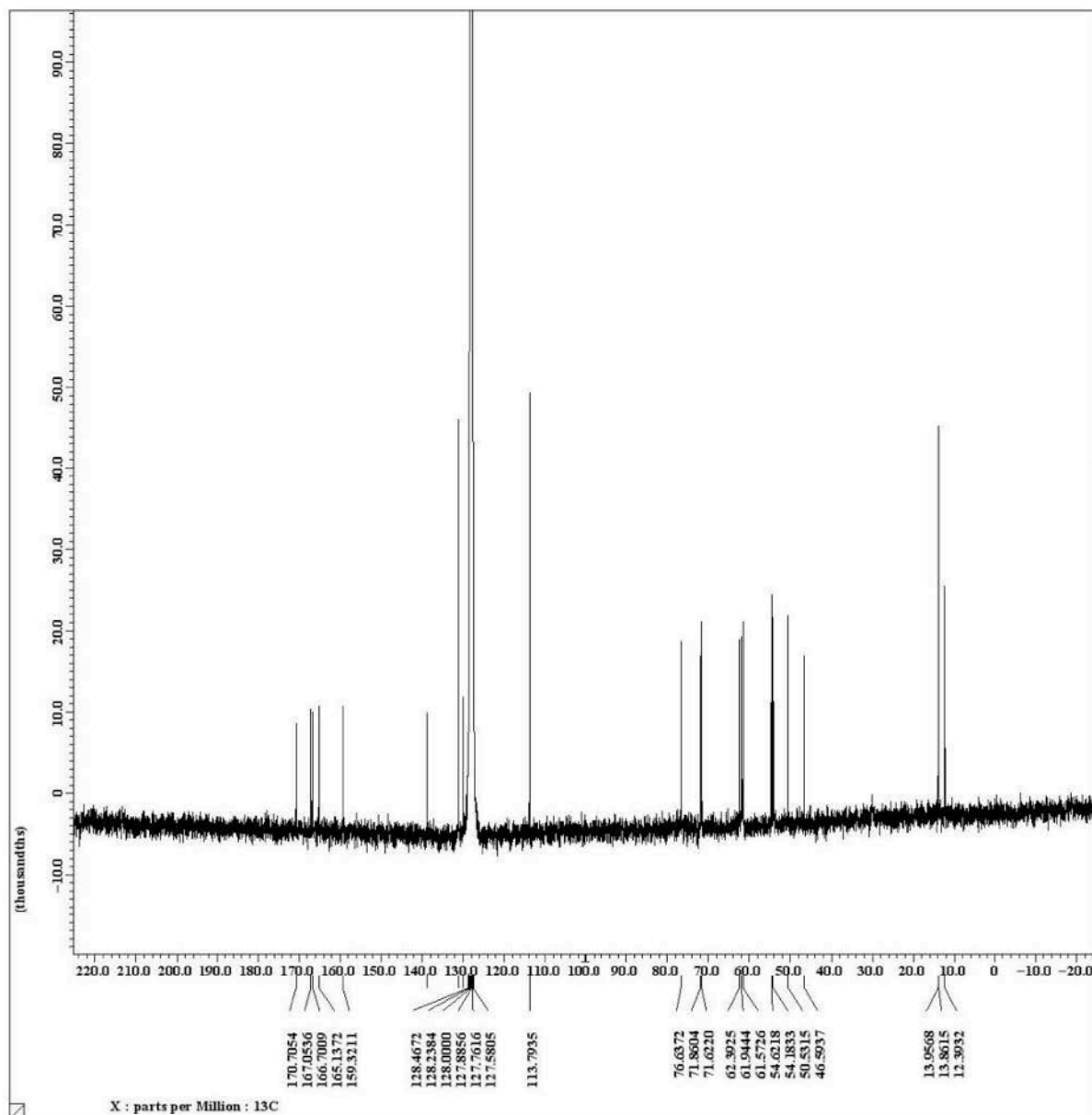
Comment      = single_pulse
Data format  = 1D COMPLEX
Dim size     = 13107
Dim title    = 1H
Dim units    = [ppm]
Dimensions   = X
Site         = ECX 400P
Spectrometer = DELTA2_HMR

Field strength = 9.389766[T] (400[MHz])
X_acq_duration = 2.18365952[s]
X_domain      = 1H
X_freq        = 399.78219838[MHz]
X_offset      = 5[ppm]
X_points      = 16384
X_prescans    = 1
X_resolution  = 0.45794685[Hz]
X_sweep       = 7.5030012[kHz]
Irx_domain   = 1H
Irx_freq      = 399.78219838[MHz]
Irx_offset    = 5[ppm]
Tri_domain    = 1H
Tri_freq      = 399.78219838[MHz]
Tri_offset    = 5[ppm]
Clipped      = FALSE
Mod return    = 1
Scans        = 16
Total_scans   = 16

X_90_width   = 10.75[us]
X_acq_time    = 2.18365952[s]
X_angle      = 45[deg]
X_atn        = 0.3[dB]
X_pulse      = 5.375[us]
Irx_mode     = off
Tri_mode     = off
Dante_preset = FALSE
Initial_wait  = 1[s]
Recvx_gain   = 42
Relaxation_delay = 5[s]
Repetition_time = 7.18365952[s]
Temp_get     = 19.3[dc]
  
```



16 (in CDCl₃)



```

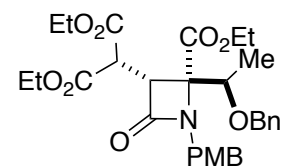
Filename      = RH634-PTLC1-benzene-1
Author       = delta
Experiment   = single_pulse_dec
Sample id    = S831643
Solvent      = BENZENE-D6
Creation time = 25-NOV-2012 23:45:21
Revision time = 21-OCT-2014 19:13:26
Current time  = 21-OCT-2014 19:13:32

Comment      = single pulse decouple
Data format  = 1D COMPLEX
Dim size     = 26214
Dim title    = 13C
Dim units    = [ppm]
Dimensions   = X
Site         = ECX 400P
Spectrometer = DELTA2_HMR

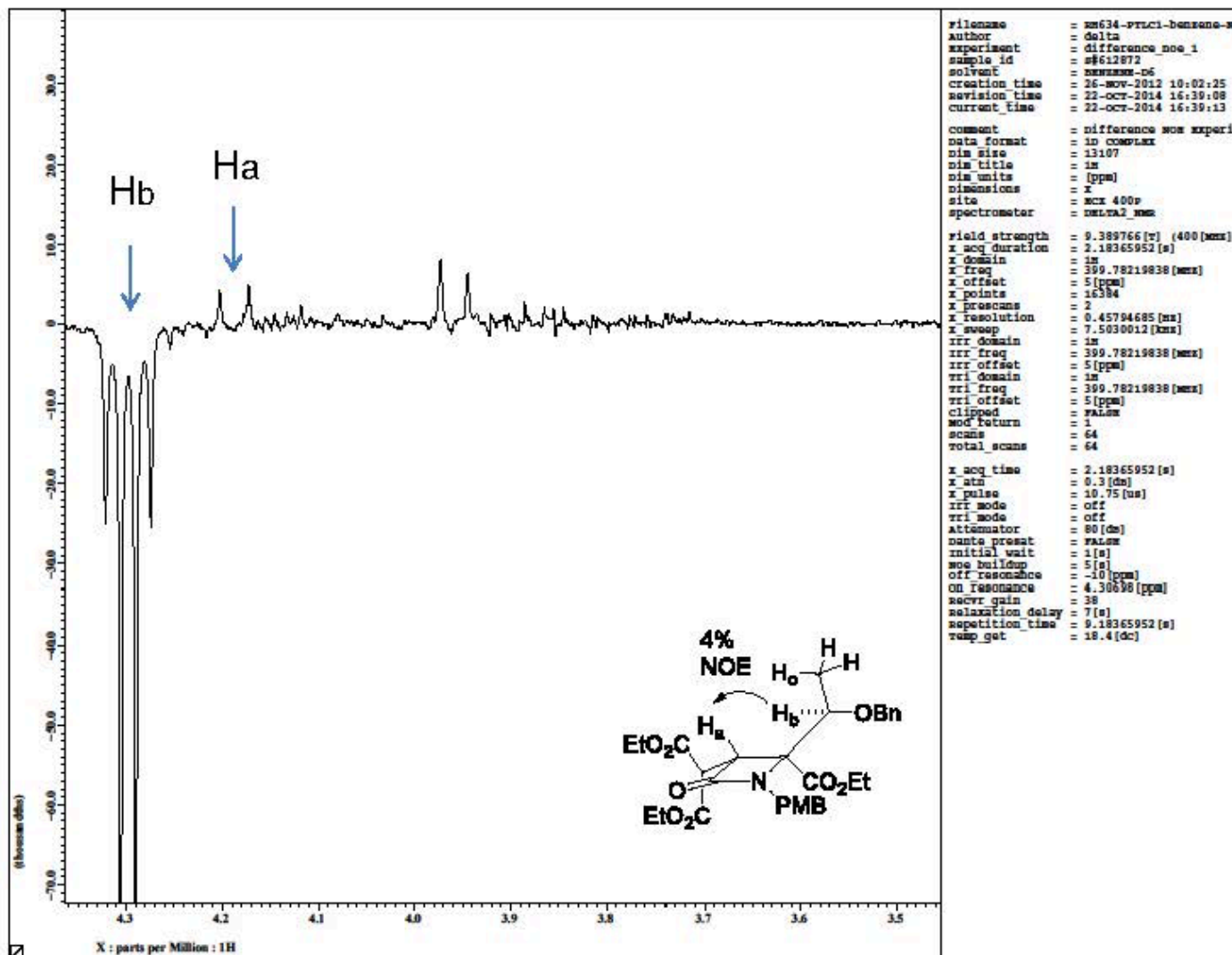
Field strength = 9.389766[T] (400[MHz])
X_acq_duration = 1.04333312[s]
X_domain      = 13C
X_freq       = 100.52530333[MHz]
X_offset     = 100[ppm]
X_points     = 32768
X_prescans   = 4
X_resolution = 0.95846665[Hz]
X_sweep      = 31.40703518[kHz]
Irr_domain   = 1H
Irr_freq     = 399.78219838[MHz]
Irr_offset   = 5[ppm]
clipped      = FALSE
Mod return   = 1
Scans        = 7200
Total_scans  = 7200

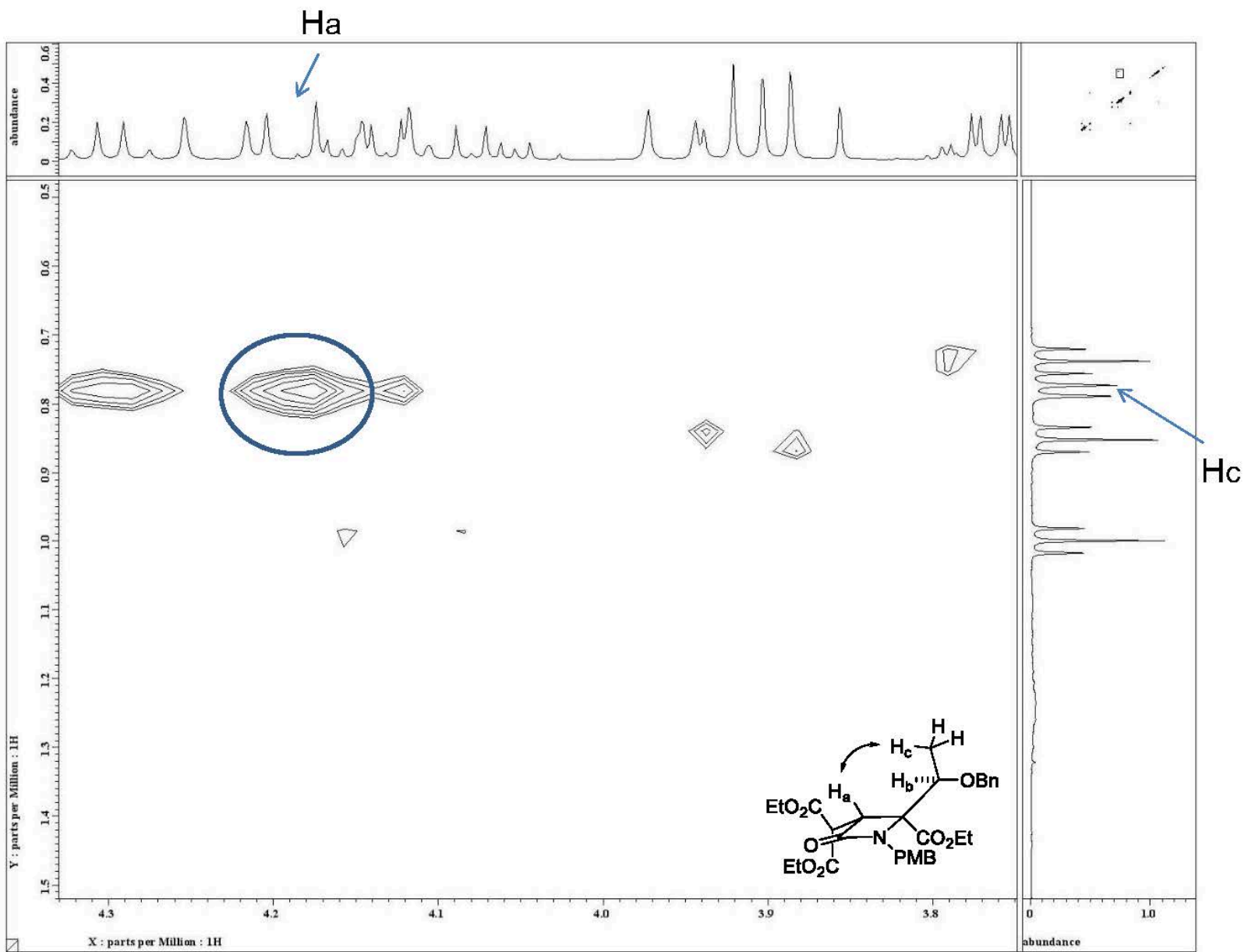
X_90_width   = 10.2[us]
X_acq_time   = 1.04333312[s]
X_angle      = 30[deg]
X_atn        = 3.8[dB]
X_pulse      = 3.4[us]
Irr_atn_dec  = 20.8[dB]
Irr_atn_noe  = 20.8[dB]
Irr_noise    = WALTZ
Decoupling   = TRUE
Initial_wait = 1[s]
Noc          = TRUE
Noc time     = 2[s]
Recvx_gain   = 58
Relaxation_delay = 2[s]
Repetition_time = 3.04333312[s]
Temp_get     = 18.9[dc]

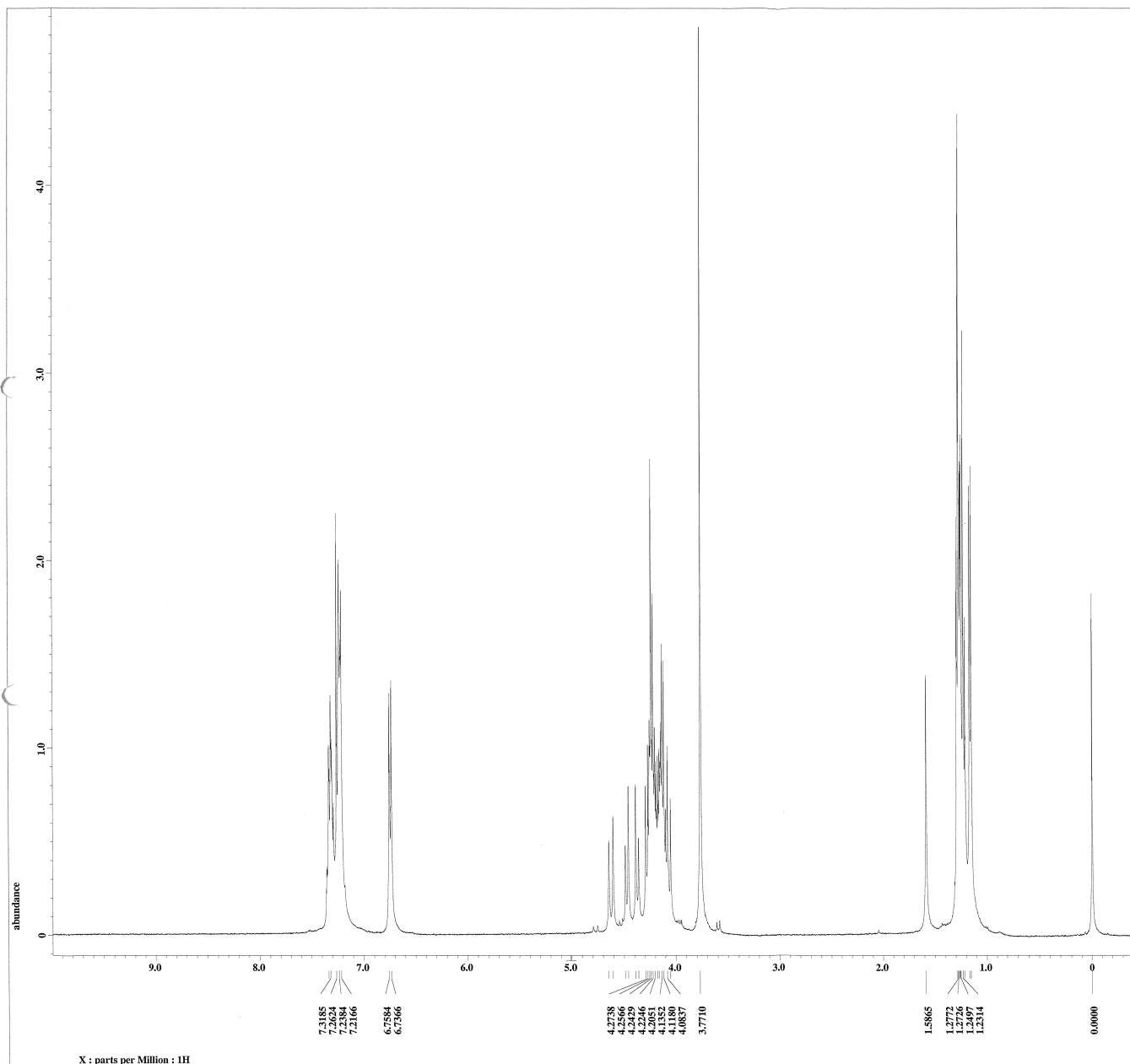
```



16







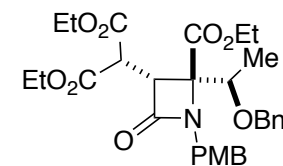
---- PROCESSING PARAMETERS ----
 dc_balance : 0 : FALSE
 sseep : 0.2 [Hz] : 0.0 [s]
 trapezoid3 : 0 [%] : 80 [%] : 100 [%]
 zerofill : 1
 fit : 3 : TRUE : TRUE
 machinephase
 ppm
 Derived from: 201031KM1822PLC3_recycle1a

Filename = 201031KM1822PLC3_recy
 Author = delta
 Experiment = single_pulse.ex2
 Sample_id = S8686639
 Solvent = CHLOROFORM-D
 Creation_time = 31-OCT-2020 07:24:57
 Revision_time = 31-OCT-2020 19:06:00
 Current_time = 31-OCT-2020 19:06:09

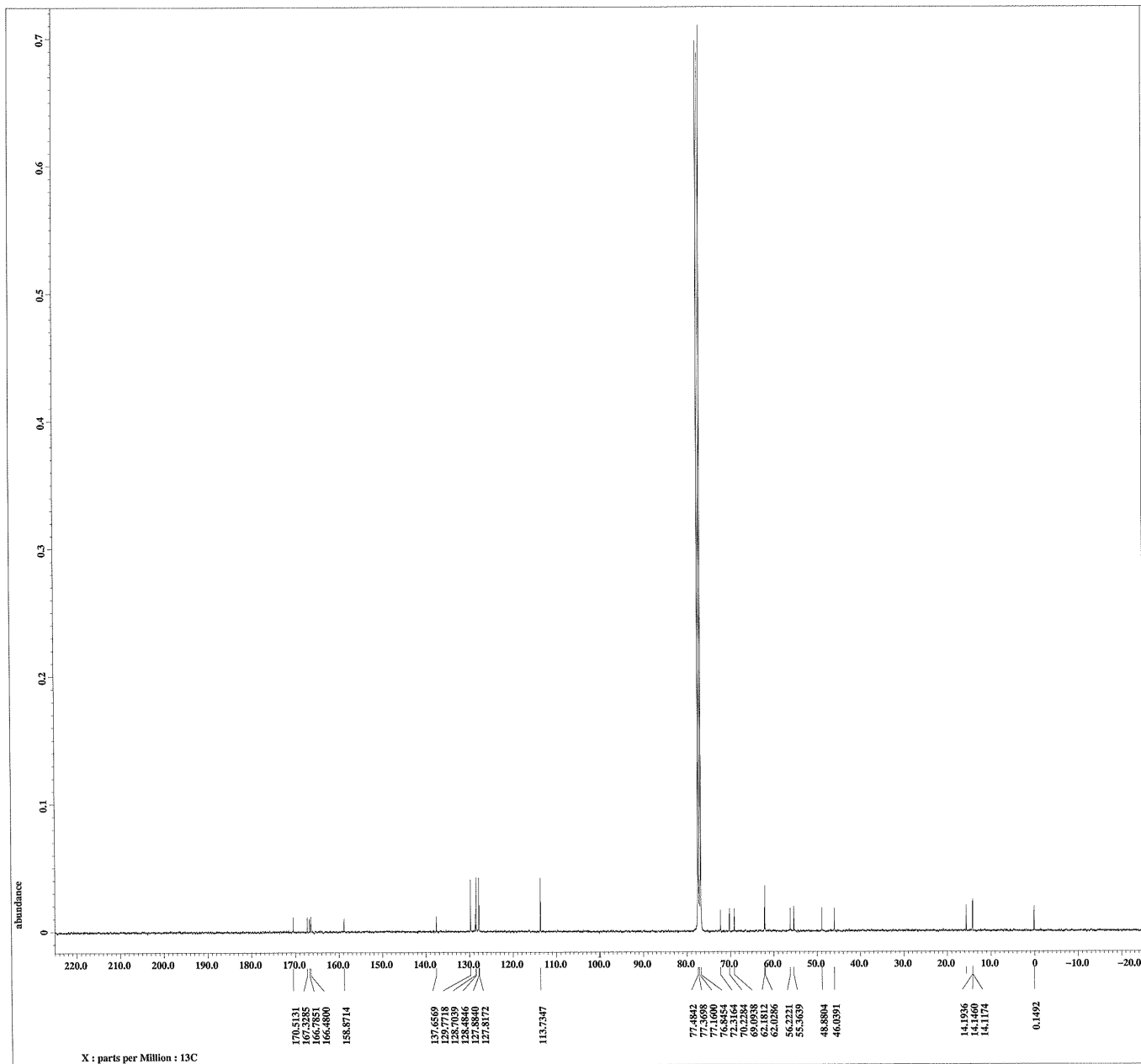
Content = single_pulse
 Data_format = 1D COMPLEX
 Dim_size = 13107
 Dim_title = 1H
 Dim_units = [ppm]
 Dimensions = X
 Site = ECK 400P
 Spectrometer = DELTA2_NMR

Field_strength = 9.389766 [T] (400 [MHz])
 X_acq_duration = 2.18365952 [s]
 X_domain = 1H
 X_freq = 399.78219838 [MHz]
 X_offset = 5 [ppm]
 X_points = 16384
 X_prescans = 1
 X_resolution = 0.45794685 [Hz]
 X_sweep = 7.5030012 [kHz]
 Irr_domain = 1H
 Irr_freq = 399.78219838 [MHz]
 Irr_offset = 5 [ppm]
 Tri_domain = 1H
 Tri_freq = 399.78219838 [MHz]
 Tri_offset = 5 [ppm]
 Clipped = TRUE
 Mod_return = 1
 Scans = 8
 Total_scans = 8

X_90_width = 11 [us]
 X_acq_time = 2.18365952 [s]
 X_angle = 45 [deg]
 X_atn = 0.3 [dB]
 X_pulse = 5.5 [us]
 Irr_mode = Off
 Tri_mode = Off
 Dante_preset = FALSE
 Initial_wait = 1 [s]
 Recvr_gain = 50
 Relaxation_delay = 5 [s]
 Repetition_time = 7.18365952 [s]
 Temp_get = 20.7 [dC]



17



---- PROCESSING PARAMETERS ----
 dc_balance : 0 : FALSE
 sweep : 2.0 [Hz] : 0.0 [s]
 trapezoid3 : 0 [%] : 80 [%] : 100 [%]
 zerofill : 1
 fit : 1 : TRUE : TRUE
 machinephase
 ppm

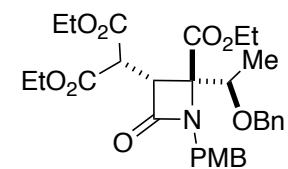
Derived from: RH977-trans-13C-1.jdf

Filename = RH977-trans-13C-3.jdf
 Author = delta
 Experiment = single_pulse_dec
 Sample_id = S#21725
 Solvent = CHLOROFORM-D
 Creation_time = 27-JAN-2016 00:55:29
 Revision_time = 8-JAN-2021 00:14:29
 Current_time = 8-JAN-2021 00:14:29

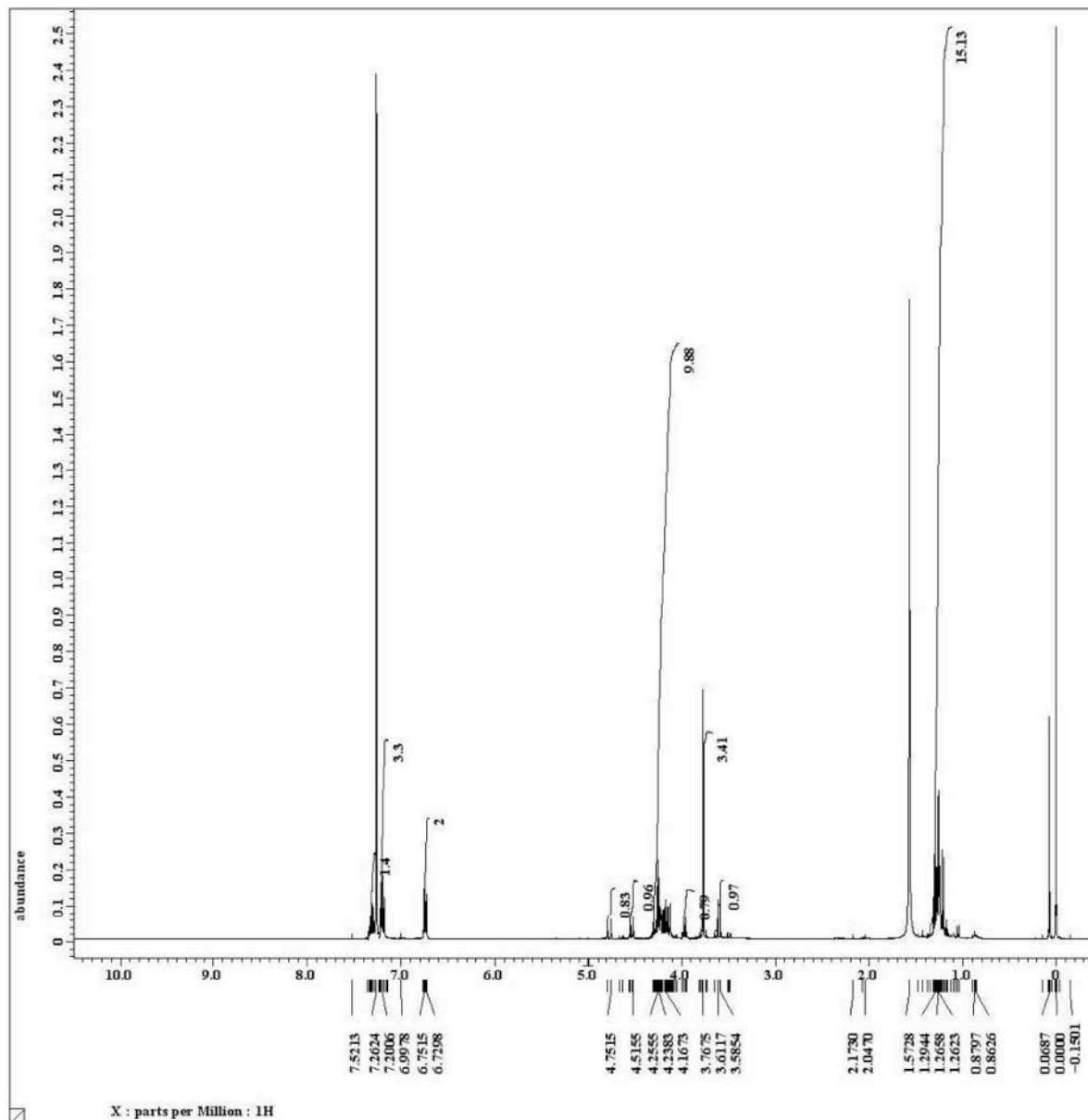
Content = single pulse decouple
 Data_format = 1D COMPLEX
 Dim_size = 26214
 Dim_title = 13C
 Dim_units = [ppm]
 Dimensions = X
 Site = EOX 400P
 Spectrometer = DELTA2_NMR

Field_strength = 9.389766 [T] (400 [MHz])
 X_acq_duration = 1.04333312 [s]
 X_domain = 13C
 X_freq = 100.52530333 [MHz]
 X_offset = 100 [ppm]
 X_points = 32768
 X_prescans = 4
 X_resolution = 0.95846665 [Hz]
 X_sweep = 31.40703518 [kHz]
 Irr_domain = 1H
 Irr_freq = 399.78219838 [MHz]
 Irr_offset = 5 [ppm]
 Clipped = FALSE
 Mod_return = 1
 Scans = 10500
 Total_scans = 10500

X_90_width = 10.54 [us]
 X_acq_time = 1.04333312 [s]
 X_angle = 30 [deg]
 X_atn = 3.8 [dB]
 X_pulse = 3.51333333 [us]
 Irr_atn_dec = 20.58 [dB]
 Irr_atn_noe = 20.58 [dB]
 Irr_nolse = NONE
 Decoupling = TRUE
 Initial_wait = 1 [s]
 Noe = TRUE
 Noe_time = 2 [s]
 Recvr_gain = 56
 Relaxation_delay = 2 [s]
 Repetition_time = 3.04333312 [s]
 Temp_get = 19.2 [dC]



17



```

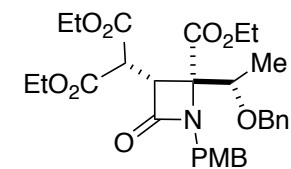
Filename      = RH685-PTLC2-20130725-
Author       = delta
Experiment   = single_pulse.ex2
Sample id    = S844924
Solvent      = CHLOROFORM-D
Creation time = 25-JUL-2013 17:46:13
Revision time = 21-OCT-2014 19:20:10
Current time  = 21-OCT-2014 19:20:16

Comment      = single_pulse
Data format  = 1D COMPLEX
Dim size     = 13107
Dim title    = 1H
Dim units    = [ppm]
Dimensions   = X
Site         = ECX 400P
Spectrometer = DELTA2_HMR

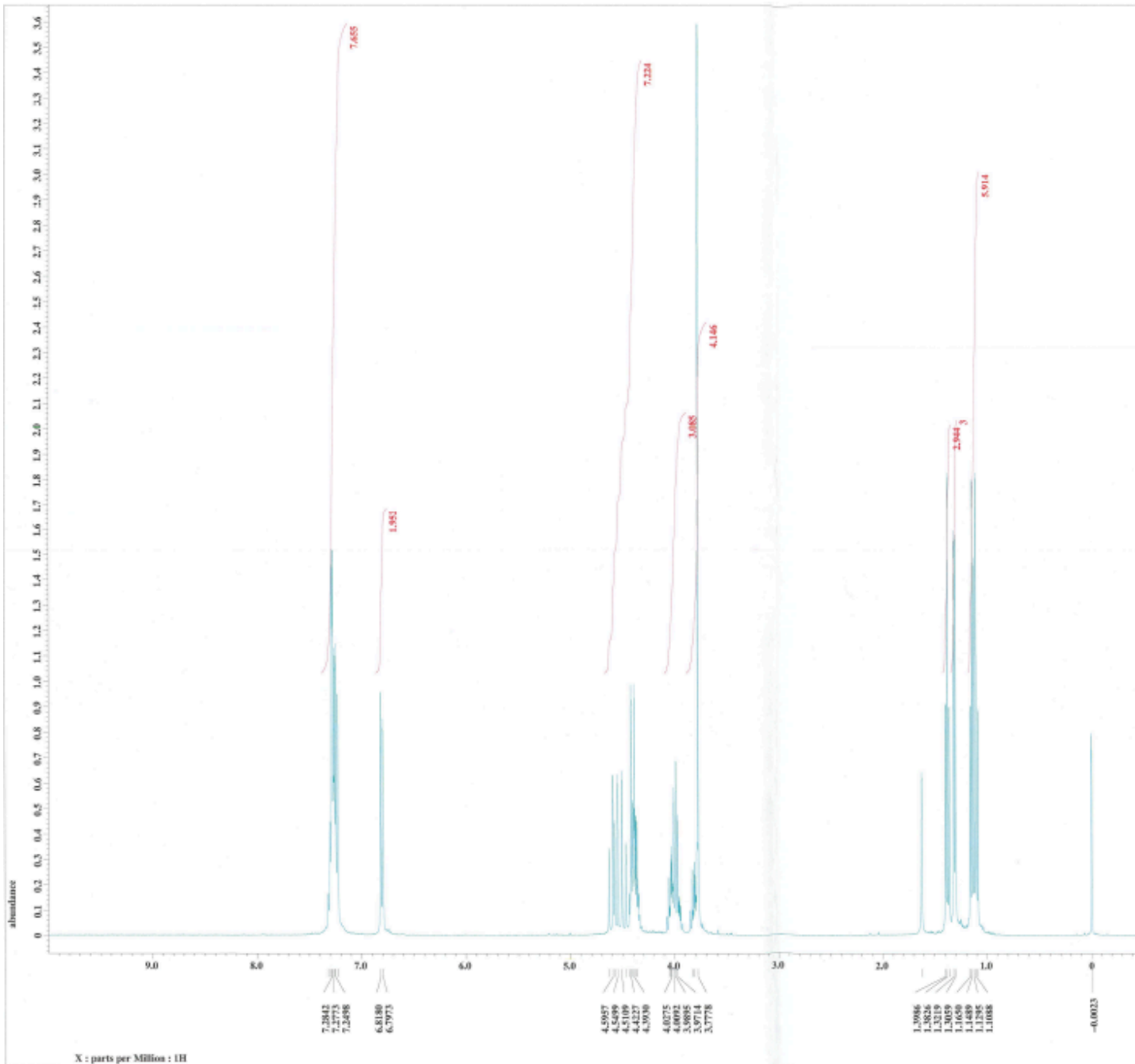
Field strength = 9.389766[T] (400 [MHz])
X_acq_duration = 2.18365952[s]
X_domain      = 1H
X_freq        = 399.78219838 [MHz]
X_offset      = 5 [ppm]
X_points      = 16384
X_prescans    = 1
X_resolution  = 0.45794685 [Hz]
X_sweep       = 7.5030012 [kHz]
Irx_domain   = 1H
Irx_freq      = 399.78219838 [MHz]
Irx_offset    = 5 [ppm]
Tri_domain    = 1H
Tri_freq      = 399.78219838 [MHz]
Tri_offset    = 5 [ppm]
Clipped      = FALSE
Mod_return    = 1
Scans        = 93
Total_scans   = 93

X_90_width   = 10.75 [us]
X_acq_time    = 2.18365952[s]
X_angle       = 45 [deg]
X_atn         = 0.3 [dB]
X_pulse       = 5.375 [us]
Irx_mode      = off
Tri_mode      = off
Dante_presat  = FALSE
Initial_wait  = 1 [s]
Recvx_gain    = 42
Relaxation_delay = 5 [s]
Repetition_time = 7.18365952[s]
Temp_get      = 22.1 [dC]

```



ent-15



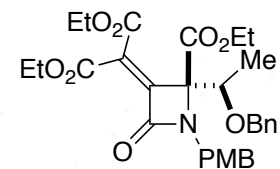
---- PROCESSING PARAMETERS ----
 dc_balance : 0 : FALSE
 sweep : 9.2[Hz] : 0.0[s]
 frequency03 : 9[M] : 80[M] : 160[M]
 zerofill : 1
 fft : 1 : TRUE : FWD
 machinephase
 ppm
 Derived from: 201109HM1837PLC2-1.5df

Filename = 201109HM1837PLC2-5.5d
 Author = delta
 Experiment = single_pulse.ex2
 Sample_id = 00638729
 Solvent = CHLOROFORM-D
 Creation_time = 9-NOV-2020 12:09:01
 Revision_time = 10-NOV-2020 10:31:06
 Current_time = 10-NOV-2020 10:31:08

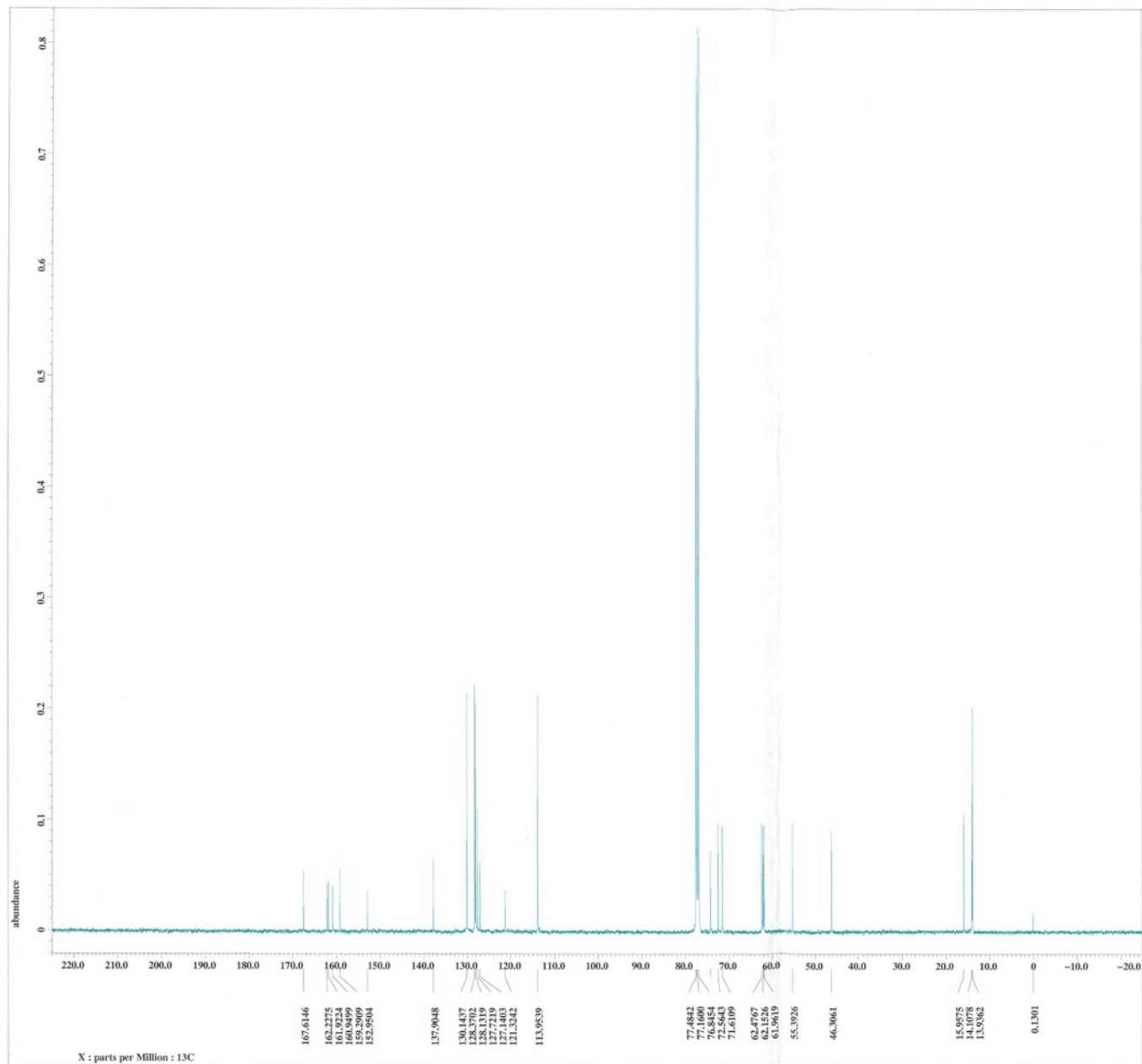
Content = single_pulse
 Data_format = 1D COMPLEX
 Dir_name = 13167
 Dir_title = 1H
 Dir_units = [ppm]
 Dimensions = X
 Site = ECK 400P
 Spectrometer = DELTA2_80R

Field_strength = 9.289766[T] (400[MHz])
 Acq_duration = 2.4615552[s]
 X_domain = 1H
 X_freq = 399.78219038[MHz]
 X_offset = 5[ppm]
 X_points = 16384
 X_pulses = 1
 X_resolution = 0.45794695[Hz]
 X_sweep = 7.5010012[kHz]
 Irr_domain = 1H
 Irr_freq = 399.78219038[MHz]
 Irr_offset = 5[ppm]
 Irr_domain = 1H
 Irr_freq = 399.78219038[MHz]
 Irr_offset = 5[ppm]
 Clipped = FALSE
 Mod_return = 1
 Scans = 8
 Total_scans = 8

X_90_width = 11[us]
 X_acq_time = 2.18349952[s]
 X_angle = 45[deg]
 X_atn = 0.3[dB]
 X_pulse = 5.5[us]
 Irr_mode = Off
 Tri_mode = Off
 Dante_preset = FALSE
 Initial_wait = 1[s]
 Nucvr_gain = 36
 Relaxation_delay = 5[s]
 Repetition_time = 7.18349952[s]
 Temp_get = 19.3[°C]



19



```

---- PROCESSING PARAMETERS ----
dc_balance : 0 : FALSE
sexp : 2.0[Hz] : 0.0[s]
trapezoid : 0[%] : 50[%] : 100[%]
zerofill : 1
fft : 1 : TRUE : TRUE
machinphase
ppm
Derived from: 201109KM1837PLC2_13C-1.jdf

```

```

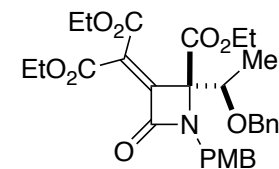
Filename      = 201109KM1837PLC2_13C-
Author       = delta
Experiment   = single_pulse_dec
Sample_id    = a
Solvent      = CHLOROFORM-D
Creation_time = 9-NOV-2020 16:09:30
Revision_time = 10-NOV-2020 10:28:41
Current_time = 10-NOV-2020 10:28:45

Content      = single_pulse_decouple
Data_format  = 1D_COMPLEX
Dim_size     = 26214
Dim_title    = 13C
Dim_units    = [ppm]
Dimensions   = X
Site         = ECX 400P
Spectrometer = DELTA2_MMR

Field_strength = 9.389766 [T] (400 [MHz])
X_acq_duration = 1.04333312 [s]
X_domain       = 13C
X_freq         = 100.52530333 [MHz]
X_offset       = 100 [ppm]
X_points       = 32768
X_prescans     = 4
X_resolution   = 0.95846665 [Hz]
X_sweep        = 31.40703918 [kHz]
Irr_domain     = 1H
Irr_freq       = 399.78219838 [MHz]
Irr_offset     = 5 [ppm]
Clipped       = FALSE
Mod_return     = 1
Scans          = 4096
Total_scans    = 4096

X_90_width     = 11.5 [us]
X_acq_time     = 1.04333312 [s]
X_angle        = 30 [deg]
X_atn          = 3.8 [dB]
X_pulse        = 3.83333333 [us]
Irr_atn_dec    = 20.58 [dB]
Irr_atn_noe    = 20.58 [dB]
Irr_noise      = WALTZ
Decoupling     = TRUE
Initial_wait   = 1 [s]
Noe            = TRUE
Noe_time       = 2 [s]
Recvr_gain     = 58
Relaxation_delay = 2 [s]
Repetition_time = 3.04333312 [s]
Temp_get       = 19 [dC]

```



19