

Figure 1. Structures of compounds 1–5 from of *Arenga pinnata* (Wurmb.) Merr. ruits.

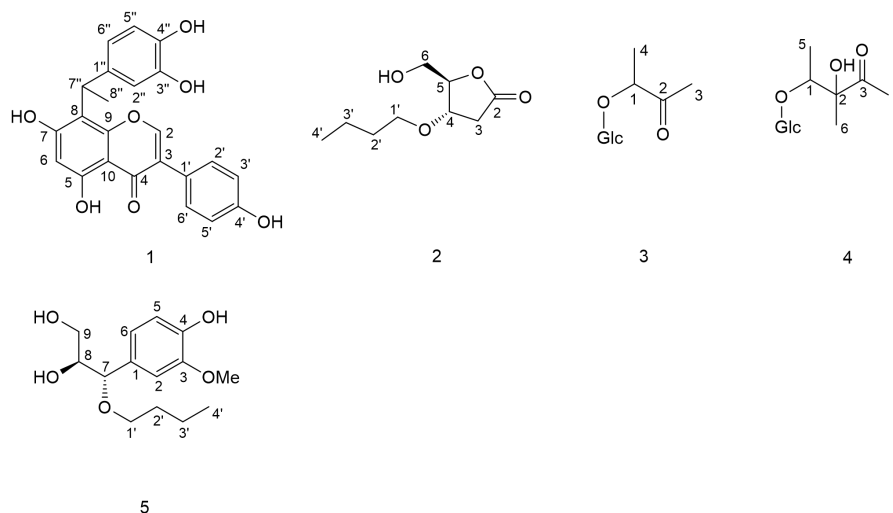


Table 1. ^1H - and ^{13}C -NMR Data of 1–5 (δ_{H} 400 MHz, δ_{C} 100 MHz in CD_3OD)

NO.	1		5	
	δ_{H} (J, Hz)	δ_{C}	δ_{H} (J, Hz)	δ_{C}
2	8.0 (s)	154.5	1	132.3
3		124.3	2	6.94 (s)
4		182.6	3	149.1
5		161.6	4	147.4
6	6.29 (s)	99.9	5	6.78 (m)
7		163.4	6	6.78 (m)
8		113.0	7	4.19 (d, 6.6)
9		157.2	8	3.66 (m)
10		106.5	9	3.47 (dd, 11.3, 3.8)
1'		123.4	1'	3.30 (m)
2',6'	7.34 (d, 8.6)	131.4	2'	3.35 (m)
3',5'	6.82 (d, 8.6)	116.3	3'	1.54 (m)
4'		158.8	4'	1.33 (m)
1''		138.3	4'	0.90 (t, 6.6)
2''	6.64 (s)	115.9	OCH ₃	3.84 (s)
3''		145.7		56.4
4''		144.0		
5''	6.76 (br. s)	115.7		
6''	6.65 (br. s)	119.5		
7''	4.70 (q, 7.2)	33.6		
8''	1.68 (d, 7.2)	18.4		

Figure 2. Key HMBC and ^1H - ^1H COSY correlations of Compounds 1–5.

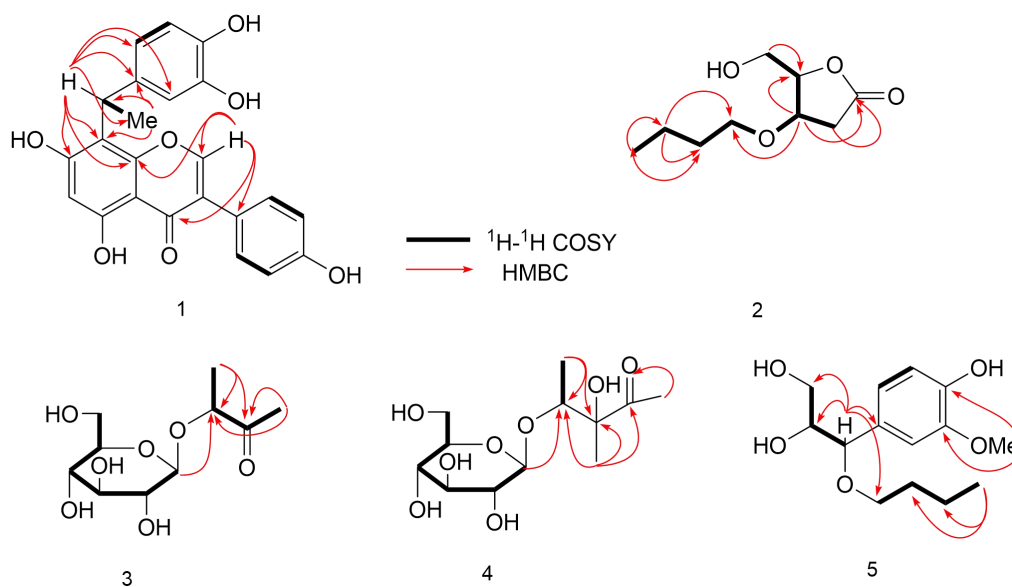


Table 2. ^1H - and ^{13}C -NMR Data of 2–4 (δ_{H} 400MHz, δ_{C} 100MHz in CD_3OD)

NO.	2		3		4	
	δ_{H} (J, Hz)	δ_{C}	δ_{H} (J, Hz)	δ_{C}	δ_{H} (J, Hz)	δ_{C}
1			4.18 (q, 6.8)	81.7	4.04 (q, 6.4)	79.1
2		178.0		213.2		82.3
3	2.58 (br. d, 17.6)	36.7	2.22 (3H, s)	25.8		215.1
4	2.78 (dd, 2.1, 17.6)					
4	4.26 (q-like, 4.7)	76.8	1.31 (d, 6.9)	17.0	2.25 (s)	26.7
5	4.56 (q-like, 4.6)	85.9			1.13 (d, 6.4)	21.8
6	3.86 (dd, 12.3, 2.9)	61.1			1.29 (s)	14.4
6	3.84 (br. d, 12.3)					
1'	3.51 (m)	70.6	4.33 (d, 8.5)	103.7	4.31 (d, 7.7)	101.7
1'	3.37 (m)					
2'	1.65 (m)	32.9	3.25 (m)	75.0	3.16 (dd, 7.7, 9.0)	74.9
3'	1.35 (m)	20.4	3.27 (m)	78.1	3.35 (m)	77.9
4'	0.93 (t, 7.5)	14.2	3.27 (m)	71.5	3.29 (m)	71.7
5'			3.34 (m)	78.0	3.27 (m)	78.0
6'			3.82 (dd, 2.1, 2.3)	62.7	3.87 (dd, 1.2, 11.7)	62.8
6'			3.62 (dd, 5.6, 5.4)		3.65 (m)	

Figure 1. $^1\text{H-NMR}$ correlation profile of Compound 1.

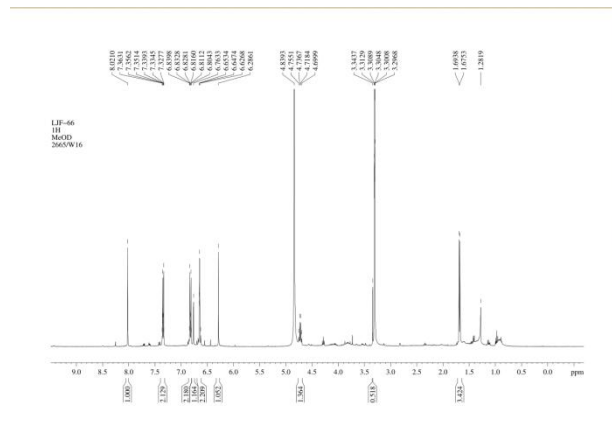


Figure 2. $^{13}\text{C-NMR}$ correlation profile of Compound 1.

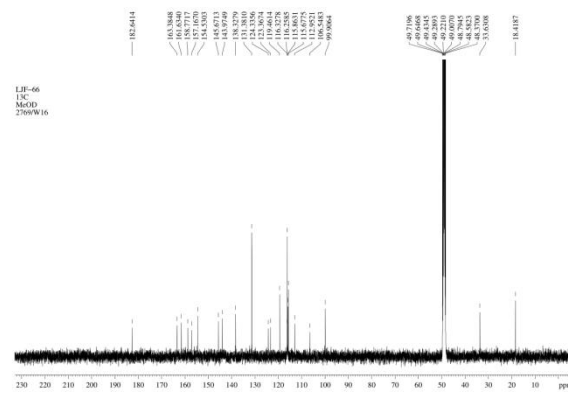


Figure 3. HSQC correlation profile of Compound 1.

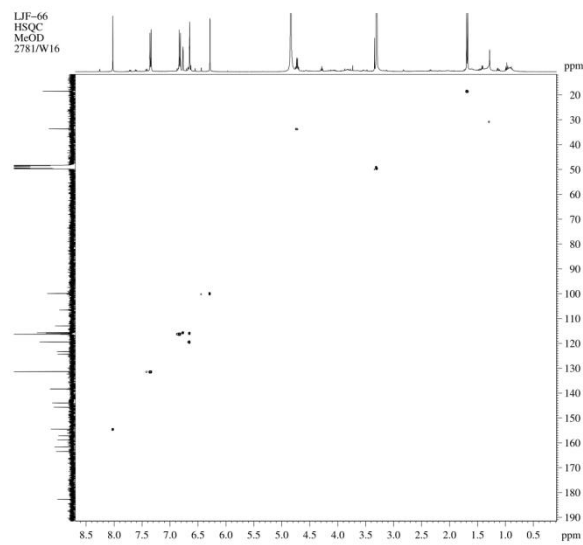


Figure 4. ^1H - ^1H COSY correlation profile of Compound 1.

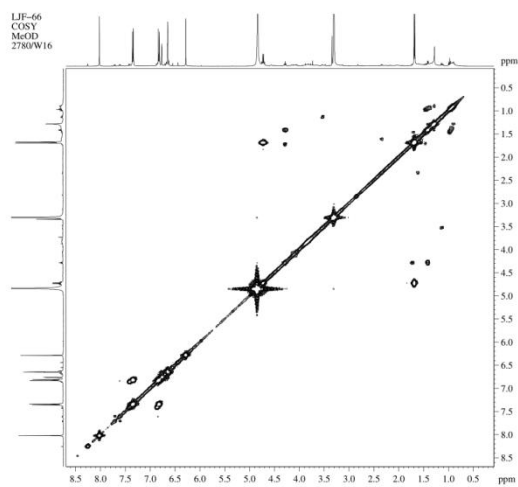


Figure 5. HMBC correlation profile of Compound 1.

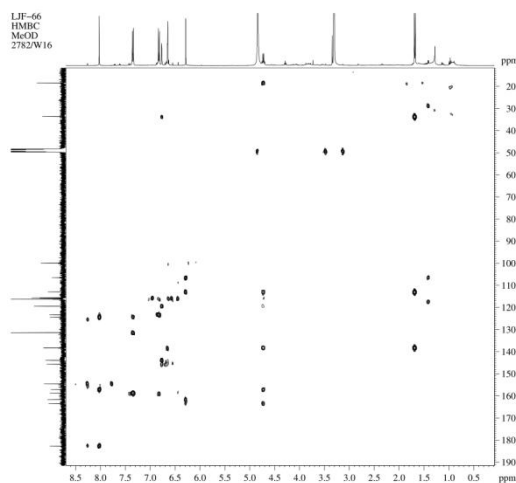


Figure 6. DEPT-135 correlation profile of Compound 1.

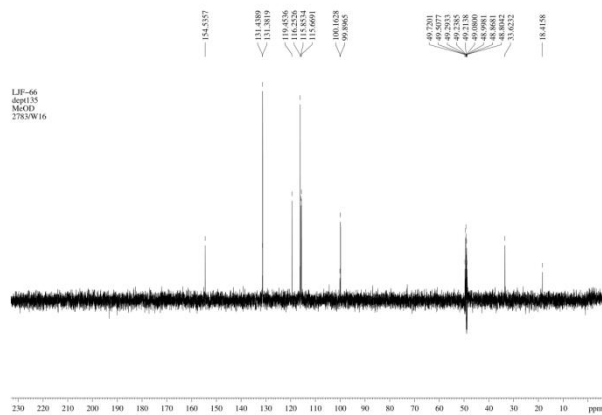


Figure 16. ^1H - ^1H COSY correlation profile of Compound 2.

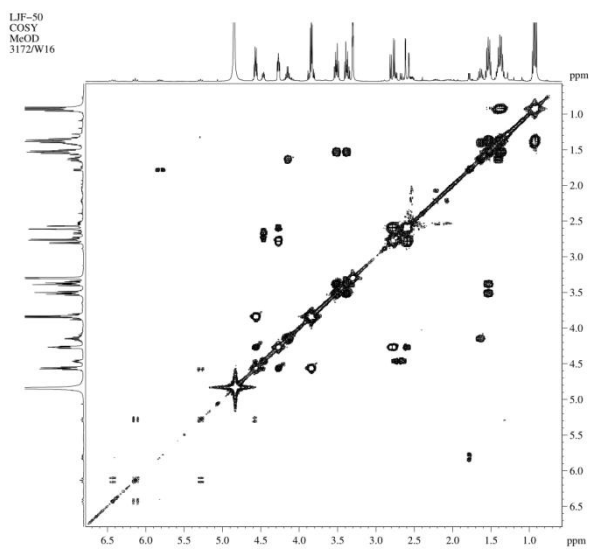


Figure 17. HMBC correlation profile of Compound 2

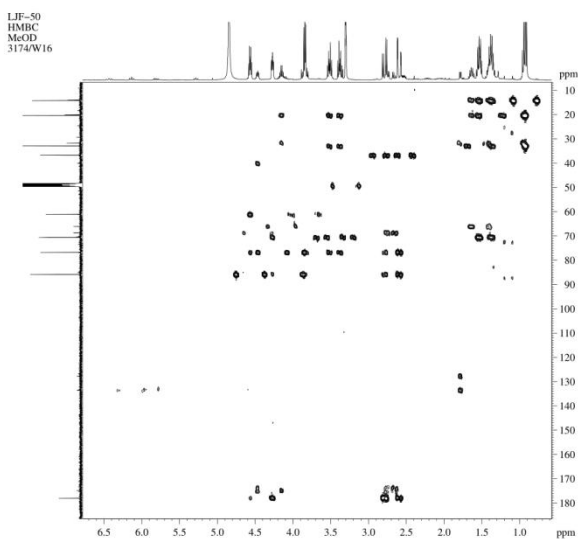


Figure 18. DEPT-135 correlation profile of Compound 2.

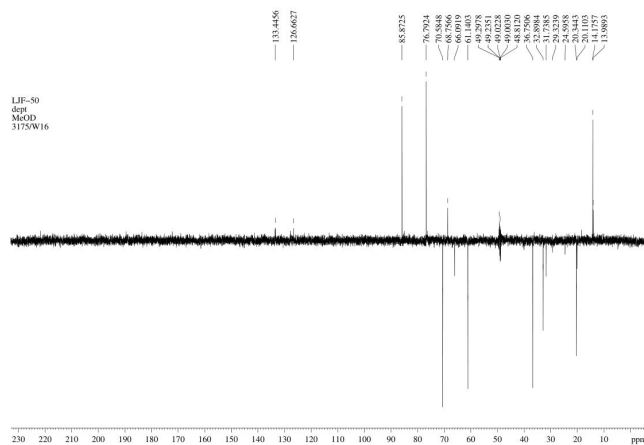


Figure 22. ^1H - ^1H COSY correlation profile of Compound 3.

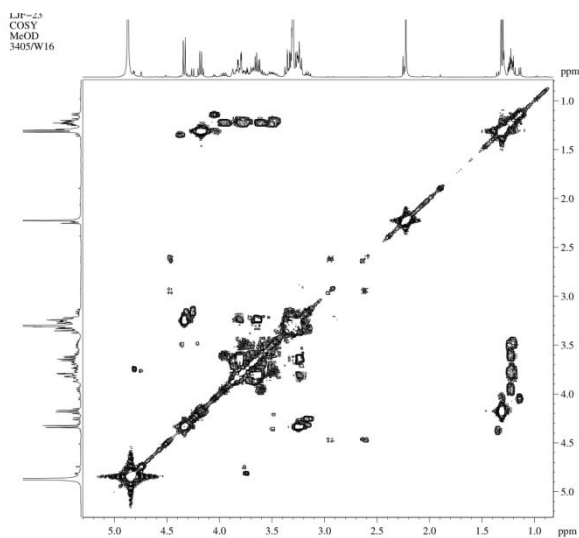


Figure 23. HMBC correlation profile of Compound 3

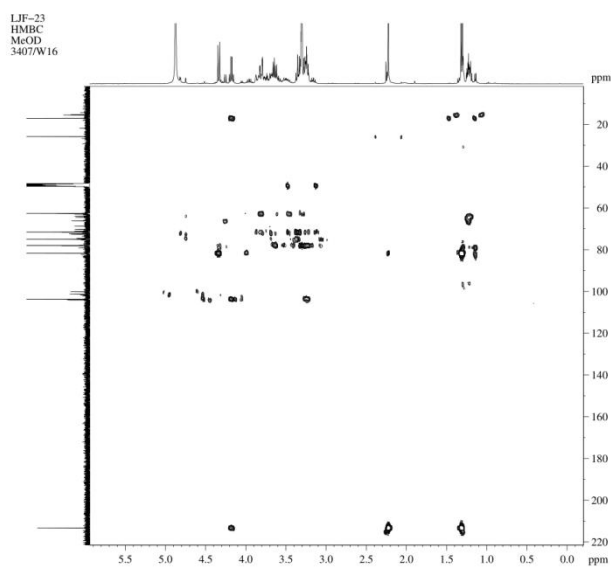


Figure 24. DEPT-135 correlation profile of Compound 3.

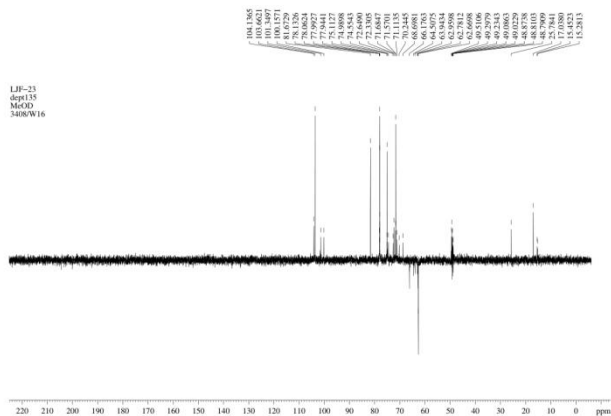


Figure 25. ^1H -NMR correlation profile of Compound 4.

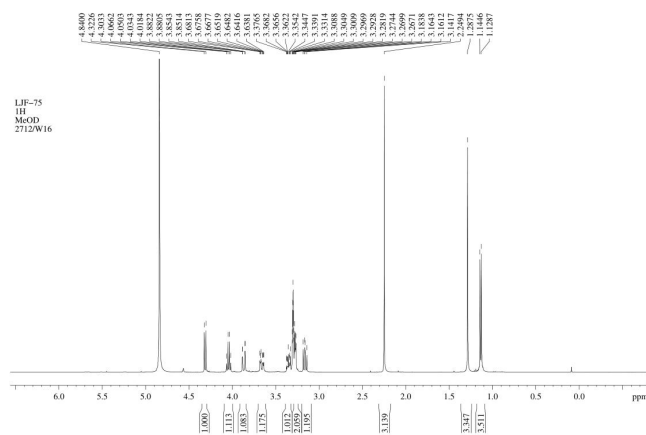


Figure 26. ^{13}C -NMR correlation profile of Compound 4.

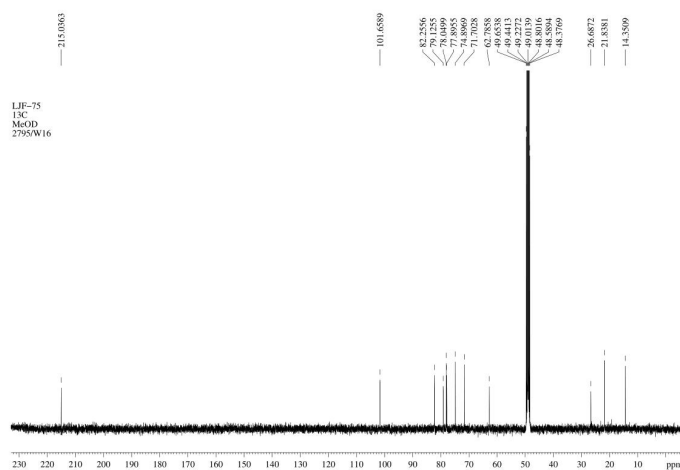


Figure 27. HSQC correlation profile of Compound 4.

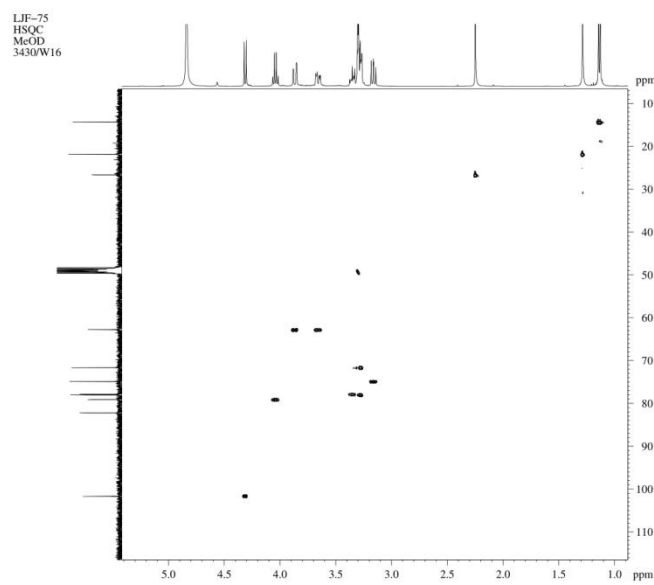


Figure 28. ^1H - ^1H COSY correlation profile of Compound 4.

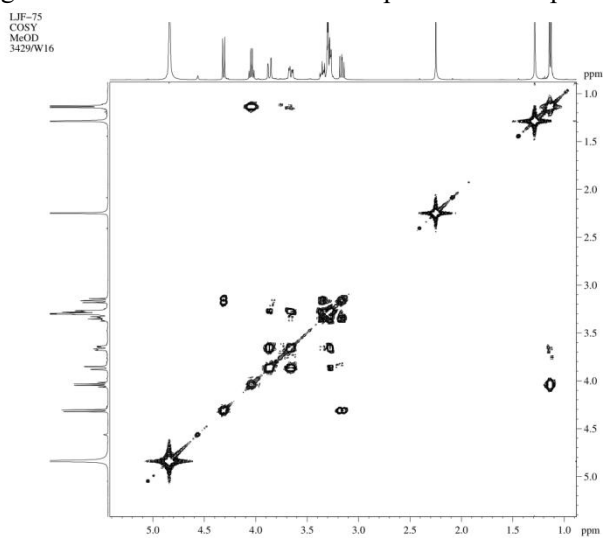


Figure 29. HMBC correlation profile of Compound 4

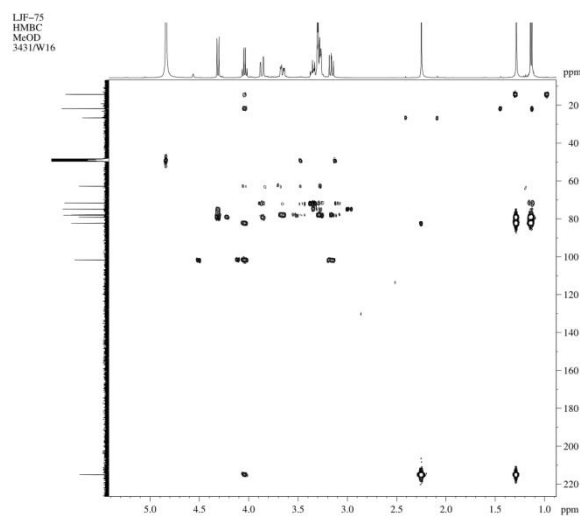


Figure 30. DEPT-135 correlation profile of Compound 4.

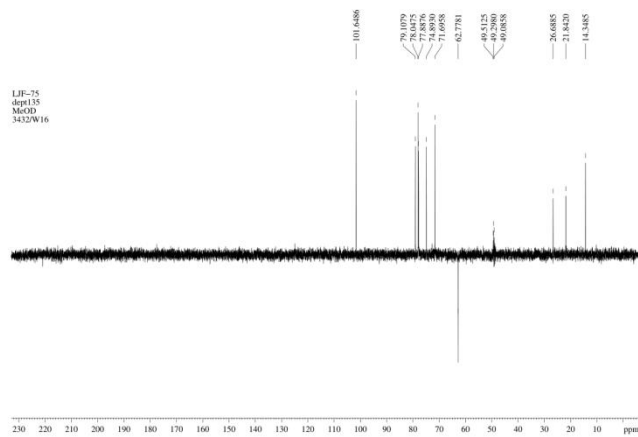


Figure 7. ¹H-NMR correlation profile of Compound 5.

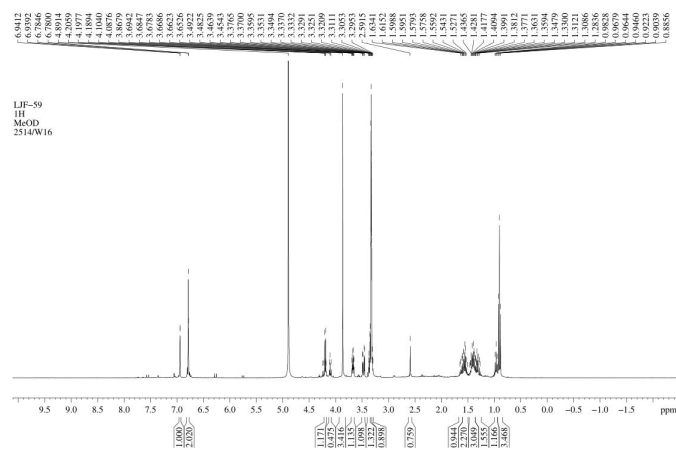


Figure 8. ¹³C-NMR correlation profile of Compound 5.

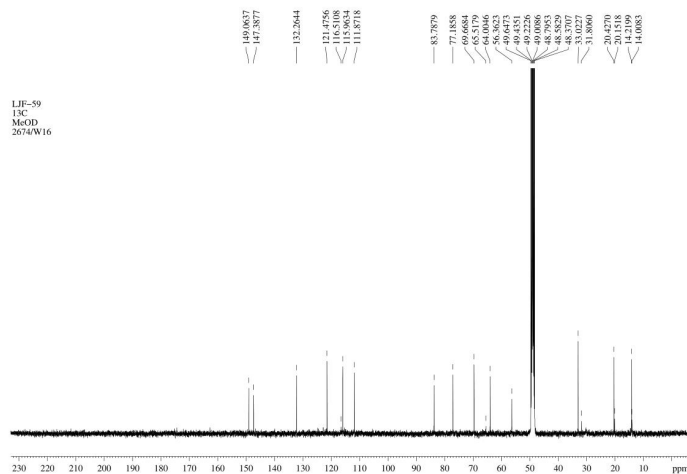


Figure 9. HSQC correlation profile of Compound 5.

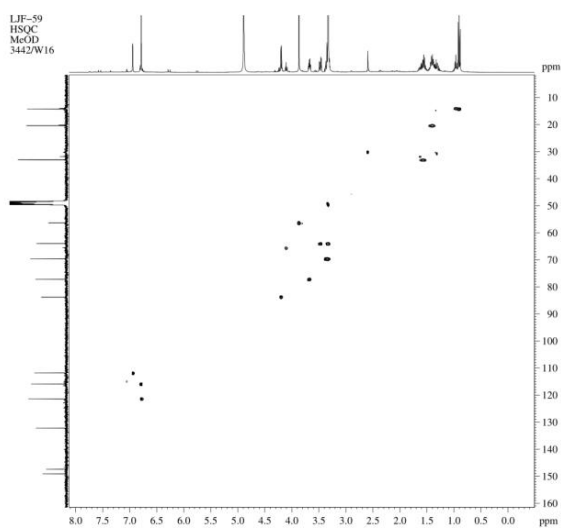


Figure 10. ^1H - ^1H COSY correlation profile of Compound 5.

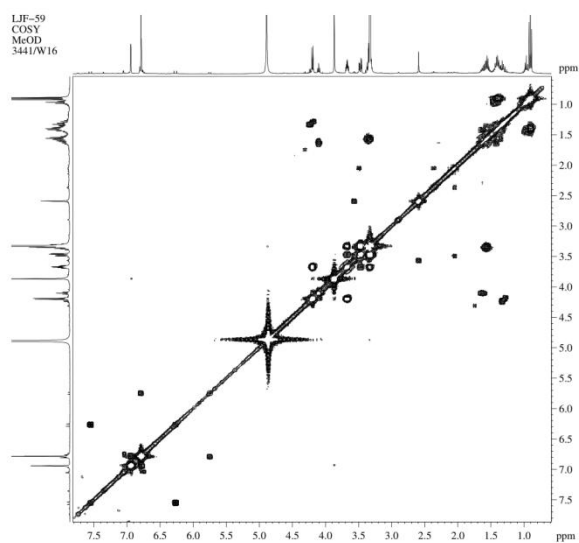


Figure 11. HMBC correlation profile of Compound 5.

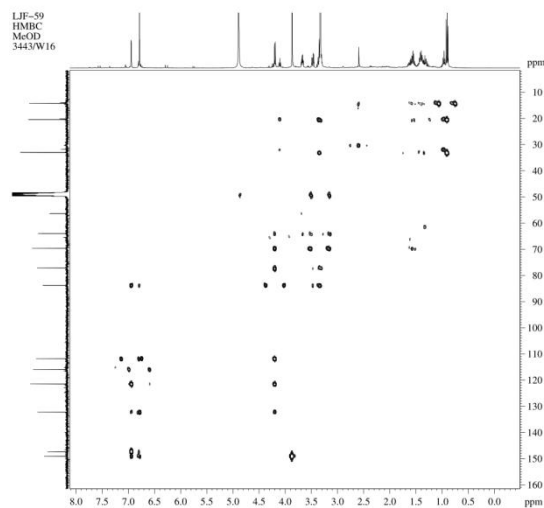


Figure 12. DEPT-135 correlation profile of Compound 5.

