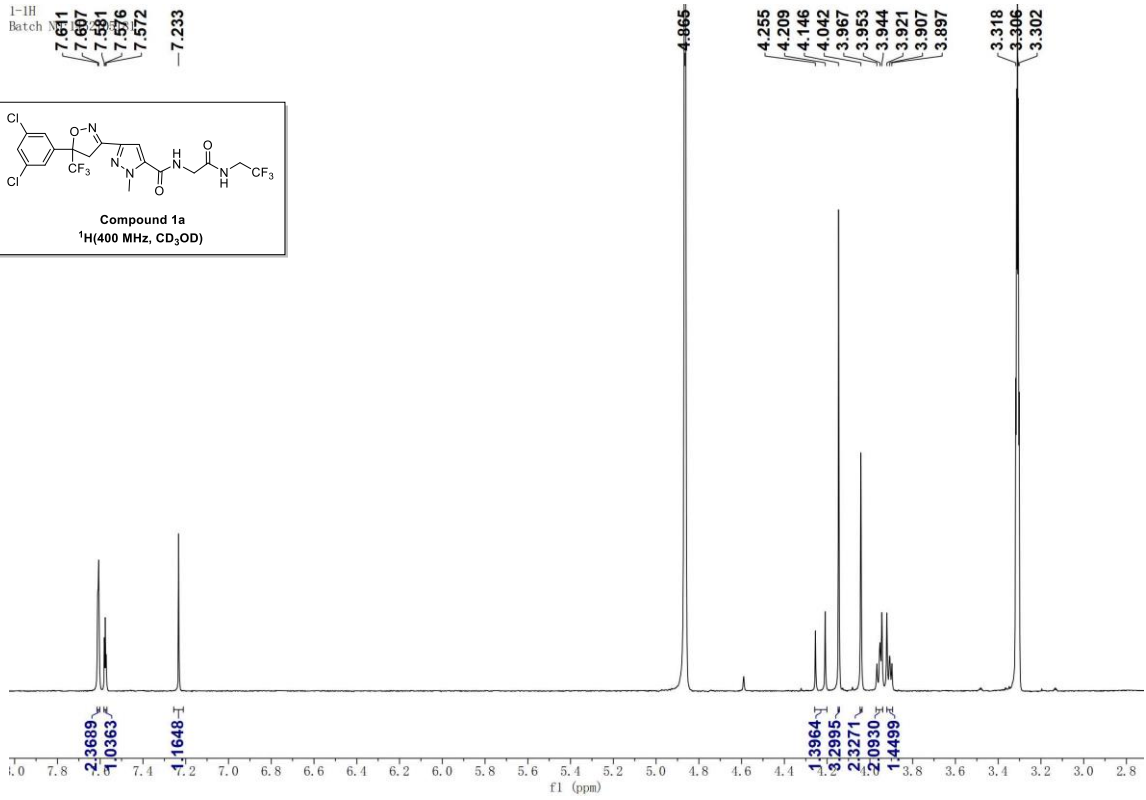
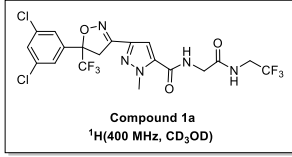
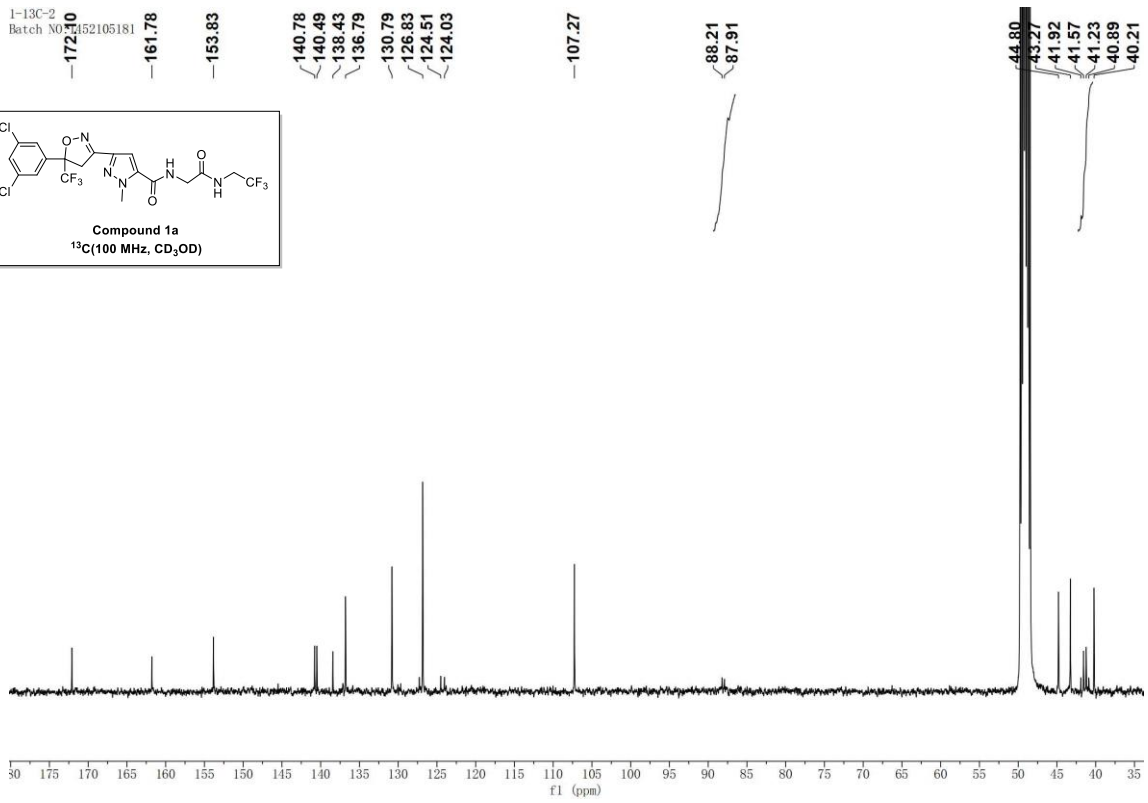
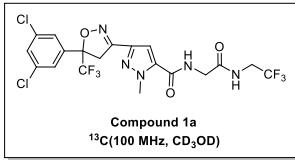


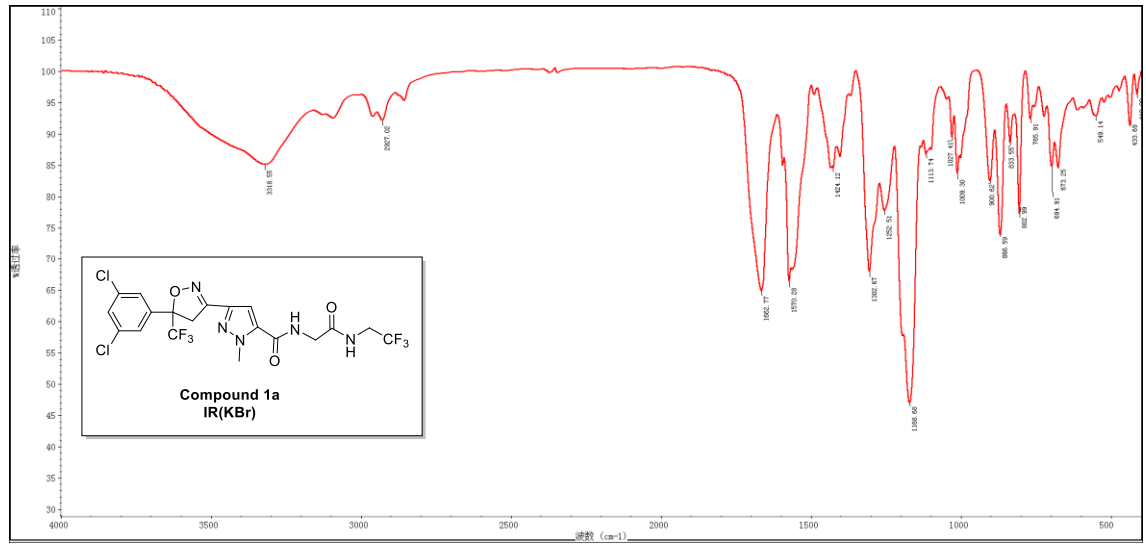
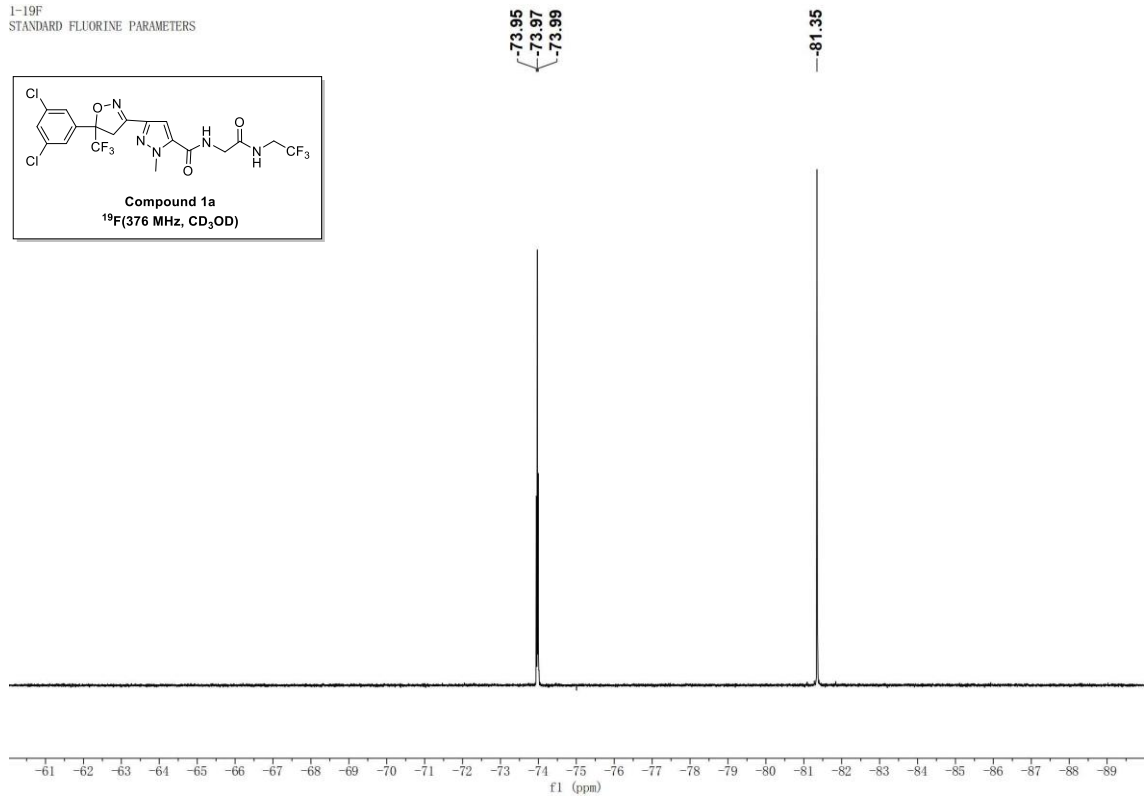
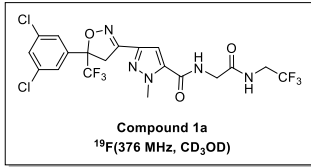
1-1H
Batch
7.641
7.607
7.581
7.576
7.572
-7.233

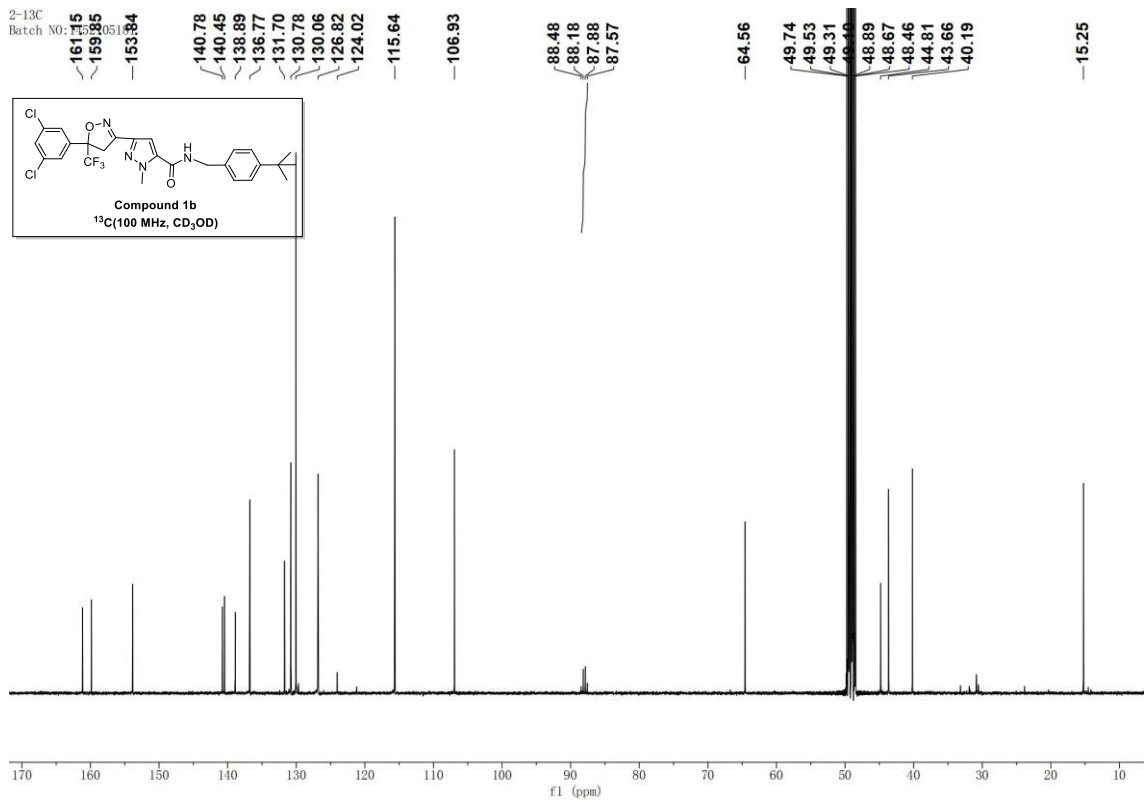
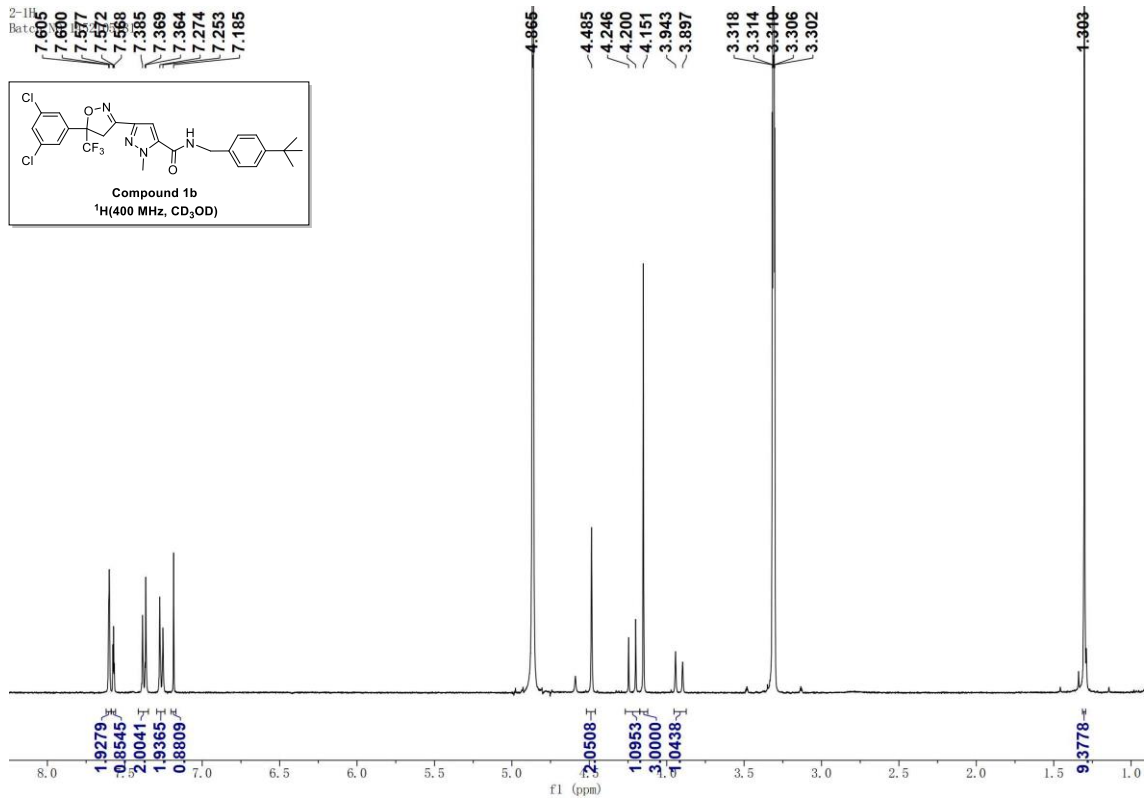


1-13C-2
Batch NO 152105181
-172.10
-161.78
-153.83



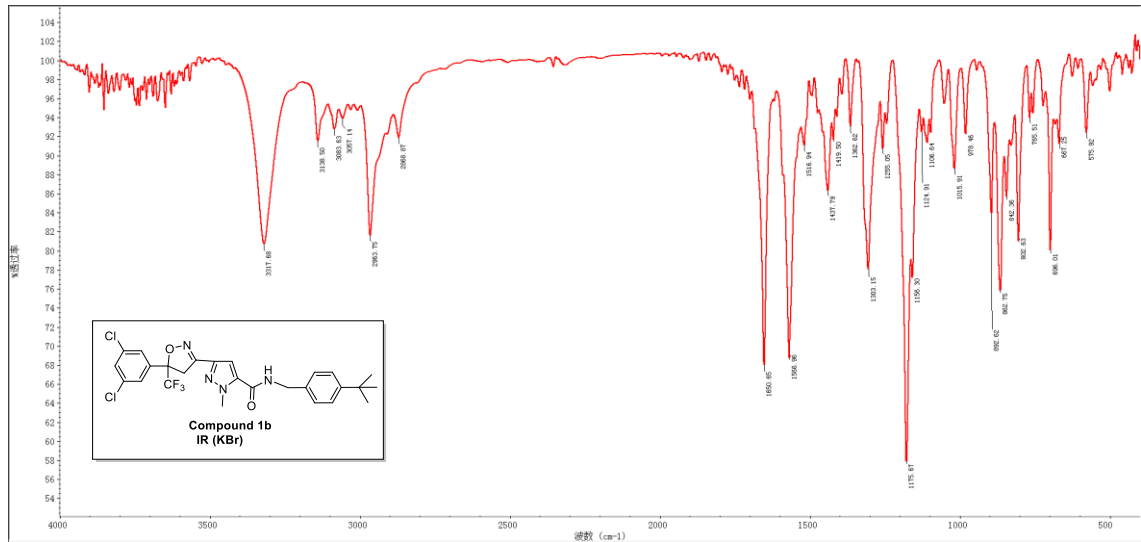
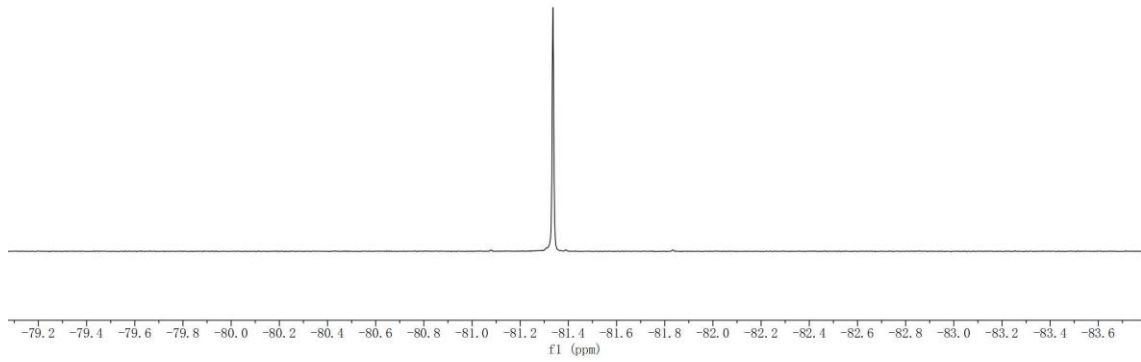
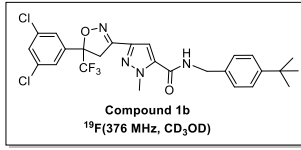
I-19F
STANDARD FLUORINE PARAMETERS





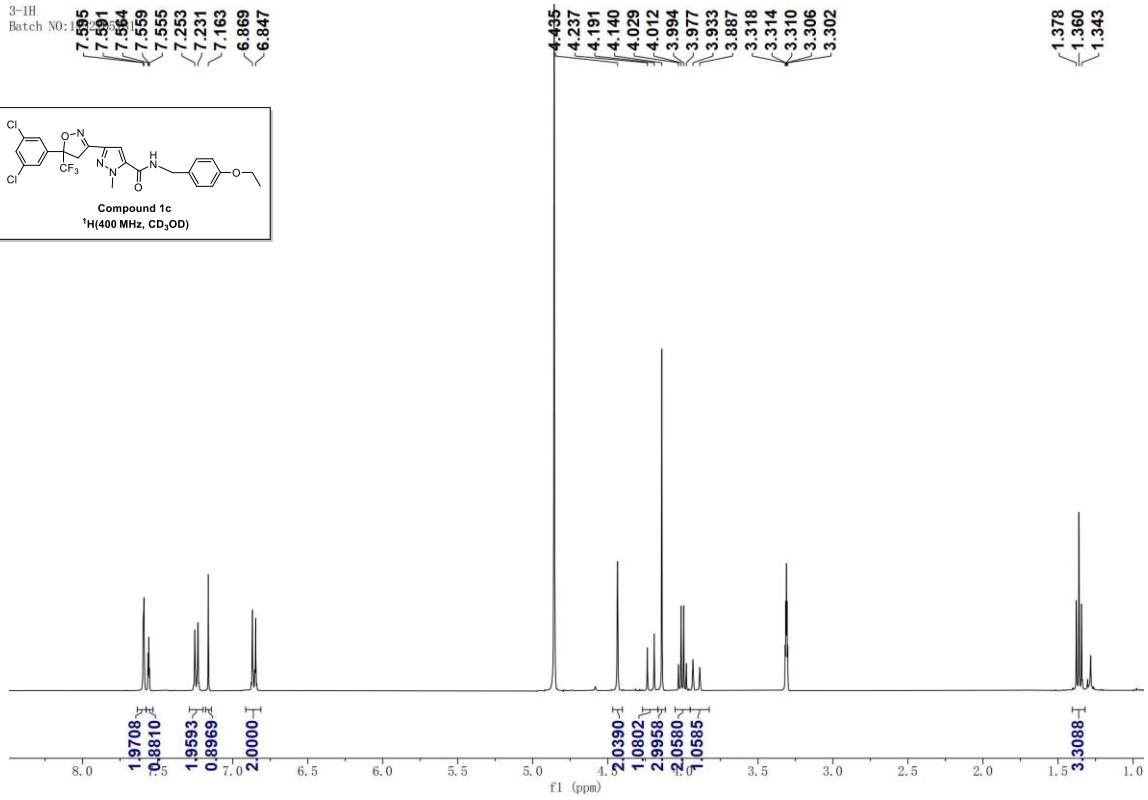
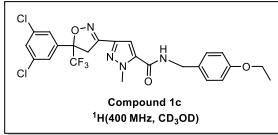
2-19F
STANDARD FLUORINE PARAMETERS

-81.34



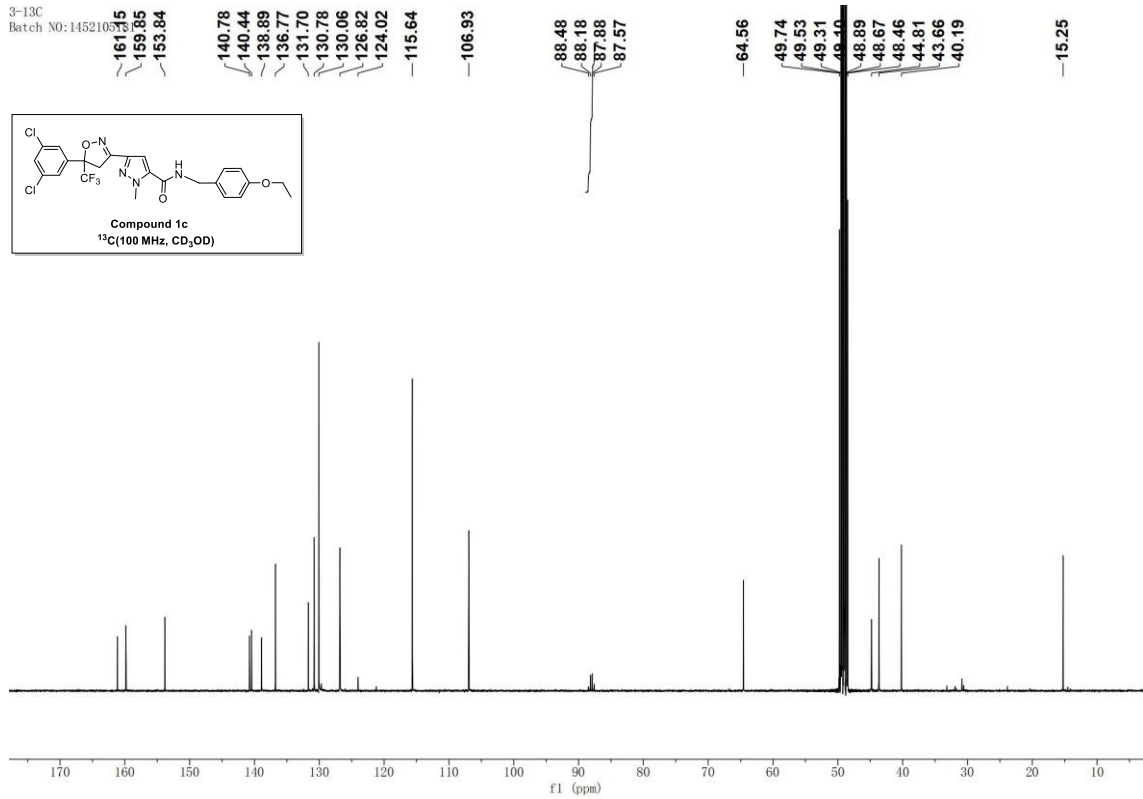
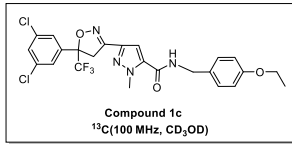
3-1H
Batch NO:

7.595
7.591
7.584
7.559
7.555
7.253
7.231
7.163
6.869
6.847

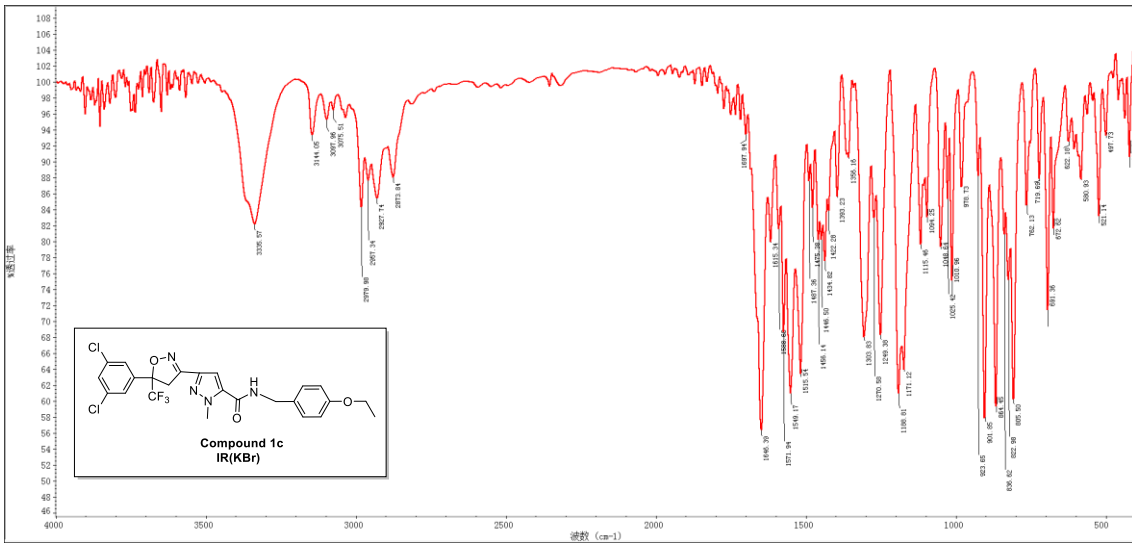
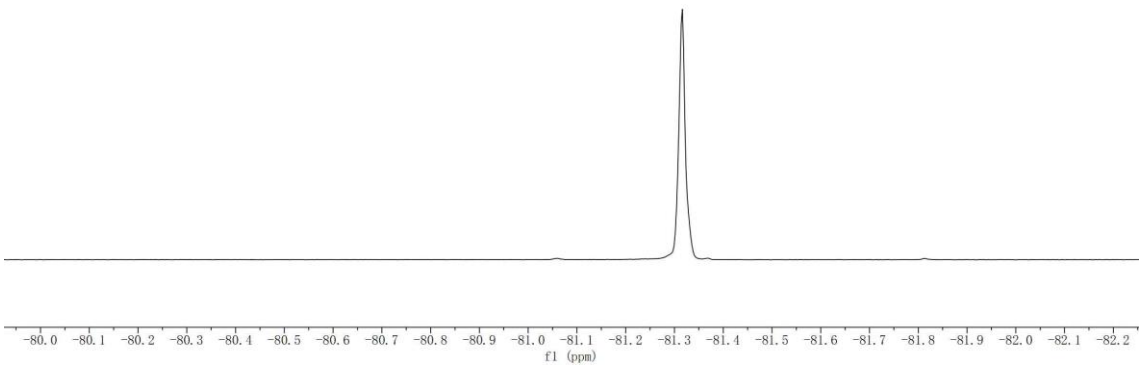
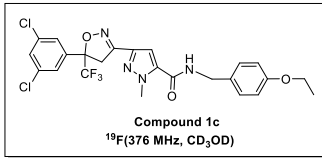


3-13C
Batch NO:145210533

161.15
159.85
153.84
140.78
140.44
138.89
136.77
131.70
130.78
130.06
126.82
124.02
115.64
106.93

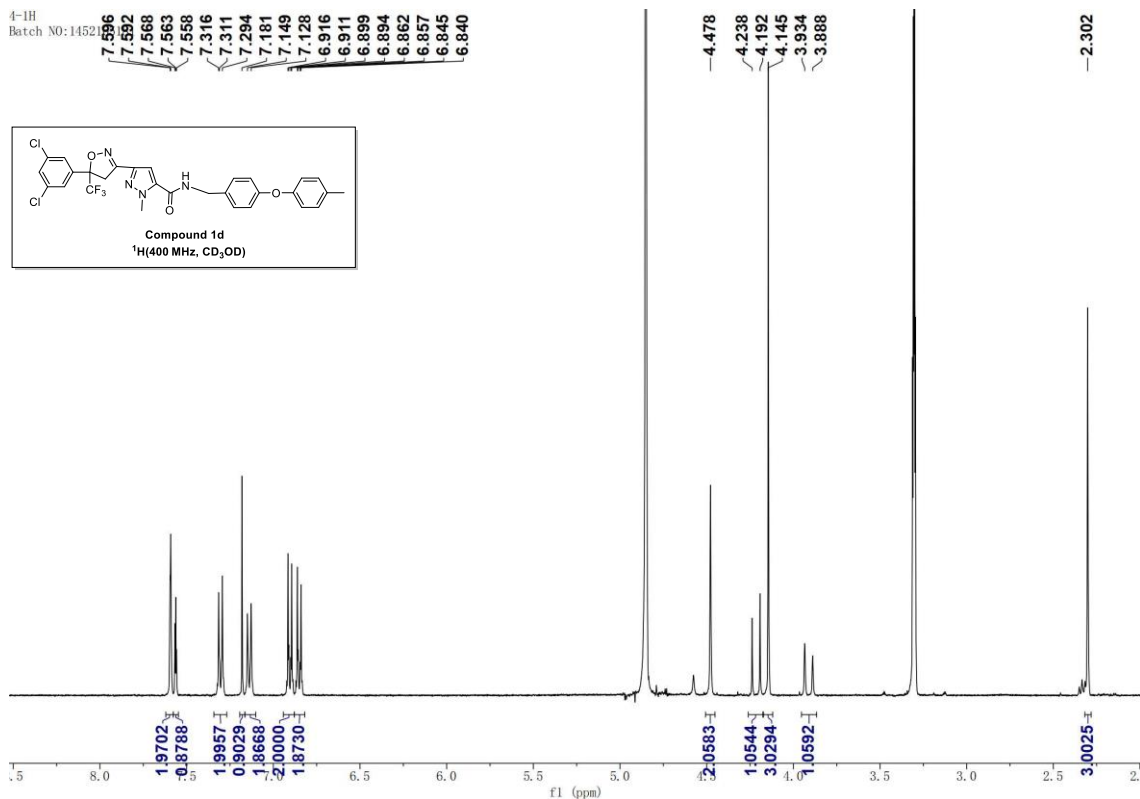
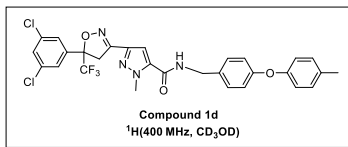


-81.32



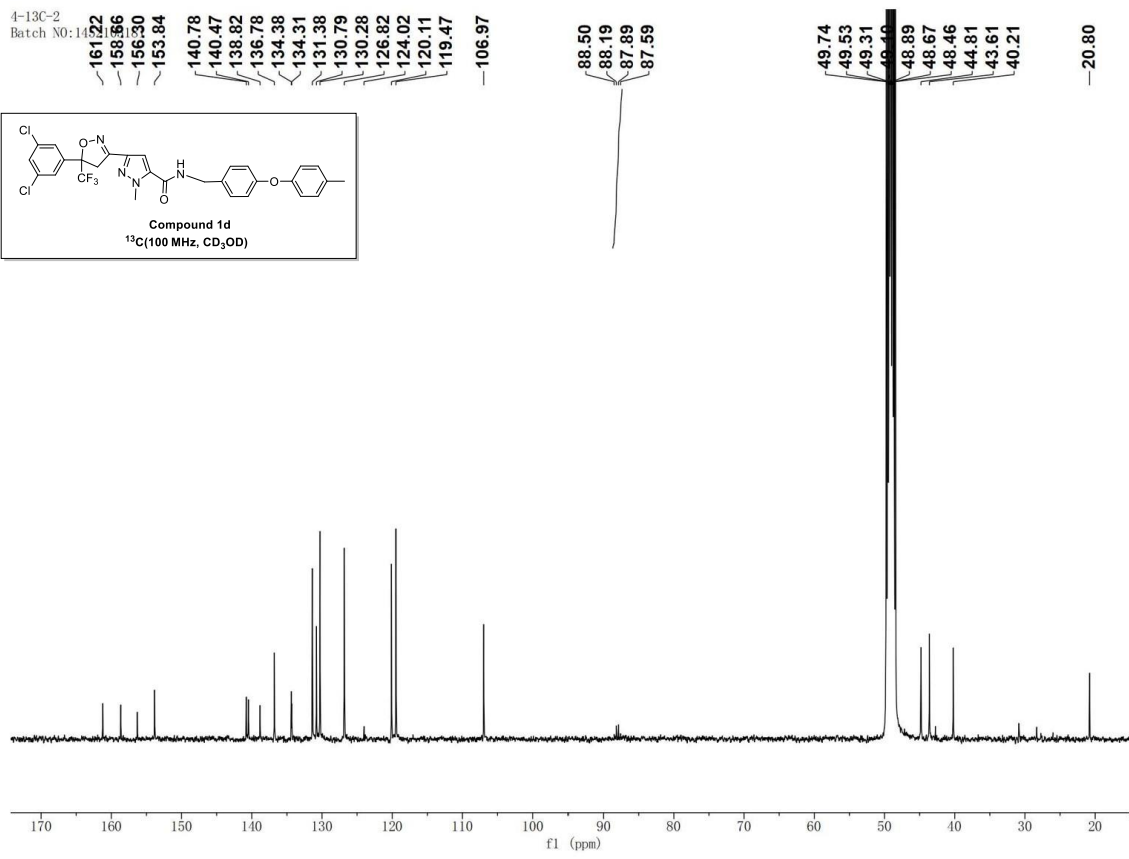
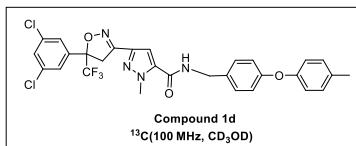
4-1H
Batch NO:14521

- 7.596
- 7.592
- 7.568
- 7.563
- 7.558
- 7.316
- 7.311
- 7.294
- 7.181
- 7.149
- 7.128
- 6.916
- 6.911
- 6.899
- 6.894
- 6.862
- 6.857
- 6.845
- 6.840



4-13C-2
Batch NO:14521

- 161.22
- 158.66
- 156.30
- 153.84
- 140.78
- 140.47
- 138.82
- 136.78
- 134.38
- 134.31
- 131.38
- 130.79
- 130.28
- 126.82
- 124.02
- 120.11
- 119.47
- 106.97



4-19F
STANDARD FLUORINE PARAMETERS

