

Supplementary Information

A NEW COMPOUND EMBELOSIDE A WITH HYPOGLYCEMIC POTENTIAL FROM THE FRUITS OF *EMBELIA OBLONGIFOLIA* HEMSL.

Ying Xu^{1,3}, Yuqi Sun^{1,2}, Bing Liu², Ning Chen², Yingjie Liu^{1,2}, Dongxue Wang^{1,2}, Lei Yu^{1,2*}, Haifeng Wang^{1,3*}

¹School of Pharmacy, Harbin University of Commerce, Harbin, 150076, China.

²Engineering Research Center of Natural Anticancer Drugs, Ministry of Education, Harbin, 150076, China.

³School of Traditional Chinese Materia Medica, Shenyang Pharmaceutical University, Shenyang, 110016, China. E-mail: xuying030709@163.com, yulei912@163.com.

Contents of supplemental material

Figure S1. The ^1H -NMR spectrum of compound **1**.

Figure S2. The ^{13}C -NMR spectrum of compound **1**.

Figure S3. The HSQC spectrum of compound **1**.

Figure S4. The HMBC spectrum of compound **1**.

Figure S5. The HR-ESI-TOFMS spectrum of compound **1**.

Figure S6. Glucose configuration of the standard substance and compound **1**.

Figure S7. The separation procedure of the EtOAc extract of the *Embelia oblongifolia* Hemsl.

Figure S8. The separation procedure of the CH_2Cl_2 extract of the *Embelia oblongifolia* Hemsl.

Spectral data of compound 1

Figure S1 : The $^1\text{H-NMR}$ spectrum of compound 1

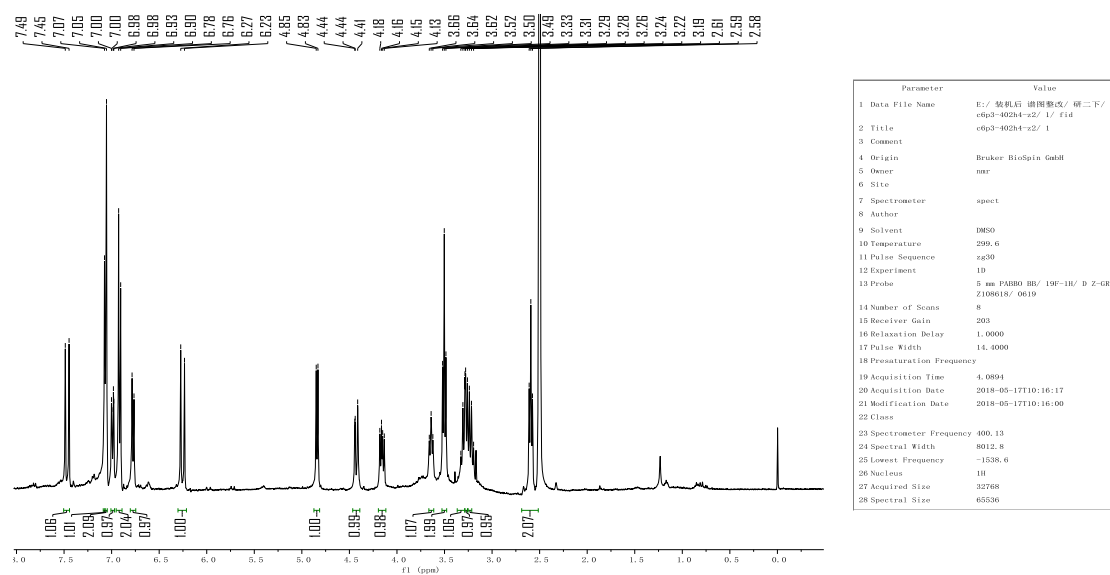


Figure S2 : The $^{13}\text{C-NMR}$ spectrum of compound 1

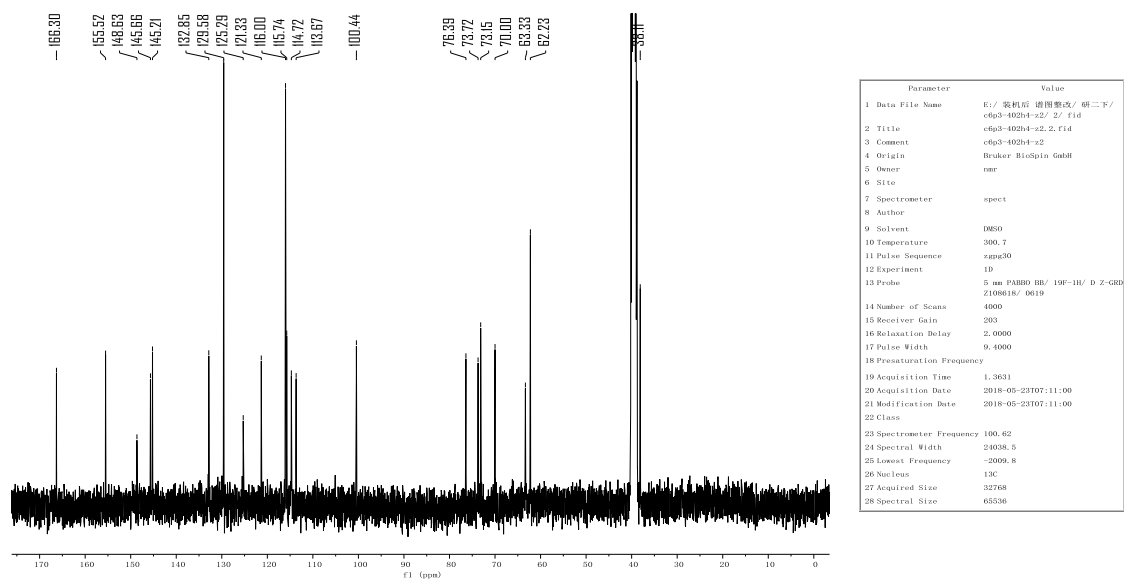


Figure S3 : The HSQC spectrum of compound 1

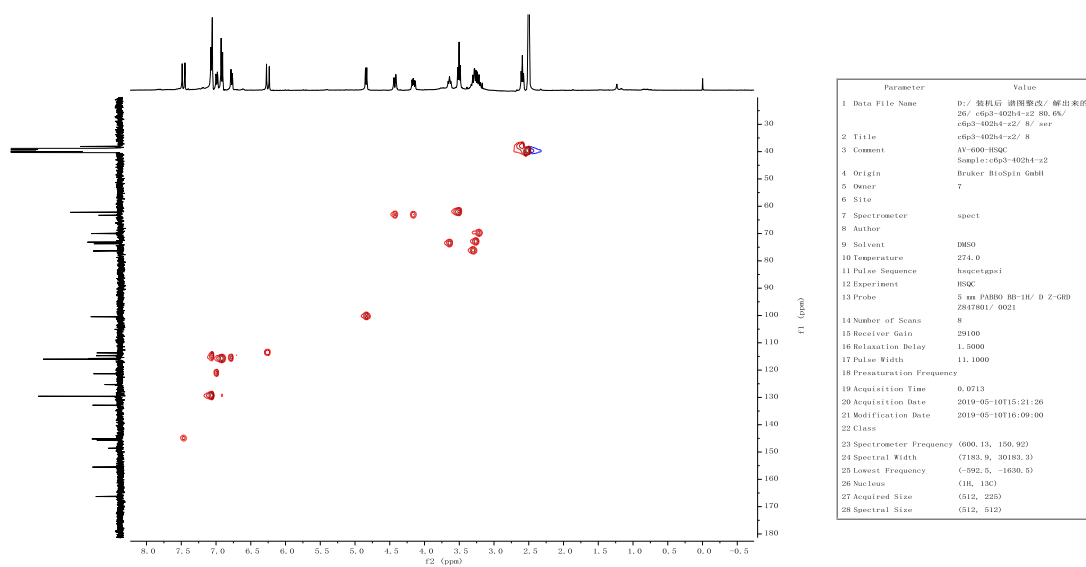


Figure S4 : The HMBC spectrum of compound 1

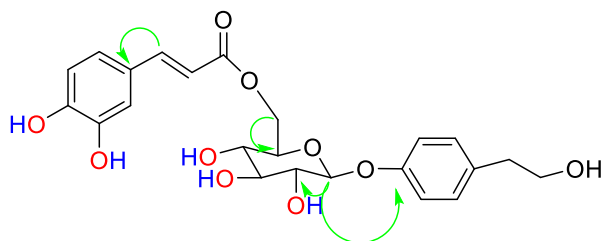
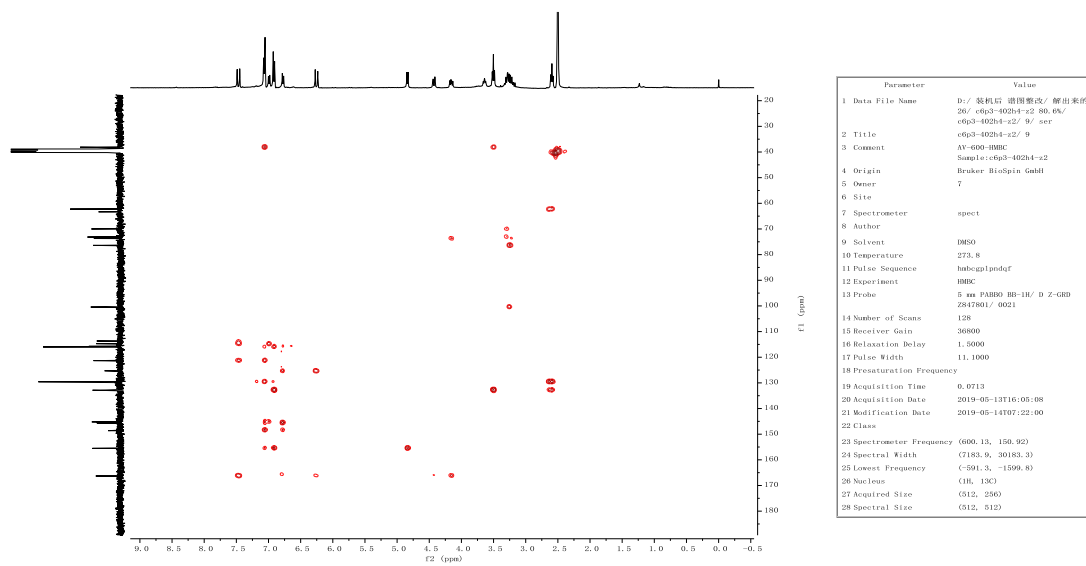


Figure S5 : The HR-ESI-TOFMS spectrum of compound 1

Data Filename	C6P3-402H4-Z2-NEG.d	Sample Name	Sample4
Sample Type	Sample	Position	P1-A4
Instrument Name	Instrument 1	User Name	
Acq Method	default-20170301-neg.m	Acquired Time	5/17/2019 2:34:11 PM
IRM Calibration Status	Success	DA Method	default_Analysis.m
Comment			
Sample Group	Info.		

User Spectra

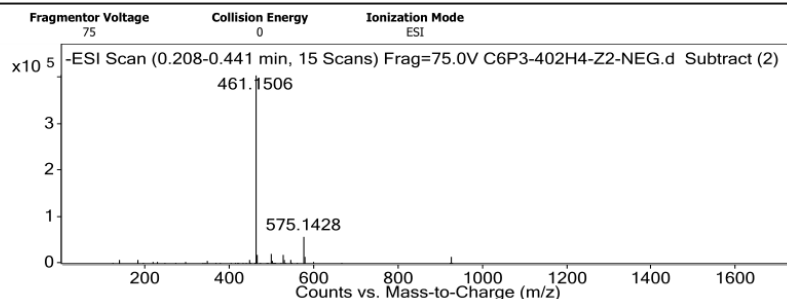
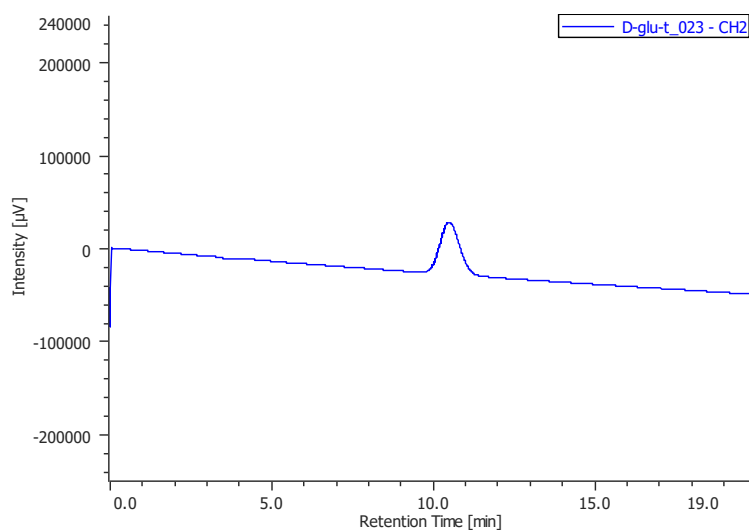
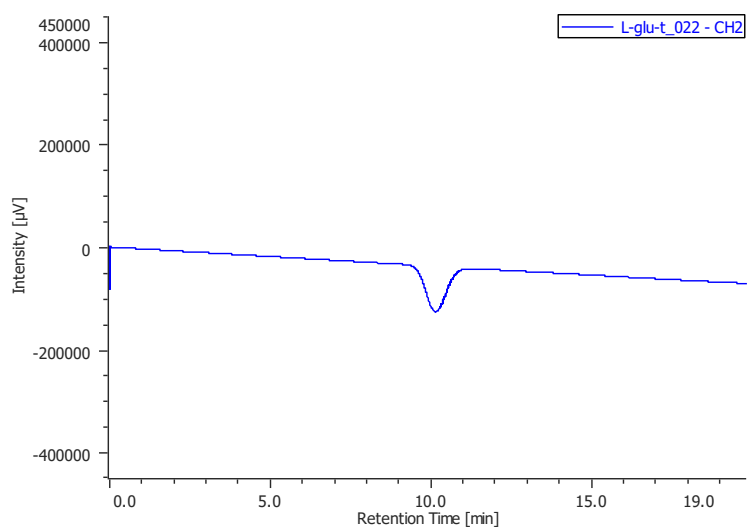


Figure S6 : Glucose configuration of the standard substance and compound 1



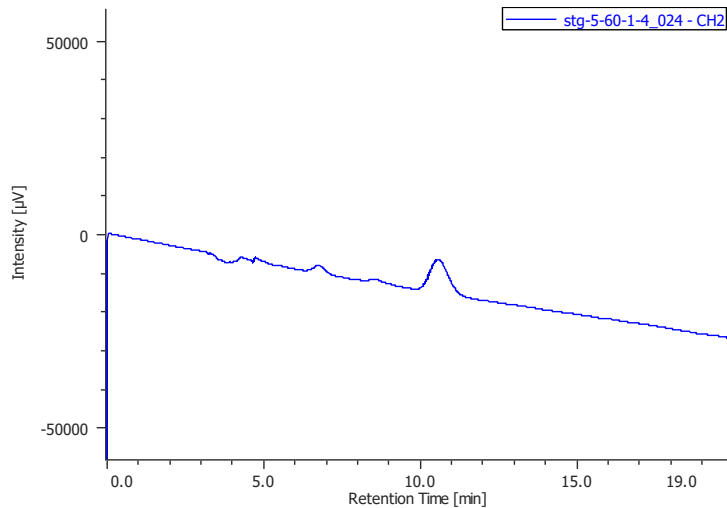


Figure S7 : The separation procedure of the EtOAc extract of the *Embelia oblongifolia* Hemsl

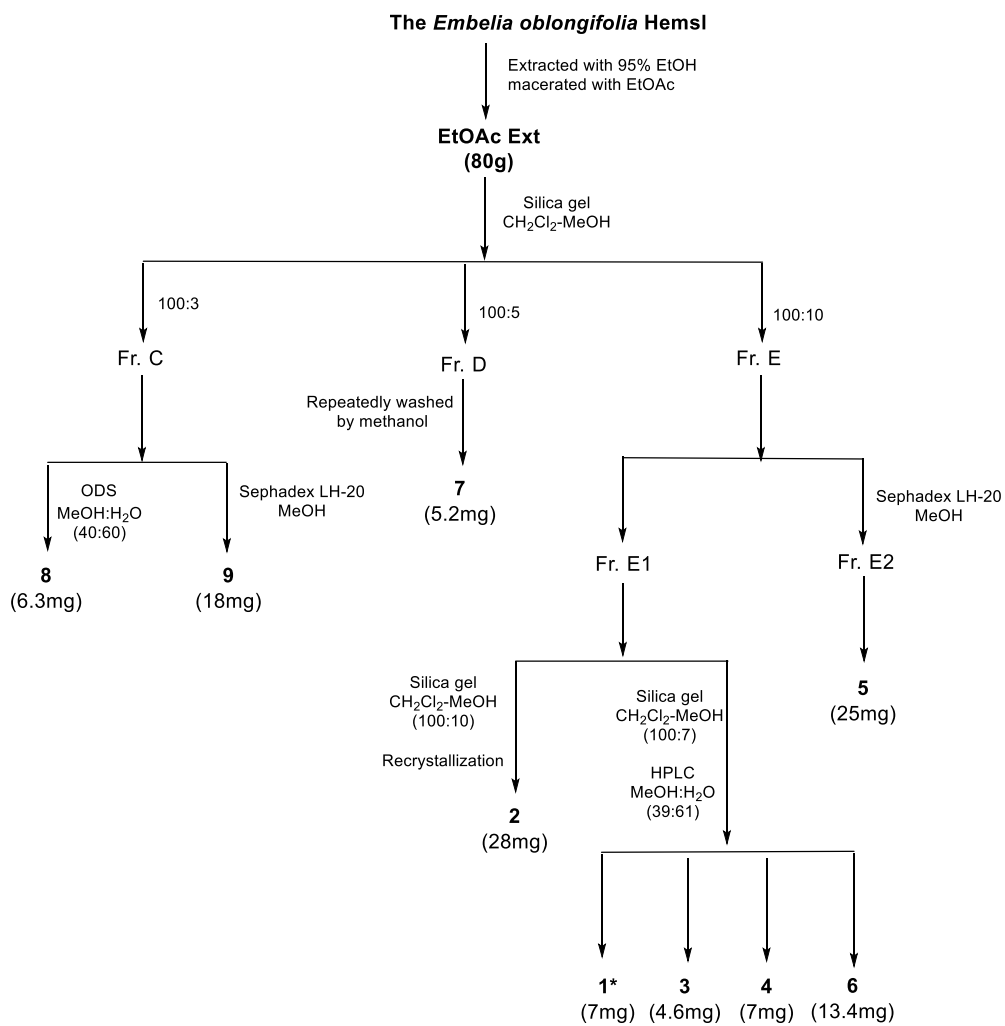


Figure S8 : The separation procedure of the CH₂Cl₂ extract of the *Embelia oblongifolia* Hemsl

